



23

2/17/86
~~6/18/87~~
PLC-123

April 18, 1996

New Mexico Land Department
P.O. Box 1148
Santa Fe, New Mexico 87504

COPY

Attn: Mr. Larry Kehoe
Director, Oil/Gas and Minerals Division

RE: OFF-LEASE STORAGE AND SURFACE COMMINGLING PERMIT APPLICATION
Remuda Basin 19 Fee Lease
Remuda Basin State Lease
Remuda Basin 19 Federal Lease
Common Tank Battery located in
Unit Letter F, Section 19, T-23-S, R-30-E
Eddy County, New Mexico

Gentlemen:

Texaco Exploration and Production Inc. requests administrative approval for off-lease storage and surface commingling of production on the above leases. Attached is a similar request package on these leases to the United States Bureau of Land Management.

Three different royalty interest leases will produce into this common tank battery: one fee, one state, and one federal. There is presently one active Remuda Basin 19 Fee well and four active Remuda Basin State wells. Two Remuda Basin 19 Federal wells are in the process of being drilled.

Each royalty interest will produce into a three phase separator. The hydrocarbon streams (oil, gas) will be metered before they are commingled. The meters will be turbine meters with non-resettable counters and proving loops will be installed so that each meter can be proven as required.

A test separator will be installed to conduct monthly well tests. The State and Federal royalty interest wells will utilize the same test separator. Valves will be mechanically linked such that outgoing streams from the test vessel must return to the appropriate production vessel for metering prior to commingling.

There will be just one well producing into the Fee separator. This well will not be routed to the test separator.

Pressure will be regulated on the production separators by a single back pressure valve to ensure that all three vessels are operating at the same pressure. It will be necessary to install a back pressure valve on the test separator. The test separator will have to operate at a higher pressure than the production vessels in order to be able to dump back into them.

Fluids from the production separators will be combined in a FWKO for final treatment and separation of the two fluid phases. Fluids will be dumped to the appropriate tanks. A circulating pump will be installed to move water or bad oil from the tanks. The circulating pump will pump into the FWKO.

Total production at the battery will be allocated back to each royalty interest lease based on the production separator meters. Monthly production will then be allocated back to each well based on well tests and the amount of oil allocated back to each royalty interest lease.

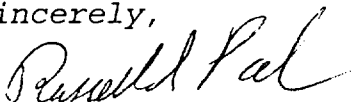
All of the wells involved in this application are operated by Texaco Exploration and Production Inc. All of the Remuda Basin State wells have common schools as their state beneficiary. All mineral interest holders on the Remuda Basin 19 Fee lease have been notified of this proposal by copy application sent by certified mail.

At the battery, the oil will be transported by Texaco Trading & Transportation. The gas will be sold to Highlands Gathering & Processing. Water from the battery will be hauled to disposal wells. The facility installation will be in compliance with the "Manual for the Installation and Operation of Commingling Facilities", which is published by the NMOCD. Items attached for review are: N.M. State Land Dpt Commingle Pre-Application Acreage dedication plats for each well.

BLM surface commingling and off-lease storage request package.
Plat showing well locations, lease boundaries, and battery.
Copies of certified mail receipts to mineral interest holders.
Schematics of proposed common tank battery and separator detail.

A check for \$30.00 for the filing fee is enclosed. If you have any questions concerning this request, please contact Monte Duncan at 397-0418. Thank you for your consideration of this proposal.

Sincerely,



Russell Pool, Hobbs Operating Unit Senior Engineer
MCD/s Chrono, Attachments

cc: New Mexico Oil Conservation Division, Santa Fe
New Mexico Oil Conservation Division, District II Office
U. S. Bureau of Land Management; All Mineral Interest Holders

COMMINGLE PRE-APPLICATION

STATE LAND OFFICE RULES 1.053-1.055 APPLY TO COMMINGLING OIL AND GAS PRODUCTION FROM NEW MEXICO STATE LANDS. PLEASE PROVIDE THE FOLLOWING INFORMATION SO THAT WE CAN DETERMINE WHETHER OR NOT A COMMINGLE APPLICATION PACKAGE SHOULD BE SUBMITTED.

1. BRIEFLY DESCRIBE WHAT YOU PROPOSE TO DO.

PLEASE SEE ATTACHED LETTER

2. FILL IN THE FOLLOWING INFORMATION FOR EACH WELL.

State wells going into tank battery

WELL NUMBER	LEGAL DESCRIPTION	LESSEE OF RECORD	N.M. LEASE NUMBER	FORMATION
Remuda Basin State #1	F-19-23S-30E	TEPI	B-1306	Nash Draw-Brushy Canyon
Remuda Basin State #2	K-19-23S-30E	TEPI	B-1306	Nash Draw-Brushy Canyon
Remuda Basin State #3	K-30-23S-30E	TEPI	B-1306	Forty Niner Ridge Delaware
Remuda Basin State #4	N-19-23S-30E	TEPI	B-1306	Nash Draw-Brushy Canyon

NAME: Monte C. Duncan, Engineer's Assistant

COMPANY: Texaco Exploration and Production Inc., 205 E. Bender, Hobbs, NM

PHONE NUMBER: (505) 397-0418 or (505) 393-7191

IF YOU HAVE ANY QUESTIONS, PLEASE CONTACT THE OIL, GAS AND MINERALS DIVISION AT (505) 827-5744.

KKCS 06-04-91

COMMINGLE PRE-APPLICATION

STATE LAND OFFICE RULES 1.053-1.055 APPLY TO COMMINGLING OIL AND GAS PRODUCTION FROM NEW MEXICO STATE LANDS. PLEASE PROVIDE THE FOLLOWING INFORMATION SO THAT WE CAN DETERMINE WHETHER OR NOT A COMMINGLE APPLICATION PACKAGE SHOULD BE SUBMITTED.

1. BRIEFLY DESCRIBE WHAT YOU PROPOSE TO DO.

PLEASE SEE ATTACHED LETTER

2. FILL IN THE FOLLOWING INFORMATION FOR EACH WELL.

Federal and Fee wells going into tank battery

WELL NUMBER	LEGAL DESCRIPTION	LESSEE OF RECORD	N.M. LEASE NUMBER	FORMATION
Remuda Basin 19 Federal #1	A-19-23S-30E	TEPI	NM-17056	Nash Draw-Brushy Canyon
Remuda Basin 19 Federal #2	B-19-23S-30E	TEPI	NM-17056	Nash Draw Brushy-Canyon
Remuda Basin 19 Fee #1	C-19-23S-30E	TEPI		Nash Draw Brushy-Canyon

NAME: Monte C. Duncan, Engineer's Assistant

COMPANY: Texaco Exploration and Production Inc., 205 E. Bender, Hobbs, NM

PHONE NUMBER: (505) 397-0418 or (505) 393-7191

IF YOU HAVE ANY QUESTIONS, PLEASE CONTACT THE OIL, GAS AND MINERALS DIVISION AT (505) 827-5744.

KKCS 06-04-91

DISTRICT I
P. O. Box 1980, Hobbs, NM 88240

DISTRICT II
P. O. Drawer DD, Artesia, NM 88210

DISTRICT III
1000 Rio Brazos Rd., Aztec, NM 87410

DISTRICT IV
P. O. Box 2088, Santa Fe, NM 87504-2088

State of New Mexico
Energy, Minerals and Natural Resources Department

OIL CONSERVATION DIVISION
PO Box 2088
Santa Fe, NM 87504-2088

Form C-102
Revised February 10, 1994

Instructions on back

Submit to Appropriate District Office

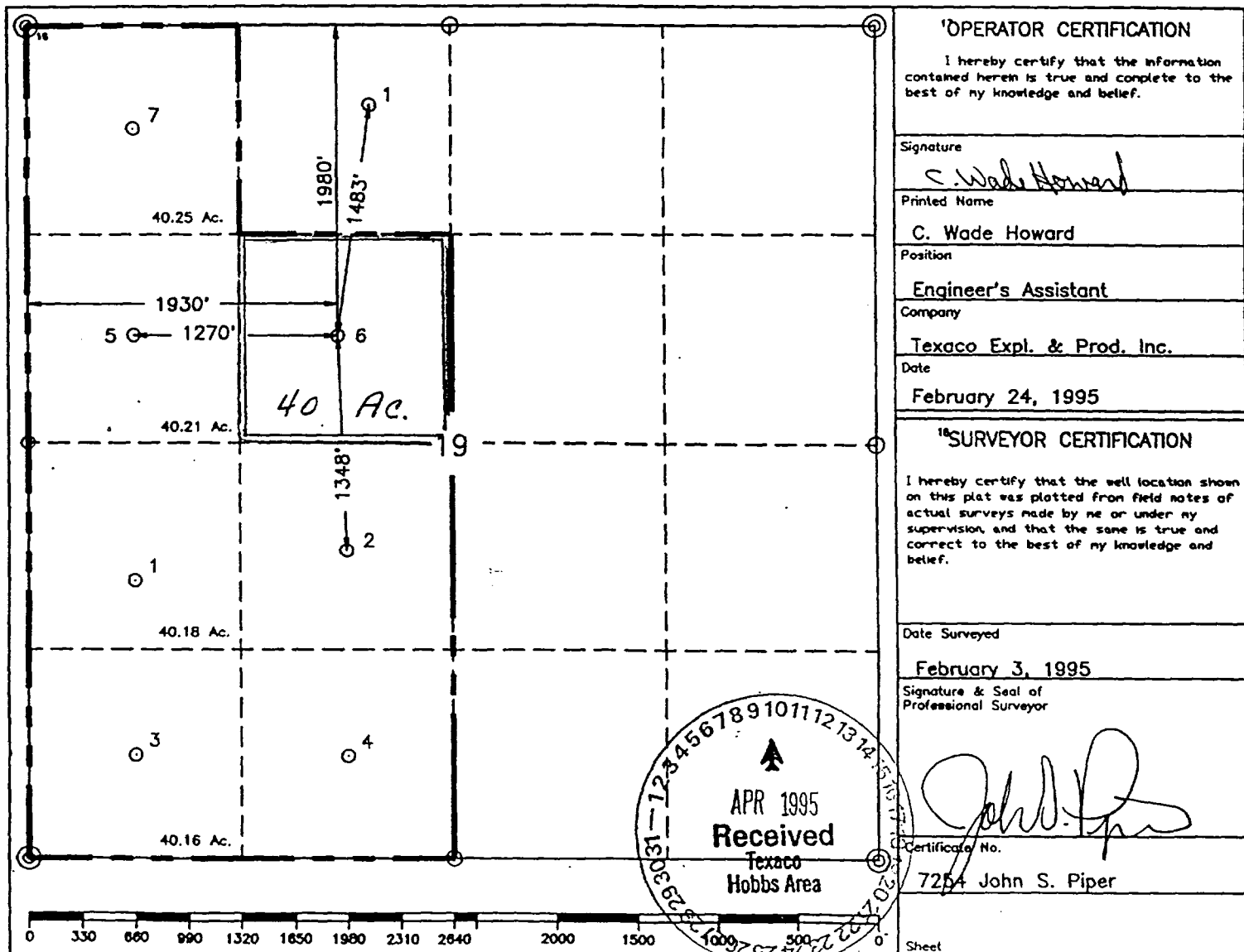
State Lease-4 copies
Fee Lease-3 copies

☐ AMENDED REPORT

WELL LOCATION AND ACREAGE DEDICATION PLAT

¹ API Number 30-015-28422		² Pool Code 47545		³ Pool Name NASH DRAW-BRUSHY CANYON					
⁴ Property Code 17551		⁵ Property Name Remuda Basin State			⁶ Well Number 1				
⁷ OGRID No. 22351		⁸ Operator Name TEXACO EXPLORATION & PRODUCTION, INC.			⁹ Elevation 3052				
¹⁰ Surface Location									
UL or lot no. F	Section 19	Township 23-S	Range 30-E	Lot Idn	Feet from the 1980'	North/South line North	Feet from the 1930'	East/West line West	County Eddy
¹¹ Bottom Hole Location If Different From Surface									
UL or lot no.	Section	Township	Range	Lot Idn	Feet from the	North/South line	Feet from the	East/West line	County
¹² Dedicated Acres 40		¹³ Joint or Infill		¹⁴ Consolidation Code		¹⁵ Order No.			

NO ALLOWABLE WILL BE ASSIGNED TO THIS COMPLETION UNTIL ALL INTERESTS HAVE BEEN CONSOLIDATED
OR A NON-STANDARD UNIT HAS BEEN APPROVED BY THE DIVISION.



○ = Staked Location ● = Producing Well ▲ = Injection Well

DISTRICT I
P. O. Box 1980, Hobbs, NM 88240

DISTRICT II
P. O. Drawer DD, Artesia, NM 88210

DISTRICT III
1000 Rio Brazos Rd., Aztec, NM 87410

DISTRICT IV
P. O. Box 2088, Santa Fe, NM 87504-2088

State of New Mexico
Energy, Minerals and Natural Resources Department

OIL CONSERVATION DIVISION
PO Box 2088
Santa Fe, NM 87504-2088

Form C-102
Revised February 10, 1994

Instructions on back

Submit to Appropriate District Office

State Lease-4 copies
Fee Lease-3 copies

☐ AMENDED REPORT

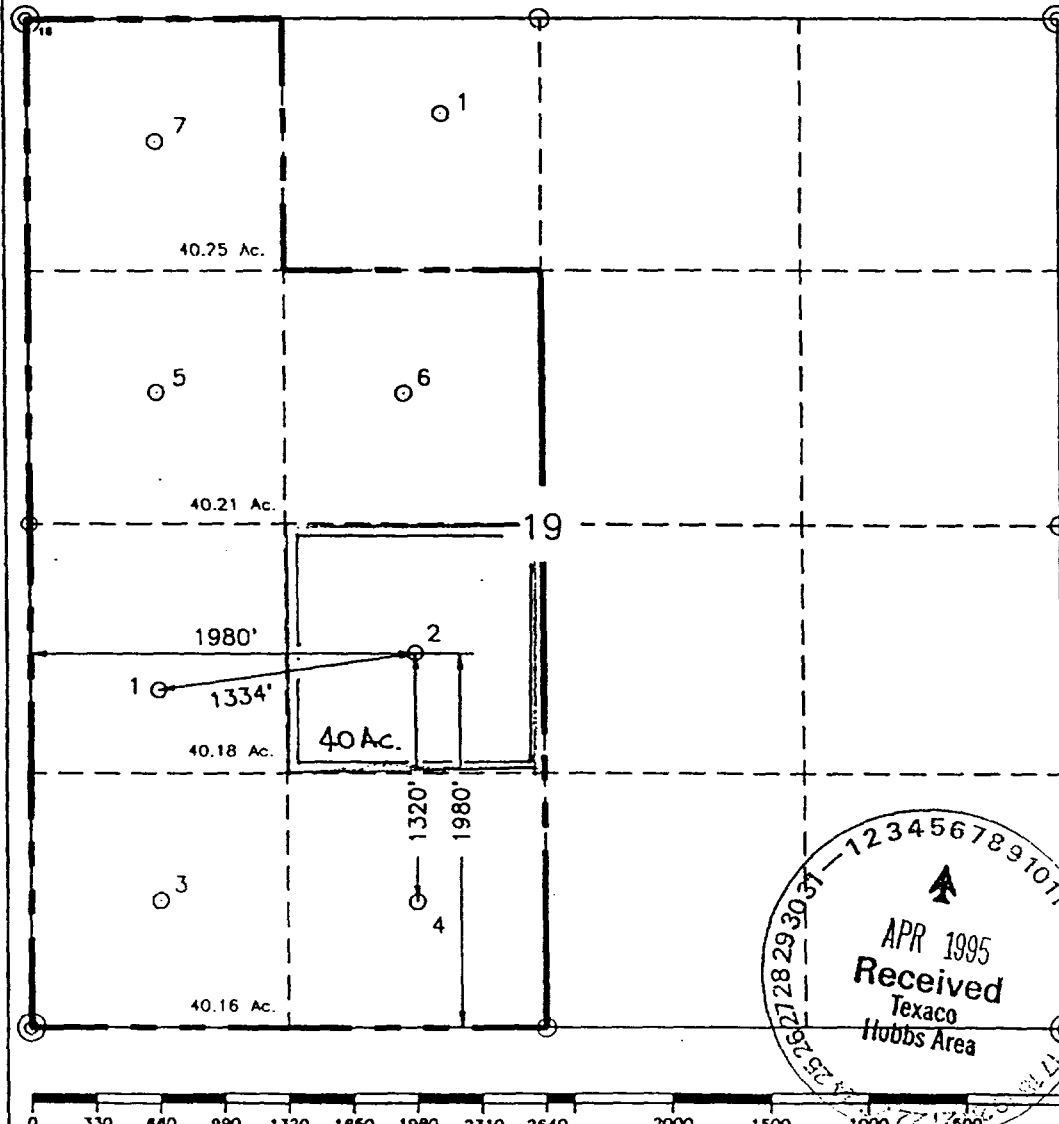
WELL LOCATION AND ACREAGE DEDICATION PLAT

¹ API Number 30-015-28400		² Pool Code 47545		³ Pool Name NASH DRAW-BRUSHY CANYON	
⁴ Property Code 17551		⁵ Property Name Remuda Basin State			⁶ Well Number 2
⁷ OGRID No. 22351		⁸ Operator Name TEXACO EXPLORATION & PRODUCTION, INC.			⁹ Elevation 3047

¹⁰ Surface Location									
UL or lot no.	Section	Township	Range	Lot Idn	Feet from the	North/South line	Feet from the	East/West line	⁷ County
K	19	23-S	30-E		1980'	South	1980'	West	Eddy

¹¹ Bottom Hole Location If Different From Surface									
UL or lot no.	Section	Township	Range	Lot Idn	Feet from the	North/South line	Feet from the	East/West line	⁷ County
¹² Dedicated Acres 40		¹³ Joint or Infill		¹⁴ Consolidation Code		¹⁵ Order No.			

NO ALLOWABLE WILL BE ASSIGNED TO THIS COMPLETION UNTIL ALL INTERESTS HAVE BEEN CONSOLIDATED
OR A NON-STANDARD UNIT HAS BEEN APPROVED BY THE DIVISION.

	¹⁶OPERATOR CERTIFICATION I hereby certify that the information contained herein is true and complete to the best of my knowledge and belief.
	Signature <i>C. Wade Howard</i>
	Printed Name C. Wade Howard
	Position Engineer's Assistant
	Company Texaco Expl. & Prod. Inc.
Date February 24, 1995	
¹⁷SURVEYOR CERTIFICATION I hereby certify that the well location shown on this plat was plotted from field notes of actual surveys made by me or under my supervision, and that the same is true and correct to the best of my knowledge and belief.	
Date Surveyed February 3, 1995	
Signature & Seal of Professional Surveyor <i>John S. Piper</i>	
Certificate No. 7254 John S. Piper	
Sheet	

APR 1995
Received
Texaco
Hobbs Area

DISTRICT I

P.O. Box 1980, Hobbs, NM 88241-1980

DISTRICT II

P.O. Box Drawer DD, Artesia, NM 88211-0719

DISTRICT III

1000 Rio Brazos Rd., Aztec, NM 87410

DISTRICT IV

P.O. Box 2088, Santa Fe, NM 87504-2088

State of New Mexico

Energy, Minerals and Natural Resources Department

Form C-102

Revised February 10, 1994

Instructions on back

Submit to Appropriate District Office

State Lease - 4 Copies

Fee Lease - 3 Copies

☐ AMENDED REPORT

OIL CONSERVATION DIVISION

P.O. Box 2088

Santa Fe, New Mexico 87504-2088

WELL LOCATION AND ACREAGE DEDICATION PLAT

¹ API Number 30-015-28401	² Pool Code 96477	³ Pool Name FORTY NINER RIDGE DELAWARE
⁴ Property Code 17551	⁵ Property Name REMUDA BASIN STATE	⁶ Well No. 3
⁷ OGRID Number 022351	⁸ Operator Name TEXACO EXPLORATION & PRODUCTION INC.	⁹ Elevation 3074'

¹⁰ Surface Location

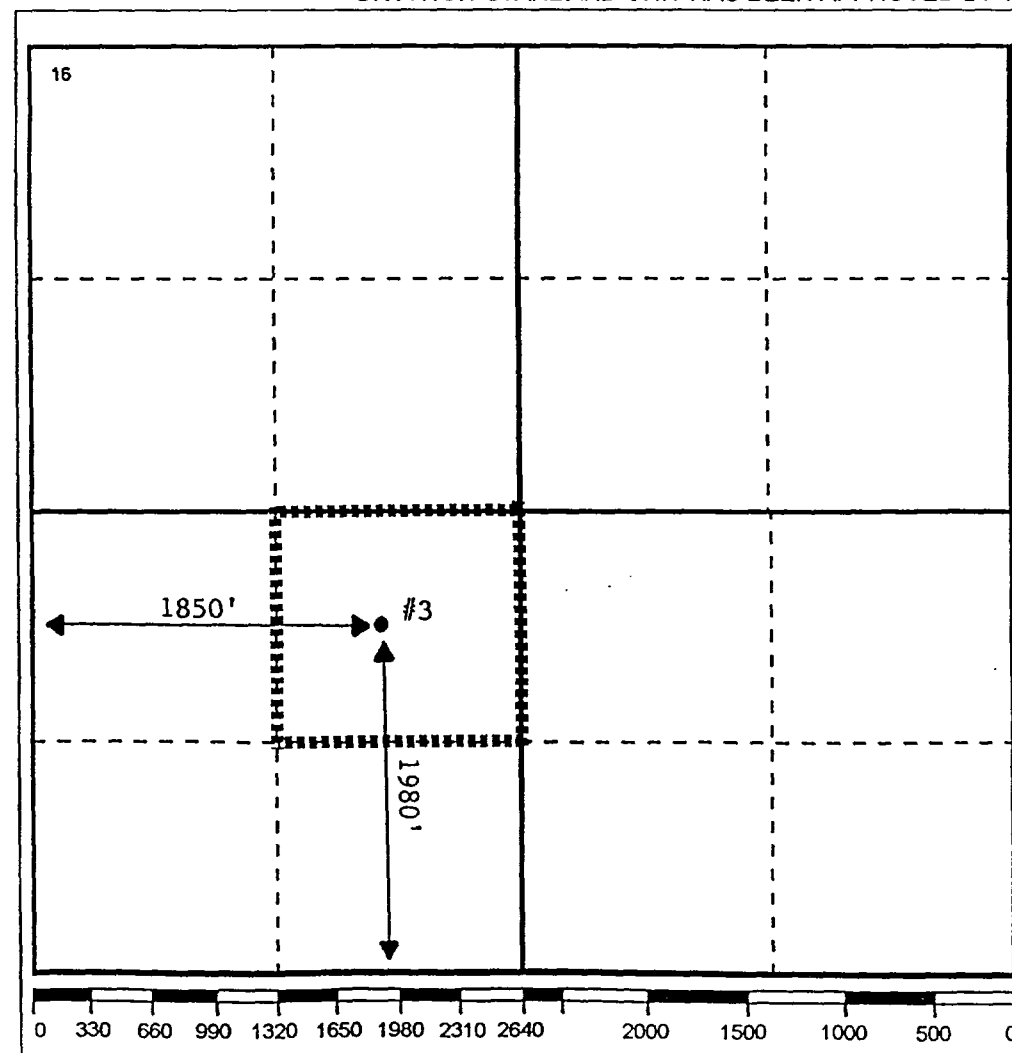
Ul or lot no.	Section	Township	Range	Lot.Idn	Feet From The	North/South Line	Feet From The	East/West Line	County
K	30	23-S	30-E		1980	SOUTH	1980	WEST	EDDY

¹¹ Bottom Hole Location If Different From Surface

Ul or lot no.	Section	Township	Range	Lot.Idn	Feet From The	North/South Line	Feet From The	East/West Line	County
---------------	---------	----------	-------	---------	---------------	------------------	---------------	----------------	--------

¹² Dedicated Acres 40	¹³ Joint or Infill No	¹⁴ Consolidation Code	¹⁵ Order No.
-------------------------------------	-------------------------------------	----------------------------------	-------------------------

NO ALLOWABLE WILL BE ASSIGNED TO THIS COMPLETION UNTIL ALL INTERESTS HAVE BEEN CONSOLIDATED
OR A NON-STANDARD UNIT HAS BEEN APPROVED BY THE DIVISION



17 OPERATOR CERTIFICATION

I hereby certify that the information contained herein is true and complete to the best of my knowledge and belief

Signature

Printed Name

Monte C. Duncan

Position

Engr Asst

Date

2/8/96

18 SURVEYOR CERTIFICATION

I hereby certify that the well location shown on this plat was plotted from field notes of actual surveys made by me or under my supervision, and that the same is true and correct to the best of my knowledge and belief.

Date Surveyed

Signature & Seal of
Professional Surveyor

Certificate No.

DISTRICT I
P. O. Box 1980, Hobbs, NM 88240

DISTRICT II
P. O. Drawer D0, Artesia, NM 88210

DISTRICT III
1000 Rio Brazos Rd., Aztec, NM 87410

DISTRICT IV
P. O. Box 2088, Santa Fe, NM 87504-2088

State of New Mexico
Energy, Minerals and Natural Resources Department

OIL CONSERVATION DIVISION

PO Box 2088
Santa Fe, NM 87504-2088

Form C-102
Revised February 10, 1994

Instructions on back

Submit to Appropriate District Office

State Lease-4 copies
Fee Lease-3 copies

☐ AMENDED REPORT

WELL LOCATION AND ACREAGE DEDICATION PLAT

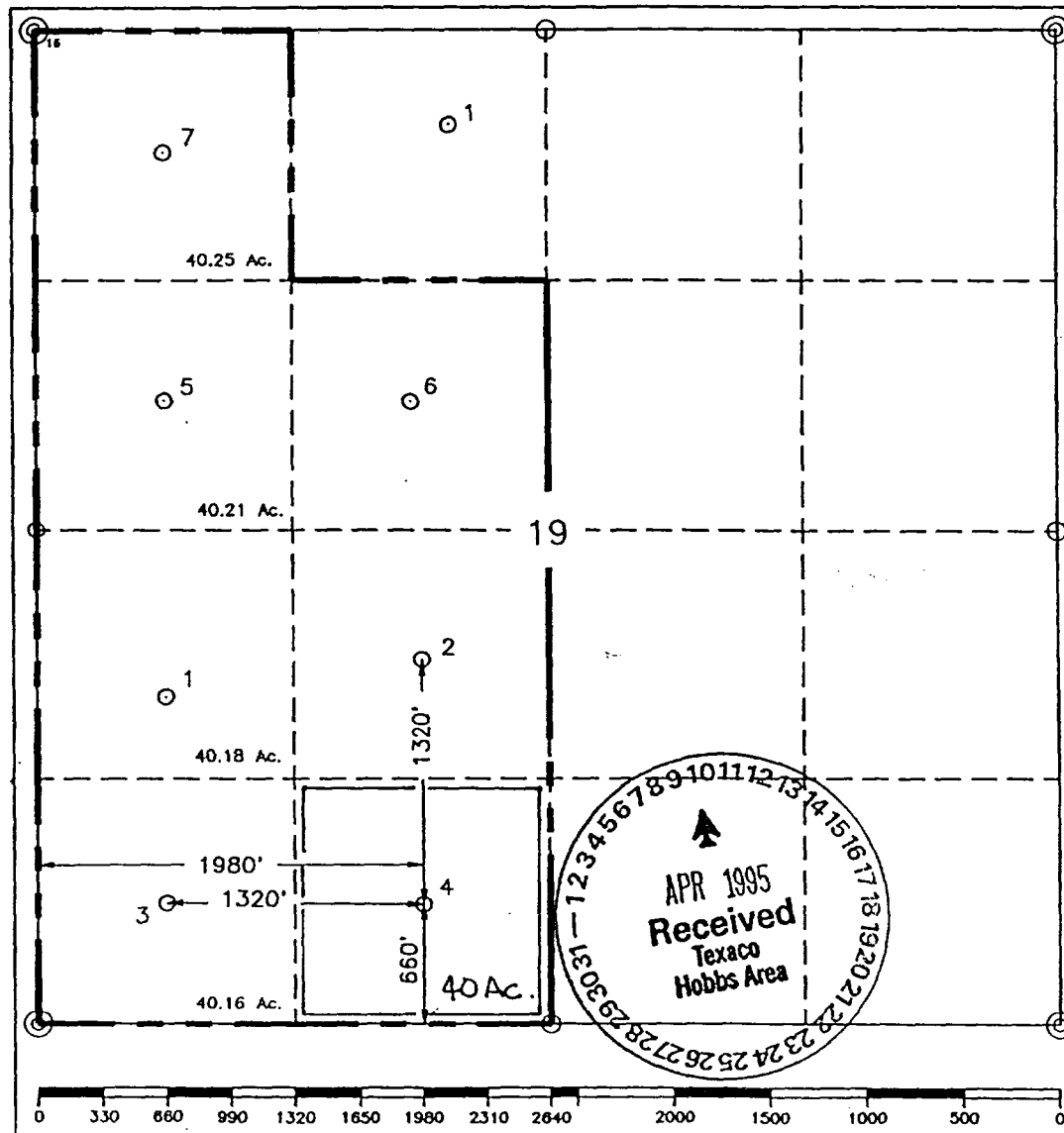
¹ API Number 30-015-28420	² Pool Code 47545	³ Pool Name NASH DRAW-BRUSHY CANYON
⁴ Property Code 17551	⁵ Property Name Remuda Basin State	⁶ Well Number 4
⁷ GRID No. 22351	⁸ Operator Name TEXACO EXPLORATION & PRODUCTION, INC.	⁹ Elevation 3041

¹⁰ Surface Location									
UL or lot no. N	Section 19	Township 23-S	Range 30-E	Lot Idn	Feet from the 660'	North/South line South	Feet from the 1980'	East/West line West	⁷ County Eddy

¹¹ Bottom Hole Location If Different From Surface									
UL or lot no.	Section	Township	Range	Lot Idn	Feet from the	North/South line	Feet from the	East/West line	⁷ County

¹² Dedicated Acres 40	¹³ Joint or Infill	¹⁴ Consolidation Code	¹⁵ Order No.
-------------------------------------	-------------------------------	----------------------------------	-------------------------

NO ALLOWABLE WILL BE ASSIGNED TO THIS COMPLETION UNTIL ALL INTERESTS HAVE BEEN CONSOLIDATED
OR A NON-STANDARD UNIT HAS BEEN APPROVED BY THE DIVISION.

	<p>¹⁰OPERATOR CERTIFICATION</p> <p>I hereby certify that the information contained herein is true and complete to the best of my knowledge and belief.</p> <p>Signature <i>C. Wade Howard</i></p> <p>Printed Name C. Wade Howard</p> <p>Position Engineer's Assistant</p> <p>Company Texaco Expl. & Prod. Inc.</p> <p>Date February 24, 1995</p> <p>¹⁶SURVEYOR CERTIFICATION</p> <p>I hereby certify that the well location shown on this plat was plotted from field notes of actual surveys made by me or under my supervision, and that the same is true and correct to the best of my knowledge and belief.</p> <p>Date Surveyed February 3, 1995</p> <p>Signature & Seal of Professional Surveyor <i>John S. Piper</i></p> <p>Certificate No. 7254 John S. Piper</p> <p>Sheet</p>
--	--

DISTRICT I
P. O. Box 1980, Hobbs, NM 88240

DISTRICT II
P. O. Drawer DD, Artesia, NM 88210

DISTRICT III
1000 Rio Brazos Rd., Aztec, NM 87410

DISTRICT IV
P. O. Box 2088, Santa Fe, NM 87504-2088

State of New Mexico
Energy, Minerals and Natural Resources Department

OIL CONSERVATION DIVISION
PO Box 2088
Santa Fe, NM 87504-2088

Form C-102
Revised February 10, 1994

Instructions on back

Submit to Appropriate District Office

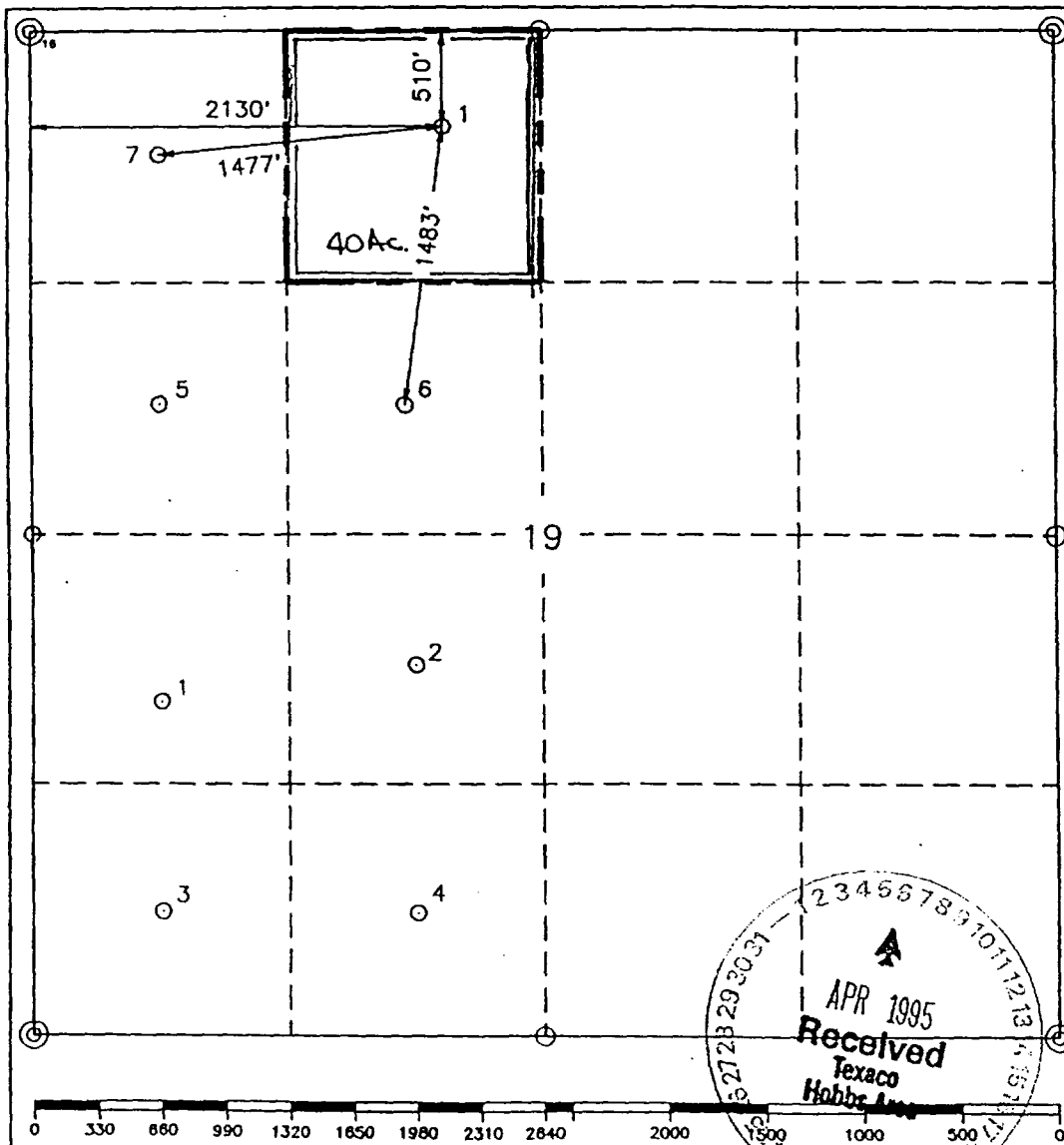
State Lease-4 copies
Fee Lease-3 copies

☐ AMENDED REPORT

WELL LOCATION AND ACREAGE DEDICATION PLAT

¹ API Number 30-015-28398		² Pool Code 47545		³ Pool Name NASH DRAW-BRUSHY CANYON					
⁴ Property Code 16859		⁵ Property Name Remuda Basin "19" Fee				⁶ Well Number 1			
⁷ OGRID No. 22351		⁸ Operator Name TEXACO EXPLORATION & PRODUCTION, INC.				⁹ Elevation 3054			
¹⁰ Surface Location									
UL or lot no. C	Section 19	Township 23-S	Range 30-E	Lot Idn	Feet from the 510'	North/South line North	Feet from the 2130'	East/West line West	County Eddy
¹¹ Bottom Hole Location If Different From Surface									
UL or lot no.	Section	Township	Range	Lot Idn	Feet from the	North/South line	Feet from the	East/West line	County
¹² Dedicated Acres 40		¹³ Joint or Infill		¹⁴ Consolidation Code		¹⁵ Order No.			

NO ALLOWABLE WILL BE ASSIGNED TO THIS COMPLETION UNTIL ALL INTERESTS HAVE BEEN CONSOLIDATED
OR A NON-STANDARD UNIT HAS BEEN APPROVED BY THE DIVISION.



¹⁶ OPERATOR CERTIFICATION

I hereby certify that the information contained herein is true and complete to the best of my knowledge and belief.

Signature

Printed Name

C. Wade Howard

Position

Engineer's Assistant

Company

Texaco Expl. & Prod. Inc.

Date

February 24, 1995

¹⁷ SURVEYOR CERTIFICATION

I hereby certify that the well location shown on this plat was plotted from field notes of actual surveys made by me or under my supervision, and that the same is true and correct to the best of my knowledge and belief.

Date Surveyed

February 3, 1995

Signature & Seal of Professional Surveyor

Certificate No.

7254 John S. Piper

Sheet

○ = Staked Location • = Producing Well ● = Injection Well

DISTRICT I
P. O. Box 1980, Hobbs, NM 88240

DISTRICT II
P. O. Drawer DD, Artesia, NM 88210

DISTRICT III
1000 Rio Brazos Rd., Artesia, NM 87410

DISTRICT IV
P. O. Box 2088, Santa Fe, NM 87504-2088

State of New Mexico
Energy, Minerals and Natural Resources Department

OIL CONSERVATION DIVISION

PO Box 2088
Santa Fe, NM 87504-2088

Form C-10
Revised February 10, 199

Instructions on back

Submit to Appropriate District Office

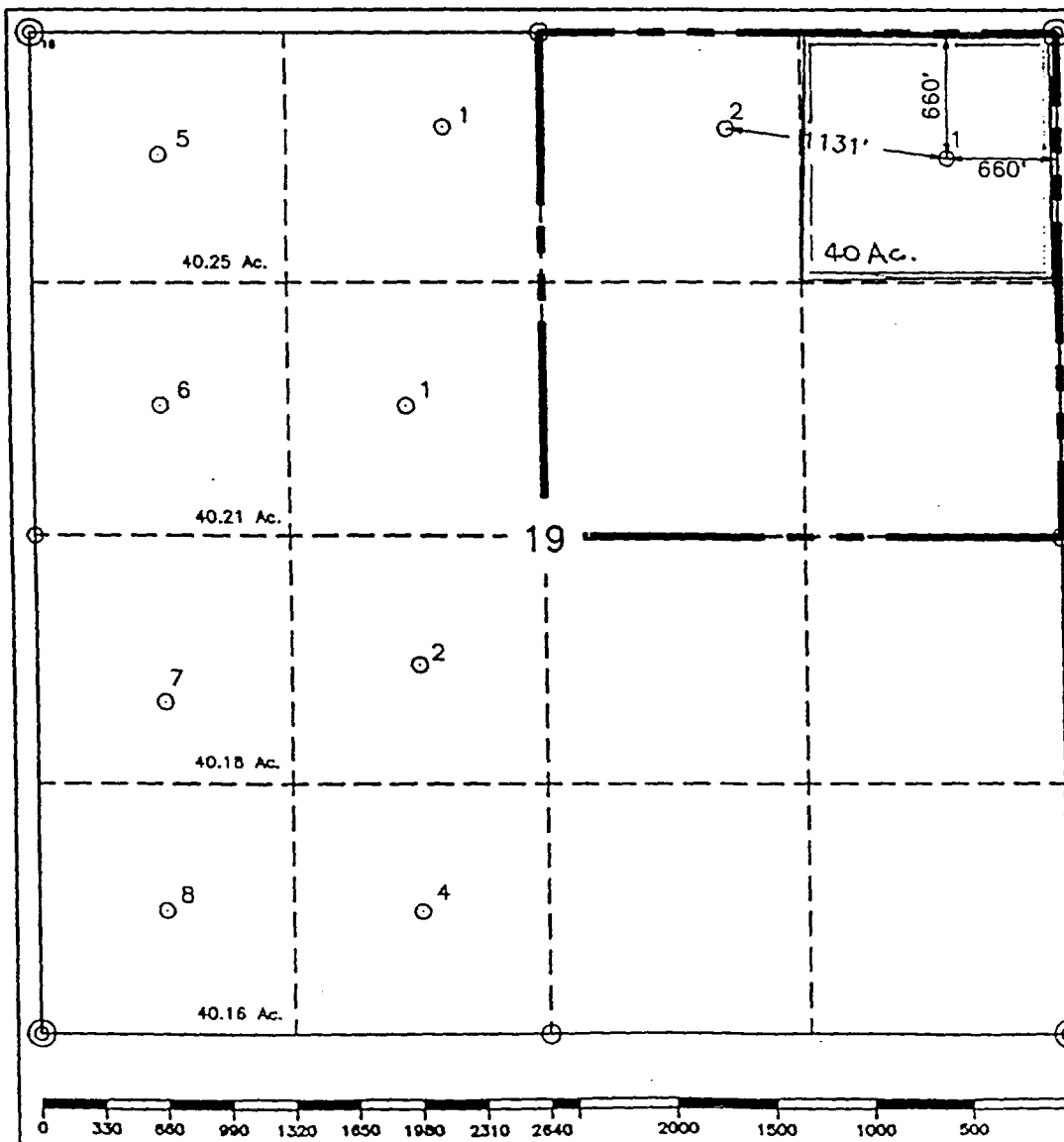
State Lease-4 copie
Fee Lease-3 copie

☐ AMENDED REPORT

WELL LOCATION AND ACREAGE DEDICATION PLAT

¹ API Number 30-015-28901		² Pool Code 47545		³ Pool Name NASH DRAW-BRUSHY CANYON					
⁴ Property Code 18768		⁵ Property Name Remuda Basin "19" Federal				⁶ Well Number 1			
⁷ OGRID No. 22351		⁸ Operator Name TEXACO EXPLORATION & PRODUCTION, INC.				⁹ Elevation 3104'			
¹⁰ Surface Location									
UL or lot no. A	Section 19	Township 23-S	Range 30-E	Lot Idn	Feet from the 660'	North/South line North	Feet from the 660'	East/West line East	County Eddy
¹¹ Bottom Hole Location If Different From Surface									
UL or lot no.	Section	Township	Range	Lot Idn	Feet from the	North/South line	Feet from the	East/West line	County
¹² Dedicated Acres 40		¹³ Joint or Infill		¹⁴ Consolidation Code		¹⁵ Order No.			

NO ALLOWABLE WILL BE ASSIGNED TO THIS COMPLETION UNTIL ALL INTERESTS HAVE BEEN CONSOLIDATED
OR A NON-STANDARD UNIT HAS BEEN APPROVED BY THE DIVISION.



¹⁶OPERATOR CERTIFICATION

I hereby certify that the information contained herein is true and complete to the best of my knowledge and belief.

Signature

Printed Name

C. Wade Howard

Position

Engineer's Assistant

Company

Texaco Expl. & Prod. Inc.

Date

January 16, 1996

¹⁷SURVEYOR CERTIFICATION

I hereby certify that the well location shown on this plat was plotted from field notes of actual surveys made by me or under my supervision and that the same is true and correct to the best of my knowledge and belief.

Date Surveyed

January 6, 1996

Signature & Seal of
Professional Surveyor

Certificate No.

7254 John S. Piper

Sheet

DISTRICT I
P. O. Box 1980, Hobbs, NM 88240

DISTRICT II
P. O. Drawer DD, Artesia, NM 88210

DISTRICT III
1000 Rio Brazos Rd., Aztec, NM 87410

DISTRICT IV
P. O. Box 2088, Santa Fe, NM 87504-2088

State of New Mexico
Energy, Minerals and Natural Resources Department

OIL CONSERVATION DIVISION
PO Box 2088
Santa Fe, NM 87504-2088

Form C-102
Revised February 10, 1994

Instructions on back

Submit to Appropriate District Office

State Lease-4 copies
Fee Lease-3 copies

☐ AMENDED REPORT

WELL LOCATION AND ACREAGE DEDICATION PLAT

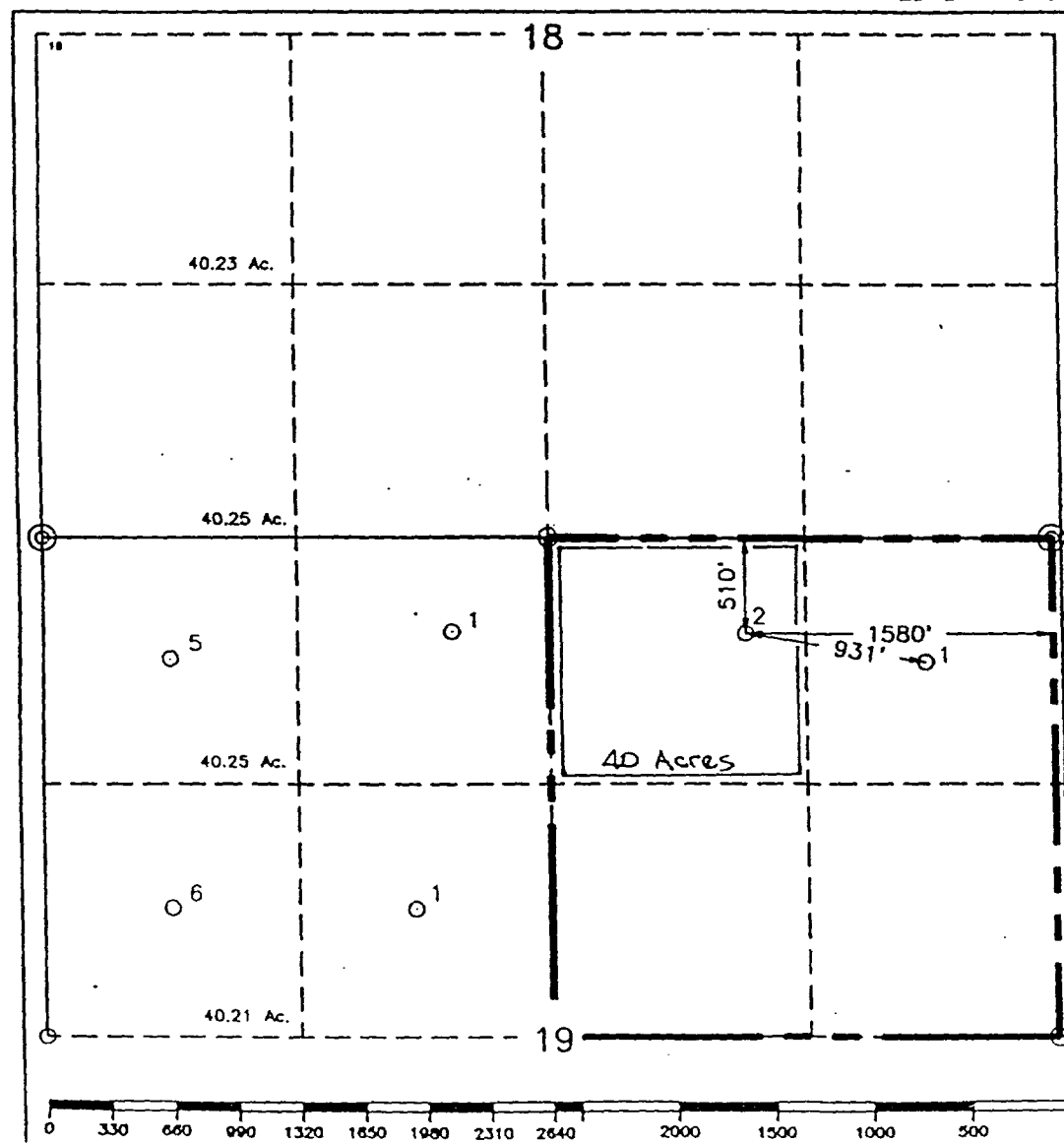
¹ API Number 30-015-28902		² Pool Code 47545		³ Pool Name NASH DRAW-BRUSHY CANYON		
⁴ Property Code 18768		⁵ Property Name Remuda Basin "19" Federal			⁶ Well Number 2	
⁷ OGRID No. 22351		⁸ Operator Name TEXACO EXPLORATION & PRODUCTION, INC.			⁹ Elevation 3083'	

¹⁰ Surface Location									
UL or lot no. B	Section 19	Township 23-S	Range 30-E	Lot Idn	Feet from the 510'	North/South line North	Feet from the 1580'	East/West line East	⁷ County Eddy

¹¹ Bottom Hole Location If Different From Surface									
UL or lot no.	Section	Township	Range	Lot Idn	Feet from the	North/South line	Feet from the	East/West line	⁷ County

¹² Dedicated Acres 40	¹³ Joint or Infill	¹⁴ Consolidation Code	¹⁵ Order No.
-------------------------------------	-------------------------------	----------------------------------	-------------------------

NO ALLOWABLE WILL BE ASSIGNED TO THIS COMPLETION UNTIL ALL INTERESTS HAVE BEEN CONSOLIDATED
OR A NON-STANDARD UNIT HAS BEEN APPROVED BY THE DMSION.



¹⁰ OPERATOR CERTIFICATION	
I hereby certify that the information contained herein is true and complete to the best of my knowledge and belief.	
Signature	<i>C. Wade Howard</i>
Printed Name	C. Wade Howard
Position	Engineer's Assistant
Company	Texaco Expl. & Prod. Inc.
Date	February 8, 1996
¹⁶ SURVEYOR CERTIFICATION	
I hereby certify that the well location shown on this plat was plotted from field notes of actual surveys made by me or under my supervision and that the same is true and correct to the best of my knowledge and belief.	
Date Surveyed	February 2, 1996
Signature & Seal of Professional Surveyor	<i>John S. Piper</i>
Certificate No.	7254 John S. Piper
Sheet	8 of 8

UNITED STATES
DEPARTMENT OF THE INTERIOR
BUREAU OF LAND MANAGEMENT

FORM APPROVED
Budget Bureau No. 1004-0135
Expires: March 31, 1993

SUNDRY NOTICES AND REPORTS ON WELLS

Do not use this form for proposals to drill or to deepen or reentry to a different reservoir.

Use "APPLICATION FOR PERMIT -" for such proposals

SUBMIT IN TRIPLICATE

1. Type of Well: ☐ OIL WELL ☐ GAS WELL ☐ OTHER

2. Name of Operator
TEXACO EXPLORATION & PRODUCTION INC.

3. Address and Telephone No. 205 E. Bender, HOBBS, NM 88240 397-0418

4. Location of Well (Footage, Sec., T., R., M., or Survey Description)
Unit Letter F : Feet From The Line and Feet From The
Line Section 19 Township 23S Range 30E

5. Lease Designation and Serial No.
NM-17056

6. If Indian, Allottee or Tribe Name

7. If Unit or CA, Agreement Designation

8. Well Name and Number
REMUDA BASIN 19 FEDERAL LEASE

9. API Well No.

10. Field and Pool, Exploaratory Area
NASH DRAW-BRUSHY CANYON

11. County or Parish, State
EDDY, NM

12. Check Appropriate Box(s) To Indicate Nature of Notice, Report, or Other Data

TYPE OF SUBMISSION

- ☐ Notice of Intent
☒ Subsequent Report
☐ Final Abandonment Notice

TYPE OF ACTION

- | | |
|--|--|
| <input type="checkbox"/> Abandonment | <input type="checkbox"/> Change of Plans |
| <input type="checkbox"/> Recompletion | <input type="checkbox"/> New Construction |
| <input type="checkbox"/> Plugging Back | <input type="checkbox"/> Non-Routine Fracturing |
| <input type="checkbox"/> Casing Repair | <input type="checkbox"/> Water Shut-Off |
| <input type="checkbox"/> Atlering Casing | <input type="checkbox"/> Conversion to Injection |
| <input checked="" type="checkbox"/> OTHER: SURFACE COMMINGLING | <input type="checkbox"/> Dispose Water |

(Note: Report results of multiple completion on Well Completion or Recompletion Report and Log Form.)

13. Describe Proposed or Completed Operations (Clearly state all pertinent details, and give pertinent dates, including estimated date of starting any proposed work. If well is directionally drilled, give subsurface locations and measured and true vertical depths for all markers and zones pertinent to this work.)

Texaco Exploration and Production Inc. requests permission to construct a common tank battery for the above lease in Unit Letter F, Section 19, T-23-S, R-30-E in Eddy County, N.M. TEPI also requests permission to surface commingle production from this federal lease with the production frome Remuda Basin 19 Fee lease and the Remuda Basin State lease. There is presently one active Remuda Basin 19 Fee well and four active Remuda Basin State wells. Two Remuda Basin 19 Federal wells are presently being drilled. Each royalty interest will produce into a three phase separator. The hydrocarbon streams (oil, gas) will be metered before they are commingled. The meters will be turbine meters with non-resettable counters and proving loops will be installed so that each meter can be proven as required. A test separator will be installed to conduct monthly well tests. The State and Federal royalty interest wells will utilize the same test separator. Valves will be mechanically linked such that outgoing streams from the test vessel must return to the appropriate production vessel for metering prior to commingling. There will be one well producing into the Fee separator. This well will not be routed to the test separator. Pressure will be regulated on the production separators by a single back pressure valve to ensure that all three vessels are operating at the same pressure. It will be necessary to install a back pressure valve on the test separator. The test separator will have to operate at a higher pressure than the production vessels in order to be able to dump back into them. Fluids from the production separators will be combined in a FWKO for final treatment and separation of the two fluid phases. Fluids will be dumped to the appropriate tanks. A circulating pump will be installed to move water or bad oil from the tanks. The circulating pump will pump into the FWKO. Total production at the battery will be allocated back to each royalty interest lease based on the production separator meters. Monthly production will then be allocated back to each well based on well tests and the amount of oil allocated back to each royalty interest lease.

Attached for the BLM's information are:

1. A map showing the lease and location of all the wells that will contribute production to the facility.
2. A battery schematic diagram showing the change to one production separator for both pools.
3. A BLM application for surface commingling and measurement approval.

14. I hereby certify that the foregoing is true and correct

SIGNATURE Monte C. Duncan TITLE Engr Asst DATE 4/18/96

TYPE OR PRINT NAME Monte C. Duncan

(This space for Federal or State office use)

APPROVED BY _____ TITLE _____ DATE _____

CONDITIONS OF APPROVAL, IF ANY:

Title 18 U.S.C. Section 1001, makes it a crime for any person knowingly and willfully to make to any department or agency of the United States any false, fictitious or fraudulent statements or representations as to any matter within its jurisdiction.

CRA BLM FORMAT

APPLICATION FOR SURFACE COMMINGLING,
OFF LEASE STORAGE AND MEASUREMENT

To: Bureau of Land Management
P.O. Box 1778
Carlsbad, New Mexico 88221-1778

Texaco E & P Inc. (Operator's name) is requesting approval for surface commingling and off-lease storage and measurement of hydrocarbon production from the following formation(s) and well(s) on Federal Lease No. NM-17056; Lease Name: REMUDA BASIN 19 FEDERAL

Well

<u>No.</u>	<u>Loc.</u>	<u>Sec.</u>	<u>Twp.</u>	<u>Rng.</u>	<u>Formation</u>
<u>Remuda Basin 19 Fed #1</u>	<u>A</u>	<u>19</u>	<u>23-S</u>	<u>30-E</u>	<u>Nash Draw-Brushy Canyon</u>
<u>Remuda Basin 19 Fed #2</u>	<u>B</u>	<u>19</u>	<u>23-S</u>	<u>30-E</u>	<u>Nash Draw-Brushy Canyon</u>

with hydrocarbon production from the following formation(s) and well(s) on Fee lease No. _____; Lease Name: REMUDA BASIN 19 FEE

Well

<u>No.</u>	<u>Loc.</u>	<u>Sec.</u>	<u>Twp.</u>	<u>Rng.</u>	<u>Formation</u>
<u>Remuda Basin 19 Fee #1</u>	<u>C</u>	<u>19</u>	<u>23-S</u>	<u>30-E</u>	<u>Nash Draw-Brushy Canyon</u>

with hydrocarbon production from the following formation(s) and well(s) on Fee lease No. B-1306; Lease Name: REMUDA BASIN STATE

Well

<u>No.</u>	<u>Loc.</u>	<u>Sec.</u>	<u>Twp.</u>	<u>Rng.</u>	<u>Formation</u>
<u>Remuda Basin State #1</u>	<u>F</u>	<u>19</u>	<u>23-S</u>	<u>30-E</u>	<u>Nash Draw-Brushy Canyon</u>
<u>Remuda Basin State #2</u>	<u>K</u>	<u>19</u>	<u>23-S</u>	<u>30-E</u>	<u>Nash Draw-Brushy Canyon</u>
<u>Remuda Basin State #3</u>	<u>K</u>	<u>30</u>	<u>23-S</u>	<u>30-E</u>	<u>Forty Niner Ridge Delaware</u>
<u>Remuda Basin State #4</u>	<u>N</u>	<u>19</u>	<u>23-S</u>	<u>30-E</u>	<u>Nash Draw-Brushy Canyon</u>

Production from the wells involved is as follows:

<u>Well Name and No.</u>	<u>BOPD</u>	<u>Oil Gravity</u>	<u>MCFPD</u>	<u>Choke</u>
<u>Remuda Basin 19 Fed #1</u>	<u>To be drilled after #2</u>	-	-	-
<u>Remuda Basin 19 Fed #2</u>	<u>Drilling</u>	-	-	-
<u>Remuda Basin 19 Fee #1</u>	<u>132</u>	<u>43.9</u>	<u>256</u>	<u>26/64</u>
<u>Remuda Basin State #1</u>	<u>161</u>	<u>40.8</u>	<u>412</u>	<u>26/64</u>
<u>Remuda Basin State #2</u>	<u>137</u>	<u>41.0</u>	<u>570</u>	<u>24/64</u>
<u>Remuda Basin State #3</u>	<u>106</u>	<u>42.2</u>	<u>83</u>	-
<u>Remuda Basin State #4</u>	<u>74</u>	<u>41.8</u>	<u>393</u>	-

The proposed operation is described in detail on the attached diagrams.

A map is enclosed showing the lease numbers and location of all leases and wells that will contribute production to the proposed commingling/common storage facility. All unitized/ communitized areas, producing zones/pools are also clearly illustrated.

A schematic diagram is also attached which clearly identifies all equipment that will be utilized.

The storage and measuring facility is located at Unit Ltr. E, Section 19, T-23-S, R-30-E, on lease No. B-1306, Eddy County, New Mexico. BLM will be notified if there is any future change in the facility location.

Details of the proposed method for allocating production to contribution sources is as follows:

Please see the attached diagram depicting the lease commingling facility installation. This installation is in compliance with the "Manual for the Installation and Operation of Commingling Facilities" which is published by the New Mexico Oil Conservation Division. There is presently one active Remuda Basin 19 Fee well and four active Remuda Basin State wells. Two Remuda Basin 19 Federal wells are presently being drilled. Each royalty interest will produce into a three phase separator. The hydrocarbon streams (oil, gas) will be metered before they are commingled. The meters will be turbine meters with non-resettable counters and proving loops will be installed so that each meter can be proven as required. A test separator will be installed to conduct monthly well tests. The State and Federal royalty interest wells will utilize the same test separator. Three way valves will be

mechanically linked such that outgoing streams from the test vessel must return to the appropriate production vessel for metering prior to commingling. There will be one well producing into the Fee separator. This well will not be routed to the test separator. Pressure will be regulated on the production separators by a single back pressure valve to ensure that all three vessels are operating at the same pressure. It will be necessary to install a back pressure valve on the test separator. The test separator will have to operate at a higher pressure than the production vessels in order to be able to dump back into them. Fluids from the production separators will be combined in a FWKO for final treatment and separation of the two fluid phases. Fluids will be dumped to the appropriate tanks. A circulating pump will be installed to move water or bad oil from the tanks. The circulating pump will pump into the FWKO. Total production at the battery will be allocated back to each royalty interest lease based on the production separator meters. Monthly production will then be allocated back to each well based on well tests and the amount of oil allocated back to each royalty interest lease.

The working interest owners have been notified of the proposal.

The proposed commingling of production is in the interest of conservation and will not result in reduced royalty or improper measurement of production.

The proposed commingling is necessary for continued operation of the above referenced Federal leases.

We understand that the requested approval will not constitute the granting of any right-of-way or construction rights not granted by the lease instrument. And we will submit within 30 days an application for right-of-way approval to the BLM's Realty Section in your office if we have not already done so.

Additional well require additional commingling approvals.

Signature: Monte C. Duncan

Name: Monte C. Duncan

Title: Engr's Assistant

Date: April 19, 1996

Remuda Basin Consolidated Tank Battery

Process Description

Three different royalty interest leases will produce into this battery (Federal, State, Fee). Each royalty interest will produce into a three phase separator. The hydrocarbon streams (oil, gas) will be metered before they are commingled. The meters will be turbine meters with non-resettable counters and proving loops will be installed so that each meter can be proven as required.

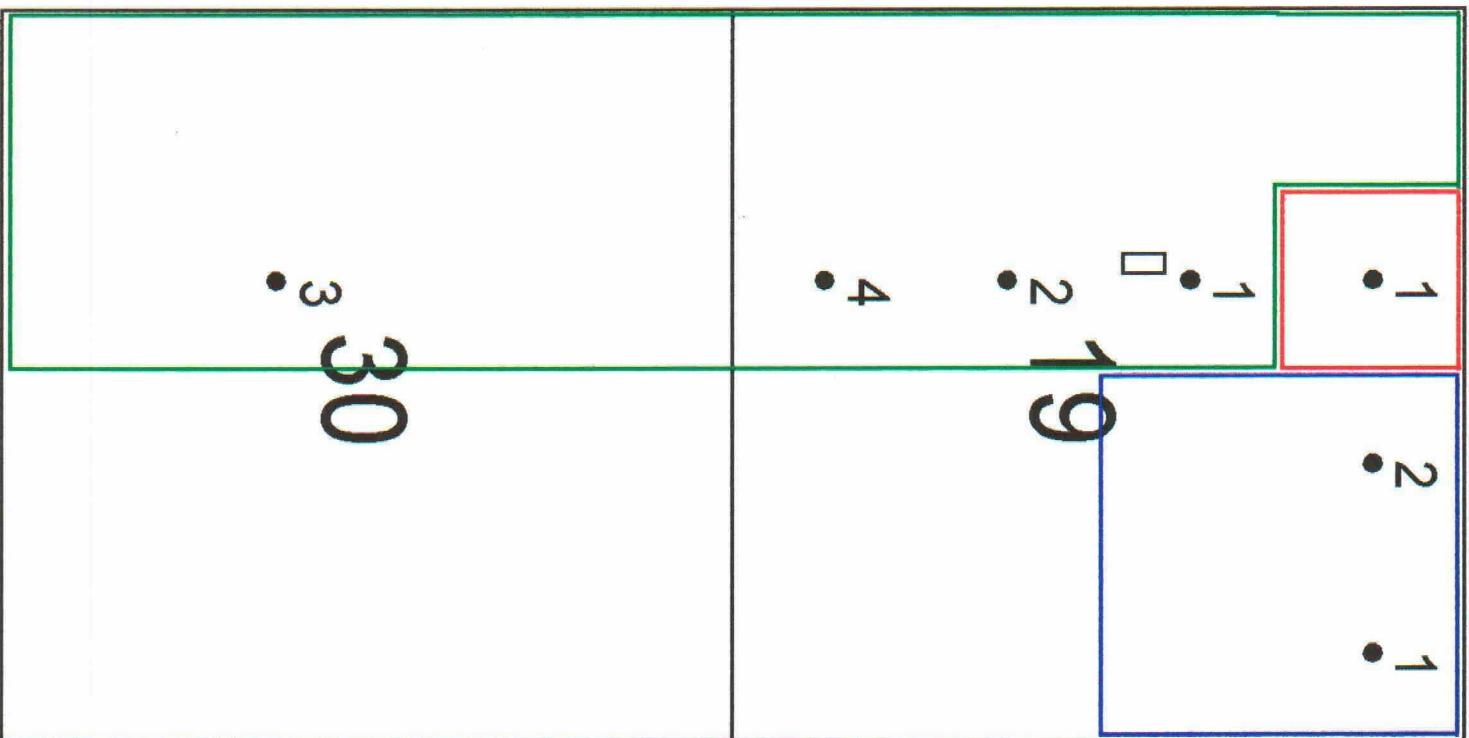
A test separator will be installed to conduct monthly well tests. The State and Federal royalty interest wells will utilize the same test separator. Three way valves will be mechanically linked such that outgoing streams from the test vessel must return to the appropriate production vessel for metering prior to commingling.

There will be one well producing into the Fee separator. This well will not be routed to the test separator.

Pressure will be regulated on the production separators by a single back pressure valve to ensure that all three vessels are operating at the same pressure. It will be necessary to install a back pressure valve on the test separator. The test separator will have to operate at a higher pressure than the production vessels in order to be able to dump back into them.

Fluids from the production separators will be combined in a FWKO for final treatment and separation of the two fluid phases. Fluids will be dumped to the appropriate tanks. A circulating pump will be installed to move water or bad oil from the tanks. The circulating pump will pump into the FWKO.

Total production at the battery will be allocated back to each royalty interest lease based on the production separator meters. Monthly production will then be allocated back to each well based on well tests and the amount of oil allocated back to each royalty interest lease.



□ Tank Battery

— Remuda Basin State

— Remuda Basin '19' Fee

— Remuda Basin '19' Federal

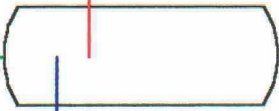
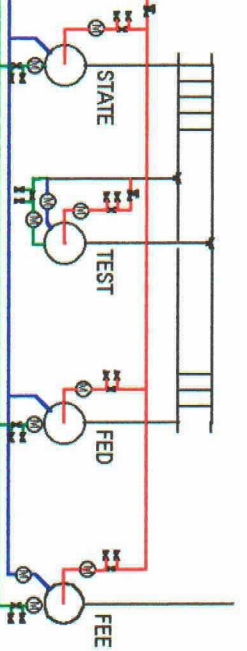
T-23-S, R-30-E

Eddy County, NM

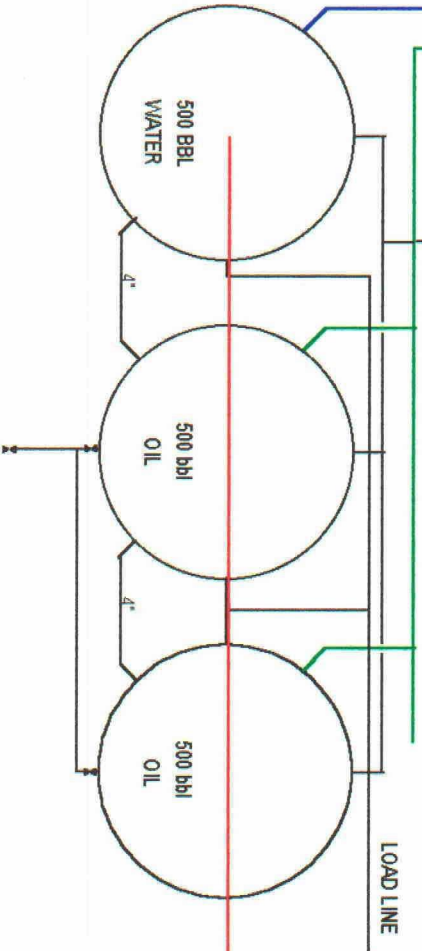
Texaco Expl. & Prod. Inc.



TO GAS SALES



CIRC PUMP



TEXACO EXPL AND PROD INC

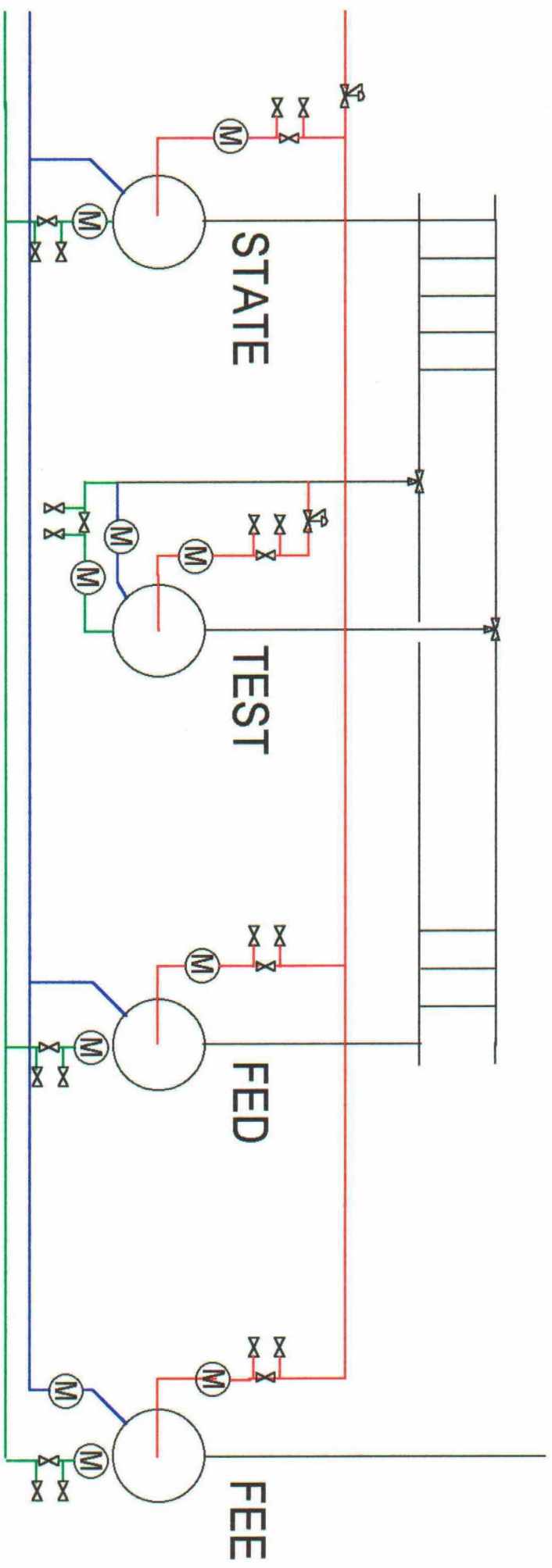
REMUDA BASIN T/B

Sec 19, T-23-S, R-30-E

Eddy County, New Mexico

- | | | | |
|---|---------|---|---------------------|
| — | Mixture | ⊗ | Meter |
| — | Gas | ⋈ | 3-way valve |
| — | Water | ⌞ | Back pressure valve |
| — | Oil | | |

Separator Detail



CERTIFIED MAIL

April 18, 1996

To: MINERAL INTEREST HOLDERS

**Subject: Mineral Interest Holder Notification
Application for Surface Commingling and Off-Lease Storage
Remuda Basin 19 Fee Lease
Remuda Basin State Lease
Remuda Basin 19 Federal Lease
Common Tank Battery located in
Unit Letter F, Section 19, T-23-S, R-30-E
Eddy County, New Mexico**

Attached are copies of Texaco Exploration and Production Inc.'s applications to the United States Bureau of Land Management and the New Mexico Oil Conservation Division for surface commingling and off-lease storage of production from the Remuda Basin 19 Fee lease, Remuda Basin State lease, and the Remuda Basin 19 Federal lease. Also attached, for your information, is a brief explanation and description of the lease commingling process.

New Mexico Oil Conservation Division regulations require any objections to this proposal be made within twenty days of the receipt of this letter. If you have any questions concerning this proposal, please contact Monte Duncan at (505) 397-0418.

Thank you for your consideration of this proposal.

Sincerely,



Monte C. Duncan
Engineer Assistant
Hobbs Operating Unit

MCD/s
File
Chrono

Attachments

Mineral Interest Holders:

Please indicate your approval for our request as detailed in the attached package by signing the waiver form below. Please return the signed waiver in the enclosed self-addressed envelope.

Thank you for your cooperation in this matter.

WAIVER TO OBJECTION

TEXACO EXPLORATION AND PRODUCTION INC.

**Application for the
Surface Commingling and Off-Lease Storage
Remuda Basin 19 Fee Lease
Remuda Basin State Lease
Remuda Basin 19 Federal Lease
Common Tank Battery located in
Unit Letter F, Section 19, T-23-S, R-30-E
Eddy County, New Mexico**

I do hereby waive any objection to Texaco Exploration and Production Inc.'s request for NMOCD Administrative Approval of surface commingling and Off-Lease Storage of the above lease as outlined in the application package.

Signed: _____
Title: _____
Company: _____
Date: _____

Lease Commingling

Texaco Exploration and Production Inc. has sent applications to the United States Bureau of Land Management and the New Mexico Oil Conservation Division for surface commingling and off-lease storage of production from the Remuda Basin 19 Fee lease, Remuda Basin State lease, and the Remuda Basin 19 Federal lease in a common tank battery located in Unit letter F, Section 19, Township 23 South, Range 30 East in Eddy County, New Mexico (please refer to the map of this area, which is included with the attached application).

Lease commingling is a process commonly used in the oil industry whereby production from one lease gets mixed or *commingled* with production from a different lease in a common storage facility. State regulations **require** the operator to meter production from each lease separately prior to commingling. The installation of commingling facilities is required to comply with the "Manual for the Installation and Operation of Commingling Facilities" published by the New Mexico Oil Conservation Division. The operator can officially apply (to the NMOCD) for lease commingling if the subject facility installation is in compliance with this manual.

Texaco believes that the commingling of production from these three leases into one commingled tank battery will save approximately \$150,000 in comparison to constructing three separate tank batteries. **This savings will benefit the operator and the royalty holders by decreasing lease expenses and thus increasing the economic life of the overall project.**

Texaco believes that the proposed facility installation will provide a fail-safe means to accurately measure produced hydrocarbons from the each of the three leases prior to commingling. This installation (please see the diagram in the application) is designed for increased accuracy above and beyond the minimum requirements outlined in the "Manual for the Installation and Operation of Commingling Facilities" published by the NMOCD.

**Mineral Interest Owners
Remuda Basin 19 Fee Lease**

Frank Briones
333 East Main
Farmington, NM 87401

Felix Briones Jr.
333 East Main
Farmington, NM 87401

Robert Hanagan
PO Box 329
Roswell, NM 88202

Hugh Hanagan
Betty Hanagan
PO Box 329
Roswell, NM 88202

Debra Hill
PO Box 329
Roswell, NM 88202

Cynthia Ann Kelly
4807 64th Street
Lubbock, TX 79414

Charles James
1207 West Riverside
Carlsbad, NM 88220

T.T. Sanders Jr.
PO Box 550
Roswell, NM 88202

Alice Eubank
2007 Gwenda Drive
Carlsbad, NM 88220

Robert James
PO Box 855
Carlsbad, NM 88221

James Kaucher
727 Park Wind Drive
Katy, Texas 77450

Richard Kaucher
15705 Sierra
Houston, TX 77040

Dianne Mary Truitt
15006 Falling Creek Dr.
Houston, TX 77068

Robert Kaucher
3425 Foxridge Dr.
Colorado Springs, CO
80916

Kathleen George
2004 SW Brighton PL
Blue Springs, MO
64015

Michael R. Broderick
701 NW Station Dr.
Lees Summit, MO 64063

Christopher A. Broderick
2204 NE Chipman Road
Lees, Summit, MO 64063

Ross E. Broderick
3106 East 87th Street
Kansas City, KS 64132

Perry R. Bass, Trustee
Attn: J. Smitherman
6 Desta Dr, Ste 3700
Midland, TX 79702

Thru Line, Inc.
Attn: J. Smitherman
6 Desta Dr, Ste 3700
Midland, TX 79702

Keystone, Inc.
Attn: J. Smitherman
6 Desta Dr, Ste 3700
Midland, TX 79702

Lee M. Bass, Inc.
Attn: J. Smitherman
6 Desta Dr, Ste 3700
Midland, TX 79702

Sid R. Bass, Inc.
Attn: J. Smitherman
6 Desta Dr, Ste 3700
Midland, TX 79702

P 622 713 448

US Postal Service
Receipt for Certified Mail
No Insurance Coverage Provided

Cynthia Ann Kelly
4807 64th Street
Lubbock, TX 79414

Postage	\$
Certified Fee	
Special Delivery Fee	
Restricted Delivery Fee	
Return Receipt Showing to Whom & Date Delivered	
Return Receipt Showing to Whom, Date, & Addressee's Address	
TOTAL Postage & Fees	\$
Postmark or Date	APR 12 1995 LUBBOCK TX

P 622 713 449

US Postal Service
Receipt for Certified Mail

Robert Hanagan
PO Box 329
Roswell, NM 88202

Postage	\$
Certified Fee	
Special Delivery Fee	
Restricted Delivery Fee	
Return Receipt Showing to Whom & Date Delivered	
Return Receipt Showing to Whom, Date, & Addressee's Address	
TOTAL Postage & Fees	\$
Postmark or Date	

P 622 713 450

US Postal Service
Receipt for Certified Mail

Felix Briones Jr.
333 East Main
Farmington, NM 87401

Postage	\$
Certified Fee	
Special Delivery Fee	
Restricted Delivery Fee	
Return Receipt Showing to Whom & Date Delivered	
Return Receipt Showing to Whom, Date, & Addressee's Address	
TOTAL Postage & Fees	\$
Postmark or Date	APR 12 1995 FARMINGTON NM

P 622 713 451

US Postal Service

Receipt for Certified Mail

Frank Briones
333 East Main
Farmington, NM 87401

Postage	\$
Certified Fee	
Special Delivery Fee	
Restricted Delivery Fee	
Return Receipt Showing to Whom & Date Delivered	
Return Receipt Showing to Whom, Date, & Addressee's Address	
TOTAL Postage & Fees	\$
Postmark or Date	

Form 3800, April 1995

P 622 713 452

US Postal Service

Receipt for Certified Mail

Debra Hill
PO Box 329
Roswell, NM 88202

Postage	\$
Certified Fee	
Special Delivery Fee	
Restricted Delivery Fee	
Return Receipt Showing to Whom & Date Delivered	
Return Receipt Showing to Whom, Date, & Addressee's Address	
TOTAL Postage & Fees	\$
Postmark or Date	

PS Form 3800, April 1995

P 622 713 453

US Postal Service

Receipt for Certified Mail

Hugh Hanagan
Betty Hanagan
PO Box 329
Roswell, NM 88202

Postage	\$
Certified Fee	
Special Delivery Fee	
Restricted Delivery Fee	
Return Receipt Showing to Whom & Date Delivered	
Return Receipt Showing to Whom, Date, & Addressee's Address	
TOTAL Postage & Fees	\$
Postmark or Date	

PS Form 3800, April 1995

P 622 713 454

US Postal Service

Receipt for Certified Mail

Alice Eubank
2007 Gwenda Drive
Carlsbad, NM 88220

Postage	\$
Certified Fee	
Special Delivery Fee	
Restricted Delivery Fee	
Return Receipt Showing to Whom & Date Delivered	
Return Receipt Showing to Whom, Date, & Addressee's Address	
TOTAL Postage & Fees	\$
Postmark or Date	

PS Form 3800, April 1995

HOBBS NM
APR 12 1995
USPS

P 622 713 455

US Postal Service

Receipt for Certified Mail

T.T. Sanders Jr.
PO Box 550
Roswell, NM 88202

Postage	\$
Certified Fee	
Special Delivery Fee	
Restricted Delivery Fee	
Return Receipt Showing to Whom & Date Delivered	
Return Receipt Showing to Whom, Date, & Addressee's Address	
TOTAL Postage & Fees	\$
Postmark or Date	

PS Form 3800, April 1995

HOBBS NM
APR 12 1995
USPS

P 622 713 456

US Postal Service

Receipt for Certified Mail

Charles James
1207 West Riverside
Carlsbad, NM 88220

Postage	\$
Certified Fee	
Special Delivery Fee	
Restricted Delivery Fee	
Return Receipt Showing to Whom & Date Delivered	
Return Receipt Showing to Whom, Date, & Addressee's Address	
TOTAL Postage & Fees	\$
Postmark or Date	

PS Form 3800, April 1995

HOBBS NM
APR 12 1995
USPS

P 622 713 457

US Postal Service
Receipt for Certified Mail

Richard Kaucher
15705 Sierra
Houston, TX 77040

P 622 713 458

US Postal Service
Receipt for Certified Mail

James Kaucher
727 Park Wind Drive
Katy, Texas 77450

P 622 713 459

US Postal Service
Receipt for Certified Mail

Robert James
PO Box 855
Carlsbad, NM 88221

Postage	\$
Certified Fee	
Special Delivery Fee	
Restricted Delivery Fee	
Return Receipt Showing to Whom & Date Delivered	
Return Receipt Showing to Whom, Date, & Addressee's Address	
TOTAL Postage & Fees	\$ 8.24
Postmark or Date	APR 16 1995 HOBBBS

Postage	\$
Certified Fee	
Special Delivery Fee	
Restricted Delivery Fee	
Return Receipt Showing to Whom & Date Delivered	
Return Receipt Showing to Whom, Date, & Addressee's Address	
TOTAL Postage & Fees	\$
Postmark or Date	APR 16 1995

Postage	\$
Certified Fee	
Special Delivery Fee	
Restricted Delivery Fee	
Return Receipt Showing to Whom & Date Delivered	
Return Receipt Showing to Whom, Date, & Addressee's Address	
TOTAL Postage & Fees	
Postmark or Date	APR 16 1995

P 622 713 460

US Postal Service
Receipt for Certified Mail

Kathleen George
2004 SW Brighton PL
Blue Springs, MO 64015

Postage	\$
Certified Fee	
Special Delivery Fee	
Restricted Delivery Fee	
Return Receipt Showing to Whom & Date Delivered	
Return Receipt Showing to Whom, Date, & Addressee's Address	
TOTAL Postage & Fees	\$
Postmark or Date	

PS Form 3800, April 1995

P 622 713 461

US Postal Service
Receipt for Certified Mail

Robert Kaucher
3425 Foxridge Dr.
Colorado Springs, CO 80916

Postage	\$
Certified Fee	
Special Delivery Fee	
Restricted Delivery Fee	
Return Receipt Showing to Whom & Date Delivered	
Return Receipt Showing to Whom, Date, & Addressee's Address	
TOTAL Postage & Fees	\$
Postmark or Date	

PS Form 3800, April 1995

P 622 713 462

US Postal Service
Receipt for Certified Mail

Dianne Mary Truitt
15006 Falling Creek Dr.
Houston, TX 77068

Postage	\$
Certified Fee	
Special Delivery Fee	
Restricted Delivery Fee	
Return Receipt Showing to Whom & Date Delivered	
Return Receipt Showing to Whom, Date, & Addressee's Address	
TOTAL Postage & Fees	\$
Postmark or Date	

PS Form 3800, April 1995

P 622 713 463

US Postal Service

Receipt for Certified Mail

Ross E. Broderick
3106 East 87th Street
Kansas City, KS 64132

Postage	\$
Certified Fee	
Special Delivery Fee	
Restricted Delivery Fee	
Return Receipt Showing to Whom & Date Delivered	
Return Receipt Showing to Whom, Date, & Addressee's Address	
TOTAL Postage & Fees	\$ 2.40
Postmark or Date	

PS Form 3800, April 1995

P 622 713 464

US Postal Service

Receipt for Certified Mail

Christopher A. Broderick
2204 NE Chipman Road
Lees, Summit, MO 64063

Postage	\$
Certified Fee	
Special Delivery Fee	
Restricted Delivery Fee	
Return Receipt Showing to Whom & Date Delivered	
Return Receipt Showing to Whom, Date, & Addressee's Address	
TOTAL Postage & Fees	\$
Postmark or Date	

PS Form 3800, April 1995

P 622 713 465

US Postal Service

Receipt for Certified Mail

Michael R. Broderick
701 NW Station Dr.
Lees Summit, MO 64063

Postage	\$
Certified Fee	
Special Delivery Fee	
Restricted Delivery Fee	
Return Receipt Showing to Whom & Date Delivered	
Return Receipt Showing to Whom, Date, & Addressee's Address	
TOTAL Postage & Fees	\$ 2.40
Postmark or Date	

PS Form 3800, April 1995

P 622 713 466

US Postal Service

Receipt for Certified Mail

Keystone, Inc.
Attn: J. Smitherman
6 Desta Dr, Ste 3700
Midland, TX 79702

Postage	\$
Certified Fee	
Special Delivery Fee	
Restricted Delivery Fee	
Return Receipt Showing to Whom & Date Delivered	
Return Receipt Showing to Whom, Date, & Addressee's Address	
TOTAL Postage & Fees	\$ 8.00
Postmark or Date	APR 1995

PS Form 3800, April 1995

P 622 713 467

US Postal Service

Receipt for Certified Mail

Thru Line, Inc.
Attn: J. Smitherman
6 Desta Dr, Ste 3700
Midland, TX 79702

Postage	\$
Certified Fee	
Special Delivery Fee	
Restricted Delivery Fee	
Return Receipt Showing to Whom & Date Delivered	
Return Receipt Showing to Whom, Date, & Addressee's Address	
TOTAL Postage & Fees	\$
Postmark or Date	

PS Form 3800, April 1995

P 622 713 468

US Postal Service

Receipt for Certified Mail

Perry R. Bass, Trustee
Attn: J. Smitherman
6 Desta Dr, Ste 3700
Midland, TX 79702

Postage	\$
Certified Fee	
Special Delivery Fee	
Restricted Delivery Fee	
Return Receipt Showing to Whom & Date Delivered	
Return Receipt Showing to Whom, Date, & Addressee's Address	
TOTAL Postage & Fees	\$ 8.00
Postmark or Date	APR 1995

PS Form 3800, April 1995

P 622 713 469

US Postal Service
Receipt for Certified Mail

Sid R. Bass, Inc.
Attn: J. Smitherman
6 Desta Dr, Ste 3700
Midland, TX 79702

Postage	\$
Certified Fee	
Special Delivery Fee	
Restricted Delivery Fee	
Return Receipt Showing to Whom & Date Delivered	
Return Receipt Showing to Whom, Date, & Addressee's Address	
TOTAL Postage & Fees	
Postmark for Date	

PS Form 3800, April 1995

HOBBBS
APR 18 1996
USPS

P 622 713 470

US Postal Service
Receipt for Certified Mail

Lee M. Bass, Inc.
Attn: J. Smitherman
6 Desta Dr, Ste 3700
Midland, TX 79702

Postage	\$
Certified Fee	
Special Delivery Fee	
Restricted Delivery Fee	
Return Receipt Showing to Whom & Date Delivered	
Return Receipt Showing to Whom, Date, & Addressee's Address	
TOTAL Postage & Fees	
Postmark for Date	

PS Form 3800, April 1995

HOBBBS
APR 18 1996
USPS