

PLC

3/27/00
166



Chevron

February 29, 2000

Chevron U.S.A. Production Company
P.O. Box 1150
Midland, TX 79702

**Administrative Application for Surface Commingling
Wildcat;Drinkard**

Monument 13 State #17

**1912' FNL & 1732' FWL, Unit F, Sec. 13, T19S, R36E
13 State #27**

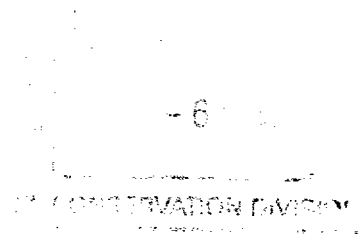
**785' FNL & 1980' FEL, Unit B, Sec. 13, T19S, R36E
Monument 12 State #10**

677' FSL & 791' FWL, Unit M, Sec. 12, T19S, R36E

Monument 13 State #29

1650' FSL & 990' FWL, Unit L, Sec. 13, T19S, R36E

Lea County, New Mexico



State of New Mexico
Energy, Minerals & Natural Resources Department
Oil Conservation Division
2040 South Pacheco
Santa Fe, New Mexico 87505

Attention: Mr. William J. LeMay - Director

Dear Mr. LeMay:

Chevron U.S.A., Inc. respectfully requests administrative approval for surface commingling of the production of the above described wells.

Monument 13 State #17 has been recompleted in Wildcat; Drinkard. Initial potential was 3 BOPD, 2200 MCFPD, 0 BWPD. 13 State #27 was initially drilled in Wildcat; Drinkard. Initial potential was 17 BOPD, 23 MCFPD, 216 BWPD. Monument 12 State #10 has been recompleted in Wildcat; Drinkard. Initial potential was 1 BOPD, 774 MCFPD, 1 BWPD. Monument 13 State #29 was initially drilled in Wildcat; Drinkard. Initial potential was 6 BOPD, 663 MCFPD, 96 BWPD.

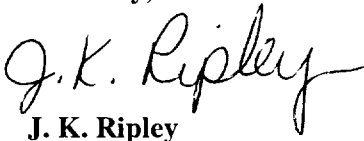
The commingling of these wells will allow producing the wells into one battery at a considerable savings. The oils are from the same zone and will be compatible. The value of the commingled oil will be the same as the individual oils.

Monument;Abo and Monument;Abo, North production is also commingled at the battery location. However, there is a complete and separate Drinkard battery that the captioned wells produce into. Gas is being metered separately for each well since working interest owners are not the same.

~~Monument;Abo~~ ^{Monument;Abo} Location of the battery is F-12-19S-36E, Lea County. A schematic of the battery is attached.

If you have any questions, or if you require further information, please contact Lloyd Trautman at (915) 687-7152

Sincerely,

A handwritten signature in cursive script that reads "J. K. Ripley".

J. K. Ripley

Attachment

cc: NMOCD – Hobbs, NM
NM State Land Office – Santa Fe, NM

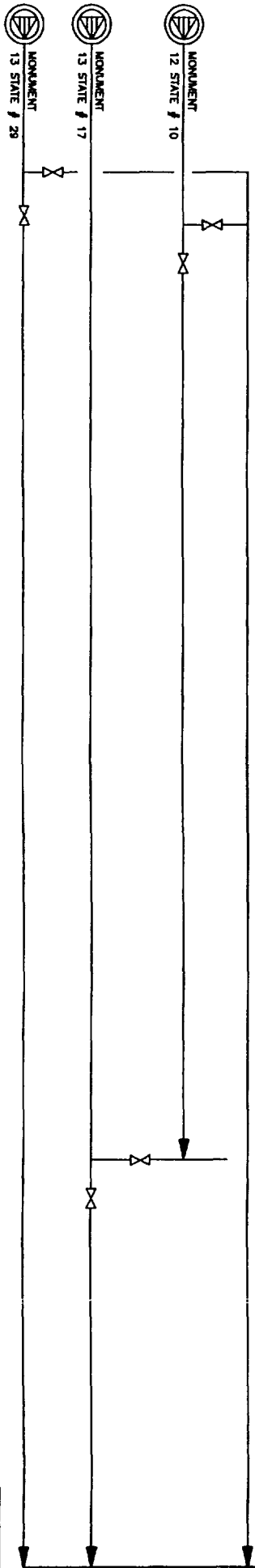
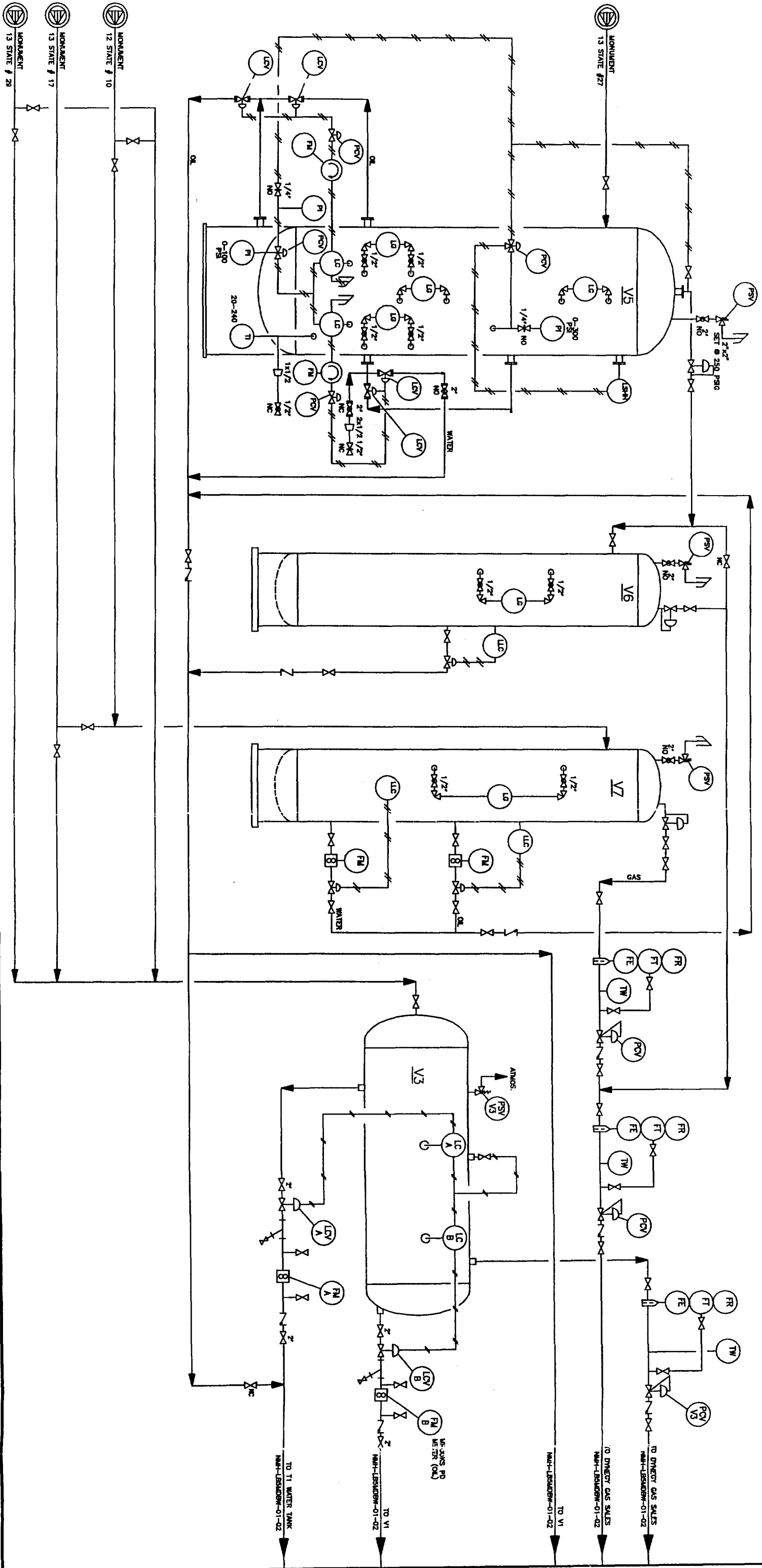


V5 (79A0050579)
METERING SEPARATOR
36" O.D. x 8'-0"
MAWP: 250 PSI @ 7°F
MDMT: 77 @ 250 PSI

V6 (79A0050088)
GAS SCRUBBER
36" O.D. x 10'-0"
MAWP: 125 PSI @ 7°F
MDMT: 77 @ 68 PSI

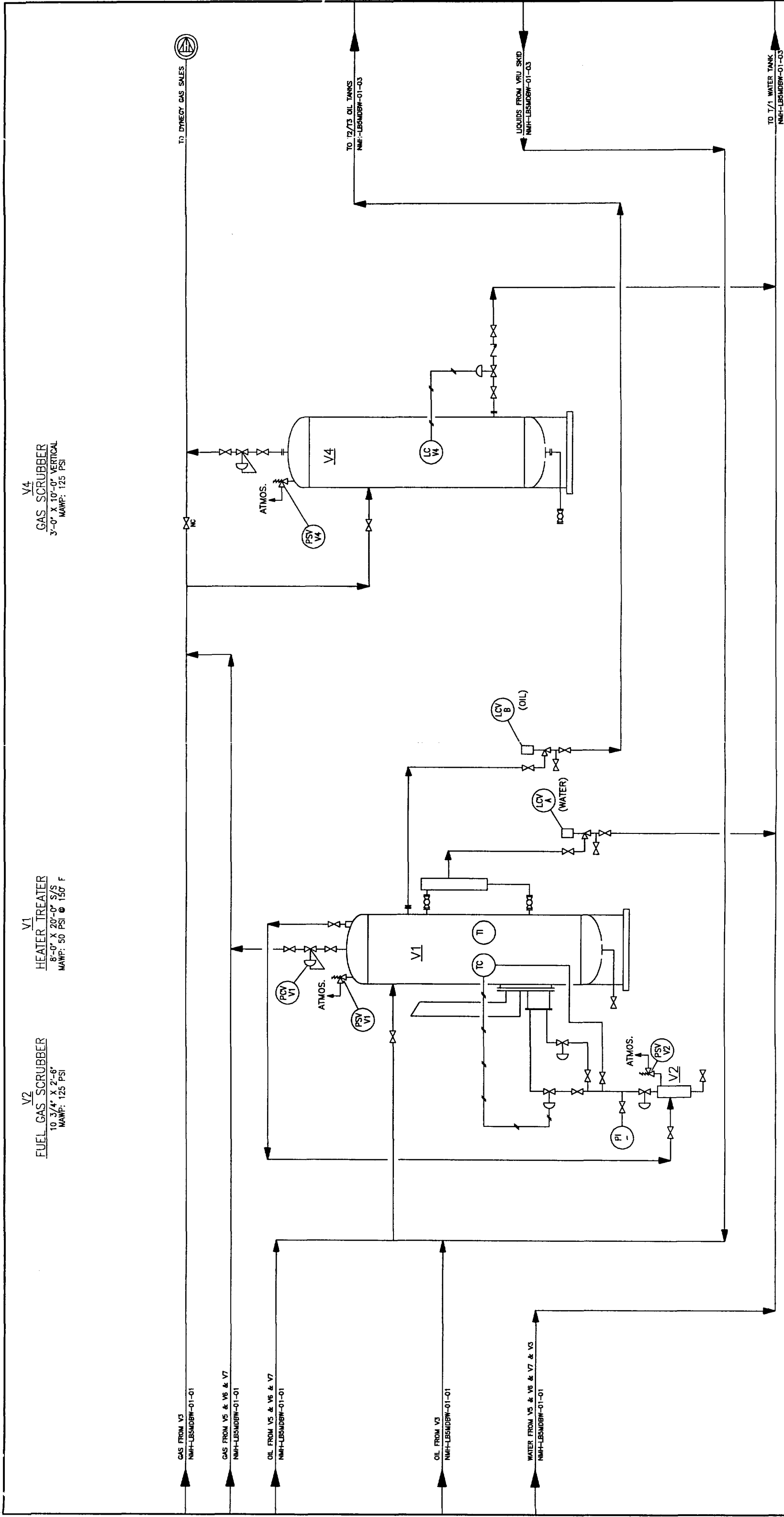
V7(79A0051180)
METERING SEPARATOR
30" O.D. x 10'-0"
MAWP: 125 PSI @ 150°F
MDMT: 150°F @ 125 PSI

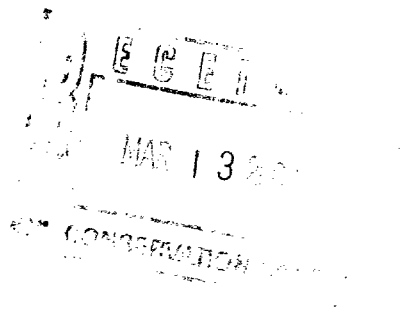
V3
PRODUCTION SEPARATOR
4'-0" O.D. x 15'-0" S/S
MAWP: 125 PSI



REVISIONS			
NO.	DATE	DESCRIPTION	BY
A	11/9/98	ISSUED FOR APPROVAL	TTD
B	1/21/00	MODIFIED AS PER RECORD'S RED LINES	JAA
C	2/2/00	UPDATED Dwg NO. 3 & MODIFIED Dwg AS PER RECORD'S RED LINES	JAA

Chevron U.S.A. Inc.	
Permian Oil & Gas Profit Centers	
NIMHOBS	
WILDCAT DRINKARD FIELD	
NORTH MONUMENT DRINKARD BATTERY	
LESDBW	
P & ID	
Eddy County	
Drawn by: R. HOLZER	
Checked by: TTD	
Scale: NONE	
Sheet: 1 of 3	
Dwg No: LESDBW-01-01	

[illegible]



March 9, 2000

Chevron U.S.A. Production Company
P.O. Box 1150
Midland, TX 79702

Administrative Application for Surface Commingling
Wildcat;Drinkard
Monument 13 State #17
1912' FNL & 1732' FWL, Unit F, Sec. 13, T19S, R36E
13 State #27
785' FNL & 1980' FEL, Unit B, Sec. 13, T19S, R36E
Monument 12 State #10
677' FSL & 791' FWL, Unit M, Sec. 12, T19S, R36E
Monument 13 State #29
1650' FSL & 990' FWL, Unit L, Sec. 13, T19S, R36E
Lea County, New Mexico

State of New Mexico
Energy, Minerals & Natural Resources Department
Oil Conservation Division
2040 South Pacheco
Santa Fe, New Mexico 87505

Attention: Lori Wrotenberry - Director

Dear Ms. Wrotenberry:

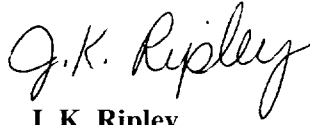
Mark Ashley contacted Lloyd Trautman on March 8, 2000, requesting additional information relating to this commingle request. The following is in response to that request.

Working Interest Owners for Monument 13 State #29, Monument 13 State #17 and Monument 12 State #10 are Chevron, Amerada Hess Corporation, Leede Operating Company and Phillips Petroleum Company. Working Interest Owners for 13 State #27 are Chevron and Texaco. Lloyd Trautman verbally discussed the surface commingling with each Working Interest Owner. None of the Working Interest Owners had an objection.

I am also attaching a map showing the location of the captioned wells.

If you have any questions, or if you require further information, please contact Lloyd Trautman at (915) 687-7152

Sincerely,

A handwritten signature in black ink that reads "J. K. Ripley". The signature is written in a cursive style with a large, stylized "R" and a long, sweeping underline.

J. K. Ripley

Attachment

cc: NMOCD – Hobbs, NM

2

1

• 26

• 15

• 20

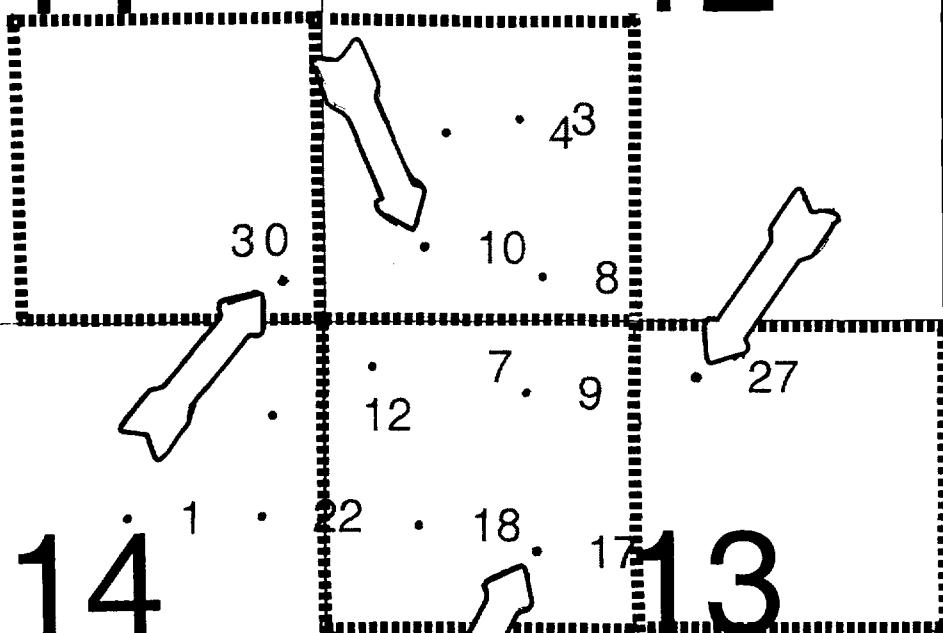
• 25

• 14

11

• 16 •

12



14

13

-R036E

• 5 • 6

22

24

COMMISSIONER'S OFFICE

Phone (505) 827-5760

Fax (505) 827-5766

ADMINISTRATION

Phone (505) 827-5700

Fax (505) 827-5853

GENERAL COUNSEL

Phone (505) 827-5713

Fax (505) 827-4262

PUBLIC AFFAIRS

Phone (505) 827-5765

Fax (505) 827-5766



**New Mexico State Land Office
Commissioner of Public Lands
Ray Powell, M.S., D.V.M.**

COMMERCIAL RESOURCES

Phone (505) 827-5724

Fax (505) 827-6157

MINERAL RESOURCES

Phone (505) 827-5744

Fax (505) 827-4739

ROYALTY MANAGEMENT

Phone (505) 827-5772

Fax (505) 827-4739

SURFACE RESOURCES

Phone (505) 827-5793

Fax (505) 827-5711

April 11, 2000

Chevron U.S.A. Production Company
P. O. Box 1150
Midland, Texas 79702

Attn: Ms. J. K. Ripley

Re: Surface Commingling Application
Wildcat; Drinkard
Monument 13 State # 17-F Sec. 13-19S-36E (E-7355-1)
Monument 13 State # 27-B Sec. 13-19S-36E (B-1327-1)
Monument 12 State # 10-M Sec. 12-19S-36E (B-1023-0)
Monument 13 State # 29-L Sec. 13-19S-36E (B-10230-0)
Monument Drinkard Tank Battery (F) Sec. 12-19S-36E
Lea County, New Mexico

Dear Ms. Ripley:

We are in receipt of your letter of February 29, 2000. Your letter requests our approval to surface commingle the production from the above captioned wells at the Monument Drinkard Tank battery facility located in the SE/4NW/4 of Section 12, Township 19 South, Range 36 East.

It is our understanding that the production will be allocated to each lease by separately metering the production from each lease prior to commingling.

Since it appears that all the New Mexico Oil Conservation Division's rules and regulations have been complied with, and there will be no loss of revenue to the State of New Mexico as a result of your proposed operation, your request is hereby approved. Our approval is subject to like approval by the New Mexico Oil Conservation Division.

Please contact Ms. Debbie Padilla of our Right-of-Way Division at (505) 827-5729 for a right-of-way through Section 12, Township 19 South, Range 36 East. Our approval is contingent upon you acquiring the appropriate easements.

Your \$30.00 dollar filing fee has been received.

Chevron U.S.A. Production Company
April 11, 2000
Page 2

If you have any questions or if we may be of further help, please contact Pete Martinez at (505) 827-5791.

Very truly yours,

RAY POWELL, M.S., D.V.M.
COMMISSIONER OF PUBLIC LANDS

BY: 

JAMI BAILEY, Director
Oil, Gas and Minerals Division
(505) 827-5744

RP/JB/pm

pc: Reader File

~~CCB Attention: David Catafano~~, Ben Stone,
Debbie Padilla

FOC