

GRARIDGE CORPORATION

MONTHLY WATER FLOOD REPORT

Page 11.

Injection Well Data

Project: Cap Unit

Month: January, 1960

Lease & Well No.	Total Water Input		Injection Pressure	Cumulative Input
	Month	Avg./Day		
Cap Unit 5-4	4,875	157	990	407,834
5-12	3,111	100	960	64,879
6-2	4,605	149	1,040	448,726
6-4	5,796	187	1,100	105,093
6-6	3,929	136	1,030	83,327
6-8	11,128	384	850	278,228
* 6-10	2,684	87	1,100	37,365
* 6-12	16,101	537	900	202,450
* 6-14	16,100	537	450	162,311
* 6-16	4,173	135	1,080	48,999
* 7-2	7,543	244	1,100	67,522
* 7-6	3,994	129	1,100	37,999
* 7-14	20,306	677	880	95,878
30-16	14,528	469	650	112,476
31-2	7,003	412	720	211,217
31-8	13,797	445	700	241,905
31-10	11,510	372	50	421,694
31-12	14,487	467	550	218,226
31-14	4,554	147	1,100	120,828
31-16	12,787	426	640	478,522

* These wells supplied from South Plant

Exhibit 2

G R A R I D G E C O R P O R A T I O N

MONTHLY WATER FLOOD REPORT

Page 11.

Injection Well Data

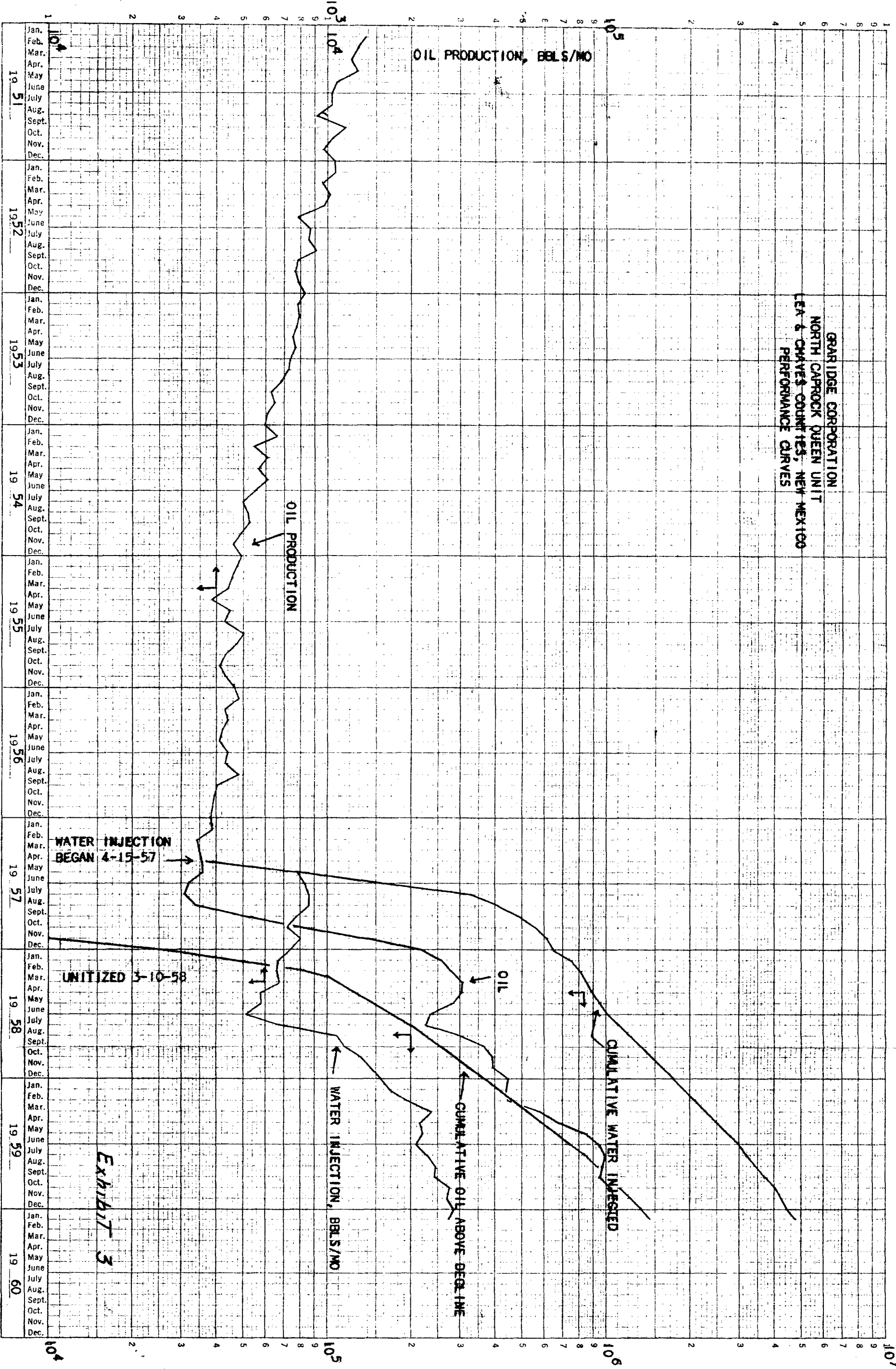
(2)

Project: Cap Unit

Month: January, 1960

[illegible]

WATER INJECTED, BBLS/MO



CUMULATIVE OIL ABOVE DECLINE AND CUMULATIVE WATER INJECTED, BBLS

GRARIDGE CORPORATION

IBEX BUILDING

POST OFFICE BOX 732

BRECKENRIDGE, TEXAS

February 13, 1960

Oil Conservation Commission
State of New Mexico
State Capitol Building
Santa Fe, New Mexico

ATTENTION: Mr. Dan Nutter

Gentlemen:

Attached please find letters from offset operators indicating that they have no objections to the expansion of North Caprock Queen Unit No. 1 by conversion of Well Nos. 7-8 (SE/4, NE/4 Sec. 7, 13S, 32E) and 8-4 (NW/4, NW/4, Sec. 8, 13S, 32E) to water injection wells.

These waivers should give us relief from the fifteen-day waiting period. We would appreciate any effort on the part of the Commission in expediting this application.

Very truly yours,

GRARIDGE CORPORATION



B. G. Harrison

Manager of Secondary Recovery

BGH:gl

cc: Oil Conservation Commission, Hobbs

Graham Office

GRARIDGE CORPORATION
IBEX BUILDING POST OFFICE BOX 752
BRECKENRIDGE, TEXAS

February 9, 1960

Date Received FEB 11 1960			
ROUTE TO		ROUTE TO	
	DATE CHECKED		DATE CHECKED
LC			
OHR		CRA	
TAF		U. C.	
FFD		BGE	
WFB		WEW	
BGH ✓	2-11	JWC	
Mail To:		FILE:	
Graham		WR	

Great Western Drilling Company
P. O. Box 1659
Midland, Texas

ATTENTION: Mr. M. B. Wilson

Gentlemen:

It is the desire of Graridge Corporation to expand the water injection program in the North Caprock Queen Unit No. 1 Flood in Lea and Chaves Counties, New Mexico. The expansion is to include the following wells.

WELL NO.	LOCATION
7-8	SE/4, NE/4, Sec.7, 13S, 32E
8-4	NW/4, NW/4, Sec.8, 13S, 32E

A fifteen-day waiting period is set up by the Commission unless waivers are obtained from all offset operators offsetting the proposed expansion.

In order to expedite matters, please sign and return one copy of this letter to this office if your company has no objection to the proposed expansion.

Yours very truly,

GRARIDGE CORPORATION

B. G. Harrison
B. G. Harrison
Manager of Secondary Recovery

Signed By: *John J. Hampton*

For: Great Western Drilling Company

SHL:BGH:gl

GRARIDGE CORPORATION

IBEX BUILDING

POST OFFICE BOX 752

BRECKENRIDGE, TEXAS

February 9, 1960

Ambassador Oil Corporation
P. O. Box 9338
Fort Worth 7, Texas

ATTENTION: Mr. R. H. Vick

Gentlemen:

It is the desire of Graridge Corporation to expand the water injection program in the North Caprock Queen Unit No. 1 Flood in Lea and Chaves Counties, New Mexico. The expansion is to include the following wells.

<u>WELL NO.</u>	<u>LOCATION</u>
7-8	SE/4, NE/4, Sec.7, 13S, 32E
8-4	NW/4, NW/4, Sec.8, 13S, 32E

A fifteen-day waiting period is set up by the Commission unless waivers are obtained from all offset operators offsetting the proposed expansion.

In order to expedite matters, please sign and return one copy of this letter to this office if your company has no objection to the proposed expansion.

Yours very truly,

GRARIDGE CORPORATION

B. G. Harrison

B. G. Harrison

Manager of Secondary Recovery

Signed By:

Robert H. Vick

For:

Ambassador Oil Corp.

SHL:BGH:gl

GRARIDGE CORPORATION
1875 BUILDING
POST OFFICE BOX 122
BRECKINRIDGE TEXAS

1911

1911

1911

1911

1911

1911

1911

1911

1911

1911

1911

1911

1911

1911



STATE OF NEW MEXICO

STATE ENGINEER OFFICE

SANTA FE

February 23, 1960

S. E. REYNOLDS
STATE ENGINEER

ADDRESS CORRESPONDENCE TO:
P. O. BOX 1079
SANTA FE, N. M.

Mr. A. L. Porter, Jr.
Secretary-Director
Oil Conservation Commission
Santa Fe, New Mexico

Dear Mr. Porter:

Reference is made to the application of Graridge Corp. dated February 8, 1960 pertaining to the conversion of Wells No. 7-8 and 8-4 in the North Caprock Queen Unit No. 1.

Item 4 of this letter requests the State Engineer to waive his requirement of placing tubing and packer in these injection wells as only fresh water will be injected into them.

On the basis that only fresh water will be injected into these wells 7-8 and 8-4 this office waives the requirement of placing tubing and packer in said wells and has no objection to the granting of the subject application of Graridge Corporation.

Very truly yours,

S. E. Reynolds
State Engineer

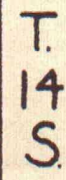
By:

D. E. Gray
D. E. Gray, Engineer
Water Rights Division

DEG/bv

cc: B. G. Harrison
Fred H. Hennighausen

T.
13
S.



0 $\frac{1}{4}$ $\frac{1}{2}$ $\frac{3}{4}$ 1

scale in miles