

GRARIDGE CORPORATION

IBEX BUILDING

POST OFFICE BOX 752

BRECKENRIDGE, TEXAS

February 24, 1960

30
W. F. Y. -
T. F. Y. -
W. F. Y. -

Oil Conservation Commission
State of New Mexico
State Capitol Building
Santa Fe, New Mexico

Re: Application For Administrative
Approval To Convert Two Wells
To Water Injection Wells In
Artesia Flood No. 3, Eddy
County, New Mexico

Gentlemen:

In accordance with Commission Order No. R-966-E Graridge Corporation respectively request administrative approval to convert the following wells to water injection wells.

<u>LEASE</u>	<u>WELL NO.</u>	<u>LOCATION</u>
Resler Yates State	341	990' FSL & 1650' FWL, Sec. 29, 18S, 28E
Resler Yates State	349	330' FSL & 2310' FWL, Sec. 29, 18S, 28E

The following data pertinent to the proposed expansion are given.

(1) The proposed injection wells are directly offset by a producer which when completed in July, 1959, produced 33 barrels of oil and 76 barrels of water per day from a reservoir that had been depleted prior to the water injection program. The depletion of the reservoir was evident as the producing wells near the pilot flood were producing from 1 to 2 barrels of oil and no water per day prior to starting waterflood operations. See attached Exhibit No. 1 for location of Resler Yates State Wells No. 3, 9, 65, and 66. This high initial production from Resler Yates State Well No. 348 is contributed to the water injection program. See attached Form C-116 and Exhibit No. 1.

(2) Exhibit No. 1 indicates all injection wells in the Artesia No. 3 Flood.

(3) Exhibit No. 2 indicates present injection well data. It is evident that some of the injection wells are not as receptive to water injection as others, thus, it is desirable to place wells

February 24, 1960

on injection as early as responses warrant in order to maintain balance.

(4) Exhibit No. 3 gives performance curves for the overall water flood project.

The subject wells have been completed in the following manner.

Resler Yates State No. 349 was drilled to a total depth of 2041'; 4½" 9.5# casing was set at 2040' and cemented with 150 sacks; 7" surface casing was set at 541' and cemented with 150 sacks. The first Grayburg formation will be perforated and water injection will be down 2 3/8" tubing with a tension type packer set at 2,000' upon approval from the Oil Conservation Commission.

Resler Yates State No. 341 is in the process of being drilled and will be completed with 7" casing set at 540' and cemented with 150 sacks. 4½" 9.5# casing will be set at approximately 2050' and cemented with 150 sacks. The first Grayburg formation will be perforated and water injection will be down 2 3/8" tubing with a tension type packer set at approximately 2000' upon approval from the Oil Conservation Commission.

Any consideration by the Commission in expediting this matter will be greatly appreciated.

Yours very truly,

GRARIDGE CORPORATION



B. G. Harrison
Manager of Secondary Recovery

SHL:BGH:gl

Attachments

cc: Oil Conservation Commission, Artesia
Graham Office
Mr. Cliff Chapman
Mr. Paul Darnell

NEW MEXICO OIL CONSERVATION COMMISSION

GAS-OIL RATIO REPORT

OPERATOR Graridge Corporation POOL Artesia
ADDRESS Box 752, Breckenridge, Texas MONTH OF February, 19 60
SCHEDULED TEST X COMPLETION TEST _____ SPECIAL TEST _____ (Check One)
(See Instructions on Reverse Side)

Lease	Well No.	Date of Test	Producing Method	Choke Size	Test Hours	Daily Allowable Bbls.	Production During Test			GOR Cu. Ft. Per Bbl.
							Water Bbls.	Oil Bbls.	Gas MCF	
Resler Yates St.	348	12-16	Pump	--	24	35	19.9	18.7	TSTM	TSTM
Resler Yates St.	348	1-13	Pump	--	24	35	0	22.4	TSTM	TSTM

No well will be assigned an allowable greater than the amount of oil produced on the official test.

During gas-oil ratio test, each well shall be produced at a rate not exceeding the top unit allowable for the pool in which well is located by more than 25 percent. Operator is encouraged to take advantage of this 25 percent tolerance in order that well can be assigned increased allowables when authorized by the Commission.

Gas volumes must be reported in MCF measured at a pressure base of 15.025 psia and a temperature of 60 degrees F. Specific gravity base will be 0.60.

Mail original and one copy of this report to the district office of the New Mexico Oil Conservation Commission. In accordance with Rule 301 and Appropriate Pool Rules.

(I certify that the information given is true and complete to the best of my knowledge.)

Date February 24, 1960

Graridge Corporation

By S. H. Lindley, Jr. S. H. Lindley, Jr.
Engineer
Title

GRARIDGE CORPORATION

MONTHLY WATER FLOOD REPORT

Page 11.

Injection Well Data

Project: Artesia Pilot Flood No.3

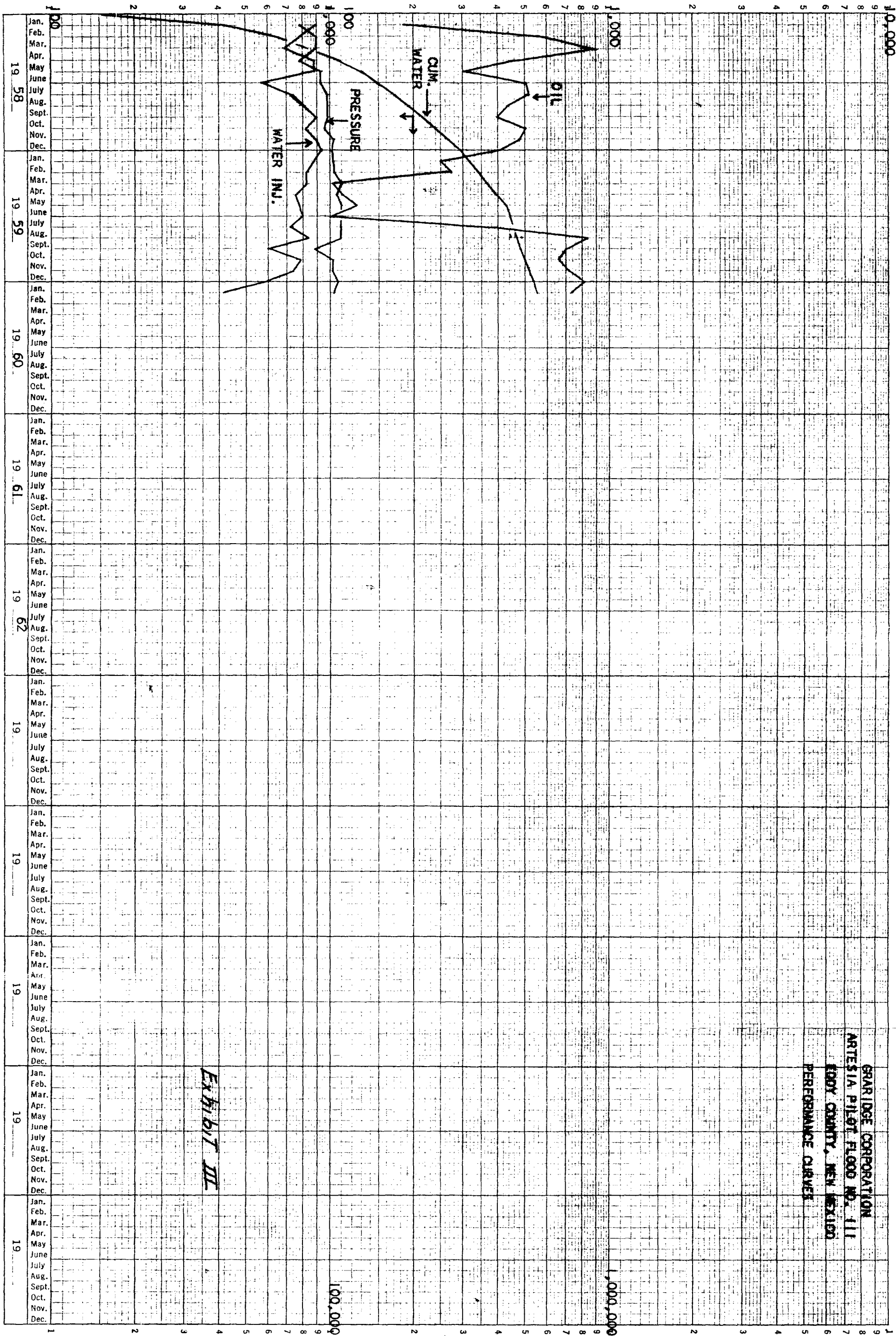
Month: January, 1960

[illegible]

WATER INJECTION, BBL/DAY

INJECTION PRESSURE, PSIG.

OIL PRODUCTION, BBL/D.



GRARIDGE CORPORATION
ARTESIA PILOT FLOOD NO. 111
KOBY COUNTY, NEW MEXICO
PERFORMANCE CURVES

EXHIBIT III

CUMULATIVE WATER INJECTED, BBL.

LARGE FORMAT
EXHIBIT HAS
BEEN REMOVED
AND IS LOCATED
IN THE NEXT FILE



STATE OF NEW MEXICO

STATE ENGINEER OFFICE

SANTA FE

S. E. REYNOLDS
STATE ENGINEER

March 24, 1960

ADDRESS CORRESPONDENCE TO:
P. O. BOX 1079
SANTA FE, N. M.

Mr. A. L. Porter, Jr.
Secretary-Director
Oil Conservation Commission
Santa Fe, New Mexico

Dear Mr. Porter:

Reference is made to Graridge Corporation's application for administrative approval to convert two wells to water injection wells in Artesia Flood No. 3, Eddy County, New Mexico which was dated February 24, 1960.

The specific wells referred to in this application are Resler Yates State 341 and Resler Yates State 349. After studying the application and the supporting exhibits, I have reached the conclusion that the conversion of these two wells will not constitute a threat of contamination to the underground waters which may exist in this area. Therefore, this office offers no objection to the granting of this application.

Yours truly,

S. E. Reynolds
State Engineer

FEI/ma
cc-F. H. Hennighausen
Graridge Corp.

By: *Frank E. Irby*
Frank E. Irby
Chief
Water Rights Div.

LARGE FORMAT
EXHIBIT HAS
BEEN REMOVED
AND IS LOCATED
IN THE NEXT FILE