

*Ola -
for in, make
file and
on waiting for
WFX. due Aug 7*

GRARIDGE CORPORATION
OFFICE BUILDING POST OFFICE BOX 752
BRECKENRIDGE, TEXAS

RECEIVED OFFICE CCC
JUL 12 1960

July 19, 1960

WFX-44

Oil Conservation Commission
State of New Mexico
State Capitol Building
Santa Fe, New Mexico

Re: Application for Administrative
Approval to Convert One Well
To Water Injection Well in
Artesia Flood No. 2
Eddy County, New Mexico

Gentlemen:

In accordance with Commission Order No. R-966-E, Graridge respectively requests administrative approval to convert the following well to a water injection well.

<u>LEASE</u>	<u>WELL NO.</u>	<u>LOCATION</u>
Resler Yates State	30	Unit 1, Section 21, T18S, R28E

The following data pertinent to the proposed expansion are given.

- (1) The proposed injection well is directly offset by a producing well which has shown response to the waterflood project. See attached Form C-116 and Exhibit No. 1.
- (2) Exhibit No. 1 indicates all offset operators and injection wells in Artesia Flood No. 2. A copy of this application and a waiver form is being sent to Western Yates as they are the offset operator to the proposed expansion. This waiver will be forwarded to you as soon as it is received.
- (3) Exhibit No. 2 indicates present injection well data. It is evident that some of the injection wells are not as receptive to water injection as others, thus, it is desirable to place wells on injection as early as responses warrant in order to maintain a flood balance.
- (4) Exhibit No. 3 gives performance curves for the overall water-flood project.

GRARIDGE CORPORATION

MONTHLY WATER FLOOD REPORT

Page 11.

Injection Well Data

Project: Artesia Flood No. 2

Month: June, 1960

Lease & Well No.	Total Water Input		Injection Pressure	Cumulative Input
	Month	Avg./Day		
Toomey Allen 3	4,613	159	890	4,613
Lackawanna St. A-1	5,539	198	350	22,548
A-3	4,870	162	1020	36,080
McNutt State 2	4,190	140	995	235,535
5	4,550	152	960	61,229
6	2,683	93	920	98,702
8	5,512	184	955	151,128
11	4,825	161	960	38,301
13	2,073	69	930	18,061
17	6,931	231	940	34,092
Resler Yates St. 13	4,117	137	960	189,505
14	2,679	89	910	12,928
18	3,656	122	990	206,484
22	5,088	175	980	117,767
24	2,955	98	965	32,832
39	2,818	113	970	53,754
51	3,776	130	960	152,617
301	5,130	171	950	67,367
303	3,029	101	520	6,031
304	4,481	149	920	36,839

GRARIDGE CORPORATION

MONTHLY WATER FLOOD REPORT

Page 11.

(2)

Injection Well Data

Project: Artesia Flood No. 2

Month: June, 1960

Lease & Well No.	Total Water Input		Injection Pressure	Cumulative Input
	Month	Avg./Day		
Venture State 52	4,327	167	975	29,509
305	706	177	790	47,638
Welch Duke St. 4	3,609	120	1020	96,910
5	5,264	175	995	225,883
7	5,959	199	940	260,770
10	*----	---	---	112,817
13	4,598	153	1000	27,695
15	5,272	182	1010	69,208
16	4,971	172	720	94,390
19	4,459	149	1030	41,921
20	3,430	181	850	42,926
21	3,322	111	990	46,906
22	5,912	197	895	28,312
Totals (33)	135,344	4,817	886 (avg)	2,701,298

*Welch Duke State #10 shut in since decision was made to squeeze thief zone.

NOTE: Resler Yates State No. 34 deleted from Artesia Flood No. 2 Report as it belongs on report for Artesia Flood No. 3. Total Cumulative injection above does not include cumulative for No. 34.

NEW MEXICO OIL CONSERVATION COMMISSION

GAS-OIL RATIO REPORT

OPERATOR Graridge Corporation POOL Artesia
ADDRESS P O. Box 752, Breckenridge, Texas MONTH OF July, 19 60
SCHEDULED TEST..... COMPLETION TEST..... SPECIAL TEST X..... (Check One)
(See Instructions on Reverse Side)

Lease	Well No.	Date of Test	Producing Method	Choke Size	Test Hours	Daily Allowable Bbls.	Production During Test			GOR Cu. Ft. Per Bbl.
							Water Bbls.	Oil Bbls.	Gas MCF	
<u>BEFORE WATERFLOOD RESPONSE</u>										
Resler Yates St	25	6-8-60	Pump	-	24	1	1.4	4	TSTM	TSTM
<u>AFTER WATERFLOOD RESPONSE</u>										
Resler Yates St	25	7-12-60	Pump	-	24	1	2	20	TSTM	TSTM

No well will be assigned an allowable greater than the amount of oil produced on the official test.

During gas-oil ratio test, each well shall be produced at a rate not exceeding the top unit allowable for the pool in which well is located by more than 25 percent. Operator is encouraged to take advantage of this 25 percent tolerance in order that well can be assigned increased allowables when authorized by the Commission.

Gas volumes must be reported in MCF measured at a pressure base of 15.025 psia and a temperature of 60 degrees F. Specific gravity base will be 0.60.

Mail original and one copy of this report to the district office of the New Mexico Oil Conservation Commission. In accordance with Rule 301 and Appropriate Pool Rules.

(I certify that the information given is true and complete to the best of my knowledge.)

Date July 19, 1960

Graridge Corporation
Company
By S. H. Lindley, Jr.
S. H. Lindley, Jr.
Engineer
Title

July 19, 1960

The subject well has been completed in the following manner.

Abandoned hole was cleaned out to a total depth of 2208'. An electric log was run. 121' of 7" casing was run and connected into 10-3/4" casing, left in the well by previous operator from 121' to 300', with a swedge nipple. The 7" casing was cemented back to the surface with 75 sacks of cement. 4 1/2" 9.5# J-55 casing was set at 2141' and cemented with 150 sacks. The well will be perforated in the first Grayburg section. Before placing the well on injection, a string of 2-3/8" cement lined tubing will be run with a tension type packer set at a depth well below the cement outside the 4 1/2" casing, with injection down the tubing into the first Grayburg.

Any consideration by the Commission in expediting this matter will be greatly appreciated.

Yours very truly,

GRARIDGE CORPORATION



B. G. Harrison
Manager of Secondary Recovery

SHL:BGH:vl

Attachments

cc: Oil Conservation Commission, Artesia
State Engineers Office, Santa Fe
Graham Office
Mr. Cliff Chapman
Mr. Paul Darnell

GRARIDGE CORPORATION
IBEX BUILDING POST OFFICE BOX 752
BRECKENRIDGE TEXAS

August 2, 1960

Oil Conservation Commission
State of New Mexico
State Capitol Building
Santa Fe, New Mexico

Re: Application for Administrative
Approval to Convert Resler
Yates State No. 30 to a
Water Injection Well


Gentlemen:

In my letter to you dated July 19, 1960 in which approval to convert Resler Yates State No. 30 to a water injection well was requested, I mistakenly indicated in the completion procedure that 4½" casing was set through the First Grayburg. The 4½" casing was set at 2141' as reported but was set on top of the First Grayburg so that injection will be through 2-3/8" cement lined tubing into an open hole completion into the First Grayburg. The casing was cemented with 150 sacks as reported.

This letter is merely to clarify the completion procedure.

Yours very truly,

GRARIDGE CORPORATION


B. G. Harrison
Manager of Secondary Recovery

BGH:vl

cc: Oil Conservation Commission
207 Carper Building
Artesia, New Mexico

State Engineer Office
Box 871
Santa Fe, New Mexico

Graham Office
Mr. Cliff Chapman

GRARIDGE CORPORATION

IBEX BUILDING

POST OFFICE BOX 752

BRECKENRIDGE, TEXAS

GRAM OFFICE 000

1960 JUL 2 AM 8 15

July 19, 1960

RECEIVED JUL 22 1960

Western Yates
P. O. Box 427
Artesia, New Mexico

Dear Sirs:

It is the desire of Graridge Corporation to expand the water injection program in the Artesia No. 2 Flood in Eddy County, New Mexico. The expansion is to include the following well.

LEASE AND WELL NO.	LOCATION
Resler Yates State No. 30	Unit 1, Section 21, T18S, R28E

A fifteen day waiting period is set up by the Commission unless waivers are obtained from all offset operators offsetting the proposed expansion.

In order to expedite matters, please sign and return one copy of this letter to this office if you have no objection to the proposed expansion.

Yours very truly,

GRARIDGE CORPORATION

B. G. Harrison

B. G. Harrison
Manager of Secondary Recovery

Signed By: *M. E. Spitzer*

For: Western Development Company - Yates Brothers

SHL:BGH:vl

cc: Graham Office

DATE RECEIVED		JUL 26 1960	
ROUTE TO		ROUTE TO	
	DATE CHECKED		DATE CHECKED
EE		HE	
OH		CRA	
TAF		JLH	
PPD		BGE	
WFB		WEW	
BOH		JWC	
MAIL TO:		FILE:	
Graham		<i>Salmo</i>	

100-10-100

1960 JUL 26 AM 10 37



STATE OF NEW MEXICO

STATE ENGINEER OFFICE

SANTA FE

S. E. REYNOLDS
STATE ENGINEER

July 26, 1960

ADDRESS CORRESPONDENCE TO:

P. O. BOX 1079
SANTA FE, N. M.

Mr. A. L. Porter, Jr.
Secretary-Director
Oil Conservation Commission
Santa Fe, New Mexico

Dear Mr. Porter:

Reference is made to the application of Graridge Corporation seeking administrative approval to convert one well to water injection well in Artesia Flood No. 2, Eddy County, New Mexico. The subject well is Resler Yates State, No. 30, Unit 1, Section 21, Township 18 South, Range 28 East.

In view of the fact that the Graridge Corporation will be injecting through 2 3/8" cement-lined tubing, run with a tension type packer set at a depth well below the cement outside the 4 1/2" casing, I have reached the conclusion that no threat of contamination to the fresh waters in this area will occur in the event the application is granted. Therefore, this office offers no objection to the granting of this application.

Very truly yours,

S. E. Reynolds
State Engineer

By:

Frank E. Irby
Frank E. Irby
Chief

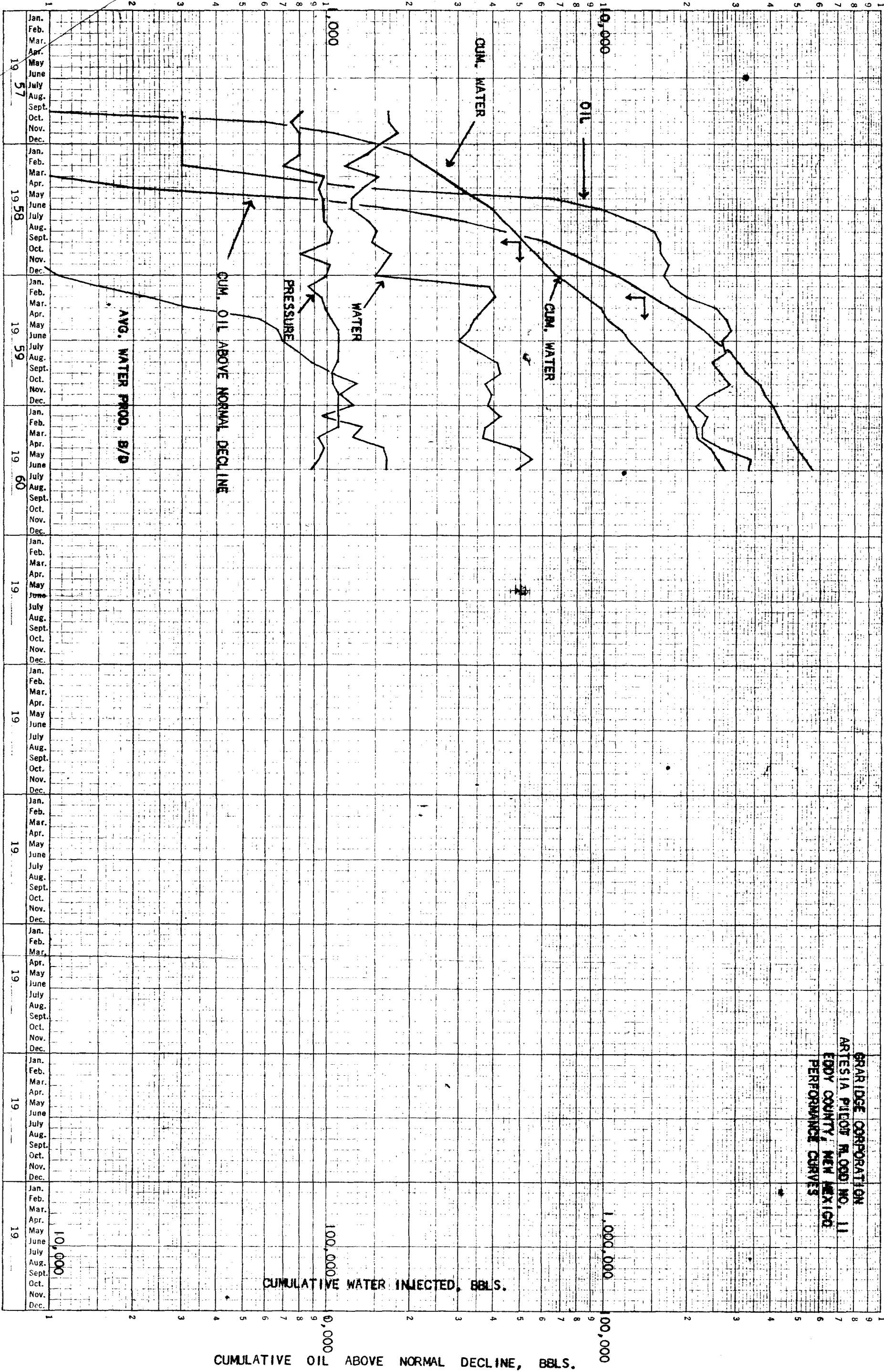
Water Rights Division

FEI/ma
cc-Graridge Corp.
F. H. Hennighausen

INJECTION PRESSURE, PSIG.

WATER INJECTION, BBLS/DAY
AVG. WATER PROD. BBLS/DAY

OIL PRODUCTION, BBLS/MO.



LARGE FORMAT
EXHIBIT HAS
BEEN REMOVED
AND IS LOCATED
IN THE NEXT FILE