

GRARIDGE CORPORATION

IBEX BUILDING

POST OFFICE BOX 752

BRECKENRIDGE, TEXAS

December 16, 1964

RECEIVED
DEC 21 AM 7 57

WFX - 192
Due Jan 5

Oil Conservation Commission
State of New Mexico
State Capitol Building
Santa Fe, New Mexico

Re: Application for Administrative
Approval to Convert One Well to
Water Injection Well in Artesia
Flood No. 3, Eddy County, New
Mexico

Gentlemen:

In accordance with Commission Order No. R-966-E, Granridge Corporation respectively requests administrative approval to convert the following well to a water injection well.

<u>LEASE</u>	<u>WELL NO.</u>	<u>LOCATION</u>
Resler Yates State	368	Unit G, Section 32, T18S, R28E

The following data pertinent to the proposed expansion are given:

(1) The proposed injection well is directly offset by a producing well which has shown response to the waterflood project. See attached Form C-116 and Exhibit No. 1.

(2) Exhibit No. 1 indicates all offset operators and injection wells in Artesia Flood No. 3. A copy of this application and a waiver form is being sent to Kersey and Company, Water Flood Associates, and International Oil and Gas Company as they are the offset operators to the proposed expansion. These waivers will be forwarded to you as soon as they are received.

(3) Exhibit No. 2 indicates present injection well data. It is evident that some of the injection wells are not as receptive to water injection as others, thus, it is desirable to place wells on injection as early as responses warrant in order to maintain a flood balance.

(4) Exhibit No. 3 gives performance curves for the overall waterflood project.

Oil Conservation Commission
December 16, 1964
Page 2

(5) Exhibit No. 4 is diagramatic sketch of the proposed injection well.

(6) Gamma Ray-Sonic and Gamma Ray perforating logs on the subject well are submitted.

(7) Injection water is to be a combination of fresh water furnished by Caprock Water Company and produced water from the First Grayburg. The maximum anticipated injection rate is 250 barrels of water per day.

(8) Resler Yates State No. 368 was completed in the following manner:

9-5/8" hole was drilled to 522'. 7" OD 22# casing was set at 520 and cemented with 150 sacks of cement. 6-1/4" hole was drilled to 2065'. Ran Schlumberger Gamma Ray and Sonic Log. 4-1/2" OD 9.5# casing was set at 2063' with 125 sacks cement. 4-1/2" casing was perforated 2017' to 2029' in the First Grayburg with 2 jet shots per foot. Acidized with 500 gallons 15% Hydro-Chloric NE acid.

Before placing the well on injection, 2-3/8" cement lined tubing will be run with a tension type packer. Packer will be set at approximately 2000', well below the top of the cement outside the 4-1/2" casing. Water will be injected down the cement lined tubing into the First Grayburg.

Any consideration by the Commission in expediting this matter will be greatly appreciated.

Yours very truly,



B. G. Harrison
Manager of Secondary Recovery

GRA/BGH:vw
Attachments

cc: Oil Conservation Commission
P. O. Drawer DD
Artesia, New Mexico

Mr. Frank Irby

NEW MEXICO OIL CONSERVATION COMMISSION

GAS-OIL RATIO REPORT

OPERATOR Graridge Corporation POOL Artesia
ADDRESS Box 752, Breckenridge, Texas MONTH OF December, 19 64
SCHEDULED TEST..... COMPLETION TEST..... SPECIAL TEST X..... (Check One)
(See Instructions on Reverse Side)

Lease	Well No.	Date of Test	Producing Method	Choke Size	Test Hours	Daily Allowable Bbls.	Production During Test			GOR Cu. Ft. Per Bbl.
							Water Bbls.	Oil Bbls.	Gas MCF	
<u>BEFORE WATERFLOOD RESPONSE</u>										
Resler Yates State	55	2/28/64	Pump		24	145	-0-	5.0	TSTM	TSTM
<u>AFTER WATERFLOOD RESPONSE</u>										
Resler Yates State	55	0/19/64	Pump		24	527	0.9	16.4	TSTM	TSTM

No well will be assigned an allowable greater than the amount of oil produced on the official test.

During gas-oil ratio test, each well shall be produced at a rate not exceeding the top unit allowable for the pool in which well is located by more than 25 percent. Operator is encouraged to take advantage of this 25 percent tolerance in order that well can be assigned increased allowables when authorized by the Commission.

Gas volumes must be reported in MCF measured at a pressure base of 15.025 psia and a temperature of 60 degrees F. Specific gravity base will be 0.60.

Mail original and one copy of this report to the district office of the New Mexico Oil Conservation Commission. In accordance with Rule 301 and Appropriate Pool Rules.

(I certify that the information given is true and complete to the best of my knowledge.)

Date December 17, 1964

Graridge Corporation
Company
By B. G. Harrison
B. G. Harrison
Manager of Secondary Recovery
Title

GRARIDGE CORPORATION

MONTHLY WATER FLOOD REPORT

Page 11

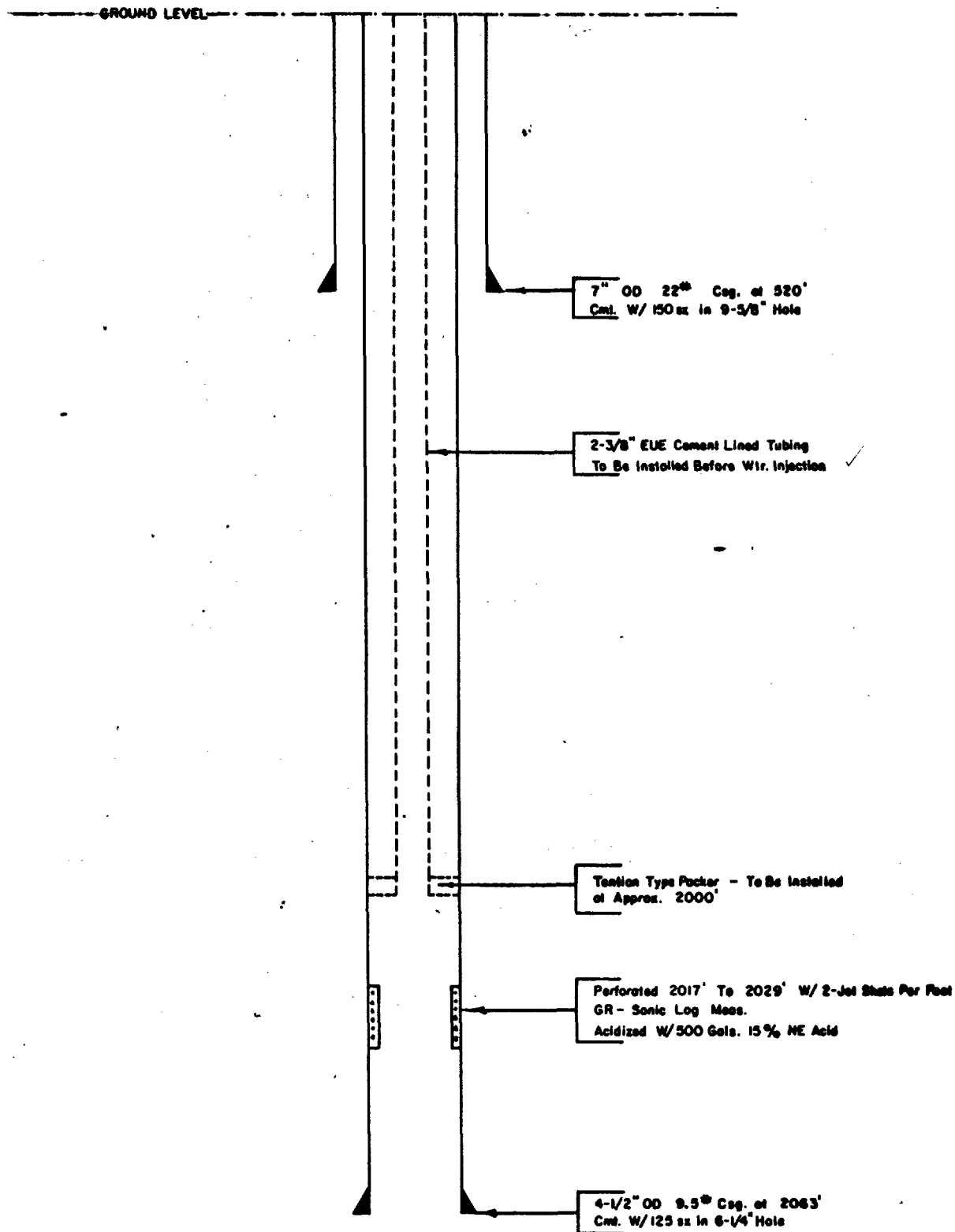
Injection Well Data

Project: Artesia Flood No. 3

Month: November 1964

Lease & Well No.	Total Water Input		Injection Pressure	Cumulative Input
	Month	Avg./Day		
Resler Yates State				
4	6,829	228	1050	475,889
5	Plugged and Abandoned			206,549
6	1,657	55	1100	207,392
7	2,646	88	1100	305,070
34	Plugged and Abandoned			89,659
332	Converted to Producer			139
338	3,889	130	1075	108,473
341	1,452	48	1170	120,500
349	3,538	118	1115	213,233
355	3,036	101	1175	104,264
TOTAL	23,047	768		1,831,158

EXHIBIT NO. 4
GRARIDGE CORP.
Resler-Yates-State
NO. 368





STATE OF NEW MEXICO
STATE ENGINEER OFFICE
SANTA FE

S. E. REYNOLDS
STATE ENGINEER

December 30, 1964

ADDRESS CORRESPONDENCE TO:
STATE CAPITOL
SANTA FE, N. M.

Mr. A. L. Porter, Jr.
Secretary-Director
Oil Conservation Commission
Santa Fe, New Mexico

Dear Mr. Porter:

Reference is made to the application of Graridge Corporation which seeks approval to convert one well to water injection in their Artesia Flood No. 3. The subject well is the Resler Yates State well No. 368, Unit G, Sec. 32, T. 18 S., R. 28 E.

This office offers no objection to the granting of the application provided the packer on the cement-lined tubing is set well below the top of the cement surrounding the 4½ inch casing.

Yours truly,

S. E. Reynolds
State Engineer

By: *Frank E. Irby*
Frank E. Irby
Chief
Water Rights Division

FEI/ma
cc-Graridge Corp.
F. H. Hennighausen

GRARIDGE CORPORATION
IBEX BUILDING POST OFFICE BOX 752
BRECKENRIDGE, TEXAS

December 31, 1964

RECEIVED

65 JAN 4 AM 8 11

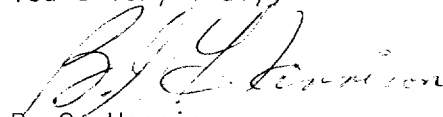
Oil Conservation Commission
State of New Mexico
State Capitol Building
Santa Fe, New Mexico

Re: Application for Administrative
Approval to Convert One Well
to Water Injection Well in
Artesia Flood No. 3
Eddy County, New Mexico

Gentlemen:

Enclosed are signed waiver letters from Kersey and Company,
International Oil and Gas Corporation, and Water Flood Associates
showing that they as offset operators have no objection to the
expansion of the water injection program in the Artesia Flood No.
3 in Eddy County, New Mexico.

Yours very truly,



B. G. Harrison
Manager of Secondary Recovery

GRA/BGH:vw
Enclosures (3)

GRARIDGE CORPORATION

IBEX BUILDING

POST OFFICE BOX 752

BRECKENRIDGE, TEXAS

December 17, 1964

Kersey and Company
P. O. Box 316
Artesia, New Mexico 88210

Gentlemen:

It is the desire of Graridge Corporation to expand the water injection program in the Artesia No. 3 Flood in Eddy County, New Mexico. The expansion is to include the following well:

<u>LEASE</u>	<u>WELL NO.</u>	<u>LOCATION</u>
Resler Yates State	368	Unit G, Sec. 32, T18S, R28E

A fifteen day waiting period is set up by the Commission unless waivers are obtained from all offset operators.

In order to expedite matters, please sign and return two (2) copies of this letter to this office if you have no objection to the proposed expansion.

Yours very truly,



B. G. Harrison
Manager of Secondary Recovery

GRA/BGH:vw

COMPANY Kersey & Co.
SIGNED BY Harold Kersey

GRARIDGE CORPORATION

IBEX BUILDING

POST OFFICE BOX 752

BRECKENRIDGE, TEXAS

December 17, 1964

MAILED

JAN 4 1965

International Gas and Oil
Box 427
Artesia, New Mexico 88210

Gentlemen:

It is the desire of Graridge Corporation to expand the water injection program in the Artesia No. 3 Flood in Eddy County, New Mexico. The expansion is to include the following well:

<u>LEASE</u>	<u>WELL NO.</u>	<u>LOCATION</u>
Resler Yates State	368	Unit G, Sec. 32, T18S, R28E

A fifteen day waiting period is set up by the Commission unless waivers are obtained from all offset operators.

In order to expedite matters, please sign and return two (2) copies of this letter to this office if you have no objection to the proposed expansion.

Yours very truly,



B. G. Harrison
Manager of Secondary Recovery

GRA/BGH:vw

COMPANY International Oil & Gas Corporation

SIGNED BY 
District Superintendent

GRARIDGE CORPORATION

IBEX BUILDING

POST OFFICE BOX 752

BRECKENRIDGE, TEXAS

December 17, 1964

Water-Flood Associates, Inc.
2211 Continental National Bank Building
Fort Worth, Texas 76102

Gentlemen:

It is the desire of Graridge Corporation to expand the water injection program in the Artesia No. 3 Flood in Eddy County, New Mexico. The expansion is to include the following well:

<u>LEASE</u>	<u>WELL NO.</u>	<u>LOCATION</u>
Resler Yates State	368	Unit G, Sec. 32, T18S, R28E

A fifteen day waiting period is set up by the Commission unless waivers are obtained from all offset operators.

In order to expedite matters, please sign and return two (2) copies of this letter to this office if you have no objection to the proposed expansion.

Yours very truly,

B. G. Harrison
B. G. Harrison
Manager of Secondary Recovery

GRA/BGH:vw

WATER FLOOD ASSOCIATES, INC.
Continental Nat'l Bank Bldg.
FORT WORTH 2, TEXAS

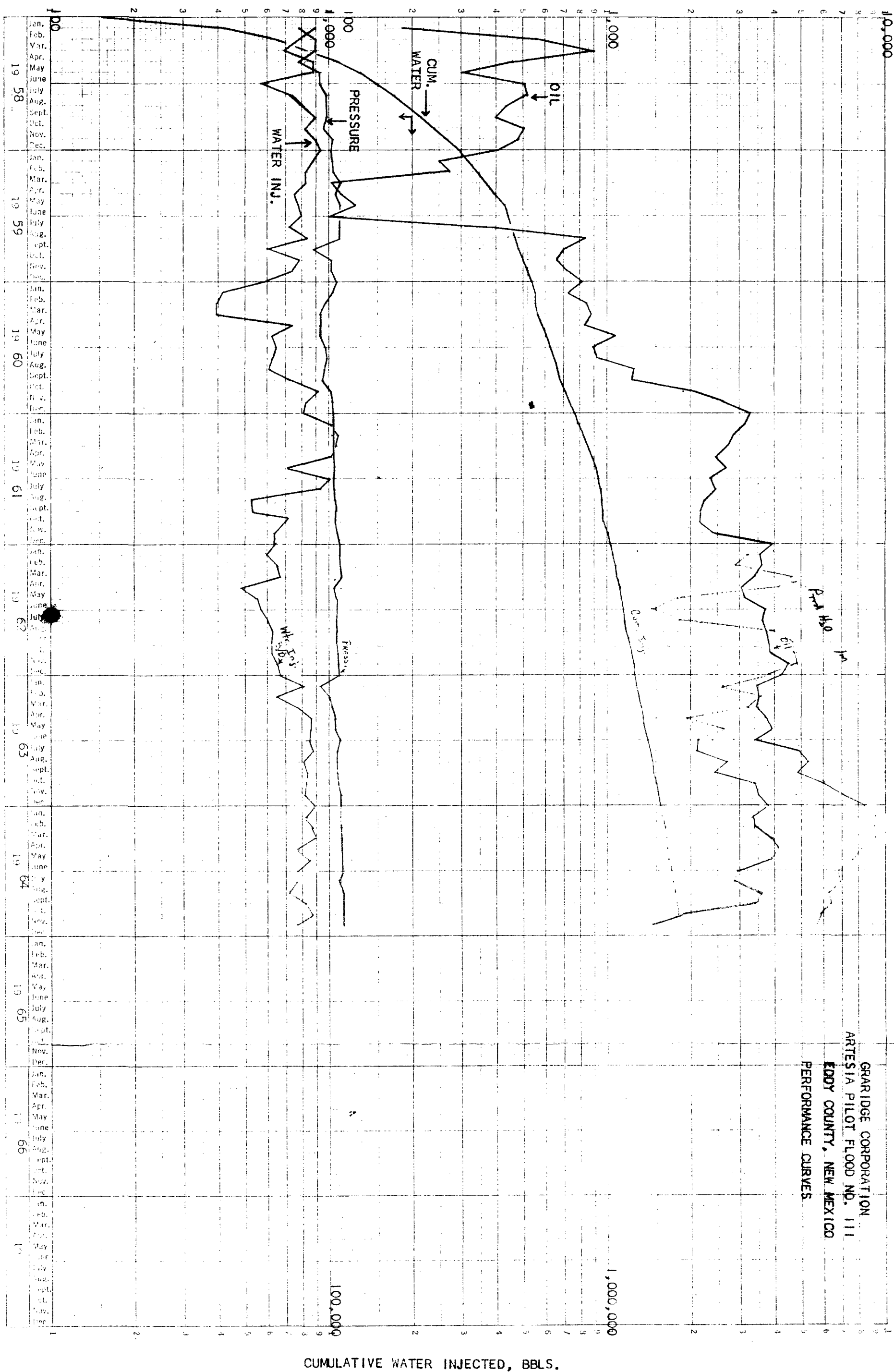
COMPANY

SIGNED BY

WATER INJECTION, BBL/DAY

INJECTION PRESSURE, PSIG.

OIL PRODUCTION, BBL/MO.



GRARIDGE CORPORATION
ARTESIA PILOT FLOOD NO. 111
EDDY COUNTY, NEW MEXICO
PERFORMANCE CURVES

LARGE FORMAT
EXHIBIT HAS
BEEN REMOVED
AND IS LOCATED
IN THE NEXT FILE