



McClellan Oil Corporation

February 9, 1977

Oil Conservation Commission
P. O. Drawer DD
Artesia, New Mexico 88210

Attn: Mr. W. A. Gressett

Re: McClellan Oil Corporation
East Henshaw Unit Tract 16-5
Eddy County, New Mexico

Gentlemen:

On January 19, 1977, McClellan Oil Corporation submitted an application to the Commission requesting approval to expand its East Henshaw Unit Water Flood Project by converting the subject well to injection in accordance with the provisions of Order No. R-5010.

This request was approved by Commission Administrative Order WFX No. 443; however, the Order makes reference to converting the well to injection through "plastic lined" tubing. Our original application made no reference of intent to run plastic lined tubing. This well was originally completed "slim hole" by Humble Oil and Refining Company in 1961 and because of the 2 1/2" casing, it is necessary to run 1" tubing for the injection string. Due to the small diameter injection string, we propose to run it unlined to allow for as large an internal diameter as possible, thereby reducing inherent friction pressure.

As in the case of all injection wells, we will continually monitor the casing pressure at Tract 16-5 to check for possible tubing leaks and should such a condition eventually be indicated, it will be remedied immediately.

Therefore, we request permission to run 1" unlined tubing as indicated on the Diagrammatic Sketch which accompanied our application submitted January 19, 1977.

Yours very truly,

McCLELLAN OIL CORPORATION

Robert R. Graham
Petroleum Engineer

RECEIVED

FEB 14 1977

**O. C. C.
ARTESIA, OFFICE**

McClellan Oil Corporation

January 19, 1977

New Mexico Oil Conservation Commission
P. O. Box 2088
Santa Fe, New Mexico 87501

Re: Application to Convert
East Henshaw Unit
Tract 16-5 to Water Injection
Eddy County, New Mexico

Gentlemen:

Under the provisions of Order No. R-5010, McClellan Oil Corporation hereby applies to the Commission for permission to expand its East Henshaw Unit Water Flood Project in the West Henshaw Grayburg Pool, Eddy County, New Mexico, by converting Tract 16-5 to water injection service.

We will inject into the Premier formation at a depth of approximately 3,000' using fresh water supplied by the City of Carlsbad.

Injection rates will be 100 barrels of water per day initially at a maximum plant pressure of 2,200 psig.

Attached is the necessary information required under Rule 701. Should any additional information be needed, please advise.

Yours very truly,

McCLELLAN OIL CORPORATION



Robert R. Graham
Petroleum Engineer

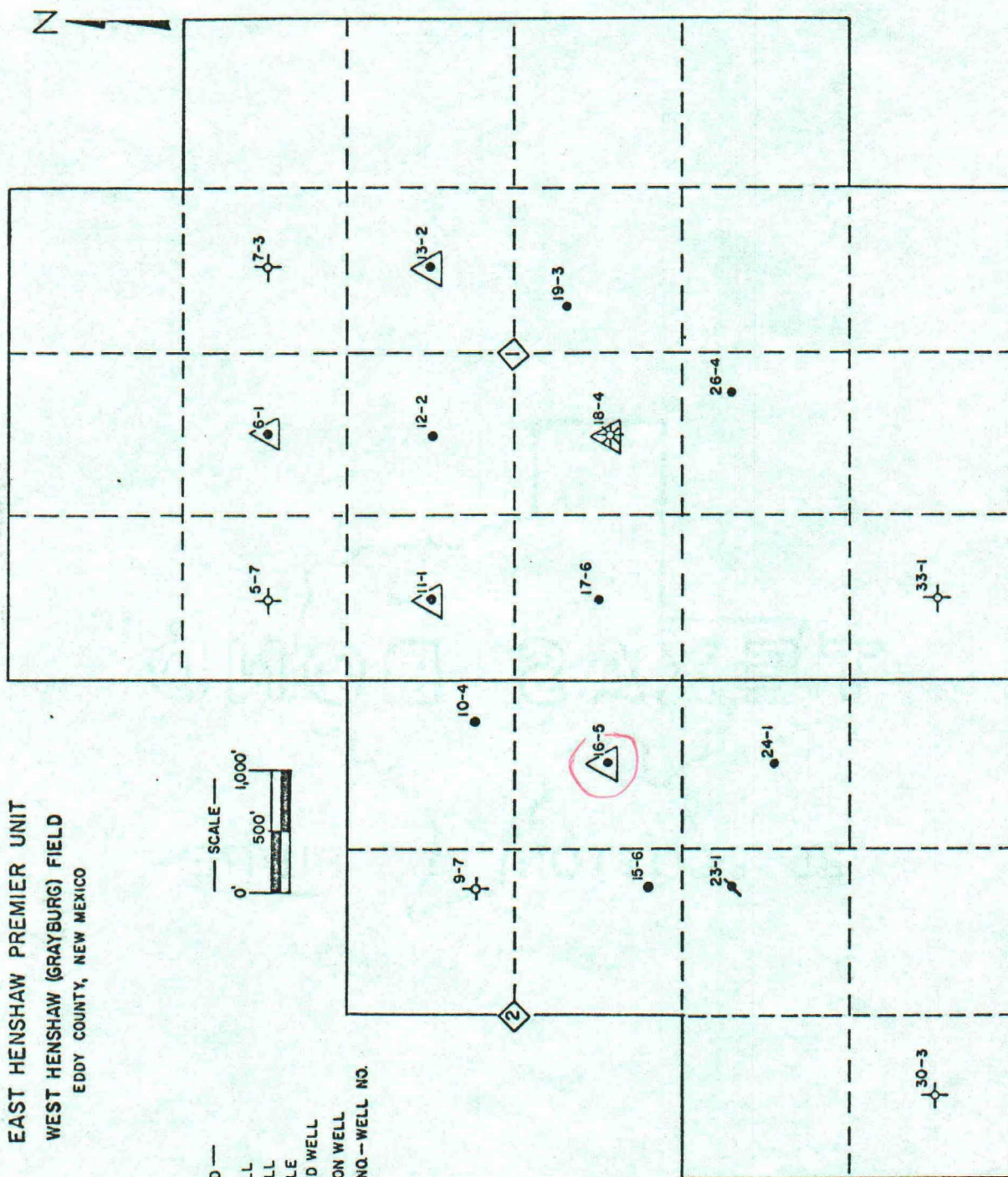
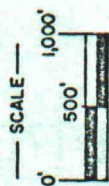
cc: Oil Conservation Commission - Artesia

Attachments: Plat showing location of well
Plat showing offset operators
Copy of Gamma Ray Neutron Log
Schematic sketch of proposed injection well.

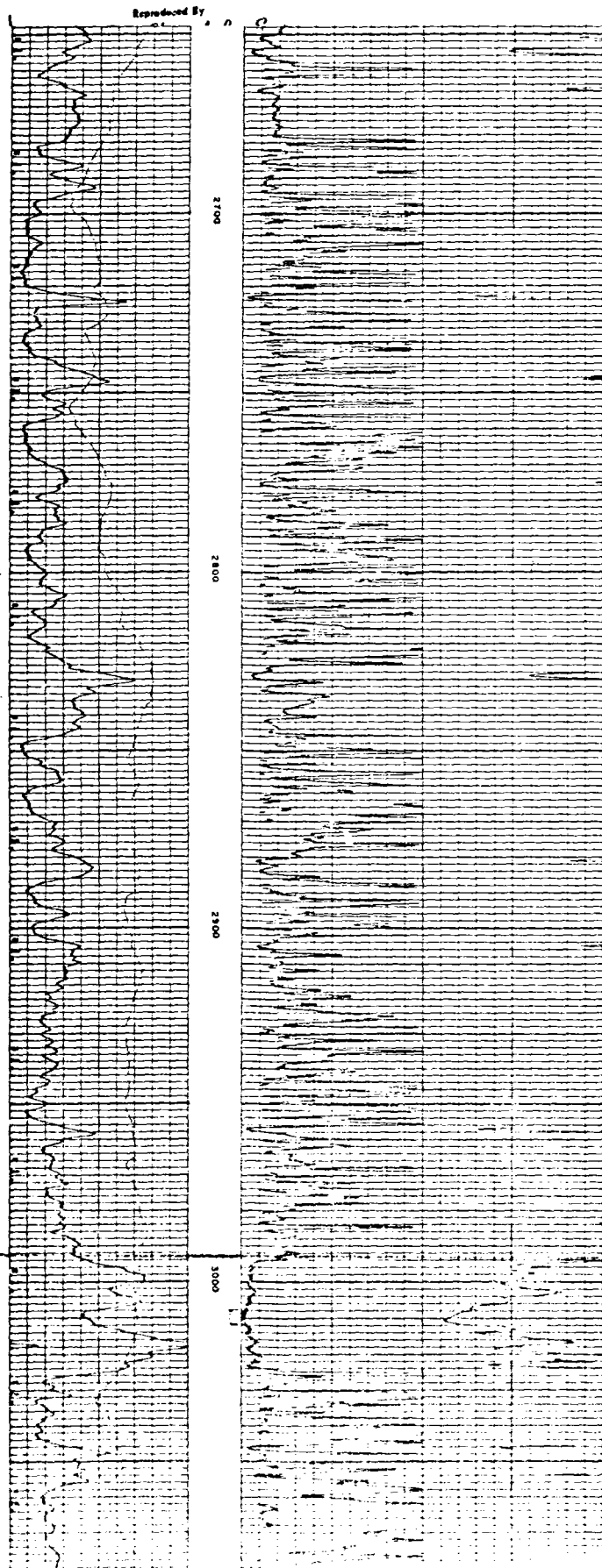
McCLELLAN OIL CORPORATION
 EAST HENSHAW PREMIER UNIT
 WEST HENSHAW (GRAYBURG) FIELD
 EDDY COUNTY, NEW MEXICO

— LEGEND —

- OIL WELL
- ✱ GAS WELL
- ✱ DRY HOLE
- ✱ PLUGGED WELL
- △ INJECTION WELL
- II-1 TRACT NO.—WELL NO.

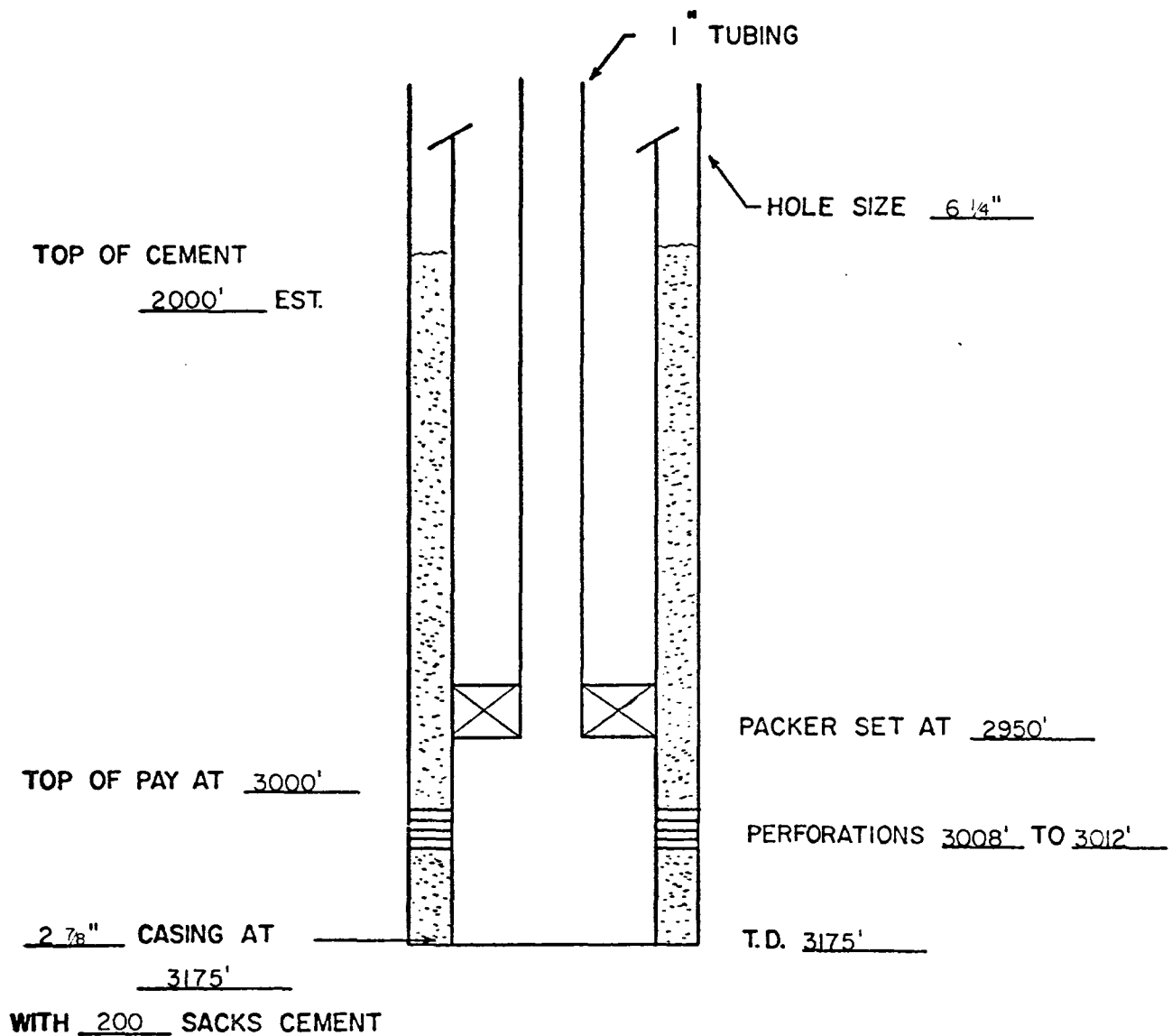


FILE NO.	COMPANY HUMBLE OIL & REFINING COMPANY	
	WELL NEW MEXICO STATE BC NO. 5	
	FIELD WEST MENSMAW	
	COUNTY EDOY	STATE NEW MEXICO
	LOCATION 3300 FSL & 660' FEL	
	SEC 2	TWP 16-S RGE 30-E
Permanent Datum	7' Csg. Meas. Flange	Elev 3947
Log Measured from	K.O.B.	11' Above Permanent Datum
Drilling Measured from	K.O.B.	GL 3228
Date	7-8-61	
Run No.	078	
Depth—Driller	3172	
Depth—Logger	3173	
Bottom Logged Interval	3171	
Top Logged Interval	Surf 1954	
Coring—Driller	7' - 109	
Coring—Logger	7' - 109	
Bit Size	6 1/4" - 2 3/8" 6 1/8" - 3 1/2"	
Type Fluid in Hole	Salt Gel	
Density and Viscosity	10.8 38	
pH and Fluid Loss		
Source of Sample	Fm 4	
Sp @ Meas. Temp.	067 0.72	
Rm @ Meas. Temp.	052 0.72	
Rmc @ Meas. Temp.	081 0.72	
Source of Rm and Rmc	Fm 4	
Rm @ 80°F	044 0.93	
Time Since Cut	1 Hour	
Max. Rec. Temp. Deg. F	93	
Equip. No. and Location	4436 Hobbs	
Recorded By	Schiffman	
Witnessed By	Mr. Whitten	



McCLELLAN OIL CORPORATION
EAST HENSHAW PREMIER UNIT
WEST HENSHAW GRAYBURG FIELD
EDDY COUNTY, NEW MEXICO

DIAGRAMMATIC SKETCH
PROPOSED WATER INJECTION WELL
WELL NO. 16-5



OTHER WELL DATES:

COMPLETION DATE: 7-7-61

ELEVATION: 3937'

TREATMENT: 20,000 # SAND

ORIGINAL OWNER, LEASE & WELL NO.: HUMBLE, STATE "BC" NO. 5

OIL CONSERVATION COMMISSION
Artesia DISTRICT

OIL CONSERVATION COMMISSION
BOX 2088
SANTA FE, NEW MEXICO

DATE 1-26-77

RE: Proposed MC _____
Proposed DHC _____
Proposed NSL _____
Proposed SWD _____
Proposed WFX X _____
Proposed PMX _____

Gentlemen:

I have examined the application dated 1-19-77
McClellan Oil Corp. East Henshaw Unit Tr. 16-5 P-2-16-30
for the " " " " 18-4 O-1-16-30
Operator Lease and Well No. Unit, S-T-R

and my recommendations are as follows:

Approval

Yours very truly,

W. A. Gussett