



TIERRA

ENVIRONMENTAL CORPORATION

NEW MEXICO OIL CONSERVATION DIVISION
RECEIVED

93 SEP 23 PM 9 04

CORPORATE OFFICE
6846 S. Canton, Suite 100
Tulsa, OK 74136
918-496-3200

REGIONAL OFFICE
909 W. Apache
Farmington, NM 87401
505-325-0924

September 21, 1993

Roger Anderson, Bureau Chief
New Mexico Oil Conservation Division
P.O. Box 2088
Santa Fe, New Mexico 87504-2088

RE: CLASS I NON HAZARDOUS INJECTION WELL, BLOOMFIELD
REFINING COMPANY, PERMIT APPLICATION AMENDMENT:

Dear Mr. Anderson:

As you are aware, Bloomfield Refining Company (BRC), has applied to the OCD for a modification of their discharge plan to include a Class I non-hazardous injection well that will inject into the Cliff House Formation. During the review process by OCD, two (2) production wells, the Amoco Davis Gas Com "F" No.1 and the Meridian Oil Calvin No. 1, contained within the area of review were identified as not being properly cemented. BRC successfully negotiated with Amoco to P & A the Davis Gas Com "F" well. They were unsuccessful negotiating with Meridian to cement squeeze the Calvin No. 1 Well. Therefore, Bloomfield Refining asked Tierra to relocate the proposed injection well so that the Calvin No. 1 would be outside the area of review and not at issue.

On August 20, 1993, OCD issued an Administrative Order No. SWD-528 authorizing BRC to complete the well but stipulating that the Calvin No. 1 Well and Amoco Davis well be cemented to surface.

On behalf of Bloomfield Refining, we are requesting the order be amended to include the new proposed location. Enclosed for your review is a list of wells located within one-half mile of the new proposed location that penetrate the Cliff House Formation, a map identifying the new area of review, and a location map. As you will see the Davis Gas Com "F" No. 1 is still at issue. It will be plugged and abandoned. The other wells have cement circulated to the surface. The Meridian Oil Calvin No.1 is just outside of the new area of review.

Roger Anderson
September 21, 1993
Page 2

Once approval for the relocation of the well is received, we will proceed with submission of the application to drill, plugging bond etc.

I hope this information is sufficient. If you have any questions or require more information please call me at (505) 325-0924.

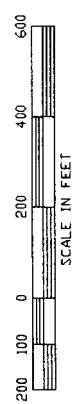
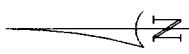
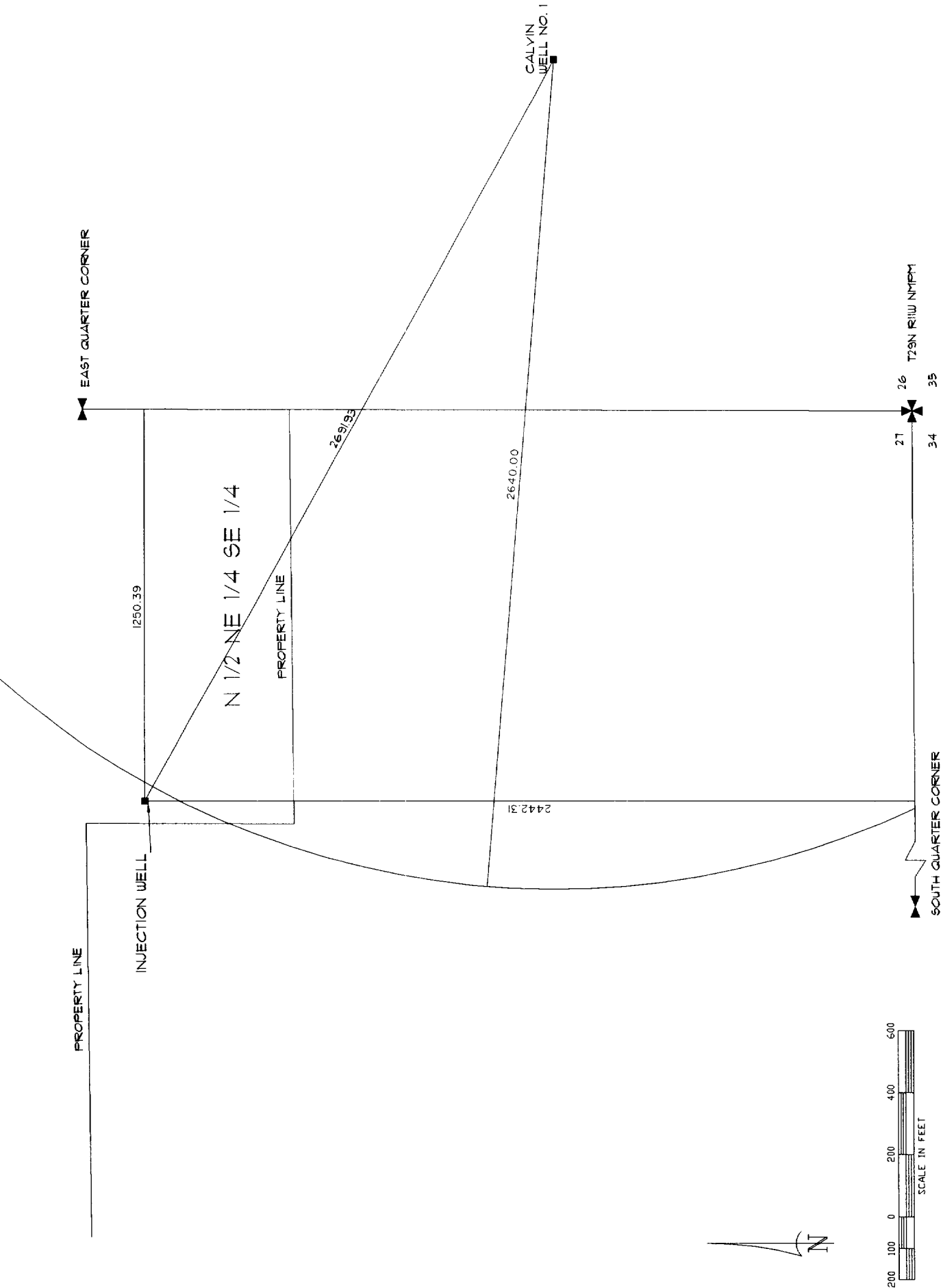
Sincerely,

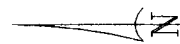
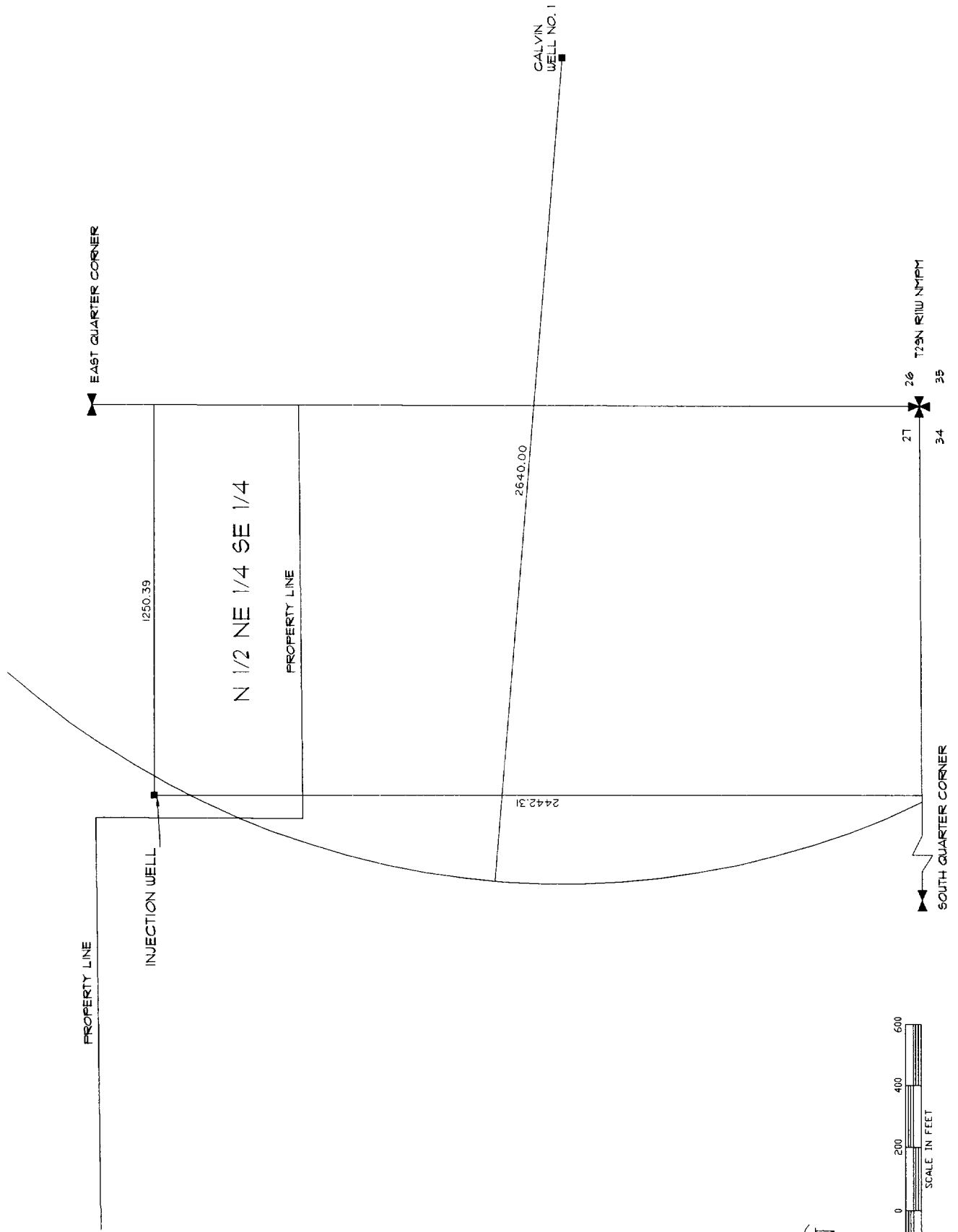
TIERRA ENVIRONMENTAL CORPORATION

A handwritten signature in cursive script, reading "Phillip C. Nobis".

Phillip C. Nobis
Vice President

PCN/lp





The following is a list of wells located within one half mile of the new amended injection well location and have penetrated the Cliff House Formation:

AMOCO Davis Gas Com "F" No. 1E

NE, Sec. 27, T29N, R11W
1575 from north line
1150 from east line
TD: 6388'
Cement Circulated to surface.

AMOCO Davis Gas Unit-F No. 1

SE, Sec.27, T29N, R11W
1850' from south line
1190 from east line
TD: 6365'
This well will be P&A by agreement.

Meridian Oil Congress No. 18

SW, Sec.27, T27N, R11W
2127' from south line
1937' from west line
TD: 6150'
Cement circulated to surface

Meridan Oil Mangum No. 1E

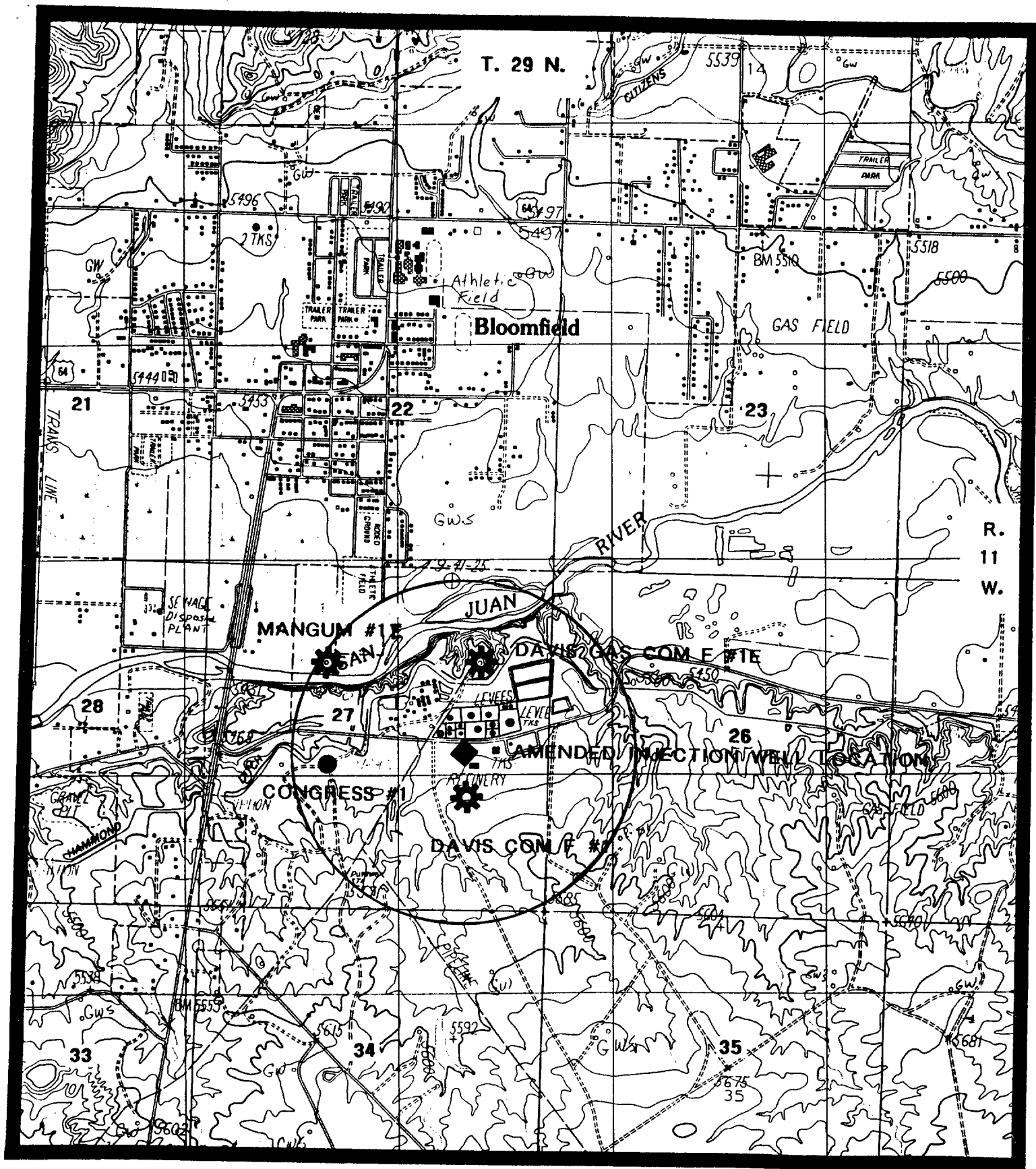
NW, Sec. 27, T29N, R11W
1520' from north line
1735' from west line
TD: 6240'
Cement circulated to surface

Proposed Injection Well Location (new amended location)

Formation Name	Depth (top of Km) KS-6540	Thickness of Formation	Production
Macomber	5120'	500'	none
Ojo Alamo	5500'	115'	none
Hartland (horny) Rd	770'	605'	oil
Frederick	1400'	300'	gas
Richard Hill	1710'	70'	oil
Levens (Cherry Hill)	1880'	1500'	oil
Cherry House	3000'	110'	none
Planter	3000'	600'	gas
East Lockport	3200'	200'	oil/gas

The depth and thickness values are specified from nearby wells in sections 26 and 27, T24N, R11E that were drilled during the feasibility study. Depths to the top of specific formations may change once an accurate surface elevation is obtained after the proposed injection well location is selected. Production data is generated in this report to show the general types of fluids that are produced in the area of the proposed well.

ILLEGIBLE



Map showing the new amended well location (diamond symbol) in Section 27, T29N, R11W. The location of four wells penetrating the Cliff House Formation and falling within the half mile radius of the proposed injection well are also shown on the map.

LARGE FORMAT
EXHIBIT HAS
BEEN REMOVED
AND IS LOCATED
IN THE NEXT FILE