

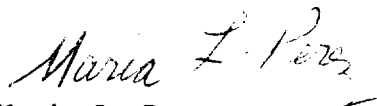
Mr. Floyd O. Prando, Director
Office of the Commissioner of Public Lands
Page 2

OIL CONSERVATION DIVISION
RECEIVED
FEB 2 1984

This is not a request to surface commingle. Meridian owns 100% working interest on both the Tijeras State No. 1 Lease and the Federal "21" Lease.

Should you require additional information on this request, please call me at A/C 915-688-6906.

Sincerely,




Maria L. Perez
Production Asst.

MLP/sm

enclosure

xc: Mr. Barry Hunt
Bureau of Land Management
P. O. Box 1778
Carlsbad, NM 88221-1778



Mr. David Catanach
Oil Conservation Commission
P. O. Box 2088
Santa Fe , NM 87504

Well File
Don McBee
Land Dept. (2)
Jt. Interest
Resv. Engineer
Prod. Engineer
Brett Adams
Richard Atchley
Reading File
Maria Perez

Submit to Appropriate
District Office
State Lease - 4 copies
Fee Lease - 3 copies

State of New Mexico
Energy, Minerals and Natural Resources Department

Form C-102
Revised 1-1-89

OIL CONSERVATION DIVISION

DISTRICT I
P.O. Box 1980, Hobbs, NM 88240

P.O. Box 2088
Santa Fe, New Mexico 87504-2088

DISTRICT II
P.O. Drawer DD, Artesia, NM 88210

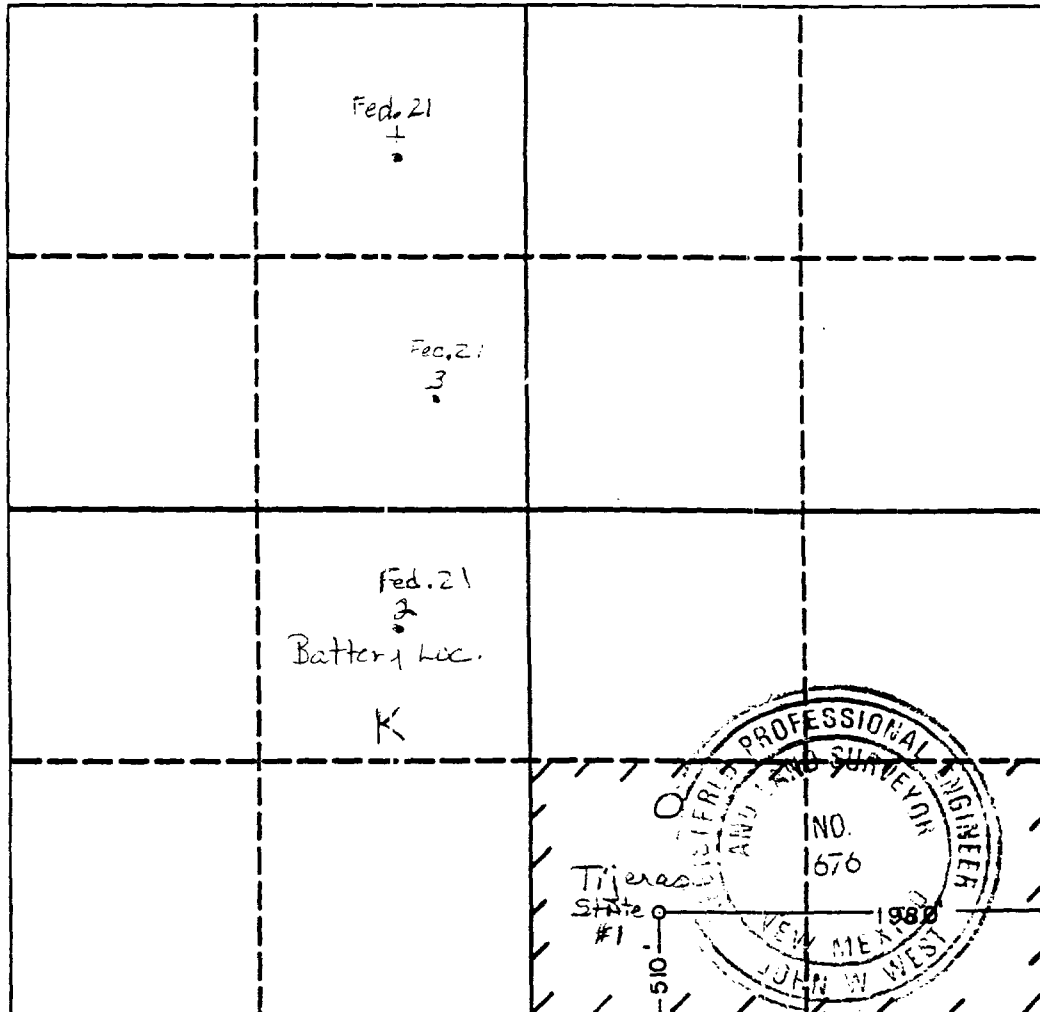
DISTRICT III
1000 Rio Brazos Rd., Aztec, NM 87410

WELL LOCATION AND ACREAGE DEDICATION PLAT

All Distances must be from the outer boundaries of the section

Operator MERIDIAN OIL INC.			Lease TIJERAS STATE		Well No. 1
Unit Letter 0	Section 21	Township 18 SOUTH	Range 33 EAST	County LEA	NMPM
Actual Footage Location of Well: 1980 feet from the EAST line and 510 feet from the SOUTH line					
Ground level Elev. 3815.3	Producing Formation WOLFCAMP		Pool SOUTH CORBIN- WOLFCAMP		Dedicated Acreage: 80 Acres

1. Outline the acreage dedicated to the subject well by colored pencil or hatchure marks on the plat below.
2. If more than one lease is dedicated to the well, outline each and identify the ownership thereof (both as to working interest and royalty).
3. If more than one lease of different ownership is dedicated to the well, have the interest of all owners been consolidated by communitization, unitization, force-pooling, etc.?
☐ Yes ☐ No If answer is "yes" type of consolidation _____
If answer is "no" list the owners and tract descriptions which have actually been consolidated. (Use reverse side of this form if necessary.)
No allowable will be assigned to the well until all interests have been consolidated (by communitization, unitization, forced-pooling, or otherwise) or until a non-standard unit, eliminating such interest, has been approved by the Division.



OPERATOR CERTIFICATION

I hereby certify that the information contained herein is true and complete to the best of my knowledge and belief.

Signature *Connie Malik*
Printed Name *Connie Malik*
Position *Regulatory Compliance Rep*
Company MERIDIAN OIL INC.
Date *9-4-91*

SURVEYOR CERTIFICATION

I hereby certify that the well location shown on this plat was plotted from field notes of actual surveys made by me or under my supervision, and that the same is true and correct to the best of my knowledge and belief.

Date Surveyed AUG. 1, 1991

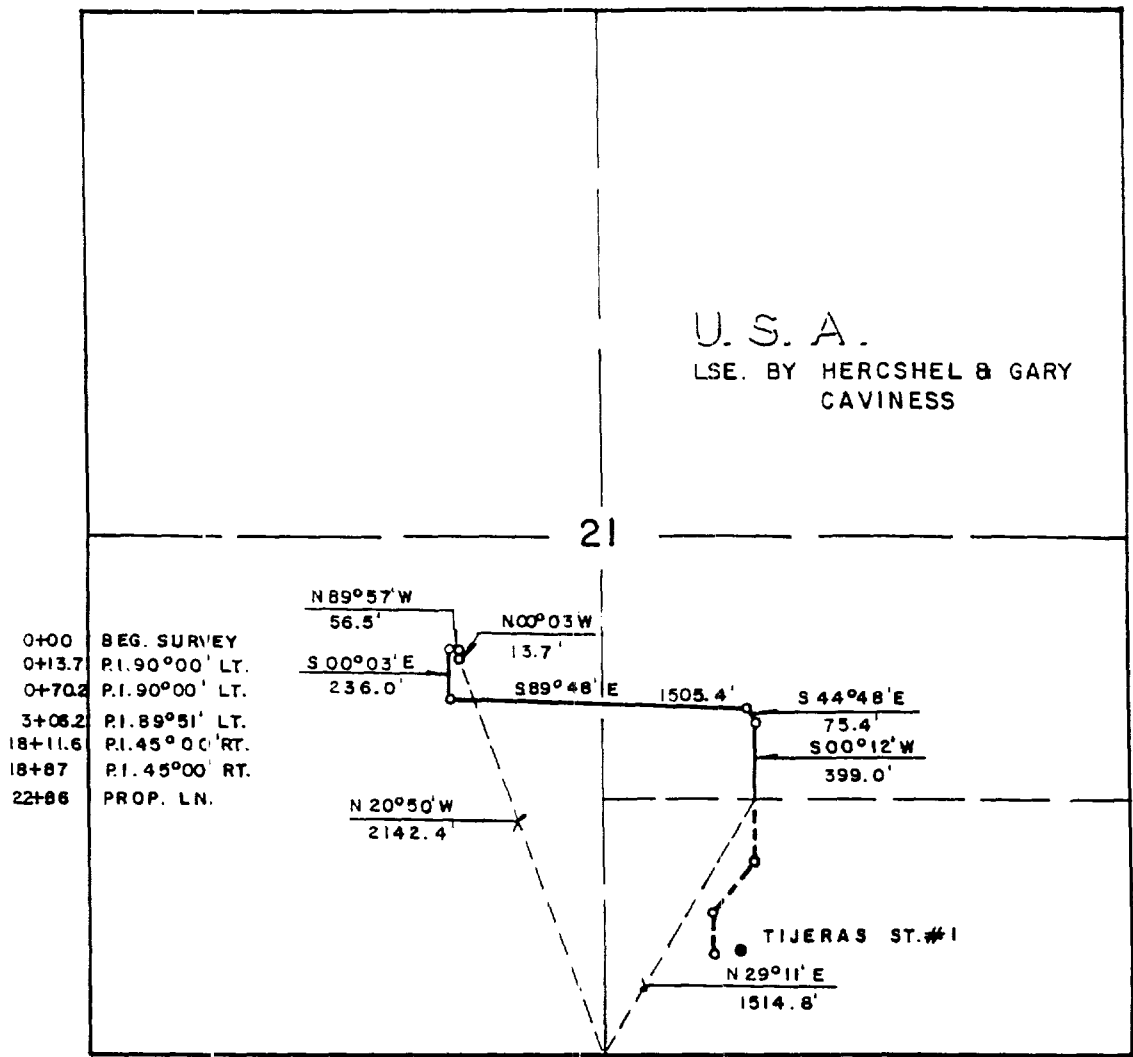
Signature & Seal of Professional Surveyor

John W. West
Certified No. JOHN W. WEST, 676
RONALD J. EIDSON, 3239

[illegible]

drawing by brett adams
january 30, 1992

SECTION 21, TOWNSHIP 18 SOUTH, RANGE 33 EAST, N.M.P.M.,
LEA COUNTY, NEW MEXICO



LEGAL DESCRIPTION

A strip of land 50.0 feet wide and 2286.0 feet or 0.43 miles in length, being 25.0 feet right and 25.0 feet left of the above platted survey of centerline.



I HEREBY CERTIFY THAT THIS PLAT WAS MADE FROM NOTES TAKEN IN THE FIELD IN A BONA FIDE SURVEY MADE UNDER MY SUPERVISION, AND THAT THE SAME IS TRUE AND CORRECT TO THE BEST OF MY KNOWLEDGE AND BELIEF.

John W. West
JOHN W. WEST, N.M. P.E. & L.S. No. 676
TEXAS R.P.S. No. 1138
RONALD J. EIDSON, N.M. L.S. No. 3239
TEXAS R.P.S. No. 1883

Tijeras State No. 1 - Flowline

MERIDIAN OIL

A proposed flowline crossing Federal Land in Section 21, Township 18 South, Range 33 East, N.M.P.M., Lea County, New Mexico.

JOHN W. WEST ENGINEERING COMPANY
CONSULTING ENGINEERS HOBBS, NEW MEXICO
Scale: 1" = 1000'
Date: 8/12/91 Ck. Sheet 1 of 1 Sheets
Drawn By: R. Doporto



025-168

State of New Mexico
Commissioner of Public Lands

310 OLD SANTA FE TRAIL P.O. BOX 1148

SANTA FE, NEW MEXICO 87504-1148

April 18, 1996

(505) 827-5760
FAX (505) 827-5766

RAY POWELL, M.S., D.V.M.
COMMISSIONER

Meridian Oil Inc.
Post Office Box 5181
Midland, Texas 79710-1810

Attn: Ms. Donna J. Williams

Re: Off Lease Storage Application
Tijeras State Well No. 1
SW4SE4, Section 21-18S-33E
Lea County, New Mexico

Dear Ms. Williams:

We received your letter of April 4, 1996, wherein you requested permission to store the Tijeras State Well No. 1 production off-lease, at the Federal 21 Battery located in Unit Letter K, Section 21-18S-33E, Lea County, New Mexico.

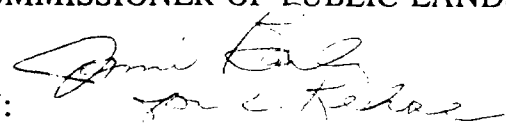
The Commissioner of Public Lands approves your request to off lease store the production from the above-mentioned well. It is our understanding that all production from this well will be metered separately.

Pursuant to State Land Office Rule No. 1.055, please submit a \$30.00 filing fee.

If you have any questions, or if we may be of further help, please contact Pete Martinez at (505) 827-5791.

Very truly yours,

RAY POWELL, M.S., D.V.M.
COMMISSIONER OF PUBLIC LANDS

BY: 
LARRY KEHOE, Director
Oil, Gas and Minerals Division
(505) 827-5744

RP/LK/cpm

Enclosure

cc: Reader File

VB-425

OCD--Mr. David Catanach

RESOURCE MANAGEMENT: COMMERCIAL (505)-827-5724, MINERALS (505)-827-5744, SURFACE (505)-827-5793, ROYALTY (505)-827-5772,
ADMINISTRATIVE MANAGEMENT (505)-827-5700, COMMUNICATION & PUBLIC AFFAIRS (505)-827-5764, and GENERAL COUNSEL (505)-827-5713