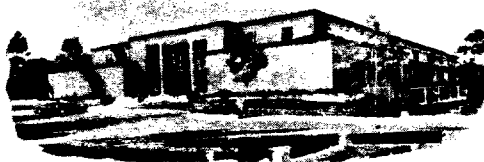




State of New Mexico



Commissioner of Public Lands

May 13, 1975

TELEPHONE
505-827-2748

*File
OLS 95*

PHIL R. LUCERO
COMMISSIONER

P. O. BOX 1148
SANTA FE, NEW MEXICO 87501

Stevens Oil Company
P. O. Box 1797
Santa Fe, New Mexico 87501

Re: K-2803

Dear Mr. Stevens:

Reference is made to your request to permit the production from your Citgo-State # 2 located in Unit J of Section 36, Township 8 South, Range 28 East, Chaves County, New Mexico, to be transported prior to measurement to your Citgo-State "A" lease located in Unit O of Section 36, Township 8 South, Range 28 East, Chaves County, New Mexico for storage thereon.

You are hereby given approval to the above request. This approval is subject to like approval by the New Mexico Oil Conservation Commission.

Please remit a Ten (\$10.00) Dollar filing fee.

Very truly yours,

PHIL R. LUCERO
COMMISSIONER OF PUBLIC LANDS

BY:
RAY D. GRAHAM, Director
Oil and Gas Division

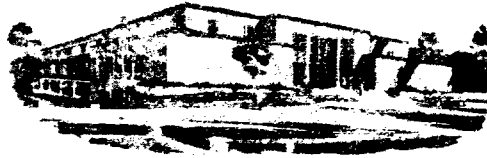
PRL/RDG/s
encl.

cc:

New Mexico Oil Conservation Commission ✓
New Mexico Oil & Gas Accounting Commission
State Lease No. K-2803, OG-4681

TELEPHONE
502-837-3748

State of New Mexico



Commissioner of Public Lands

May 13, 1972

PHIL R. LUCERO
COMMISSIONER

SANTA FE, NEW MEXICO 87301
P.O. BOX 1148

State Oil Company
P.O. Box 1797
Santa Fe, New Mexico 87501

Re: K-2803

Dear Mr. President:

Reference is made to your request to permit the production from Unit 3 of Section 36, Township 8 North, Range 28 East, Chaves County, New Mexico, to be transported prior to measurement to your Oilgo-State "A" lease located in Unit 0 of Section 36, Township 8 North, Range 28 East, Chaves County, New Mexico for storage thereon.

You are hereby given approval to the above request. This approval is subject to the approval of the New Mexico Oil Conservation Commission.

Please remit a fee (\$10.00) dollar filing fee.

Very truly yours,

PHIL R. LUCERO
COMMISSIONER OF PUBLIC LANDS

BY:
RAY D. GRAHAM, Director
Oil and Gas Division

New Mexico Oil & Gas Accounting Commission
New Mexico Oil Conservation Commission
State Lease No. K-2803, OG-4681

FILED
cc.

STEVENS OIL COMPANY

FORMERLY TWINLAKES OIL COMPANY

P. O. BOX 1797

SANTA FE, NEW MEXICO 87501

Donald G. Stevens
Owner

505 982-8583

May 8, 1975

Secretary-Director
N.M. Oil Conservation Commission
State Land Office Building
Santa Fe, New Mexico 87501

OLS - 95
dated 5/23/75

Gentlemen:

Stevens Oil Company seeks an exception to Rule 309-A to permit the production from its Citgo-State #2 located in Unit J of Section 36, Township 8 South, Range 28 East, Chaves County, New Mexico, to be transported prior to measurement to its Citgo-State "A" lease located in Unit O of Section 36, Township 8 South, Range 28 East, Chaves County, New Mexico for storage thereon. The ownership of the Citgo-State lease is as follows:

1. Stevens Oil Company is the operator with a 4.296875% ORR and a 37.5% working interest after payout.
2. Harvard Exploration Co. owns 75% working interest until payout and 37.5% working interest after payout. H. Lee Harvard owns a 1% overriding royalty interest.
3. Cities Service Oil Company is the owner of an overriding royalty interest amounting to 8.203125% of the 87.5% working interest.
4. The State of New Mexico is the owner of a 12.500% royalty interest.

The ownership of the SW/4SE/4 of Section 36, Township 8 South, Range 28 East, Chaves County, New Mexico is as follows:

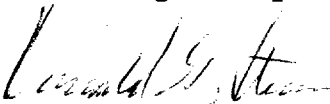
1. Stevens Oil Company is the operator with a 4.296875% ORR and a 37.5% working interest after payout.
2. Harvard Exploration Co. owns 75% working interest until payout and 37.5% working interest after payout.
3. Cities Service Oil Company is the owner of an overriding royalty interest amounting to 8.203125% of the 87.5% working interest.
4. The State of New Mexico is the owner of a 12.500% royalty interest.

May 8, 1975

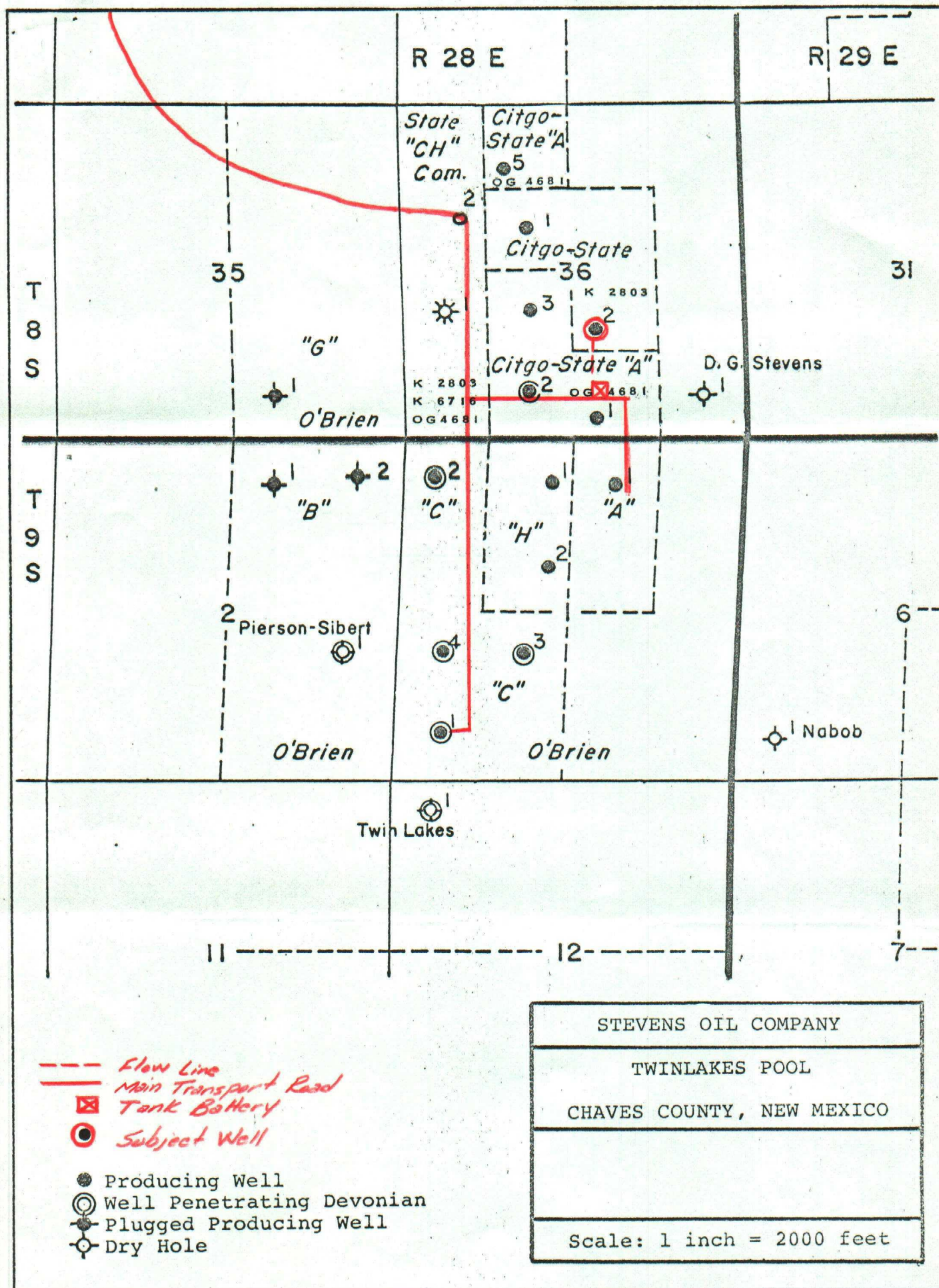
Enclosed is a plat showing the wells on the leases and the formations in which completed and also the location of tank battery and flowlines. Tank battery has been located in this site to facilitate offloading into transports along the company's main all-weather transport road. The applicant further states:

1. All production is from the same common source of supply.
2. Commingling of production from the two leases will not result.
3. There will be no intercommunication of the handling, separating, treating, or storage facilities designated to each lease.
4. All parties owning a working or royalty interest in the lease have consented in writing to the off-lease storage or will consent in writing to the off-lease storage or have been mailed registered certified mail of Stevens Oil Company's intent to transport as set out herein. Evidence of the above will be furnished the Commission shortly.
5. State lands are involved and evidence will be furnished that the Commissioner of Public Land will consent to the proposed off-lease storage.

Yours very truly,


Donald G. Stevens

DGS/w1
Enc.



STEVENS OIL COMPANY

FORMERLY TWINLAKES OIL COMPANY

P. O. BOX 1797

SANTA FE, NEW MEXICO 87501

Donald G. Stevens
Owner

505 982-8583

May 8, 1975

Mr. H. Lee Harvard
Harvard Exploration, Ltd.
P.O. Box 936
Roswell, New Mexico 88201

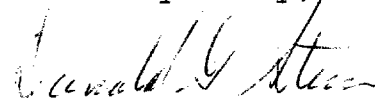
Re: Off-Lease Storage:
Citgo State #2
Unit J, Sec. 36, 8S, 28E
Chaves County, N.M., to
Unit O, Sec. 36, 8S, 28E

Dear Mr. Harvard:

Enclosed are completion reports on the Stevens Oil Company Citgo-State No. 2 well (originally filed as the Citgo-State "B" No. 2).

Also enclosed is a copy of an application for off-lease storage directed to the New Mexico Oil Conservation Commission whereby production from this well will be transported to and stored in a presently existing tank one-quarter mile south. This tank has been constructed on our main all-weather transport road to facilitate offloading. Inasmuch as a twenty-day waiting period is required by the Commission unless you agree in writing to the off-lease storage, I would appreciate your immediate approval of said off-lease storage by executing in the lower left-hand corner and returning a copy to me immediately. Should it be necessary to wait the full twenty-day period there is a possibility we will run out of storage and be forced to shut-in the well.

Yours very truly,


Donald G. Stevens

APPROVAL OF OFF LEASE STORAGE on
Unit O, Section 36, T 8 S, R 28 E,
Chaves County, New Mexico,
ACCEPTED this 13th day of May, 1975.

HARVARD EXPLORATION, LTD.


H. Lee Harvard

STEVENS OIL COMPANY

FORMERLY TWINLAKES OIL COMPANY

P. O. BOX 1797

SANTA FE, NEW MEXICO 87501

Donald G. Stevens
Owner

505 982-8583

May 8, 1975

REGISTERED MAIL

Cities Service Oil Company
800 Vaughn Building
Midland, Texas 79701

Attention: J. Frank Riney

Gentlemen:

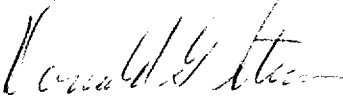
Re: Off-Lease Storage:
Citgo State #2
Unit J, Sec. 36, 8S, 28E
Chaves County, N.M., to
Unit O, Sec. 36, 8S, 28E

Enclosed are completion reports on the Stevens Oil Company Citgo-State No. 2 well (filed initially as the Citgo-State "B" No. 2) which is the third well drilled and completed under the terms of that certain farmout contract between Cities Service and Donald G. Stevens, dated August 27, 1973, and amended by letters of September 11, 1973 and January 31, 1974.

Under the terms of said farmout contract Donald G. Stevens is entitled to the assignment as set forth therein since the well has been completed as a producer of oil and gas under said terms. I would appreciate your forwarding to Donald G. Stevens said assignment at your earliest convenience.

Also enclosed is a copy of an application for off-lease storage directed to the New Mexico Oil Conservation Commission whereby production from this well will be transported to and stored in a presently existing tank one-quarter mile south. This tank has been constructed on our main all-weather transport road to facilitate offloading. Inasmuch as a twenty-day waiting period is required by the Commission unless you agree in writing to the off-lease storage, I would appreciate your immediate approval of said off-lease storage by executing in the lower left-hand corner and returning a copy to me immediately. Should it be necessary to wait the full twenty-day period there is a possibility we will run out of storage and be forced to shut-in the well.

Yours very truly,


Donald G. Stevens

APPROVAL of off-lease storage on
Unit O, Section 36, T 8 S, R 28 E,
Chaves County, New Mexico,
ACCEPTED this 12th day of May, 1975.

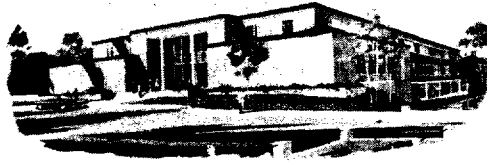
CITIES SERVICE OIL COMPANY

By 



State of New Mexico

TELEPHONE
505-827-2748



Commissioner of Public Lands

May 13, 1975

PHIL R. LUCERO
COMMISSIONER

P. O. BOX 1148
SANTA FE, NEW MEXICO 87501

Stevens Oil Company
P. O. Box 1797
Santa Fe, New Mexico 87501

Re: K-2803

Dear Mr. Stevens:

Reference is made to your request to permit the production from your Citgo-State # 2 located in Unit J of Section 36, Township 8 South, Range 28 East, Chaves County, New Mexico, to be transported prior to measurement to your Citgo-State "A" lease located in Unit O of Section 36, Township 8 South, Range 28 East, Chaves County, New Mexico for storage thereon.

You are hereby given approval to the above request. This approval is subject to like approval by the New Mexico Oil Conservation Commission.

Please remit a Ten (\$10.00) Dollar filing fee.

Very truly yours,

PHIL R. LUCERO
COMMISSIONER OF PUBLIC LANDS

BY: *Ray D. Graham*
RAY D. GRAHAM, Director
Oil and Gas Division

PRL/RDG/s
encl.

cc: New Mexico Oil Conservation Commission
New Mexico Oil & Gas Accounting Commission
State Lease No. K-2803, OG-4681

STEVENS OIL COMPANY

FORMERLY TWINLAKES OIL COMPANY

P. O. BOX 1797

SANTA FE, NEW MEXICO 87501

Donald G. Stevens
Owner

RECEIVED
MAY 12 9 04 AM '75
STATE OF NEW MEXICO
SANTA FE
505 982-8583

May 8, 1975

Commissioner of Public Lands
State Land Office Building
Santa Fe, New Mexico 87501

Attention: Mr. Ray Graham

Re: K 2803

K-2803
OG-4681 C.S.
(K-6716)

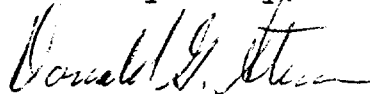
Gentlemen:

Enclosed is a copy of a request for off-lease storage directed to the New Mexico Oil Conservation Commission. As shown in said request Stevens Oil Company seeks approval of transporting and storing oil from its No. 2 Citgo-State of State Lease K 2803 to a tank battery located approximately one-eighth mile south on State Lease OG 4681.

This tank battery is already in position along our company's main all-weather transport road to facilitate offloading. As shown on the enclosed request there will be no inter-communication of this well with other wells.

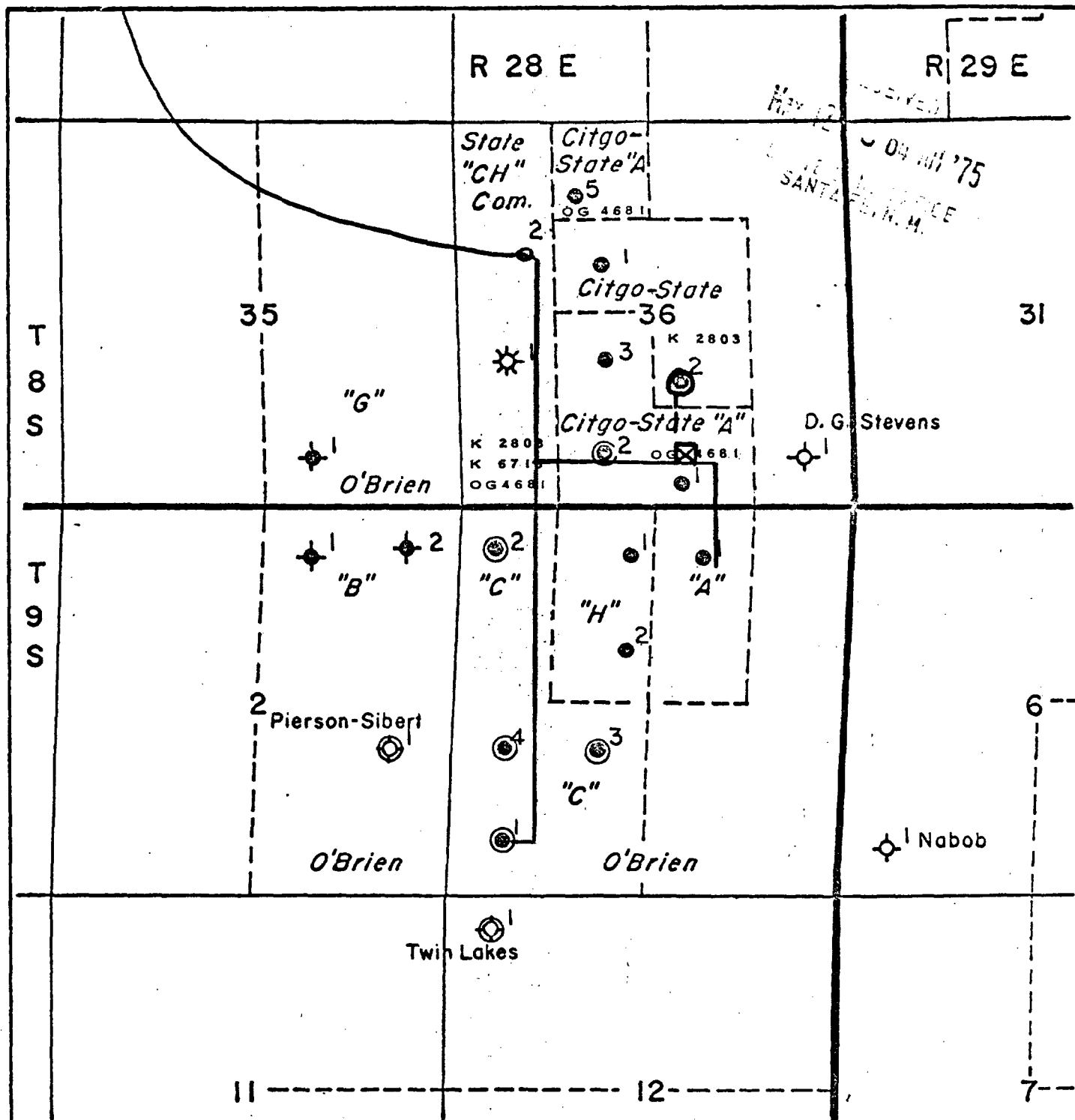
Commission rules provide that the State of New Mexico must approve of said request where State land is involved prior to the Commission's approval. I would appreciate your favorable consideration of this request.

Yours very truly,



Donald G. Stevens

DGS/wl
Enc.



- Flow Line
- Main Transport Road
- ☒ Tank Battery
- ⊙ Subject Well
- Producing Well
- ⊙ Well Penetrating Devonian
- ⊗ Plugged Producing Well
- ⊙ Dry Hole

STEVENS OIL COMPANY

TWINLAKES POOL

CHAVES COUNTY, NEW MEXICO

Scale: 1 inch = 2000 feet