

SHELL OIL COMPANY

P. O. Box 1858
Roswell, New Mexico

July 19, 1965

MAIN OFFICE 000

'65 JUL 21 AM 7 24

George W. Deal

New Mexico Oil Conservation Commission (3)
P. O. Box 871
Santa Fe, New Mexico

Gentlemen:

Reference is made to New Mexico Oil Conservation Commission Administrative Order PC-107, a supplement to Order No. R-2099, authorizing Shell Oil Company to commingle top allowable Blinebry production with marginal Drinkard, Terry Blinebry, and Hare production on the Shell Taylor-Glenn Lease. As specified in Order PC-107, the Blinebry production is metered separately and the commingled Drinkard, Terry Blinebry, and Hare production is metered separately prior to over-all commingling.

This is to inform you that all zones on the Taylor-Glenn Lease are now marginal, with no wells capable of top allowable production. We therefore request permission to discontinue the separate measurement of production prior to commingling as described above. We propose, rather, to allocate production from each well and each pool on the basis of monthly well tests.

The proposed revised commingling installation will be operated in accordance with the Commission's "Manual for the Installation and Operation of Commingling Facilities". In support of our proposal, we are attaching for your consideration a lease plat, schematic diagram of the proposed installation, and a tabulation of production by each well on the lease for the months of May and June, 1965. If additional information is desired, please contact this office.

Yours very truly,

S. B. Deal

S. B. Deal

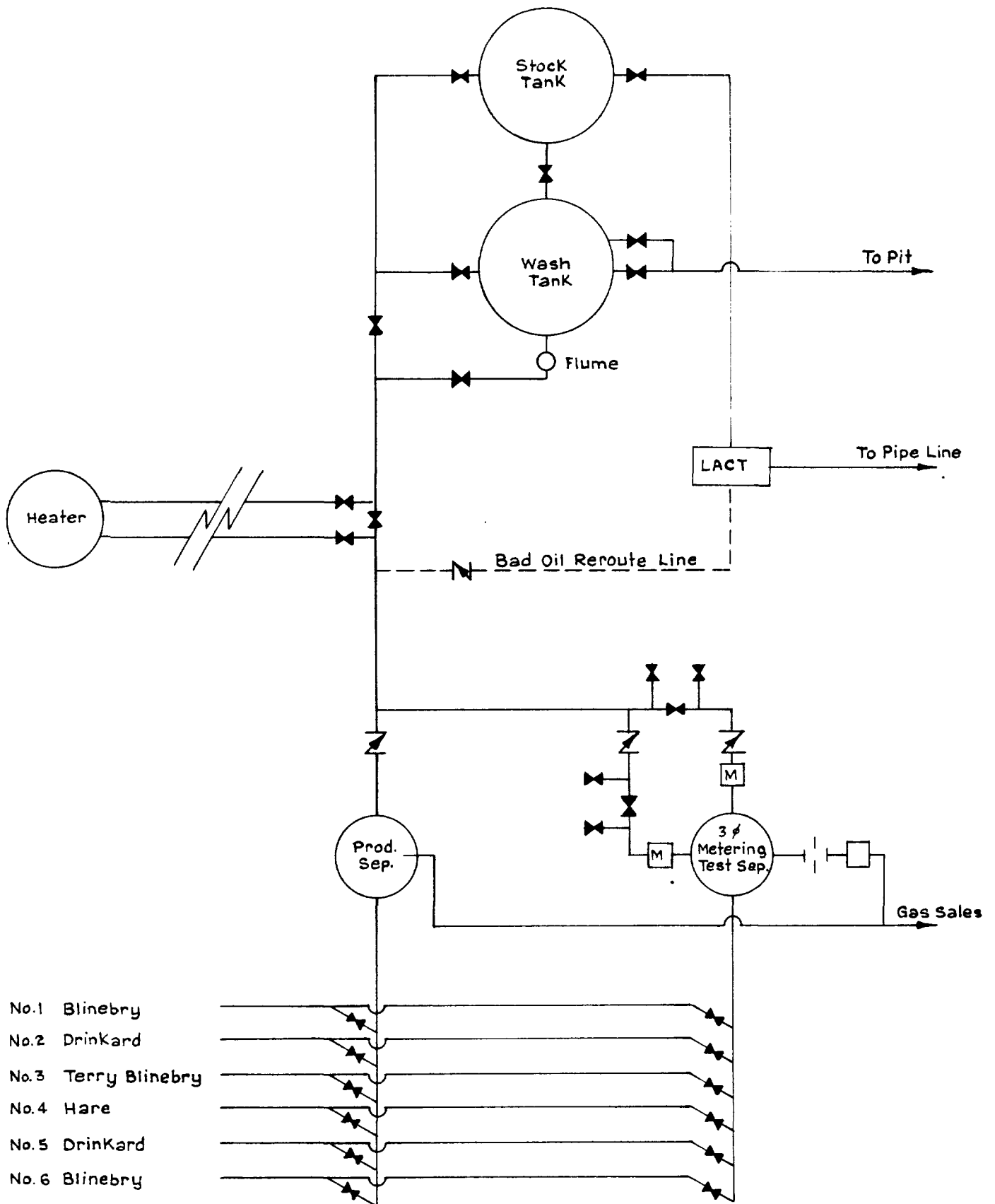
Acting Division Production Manager

Attachments

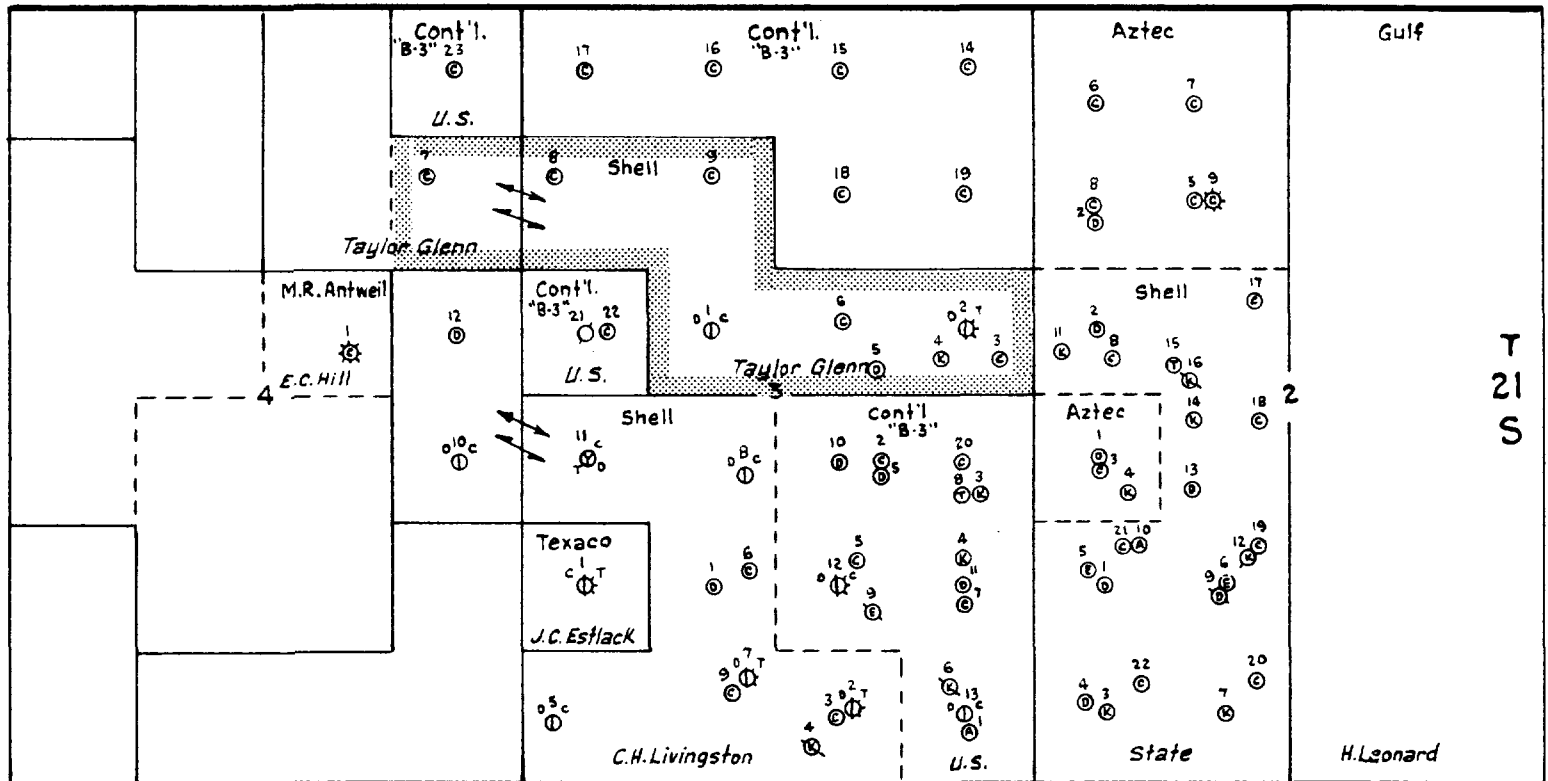
TAYLOR GLENN LEASE
BLINEBRY, TERRY BLINEBRY, DRINKARD & HARE FIELDS

<u>Well Number</u>	<u>Zone</u>	<u>May Production</u>	<u>May - Top Allowable</u>	<u>June Production</u>	<u>June - Top Allowable</u>
1	Blinebry	255	1581	240	1500
2	Drinkard	527	2108	510	1980
3	Terry Blinebry	279	1581	270	1500
4	Hare	264	2759	249	2610
5	Drinkard	713	2108	675	1980
6	Blinebry	1216	1581	1117	1500

SHELL OIL CO.
TAYLOR GLENN LEASE
BLINEBRY, TERRY BLINEBRY, DRINKARD & HARE FIELDS
Lea Co., N. Mex.



R-37-E



- © Blinebry
- Ⓣ Tubb
- Ⓟ Drinkard
- Ⓐ Abo
- Ⓚ McKee
- Ⓔ Ellenburger

SHELL OIL CO.
OWNERSHIP MAP
1" = 2000'