



**THE ATLANTIC REFINING COMPANY**  
INCORPORATED - 1870  
**PETROLEUM PRODUCTS**

April 27, 1965

DOMESTIC PRODUCING DEPARTMENT  
NEW MEXICO DISTRICT

MAILING ADDRESS  
P. O. BOX 1978  
ROSWELL, NEW MEXICO

State of New Mexico  
Oil Conservation Commission  
P. O. Box 871  
Santa Fe, New Mexico

Attention: Mr. A. L. Porter, Jr.

Re: Administrative Order  
PC-164

Dear Sir:

On October 17, 1963, we received Administrative approval to co-mingle production from the Blinebry and Tubb/Drinkard Zones under the Jal lease in Section 11, Township 25 South, Range 37 East, Lea County, New Mexico. At the time of the application, we submitted a drawing indicating the flow of the oil produced. At this time we are submitting another drawing or revised drawing to indicate the separate metering facilities and pumping facilities that will be on the lease. We have recently completed the Jal no. 3 which came in as a producer in both the Blinebry and Tubb/Drinkard Zones. Since we have another well on the lease, we are submitting this drawing of the revised setup on our Jal lease.

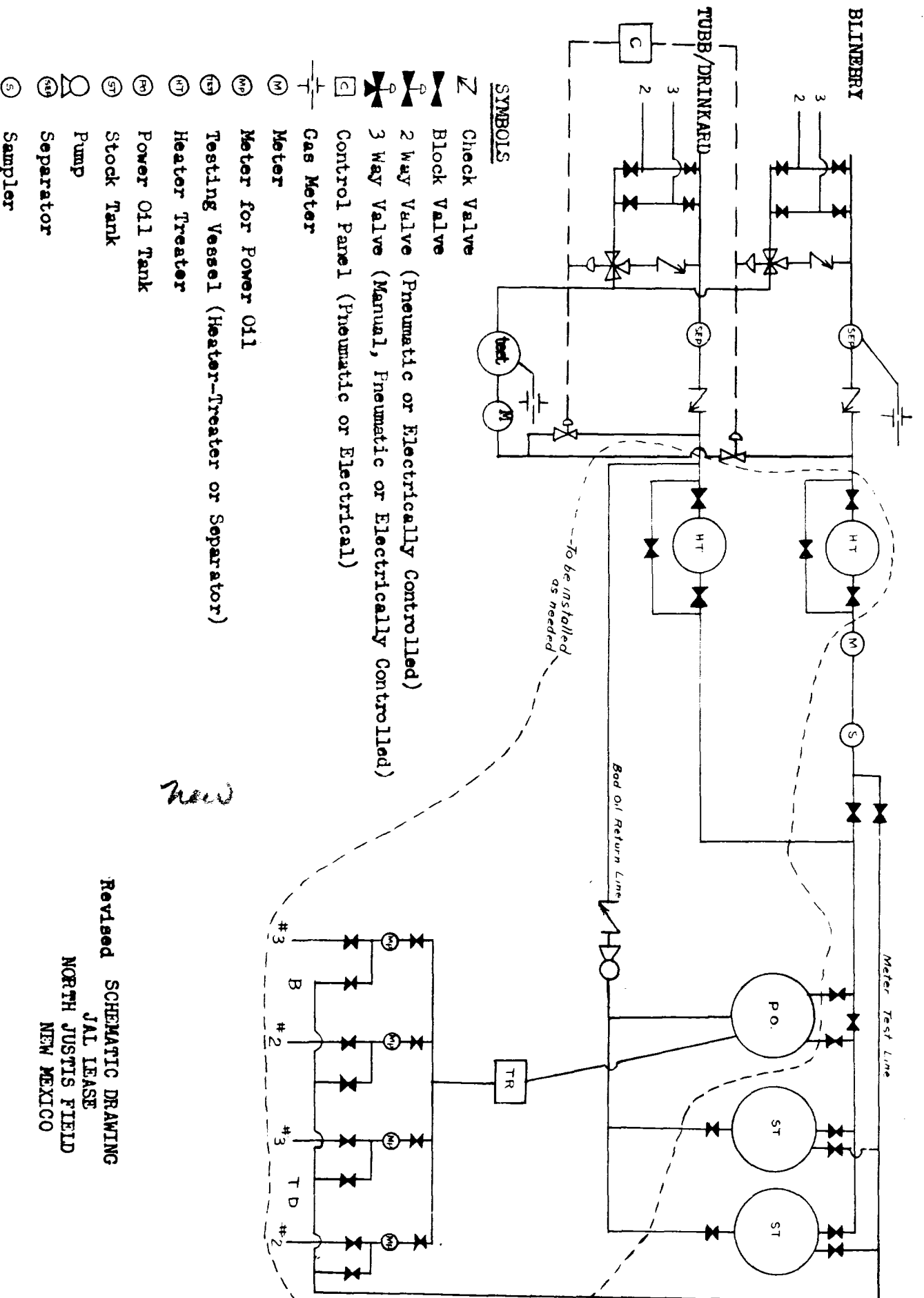
Yours very truly,

W. F. Tomlinson

WPT:jcb

Enclosures - Include the old and revised drawings

cc: Oil Conservation Commission - Hobbs  
Oil & Gas Engineering Committee - Hobbs  
United States Geological Survey - Roswell  
Mr. D. L. Langston - Hobbs  
Mr. A. B. Kloxin - Roswell



Revised SCHEMATIC DRAWING  
JAL IEASE  
NORTH JUSTIS FIELD  
NEW MEXICO