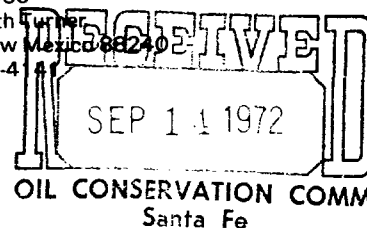




L. P. Thompson
Division Manager
Production Department
Hobbs Division

Western Hemisphere Petroleum Division
Continental Oil Company
P.O. Box 460
1001 North Turner
Hobbs, New Mexico 88240
(505) 393-4141



September 12, 1972

New Mexico Oil Conservation Commission
P. O. Box 2088
Santa Fe, New Mexico

Gentlemen:

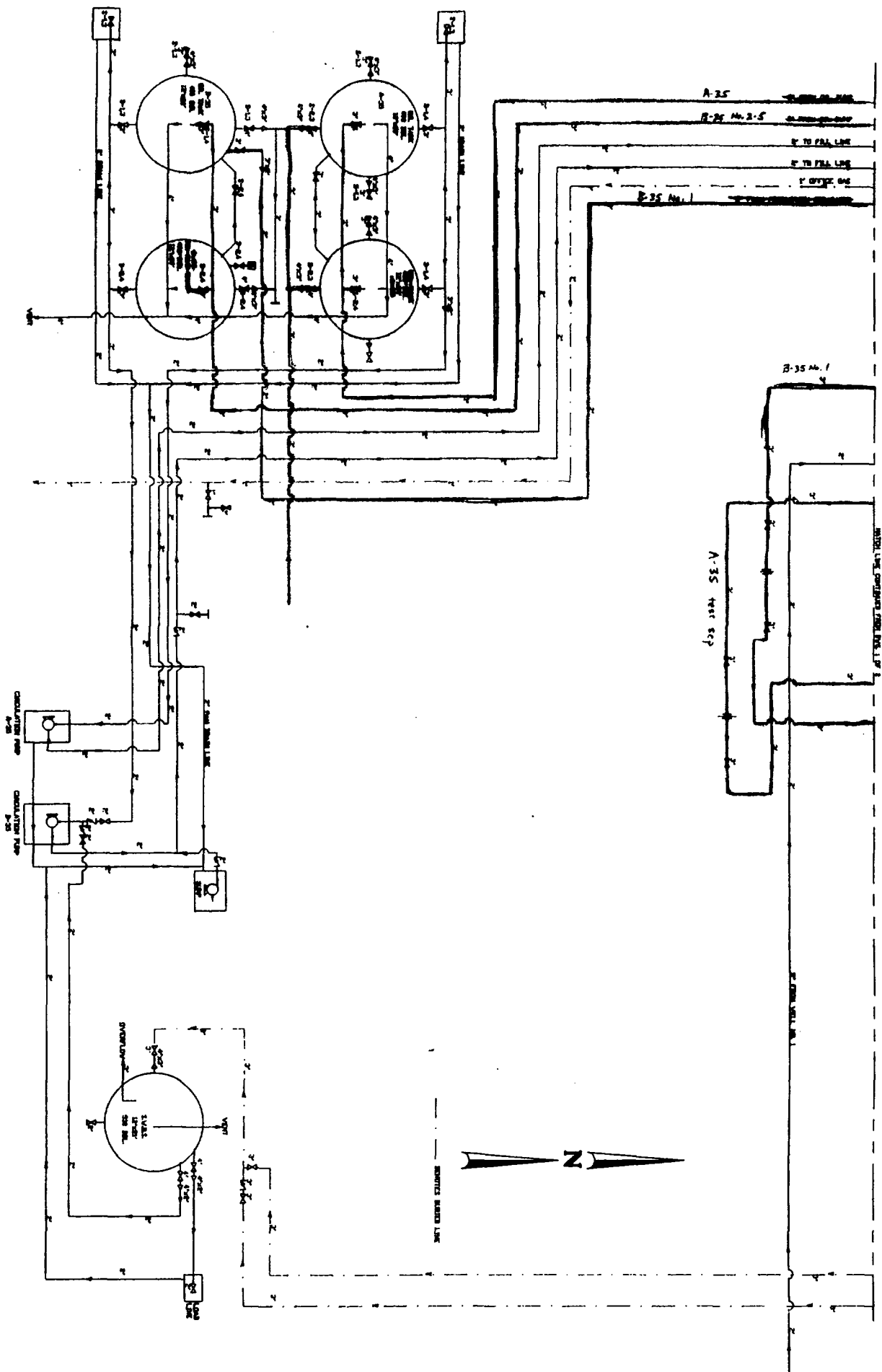
Lockhart B-35 Lease-Administrative Order PC-173

Administrative Order PC-173, amended March 5, 1968, granted permission to commingle production from Continental's Lockhart B-35 lease, Section 35, T-21S, R-37E, Lea County, New Mexico, after separately measuring production from all zones in Well No. 1 and Wantz Abo production from Well No. 2 as well as Blinebry distillate production.

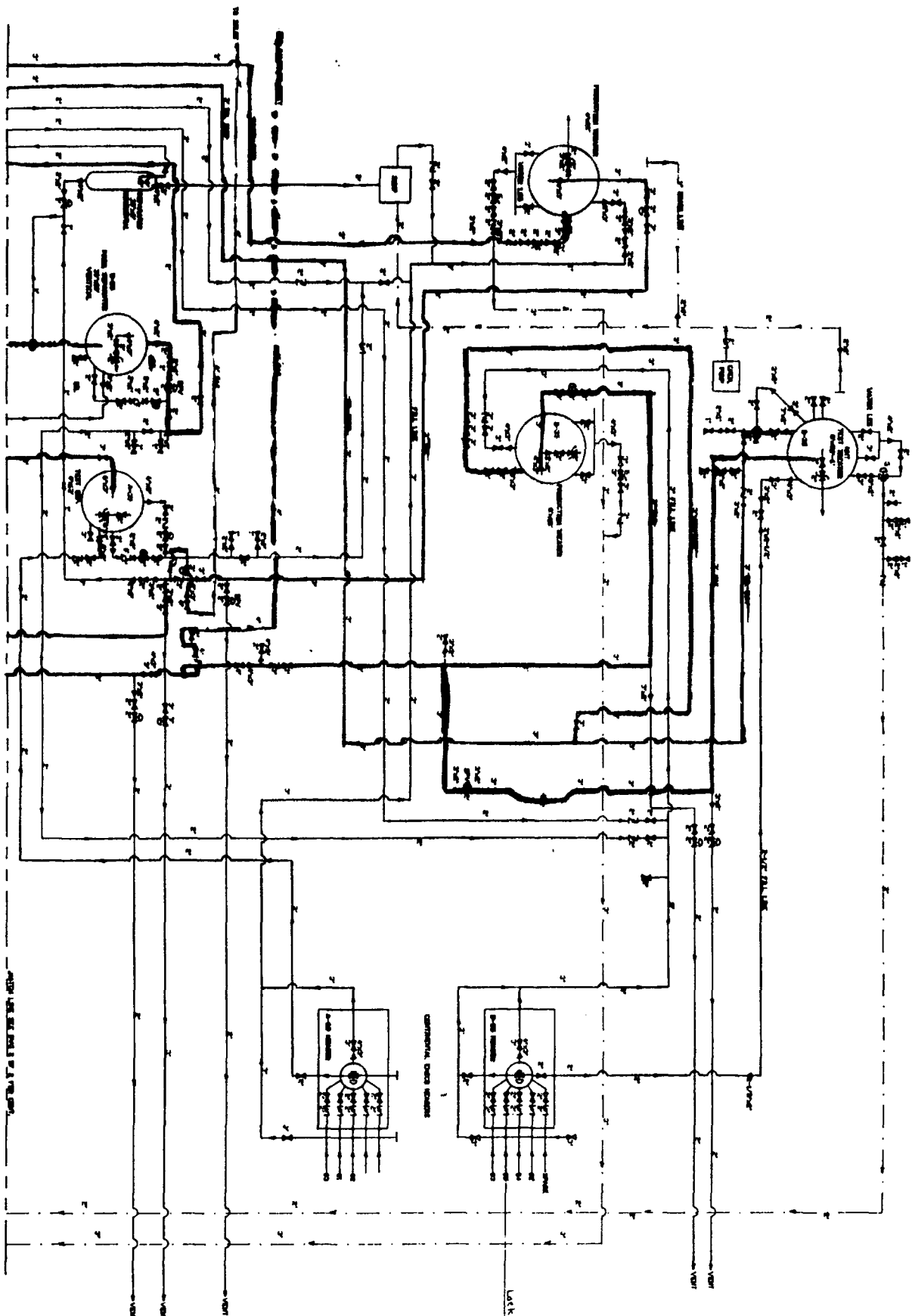
Wantz Abo production from Well No. 2 has now declined to a marginal nature. There is no Blinebry distillate production on the lease. We respectfully request Administrative Order PC-173 be amended to delete the requirement for metering Wantz Abo production. The Blinebry oil, Drinkard oil and Tubbs distillate zones from Well No. 1 will continue to be measured separately.

L. P. Thompson

cl



PIPING LEGEND GAS DIL. WATER CIRCULATING MIXTURE LINE/VESSEL VAPOR RECOVERY EXTRA		THIS FACILITY IS IN COMPLIANCE WITH CONOCO INC. MIDLAND DIVISION SITE SECURITY PLAN. PLAN LOCATED AT: CONOCO INC. OFFICE 10 DESTA DRIVE WEST MIDLAND, TEXAS 79705		VALVE LEGEND, POSITION/MODE 1. CLOSE/SALE 2. OPEN/SALE 3. CLOSED/PRODUCTION 4. OPEN/PRODUCTION																														
REVISIONS <table border="1"> <thead> <tr> <th>NO.</th> <th>DESCRIPTION</th> <th>DATE</th> <th>BY</th> <th>NO.</th> <th>DESCRIPTION</th> <th>DATE</th> <th>BY</th> </tr> </thead> <tbody> <tr> <td>1</td> <td>- LACT UNIT</td> <td>8/89</td> <td>RL</td> <td></td> <td></td> <td></td> <td></td> </tr> </tbody> </table>		NO.	DESCRIPTION	DATE	BY	NO.	DESCRIPTION	DATE	BY	1	- LACT UNIT	8/89	RL					REVISIONS <table border="1"> <thead> <tr> <th>DATE</th> <th>BY</th> <th>DESCRIPTION</th> </tr> </thead> <tbody> <tr> <td>AUGUST 28, 1986</td> <td>SHAWNA BIRD</td> <td>DRAWN BY: 1</td> </tr> <tr> <td></td> <td></td> <td>CHECKED BY: SAME</td> </tr> <tr> <td></td> <td></td> <td>APPROVED BY: SAME</td> </tr> <tr> <td></td> <td></td> <td>SCALE: NOT TO SCALE</td> </tr> </tbody> </table>		DATE	BY	DESCRIPTION	AUGUST 28, 1986	SHAWNA BIRD	DRAWN BY: 1			CHECKED BY: SAME			APPROVED BY: SAME			SCALE: NOT TO SCALE
NO.	DESCRIPTION	DATE	BY	NO.	DESCRIPTION	DATE	BY																											
1	- LACT UNIT	8/89	RL																															
DATE	BY	DESCRIPTION																																
AUGUST 28, 1986	SHAWNA BIRD	DRAWN BY: 1																																
		CHECKED BY: SAME																																
		APPROVED BY: SAME																																
		SCALE: NOT TO SCALE																																
CONOCO LOCK A-35 & B-35 TB LEA COUNTY, NEW MEXICO UNIT B-35-T21S-37E FED. LEASE NO. LC 032096A LC 032096B		MIDLAND DIVISION DRAWING NO. TB1108																																



PIPING LEGEND

- GAS
- OIL
- WATER
- CIRCULATING
- MIXTURE LINE/VESSEL
- VAPOR RECOVERY
- EXTRA

THIS FACILITY IS IN COMPLIANCE WITH CONOCO INC. MIDLAND DIVISION SITE SECURITY PLAN. PLAN LOCATED AT: CONOCO INC. OFFICE 10 DESTA DRIVE WEST MIDLAND, TEXAS 79705

VALVE LEGEND, POSITION/MODE

1. CLOSE/SALE
2. OPEN/SALE
3. CLOSED/PRODUCTION
4. OPEN/PRODUCTION

REVISIONS

NO.	DESCRIPTION	DATE	BY	NO.	DESCRIPTION	DATE	BY
1	DIFFERENCE	00/00	IN				

REVISIONS

DATE	BY	DESCRIPTION	DATE	BY
MARCH 3, 1987	SHAWNA BIRD	DRAWN BY: SHAWNA BIRD		
		CHECKED BY: SAME		
		APPROVED BY: SAME		
		SCALE: NOT TO SCALE		



MIDLAND DIVISION

LOCKHART A-35 & B-35
LEA COUNTY, NEW MEXICO
UNIT B-35-T21S-R37E
FED. LEASE NO. LC 032096A
LC 032096B
DRAWING NO. TB1107

LOCKHART G-35 N-35 R-37E