



MARATHON OIL COMPANY

February 1, 1965

P. O. Box 220
Hobbs, New Mexico

New Mexico Oil Conservation Commission
P. O. Box 2088
Santa Fe, New Mexico

Attention: Mr. A. L. Porter, Jr. Re: Administrative Order
No. PC-226 Amended

Dear Sir:

Reference is made to Administrative Order PC-226 (amended) September 28, 1964, wherein authorization was granted Marathon Oil Company to commingle production from the Vacuum Glorieta, North Vacuum Abo, Vacuum Wolfcamp and Vacuum Upper Penn Pools on the State Warn A/c 1 Lease (80 Acres), which comprises the NE/4 S4/4 and SE/4 NW/4 of Section 31, T.17S, R.35E, Vacuum Field, Lea County, New Mexico. Commingling was to be accomplished by measuring production from the Glorieta, Abo and Upper Penn Pools with meters and determining the Wolfcamp production by means of the subtraction method.

As may be noted on the attached tabulation, the daily production from the Abo and Wolfcamp zones for a 60-day period from November 17 through January 15, has declined such that neither of these two wells is capable of top allowable production.

In that this lease is fully developed with respect to Abo and Wolfcamp production (80 Acre Spacing) Marathon respectfully requests that Administrative Order PC-226 be further amended to permit the commingling of Wolfcamp and Abo production through a common heater-treater with production being allocated to each pool on the basis of individual well tests. Glorieta and Upper Penn production will continue to be metered separately and the Wolfcamp and Abo zone production determined by the subtraction method. Attached hereto is a plat of the revised commingling battery on the State Warn A/c 1 lease. Marathon Oil Company owns a 100 percent working interest in this lease.

Yours truly,

MARATHON OIL COMPANY

John R. Barber
Area Petroleum Engineer

JLF:bje
cc: NMOCC-Hobbs
A. A. Peters
File

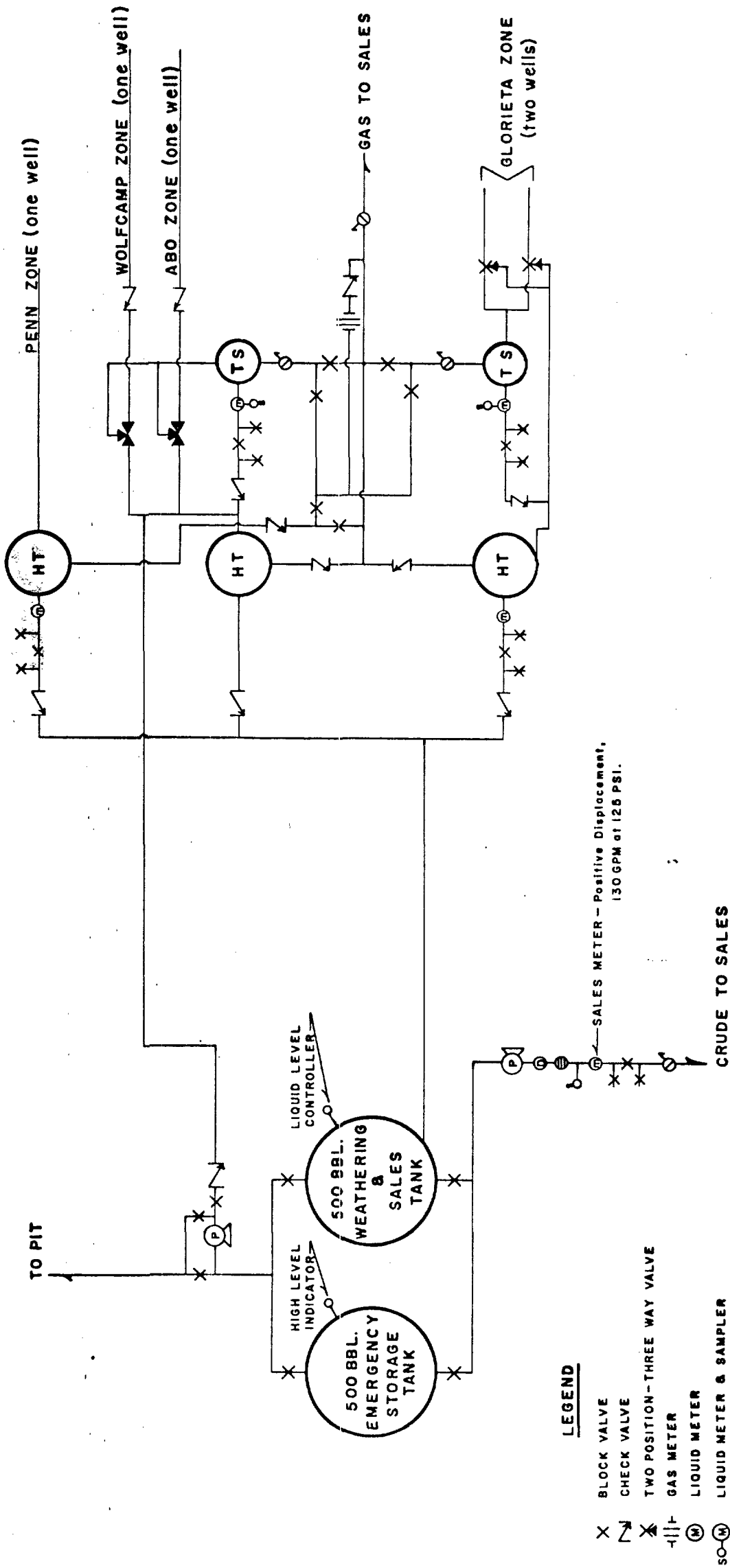
MARATHON OIL COMPANY
60 Day Production Tabulation
State Warn A/c 1 Lease
Lea County, New Mexico

<u>Date</u> <u>1964</u>	North Vacuum Abo Top Allow. <u>191 BOPD</u>	Vacuum Wolfcamp Top Allow. <u>191 BOPD</u>
11-17	160.1	138.8
11-18	153.9	154.5
11-19	149.9	105.8
11-20	154.5	94.1
11-21	157.7	106.9
11-22	5.4	97.3
11-23	158.2	110.7
11-24	144.3	6.7
11-25	129.3	147.0
11-26	119.2	106.0
11-27	135.8	95.7
11-28	122.7	108.8
11-29	125.6	93.7
11-30	131.3	77.9
12-1	125.0	152.0
12-2	133.4	82.2
12-3	146.0	78.7
12-4	134.7	93.2
12-5	140.8	93.4
12-6	134.5	96.4
12-7	133.0	81.5
12-8	136.3	106.4
12-9	141.5	76.3
12-10	141.0	115.1
12-11	138.9	87.8
12-12	132.1	75.5
12-13	128.5	94.5
12-14	134.9	72.9
12-15	126.2	91.2
12-16	138.8	155.5
12-17	117.4	146.8
12-18	129.6	122.2
12-19	118.6	104.5
12-20	130.8	60.4
12-21	120.4	15.9
12-22	127.5	5.9
12-23	123.3	6.8
12-24	123.8	127.7
12-25	121.6	115.4

60 Day Production Tabulation
State Warn A/c 1 Lease

Page 2

<u>Date</u>	North Vacuum Abo Top Allow. <u>191 BOPD</u>	Vacuum Wolfcamp Top Allow. <u>191 BOPD</u>
<u>1964</u>		
12-27	123.8	93.7
12-28	116.9	0
12-29	132.7	0
12-30	129.8	123.4
12-31	128.2	122.0
<u>1965</u>		
1-1	127.8	101.0
1-2	126.8	5.4
1-3	130.4	0
1-4	122.7	97.5
1-5	124.2	141.8
1-6	125.3	136.2
1-7	123.8	101.8
1-8	121.4	1.6
1-9	120.7	0
1-10	123.5	6.9
1-11	129.1	6.6
1-12	112.7	2.7
1-13	120.2	163.0
1-14	122.1	139.3
1-15	116.0	143.9



LEGEND

- X BLOCK VALVE
- W CHECK VALVE
- X TWO POSITION-THREE WAY VALVE
- +||- GAS METER
- (M) LIQUID METER
- SO-M LIQUID METER & SAMPLER
- 8 SAMPLER
- 6 BACK PRESSURE VALVE
- 6 DEAERATOR
- 6 STRAINER
- P PUMP
- PROVER OR TEST CONNECTIONS
- TS TEST SEPARATOR
- PS PRODUCTION SEPARATOR
- HT HEATER TREATER
- THREE WAY VALVE

MARATHON OIL COMPANY
 "PROPOSED COMMINGLING AND AUTOMATIC CUSTODY TRANSFER BATTERY"
 STATE WARM A/C I LEASE
 LEA COUNTY, NEW MEXICO

SCALE: NONE

MAY 14, 1964
 REVISED 2-1-65