



SHELL OIL COMPANY

P. O. Box 1858
Roswell, New Mexico

June 21, 1965

Subject: Application for Exception
to N.M.O.C.C. Statewide
Rule 303(a) for Shell
Rinewalt Lease

New Mexico Oil Conservation Commission (3)
P. O. Box 871
Santa Fe, New Mexico

Gentlemen:

Shell Oil Company hereby makes application for Administrative Approval to commingle before marketing, the Wantz Abo and Blinebry crude oil production on our Rinewalt Lease, comprising the E/2 of the NW/4 of Section 4, T-22-S, R-37-E, Lea County, New Mexico.

We propose to commingle the two zones without separately metering the production since both zones are marginal (no wells capable of top allowable production). Allocation of production for each zone will be based on monthly well tests. We have two wells producing from the Blinebry oil pool and one well producing from the Wantz Abo pool. Although the Wantz Abo well, Rinewalt No. 4, exceeded top allowable production on the OPT test, its productive capacity has been steadily declining as can be seen on the attached tabulation. It is now incapable of top allowable production. The two Blinebry wells are obviously marginal.

The Rinewalt Lease produces about 55 barrels per day of 37.8° API gravity crude from the Wantz Abo pool, and 23 barrels per day of 37.7° API gravity crude from the Blinebry pool. The commingled gravity will be about 37.8° API. No change in the actual commercial value of the crude is anticipated as a result of commingling.

The proposed commingling installation will be operated in accordance with the Commission "Manual for the Installation and Operation of Commingling Facilities". If any of the wells become capable of top allowable production in the future, the Commission will be notified immediately. Attached for your consideration is a lease plat, schematic diagram of the proposed installation, and a tabulation of recent production by each well. If additional information is desired, please contact this office.

Yours very truly,

S. B. Deal

Acting Division Production Manager

Attachments

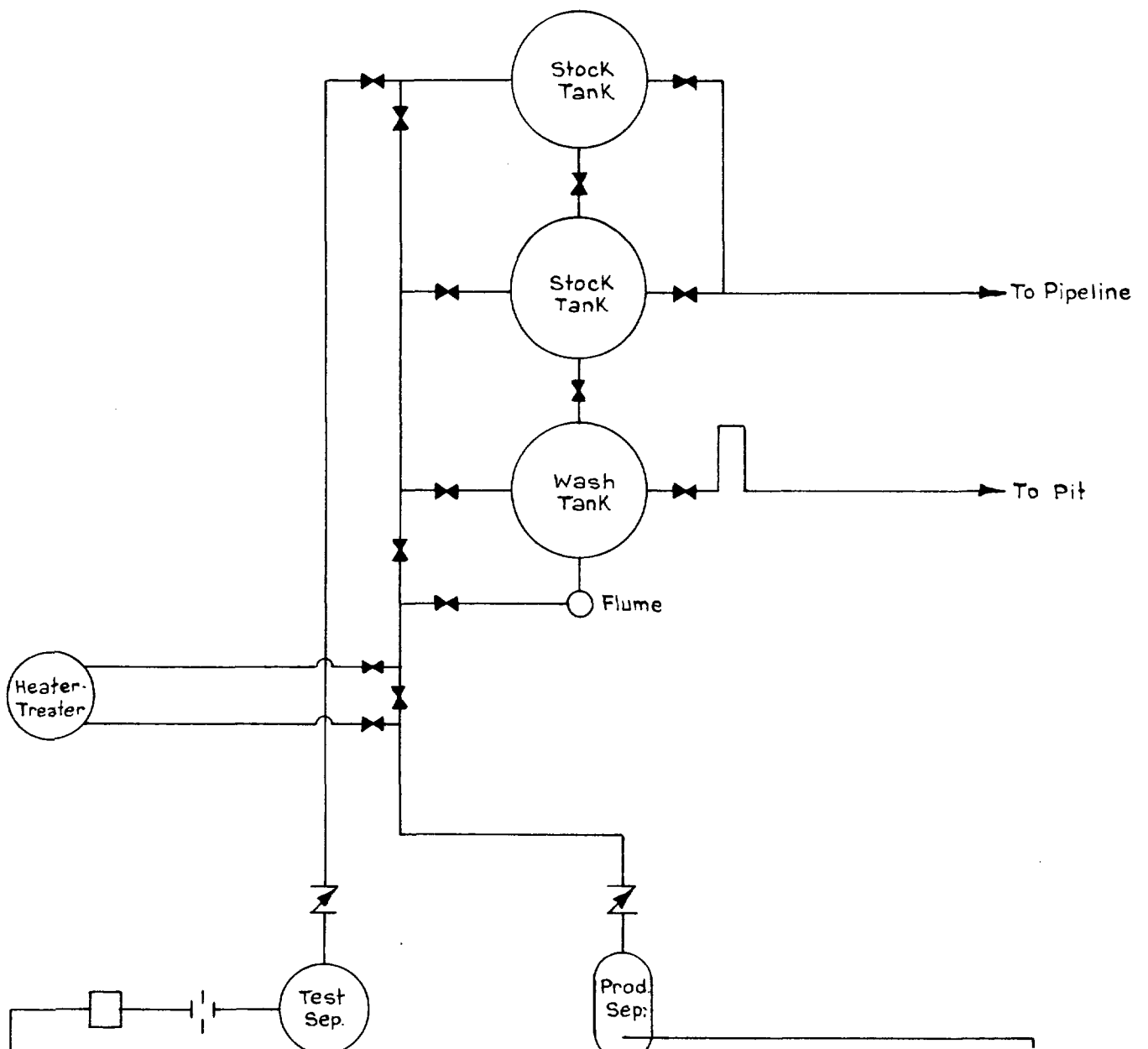
RINEWALT LEASE
WANTZ ABO AND BLINEBRY FIELDS

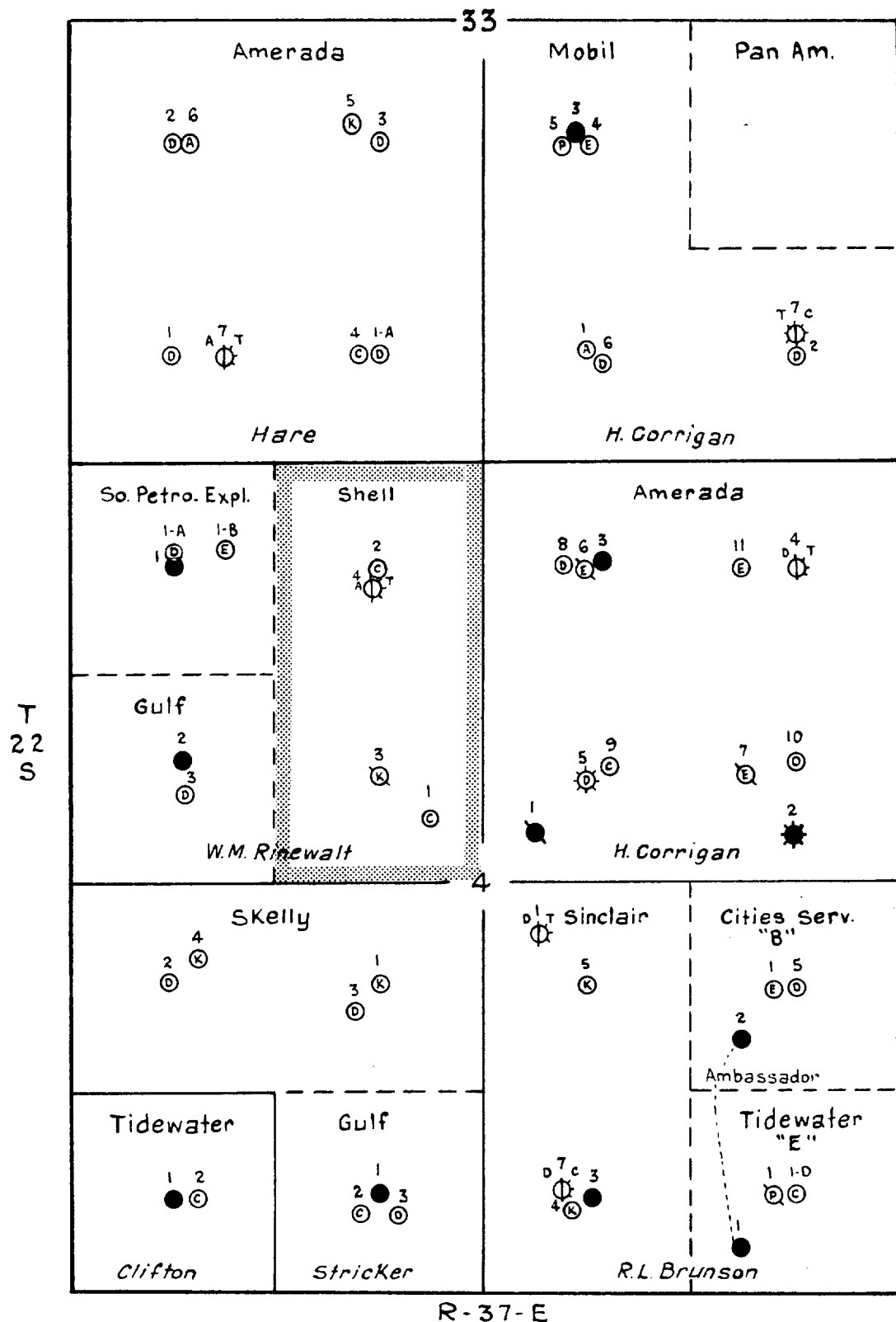
<u>WELL NUMBER</u>	<u>ZONE</u>	<u>DATE TESTED</u>	<u>PRODUCTION IN BOPD</u>	<u>TOP ALLOWABLE IN BOPD</u>
4	Wantz Abo	6/16/65	66	87
4	Wantz Abo	6/17/65	52	87
4	Wantz Abo	6/18/65	59	87
4	Wantz Abo	6/19/65	54	87
4	Wantz Abo	6/20/65	48	87
2	Blinebry	5/18/65	17*	51
2	Blinebry	6/7/65	15	50

*OPT test

<u>WELL NUMBER</u>	<u>ZONE</u>	<u>APRIL PRODUCTION</u>	<u>APRIL-TOP ALLOWABLE</u>	<u>MAY PRODUCTION</u>	<u>MAY-TOP ALLOWABLE</u>
1	Blinebry	264	1530	251	1581

SHELL OIL CO.
PROPOSED COMMINGLING
WANTZ ABO & BLINEBRY POOLS
RINEWALT LEASE
Lea Co., N. Mex.





LEGEND

- Penrose SKelly
- (D) Paddock
- (C) Blinbry
- (T) Tubb
- (D) Drinkard
- (A) Abo
- (K) McKee
- (E) Ellenburger

SHELL OIL CO.
OWNERSHIP MAP
1" = 1000'