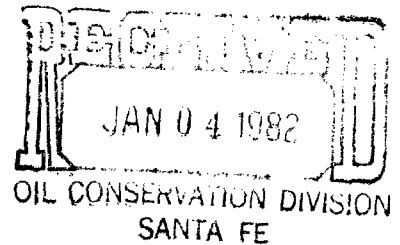




Mark K. Mosley
Division Manager
Production Department
Hobbs Division
North American Production

Conoco Inc.
P.O. Box 460
726 E. Michigan
Hobbs, NM 88240
(505) 393-4141



December 29, 1981

New Mexico Oil Conservation Division
Department of Energy and Minerals
State of New Mexico
P. O. Box 2088
Santa Fe, NM 87501

Attention: Mr. Joe D. Ramey

Gentlemen:

*Amend PLC-58
file copy in
case 5795*

Application for Permission to Surface Commingle Production from the
Northeast Haynes No. 8E, Unit L, Section 15, T-24N, R-5W, Rio Arriba
County, New Mexico.

Conoco Inc. requests administrative approval under the provisions of Rule 303-B to surface commingle Basin Dakota production from Well No. 8E into a common tank battery located in the SE/4 SE/4 of Section 16, T-24N, R-5W, Rio Arriba County. Commission Order No. R-5205A gave approval to commingle Otero Gallup and Basin Dakota production from Wells Nos. 1-8 at this facility. Commission Order PLC-58 gave approval to commingle Basin Dakota production from Well No. 4E at this facility.

Ownership and working interest for all zones is common. Quality of the crude and condensate is virtually identical and commingling will not reduce the commercial value.

The Northeast Haynes No. 8E is currently producing an average of 1 barrel per day of 45° gravity crude valued at \$35.00 per barrel. The Otero Gallup zone for the lease produces approximately 14 barrels per day of 46.4° gravity crude with a value of \$35.00 per barrel.

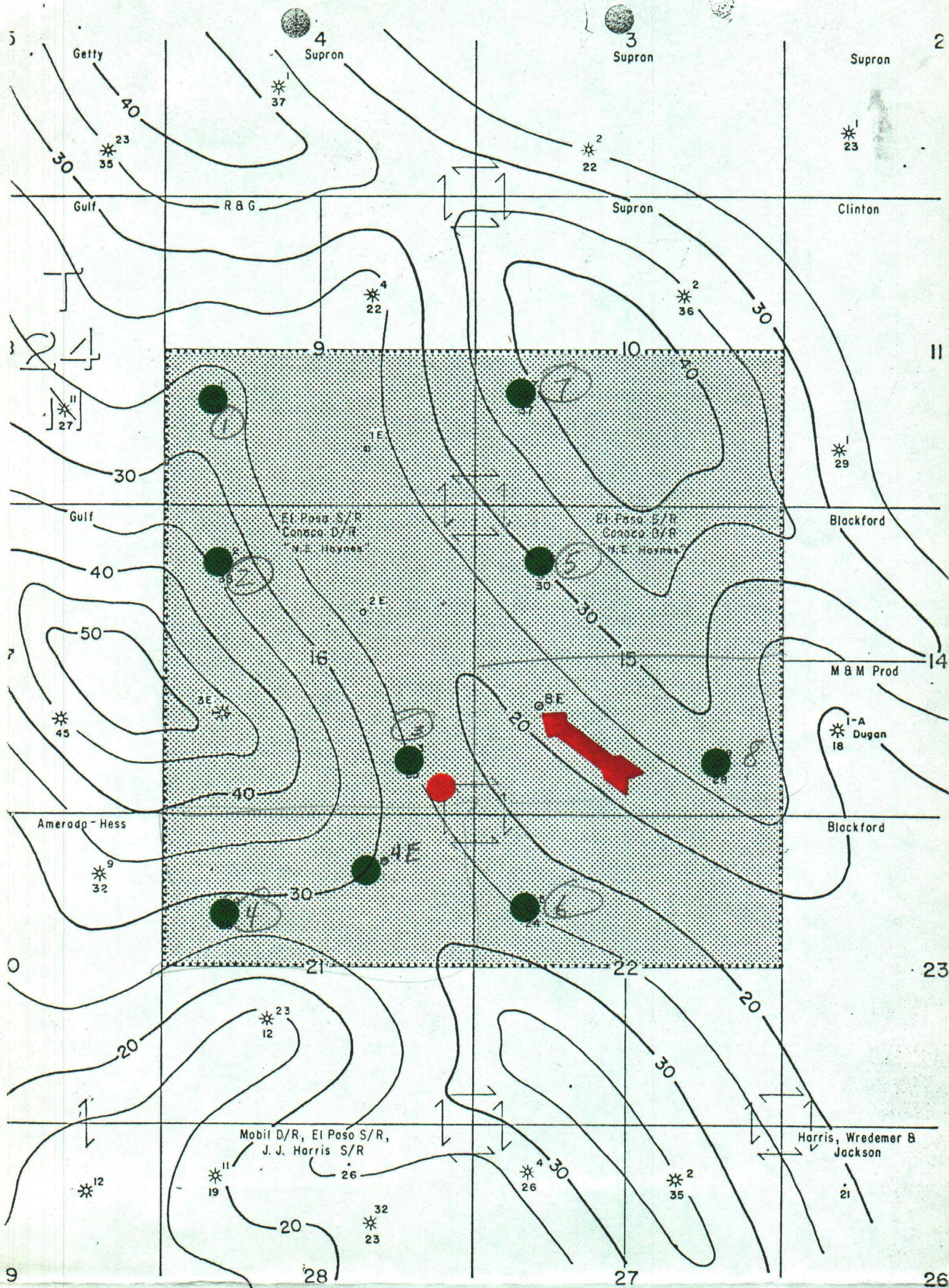
A lease and battery plat are attached for your review and file. The production will be allocated on the basis of well tests.

Yours very truly,

M K Mosley


RLM:jlj
Attachment

cc: USGS
Drawer 600
Farmington, NM 87401



R 5 W

- - NE Haynes Battery
- - Wells producing oil into battery



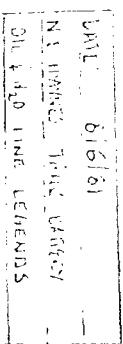
PRODUCTION DEPARTMENT HOBBS DIVISION

N. E. HAYNES
RIO ARRIBA COUNTY, NEW MEXICO
ISOPACH OF NET SS
DAKOTA FM, ZONE J2
CI=5
SCALE

EGS 5-80

0 1000 2000 11m

○ LOCATION	◇ DRY HOLE	⊕ SALT WATER
● OIL WELL	▲ INJECTION WELL	⊖ DISPOSAL WELL
* GAS WELL	✱ ABANDONED WELL	• DEEPER WELL
	✱ SHUT-IN WELL	□ ZONE UNTESTED



○
CINQUE-POINCE-LOVE.