

MERIDIAN OIL

OIL CONSERVATION DIVISION
SANTA FE, N.M.

1992 FEB 10 AM 9 27

February 10, 1992

Mr. Floyd O. Prando, Director
State of New Mexico
Office of the Commissioner of *Public Lands*
Oil, Gas and Minerals Division
P. O. Box 1148
Santa Fe, NM 87504-1148

RE: AMEND COMMINGLING ORDER PC-757
EXCEPTION TO SWR 303-B SURFACE COMMINGLING
TO EXCEPTION TO SWR 309-B LEASE COMMINGLING
ALSO, REQUEST OFF LEASE STORAGE, RULE 309C
FOR THE PERCHA 15 STATE LEASE (V8-161)
TO THE STATE "16" BATTERY LOCATED IN
J, SEC. 16, T18S, R33E, LEA COUNTY, NM

Dear Mr. Prando:

LEASE NAME: STATE "16" LEASE (LG-4087)
DESCRIPTION: S/2 SEC. 16, T18S, R33E, LEA COUNTY, NM
BATTERY LOCATED IN UNIT LETTER J

LEASE NAME: PERCHA 15 STATE LEASE (V8-161)
DESCRIPTION: S/2 SW/4 & NE/4 SW/4 SEC. 15,
T18S, R33E, LEA COUNTY, NM

Meridian requests approval to surface commingle production from the West Corbin Delaware, South Corbin Wolfcamp and the South Corbin Bone Spring Pools for the State "16" and Percha 15 State Leases in a common tank battery located on the State "16" Lease in Unit Letter J. A \$30.00 check is enclosed to cover application fee.

A Plat is attached showing leases, wells and location of battery.

The following is the list of wells on these leases by field:

WEST CORBIN DELAWARE POOL
STATE "16" LEASE (LG-4087)
WELL NO. & UNIT LETTER

PRODUCTION

#3, L	2 BO, 1 MCF
#4, M	16 BO, 85 MCF
#5, N	35 BO, 80 MCF
#8, P	40 BO, 120 MCF

PERCHA 15 STATE LEASE (V8-161)

#1, M	10 BO, - MCF
-------	--------------

SOUTH CORBIN WOLFCAMP POOL
STATE "16" LEASE (LG-4087)

#1, J	72 BO, 103 MCF
#2, N	11 BO, 90 MCF
#7, P	270 BO, 500 MCF

SOUTH CORBIN BONE SPRING
PERCHA 15 STATE LEASE (V8-161)

#2Y, N	10 BO, - MCF
--------	--------------

It would not be economic to set a LACT on the Percha 15 State Lease for 20 BOPD.

A schematic of the system is enclosed.

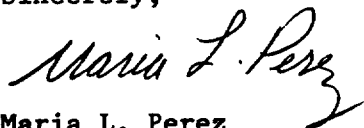
Meridian owns 100% working interest on both these leases.

Production from each lease and pool will be determined by well test.

Meridian, also, requests approval for off lease storage of production from the Percha 15 State lease to the State "16" Lease, battery located in Unit Letter J, Sec. 16, T18S, R33E, Lea County, NM.


Should you require additional information, please contact me A/C915-688-6906.

Sincerely,



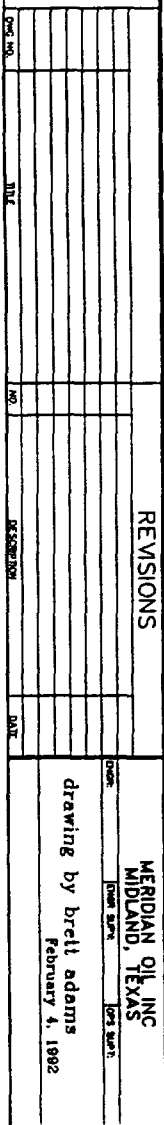
Maria L. Perez
Prod. Assistant

MLP/sm

xc  Mr. David Catanach
Oil Conservation Commission
P. O. Box 2088
Santa Fe, NM 87504

Texas-New Mexico Pipe Line Co.
P. O. Box 2528
Hobbs, NM 88241-2528

Well Files
Don McBee
Land (2)
Jt. Interest
Resv. Engineer
Prod. Engineer
Brett Adams
Richard Atchley
Reading File
Maria Perez



Unit J Sec.16 T-18-S R-33-E
Lea County, New Mexico

Lea County, New Mexico

MERIDIAN OIL, INC.
 MIDLAND, TEXAS
 drawing by brell adams
 February 4, 1982

