

GMS
NSL and
NSP issue 30 days
from date com. is notified
that required effects have been
notified by the applicant.
issue 6-11-69

MILLARD DECK OIL COMPANY

OIL OPERATOR

P. O. BOX 409

EUNICE, NEW MEXICO 88231

TELEPHONE (505) 394-2249

April 25, 1969

APR 29 AM 8 09

Oil Conservation Commission
State of New Mexico
Box 2088
Santa Fe, New Mexico 87501

Attention: Mr. A. L. Porter, Jr.

Re: Application of Millard Deck Oil Company
For a Non-Standard Location and Non-
Standard Proration Unit for its Shell State #2
In the Jalmat Yates Seven Rivers Gas Field

Gentlemen:

As required under the provisions set forth by Rule 104-D of the Oil Conservation Commission Rules and Regulations, Millard Deck Oil Company respectfully requests that an Examiner Hearing date be set for an application for a non-standard location and non-standard proration unit for its Shell State No. 2 located 1980' FWL and 2310' FNL of Section 36, Township 24 South, Range 36 East, Lea County, New Mexico.

The Shell State No. 2 was drilled to a total depth of 3428' with 4-1/2" casing set at total depth. Several unsuccessful attempts were made to make a commercial oil producer in the Langlie Mattix-Queen and the Jalmat-Seven Rivers formations. Finally, gas production was obtained in the upper portion of the Yates formation.

In order to obtain an allowable favorable to the production of gas from this well in the Jalmat Gas field, it is necessary to dedicate an additional 120 acres to this well. Enclosed is Form C-102 showing the location of the Shell State No. 2 and the proposed acreage to be dedicated to this proration unit. Also enclosed is Form C-105 which will furnish well completion data and a Gamma Ray-Neutron log for the well.

Page 2
OCC
4/25/69

This application is to seek approval of the non-standard location and non-standard production unit for the Shell State No. 2 in order that an appropriate gas allowable can be established. It is believed that this will serve the best interests of the Oil Conservation Commission in that it will conserve the natural resources of the State, provide royalty revenue for the State, and provide severance tax revenue for the State. In addition, it will protect the correlative rights of this operation and off-setting operators.

Yours very truly,

A handwritten signature in cursive script, appearing to read "Millard Deck".

MILLARD DECK

Enclosures

WELL LOCATION AND ACREAGE DEDICATION PLAT

Supersedes C-128
Effective 1-1-65

All distances must be from the outer boundaries of the Section

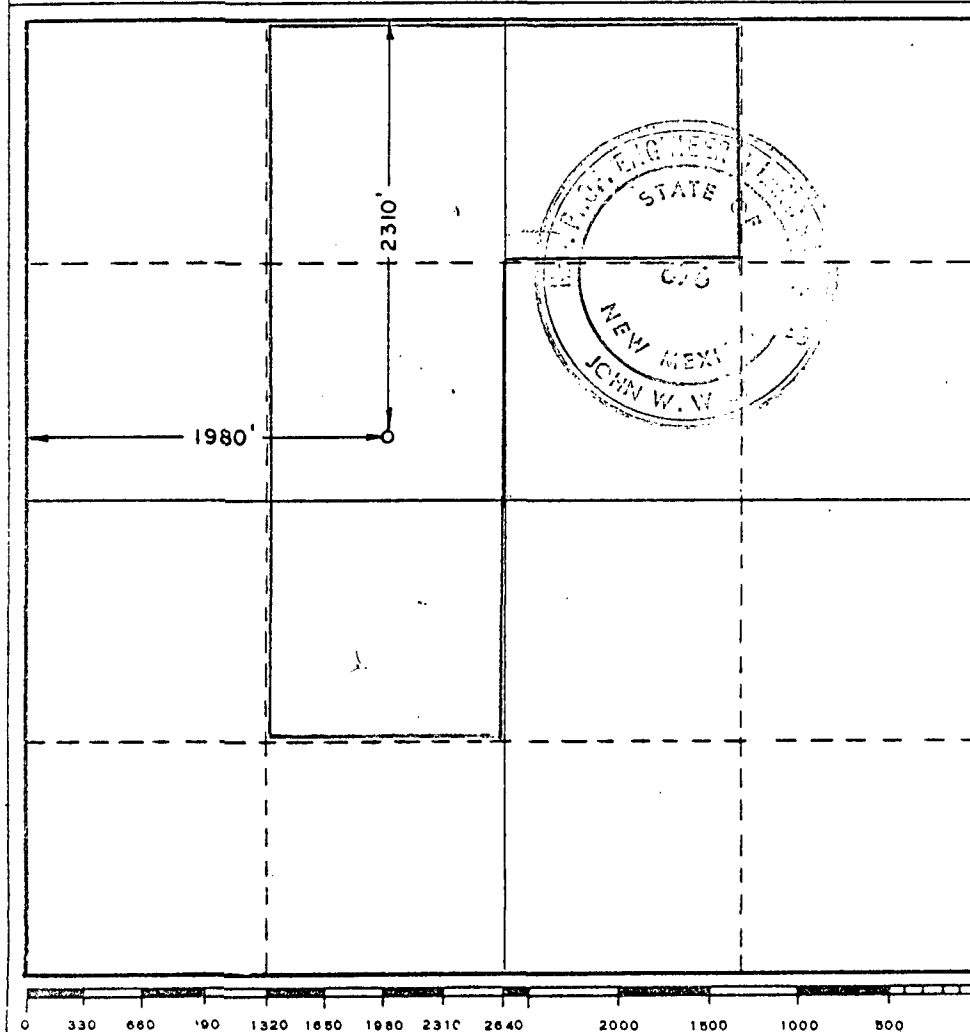
Operator MILLARD DECK			Lease SHELL STATE		Well No. 2
Unit Letter F	Section 36	Township 24 SOUTH	Range 36 EAST	County LEA	
Actual Footage Location of Well: 2310 feet from the NORTH line and 1980 feet from the WEST line					
Ground Level Elev. 3267.3	Producing Formation Yates	Pool Jalmat Yates Seven Rivers		Dedicated Acreage: 160 Acres	

1. Outline the acreage dedicated to the subject well by colored pencil or hachure marks on the plat below.
2. If more than one lease is dedicated to the well, outline each and identify the ownership thereof (both as to working interest and royalty).
3. If more than one lease of different ownership is dedicated to the well, have the interests of all owners been consolidated by communitization, unitization, force-pooling, etc?

☐ Yes ☐ No If answer is "yes," type of consolidation _____

If answer is "no," list the owners and tract descriptions which have actually been consolidated. (Use reverse side of this form if necessary.) _____

No allowable will be assigned to the well until all interests have been consolidated (by communitization, unitization, forced-pooling, or otherwise) or until a non-standard unit, eliminating such interests, has been approved by the Commission.



CERTIFICATION

I hereby certify that the information contained herein is true and complete to the best of my knowledge and belief.

Name

Owner - Operator

Position

Millard Deck Oil Co.

Company

4/28/69

Date

I hereby certify that the well location shown on this plat was plotted from field notes of actual surveys made by me or under my supervision, and that the same is true and correct to the best of my knowledge and belief.

Date Surveyed

SEPTEMBER 17, 1968

Registered Professional Engineer and/or Land Surveyor

John W. West

Certificate No.

676

MILLARD DECK OIL COMPANY

OIL OPERATOR

P. O. BOX 409

EUNICE, NEW MEXICO 88231

TELEPHONE (505) 394-2249

May 7, 1969

State of New Mexico
Oil Conservation Commission
P. O. Box 2088
Santa Fe, New Mexico 87501

Attention: Mr. A. L. Porter, Jr.

Re: Application of Millard Deck
Oil Company for a Non-Standard
Location and Non-Standard
Proration Unit for the Shell
State #2 in the Jalmat Yates
Seven Rivers Gas Field.

Gentlemen:

Enclosed for your file is a copy of a letter sent to Shell Oil Company who is the only other operator on the same lease and a copy of letters sent to Humble Oil & Refining Company, Cities Service Oil Company, and Texas Pacific Oil Company, who are the only direct or diagonal offset operators to the subject lease.

Waivers of objections were requested. If they are obtained they will be forwarded to you for your file.

The above letters were sent via certified mail. Receipts for each letter sent are included.

We understand that unless an objection is raised you will be able to approve this application administratively in thirty days. If waivers are received, you can approve the application at an earlier date.

Handwritten:
DMA-434
NSP-808
6-11-69
issue

Vertical stamp:
MAY 12 1969

State of New Mexico
Page 2
May 7, 1969

Your cooperation in getting this lease on production is
sincerely appreciated.

Yours very truly,

Millard Deck

MILLARD DECK

Enclosures

May 3, 1969

MAY 12 AM 8 42

YMN
NSP
NSP

Cities Service Oil Company
P. O. Box 69
Hobbs, New Mexico 88240

Gentlemen:

Millard Deck Oil Company completed in January, 1969 their Shell State No. 2 located in Unit F, Section 36, Township 24 South, Range 36 East. After several attempts to make a commercial oil producer, it was completed as a Jalmat Yates-Seven Rivers gas well from perforations between 2701' to 2721'.

Acreage to be dedicated to the above lease will include 160 acres located in the NE/4-SW/4, SE/4-NW/4, NE/4-NW/4, and the NW/4-NE/4 of Section 36, T-24-S, R-36-E, as outlined on the attached Well Location and Acreage Dedication Plat.

An application has been submitted to the New Mexico State Oil Conservation Commission seeking administrative approval for this non-standard location and non-standard proration unit as a Jalmat gas well. A copy of this application has also been included for your information.

You are requested to waive objection to approval by the Oil Conservation Commission of this application. If you will so waive, please execute the statement below and return one copy in the enclosed envelope.

Yours very truly,

Millard Deck

MILLARD DECK

Enclosures

cc: N. M. Oil Conservation Commission

On behalf of CITIES SERVICE OIL COMPANY the undersigned hereby waives any and all objections to the approval of the application of Millard Deck Oil Company for a non-standard location and non-standard proration unit as above described.

May 3, 1969

Shell Oil Company
P. O. Box 1509
Midland, Texas 79701

Gentlemen:

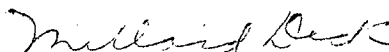
Millard Deck Oil Company completed in January, 1969 their Shell State No. 2 located in Unit F, Section 36, Township 24 South, Range 36 East. After several attempts to make a commercial oil producer, it was completed as a Jalmat Yates-Seven Rivers gas well from perforations between 2701' to 2721'.

Acreage to be dedicated to the above lease will include 160 acres located in the NE/4-SW/4, SE/4-NW/4, NE/4-NW/4, and the NW/4-NE/4 of Section 36, T-22-S, R-36-E, as outlined on the attached Well Location and Acreage Dedication Plat.

An application has been submitted to the New Mexico State Oil Conservation Commission seeking administrative approval for this non-standard location and non-standard proration unit as a Jalmat gas well. A copy of this application has also been included for your information.

You are requested to waive objection to approval by the Oil Conservation Commission of this application. If you will so waive, please execute the statement below and return one copy in the enclosed envelope.

Yours very truly,



MILLARD DECK

Enclosures

cc: N. M. Oil Conservation Commission

On behalf of SHELL OIL COMPANY the undersigned hereby waives any and all objections to the approval of the application of Millard Deck Oil Company for a non-standard location and non-standard proration unit as above described.

May 3, 1969

Texas Pacific Oil Company
P. O. Box 1069
Hobbs, New Mexico 88240

Gentlemen:

Millard Deck Oil Company completed in January, 1969 their Shell State No. 2 located in Unit F, Section 36, Township 24 South, Range 36 East. After several attempts to make a commercial oil producer, it was completed as a Jalmat Yates-Seven Rivers gas well from perforations between 2701' to 2721'.

Acreage to be dedicated to the above lease will include 160 acres located in the NE/4-SW/4, SE/4-NW/4, NE/4-NW/4, and the NW/4-NE/4 of Section 36, T-22-S, R-36-E, as outlined on the attached Well Location and Acreage Dedication Plat.

An application has been submitted to the New Mexico State Oil Conservation Commission seeking administrative approval for this non-standard location and non-standard proration unit as a Jalmat gas well. A copy of this application has also been included for your information.

You are requested to waive objection to approval by the Oil Conservation Commission of this application. If you will so waive, please execute the statement below and return one copy in the enclosed envelope.

Yours very truly,

Millard Deck

MILLARD DECK

Enclosures

cc: N. M. Oil Conservation Commission

On behalf of TEXAS PACIFIC OIL COMPANY the undersigned hereby waives any and all objections to the approval of the application of Millard Deck Oil Company for a non-standard location and non-standard proration unit as above described.

May 3, 1969

Humble Oil & Refining Company
Box 1600
Midland, Texas 79701

Gentlemen:

Millard Deck Oil Company completed in January, 1969 their Shell State No. 2 located in Unit F, Section 36, Township 24 South, Range 36 East. After several attempts to make a commercial oil producer, it was completed as a Jalmat Yates-Seven Rivers gas well from perforations between 2701' to 2721'.

Acreage to be dedicated to the above lease will include 160 acres located in the NE/4-SW/4, SE/4-NW/4, NE/4-NW/4, and the NW/4-NE/4 of Section 36, T-22-S, R-36-E, as outlined on the attached Well Location and Acreage Dedication Plat.

An application has been submitted to the New Mexico State Oil Conservation Commission seeking administrative approval for this non-standard location and non-standard proration unit as a Jalmat gas well. A copy of this application has also been included for your information.

You are requested to waive objection to approval by the Oil Conservation Commission of this application. If you will so waive, please execute the statement below and return one copy in the enclosed envelope.

Yours very truly,

Millard Deck

MILLARD DECK

Enclosures

cc: N. M. Oil Conservation Commission

On behalf of HUMBLE OIL & REFINING COMPANY the undersigned hereby waives any and all objections to the approval of the application of Millard Deck Oil Company for a non-standard location and non-standard proration unit as above described.

OIL CONSERVATION COMMISSION

P. O. BOX 2088

SANTA FE, NEW MEXICO 87501

June 11, 1969

Application filed in MSP-809
Millard Deck Oil Company
P. O. Box 409
Eunice, New Mexico

Attention: Mr. Millard Deck

Administrative Order NSL-434

Gentlemen:

Reference is made to your application for approval of an unorthodox well location for your Shell State Well No. 2, located 2310 feet from the North line and 1980 feet from the West line of Section 36, Township 24 South, Range 36 East, NMPM, Jalmat Gas Pool, Lea County, New Mexico.

By authority granted me under the provisions of Order No. R-1670, as amended, the above-described unorthodox well location is hereby approved.

Very truly yours,

A. L. PORTER, Jr.
Secretary-Director

ALP/GMH/esr

cc: Oil Conservation Commission - Hobbs
Oil & Gas Engineering Committee - Hobbs
State Land Office - Santa Fe

C
O
P
Y

OIL CONSERVATION COMMISSION

P. O. BOX 2088

SANTA FE, NEW MEXICO 87501

June 11, 1969

Millard Deck Oil Company
P. O. Box 409
Eunice, New Mexico

Attention: Mr. Millard Deck

Administrative Order NSP-808

Gentlemen:

Reference is made to your application for approval of a 160-acre non-standard gas proration unit in the Jalmat Gas Pool consisting of the following acreage:

LEA COUNTY, NEW MEXICO
TOWNSHIP 24 SOUTH, RANGE 36 EAST, NMPM
Section 36: NW/4 NE/4, E/2 NW/4, and
NE/4 SW/4

It is understood that this unit is to be dedicated to your Shell State Well No. 2, located 2310 feet from the North line and 1980 feet from the West line of said Section 36.

By authority granted me under the provisions of Order No. R-1670, as amended, you are hereby authorized to operate the above-described acreage as a non-standard gas proration unit.

Very truly yours,

A. L. PORTER, Jr.
Secretary-Director

ALP/GMH/esr

cc: Oil Conservation Commission - Hobbs
Oil & Gas Engineering Committee - Hobbs
State Land Office - Santa Fe
Proration Department, OCC - Santa Fe

**NEW MEXICO OIL CONSERVATION COMMISSION
WELL LOCATION AND ACREAGE DEDICATION PLAT**

Form C-102
Supersedes C-128
Effective 1-1-65

All distances must be from the outer boundaries of the Section

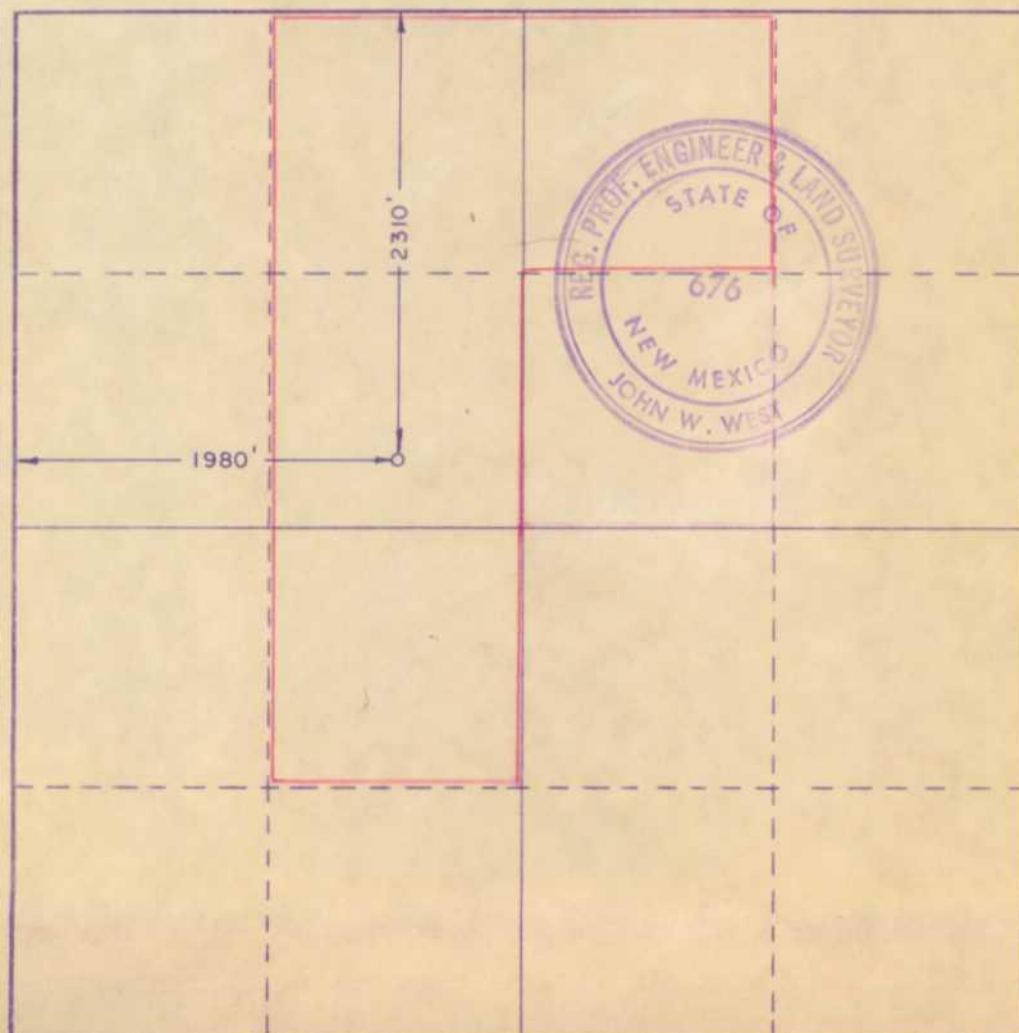
Operator MILLARD DECK			Lease SHELL STATE		Well No. 2
Unit Letter F	Section 36	Township 24 SOUTH	Range 36 EAST	County LEA	
Actual Footage Location of Well:					
2310 feet from the NORTH line and		1980 feet from the WEST line			
Ground Level Elev. 3267.3	Producing Formation Yates	Pool Jalmat Yates Seven Rivers		Dedicated Acreage: 160 Acres	

1. Outline the acreage dedicated to the subject well by colored pencil or hachure marks on the plat below.
2. If more than one lease is dedicated to the well, outline each and identify the ownership thereof (both as to working interest and royalty).
3. If more than one lease of different ownership is dedicated to the well, have the interests of all owners been consolidated by communitization, unitization, force-pooling, etc?

☐ Yes ☐ No If answer is "yes," type of consolidation _____

If answer is "no," list the owners and tract descriptions which have actually been consolidated. (Use reverse side of this form if necessary.) _____

No allowable will be assigned to the well until all interests have been consolidated (by communitization, unitization, forced-pooling, or otherwise) or until a non-standard unit, eliminating such interests, has been approved by the Commission.



CERTIFICATION

I hereby certify that the information contained herein is true and complete to the best of my knowledge and belief.

Name

Owner - Operator

Position

Millard Deck Oil Co.

Company

4/28/69

Date

I hereby certify that the well location shown on this plat was plotted from field notes of actual surveys made by me or under my supervision, and that the same is true and correct to the best of my knowledge and belief.

Date Surveyed

SEPTEMBER 17, 1968

Registered Professional Engineer and/or Land Surveyor

John W. West

Certificate No.

676

0 330 660 990 1320 1650 1980 2310 2640 2970 3300 3630 3960 4290 4620 4950 5280 5610 5940 6270 6600

NEW MEXICO OIL CONSERVATION COMMISSION
WELL LOCATION AND ACREAGE DEDICATION PLAT

Form C-102
Supersedes C-128
Effective 1-1-65

All distances must be from the outer boundaries of the Section.

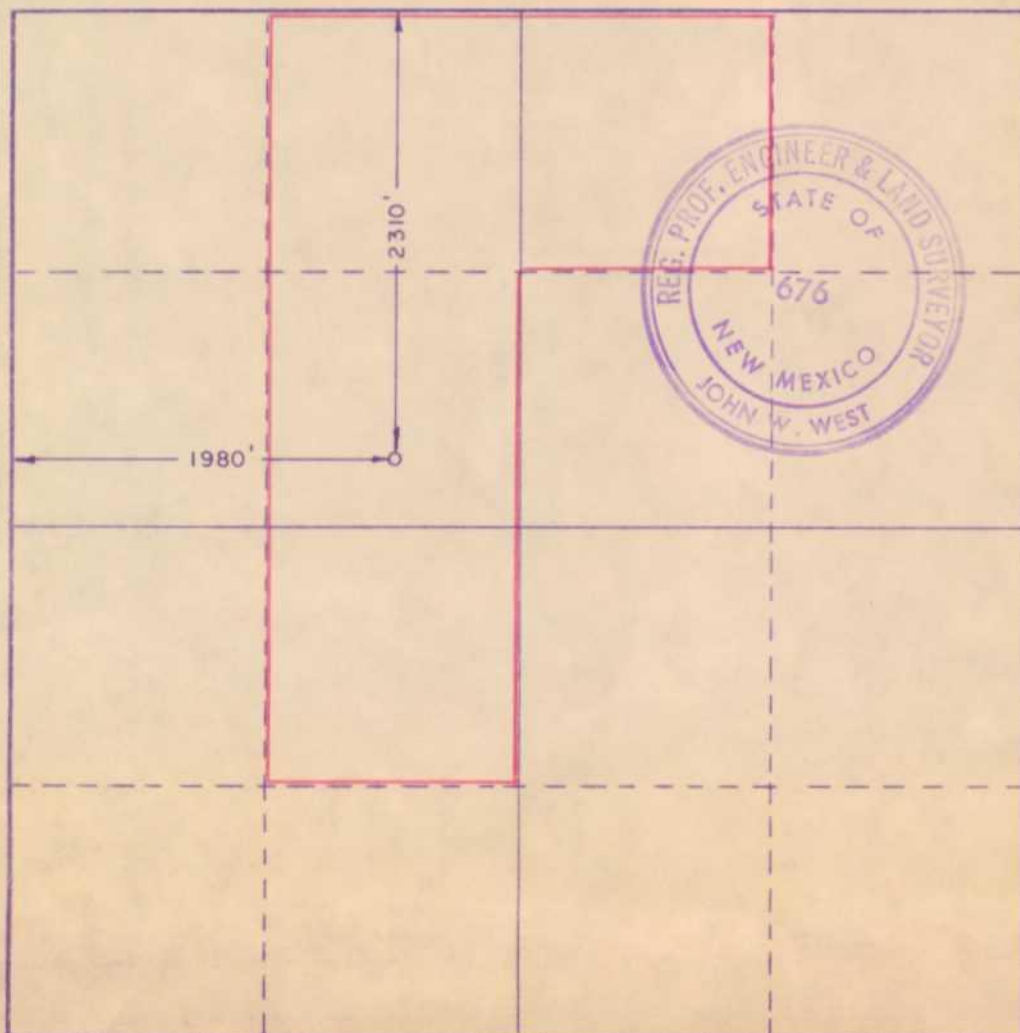
Operator MILLARD DECK			Lease SHELL STATE		Well No. 2
Unit Letter F	Section 36	Township 24 SOUTH	Range 36 EAST	County LEA	
Actual Footage Location of Well:					
2310 feet from the NORTH line and		1980 feet from the WEST line			
Ground Level Elev. 3267.3	Producing Formation Yates	Pool Jalmat yates Seven Rivers	Dedicated Acreage: 160 Acres		

1. Outline the acreage dedicated to the subject well by colored pencil or hachure marks on the plat below.
2. If more than one lease is dedicated to the well, outline each and identify the ownership thereof (both as to working interest and royalty).
3. If more than one lease of different ownership is dedicated to the well, have the interests of all owners been consolidated by communitization, unitization, force-pooling, etc?

☐ Yes ☐ No If answer is "yes," type of consolidation _____

If answer is "no," list the owners and tract descriptions which have actually been consolidated. (Use reverse side of this form if necessary.) _____

No allowable will be assigned to the well until all interests have been consolidated (by communitization, unitization, forced-pooling, or otherwise) or until a non-standard unit, eliminating such interests, has been approved by the Commission.



CERTIFICATION

I hereby certify that the information contained herein is true and complete to the best of my knowledge and belief.

Millard Deck
Name

Owner - Operator
Position

Millard Deck Oil Co.
Company

4/28/69
Date

I hereby certify that the well location shown on this plat was plotted from field notes of actual surveys made by me or under my supervision, and that the same is true and correct to the best of my knowledge and belief.

Date Surveyed

SEPTEMBER 17, 1968

Registered Professional Engineer
and/or Land Surveyor

John W. West
Certificate No.

676

INTENTIONAL OMISSIONS

The following document(s) have been intentionally omitted from this file due to the indicated reasons.

FILE # NSP 808

DESCRIPTION OF OMITTED DOCUMENTS

OMITTED DOCUMENT

REASON OMITTED

"Shell State No. 2" Radioactivity Log too large to copy
"Shell State No. 2" Guard Log too large to copy