

OIL CONSERVATION COMMISSION  
Hobbs DISTRICT

OIL CONSERVATION COMMISSION  
BOX 2088  
SANTA FE, NEW MEXICO

DATE February 1, 1977

RE: Proposed MC \_\_\_\_\_  
Proposed DHC \_\_\_\_\_  
Proposed NSL \_\_\_\_\_  
Proposed SWD \_\_\_\_\_  
Proposed WFX \_\_\_\_\_  
Proposed PMX \_\_\_\_\_  
NSP X

Gentlemen:

I have examined the application dated \_\_\_\_\_  
for the Amerada Hess Corp. State "P" Gas Com #3-K 29-19-37  
Operator Lease and Well No. Unit, S-T-R

and my recommendations are as follows:

O.K.---J.S.  
\_\_\_\_\_  
\_\_\_\_\_  
\_\_\_\_\_  
\_\_\_\_\_  
\_\_\_\_\_

Yours very truly,

*Jerry Lehn*

# AMERADA HESS CORPORATION

P. O. DRAWER "D"  
MONUMENT, NEW MEXICO 88265

January 27, 1977

New Mexico Oil Conservation Commission  
P. O. Box 2088  
Santa Fe, New Mexico 87501

Refer: Application of Amerada Hess Corporation  
for Administrative Approval of a 160 acre  
Non-Standard Gas Proration Unit.

*NSP-1042*  
*104200*  
*Recd 7/Jan 2*

Gentlemen:

*Eumont Gas Pool*

Amerada Hess Corporation requests that a 160 acre non-standard gas proration unit, consisting of the SW/4 of Section 29, T19S, R37E, Lea County, New Mexico be assigned to the State "P" Gas Comm. #3, Unit K, Sec. 29, T19S, R37E. The requested non-standard proration unit is currently assigned to State "P" Gas Comm. #2, Unit M, Sec. 29, T19S, R37E. The number two completion is an oil-gas completion in Grayburg/San Andres and Eumont Queen zones. The Eumont Queen zone will be plugged off upon completion of the #3 well.

Form C-102 and plat of wells in the area is attached.

The following offset operators have been furnished a copy of this application.

Marathon Oil Company, P. O. Box 552, Midland, Texas 79701  
Skelly Oil Company, P. O. Box 1351, Midland, Texas 79701  
Gulf Oil Company, P. O. Box 1150, Midland, Texas 79701  
The Wiser Oil Company, Box 2467, Hobbs, New Mexico 88240

AMERADA HESS CORPORATION

By *E. B. Disher*  
Supv. Adm. Ser.

XC - J. I. Johnson  
Grant Miller  
Gib Miller  
N.M.O.C.C., Hobbs

NEW MEXICO OIL CONSERVATION COMMISSION  
WELL LOCATION AND ACREAGE DEDICATION PLAT

Form C-102  
Supersedes C-128  
Effective 1-1-65

All distances must be from the outer boundaries of the Section.

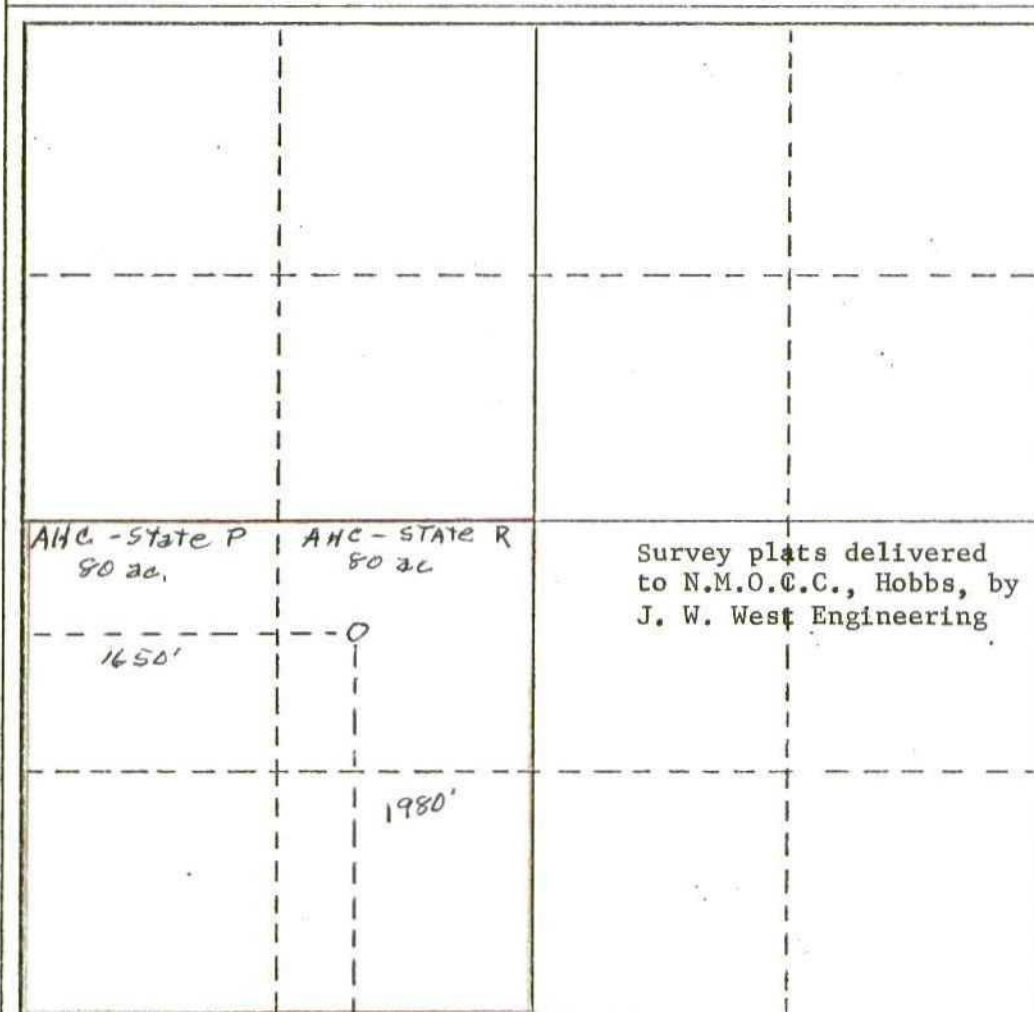
Operator <b>Amerada Hess Corporation</b>			Lease <b>State "P" Gas Comm.</b>		Well No. <b>3</b>
Unit Letter <b>K</b>	Section <b>29</b>	Township <b>19S</b>	Range <b>37E</b>	County <b>Lea</b>	
Actual Footage Location of Well:					
<b>1980</b> feet from the <b>South</b>		line and <b>1650</b> feet from the <b>West</b>		line	
Ground Level Elev. <b>3699' Ungraded</b>	Producing Formation <b>Eumont Queen</b>	Pool <b>Monument</b>		Dedicated Acreage: <b>160</b> Acres	

1. Outline the acreage dedicated to the subject well by colored pencil or hachure marks on the plat below.
2. If more than one lease is dedicated to the well, outline each and identify the ownership thereof (both as to working interest and royalty).
3. If more than one lease of different ownership is dedicated to the well, have the interests of all owners been consolidated by communitization, unitization, force-pooling, etc?

☐ Yes   ☐ No   If answer is "yes," type of consolidation \_\_\_\_\_

If answer is "no," list the owners and tract descriptions which have actually been consolidated. (Use reverse side of this form if necessary.) \_\_\_\_\_

No allowable will be assigned to the well until all interests have been consolidated (by communitization, unitization, forced-pooling, or otherwise) or until a non-standard unit, eliminating such interests, has been approved by the Commission.



**CERTIFICATION**

I hereby certify that the information contained herein is true and complete to the best of my knowledge and belief.

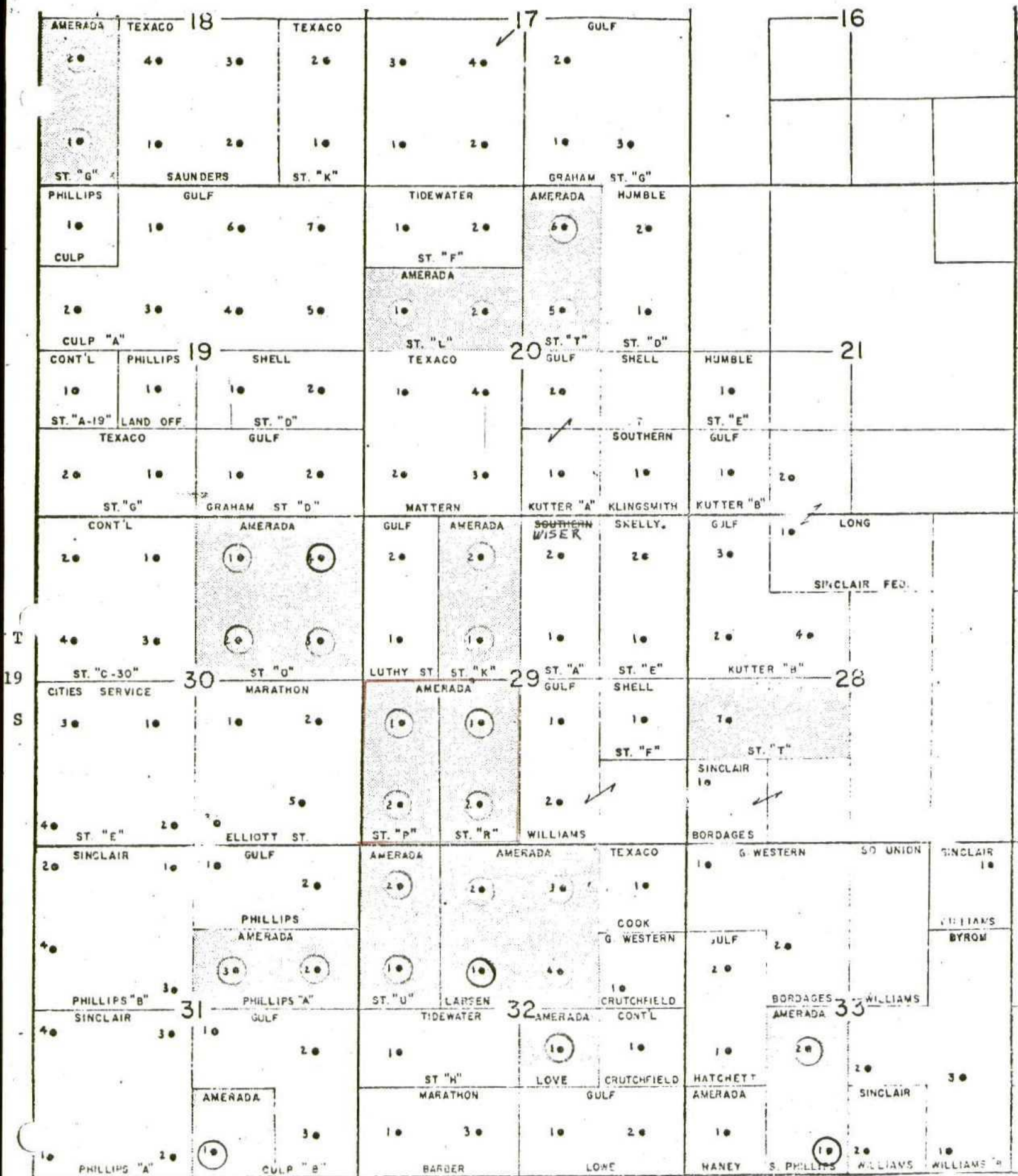
Name E. B. Fisher  
 Position  
**Supv. Adm. Ser.**  
 Company  
**Amerada Hess Corporation**  
 Date  
**January 27, 1977**

I hereby certify that the well location shown on this plat was plotted from field notes of actual surveys made by me or under my supervision, and that the same is true and correct to the best of my knowledge and belief.

Date Surveyed \_\_\_\_\_  
 Registered Professional Engineer  
 and/or Land Surveyor

Certificate No. \_\_\_\_\_





- A.H.C. Producing Wells
- A.H.C. Temporary Abandoned

Monument Field  
Lea County, New Mexico