



**Marathon
Oil Company**

PO Box 2409
Hobbs New Mexico 88240
Telephone 505/393 7106

February 15, 1977

New Mexico Oil Conservation Commission
P. O. Box 2088
Santa Fe, New Mexico 87501

*MS - 1045
K. 5(R)3(f) R-1670N
Mar 5*

ATTENTION: Mr. J. D. Ramey, Secretary-Director

Re: Application by Marathon Oil Company for the Assignment of a
120-Acre Non-Standard Proration Unit for the J. L. Muncy Well
No. 3, Blinebry Oil and Gas Pool, Lea County, New Mexico

Gentlemen:

Marathon Oil Company respectfully requests that the New Mexico Oil Conservation Commission grant administratively this application for a 120-acre non-standard proration unit for the J. L. Muncy Well No. 3. This well is a Blinebry gas well located 350' from South line and 1720' from West line, Section 24, Township 22-South, Range 37-East, Lea County, New Mexico. The non-standard proration unit for which approval is sought is comprised of Units "N", "O", and "I" of Section 24, Township 22-South, Range 37-East. This non-standard proration unit was necessitated because the 40 acres in Unit "P" of Section 24, Township 22-South, Range 37-East, Lea County, New Mexico, has been dedicated to the Blinebry oil completion in the J. L. Muncy Well No. 5.

Enclosed with this letter of application is a lease plat showing the proposed non-standard proration unit.

A copy of this application along with the enclosed lease plat has been mailed by registered mail to the following offset operators:

Texas Pacific Oil Co., Inc., Box 4067, Midland, Texas 79701
Gulf Energy & Minerals Co.-US, Box 1150, Midland, Texas 79701
Hanson Oil Corporation, Box 1515, Roswell, New Mexico 88201
Phillips Petroleum Company, Phillips Building, Odessa, Texas 79761

Respectfully submitted,

William D. Holmes

William D. Holmes
Petroleum Engineer

WDH:mfm
Enclosures

xc (w/enclosures): Offset Operators

*120 ac
Sec 24: S 1/4 SW 1/4, SW 1/4 SE 1/4, & NE 1/4 SE 1/4*

**NEW MEXICO OIL CONSERVATION COMMISSION
WELL LOCATION AND ACREAGE DEDICATION PLAT**

Form C-102
Supersedes C-128
Effective 1-1-65

All distances must be from the outer boundaries of the Section.

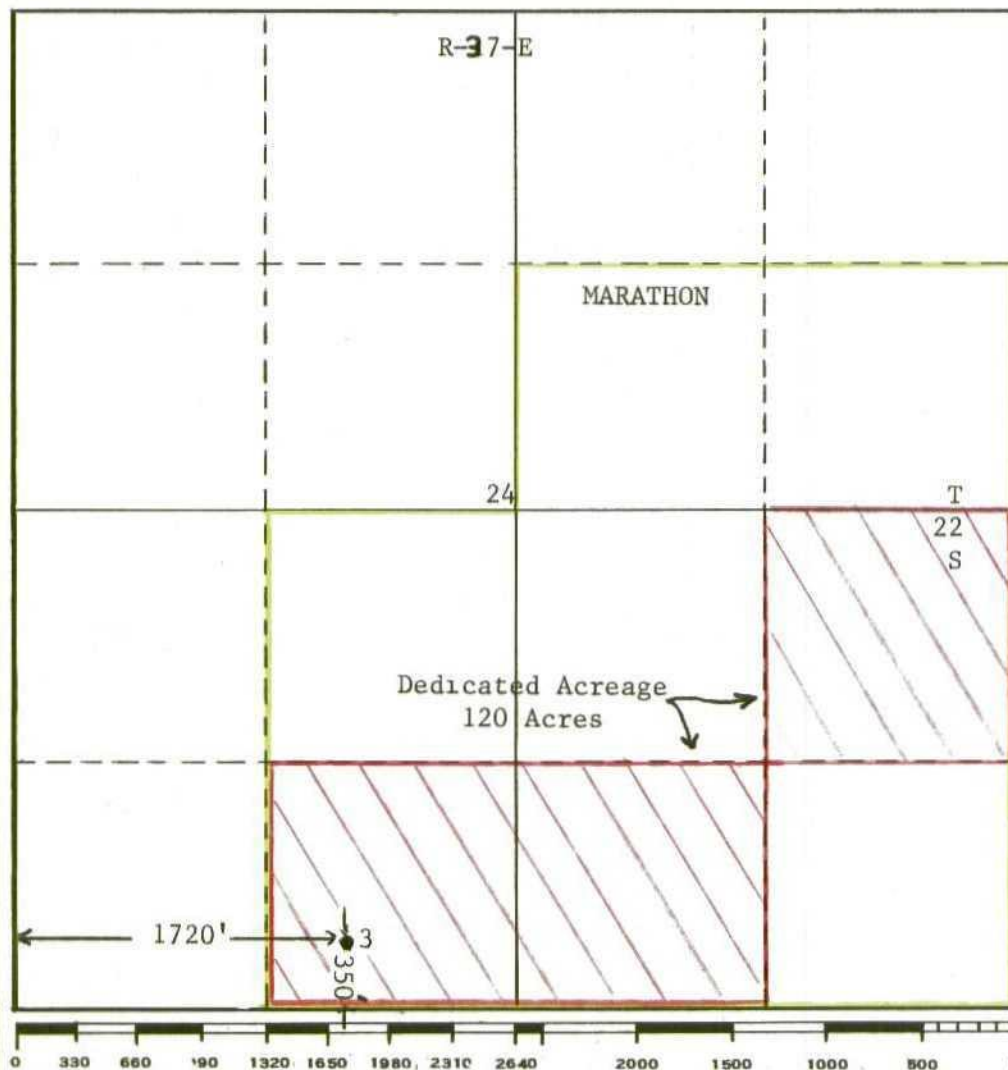
Operator Marathon Oil Company			Lease J. L. Muncy		Well No. 3
Unit Letter N	Section 24	Township 22-S	Range 37-E	County Lea	
Actual Footage Location of Well: <div style="display: flex; justify-content: space-between;"> 350 feet from the South line and 1720 feet from the West line </div>					
Ground Level Elev. 3320'	Producing Formation Blinebry	Pool Blinebry	Dedicated Acreage: 120 Acres		

1. Outline the acreage dedicated to the subject well by colored pencil or hachure marks on the plat below.
2. If more than one lease is dedicated to the well, outline each and identify the ownership thereof (both as to working interest and royalty).
3. If more than one lease of different ownership is dedicated to the well, have the interests of all owners been consolidated by communitization, unitization, force-pooling, etc?

☐ Yes ☐ No If answer is "yes," type of consolidation _____

If answer is "no," list the owners and tract descriptions which have actually been consolidated. (Use reverse side of this form if necessary.) _____

No allowable will be assigned to the well until all interests have been consolidated (by communitization, unitization, forced-pooling, or otherwise) or until a non-standard unit, eliminating such interests, has been approved by the Commission.



CERTIFICATION

I hereby certify that the information contained herein is true and complete to the best of my knowledge and belief.

William D. Holmes

Name

William D. Holmes

Position

Petroleum Engineer

Company

Marathon Oil Company

Date

Feb. 14, 1977

I hereby certify that the well location shown on this plat was plotted from field notes of actual surveys made by me or under my supervision, and that the same is true and correct to the best of my knowledge and belief.

Date Surveyed

Registered Professional Engineer and/or Land Surveyor

Certificate No.