

NSP
104 D II
No waiting

MEWBOURNE OIL COMPANY

1010 WALL TOWERS WEST
MIDLAND, TEXAS 79701
915-682-3715

SEP - 6 1977

September 1, 1977

hsp- 1068

Mr. Joe D. Ramey, Secretary-Director
Oil Conservation Commission
State of New Mexico
P. O. Box 2088
Santa Fe, New Mexico 87501

RE: State "H" No. 1
N/2 Sec 7-16S-34E
Lea County, New Mexico
State Lease No. L-6938

Dear Mr. Ramey:

We respectfully request administrative approval of a non-standard gas unit for the drilling of the captioned well under the provisions of Rule 104-D-II, inasmuch as the unorthodox size of the unit is necessitated by a variation in the legal subdivision of the U. S. Public Land Surveys. Said well will be drilled at a standard location within the unit.

The proposed non-standard unit contains 303.87 acres and consists of Lots 1 (31.92 acres) and 2 (31.95 acres), E/2 NW/4, and the NE/4 of Section 7-T16S-R34E.

Your early approval of this non-standard unit will be appreciated as we are ready to commence operations on receipt of approval. You will recall that you granted similar approval for the drilling of our State "E" NO. 1 located in Section 6-T16S-R34E, by Administrative Order NSP-1039, by letter dated January 26, 1977.

Yours very truly,



Donald G. Haden
District Manager

DGH:kc

NEW MEXICO OIL CONSERVATION COMMISSION
WELL LOCATION AND ACREAGE DEDICATION PLAT

Form C-102
Supersedes C-128
Effective 1-1-65

SEP - 6 1977

All distances must be from the outer boundaries of the Section.

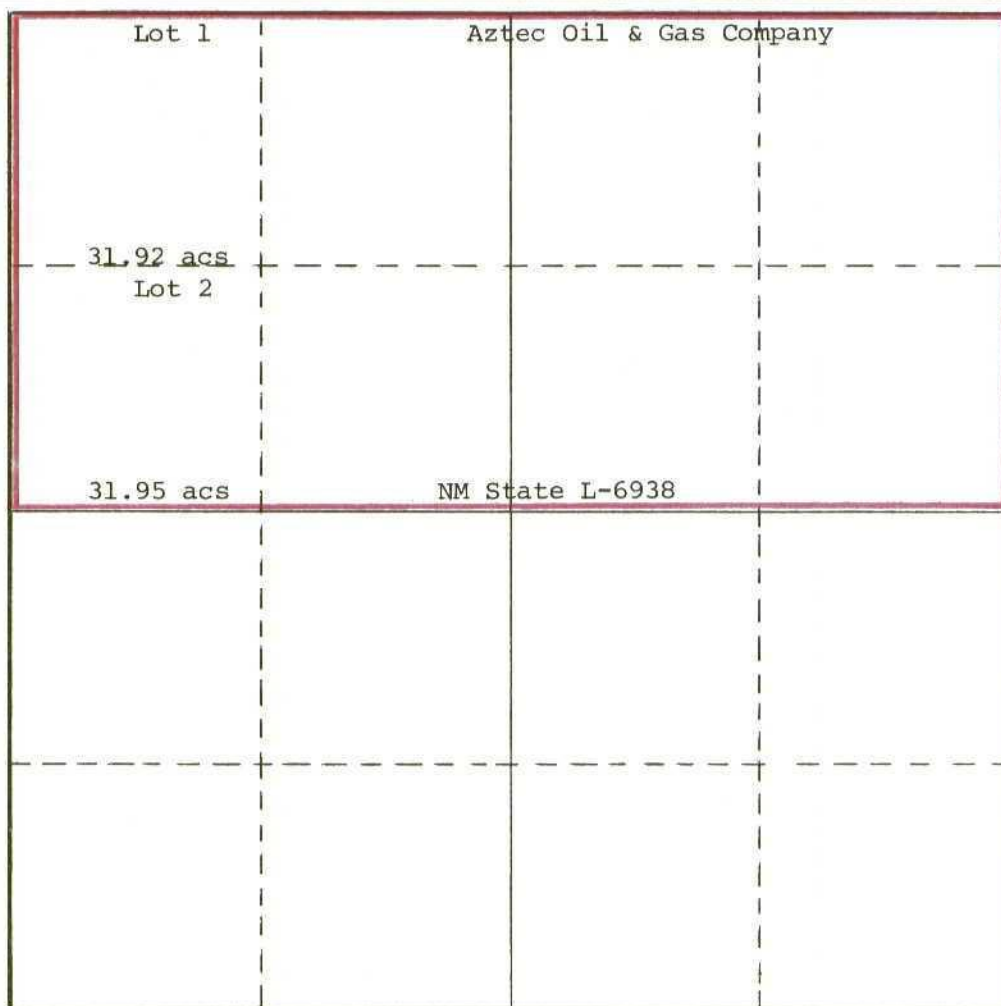
Operator Mewbourne Oil Company			Lease State H		Well No. 1
Unit Letter	Section 7	Township 16 South	Range 34 East	County Lea	
Actual Footage Location of Well: To be drilled at a standard location within the spacing unit					
Ground Level Elev.		Producing Formation Morrow	Pool Undesignated	Dedicated Acreage: 303.87 Acres	

1. Outline the acreage dedicated to the subject well by colored pencil or hachure marks on the plat below.
2. If more than one lease is dedicated to the well, outline each and identify the ownership thereof (both as to working interest and royalty).
3. If more than one lease of different ownership is dedicated to the well, have the interests of all owners been consolidated by communitization, unitization, force-pooling, etc?

☐ Yes ☐ No If answer is "yes," type of consolidation _____

If answer is "no," list the owners and tract descriptions which have actually been consolidated. (Use reverse side of this form if necessary.) _____

No allowable will be assigned to the well until all interests have been consolidated (by communitization, unitization, forced-pooling, or otherwise) or until a non-standard unit, eliminating such interests, has been approved by the Commission.



CERTIFICATION

I hereby certify that the information contained herein is true and complete to the best of my knowledge and belief.

Name

Position

District Manager

Company

Mewbourne Oil Company

Date

August 31, 1977

I hereby certify that the well location shown on this plat was plotted from field notes of actual surveys made by me or under my supervision, and that the same is true and correct to the best of my knowledge and belief.

Date Surveyed

Registered Professional Engineer and/or Land Surveyor

Certificate No.

