

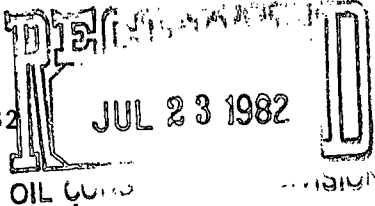
Mark K. Mosley  
Division Manager  
Production Department  
Hobbs Division  
North American Production



Conoco Inc.  
P. O. Box 460  
726 E. Michigan  
Hobbs, NM 88240  
(505) 393-4141

July 15, 1982

JUL 23 1982



State of New Mexico SANTA FE  
Energy and Minerals Department  
Oil Conservation Division  
P. O. Box 2088  
Santa Fe, New Mexico 87501

Attention: Mr. Joe D. Ramey

Gentlemen:

Request for Cancellation of that Part of NSP Order R-4439 That Applies to our M.E. Wantz Well No. 11, and Cancellation of Administrative Order NSP-1230 Which Applies to our M.E. Wantz Well No. 8 and Establishment of Two New Non-standard Proration Units in the Blinebry Oil and Gas Pool.

NSP Order R-4439 created a non-standard proration unit of 120 acres which was dedicated to our M.E. Wantz Well No. 11, located in Unit L, Section 21, T-21S, R-37E. We respectfully request that the existing NSP (W/2 and NE/4 of SW/4) be cancelled and a new 40 acre NSP, consisting of the NW/4 of the SW/4 of Section 21 (Unit Letter L), be approved.

Administrative Order NSP-1230 created a 120 acre NSP which was dedicated to our M. E. Wantz Well No. 8, located in Unit O, Section 21, T-21S, R-37E. This well is now classified as an oil well and thus has only 40 acres dedicated, therefore we request that Administrative Order NSP-1230 be cancelled.

Additionally, our M.E. Wantz Well No. 1, located in Unit N, Section 21, T-21S, R-37E, is currently classified as an oil well, but due to recent G.O.R. tests, we have submitted a C-116 form requesting reclassification as a gas well. This well was originally drilled as an oil well and is an unorthodox gas well location (440' FSL & 2310' FWL). We respectfully request that a NSP of 160 acres be created to be dedicated to this well. The NSP will consist of the E/2 and the SW/4 of the SW/4 and the NW/4 of the SE/4 of Section 21, Unit Letters J, K, M, and N.

Each of the proposed units will conform to regulatory requirements as stated in order No. R-1670 N:

- 1) The unit will consist of contiguous quarter-quarter sections.
- 2) The unit consists of not more than 164 acres and lies wholly within a single governmental section.

NSP-1323  
Two separate NSP's  
40 & 160  
Rule 5 (G) R 1620  
8-14-82  
Blinebry Oil & Gas Pool

NSP

Wantz's Pool in Bl = 200 acres

Aug 12

Also place R4439 in  
abeyance and  
supercede NSP 1230

T

NSP-1323

NSP-1330

State of New Mexico  
July 14, 1982  
Page 2

- 3) The entire proposed unit may be reasonably presumed to be productive of gas.
- 4) Copies of this application have been furnished by certified mail to all offset operators and all operators within the section.

Yours very truly,

A handwritten signature in dark ink, appearing to read "M. K. Mosley", with a stylized flourish at the end.

M. K. Mosley  
Division Manager

MEG:agd

Attachment

cc: N.M.O.C.D., Hobbs  
Offset Operators (See attached address list)

Atlantic Richfield Company  
P. O. Box 1710  
Hobbs, NM 88240

Hunt Energy Corp.  
2500 1st National Bank  
Dallas, TX 75202

Sun Exploration and Production  
P. O. Box 2880  
Dallas, TX 75221

J. R. Cone  
P. O. Box 871  
Lubbock, TX 79408

Marathon Oil Company  
Broadmoor Building  
Hobbs, NM 88240

Getty Oil Company  
P. O. Box 730  
Hobbs, NM 88240

Gulf Oil Corporation  
P. O. Box 670  
Hobbs, NM 88240

Shell Oil Company  
P. O. Box 1950  
Hobbs, NM 88240

**NEW MEXICO OIL CONSERVATION COMMISSION  
WELL LOCATION AND ACREAGE DEDICATION PLAT**

Form C-102  
Supersedes C-128  
Effective 1-1-65

All distances must be from the outer boundaries of the Section.

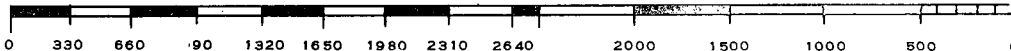
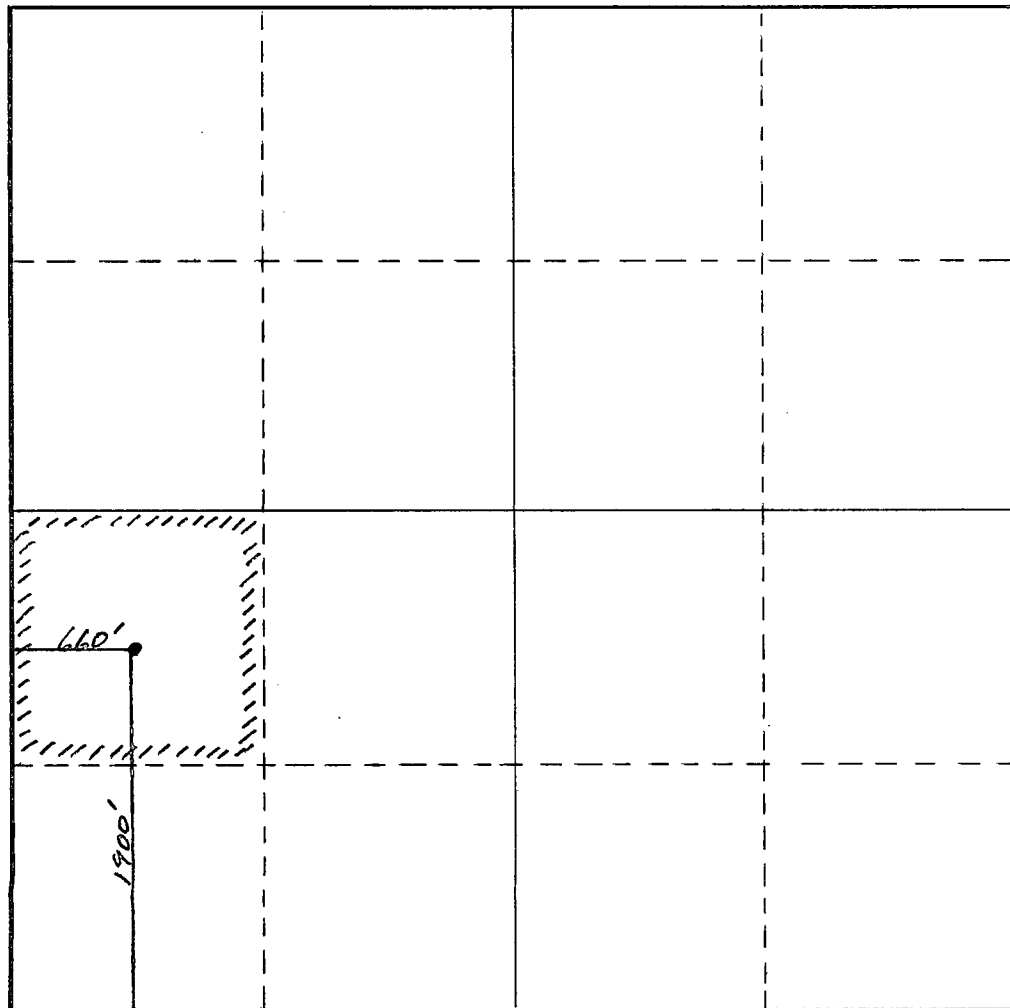
Operator <b>Conoco Inc.</b>		Lease <b>M. E. Wanta</b>		Well No. <b>11</b>
Unit Letter <b>L</b>	Section <b>21</b>	Township <b>21 S</b>	Range <b>37 E</b>	County <b>Lea</b>
Actual Footage Location of Well: <b>1,900</b> feet from the <b>South</b> line and <b>660'</b> feet from the <b>West</b> line				
Ground Level Elev.	Producing Formation <b>Blinberry</b>	Pool <b>Blinberry Oil + Gas</b>	Dedicated Acreage: <b>40</b> Acres	

1. Outline the acreage dedicated to the subject well by colored pencil or hachure marks on the plat below.
2. If more than one lease is dedicated to the well, outline each and identify the ownership thereof (both as to working interest and royalty).
3. If more than one lease of different ownership is dedicated to the well, have the interests of all owners been consolidated by communitization, unitization, force-pooling, etc?

☐ Yes    ☐ No    If answer is "yes," type of consolidation \_\_\_\_\_

If answer is "no," list the owners and tract descriptions which have actually been consolidated. (Use reverse side of this form if necessary.) \_\_\_\_\_

No allowable will be assigned to the well until all interests have been consolidated (by communitization, unitization, forced-pooling, or otherwise) or until a non-standard unit, eliminating such interests, has been approved by the Commission.



**NEW MEXICO OIL CONSERVATION COMMISSION  
WELL LOCATION AND ACREAGE DEDICATION PLAT**

Form C-102  
Supersedes C-128  
Effective 1-1-65

All distances must be from the outer boundaries of the Section.

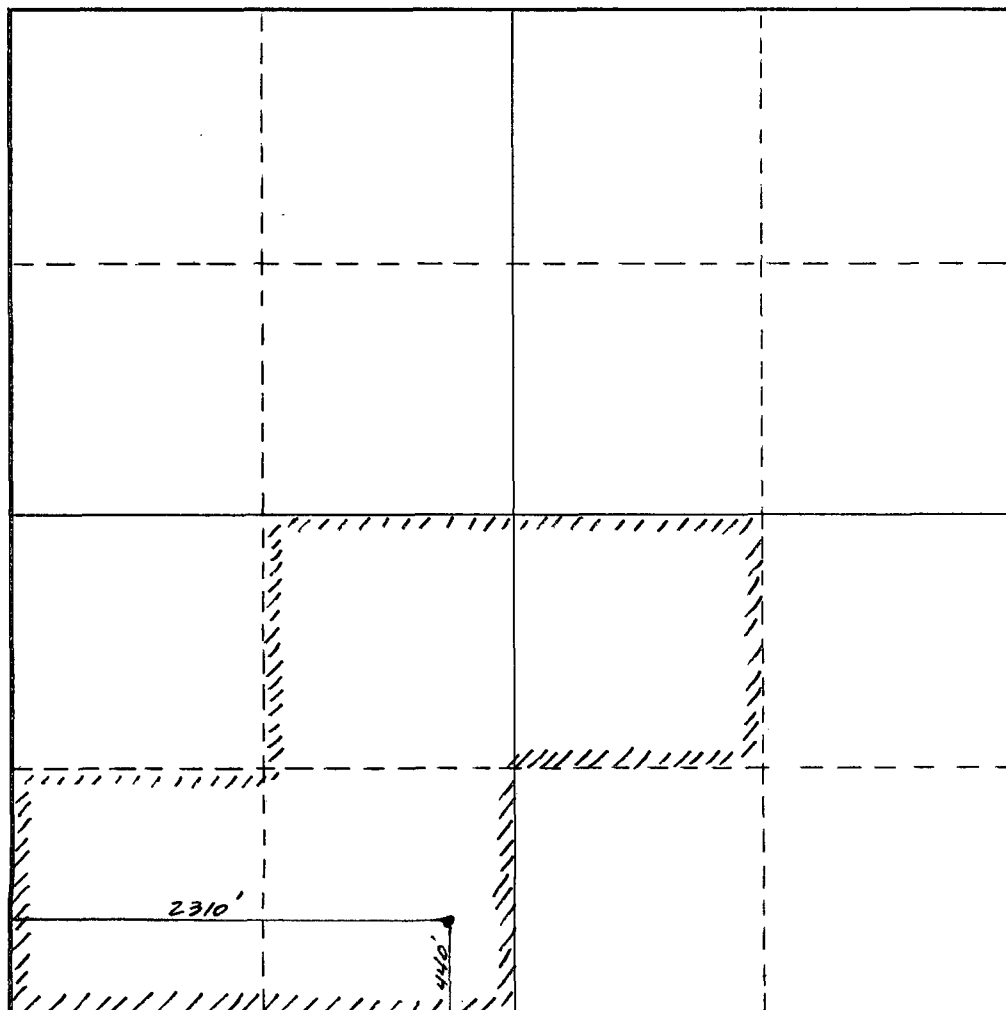
Operator <b>CONOCO INC.</b>			Lease <b>M.E. Wanta</b>		Well No. <b>1</b>
Unit Letter <b>N</b>	Section <b>21</b>	Township <b>21 S</b>	Range <b>37 E</b>	County <b>Lea</b>	
Actual Footage Location of Well: <b>440'</b> feet from the <b>South</b> line and <b>2,310'</b> feet from the <b>West</b> line					
Ground Level Elev.	Producing Formation <b>Blinberry</b>		Pool <b>Blinberry Oil and Gas</b>		Dedicated Acreage: <b>160 Acres</b>

1. Outline the acreage dedicated to the subject well by colored pencil or hatchure marks on the plat below.
2. If more than one lease is dedicated to the well, outline each and identify the ownership thereof (both as to working interest and royalty).
3. If more than one lease of different ownership is dedicated to the well, have the interests of all owners been consolidated by communitization, unitization, force-pooling, etc?

☐ Yes    ☐ No    If answer is "yes," type of consolidation \_\_\_\_\_

If answer is "no," list the owners and tract descriptions which have actually been consolidated. (Use reverse side of this form if necessary.) \_\_\_\_\_

No allowable will be assigned to the well until all interests have been consolidated (by communitization, unitization, forced-pooling, or otherwise) or until a non-standard unit, eliminating such interests, has been approved by the Commission.



**CERTIFICATION**

I hereby certify that the information contained herein is true and complete to the best of my knowledge and belief.

Name **Jane A. Neen**  
 Position **Administrative Supervisor**  
 Company **Conoco Inc.**  
 Date **7-13-82**

I hereby certify that the well location shown on this plat was plotted from field notes of actual surveys made by me or under my supervision, and that the same is true and correct to the best of my knowledge and belief.

Date Surveyed \_\_\_\_\_

Registered Professional Engineer and/or Land Surveyor

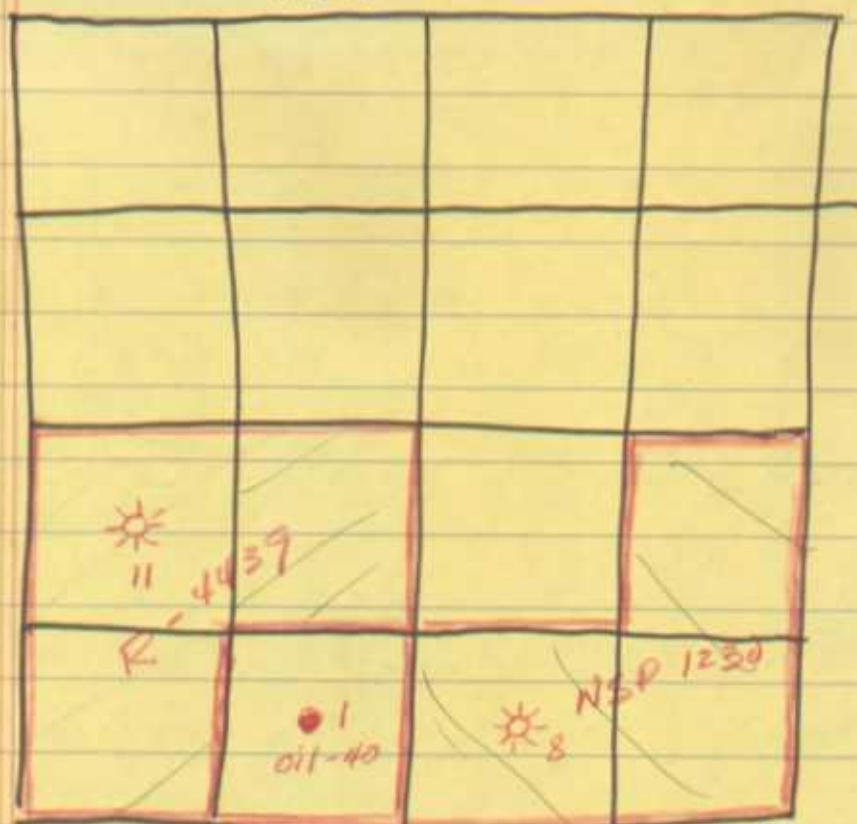
Certificate No. \_\_\_\_\_



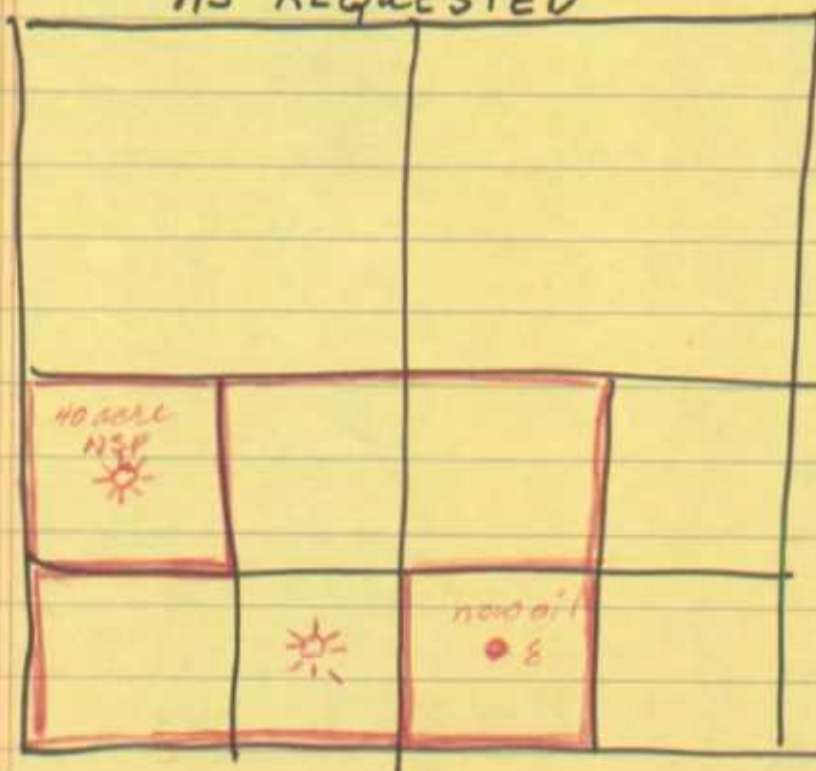




# PRESENT



# AS REQUESTED



*cancellation  
NSP 1230*

*put in abeyance  
R-4439*

*approve 40 acre  
NSP for # 11  
(NW 1/4 SW 1/4)*

*approve 160 acre  
NSP (E 1/2 SW 1/4, SW 1/4 SW 1/4  
and NW 1/4 SE 1/4)*