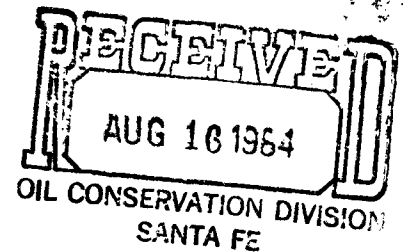


# Dollar Services

Oil & Gas Consulting  
Site Security, Gas Measurement, Witness Testing

P.O. Box 399  
Aztec, N.M. 87410  
505-334-9547



August 14, 1984

Mr. Gilbert Quintana  
P. O. Box 2088  
Santa Fe, NM 87501

NSP-1436(L)

Rule 104 D II & 104 F I

Release Sept. 15, 1984

Dear Sir:

FEDERAL LEASE

FOR

Gary-Williams Oil Producer requests approval for non-standard locations and non-standard pro-ration units for the following wells due to short sections:

## RIO PUERCO-MANCOS POOL

1. Johnson 5 #1 (660' FNL & 660' FEL) section 5-T20N-R2W. SANDOVAL Co. (Dedication 277 acres). *N/2 of Sec. 5 dedicated*
2. Johnson 6 #4 (660' FNL & 660' FWL) sec. 6-T20N-R2W. (Dedication 275.72 acres).

Section 5 and section 6 are both BLM land. All lots are also Public land according to Yolanda Vega with the Rio Puerco Bureau of Land Management Office in Albuquerque, N.M. The surface is leased to Eugene Johnson of Cuba, N.M.

✓ The leases surrounding these wells are owned by Gary-Williams Oil Prod.

We have enclosed copies of the C-107, survey plats by Mr. Kerr of Farmington, N.M. for your information.

If you need any further information, please do not hesitate to contact me. (505)334-9547.

Sincerely,

A handwritten signature in cursive script, appearing to read "Ned Dollar".

Ned Dollar, Agent  
Gary-Williams Oil Producer

ND:dd

Enclosures: Survey Plats and C-107

cc: Gary-Williams Oil Producer

## OIL CONSERVATION DIVISION

STATE OF NEW MEXICO

P. O. BOX 2088

Form C-107  
Revised 10-1-7

ENERGY AND MINERALS DEPARTMENT

SANTA FE, NEW MEXICO 87501

All distances must be from the outer boundaries of the Section.

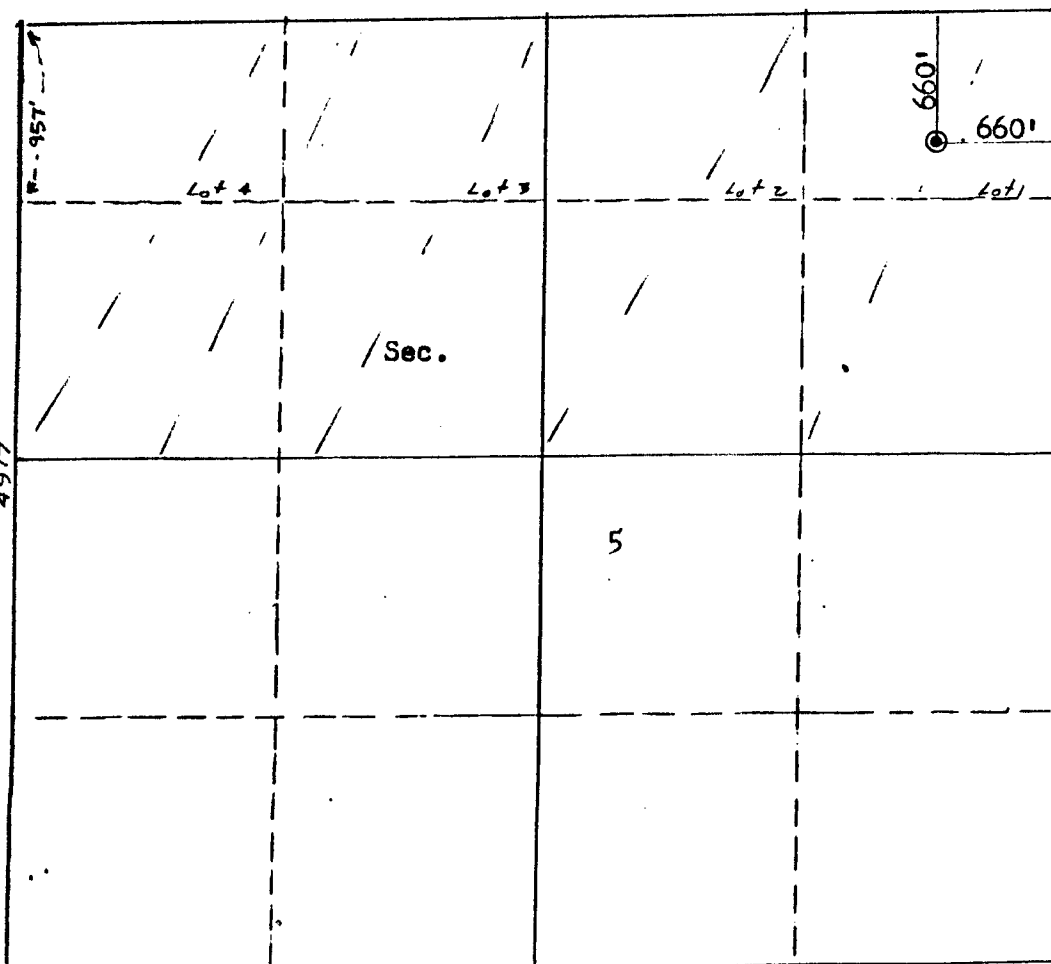
Operator <b>GARY-WILLIAMS OIL PRODUCER, INC.</b>		Lease <b>JOHNSON</b>		Well No. <b>5-1</b>
Unit Letter <b>A</b>	Section <b>5</b>	Township <b>20N</b>	Range <b>2W</b>	County <b>Sandoval</b>
Actual Footage Location of Well: <b>660</b> feet from the <b>North</b> line and <b>660</b> feet from the <b>East</b> line				
Ground Level Elev. <b>6931</b>	Producing Formation		Pool	Dedicated Acreage Acres

1. Outline the acreage dedicated to the subject well by colored pencil or hachure marks on the plat below.
2. If more than one lease is dedicated to the well, outline each and identify the ownership thereof (both as to working interest and royalty).
3. If more than one lease of different ownership is dedicated to the well, have the interests of all owners been consolidated by communitization, unitization, force-pooling, etc?

☐ Yes ☐ No If answer is "yes," type of consolidation \_\_\_\_\_

If answer is "no," list the owners and tract descriptions which have actually been consolidated. (Use reverse side of this form if necessary.) \_\_\_\_\_

No allowable will be assigned to the well until all interests have been consolidated (by communitization, unitization, forced-pooling, or otherwise) or until a non-standard unit, eliminating such interests, has been approved by the Commission.



## CERTIFICATION

I hereby certify that the information contained herein is true and complete to the best of my knowledge and belief.

Name *Ed. Keller*  
Position *Agent*  
Company *Gary-Williams Oil Producer Inc.*  
Date *August 9, 1984*

I hereby certify that the well location shown on this plat was plotted from field notes of actual surveys made by me or under my supervision, and that the same is true and correct to the best of my knowledge and belief.

Date Surveyed *August 1, 1984*  
Registered Professional Engineer and Land Surveyor  
*Fred B. Kerr Jr.*  
Certificate No. *4121*

3950

Scale: 1"=1000'