

*Received 10/6/87
Release immediately*

RECEIVED
OCT - 6 1987
D
DENNIS TIDWELL DRILLING
809 SOUTH HALDEMAN ROAD
ARTESIA, NEW MEXICO 88210
September 30, 1987
OIL CONSERVATION DIVISION
SANTA FE

Mr. Mike Stogner
Oil Conservation Division
P.O. Box 2088
Santa Fe, New Mexico 87501

Re: Cal Mon Tidwell #1 - High Lonesome Queen

Dear Mr. Stogner:

We have been instructed by Mrs. Morgan, Oil Conservation Division, Artesia, New Mexico to enclose the following C-101 (Application To Drill, and Plat on Section 19, T16S, R29E) and request a non-proration unit approval.

The Lot 2, Section 19, T16S, R29E is assumeably on 25.57 acres total.

Thank you for your cooperation in this matter. Please let us know if we may be of further assistance.

Sincerely,

DENNIS TIDWELL DRILLING

Dennis Tidwell

Dennis Tidwell

DT/ldt

Enclosures

NO. OF COPIES RECEIVED	
DISTRIBUTION	
SANTA FE	
FILE	
U.S.G.S.	
LAND OFFICE	
OPERATOR	

5A. Indicate Type of Lease
STATE ☒ FEE ☐
5. State Oil & Gas Lease No.
LG 4079

APPLICATION FOR PERMIT TO DRILL, DEEPEN, OR PLUG BACK

1. Type of Work
2. Type of Well
DRILL ☒ DEEPEN ☐ PLUG BACK ☐
3. Well Name
Dennis Tidwell
4. Kind of Well
GAS WELL ☐ OTHER ☐ SINGLE ZONE ☐ MULTIPLE ZONE ☐

7. Unit Agreement Name
8. Farm or Lease Name
Cal Mon Tidwell

6. Name of Operator
Dennis Tidwell
9. Address of Operator
809 South Haldeman Road, Artesia, NM 88210

9. Well No.
#1
10. Field and Pool, or Wildcat
High Lonesome Queen

11. Location of well
UNIT LETTER E LOCATED 2310' FEET FROM THE North LINE
512' FEET FROM THE West LINE OF SEC. 19 TWP. 16S RGE. 29E NMPM

12. County
Eddy

13. Elevations (Show whether D.F., K.I., etc.)
3584
14. Kind & Status Plug. Bond
One-Well
15. Proposed Depth
1700'
16. Formation
High Lonesome Queen
17. Drilling Contractor
Cable Tool
18. Approx. Date Work will start
October 5, 1987

20. Rotary or C.T.
Cable Tool

PROPOSED CASING AND CEMENT PROGRAM

SIZE OF HOLE	SIZE OF CASING	WEIGHT PER FOOT	SETTING DEPTH	SACKS OF CEMENT	EST. TOP
12 1/2"	10 3/4"	34#	200'	100 Sxs. "C"	Surface
10"	7"	16#	1700'	300 Sxs. "C"	Surface

Plan to spud Artesia Queen Penrose well on October 15, 1987 with 12 1/2" bit. Set 200 feet of 10 3/4" casing 34# or better with 200 Sxs. Class "C" cement. Drill out with 10" bit to approximately 1700 feet or less. IF commercial shows are present, 7 inch casing or 5 1/2 inch casing will be set with 300 Sxs. of Class "C" neat and circulate to surface. If dry hole, proper plugs will be set as prescribed by NMOCD.

OVER SPACE DESCRIBE PROPOSED PROGRAM; IF PROPOSAL IS TO DEEPEN OR PLUG BACK, GIVE DATA ON PRESENT PRODUCTIVE ZONE AND PROPOSED NEW PRODUCTION. GIVE BLOWOUT PREVENTER PROGRAM, IF ANY.

I hereby certify that the information above is true and complete to the best of my knowledge and belief.

Dennis Tidwell Title Operator Date September 30, 1987

(This space for State Use)

APPROVED BY _____ TITLE _____ DATE _____

CONDITIONS OF APPROVAL, IF ANY:

NEW MEXICO OIL CONSERVATION COMMISSION
WELL LOCATION AND ACREAGE DEDICATION PLAT

Form C-102
Supersedes C-128
Effective 1-1-65

All distances must be from the outer boundaries of the Section.

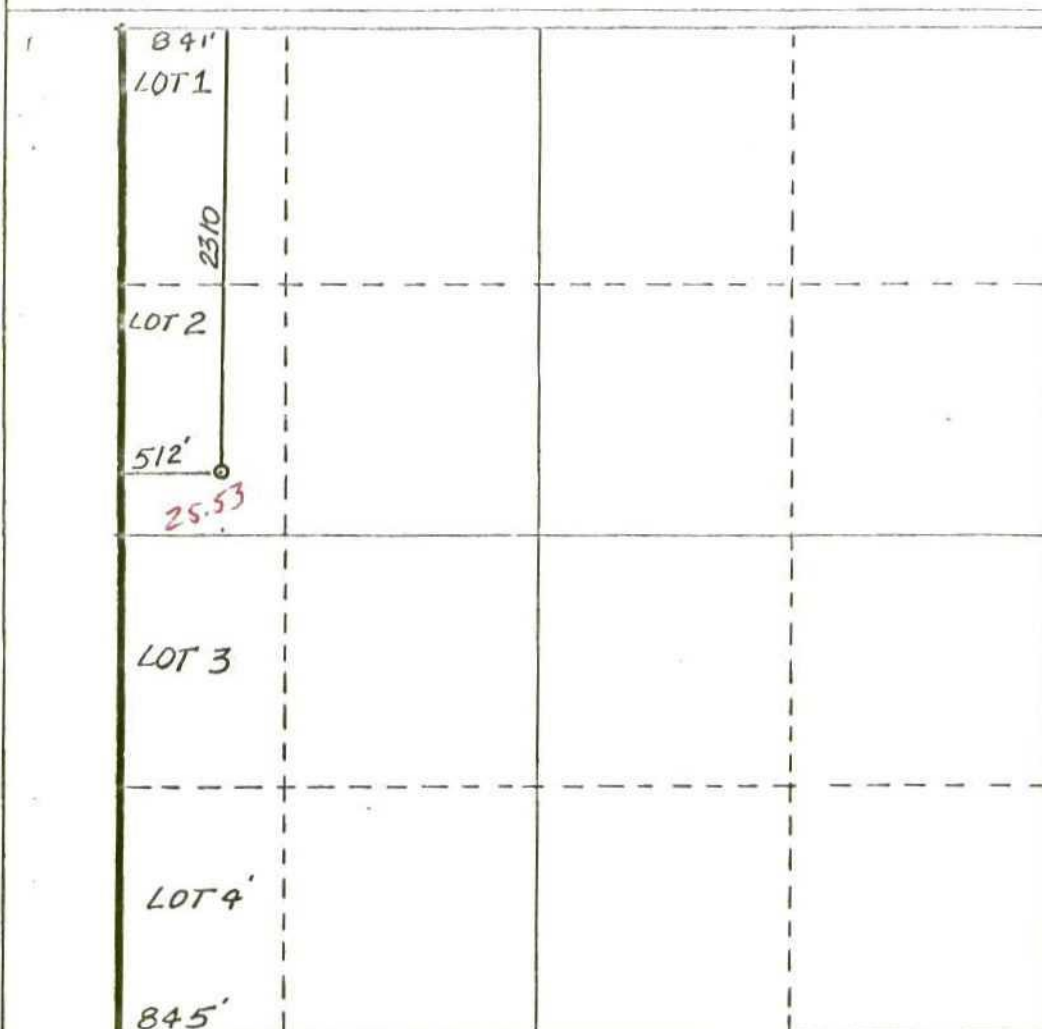
Operator DENNIS TIDWELL DRILLING			Lease Cal-mon State		Well No. 1
Unit Letter E	Section 19	Township 16 South	Range 29 East	County Eddy	
Actual Footage Location of Well: 2310 feet from the North line and 512 feet from the West line					
Ground Level Elev. 3584.	Producing Formation		Pool	Dedicated Acreage: Acres	

1. Outline the acreage dedicated to the subject well by colored pencil or hachure marks on the plat below.
2. If more than one lease is dedicated to the well, outline each and identify the ownership thereof (both as to working interest and royalty).
3. If more than one lease of different ownership is dedicated to the well, have the interests of all owners been consolidated by communitization, unitization, force-pooling, etc?

☐ Yes ☐ No If answer is "yes," type of consolidation _____

If answer is "no," list the owners and tract descriptions which have actually been consolidated. (Use reverse side of this form if necessary.) _____

No allowable will be assigned to the well until all interests have been consolidated (by communitization, unitization, forced-pooling, or otherwise) or until a non-standard unit, eliminating such interests, has been approved by the Commission.



CERTIFICATION

I hereby certify that the information contained herein is true and complete to the best of my knowledge and belief.

Dennis Tidwell
Name

OPERATOR
Position

OWNER
Company

DENNIS TIDWELL
Date

9/30/87

Date Surveyed
September 16, 1987

Registered Professional Engineer
and/or Land Surveyor

Dan R. Reddy
Certificate No.

N1 PE&LS NO. 5412

