

**WALSH**

ENGINEERING & PRODUCTION CORP.

Petroleum Engineering Consulting
Lease Management
Contract Pumping7415 East Main
Farmington, New Mexico 87402
(505) 327-4892

March 9, 1995

Mr. William J. LeMay
New Mexico Oil Conservation Division
P.O. Box 2088
Santa Fe, NM 87504-2088

RECEIVED

MAR 17 1995

Oil Conservation Division

Re: Non-Standard Gas Unit
Northwest Pipeline Corporation
Rosa Unit #125E
1670' FSL, 1035' FEL
Section 13, T31N R6W
Rio Arriba, NM
Basin Dakota and Blanco MV

Dear Mr. LeMay,

This is a request on behalf of Northwest Pipeline Corporation for administrative approval for a non-standard gas unit in the Basin Dakota and Blanco Mesa Verde pool for the referenced well. The proposed spacing unit is the east half of Section 13, T31N, R6W, which is only 223.28 acres due to a variation in the legal subdivision of the U.S. Public Land Surveys.

As the Unit Operator of the Rosa Unit, Northwest Pipeline is the only offset operator. Attached is a plat indicating the well location and proposed spacing unit.

Thank you for your consideration and approval of this application. If you have any questions please do not hesitate to call upon me.

Sincerely,

*Paul C. Thompson*Paul C. Thompson, P.E.
President, Walsh Engineering

cc: NMOCD Aztec NM
BLM Farmington NM

District I
PO Box 1980, Hobbs, NM 88241-1980
District II
PO Drawer DD, Artesia, NM 88211-0719
District III
1000 Rio Brazos Rd., Aztec, NM 87410
District IV
PO Box 2088, Santa Fe, NM 87504-2088

State of New Mexico
Energy, Minerals & Natural Resources Department

OIL CONSERVATION DIVISION
PO Box 2088
Santa Fe, NM 87504-2088

Form C-102
Revised February 21, 1994
Instructions on back
Submit to Appropriate District Office
State Lease - 4 Copies
Fee Lease - 3 Copies

☐ AMENDED REPORT

WELL LOCATION AND ACREAGE DEDICATION PLAT

1 APT Number		2 Pool Code 71599		3 Pool Name BASIN DAKOTA	
4 Property Code 008480		5 Property Name Rosa Unit			6 Well Number 125 E
7 OGRID No. 16189		8 Operator Name Northwest Pipeline Production			9 Elevation 6345'

10 Surface Location

UL or lot no.	Section	Township	Range	Lot Idn	Feet from the	North/South line	Feet from the	East/West line	County
J	13	31 N	6 W		1670'	FSL	1035'	FEL	R.A.

11 Bottom Hole Location If Different From Surface

UL or lot no.	Section	Township	Range	Lot Idn	Feet from the	North/South line	Feet from the	East/West line	County

12 Dedicated Acres 223.28	13 Joint or Infill Y	14 Consolidation Code U	15 Order No.
------------------------------	-------------------------	----------------------------	--------------

NO ALLOWABLE WILL BE ASSIGNED TO THIS COMPLETION UNTIL ALL INTERESTS HAVE BEEN CONSOLIDATED
OR A NON-STANDARD UNIT HAS BEEN APPROVED BY THE DIVISION

	<p>17 OPERATOR CERTIFICATION</p> <p>I hereby certify that the information contained herein is true and complete to the best of my knowledge and belief</p> <p><u>Paul C. Thompson</u> Signature Paul C. Thompson, P.E. (Agent) Printed Name President Walsh Engr. & Prod. Corp. Title 3/6/95 Date</p>
	<p>18 SURVEYOR CERTIFICATION</p> <p>I hereby certify that the well location shown on this plat was plotted from field notes of actual surveys made by me or under my supervision, and that the same is true and correct to the best of my belief.</p> <p>2-20-95 Date of Survey Signature and Seal of Professional Surveyor: Certificate Number</p>

District I
PO Box 1980, Hobbs, NM 88241-1980
District II
PO Drawer DD, Artesia, NM 88211-0719
District III
1000 Rio Brazos Rd., Aztec, NM 87410
District IV
PO Box 2088, Santa Fe, NM 87504-2088

State of New Mexico
Energy, Minerals & Natural Resources Department

OIL CONSERVATION DIVISION
PO Box 2088
Santa Fe, NM 87504-2088

Form C-102

Revised February 21, 1994

Instructions on back

Submit to Appropriate District Office

State Lease - 4 Copies

Fee Lease - 3 Copies

☐ AMENDED REPORT

WELL LOCATION AND ACREAGE DEDICATION PLAT

¹ API Number	² Pool Code 72319	³ Pool Name BLANCO MESA VERDE
⁴ Property Code 008480	⁵ Property Name Rosa Unit	⁶ Well Number 125 E
⁷ OGRJD No. 16189	⁸ Operator Name Northwest Pipeline Production	⁹ Elevation 6345'

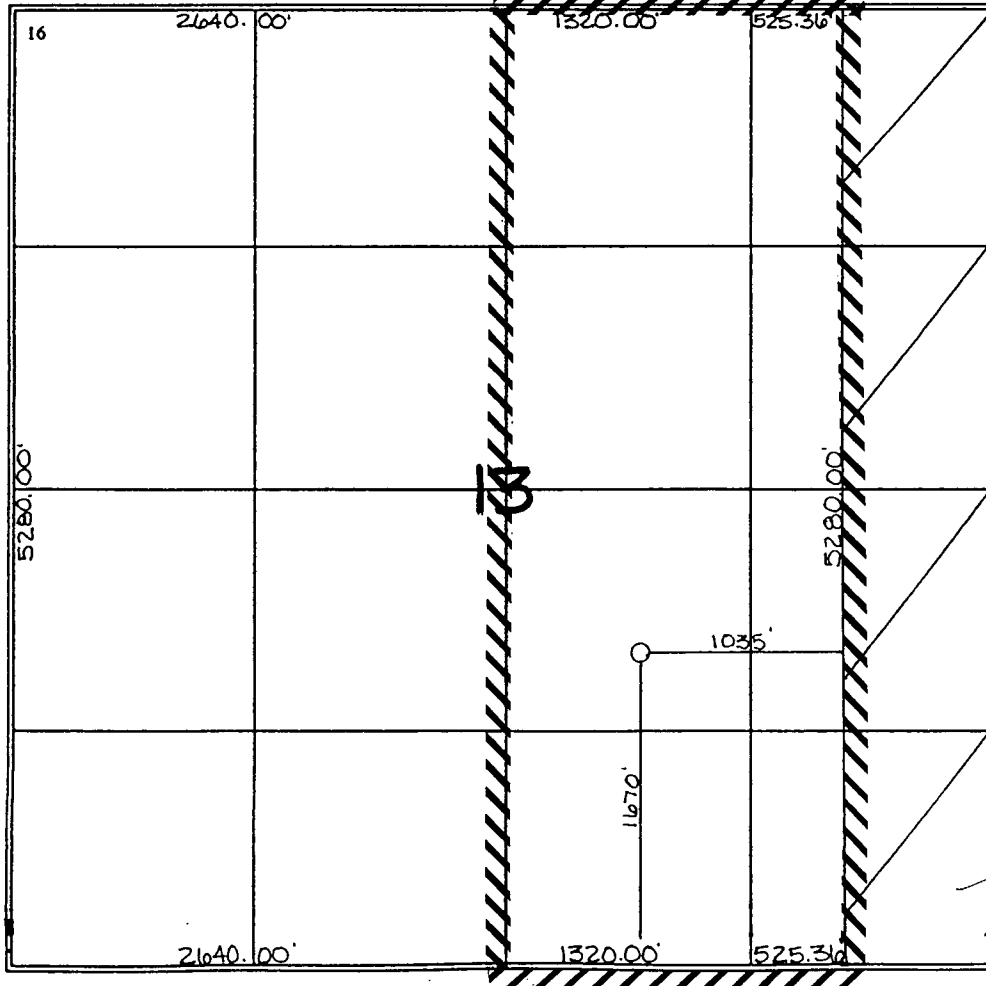
¹⁰ Surface Location

UL or lot no. J	Section 13	Township 31 N	Range 6 W	Lot Idn	Feet from the 1670'	North/South line FSL	Feet from the 1035'	East/West line FEL	County R.A.
--------------------	---------------	------------------	--------------	---------	------------------------	-------------------------	------------------------	-----------------------	----------------

¹¹ Bottom Hole Location If Different From Surface

UL or lot no.	Section	Township	Range	Lot Idn	Feet from the	North/South line	Feet from the	East/West line	County
¹² Dedicated Acres 223.28	¹³ Joint or Infill Y	¹⁴ Consolidation Code U	¹⁵ Order No.						

NO ALLOWABLE WILL BE ASSIGNED TO THIS COMPLETION UNTIL ALL INTERESTS HAVE BEEN CONSOLIDATED
OR A NON-STANDARD UNIT HAS BEEN APPROVED BY THE DIVISION



¹⁷ OPERATOR CERTIFICATION

I hereby certify that the information contained herein is true and complete to the best of my knowledge and belief

Paul C. Thompson
Signature
Paul C. Thompson, P.E. (AGENT)
Printed Name President
Walsh Engr. & Prod. Corp.
Title
3/6/95
Date

¹⁸ SURVEYOR CERTIFICATION

I hereby certify that the well location shown on this plat was plotted from field notes of actual surveys made by me or under my supervision, and that the same is true and correct to the best of my belief.

2-20-95
Date of Survey
Signature and Seal of Professional Surveyor
NEW MEXICO
8857
6857
Certificate Number