



STATE OF NEW MEXICO  
ENERGY, MINERALS AND NATURAL RESOURCES DEPARTMENT  
OIL CONSERVATION DIVISION



BRUCE KING  
GOVERNOR

December 10, 1992

POST OFFICE BOX 2088  
STATE LAND OFFICE BUILDING  
SANTA FE, NEW MEXICO 87504  
(505) 827-5800

ANITA LOCKWOOD  
CABINET SECRETARY

Redwolf Production, Inc.  
Attention: Dana L. Deventhal  
P.O. Box 5382  
Farmington, NM 87499

*Administrative Order NSP-1654*

Dear Ms. Deventhal:

Reference is made to your application dated November 2, 1992 for an exception to Rule 2 of the Special Rules and Regulations for the Bisti-Lower Gallup Oil Pool, as promulgated by Division Order No. R-1069-B, which spaces said pool on 80-acre units but limits their designation to within the N/2 or S/2 of a governmental quarter-section, for the creation of an 80.53-acre non-standard oil proration unit comprising Lots 1 and 2 (W/2 NW/4 equivalent) of Section 31, Township 25 North, Range 11 West, NMPM, San Juan County, New Mexico. Said unit to be dedicated to your E. L. (Federal) Well No. 1 to be drilled at a standard oil well location in Unit D of said Section 31.

It is our understanding that this request is necessary to off-set an existing 80-acre oil proration unit comprising the E/2 NW/4 of said Section 31 which was authorized by Division Order No. R-8354, as amended.

By authority granted me under the provisions of Division General Rule 104.D. and Division Memorandum 4-86, the above non-standard oil proration unit is hereby approved.

Sincerely,

William J. LeMay  
Director

WJL/MES/amg

cc: Oil Conservation Division - Aztec  
US Bureau of Land Management - Farmington  
File: Case No. 9040



STATE OF NEW MEXICO  
ENERGY, MINERALS AND NATURAL RESOURCES DEPARTMENT  
OIL CONSERVATION DIVISION



BRUCE KING  
GOVERNOR  
  
ANITA LOCKWOOD  
CABINET SECRETARY

November 4, 1992

POST OFFICE BOX 2088  
STATE LAND OFFICE BUILDING  
SANTA FE, NEW MEXICO 87504  
(505) 827-5800

Redwolf Production, Inc.  
P.O. Box 5382  
Farmington, NM 88499

Attention: Dana L. Deventhal

**RE: Application for non-standard oil proration unit; W/2  
NW/4 of Section 31, Township 25 North, Range 11 West,  
NMPM, Bisti-Lower Gallup Oil Pool, San Juan County.**

Dear Ms. Deventhal:

We may not process the subject application for non-standard proration unit until the required information and plats below are submitted:

- plat clearly showing the ownership of offsetting leases; and
- copy of the APD filed with the Bureau of Land Management, if any.

Sincerely,

A handwritten signature in black ink, appearing to read "Michael E. Stogner".

Michael E. Stogner  
Chief Hearing Officer/Engineer

MES/amg



## REDWOLF PRODUCTION, INC.

OIL CONSERVATION DIVISION  
RECEIVED

'92 NOV 4 AM 9 06

November 2, 1992

New Mexico Oil Conservation Division  
Post Office Box 2088  
Santa Fe, New Mexico 87504-2088  
Attn: Mr. Michael Stogner

Dear Mr. Stogner:

Redwolf Production, Inc. requests administrative approval for a nonstandard proration unit in the Bisti Lower Gallup pool, covering the W/2 of the NW/4 of Section 31, Township 25 North, Range 11 West.

This 80 acre tract is a proposed standup proration unit. The Bisti Lower Gallup Pool designates drilling units as laydowns. However, the E/2 of the NW/4 is already developed as a standup 80 acre tract by Giant Exploration and Production Co. At the time that the Ando Hixon No. 1 and No. 2 were drilled, the W/2 of the NW/4 was unleased Federal minerals. Redwolf Production has since leased this interest, and wishes to develop these reserves.

The Bisti Lower Gallup Pool Rules are silent with respect to obtaining an exception to the standard proration unit, therefore we feel that the attached memo allows for administrative approval in a case such as ours.

The only offset operator is Giant Exploration and Production Co. I have attached a letter from Giant waiving any objection to this nonstandard proration unit.

The Bureau of Land Management has the APD for the subject well in suspense until November 28, 1992--pending approval of this nonstandard proration unit. A response by this date would be greatly appreciated. Thank you for your help in this matter.

Sincerely,

Dana L. Delventhal  
Vice President



TONEY ANAYA  
GOVERNOR

STATE OF NEW MEXICO  
ENERGY AND MINERALS DEPARTMENT  
OIL CONSERVATION DIVISION

June 2, 1986

POST OFFICE BOX 2088  
STATE LAND OFFICE BUILDING  
SANTA FE, NEW MEXICO 87501-2088  
(505) 827-5800

MEMORANDUM NO. 4-86

TO: ALL OPERATORS AND INTERESTED PARTIES  
FROM: R. L. STAMETS, DIRECTOR *RLS*  
SUBJECT: CLARIFICATION OF ADMINISTRATIVE APPROVAL PROCESSES IN CERTAIN  
POOLS WITH SPECIAL RULES

Division Rule 1 provides in part that: "Special rules, regulations and orders have been and will be issued when requested and shall prevail as against General Rules, Regulations and Orders if in conflict therewith. However, whenever these General Rules do not conflict with special rules heretofore or hereafter adopted, these General Rules shall apply."

Over the years, many special pool rules have been written. Many of these contained special rules providing for administrative exceptions to such matters as location requirements or spacing unit size while others did not. One prevailing opinion is that the intent of those special rules without administrative exception provisions was to preclude such exceptions. The counter opinion is that when read with Rule 1, if nothing is said, then the administrative exception provisions in the General Rules shall apply.

Notice is hereby provided that it is henceforth to be Division policy to utilize the administrative exceptions or approval procedures of the General Rules when special pool rules are silent as to such exceptions. This policy will save both the Division and operators the cost of unnecessary hearings.

Any person who is aware of any pool with special rules which should preclude any of the administrative exceptions or approvals provided in the General Rules should notify this office of such situation at the earliest possible date, providing the reasoning for precluding administrative exceptions. Thereafter, we would suspend this policy for such pool and schedule a case to modify such special rules to incorporate the necessary prohibitions.

RLS:dp



## REDWOLF PRODUCTION, INC.

October 22, 1992

Giant Exploration and Production Co.  
P. O. Box 2810  
Farmington, NM 87499  
Attn: Mr. John Corbett

Dear Mr. Corbett:

Redwolf Production Inc. is filing an application with the New Mexico Oil Conservation Division for a nonstandard proration unit for the Bisti Lower Gallup pool covering the W/2 of the NW/4 of Section 31, T25N, R11W, San Juan County, New Mexico. This 80 acre tract will be a standup proration unit since the E/2 of the NW/4 was drilled as a standup 80 acre proration unit by Giant Exploration and Production Co.

If Giant Exploration and Production has no objection to this nonstandard proration unit, could you please sign and return one copy of this letter to the letterhead address. Thank you for your help in this matter. If you have any questions, please contact me at (505) 326-4125.

Sincerely,

*Bruce E. Delventhal*  
Bruce E. Delventhal  
President

WAIVE OBJECTION:

*John C. Corbett*  
\_\_\_\_\_  
Signature John C. Corbett

Vice President                      Oct. 26, 1992  
\_\_\_\_\_  
Title                                      Date

STATE OF NEW MEXICO  
ENERGY AND MINERALS DEPARTMENT  
OIL CONSERVATION DIVISION

IN THE MATTER OF THE HEARING  
CALLED BY THE OIL CONSERVATION  
DIVISION FOR THE PURPOSE OF  
CONSIDERING:

CASE NO. 9040  
Order No. R-8354

APPLICATION OF HIXON DEVELOPMENT  
COMPANY FOR A NON-STANDARD OIL  
PRORATION UNIT, SAN JUAN COUNTY,  
NEW MEXICO.

ORDER OF THE DIVISION

BY THE DIVISION:

This cause came on for hearing at 8:15 a.m. on November 19, 1986, at Santa Fe, New Mexico, before Examiner David R. Catanach.

NOW, on this 1st day of December, 1986, the Division Director, having considered the testimony, the record, and the recommendations of the Examiner, and being fully advised in the premises,

FINDS THAT:

(1) Due public notice having been given as required by law, the Division has jurisdiction of this cause and the subject matter thereof.

(2) By Division Order No. R-1069-B, dated January 17, 1958, the Division promulgated Special Pool Rules for the Bisti-Lower Gallup Oil Pool, San Juan County, New Mexico, including a provision for 80-acre spacing and proration units and a provision requiring the proration units consist of the N/2 or S/2 of a governmental quarter section.

(3) The applicant, Hixon Development Company, seeks approval of an 80-acre non-standard oil proration unit within said pool consisting of the E/2 NW/4 of Section 31, Township 25 North, Range 11 West, NMPM, San Juan County, New Mexico, to be dedicated to a well to be drilled at a standard location 990 feet from the North line and 1980 feet from the East line of said Section 31.

(4) Due to an expiring lease, the applicant must commence the drilling of said well by November 30, 1986.

(5) The remaining acreage in Section 31 consisting of the S/2, NE/4, and the W/2 NW/4 is currently unleased.

(6) The entire non-standard proration unit may reasonably be presumed productive of oil from the Bisti-Lower Gallup Oil Pool and the entire non-standard oil proration unit can be efficiently and economically drained and developed by the aforesaid well.

(7) Approval of the subject application will afford the applicant the opportunity to produce his just and equitable share of the oil in the Bisti-Lower Gallup Oil Pool, will prevent the economic loss caused by the drilling of unnecessary wells, avoid the augmentation of risk arising from the drilling of an excessive number of wells, and will otherwise prevent waste and protect correlative rights.

(8) Approval of the subject application should not preclude the orderly development of the Bisti-Lower Gallup Oil Pool.

IT IS THEREFORE ORDERED THAT:

(1) The application of Hixon Development Company for an 80-acre non-standard oil proration unit in the Bisti-Lower Gallup Oil Pool comprising the E/2 NW/4 of Section 31, Township 25 North, Range 11 West, NMPM, San Juan County, New Mexico, is hereby approved, said unit to be dedicated to a well to be drilled at a standard location 990 feet from the North line and 1980 feet from the East line of said Section 31.

(2) Jurisdiction of this cause is retained for the entry of such further orders as the Division may deem necessary.

DONE at Santa Fe, New Mexico, on the day and year hereinabove designated.

STATE OF NEW MEXICO  
OIL CONSERVATION DIVISION



R. L. STAMETS  
Director

S E A L  
fd/

STATE OF NEW MEXICO  
ENERGY, MINERALS AND NATURAL RESOURCES DEPARTMENT  
OIL CONSERVATION DIVISION

CASE NO. 9040  
ORDER NO. R-8354-A

APPLICATION OF HIXON DEVELOPMENT  
COMPANY FOR A NON-STANDARD OIL  
PRORATION UNIT, SAN JUAN COUNTY,  
NEW MEXICO

NUNC PRO TUNC ORDER

BY THE DIVISION:

It appearing to the Division that Order No. R-8354, dated December 1, 1986, does not correctly state the intended order of the Division,

IT IS THEREFORE ORDERED THAT:

(1) Finding Paragraph No. (3) on Page 1 of Division Order No. R-8354 be and the same is hereby amended to read in its entirety as follows:

"(3) The applicant, Hixon Development Company, seeks approval of an 80-acre non-standard oil proration unit within said pool consisting of the E/2 NW/4 of Section 31, Township 25 North, Range 11 West, NMPM, San Juan County, New Mexico, to be dedicated to a well to be drilled at a standard location 990 feet from the North line and 1980 feet from the West line of said Section 31."

(2) Decretory Paragraph No. (1) on Page 2 of said Order No. R-8354 be and the same is hereby amended to read in its entirety as follows:

"(1) The application of Hixon Development Company for an 80-acre non-standard oil proration unit in the Bisti-Lower Gallup Oil Pool comprising the E/2 NW/4 of Section 31, Township 25 North, Range 11 West, NMPM, San Juan County, New Mexico, is hereby approved, said unit to be dedicated to a well to be drilled at a standard location 990 feet from the North line and 1980 feet from the West line of said Section 31."

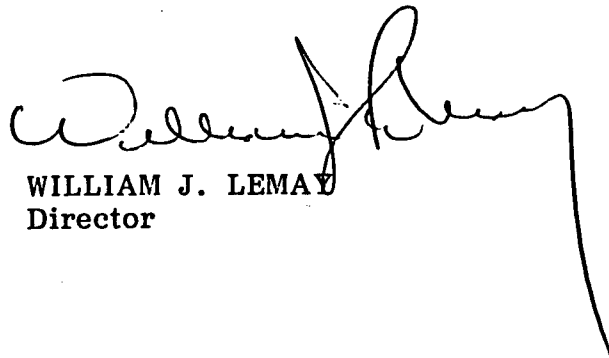
(3) The corrections set forth in this order be entered nunc pro tunc as of December 1, 1986.



Page 2  
Case No. 9040  
Order No. R-8354-A

DONE at Santa Fe, New Mexico, on this 8th day of April, 1988.

STATE OF NEW MEXICO  
OIL CONSERVATION DIVISION

A handwritten signature in black ink, appearing to read 'William J. Lemay', is written over the printed name. The signature is fluid and cursive, with a long, sweeping line extending from the end of the name.

WILLIAM J. LEMAY  
Director

S E A L



# REDWOLF PRODUCTION, INC.

(326-4125)

OIL CONSERVATION DIVISION  
RECEIVED

'92 NOV 10 AM 9 45

November 9, 1992

New Mexico Oil Conservation Division  
Post Office Box 2088  
Santa Fe, New Mexico 87504-2088  
Attn: Mr. Michael Stogner

RE: Application for non-standard oil proration unit  
W/2 of NW/4 of Section 31, T25N, R11 W  
Bisti Lower Gallup Pool

Dear Mr. Stogner:

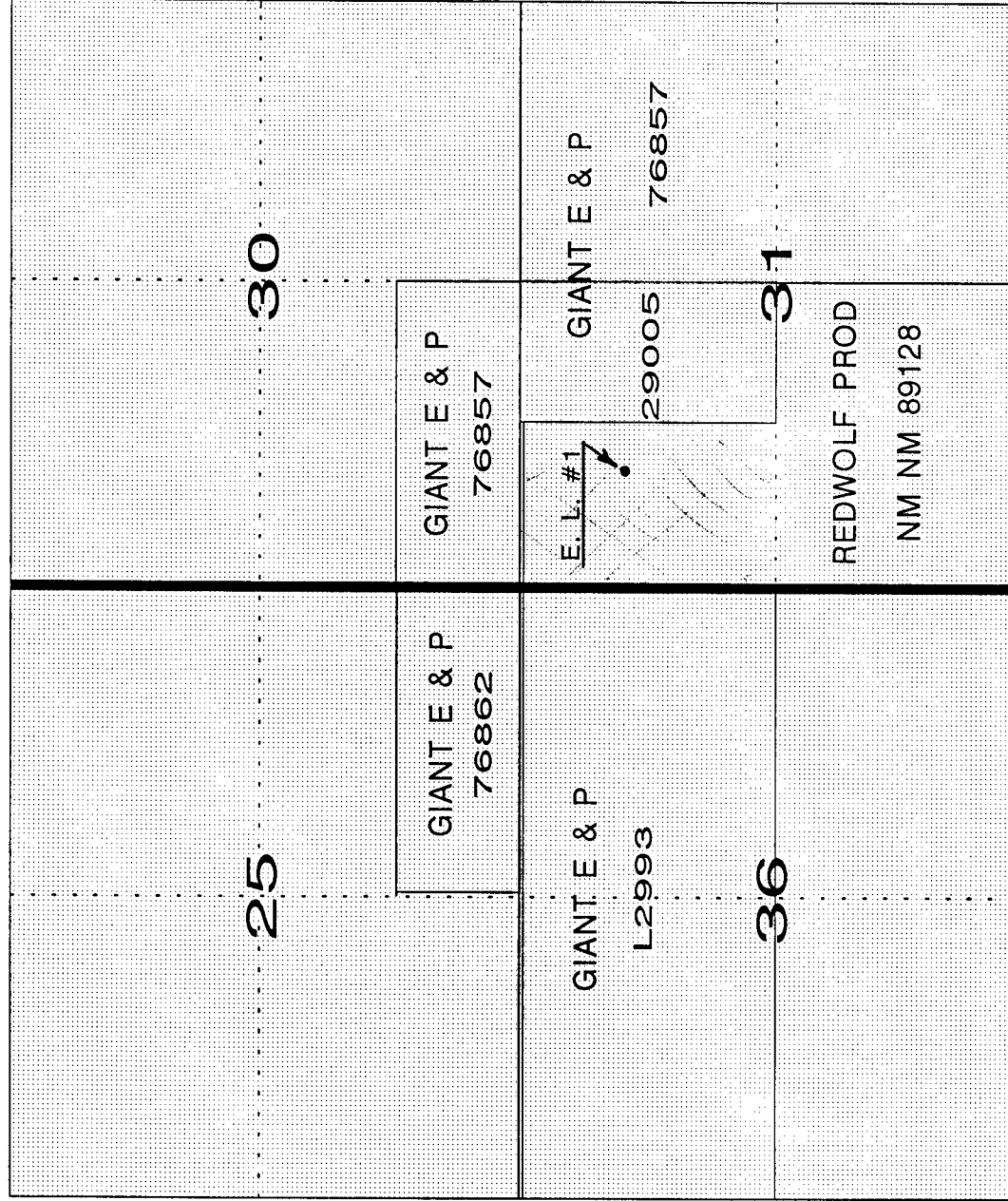
Please find enclosed an offset lease ownership map and a copy of the APD filed with the Bureau of Land Management for the E. L. #1 well, as requested in your letter of November 4, 1992.

If I can be of further assistance, please contact me at (505) 326-4125. Thank you for your help in this matter.

Sincerely,

Dana L. Delventhal  
Vice President

# OFFSET LEASE OWNERSHIP



T 25 N

R 12 W

R 11 W

UNITED STATES  
DEPARTMENT OF THE INTERIOR  
BUREAU OF LAND MANAGEMENT

APPLICATION FOR PERMIT TO DRILL, DEEPEN, OR PLUG BACK

1a. TYPE OF WORK

DRILL ☒

DEEPEN ☐

PLUG BACK ☐

b. TYPE OF WELL

OIL  
WELL ☒

GAS  
WELL ☐

OTHER

SINGLE  
ZONE ☒

MULTIPLE  
ZONE ☐

2. NAME OF OPERATOR

Redwolf Production, Inc.

3. ADDRESS OF OPERATOR

P. O. Box 5382 Farmington, NM 87499

4. LOCATION OF WELL (Report location clearly and in accordance with any State requirements.)\*

At surface

929' FNL, 867' FNL

At proposed prod. zone

Same

14. DISTANCE IN MILES AND DIRECTION FROM NEAREST TOWN OR POST OFFICE\*

33 miles Southeast of Farmington, NM

15. DISTANCE FROM PROPOSED\*

LOCATION TO NEAREST

PROPERTY OR LEASE LINE, FT.

(Also to nearest drlg. unit line, if any)

867'

18. DISTANCE FROM PROPOSED LOCATION\*

TO NEAREST WELL, DRILLING, COMPLETED,  
OR APPLIED FOR, ON THIS LEASE, FT.

16. NO. OF ACRES IN LEASE

240.72

19. PROPOSED DEPTH

4970'

17. NO. OF ACRES ASSIGNED  
TO THIS WELL

80

20. ROTARY OR CABLE TOOLS

Rotary

21. ELEVATIONS (Show whether DF, RT, GR, etc.)

6414' GR

22. APPROX. DATE WORK WILL START\*

As soon as permitted

23.

PROPOSED CASING AND CEMENTING PROGRAM

SIZE OF HOLE	SIZE OF CASING	WEIGHT PER FOOT	SETTING DEPTH	QUANTITY OF CEMENT
12 1/4"	8 5/8"	24 $\frac{1}{2}$	240'	150 sx (circ. to surface)
7 7/8"	5 1/2"	15.5 $\frac{1}{2}$	4970'	400 sx (circ. to surface)

TIGHT HOLE. PLEASE KEEP CONFIDENTIAL.

Notice of Staking submitted 9/8/92.

IN ABOVE SPACE DESCRIBE PROPOSED PROGRAM: If proposal is to deepen or plug back, give data on present productive zone and proposed new productive zone. If proposal is to drill or deepen directionally, give pertinent data on subsurface locations and measured and true vertical depths. Give blowout preventer program, if any.

24.

SIGNED Bruce C. Delventhal TITLE Engineer DATE Oct. 7, 1992

(This space for Federal or State office use)

PERMIT NO. \_\_\_\_\_ APPROVAL DATE \_\_\_\_\_

APPROVED BY \_\_\_\_\_ TITLE \_\_\_\_\_ DATE \_\_\_\_\_  
CONDITIONS OF APPROVAL, IF ANY:

\*See Instructions On Reverse Side

Title 18 U.S.C. Section 1001, makes it a crime for any person knowingly and willfully to make to any department or agency of the United States any false, fictitious or fraudulent statements or representations as to any matter within its jurisdiction.

# OIL CONSERVATION DIVISION

**DISTRICT I**  
P.O. Box 1980, Hobbs, NM 88240

P.O. Box 2088  
Santa Fe, New Mexico 87504-2088

**DISTRICT II**  
P.O. Drawer DD, Artesia, NM 88210

**DISTRICT III**  
1000 Rio Brazos Rd., Aztec, NM 87410

## WELL LOCATION AND ACREAGE DEDICATION PLAT

All Distances must be from the outer boundaries of the section

Operator REDWOLF PRODUCTION, INC.		Lease E.L.		Well No. 1	
Unit Letter D	Section 31	Township T.25 N.	Range R.11 W.	County SAN JUAN	
Actual Footage Location of Well: 929 feet from the NORTH line and 867 feet from the WEST line					
Ground level Elev. 6414	Producing Formation Gallup		Pool Bisti Lower Gallup		Dedicated Acreage: 80 Acres

1. Outline the acreage dedicated to the subject well by colored pencil or hatchure marks on the plat below.
2. If more than one lease is dedicated to the well, outline each and identify the ownership thereof (both as to working interest and royalty).
3. If more than one lease of different ownership is dedicated to the well, have the interest of all owners been consolidated by communitization, unitization, force-pooling, etc.?
- ☐ Yes      ☐ No      If answer is "yes" type of consolidation \_\_\_\_\_
- If answer is "no" list the owners and tract descriptions which have actually been consolidated. (Use reverse side of this form if necessary.) \_\_\_\_\_
- No allowable will be assigned to the well until all interests have been consolidated (by communitization, unitization, forced-pooling, or otherwise) or until a non-standard unit, eliminating such interest, has been approved by the Division.

1) 40.25

N 89-59 W

2643.70'

2639.55'

929'

867'

NM NM 89128

② 40.28

NORTH

SEC. 31

③ 40.22

④ 40.35

0 330 660 990 1320 1650 1980 2310 2640 2000 1500 1000 500

### OPERATOR CERTIFICATION

I hereby certify that the information contained herein is true and complete to the best of my knowledge and belief.

Signature \_\_\_\_\_

Bruce E Delventhal

Printed Name \_\_\_\_\_

Eruce E. Delventhal

Position

Engineer

Company	
---------	--

Redwolf Production, Inc.

Date \_\_\_\_\_

October 7, 1992

### SURVEYOR CERTIFICATION

I hereby certify that the well location shown on this plat was plotted from field notes of actual surveys made by me or under my supervision, and that the same is true and correct to the best of my knowledge and belief.

Date Surveyed

SEPTEMBER 4 1992

Signature & Seal of Professional Surveyor 8894

ROY A. RUSSELL  
REGISTERED PROFESSIONAL LAND SURVEYOR

Certificate No.

~~8894~~

## Drilling Program

### 1. Formation Tops

The estimated tops of important geologic markers are:

<u>Formation Name</u>	<u>GL Depth</u>	<u>KB Depth</u>	<u>SS Elev</u>
Fruitland	1111'	1123'	+5303
Pictured Cliffs	1129'	1141'	+5285
Cliffhouse	1895'	1907'	+4519
Menefee	2393'	2405'	+4021
Point Lookout	3593'	3605'	+2821
Mancos	3736'	3748'	+2678
Gallup	4643'	4655'	+1771
Total Depth (TD)	4958'	4970'	+1456

\*All elevations reflect the ungraded ground level of 6414'.

### 2. Notable Zones

#### Oil and Gas Zones

Fruitland (1123')  
Pictured Cliffs (1141')

The primary objective is the Gallup. Completion may require fracturing. The entire wellbore will be cased. Water zones will be protected with casing, cement, and weighted mud. Oil and gas shows will be tested for commercial potential based on the well site geologist's recommendations.

### 3. Pressure Control

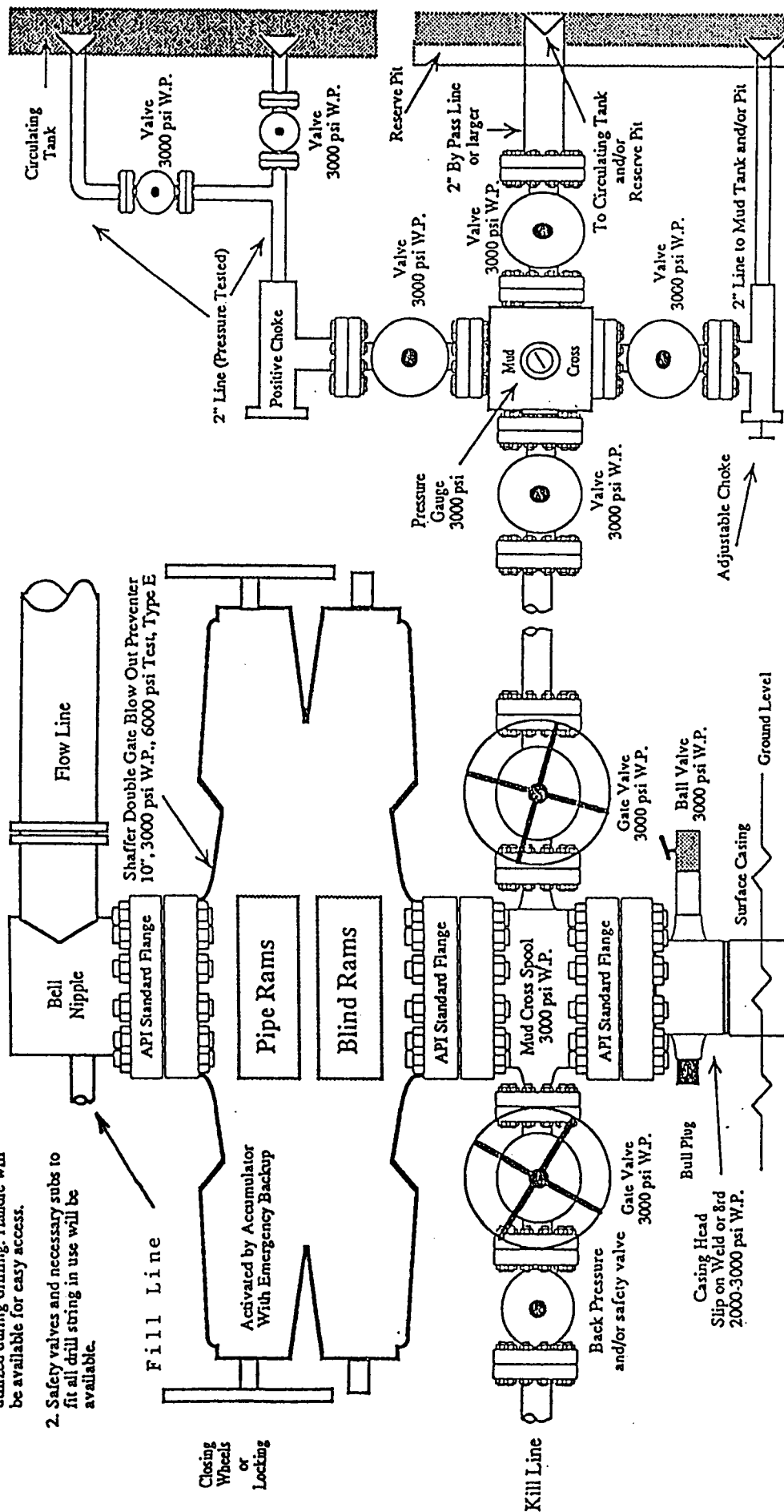
BOP systems will follow Onshore Order #2. The drilling contract has not yet been awarded, thus the exact BOP model to be used is not yet known. A typical model is shown on the attached page.

Once out from under the surface casing, a minimum 2000 psi BOP and choke manifold system will be used. BOP controls will be installed before drilling the surface casing plug and used until the well is completed or abandoned.

# Pressure Control Equipment

Note: 1. An upper Kelly cock valve will be utilized during drilling. Handle will be available for easy access.

2. Safety valves and necessary subs to fit all drill string in use will be available.



Note: This equipment is designed to meet requirements for a 2-M rating standard per 43 CFR part 3160 (amended). Proper operation and testing of equipment will be carried out per standard. 2,000 psi equipment can be substituted in the drawing to meet minimum requirements per standard.

Pressure tests to 1,500 psi will be conducted with a BOP tester. All BOP mechanical and pressure tests will be recorded on the driller's log. BOPs will be inspected and operated at least daily to assure good mechanical working order. The inspection will be recorded on the daily drilling report.

4. Casing and Cement

<u>Hole Size</u>	<u>OD</u>	<u>Weight (lb/ft)</u>	<u>Grade</u>	<u>Depth</u>
12 1/4"	8 5/8"	24	J-55	240'
7 7/8"	5 1/2"	15.5	K-55	4970'

Surface casing will be cemented to surface with 150 sx (177 cf) of Class B cement containing 2% CaCl. Production casing will be cemented to surface in one stage using 250 sx (968 cf) of Class B cement containing 3% Sodium Metasilicate followed by 150 sx (177 cf) of Class B cement containing 2 % CaCl. The entire wellbore will be cased. Water zones will be protected with casing, cement, and weighted mud.

5. Mud Program

The proposed mud program is:

<u>Depth</u>	<u>Type</u>	<u>ppg</u>	<u>Vis(cp)</u>	<u>Fl(cc)</u>
0-240'	Spud mud & gel lime	8.8	50	N/A
240'-TD	LSND	9.0	45	10

6. Coring, Testing, and Logging

No cores are planned. The following logs are likely to be run:

Dual Induction, Formation Density,  
Compensated Neutron, SP, Gamma Ray

7. Downhole Conditions

Neither abnormal temperatures nor hydrogen sulfide are anticipated. Maximum pressure will be approximately 1,500 psi.



8. Other Information

It is expected to require 15 days to drill and complete this well.

## Surface Use Plan

### 1. Directions and Existing Roads

From Farmington, travel south on highway 371 for approximately 5.2 mi. Then turn left at NAPI headquarters and travel 12.4 mi. Then turn left on CR 7100 and travel 3.7 mi. Then turn right on CR 7125 and travel 6.6 mi. Then turn left on CR 7260 and travel 0.4 mi. Then turn right on CR 7280 and travel 1.1 mi. Then turn right onto existing oilfield road. Then travel 1.1 mi and turn left onto the well access road (on lease).

Existing roads will not need any upgrading, other than blading to remove ruts. Roads will be maintained to a standard at least equal to their present condition.

### 2. Road to be Built

Approximately 1650' of new road will be built.

### 3. Existing Wells

According to a file search of NMOCD records, there are no water, disposal, or injection wells within a one mile radius. There are 4 gas and/or oil wells within a one mile radius.

### 4. Proposed Production Facilities

The exact type and layout of the production facilities are not now known. It is expected that they will include a pumping unit, separator, tank battery, dehydrator, meter run, and production pit. All will be painted a desert sand color.

### 5. Water Supply

Water will be obtained at Hilltop Liquor.

6. Construction Materials and Methods

Native soil and rock on the location and on the access route will be used for construction. No material will be taken from public land. All slopes will be 3:1 finished slope.

7. Waste Disposal

The reserve pit will be fenced on 3 sides with woven wire fence topped with barbed wire. The 4th side will be fenced once the rig moves off. The fence will be kept in good repair while the pit dries. Once dry, the contents of the reserve pit will be buried in place.

All trash will be placed in a portable trash cage. It will be hauled to an approved landfill.

Human waste will be disposed of in 10' deep ratholes under trailers or in chemical toilets. Ratholes will be immediately filled when the trailers are removed.

8. Ancillary Facilities

There will be no air strips or camps. Camper trailers may be on location for the company man, tool pusher, and mud loggers.

9. Surface Owner

This well and access are on land managed by the Bureau of Land Management.

10. Well Site Layout

Attached are drawings of the well pad, cross sections, cut and fill diagrams, reserve pit, trash cage, access road onto the location, parking, living facilities, and rig orientation.

11. Reclamation

Pad reclamation will begin once the reserve pit is dry. It usually takes a year for a reserve pit to fully evaporate. Disturbed areas will be recontoured to a natural shape to blend with the surrounding topography. An approved seed mixture will be drilled 0.5-0.75" deep. If broadcast, the rate will be doubled. A harrow or cable will be dragged over the area to assure seed cover whichever method is used.

12. Other Information

It is a 35 minute drive to Farmington's San Juan Regional Medical Center. It is located in southwest Farmington at 801 West Maple. The phone number is (505) 325-5011.

13. Representation

Anyone having questions concerning this APD should call:

Bruce E. Delventhal  
P. O. Box 5382  
Farmington, NM 87499  
(505) 326-4125

## CERTIFICATIONS

Redwolf Production, Inc. has the necessary consents from the proper lease owners to conduct lease operations in conjunction with this well. Bond coverage pursuant to 43 CFR 3104 for lease activities and operations is being provided by Redwolf Production, Inc.

I hereby certify that I, or persons under my direct supervision, have inspected the proposed drill site and access route; that I am familiar with the conditions which currently exist; that the statements made in this plan are, to the best of my knowledge, true and correct; and that the work associated with operations proposed herein will be performed by Redwolf Production, Inc. and its contractors and subcontractors in conformity with this plan and the terms and conditions under which it is approved. This statement is subject to the provisions of 18 U.S.C. 1001 for the filing of a false statement.

Bruce E. Delventhal, Engineer

Signature and Title

10/7/92

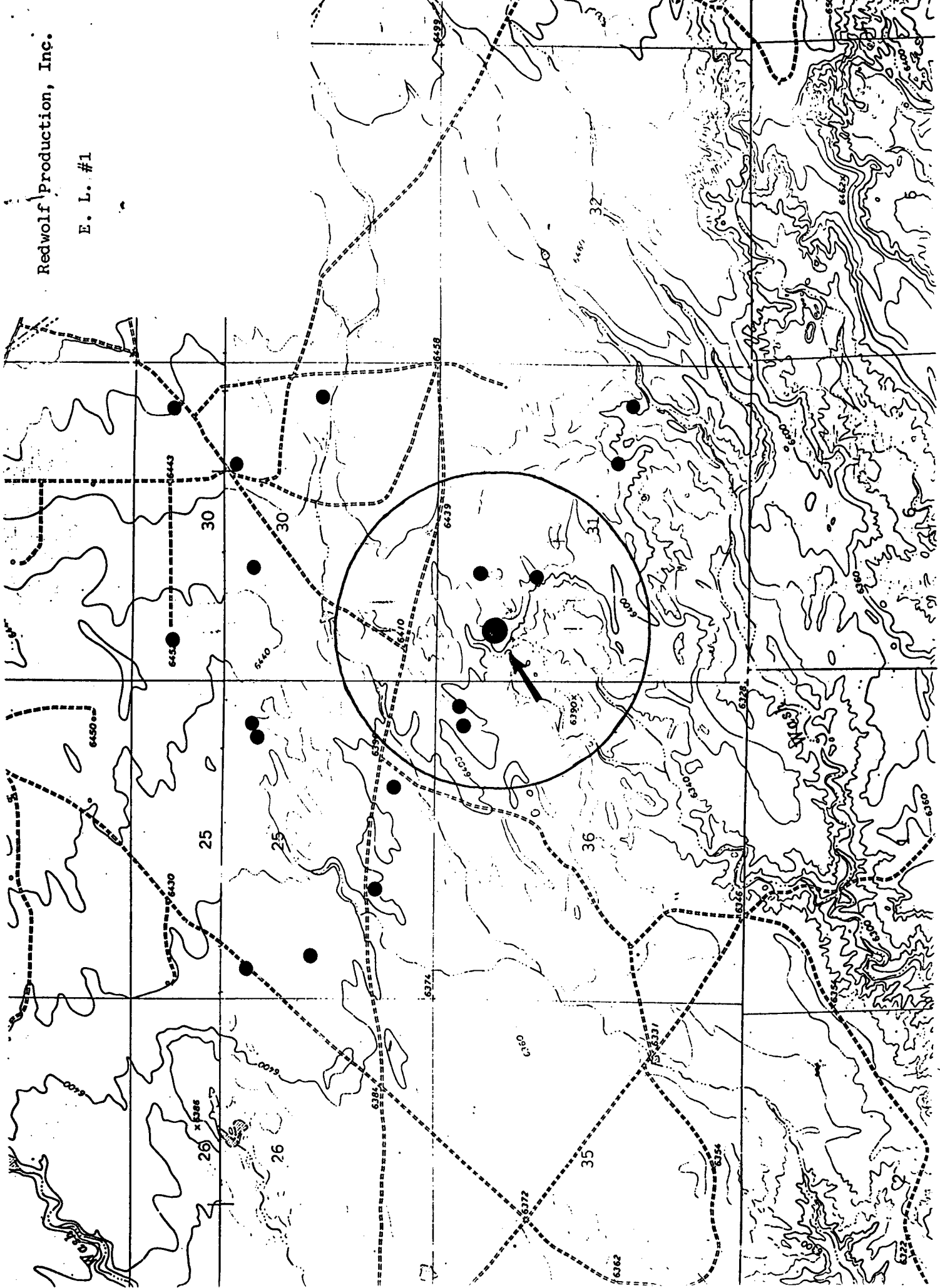
Date

Topographic map showing a proposed pipeline route (thick black line) and a well location (black dot). The map includes contour lines, place names like Gallegos Canyon, West Fork Gallegos Canyon, and Black Hill, and a grid with coordinates (R 11 W, R 12 W, R 13 W; T 28 N, T 29 N). A scale bar indicates 0 to 450,000 feet. The text "Redwolf Production, Inc." and "E. L. #1" is printed on the map.

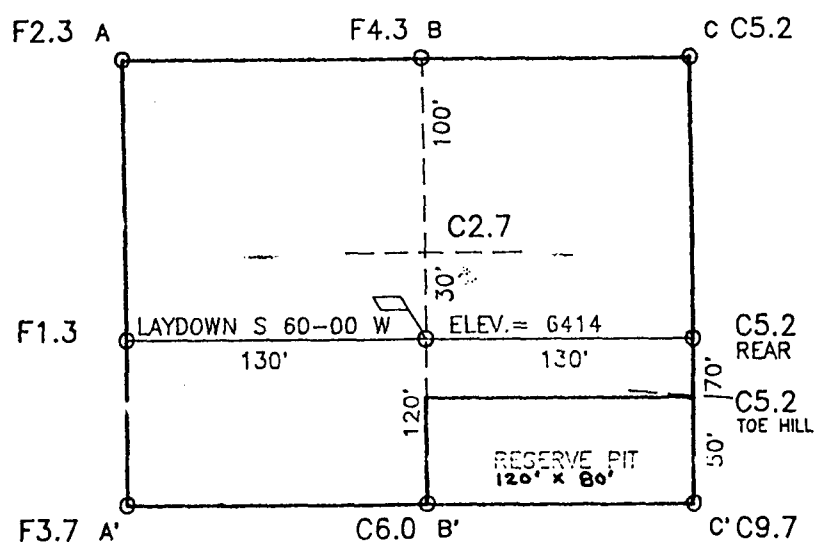
E. L. #1

Redwolf Production, Inc.

E. L. #1



ELEVATION: 6414



ELEV.	A-A'	C/L
6440		
6430		
6420		
6410		
6400		
6390		

ELEV.	B-B'	C/L
6440		
6430		
6420		
6410		
6400		
6390		

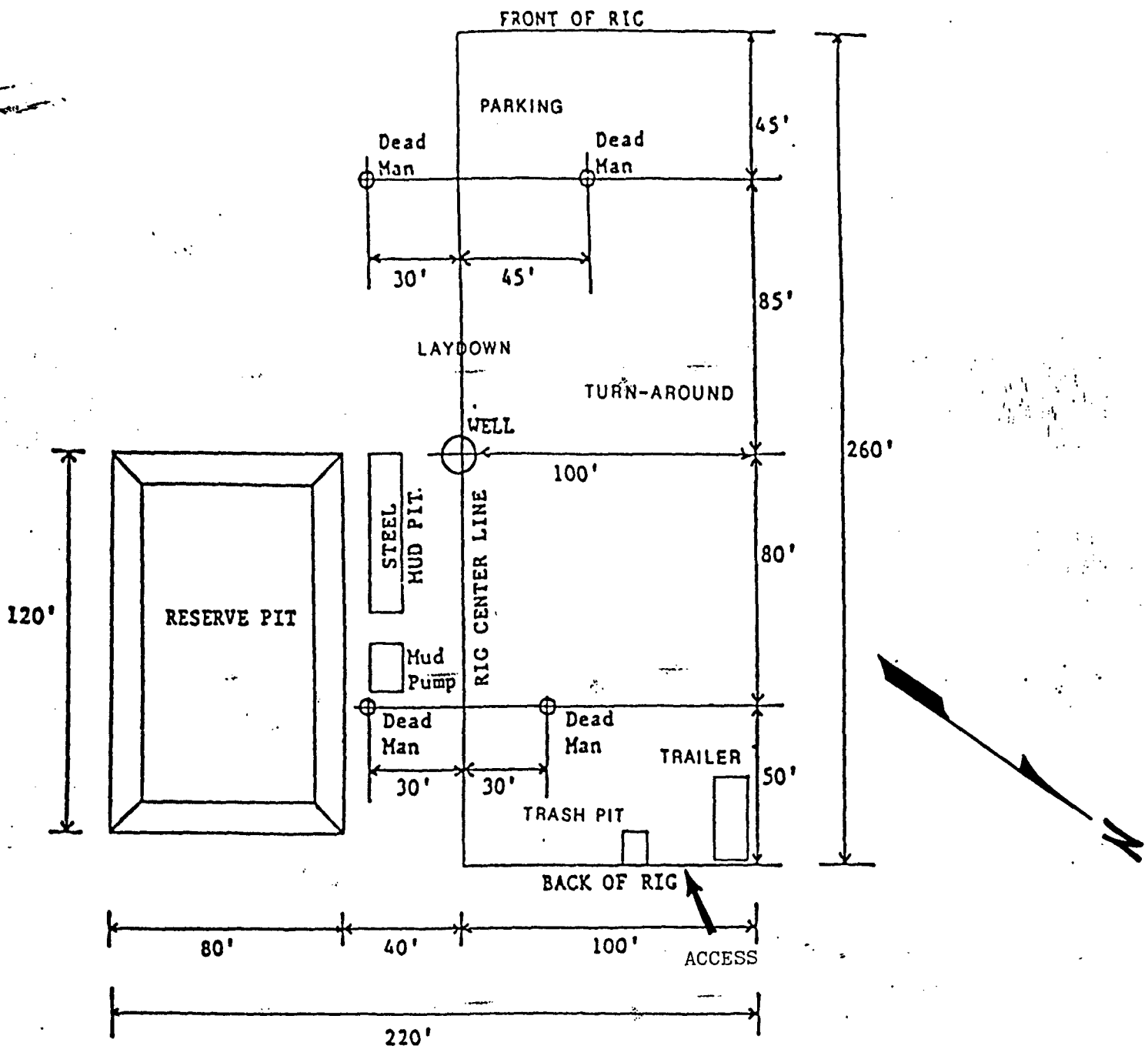
ELEV.	C-C'	C/L
6440		
6430		
6420		
6410		
6400		
6390		



Daggett Surveying, Inc.

3539 E. 30th. Street Suite No. 7B Ph. (505) 326-1772  
Farmington, New Mexico 87401





Redwolf Production, Inc.

E. L. #1