

NSP 10/5/98

FALCON CREEK RESOURCES, INC.

621 17th Street, Suite 1800, Denver, Colorado 80293-0621

(303) 675-0007 (303) 675-0008 Facsimile

September 10, 1998

SEP 14 1998

Oil Conservation Division
2040 Pacheco St.
Santa Fe, New Mexico 87505

RE: Application for Non-Standard Proration Unit
FCR 20 State #1
660' FNL, 1750' FWL
Section 20, T20S, R36E
Lea County, New Mexico

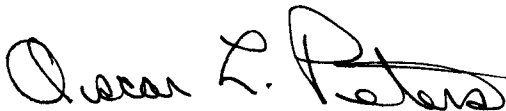
Gentlemen:

Please accept this letter as an Application for Non-Standard Spacing Unit. As required, we enclosed a Form C-102 showing the spacing requested along with a list of affected parties. All offset leasehold owners have been notified of this application by certified mail.

We are requesting a 120 acre spacing unit. This well appears to be a gas well producing from the Lower Seven Rivers formation. An existing oil well, producing from the Upper Seven Rivers, is located in the NW quarter of this quarter section. It would not only be prudent for Falcon Creek Resources, but also the State of New Mexico to produce these intervals separately.

Please advise if you have any questions, or need additional information. We appreciate your prompt attention with this matter.

Sincerely,



Oscar L. Peters
District Operations Engineer

DISTRICT I

P.O. Box 1980, Hobbs, NM 88241-1980

DISTRICT II

P.O. Drawer DD, Artesia, NM 88211-0719

DISTRICT III

1000 Rio Brazos Rd., Aztec, NM 87410

DISTRICT IV

P.O. BOX 2088, SANTA FE, N.M. 87504-2088

State of New Mexico

Energy, Minerals and Natural Resources Department

Form C-102

Revised February 10, 1994

Submit to Appropriate District Office

State Lease - 4 Copies

Fee Lease - 3 Copies

OIL CONSERVATION DIVISION

P.O. Box 2088

Santa Fe, New Mexico 87504-2088

☐ AMENDED REPORT

WELL LOCATION AND ACREAGE DEDICATION PLAT

API Number	Pool Code	Pool Name
Property Code	Property Name FCR 20 STATE	Well Number 1
OGRID No.	Operator Name FALCON CREEK RESOURCES, INC.	Elevation 3629

Surface Location

UL or lot No.	Section	Township	Range	Lot Idn	Feet from the	North/South line	Feet from the	East/West line	County
C	20	20 S	36 E		660	NORTH	1750	WEST	LEA

Bottom Hole Location If Different From Surface

UL or lot No.	Section	Township	Range	Lot Idn	Feet from the	North/South line	Feet from the	East/West line	County

Dedicated Acres	Joint or Infill	Consolidation Code	Order No.

NO ALLOWABLE WILL BE ASSIGNED TO THIS COMPLETION UNTIL ALL INTERESTS HAVE BEEN CONSOLIDATED
OR A NON-STANDARD UNIT HAS BEEN APPROVED BY THE DIVISION

	OPERATOR CERTIFICATION I hereby certify the the information contained herein is true and complete to the best of my knowledge and belief. Signature Oscar L. Peters Printed Name District Operations Engineer Title September 9, 1998 Date	
	SURVEYOR CERTIFICATION I hereby certify that the well location shown on this plat was plotted from field notes of actual surveys made by me or under my supervision, and that the same is true and correct to the best of my belief. JULY 14, 1998 Date Surveyed Signature & Seal of Professional Surveyor Certificate No. RONALD J. EIDSON 3239 RONALD J. EIDSON 12641 McDONALD 12185	

VICINITY MAP



SCALE: 1" = 2 MILES

SEC. 20 TWP. 20-S RGE. 36-E

SURVEY N.M.P.M.

COUNTY _____ LEA _____

DESCRIPTION 660' FNL & 1750' FWL

ELEVATION 3629

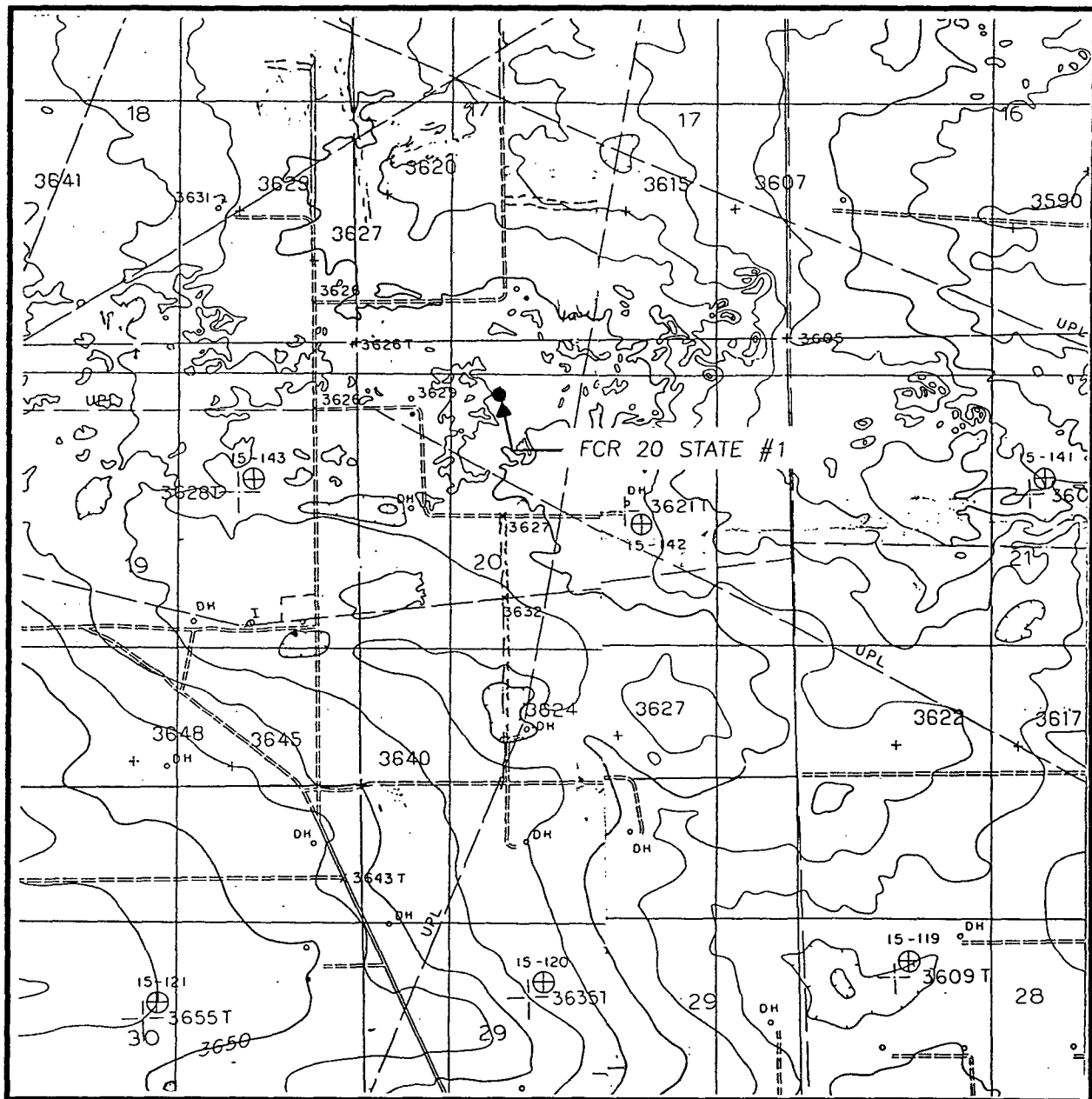
OPERATOR FALCON CREEK RESOURCES, INC.

LEASE FCR 20 STATE

**JOHN WEST ENGINEERING
HOBBS, NEW MEXICO**

(505) 393-3117

LOCATION VERIFICATION MAP



NOTIFICATION FOR NON-STANDERD PRORATION UNIT
FCR 20 State #1

TOWNSHIP 20 SOUTH, RANGE 36 EAST

Section 17: S/2

Amerada Hess Corporation
P.O. Box 2040
Houston, TX 77252-2040

TOWNSHIP 20 SOUTH, RANGE 36 EAST

Section 18: E/2SE

Boyd & McWilliams Energy Group, Inc.
550 West Texas, Suite 704
Midland, TX 79701

TOWNSHIP 20 SOUTH, RANGE 36 EAST

Section 18: W/2SE

Phillips Petroleum Company
4001 Penbrook
Odessa, TX

TOWNSHIP 20 SOUTH, RANGE 36 EAST

Section 19: NE, N/2SE

Altura Energy, LTD
P.O. Box 4294
Houston, TX 77210-4294

Eagle K Production Company
P.O. Box 80451
Midland, TX 79708

TOWNSHIP 20 SOUTH, RANGE 36 EAST

Section 19: S/2SE

Nearburg Exploration Company, LLC
3300 North "A" Street, Bldg #2, Suite 120
Midland, TX 79705

TOWNSHIP 20 SOUTH, RANGE 36 EAST

Section 20: N/2SW, SESW

Altura Energy, LTD
P.O. Box 4294
Houston, TX 77210-4294

TOWNSHIP 20 SOUTH, RANGE 36 EAST

Section 20: SWSW

Xeric Oil & Gas Corporation
P.O. 352
Midland, TX 79702

ARCO
P.O. Box 1610
Midland, TX 79702

TOWNSHIP 20 SOUTH, RANGE 36 EAST

Section 20: N/2, SE

Falcon Creek Resources, Inc.
621 17th Street, Suite 1800
Denver, CO 80293

FALCON CREEK RESOURCES, INC.

621 17th Street, Suite 1800, Denver, Colorado 80293-0621

(303) 675-0007 (303) 675-0008 Facsimile

September 9, 1998

NSP-1794(L)

OUT - 6 1998

Altura Energy, LTD
P.O. Box 4294
Houston, TX 77210-4294

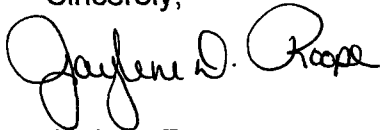
RE: Application for Non-Standard Proration Unit
FCR 20 State #1
660' FNL, 1750' FWL
Section 20, T20S, R36E
Lea County, New Mexico

To Whom It May Concern:

Please find enclosed for your review a copy of our Application for Non-Standard Proration Unit for the captioned well. We request that you execute this letter signifying your waiver to any objection for the spacing of said well.

Please route an executed copy of this letter within 20 days to New Mexico Oil Conservation Division at 2040 Pacheco Street, Santa Fe, New Mexico 87505. Thank you for your cooperation in this matter.

Sincerely,



Jaylene Roope
Sr. Operations Technician

We hereby waive any objection to Falcon Creek Resources, Inc.'s Application for Non-Standard Proration Unit for the FCR 20 State #1 well at the captioned location.

Altura Energy, LTD

By: *Michael Starrett*
Title: Regulatory ENGINEER
Print Name: MICHAEL STARRETT
Date: 9-23-98

FALCON CREEK RESOURCES, INC.

621 17th Street, Suite 1800, Denver, Colorado 80293-0621

(303) 675-0007 (303) 675-0008 Facsimile

September 9, 1998

Eagle K Production Company
P.O. Box 80451
Midland, TX 79708

NSP-1794(L)

007 - 1000

OIL CONSERVATION DIV.

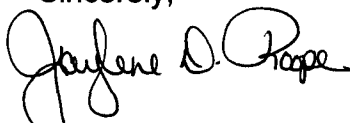
RE: Application for Non-Standard Proration Unit
FCR 20 State #1
660' FNL, 1750' FWL
Section 20, T20S, R36E
Lea County, New Mexico

To Whom It May Concern:

Please find enclosed for your review a copy of our Application for Non-Standard Proration Unit for the captioned well. We request that you execute this letter signifying your waiver to any objection for the spacing of said well.

Please route an executed copy of this letter within 20 days to New Mexico Oil Conservation Division at 2040 Pacheco Street, Santa Fe, New Mexico 87505. Thank you for your cooperation in this matter.

Sincerely,



Jaylene Roope
Sr. Operations Technician

We hereby waive any objection to Falcon Creek Resources, Inc.'s Application for Non-Standard Proration Unit for the FCR 20 State #1 well at the captioned location.

Eagle K Production Company

By: D.G. Rose
Title: Sole Proprietor
Print Name: D.G. Rose
Date: 9-29-98

FALCON CREEK RESOURCES, INC.

621 17th Street, Suite 1800, Denver, Colorado 80293-0621

(303) 675-0007 (303) 675-0008 Facsimile

September 9, 1998

Amerada Hess Corporation
P.O. Box 2040
Houston, TX 77252-2040

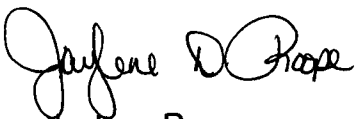
RE: Application for Non-Standard Proration Unit
FCR 20 State #1
660' FNL, 1750' FWL
Section 20, T20S, R36E
Lea County, New Mexico

To Whom It May Concern:

Please find enclosed for your review a copy of our Application for Non-Standard Proration Unit for the captioned well. We request that you execute this letter signifying your waiver to any objection for the spacing of said well.

Please route an executed copy of this letter within 20 days to New Mexico Oil Conservation Division at 2040 Pacheco Street, Santa Fe, New Mexico 87505. Thank you for your cooperation in this matter.

Sincerely,



Jaylene Roope
Sr. Operations Technician

We hereby waive any objection to Falcon Creek Resources, Inc.'s Application for Non-Standard Proration Unit for the FCR 20 State #1 well at the captioned location.

Amerada Hess Corporation

By: 

Title: ATTORNEY-IN-FACT

Print Name: Randy J. Pham

Date: 9/21/98

FALCON CREEK RESOURCES, INC.

621 17th Street, Suite 1800, Denver, Colorado 80293-0621

(303) 675-0007 (303) 675-0008 Facsimile

September 9, 1998

Boyd & McWilliams Energy Group, Inc.
550 West Texas, Suite 704
Midland, TX 79701

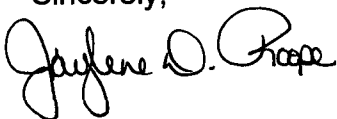
RE: Application for Non-Standard Proration Unit
FCR 20 State #1
660' FNL, 1750' FWL
Section 20, T20S, R36E
Lea County, New Mexico

To Whom It May Concern:

Please find enclosed for your review a copy of our Application for Non-Standard Proration Unit for the captioned well. We request that you execute this letter signifying your waiver to any objection for the spacing of said well.

Please route an executed copy of this letter within 20 days to New Mexico Oil Conservation Division at 2040 Pacheco Street, Santa Fe, New Mexico 87505. Thank you for your cooperation in this matter.

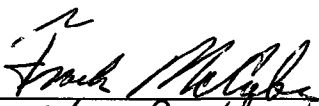
Sincerely,



Jaylene Roope
Sr. Operations Technician

We hereby waive any objection to Falcon Creek Resources, Inc.'s Application for Non-Standard Proration Unit for the FCR 20 State #1 well at the captioned location.

Boyd & McWilliams Energy Group, Inc.

By: 
Title: Vice President
Print Name: Frank McCabe
Date: 9-16-98

CMD :
OG6C101

ONGARD
C101-APPLICATION FOR PERMIT TO DRILL

10/06/98 13:56:43
OGOIV -EMFA

OGRID Idn : 169415 API Well No: 30 25 34474 APD Status(A/C/P): A
Opr Name, Addr: FALCON CREEK RESOURCES, INC. Aprvl/Cncl Date : 07-29-1998
621 17TH STREET, SUITE 1800
DENVER, CO 80293

Prop Idn: 23544 FCR 20 STATE

Well No: 1

	U/L	Sec	Township	Range	Lot Idn	North/South	East/West
	---	---	-----	-----	-----	-----	-----
Surface Locn :	C	20	20S	36E		FTG 660 F N	FTG 1750 F W
OCD U/L :	C		API County :	25			

Work typ(N/E/D/P/A) : N Well typ(O/G/M/I/S/W/C): O Cable/Rotary (C/R) : R
Lease typ(F/S/P/N/J/U/I): S Ground Level Elevation : 3629

State Lease No: Multiple Comp (Y/N) : S
Prpsd Depth : 4000 Prpsd Frmtn : SEVEN RIVERS

E7024: Only view is allowed

PF01 HELP	PF02	PF03 EXIT	PF04 GoTo	PF05	PF06 CONFIRM
PF07	PF08	PF09 PRINT	PF10 C102	PF11 HISTORY	PF12

CMD : ONGARD 10/06/98 13:56:33
OG6CLOG C105-WELL COMPLETION OR RECOMP CASING LOG OGOIV -EMFA

OGRID Identifier : 169415 FALCON CREEK RESOURCES, INC.
Prop Identifier : 23544 FCR 20 STATE
API Well Identifier : 30 25 34474 Well No : 001
Surface Locn - UL : C Sec : 20 Twp : 20S Range : 36E Lot Idn :
Multiple comp (S/M/C): S TVD Depth (Feet) : MVD Depth (Feet):
Spud Date : P/A Date :
Casing/Linear Record:

S Size Grade Weight Depth(ft) Depth(ft) Hole Size Cement ---- TOC ----
(inches) (lb/ft) Top-Liner Bot-Liner (inches) (Sacks) (feet) Code

E0042: Record not found; Authority denied to ADD/MODIFY

PF01 HELP PF02 PF03 EXIT PF04 GoTo PF05 PF06 CONFIRM
PF07 PF08 PF09 COMMENT PF10 TLOG PF11 PF12