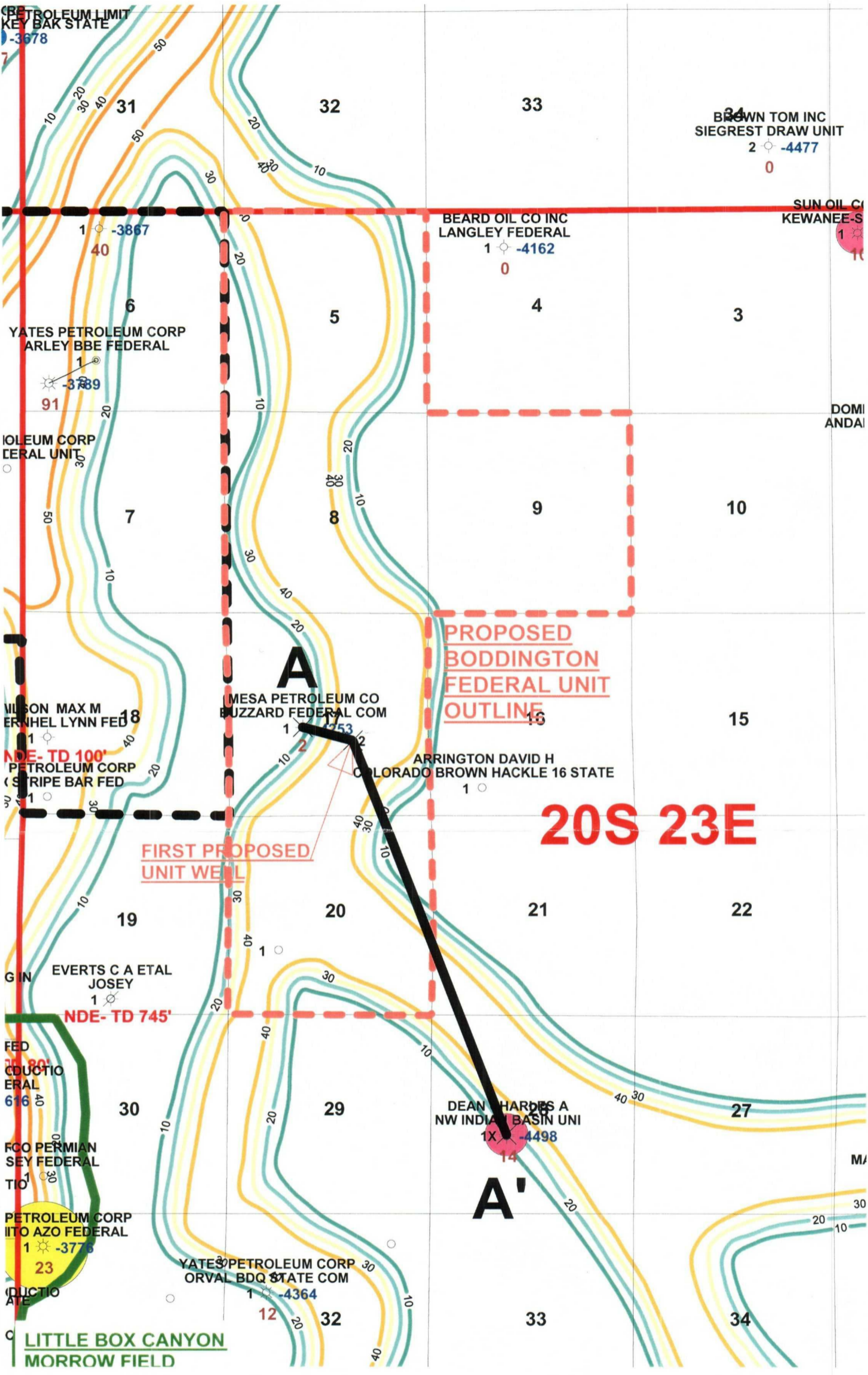
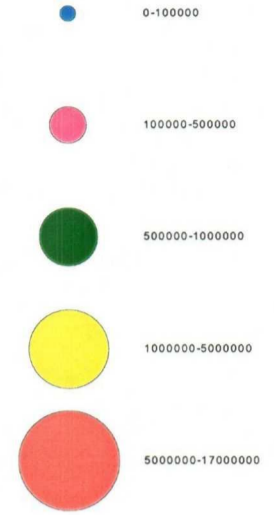


JFH MORROW GAS CUM BUBBLE <BOX CANYON>
 Straight hole well
 Cum Gas Volume MRRW, Production



BEFORE THE OIL CONSERVATION DIVISION
 Santa Fe, New Mexico
 Case No. 13298 Exhibit No. 6
 Submitted by:
YATES PETROLEUM CORPORATION
 Hearing Date: July 8, 2004

Yates Petroleum Corporation		
Proposed Boddington Federal Unit Eddy County, New Mexico Net Sand Isopach Lower Morrow Interval GR <= 50 api CI = 10 ft		
Author: John Humphrey	Scale: 1"=3000'	Date: 14 June, 2004