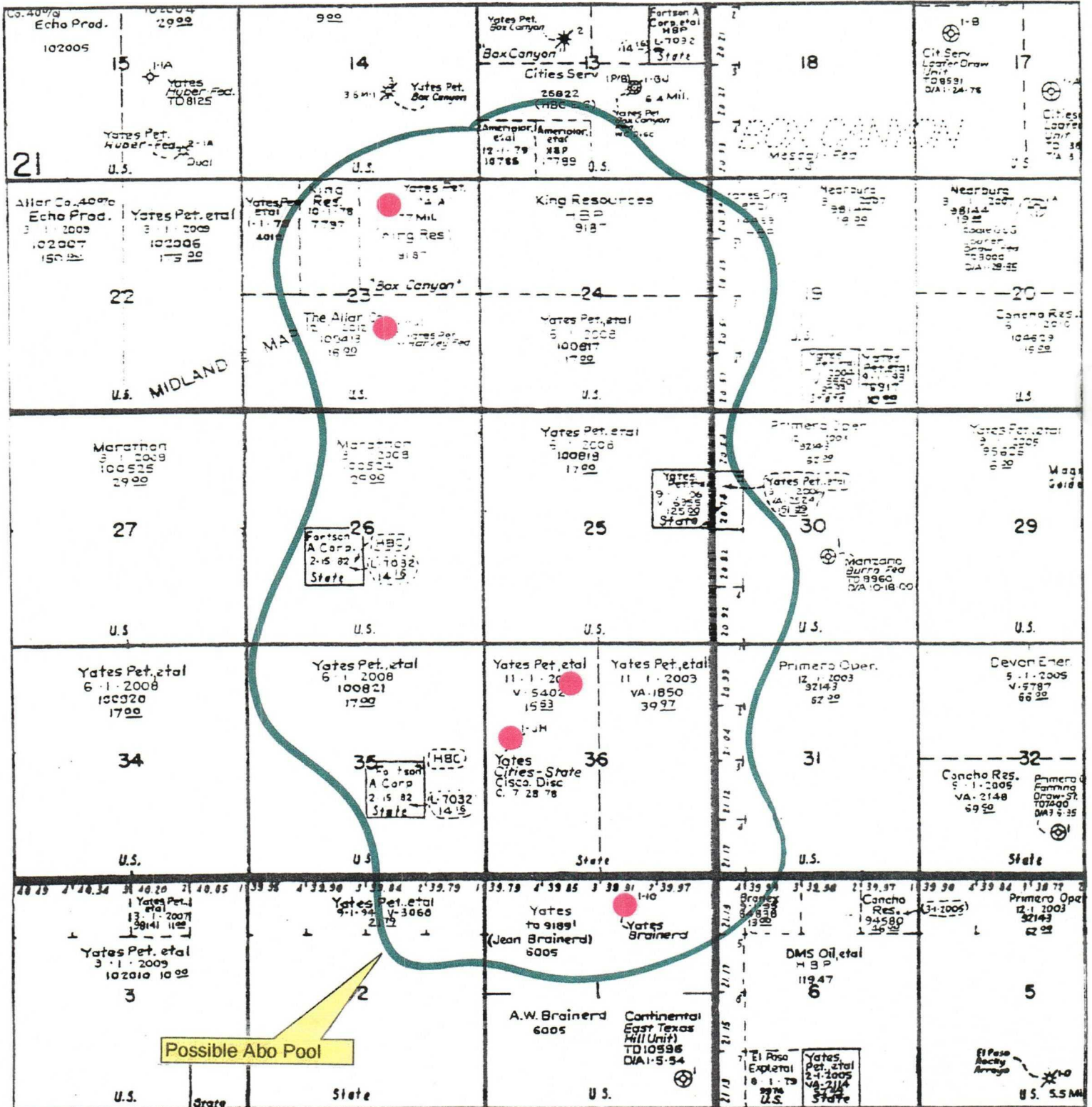


**Yates Petroleum Corporation
 Duvel "BCD" State Com #1
 Section 36-21S-21E
 Eddy County, New Mexico**



● Wells with Abo gas shows

BEFORE THE OIL CONSERVATION DIVISION
 Santa Fe, New Mexico
 Case No. 13222 Exhibit No. 7
 Submitted by:
YATES PETROLEUM CORPORATION
 Hearing Date: March 4, 2004