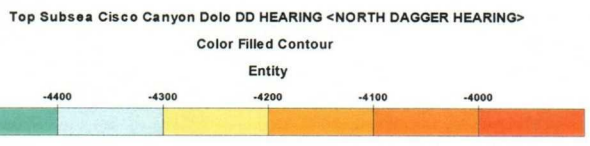
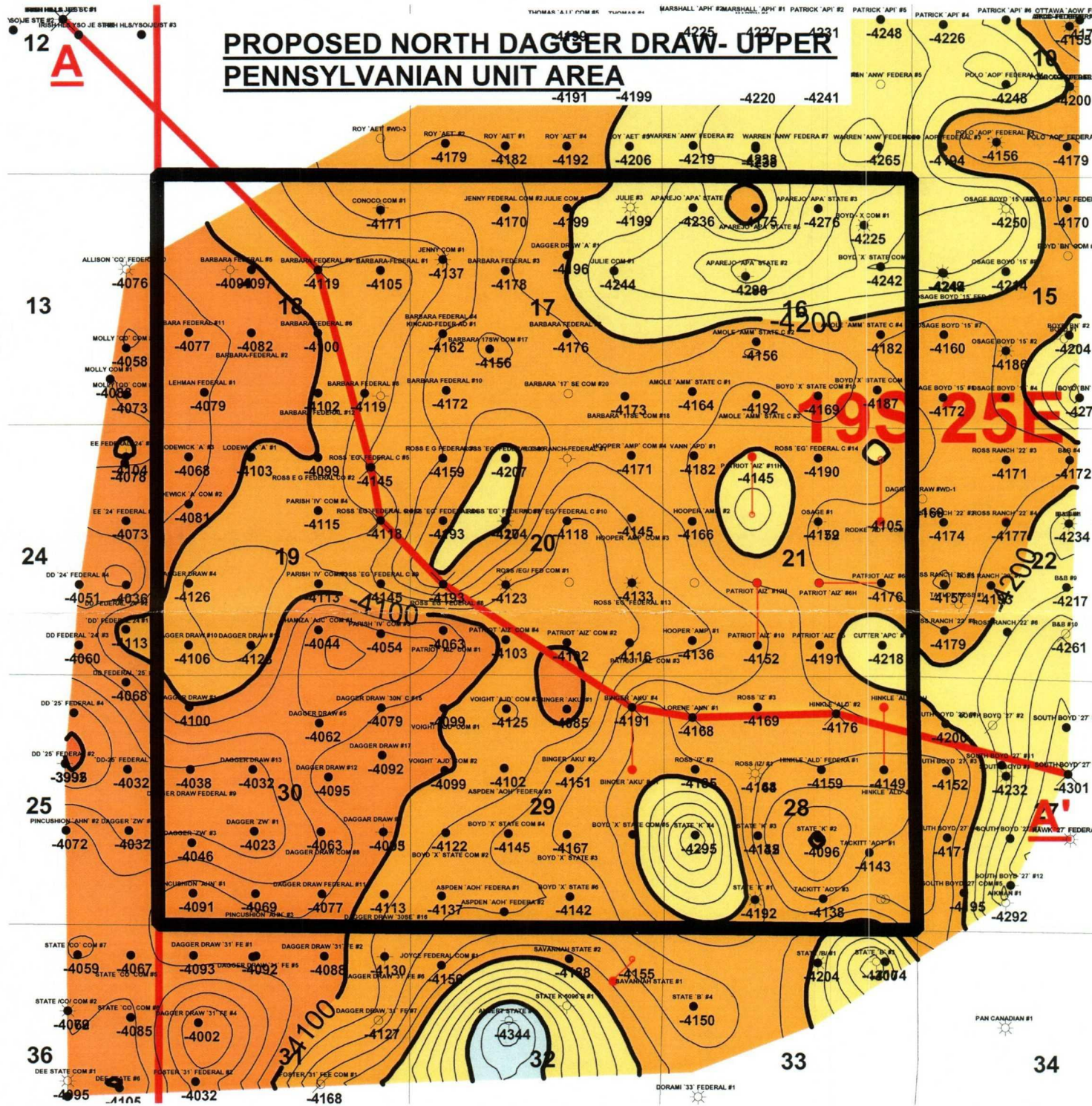




PROPOSED NORTH DAGGER DRAW- UPPER PENNSYLVANIAN UNIT AREA



Yates Petroleum Corporation	
North Dagger Draw Upper Pennsylvanian Unit Area Structure Top of Upper Penn Dolomite C1=20' Eddy County New Mexico	
Author: John F. Humphrey	Date: 26 February, 2004
Scale: 1"=3000'	

BEFORE THE OIL CONSERVATION DIVISION
Santa Fe, New Mexico
Case Nos. 13227/13228 Exhibit No. 14
Submitted by:
Yates Petroleum Corporation
Hearing Date: March 4, 2004