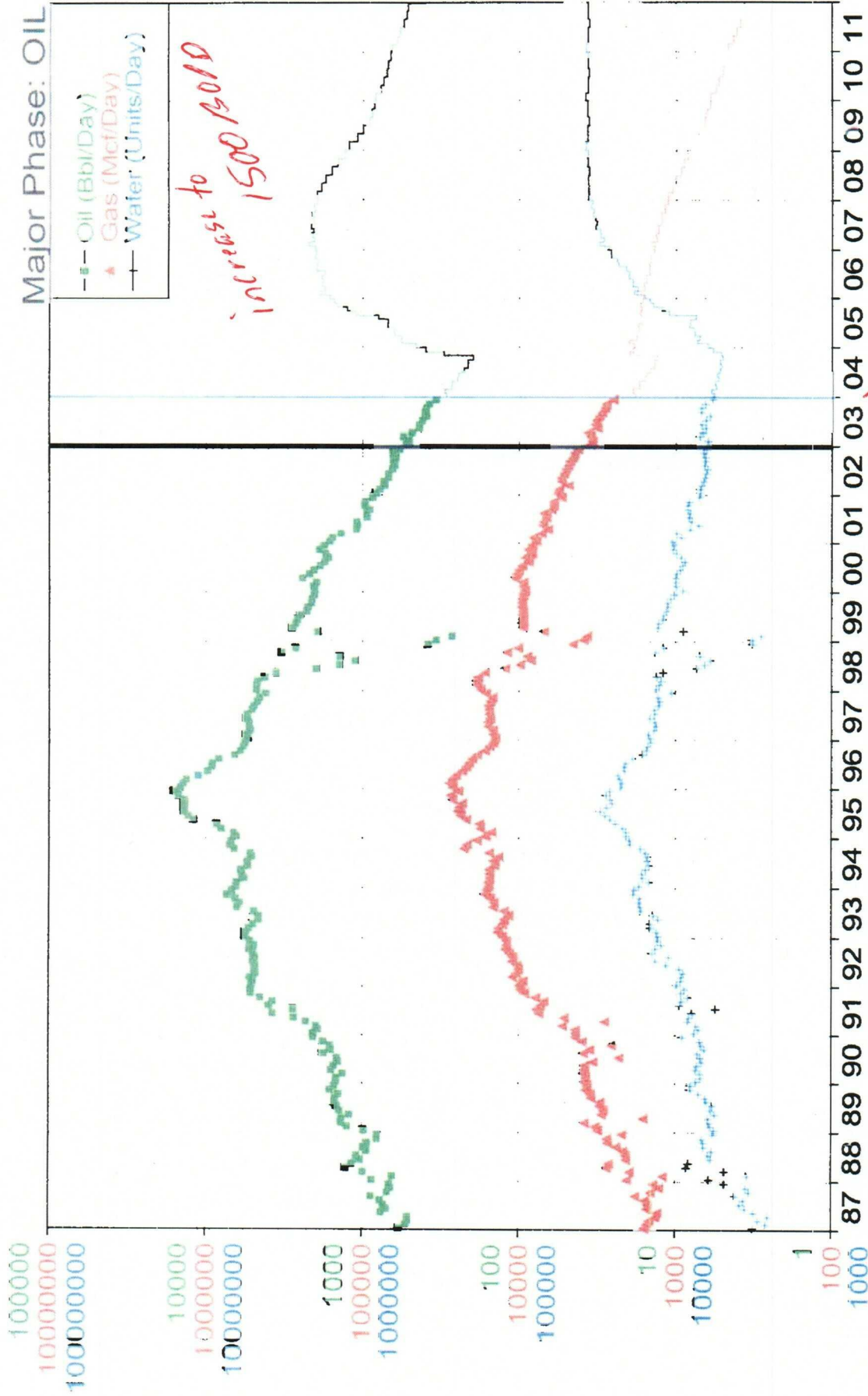


NORTH DAGGER DRAW UPPER PENNSYLVANIAN UNIT
 EDDY COUNTY, NEW MEXICO
 HISTORICAL PRODUCTION CURVE
 AND PRODUCTION FORECAST



BEFORE THE OIL CONSERVATION DIVISION
 Santa Fe, New Mexico
 Case Nos. 13227/13228 Exhibit No. 19
 Submitted by:
 Yates Petroleum Corporation
 Hearing Date: March 4, 2004