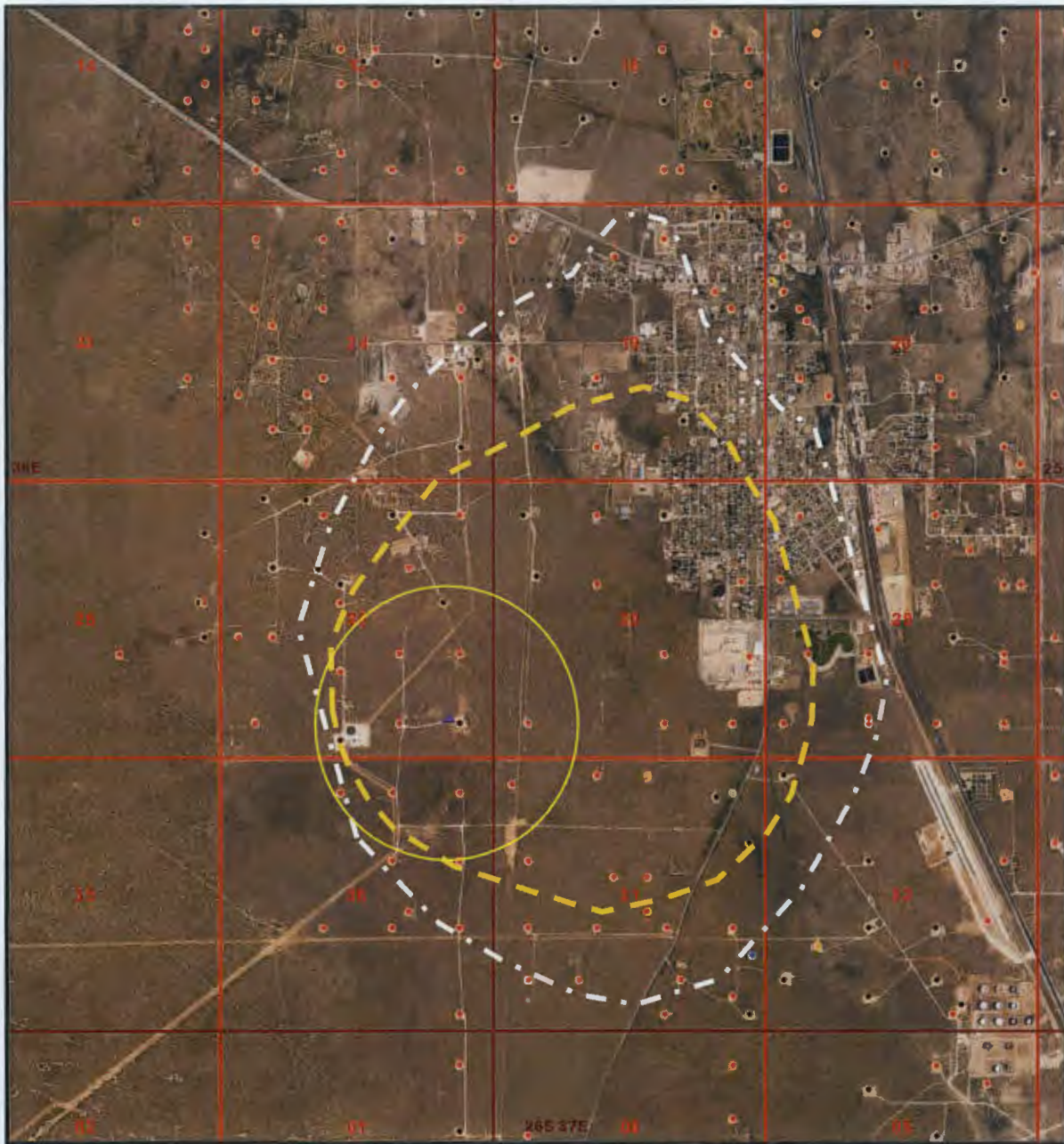




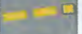



Oil Conservation Division
Energy, Minerals and Natural Resources Department
State of New Mexico

CASE NO. 15723 Division Exhibit No. 13:
Aerial Photograph Map Showing Area of Review Wells and
Simulated TDS Concentrations for Model Layer 2 at 20 Years



EXPLANATION

-  Proposed injection well
-  One-half mile radius for Area of Review (AOR) wells
-  Approximate limit of simulated TDS concentration greater than 70 grams per liter for model layer 2 at 20 years
-  Approximate limit of simulated TDS concentration greater than 30 grams per liter for model layer 2 at 20 years

Source: NMOCD ArcGIS Database