



February 27, 2018

Bureau of Land Management

6251 College Blvd, Ste A
Farmington, NM 87402
Attn: Mr. Joe Hewitt

State of New Mexico Land Office

310 Old Santa Fe Trail
Santa Fe, NM 87504
Attention: Marilyn Gruebel

State of New Mexico Oil Conservation Division

1220 South St. Francis Drive
Santa Fe, NM 87505
Attention: Heather Riley

Re: Plan of Development 2018
Crow Canyon Unit
San Juan County, New Mexico

Ladies and Gentlemen:

Encana Oil & Gas (USA) Inc. ("Encana") respectfully submits for your approval the 2018 Plan of Development and Review of Operations for the Crow Canyon Unit – NMNM 135203X – located in San Juan County, New Mexico.

The Crow Canyon Unit was approved on June 28, 2016 to be made effective August 1, 2013. In accordance with the terms Article 9, Encana drilled and completed the Crow Canyon Unit 701H well (f/k/a Escrito D30-2408 01H) as the initial unit obligation well which is described below.

The Crow Canyon Unit Mancos Participating Area NMNM 135203A was approved August 25, 2016, which encompassed the entire Crow Canyon Unit area of 13,604.06 acres, but applied tract participation to only 12,565.23 committed acres.

This 2018 Plan of Development contains a review of the operations conducted in the Crow Canyon Unit since the August 1, 2013 inception of the unit.

REVIEW OF OPERATIONS (includes all operations conducted since unit inception)

Existing Wells Drilled & Completed

Well Name	Location	Spud Date	Completion Date	Work Performed
Crow Canyon Unit 701H	30-24N-08W	08/02/2013	10/04/2013	Completed to Mancos Formation

Other Operations

Workover Operations

Well Name	Work Completed	Date Completed
Crow Canyon Unit 701H	Pipeline installation	2013
Crow Canyon Unit 701H	Facilities installation	2013
Crow Canyon Unit 701H	Combuster	2014
Crow Canyon Unit 701H	VRU replacement	2014
Crow Canyon Unit 701H	Compressor	2015

Tank Isolation Project – the installation of isolation and de-pressure valves on the tank vapor header system for each storage tank to allow for the safe maintenance of storage tanks.

Well Name	Location	Year Completed
Crow Canyon Unit 701H	30-24N-08W	2017

2018 PLAN OF DEVELOPMENT

2018 Drilling Operations

None

2018 Other Operations

None

Unit Materials Enclosed

Enclosed herewith are the following materials reflecting current unit and well status.

1. Current North Alamito Unit Existing Well List
 - Production History – Table (by well)
 - Production Curve – Graph (by well)
2. Grid with Well Locations
3. Current Infrastructure Map

*Note: Unit Agreement Exhibits A & B are available, but have not been included as enclosures herewith because there have been no changes since the last versions were submitted to your offices.

Any additions or modifications to this Plan of Development will be submitted on a Supplemental Plan of Development. If you have any questions regarding this Plan of Development please feel free to contact Mona Binion at mona.binion@encana.com or 720-876-5325.

Sincerely,



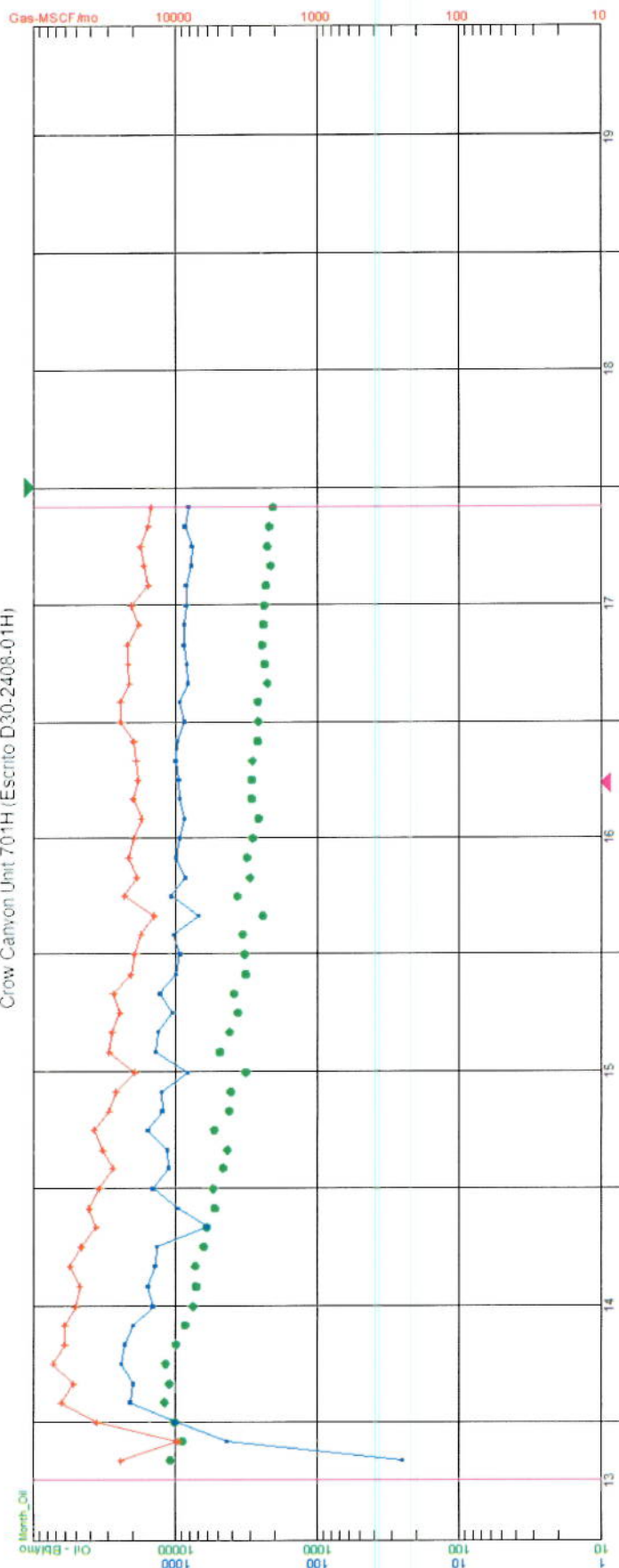
Megan E. Gross
Land Technician

Enclosures:

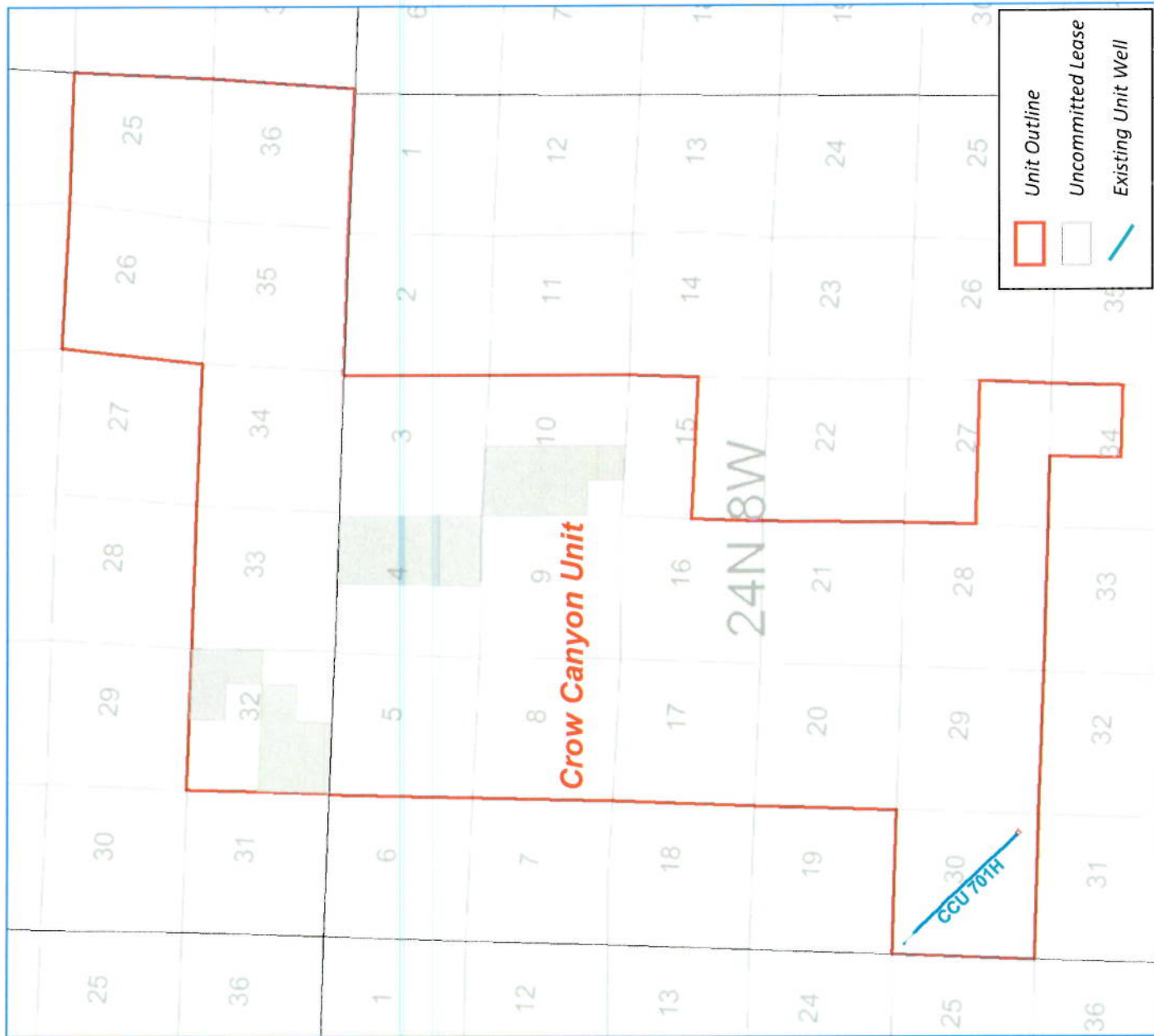
Cc: Federal Indian Minerals Office
Working Interest Owners – Nageezi Unit

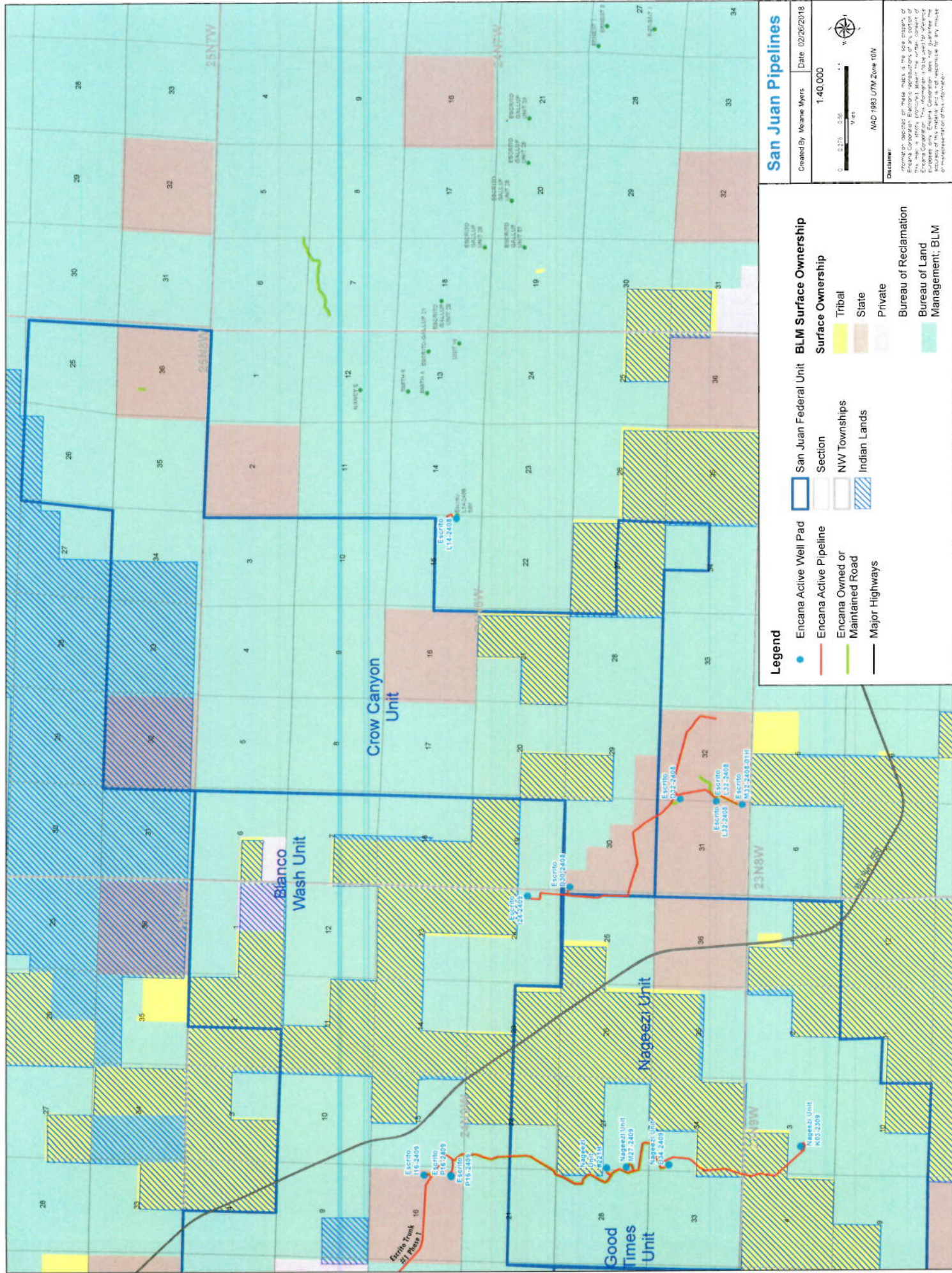
Wells	Spec. Township	Range	County	State	API	Spud Date	First Sales	Status	2013			2014			2015			2016			2017			10/2013 to 11/2017		
									Oil (bbl)	Gas (mcf)	Water (bbl)	Oil (bbl)	Gas (mcf)	Water (bbl)	Oil (bbl)	Gas (mcf)	Water (bbl)	Oil (bbl)	Gas (mcf)	Water (bbl)	Oil (bbl)	Gas (mcf)	Water (bbl)	Total Oil by well (bbl)	Total Gas by well (mcf)	Total Water by well (bbl)
CROW CANYON 2314 (0.90-2.00-41.0)	30. 24N. 8W.	34. 24N. 8W.	San Juan	NM	2004535407000	08/02/2013	02/02/2014	IP	90,075	49,217	1,468	98,750	611,674	29,551	49,064	318,934	14,186	35,247	210,093	11,263	25,572	706,182	9,282	238,667	1,418,840	55,795

Crow Canyon Unit 701H (Escrito D30-2408-01H)



Wells	Sect. Township Range	County State	API	Spud Date	First Sales	Status	2013			2014			2015			2016			2017			10/2013 to 11/2017		
							OIL (bbl)	GAS (mcf)	WATER (bbl)	OIL (bbl)	GAS (mcf)	WATER (bbl)	OIL (bbl)	GAS (mcf)	WATER (bbl)	OIL (bbl)	GAS (mcf)	WATER (bbl)	OIL (bbl)	GAS (mcf)	WATER (bbl)	Total OIL by well (bbl)	Total GAS by well (mcf)	Total WATER by well (bbl)
CROW CANYON 701H (D30-2408-01H)	30, 24N, 8W	San Juan NM	3006534670000	08/02/2013	10/30/2013	PR	30,035	69,237	1,469	98,750	613,474	19,551	49,064	318,954	14,186	35,247	230,993	11,263	25,572	206,182	9,287	238,667	1,438,840	55,756





San Juan Pipelines

Created By: Melanie Myers

Date: 02/26/2018

1:40,000

0 0.125 0.25 0.5 1 1.25 1.5 1.75 2 2.25 2.5 2.75 3 3.25 3.5 3.75 4 4.25 4.5 4.75 5 5.25 5.5 5.75 6 6.25 6.5 6.75 7 7.25 7.5 7.75 8 8.25 8.5 8.75 9 9.25 9.5 9.75 10 10.25 10.5 10.75 11 11.25 11.5 11.75 12 12.25 12.5 12.75 13 13.25 13.5 13.75 14 14.25 14.5 14.75 15 15.25 15.5 15.75 16 16.25 16.5 16.75 17 17.25 17.5 17.75 18 18.25 18.5 18.75 19 19.25 19.5 19.75 20 20.25 20.5 20.75 21 21.25 21.5 21.75 22 22.25 22.5 22.75 23 23.25 23.5 23.75 24 24.25 24.5 24.75 25 25.25 25.5 25.75 26 26.25 26.5 26.75 27 27.25 27.5 27.75 28 28.25 28.5 28.75 29 29.25 29.5 29.75 30 30.25 30.5 30.75 31 31.25 31.5 31.75 32 32.25 32.5 32.75 33 33.25 33.5 33.75 34 34.25 34.5 34.75 35 35.25 35.5 35.75 36 36.25 36.5 36.75 37 37.25 37.5 37.75 38 38.25 38.5 38.75 39 39.25 39.5 39.75 40 40.25 40.5 40.75 41 41.25 41.5 41.75 42 42.25 42.5 42.75 43 43.25 43.5 43.75 44 44.25 44.5 44.75 45 45.25 45.5 45.75 46 46.25 46.5 46.75 47 47.25 47.5 47.75 48 48.25 48.5 48.75 49 49.25 49.5 49.75 50 50.25 50.5 50.75 51 51.25 51.5 51.75 52 52.25 52.5 52.75 53 53.25 53.5 53.75 54 54.25 54.5 54.75 55 55.25 55.5 55.75 56 56.25 56.5 56.75 57 57.25 57.5 57.75 58 58.25 58.5 58.75 59 59.25 59.5 59.75 60 60.25 60.5 60.75 61 61.25 61.5 61.75 62 62.25 62.5 62.75 63 63.25 63.5 63.75 64 64.25 64.5 64.75 65 65.25 65.5 65.75 66 66.25 66.5 66.75 67 67.25 67.5 67.75 68 68.25 68.5 68.75 69 69.25 69.5 69.75 70 70.25 70.5 70.75 71 71.25 71.5 71.75 72 72.25 72.5 72.75 73 73.25 73.5 73.75 74 74.25 74.5 74.75 75 75.25 75.5 75.75 76 76.25 76.5 76.75 77 77.25 77.5 77.75 78 78.25 78.5 78.75 79 79.25 79.5 79.75 80 80.25 80.5 80.75 81 81.25 81.5 81.75 82 82.25 82.5 82.75 83 83.25 83.5 83.75 84 84.25 84.5 84.75 85 85.25 85.5 85.75 86 86.25 86.5 86.75 87 87.25 87.5 87.75 88 88.25 88.5 88.75 89 89.25 89.5 89.75 90 90.25 90.5 90.75 91 91.25 91.5 91.75 92 92.25 92.5 92.75 93 93.25 93.5 93.75 94 94.25 94.5 94.75 95 95.25 95.5 95.75 96 96.25 96.5 96.75 97 97.25 97.5 97.75 98 98.25 98.5 98.75 99 99.25 99.5 99.75 100 100.25 100.5 100.75 101 101.25 101.5 101.75 102 102.25 102.5 102.75 103 103.25 103.5 103.75 104 104.25 104.5 104.75 105 105.25 105.5 105.75 106 106.25 106.5 106.75 107 107.25 107.5 107.75 108 108.25 108.5 108.75 109 109.25 109.5 109.75 110 110.25 110.5 110.75 111 111.25 111.5 111.75 112 112.25 112.5 112.75 113 113.25 113.5 113.75 114 114.25 114.5 114.75 115 115.25 115.5 115.75 116 116.25 116.5 116.75 117 117.25 117.5 117.75 118 118.25 118.5 118.75 119 119.25 119.5 119.75 120 120.25 120.5 120.75 121 121.25 121.5 121.75 122 122.25 122.5 122.75 123 123.25 123.5 123.75 124 124.25 124.5 124.75 125 125.25 125.5 125.75 126 126.25 126.5 126.75 127 127.25 127.5 127.75 128 128.25 128.5 128.75 129 129.25 129.5 129.75 130 130.25 130.5 130.75 131 131.25 131.5 131.75 132 132.25 132.5 132.75 133 133.25 133.5 133.75 134 134.25 134.5 134.75 135 135.25 135.5 135.75 136 136.25 136.5 136.75 137 137.25 137.5 137.75 138 138.25 138.5 138.75 139 139.25 139.5 139.75 140 140.25 140.5 140.75 141 141.25 141.5 141.75 142 142.25 142.5 142.75 143 143.25 143.5 143.75 144 144.25 144.5 144.75 145 145.25 145.5 145.75 146 146.25 146.5 146.75 147 147.25 147.5 147.75 148 148.25 148.5 148.75 149 149.25 149.5 149.75 150 150.25 150.5 150.75 151 151.25 151.5 151.75 152 152.25 152.5 152.75 153 153.25 153.5 153.75 154 154.25 154.5 154.75 155 155.25 155.5 155.75 156 156.25 156.5 156.75 157 157.25 157.5 157.75 158 158.25 158.5 158.75 159 159.25 159.5 159.75 160 160.25 160.5 160.75 161 161.25 161.5 161.75 162 162.25 162.5 162.75 163 163.25 163.5 163.75 164 164.25 164.5 164.75 165 165.25 165.5 165.75 166 166.25 166.5 166.75 167 167.25 167.5 167.75 168 168.25 168.5 168.75 169 169.25 169.5 169.75 170 170.25 170.5 170.75 171 171.25 171.5 171.75 172 172.25 172.5 172.75 173 173.25 173.5 173.75 174 174.25 174.5 174.75 175 175.25 175.5 175.75 176 176.25 176.5 176.75 177 177.25 177.5 177.75 178 178.25 178.5 178.75 179 179.25 179.5 179.75 180 180.25 180.5 180.75 181 181.25 181.5 181.75 182 182.25 182.5 182.75 183 183.25 183.5 183.75 184 184.25 184.5 184.75 185 185.25 185.5 185.75 186 186.25 186.5 186.75 187 187.25 187.5 187.75 188 188.25 188.5 188.75 189 189.25 189.5 189.75 190 190.25 190.5 190.75 191 191.25 191.5 191.75 192 192.25 192.5 192.75 193 193.25 193.5 193.75 194 194.25 194.5 194.75 195 195.25 195.5 195.75 196 196.25 196.5 196.75 197 197.25 197.5 197.75 198 198.25 198.5 198.75 199 199.25 199.5 199.75 200 200.25 200.5 200.75 201 201.25 201.5 201.75 202 202.25 202.5 202.75 203 203.25 203.5 203.75 204 204.25 204.5 204.75 205 205.25 205.5 205.75 206 206.25 206.5 206.75 207 207.25 207.5 207.75 208 208.25 208.5 208.75 209 209.25 209.5 209.75 210 210.25 210.5 210.75 211 211.25 211.5 211.75 212 212.25 212.5 212.75 213 213.25 213.5 213.75 214 214.25 214.5 214.75 215 215.25 215.5 215.75 216 216.25 216.5 216.75 217 217.25 217.5 217.75 218 218.25 218.5 218.75 219 219.25 219.5 219.75 220 220.25 220.5 220.75 221 221.25 221.5 221.75 222 222.25 222.5 222.75 223 223.25 223.5 223.75 224 224.25 224.5 224.75 225 225.25 225.5 225.75 226 226.25 226.5 226.75 227 227.25 227.5 227.75 228 228.25 228.5 228.75 229 229.25 229.5 229.75 230 230.25 230.5 230.75 231 231.25 231.5 231.75 232 232.25 232.5 232.75 233 233.25 233.5 233.75 234 234.25 234.5 234.75 235 235.25 235.5 235.75 236 236.25 236.5 236.75 237 237.25 237.5 237.75 238 238.25 238.5 238.75 239 239.25 239.5 239.75 240 240.25 240.5 240.75 241 241.25 241.5 241.75 242 242.25 242.5 242.75 243 243.25 243.5 243.75 244 244.25 244.5 244.75 245 245.25 245.5 245.75 246 246.25 246.5 246.75 247 247.25 247.5 247.75 248 248.25 248.5 248.75 249 249.25 249.5 249.75 250 250.25 250.5 250.75 251 251.25 251.5 251.75 252 252.25 252.5 252.75 253 253.25 253.5 253.75 254 254.25 254.5 254.75 255 255.25 255.5 255.75 256 256.25 256.5 256.75 257 257.25 257.5 257.75 258 258.25 258.5 258.75 259 259.25 259.5 259.75 260 260.25 260.5 260.75 261 261.25 261.5 261.75 262 262.25 262.5 262.75 263 263.25 263.5 263.75 264 264.25 264.5 264.75 265 265.25 265.5 265.75 266 266.25 266.5 266.75 267 267.25 267.5 267.75 268 268.25 268.5 268.75 269 269.25 269.5 269.75 270 270.25 270.5 270.75 271 271.25 271.5 271.75 272 272.25 272.5 272.75 273 273.25 273.5 273.75 274 274.25 274.5 274.75 275 275.25 275.5 275.75 276 276.25 276.5 276.75 277 277.25 277.5 277.75 278 278.25 278.5 278.75 279 279.25 279.5 279.75 280 280.25 280.5 280.75 281 281.25 281.5 281.75 282 282.25 282.5 282.75 283 283.25 283.5 283.75 284 284.25 284.5 284.75 285 285.25 285.5 285.75 286 286.25 286.5 286.75 287 287.25 287.5 287.75 288 288.25 288.5 288.75 289 289.25 289.5 289.75 290 290.25 290.5 290.75 291 291.25 291.5 291.75 292 292.25 292.5 292.75 293 293.25 293.5 293.75 294 294.25 294.5 294.75 295 295.25 295.5 295.75 296 296.25 296.5 296.75 297 297.25 297.5 297.75 298 298.25 298.5 298.75 299 299.25 299.5 299.75 300 300.25 300.5 300.75 301 301.25 301.5 301.75 302 302.25 302.5 302.75 303 303.25 303.5 303.75 304 304.25 304.5 304.75 305 305.25 305.5 305.75 306 306.25 306.5 306.75 307 307.25 307.5 307.75 308 308.25 308.5 308.75 309 309.25 309.5 309.75 310 310.25 310.5 310.75 311 311.25 311.5 311.75 312 312.25 312.5 312.75 313 313.25 313.5 313.75 314 314.25 314.5 314.75 315 315.25 315.5 315.75 316 316.25 316.5 316.75 317 317.25 317.5 317.75 318 318.25 318.5 318.75 319 319.25 319.5 319.75 320 320.25 320.5 320.75 321 321.25 321.5 321.75 322 322.25 322.5 322.75 323 323.25 323.5 323.75 324 324.25 324.5 324.75 325 325.25 325.5 325.75 326 326.25 326.5 326.75 327 327.25 327.5 327.75 328 328.25 328.5 328.75 329 329.25 329.5 329.75 330 330.25 330.5 330.75 331 331.25 331.5 331.75 332 332.25 332.5 332.75 333 333.25 333.5 333.75 334 334.25 334.5 334.75 335 335.25 335.5 335.75 336 336.25 336.5 336.75 337 337.25 337.5 337.75 338 338.25 338.5 338.75 339 339.25 339.5 339.75 340 340.25 340.5 340.75 341 341.25 341.5 341.75 342 342.25 342.5 342.75 343 343.25 343.5 343.75 344 344.25 344.5 344.75 345 345.25 345.5 345.75 346 346.25 346.5 346.75 347 347.25 347.5 347.75 348 348.25 348.5 348.75 349 349.25 349.5 349.75 350 350.25 350.5 350.75 351 351.25 351.5 351.75 352 352.25 352.5 352.75 353 353.25 353.5 353.75 354 354.25 354.5 354.75 355 355.25 355.5 355.75 356 356.25 356.5 356.75 357 357.25 357.5 357.75 358 358.25 358.5 358.75 359 359.25 359.5 359.75 360 360.25 360.5 360.75 361 361.25 361.5 361.75 362 362.25 362.5 362.75 363 363.25 363.5 363.75 364 364.25 364.5 364.75 365 365.25 365.5 365.75 366 366.25 366.5 366.75 367 367.25 367.5 367.75 368 368.25 368.5 368.75 369 369.25 369.5 369.75 370 370.25 370.5 370.75 371 371.25 371.5 371.75 372 372.25 372.5 372.75 373 373.25 373.5 373.75 374 374.25 374.5 374.75 375 375.25 375.5 375.75 376 376.25 376.5 376.75 377 377.25 377.5 377.75 378 378.25 378.5 378.75 379 379.25 379.5 379.75 380 380.25 380.5 380.75 381 381.25 381.5 381.75 382 382.25 382.5 382.75 383 383.25 383.5 383.75 384 384.25 384.5 384.75 385 385.25 385.5 385.75 386 386.25 386.5 386.75 387 387.25 387.5 387.75 388 388.25 388.5 388.75 389 389.25 389.5 389.75 390 390.25 390.5 390.75 391 391.25 391.5 391.75 392 392.25 392.5 392.75 393 393.25 393.5 393.75 394 394.25 394.5 394.75 395 395.25 395.5 395.75 396 396.25 396.5 396.75 397 397.25 397.5 397.75 398 398.25 398.5 398.75 399 399.25 399.5 399.75 400 400.25 400.5 400.75 401 401.25 401.5 401.75 402 402.25 402.5 402.75 403 403.25 403.5 403.75 404 404.25 404.5 404.75 405 405.25 405.5 405.75 406 406.25 406.5 406.75 407 407.25 407.5 407.75 408 408.25 408.5 408.75 409 409.25 409.5 409.75 410 410.25 410.5 410.75 411 411.25 411.5 411.75 412 412.25 412.5 412.75 413 413.25 413.5 413.75 414 414.25 414.5 414.75 415 415.25 415.5 415.75 416 416.25 416.5 416.75 417 417.25 417.5 417.75 418 418.25 418.5 418.75 419 419.25 419.5 419.75 420 420.25 420.5 420.75 421 421.25 421.5 421.75 422 422.25 422.5 422.75 423 423.25 423.5 423.75 424 424.25 424.5 424.75 425 425.25 425.5 425.75 426 426.25 426.5 426.75 427 427.25 427.5 427.75 428 428.25 428.5 428.75 429 429.25 429.5 429.75 430 430.25 430.5 430.75 431 431.25 431.5 431.75 432 432.25 432.5 432.75 433 433.25 433.5 433.75 434 434.25 434.5 434.75 435 435.25 435.5 435.75 436 436.25 436.5 436.75 437 437.25 437.5 437.75 438 438.25 438.5 438.75 439 439.25 439.5 439.75 440 440.25 440.5 440.75 441 441.25 441.5 441.75 442 442.25 442.5 442.75 443 443.25 443.5 443.75 444 444.25 444.5 444.75 445 445.25 445.5 445.75 446 446.25 446.5 446.75 447 447.25 447.5 447.75 448 448.25 448.5 448.75 449 449.25 449.5 449.75 450 450.25 450.5 450.75 451 451.25 451.5 451.75 452 452.25 452.5 452.75 453 453.25 453.5 453.75 454 454.25 454.5 454.75 455 455.25 455.5 455.75 456 456.25 456.5 456.75 457 457.25 457.5 457.75 458 458.25 458.5 458.75 459 459.25 459.5 459.75 460 460.25 460.5 460.75 461 461.25 461.5 461.75 462 462.25 462.5 462.75 463 463.25 463.5 463.75 464 464.25 464.5 464.75 465 465.25 465.5 465.75 466 466.25 466.5 466.75 467 467.25 467.5 467.75 468 468.25 468.5 468.75 469 469.25 469.5 469.75 470 470.25 470.5 470.75 471 471.25 471.5 471.75 472 472.25 472.5 472.75 473 473.25 473.5 473.75 474