



February 27, 2018

Bureau of Land Management
6251 College Blvd, Ste A
Farmington, NM 87402
Attn: Mr. Joe Hewitt

State of New Mexico Land Office
310 Old Santa Fe Trail
Santa Fe, NM 87504
Attention: Marilyn Gruebel

State of New Mexico Oil Conservation Division
1220 South St. Francis Drive
Santa Fe, NM 87505
Attention: Heather Riley

Re: Plan of Development 2018
Corrales Canyon Unit
Sandoval County, New Mexico

Ladies and Gentlemen:

Encana Oil & Gas (USA) Inc. ("Encana") respectfully submits for your approval the 2018 Plan of Development and Review of Operations for the Corrales Canyon Unit – NMNM 135852X – located in Sandoval County, New Mexico.

The Corrales Canyon Unit was approved on December 19, 2016 to be made effective April 1, 2014. In accordance with the terms Article 9, Encana drilled and completed the Corrales Canyon Unit 101H well (f/k/a Lybrook P24-2206 01H) as the initial unit obligation well which is described below.

The Corrales Canyon Unit Mancos Participating Area NMNM 135852A was approved January 26, 2017, which encompassed the entire Corrales Canyon Unit area of 2,560.00 acres.

This 2018 Plan of Development contains a review of the operations conducted in the Corrales Canyon Unit since the April 1, 2014 inception of the unit.

REVIEW OF OPERATIONS (includes all operations conducted since unit inception)

Existing Wells Drilled & Completed

Well Name	Location	Spud Date	Completion Date	Work Performed
Corrales Canyon Unit 101H	24-22N-06W	04/09/2014	05/08/2014	Completed to Mancos Formation

Other Operations

Workover Operations

Well Name	Work Completed	Date Completed
Corrales Canyon Unit 101H	Facilities installation	2015
Corrales Canyon Unit 101H	Compressor	2015

Tank Isolation Project – the installation of isolation and de-pressure valves on the tank vapor header system for each storage tank to allow for the safe maintenance of storage tanks.

Well Name	Location	Year Completed
Corrales Canyon Unit 101H	24-22N-06W	2015

2018 PLAN OF DEVELOPMENT

2018 Drilling Operations

None

2018 Other Operations

None

Unit Materials Enclosed

Enclosed herewith are the following materials reflecting current unit and well status.

1. Current North Alamito Unit Existing Well List
 - Production History – Table (by well)
 - Production Curve – Graph (by well)
2. Grid with Well Locations
3. Current Infrastructure Map

*Note: Unit Agreement Exhibits A & B are available, but have not been included as enclosures herewith because there have been no changes since the last versions were submitted to your offices.

Any additions or modifications to this Plan of Development will be submitted on a Supplemental Plan of Development. If you have any questions regarding this Plan of Development please feel free to contact Mona Binion at mona.binion@encana.com or 720-876-5325.

Sincerely,



Megan E. Gross
Land Technician

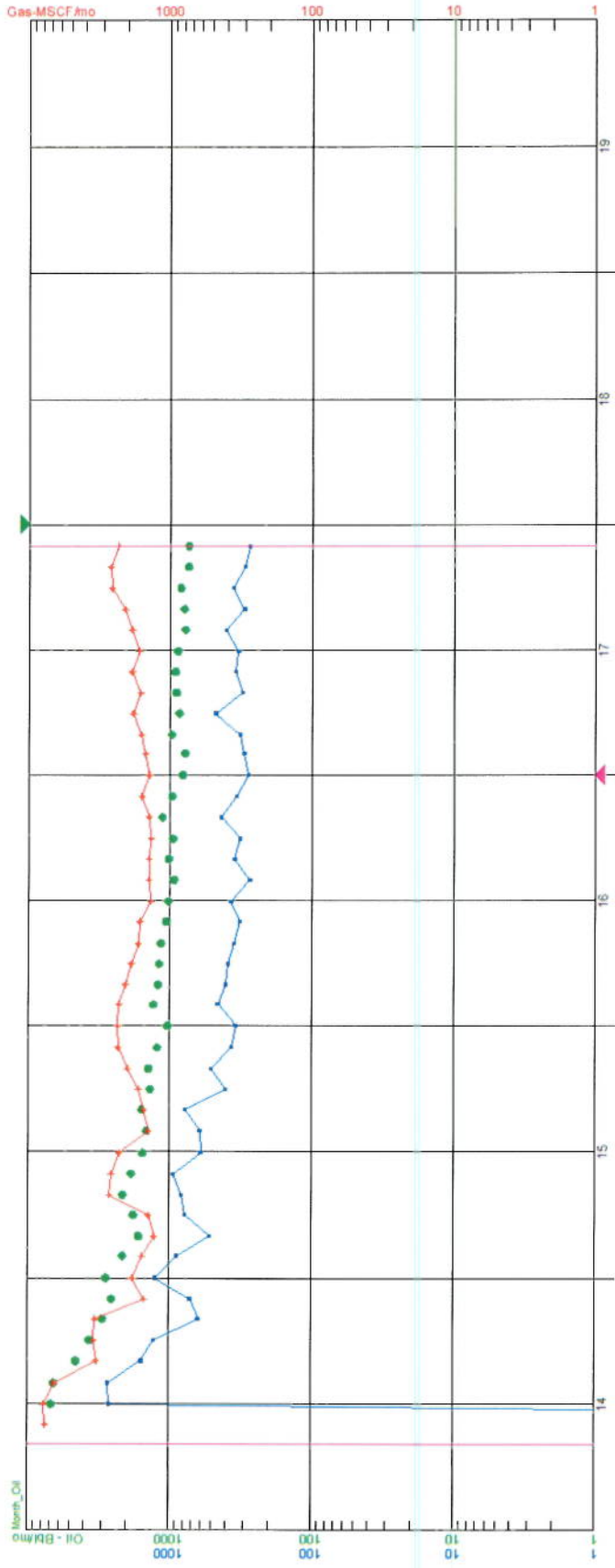
Enclosures:

Cc: Working Interest Owners – Nageezi Unit

Corralles Canyon Unit
Production Table

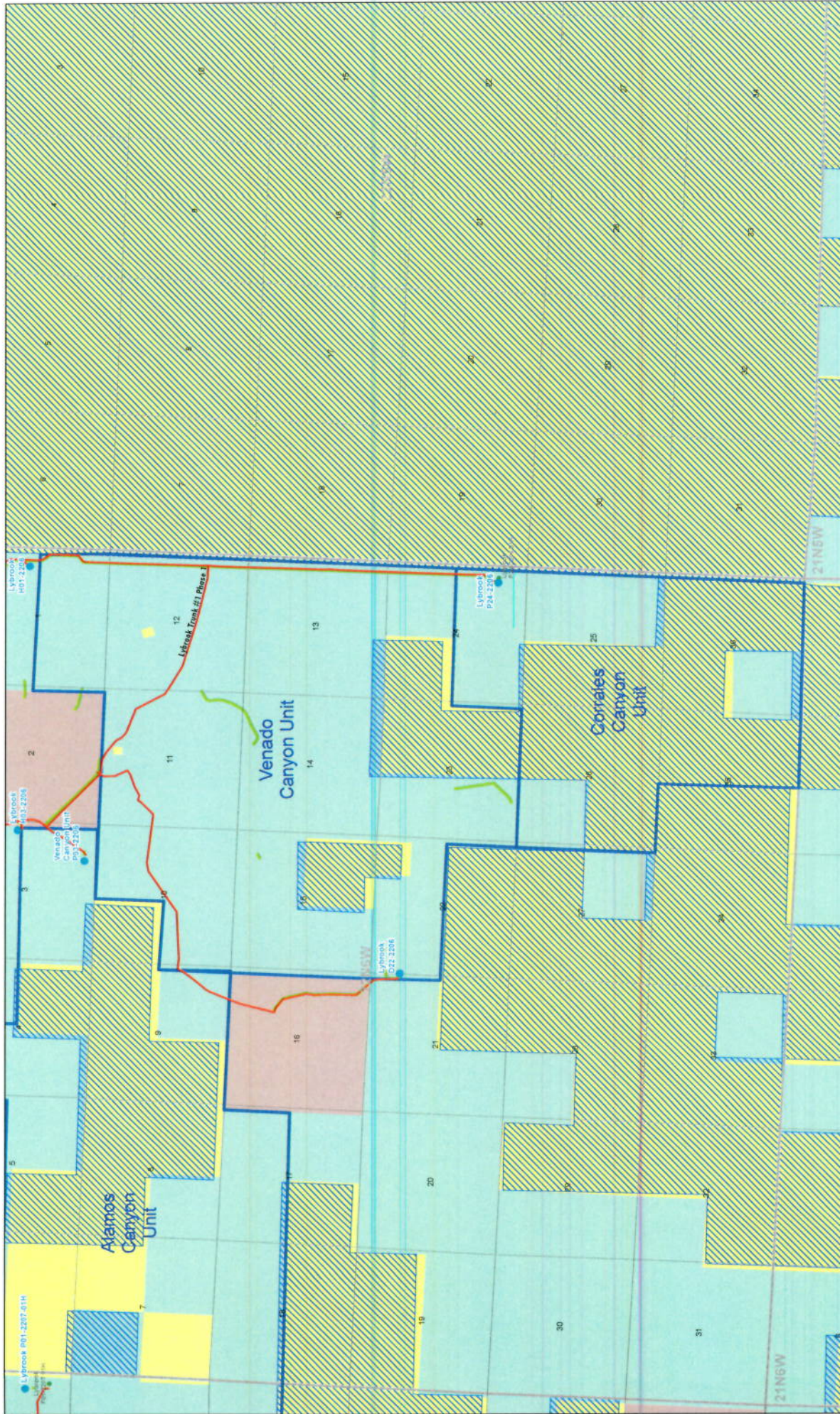
Wells	Sect. Township Range	County	State	API	Spud Date	First Sales	Status	2014			2015			2016			2017			5/2014 to 11/2017		
								OIL (bbl)	GAS (mcf)	WATER (bbl)	OIL (bbl)	GAS (mcf)	WATER (bbl)	OIL (bbl)	GAS (mcf)	WATER (bbl)	OIL (bbl)	GAS (mcf)	WATER (bbl)	Total Oil by well (bbl)	Total GAS by well (mcf)	Total WATER by well (bbl)
CORRALLES CANYON 103H (P24-2206-01H)	24, 6W, 22N	Sandoval	NM	3004311140100	04/09/2014	06/03/2014	IPR	29,846	34,781	10,625	19,225	22,785	7,586	12,793	19,300	4,314	9,266	21,435	3,736	71,169	98,302	26,461

Corrales Canyon 101H (Lybrook P24-2206-01H)



Wells	Sect. Twnshp. Rnge	County	State	API	Spud Date	First Sales	Status	2014			2015			2016			2017			5/2014 to 11/2017		
								OIL (bbl)	GAS (mcf)	WATER (bbl)	OIL (bbl)	GAS (mcf)	WATER (bbl)	OIL (bbl)	GAS (mcf)	WATER (bbl)	OIL (bbl)	GAS (mcf)	WATER (bbl)	Total Oil by well (bbl)	Total GAS by well (mcf)	Total WATER by well (bbl)
CORRALES CANYON 101H (P24-2206-01H)	24, 6W, 22N	Sandoval	NM	30043711240100	04/09/2014	06/03/2014	PR	29,886	34,781	10,825	19,225	22,785	7,586	12,793	19,300	4,314	9,266	21,495	3,736	71,169	98,102	26,461





San Juan Pipelines

Created By: Melaine Myers Date: 02/26/2018

1:30,000

0 0.2 0.4 0.8 Miles

NAD 1983 UTM Zone 10N

Disclaimer:
Information depicted on these maps is the sole property of Encana Corporation. Encana Corporation and its subsidiaries, including Encana Pipelines, are not responsible for any errors or omissions in this information. This information is not to be used for any purpose other than the specific purpose for which it was provided. Encana Corporation and its subsidiaries, including Encana Pipelines, are not responsible for any errors or omissions in this information.

Legend

- Encana Active Well Pad
- Encana Active Pipeline
- Encana Owned or Maintained Road
- Major Highways
- San Juan Federal Unit
- Section
- NW Townships
- Indian Lands
- BLM Surface Ownership
- Surface Ownership
 - Tribal
 - State
 - Private
- Bureau of Reclamation
- Bureau of Land Management, BLM