



---

## **Exhibit 12**

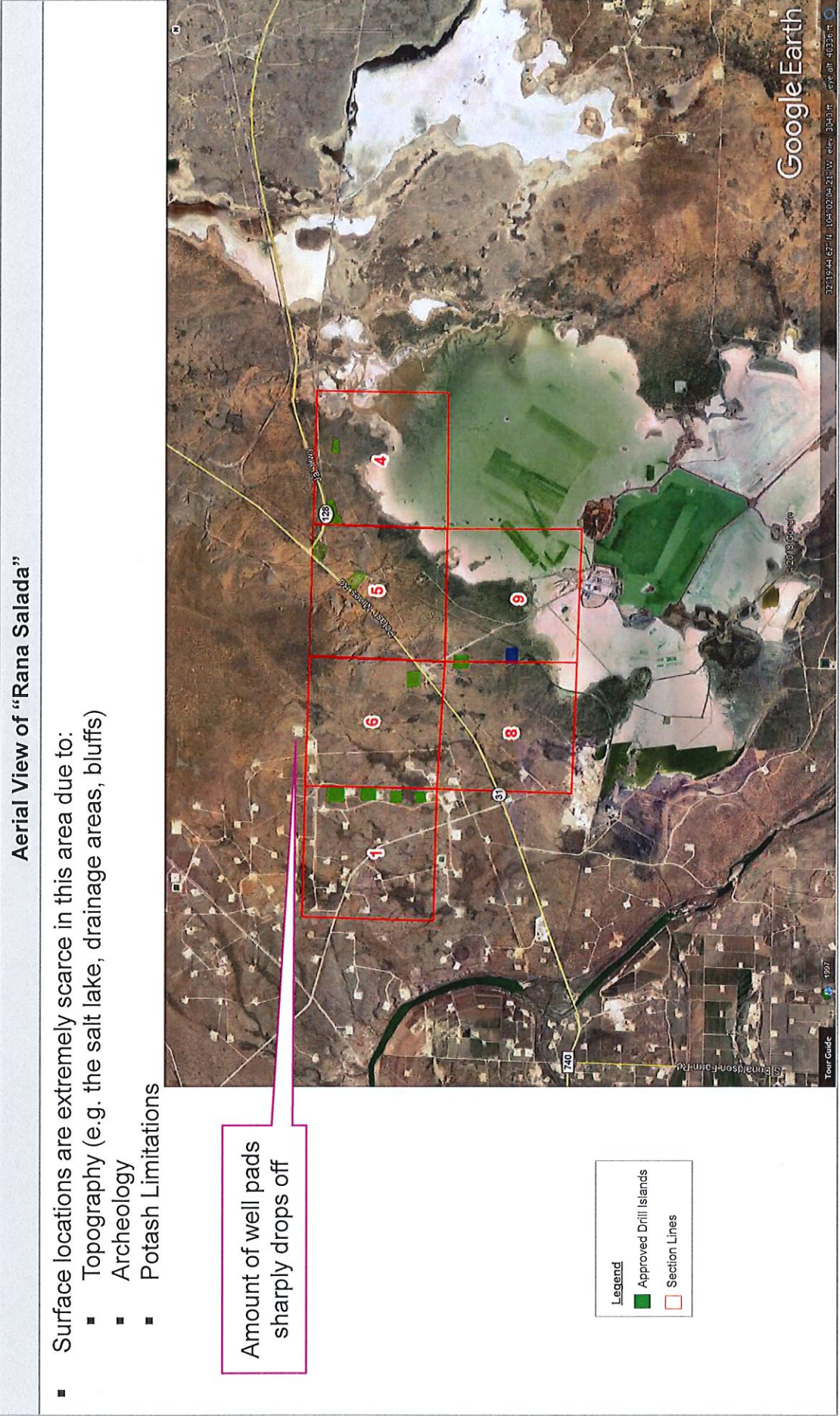
---

### **“Rana Salada” Field Development Plan**

# Exhibit: 12

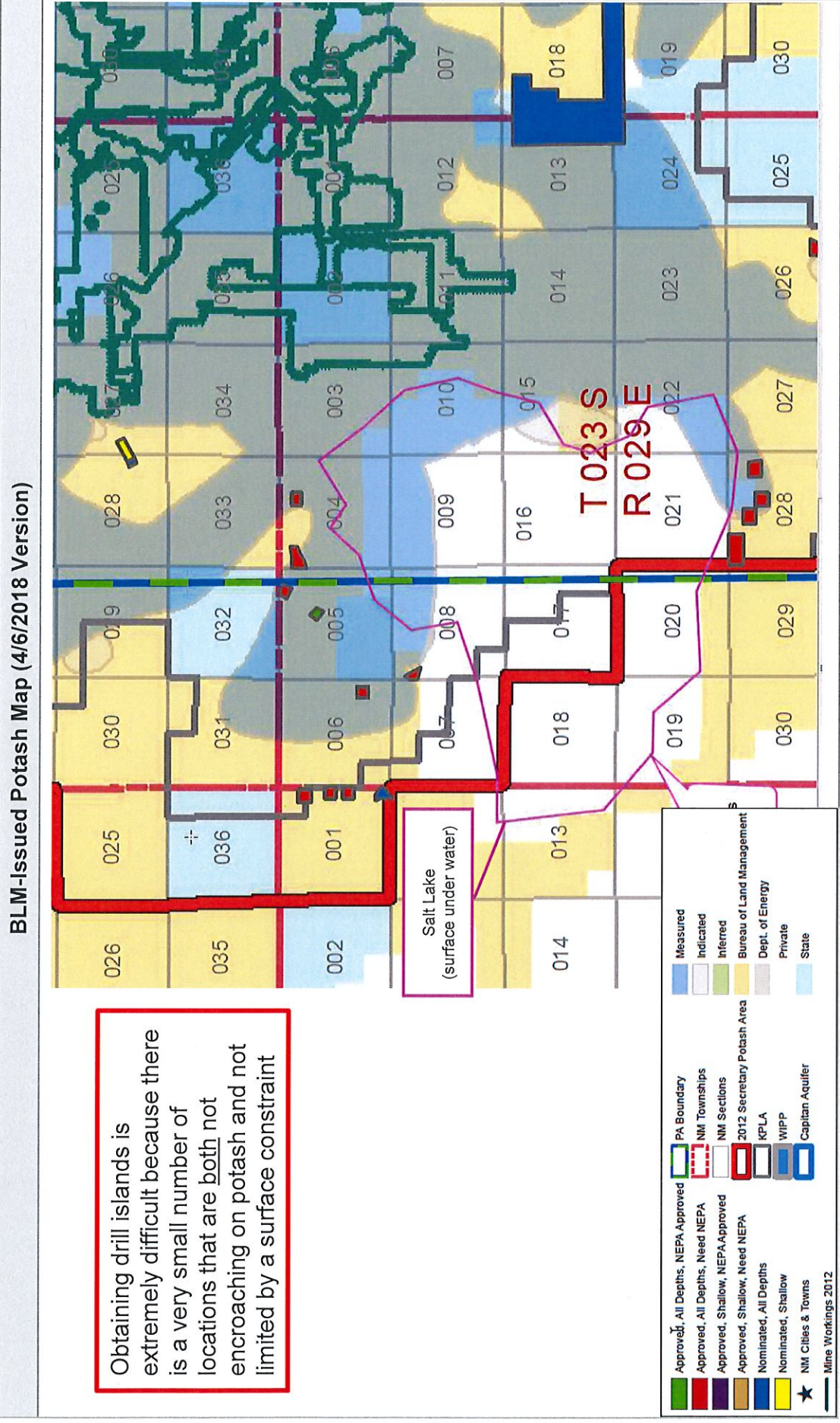


## Surface & Archeological Constraints





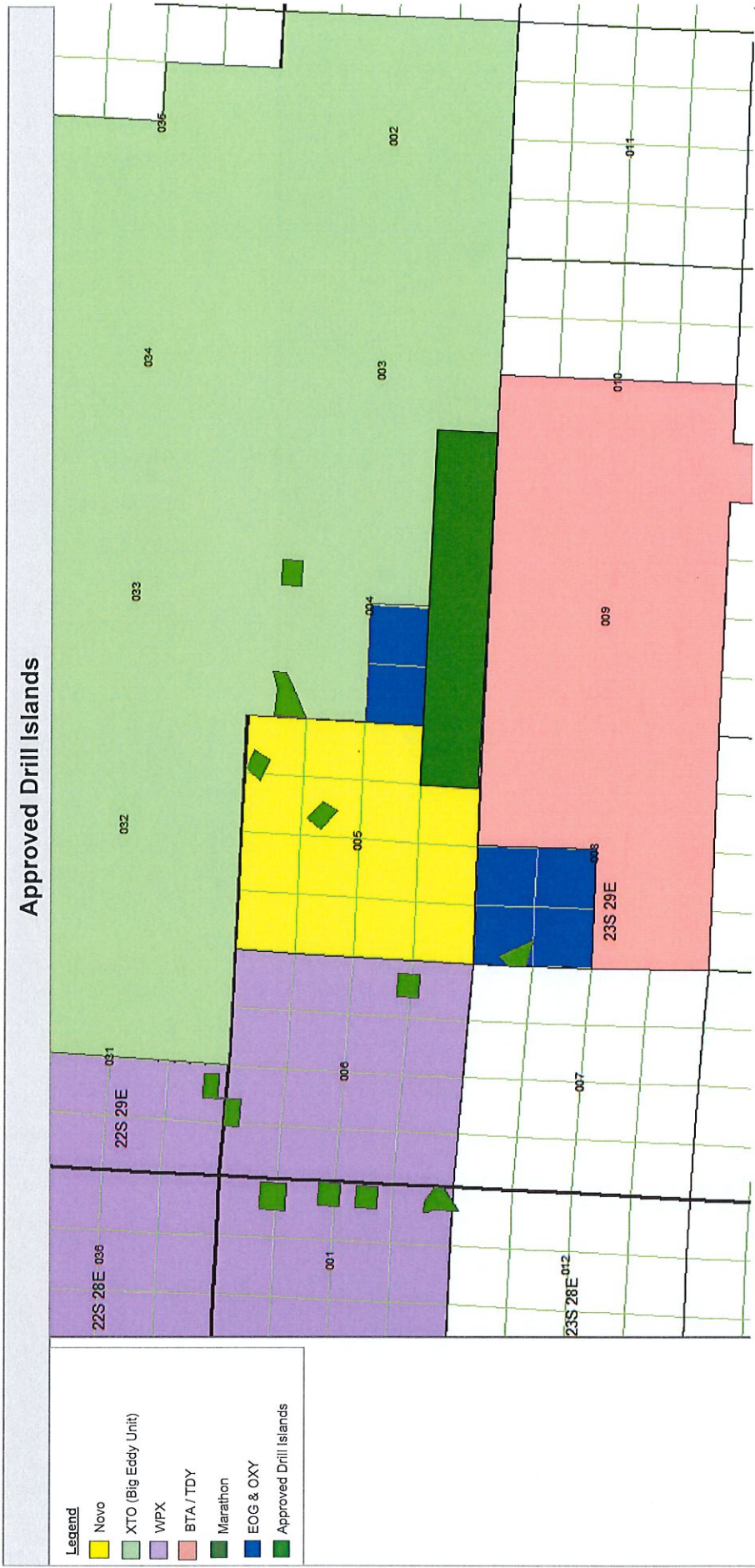
# Exhibit: 12 Potash Constraints







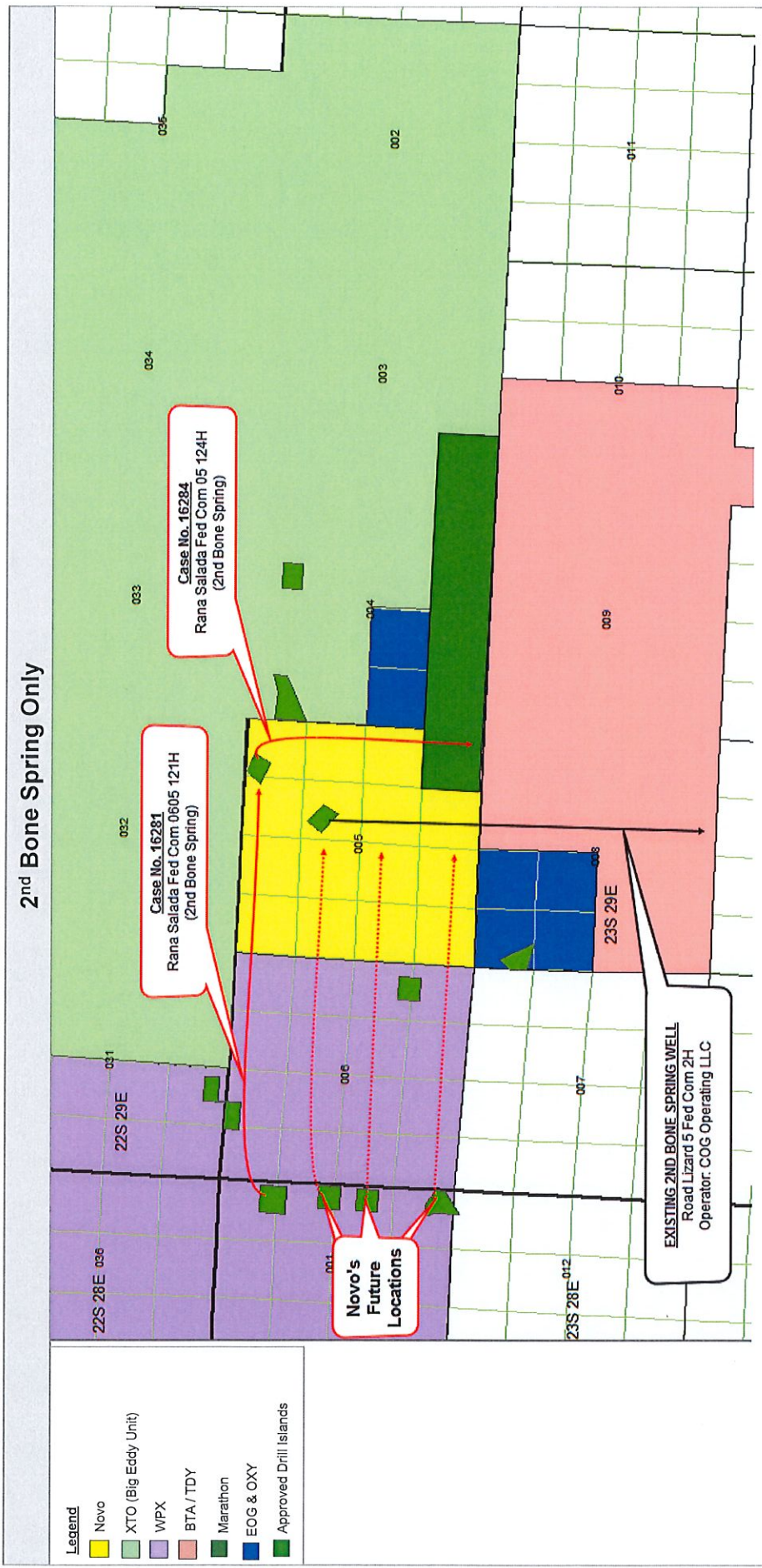
# Surface Locations



Novo worked with the BLM and offset operators to identify drill island locations to facilitate full development of this prospect.



# “Salt Lake” Potential Development



This development plan prevents acreage from being stranded despite the extreme surface and potash constraints. It also avoids conflict with Concho's existing "Road Lizard" well.





# “Salt Lake” Potential Development

