



Exhibit 12

**“Rana Salada”
Field Development Plan**



Exhibit: 12 Surface & Archeological Constraints

Aerial View of "Rana Salada"

- Surface locations are extremely scarce in this area due to:
 - Topography (e.g. the salt lake, drainage areas, bluffs)
 - Archeology
 - Potash Limitations

Amount of well pads sharply drops off

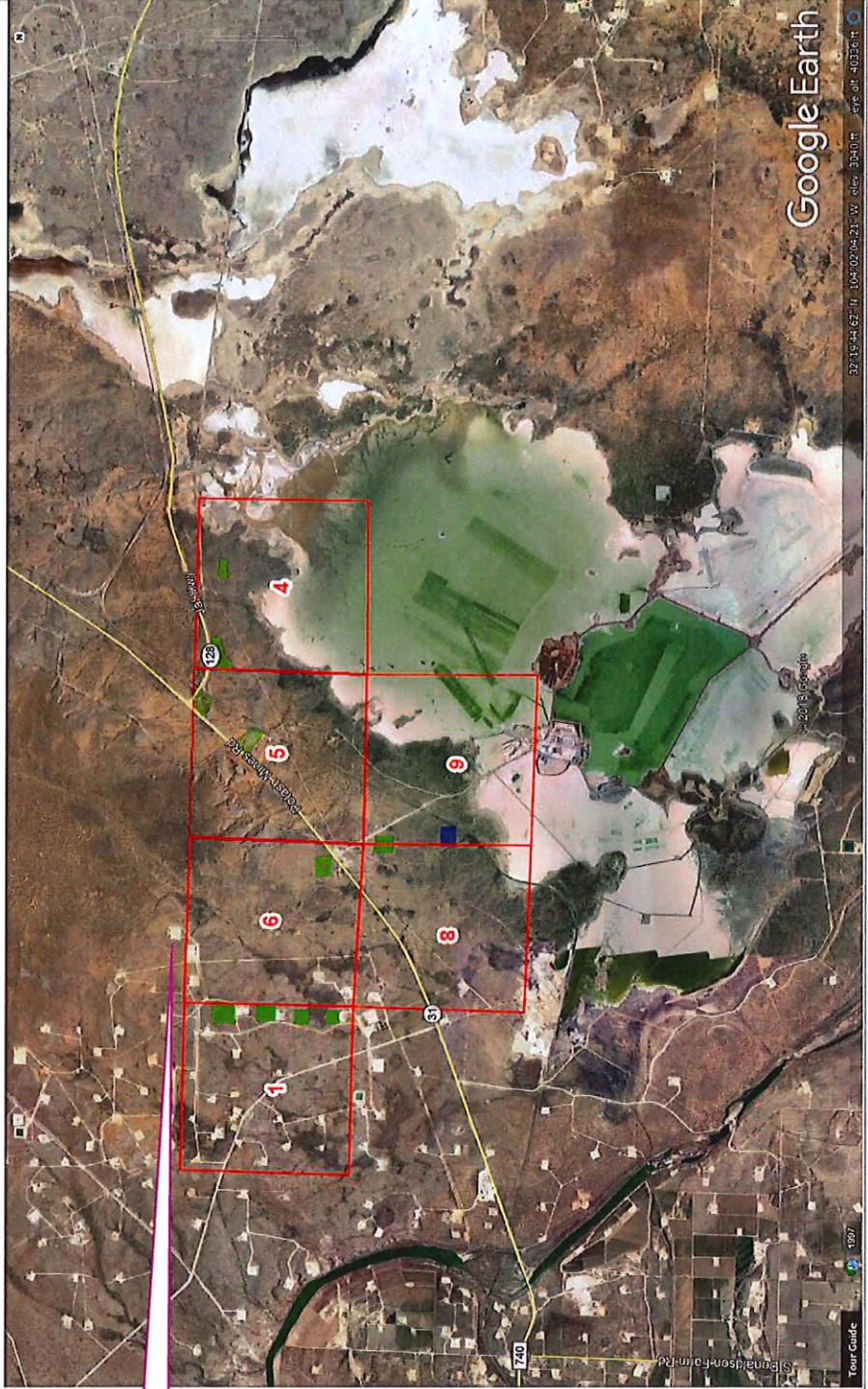
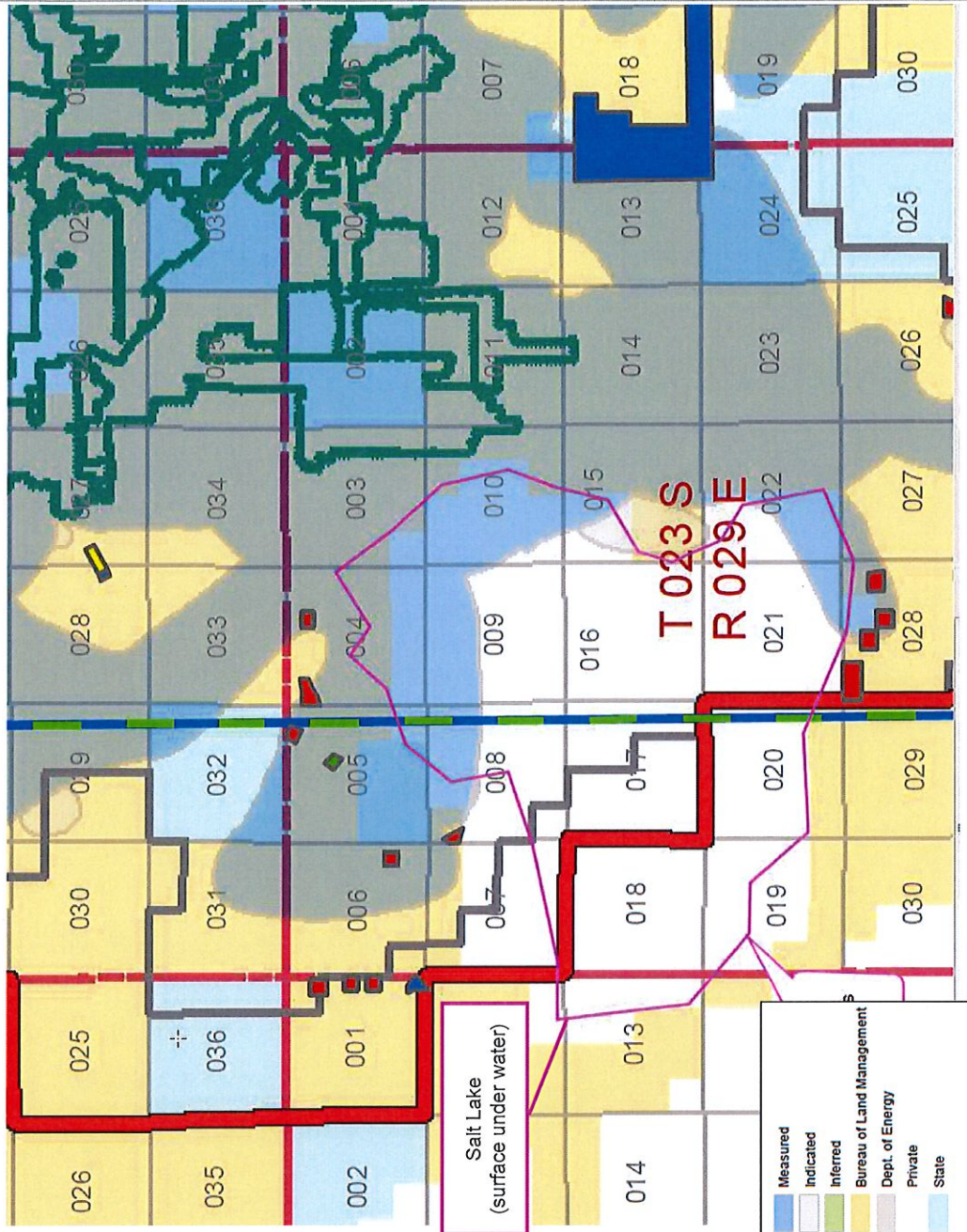




Exhibit: 12 Potash Constraints

BLM-Issued Potash Map (4/6/2018 Version)

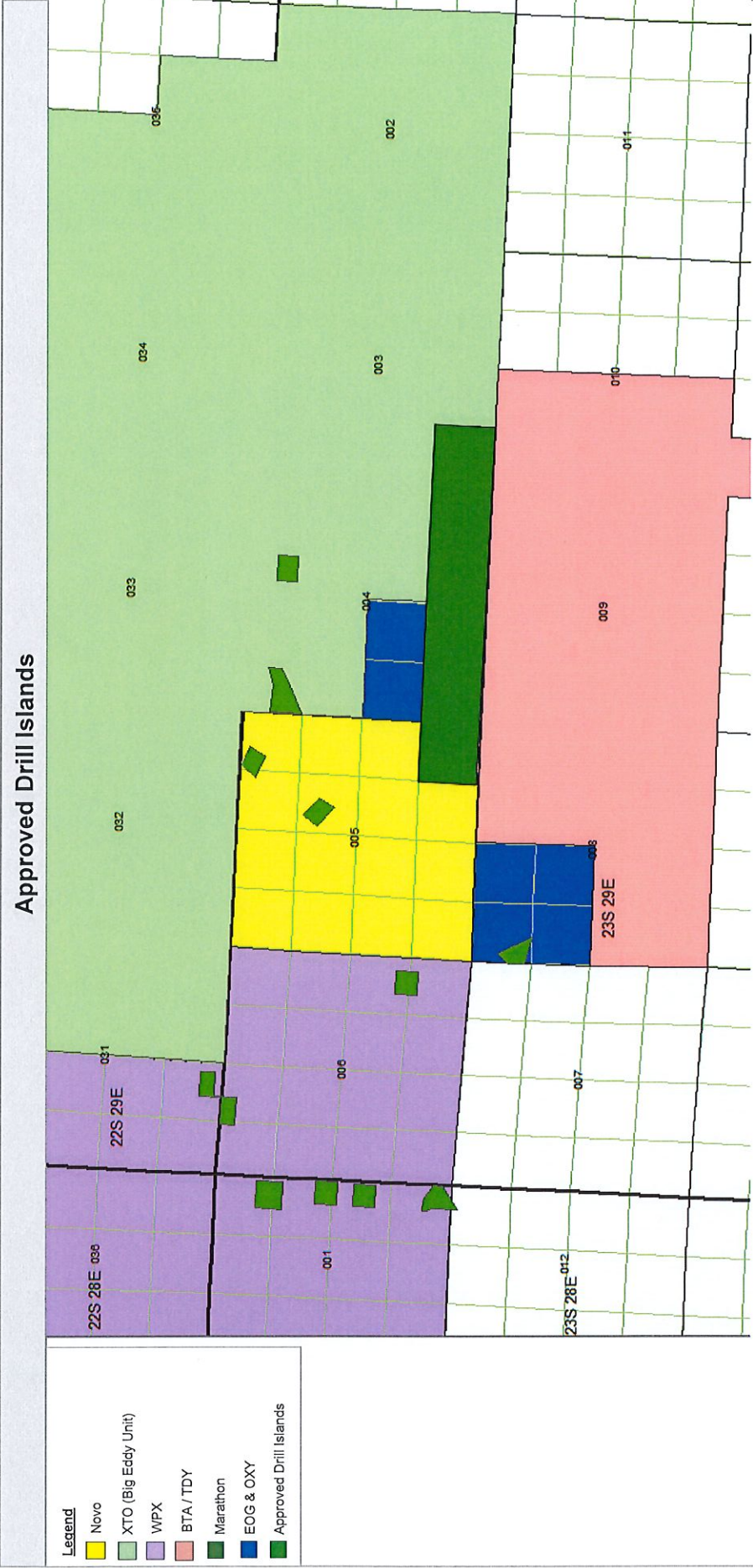
Obtaining drill islands is extremely difficult because there is a very small number of locations that are both not encroaching on potash and not limited by a surface constraint



	Approved, All Depths, NEPA Approved		PA Boundary
	Approved, All Depths, Need NEPA		NM Townships
	Approved, Shallow, NEPA Approved		NM Sections
	Approved, Shallow, Need NEPA		2012 Secretary Potash Area
	Nominated, All Depths		KPLA
	Nominated, Shallow		WIPP
	NM Cities & Towns		Captain Aquifer
	Mine Workings 2012		



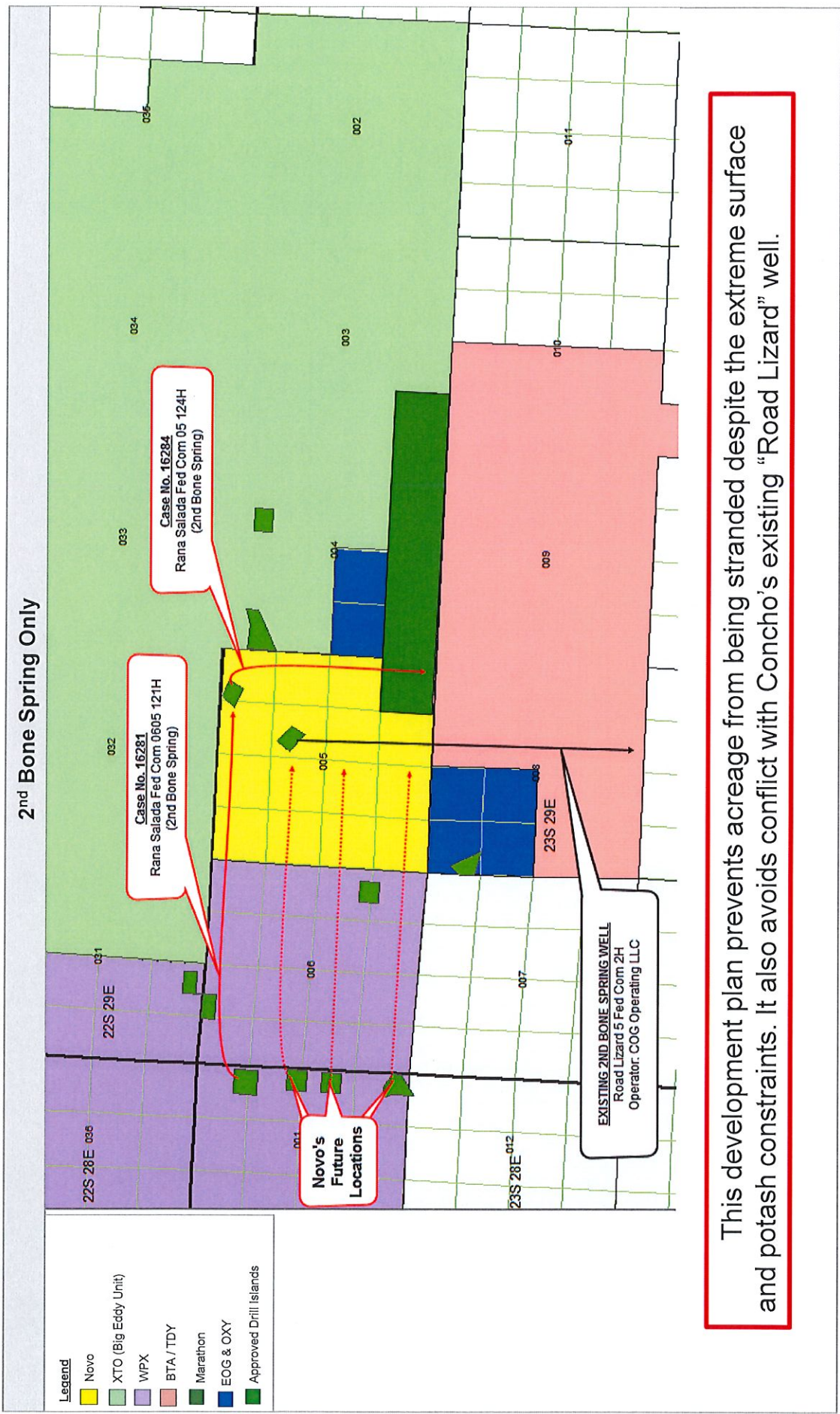
Surface Locations



Novo worked with the BLM and offset operators to identify drill island locations to facilitate full development of this prospect.



“Salt Lake” Potential Development



This development plan prevents acreage from being stranded despite the extreme surface and potash constraints. It also avoids conflict with Concho's existing "Road Lizard" well.



“Salt Lake” Potential Development

