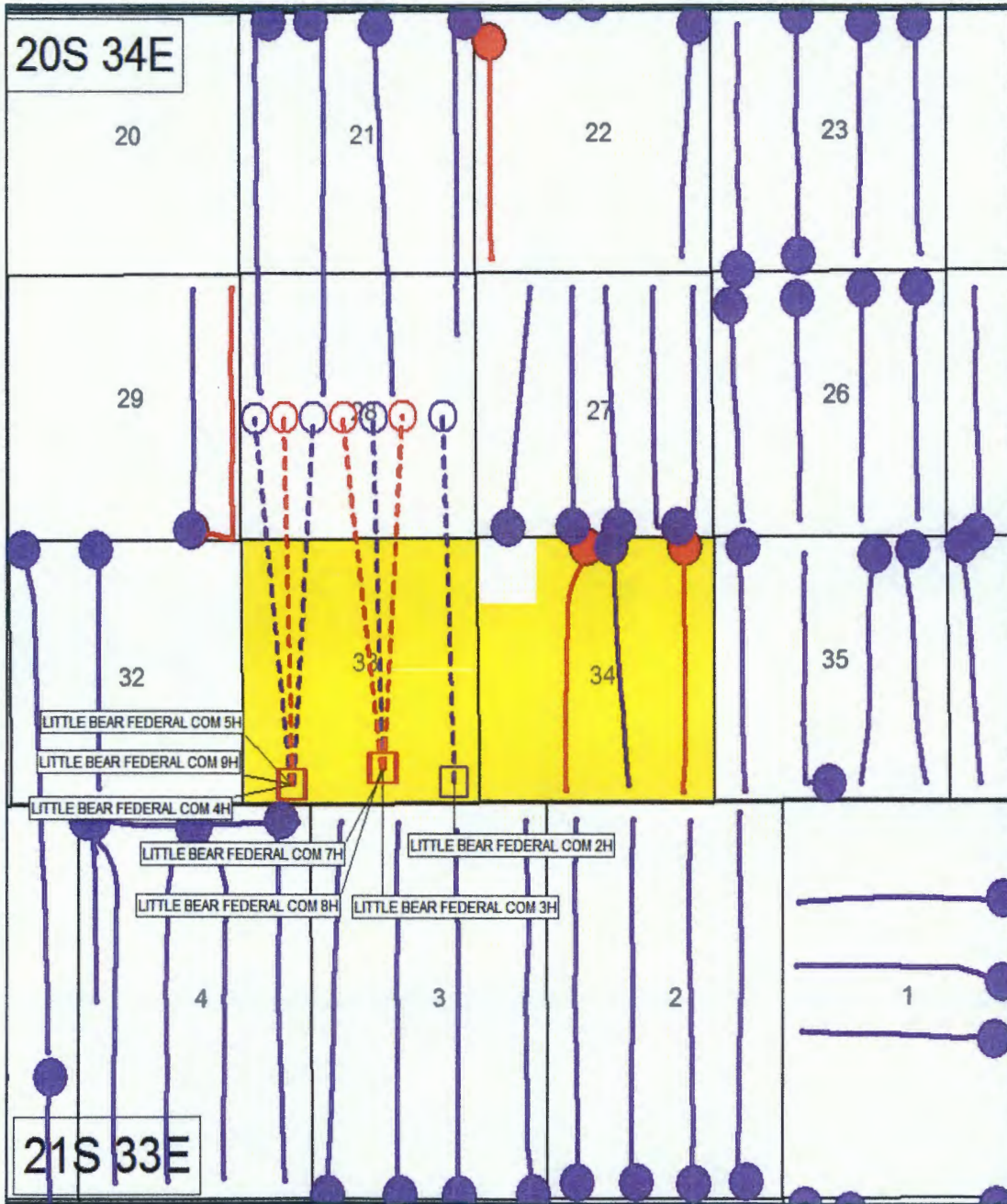


**LITTLE BEAR Project**  
 Little Bear Federal Com  
 Sections 28 & 33 T20S-R34E



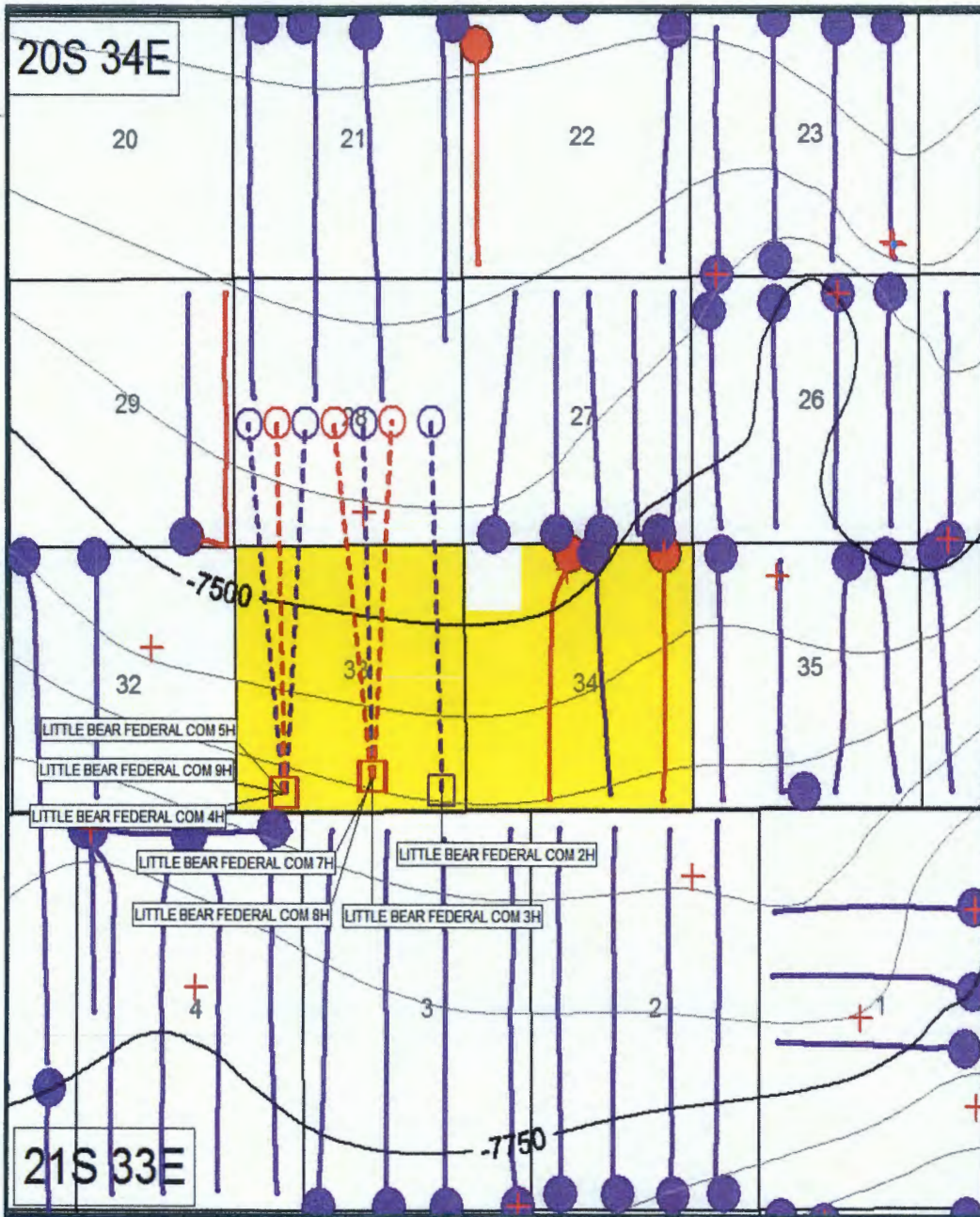
**Map Legend**

- SHL  — COG – Wolfcamp A Horizontal Location
- BHL  — COG – 3<sup>RD</sup> Bone Spring Horizontal Location
- — Producing Wolfcamp A Wells
- SHL  — COG – 3<sup>RD</sup> Bone Spring Horizontal Location
- BHL  — COG – 3<sup>RD</sup> Bone Spring Horizontal Location
- — Producing 3<sup>rd</sup> Bone Spring Wells
- COG Acreage












BEFORE THE OIL CONSERVATION DIVISION  
 Santa Fe, New Mexico  
 Case Nos. 16328, 16329, 16330, 16331,  
 16333, 16334 & 16335 Exhibit No. 5  
 Submitted by:  
**COG OPERATING LLC**  
 Hearing Date: August 9, 2018

**LITTLE BEAR Project**  
 Little Bear Federal Com  
 Sections 28 & 33 T20S-R34E



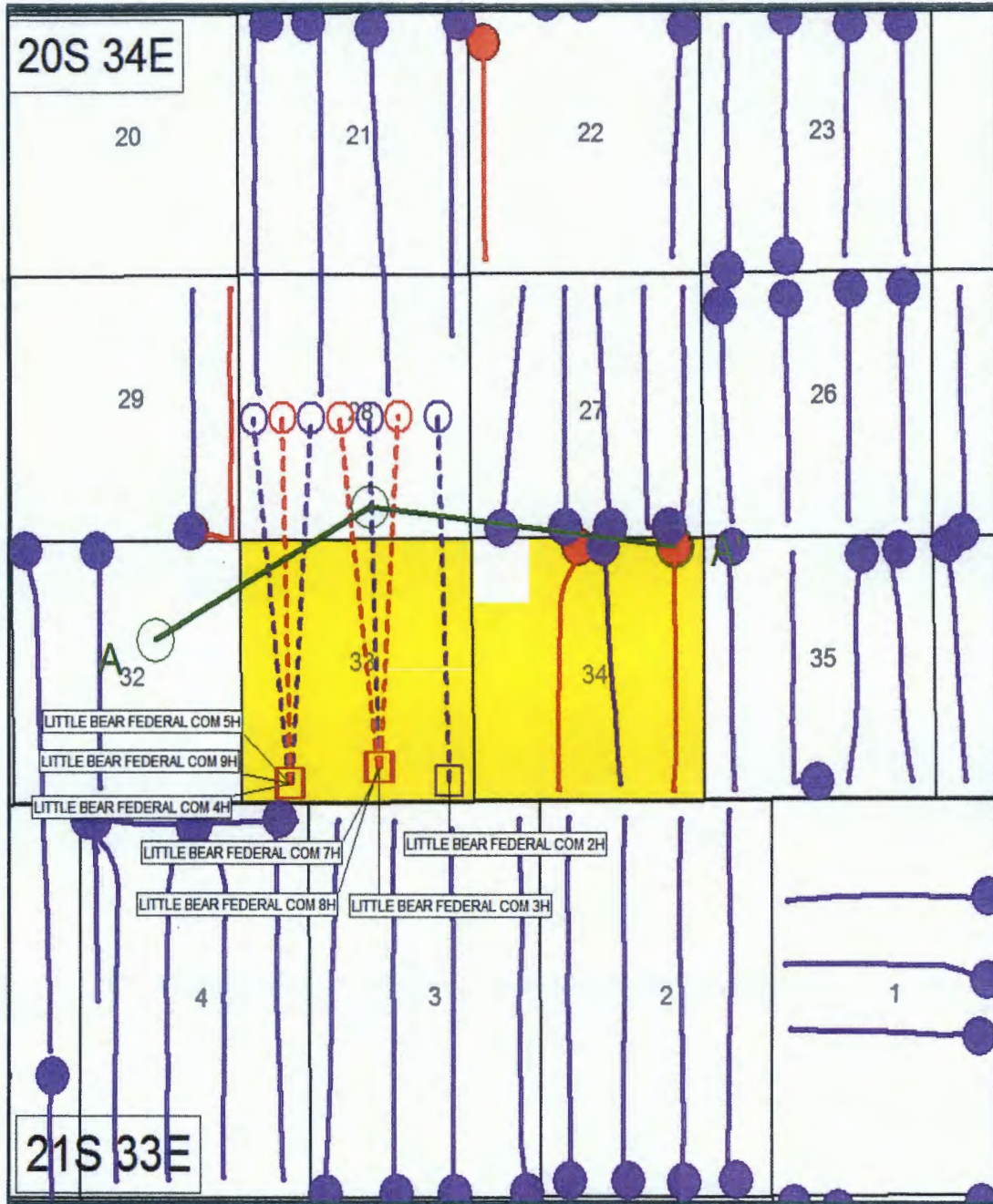
**Map Legend**

-   COG – Wolfcamp A Horizontal Location
-  Producing Wolfcamp A Wells
-   COG – 3<sup>RD</sup> Bone Spring Horizontal Location
-  Producing 3<sup>RD</sup> Bone Spring Wells
-  Wolfcamp Structure  
CI: 50'
-  Data Point
-  COG Acreage



BEFORE THE OIL CONSERVATION DIVISION  
 Santa Fe, New Mexico  
 Case Nos. 16328, 16329, 16330, 16331,  
 16333, 16334 & 16335 Exhibit No. 6  
 Submitted by:  
**COG OPERATING LLC**  
 Hearing Date: August 9, 2018

**LITTLE BEAR Project**  
 Little Bear Federal Com  
 Sections 28 & 33 T20S-R34E



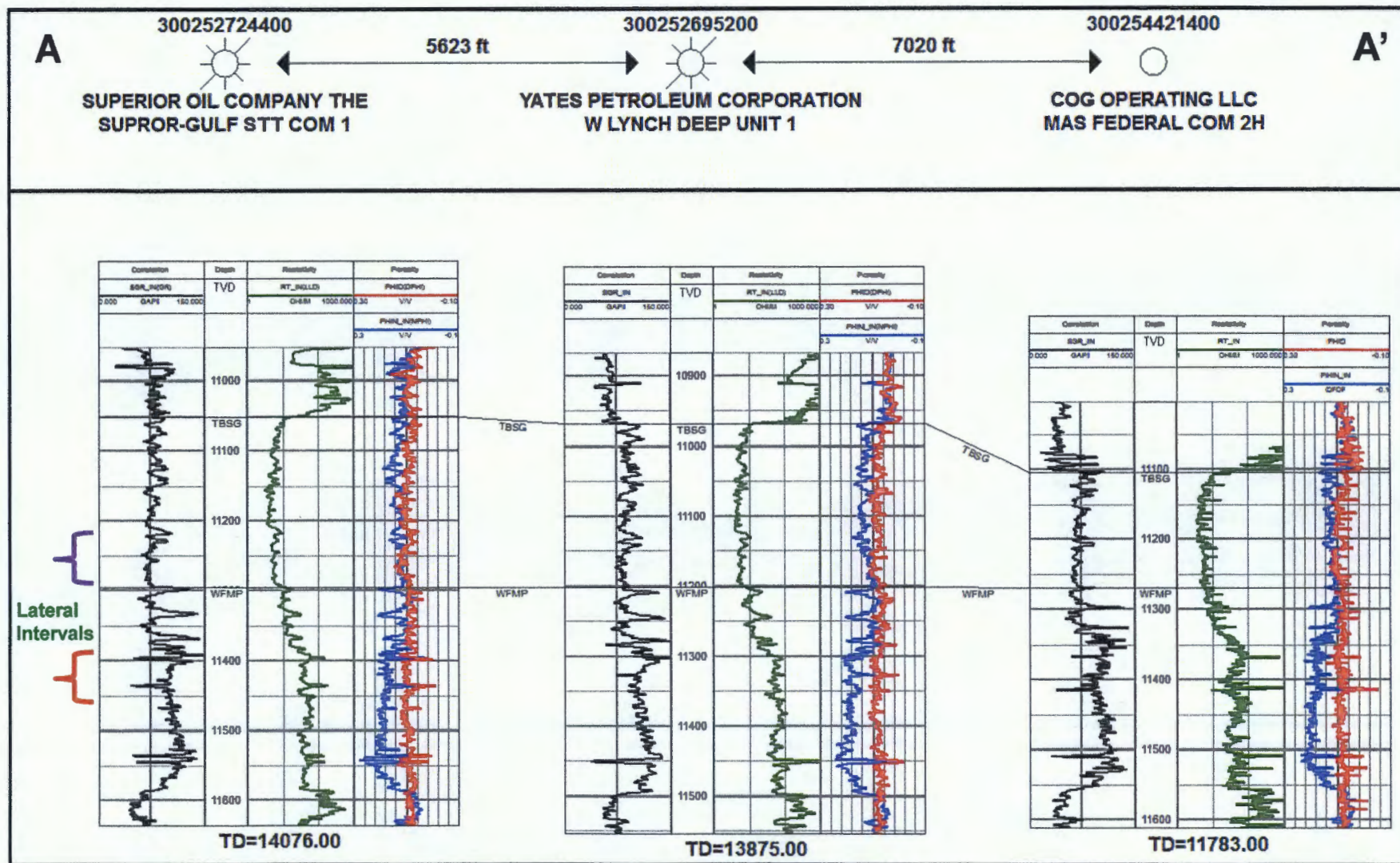
**Map Legend**

- COG - Wolfcamp A Horizontal Location
- Producing Wolfcamp A Wells
- COG - 3<sup>RD</sup> Bone Spring Horizontal Location
- Producing 3<sup>RD</sup> Bone Spring Wells
- Cross Section Line
- COG Acreage



BEFORE THE OIL CONSERVATION DIVISION  
 Santa Fe, New Mexico  
 Case Nos. 16328, 16329, 16330, 16331,  
 16333, 16334 & 16335 Exhibit No. 7  
 Submitted by:  
**COG OPERATING LLC**  
 Hearing Date: August 9, 2018

# Stratigraphic Cross Section A – A'



BEFORE THE OIL CONSERVATION DIVISION  
 Santa Fe, New Mexico  
 Case Nos. 16328, 16329, 16330, 16331,  
 16333, 16334 & 16335 Exhibit No. 8  
 Submitted by:  
**COG OPERATING LLC**  
 Hearing Date: August 9, 2018