

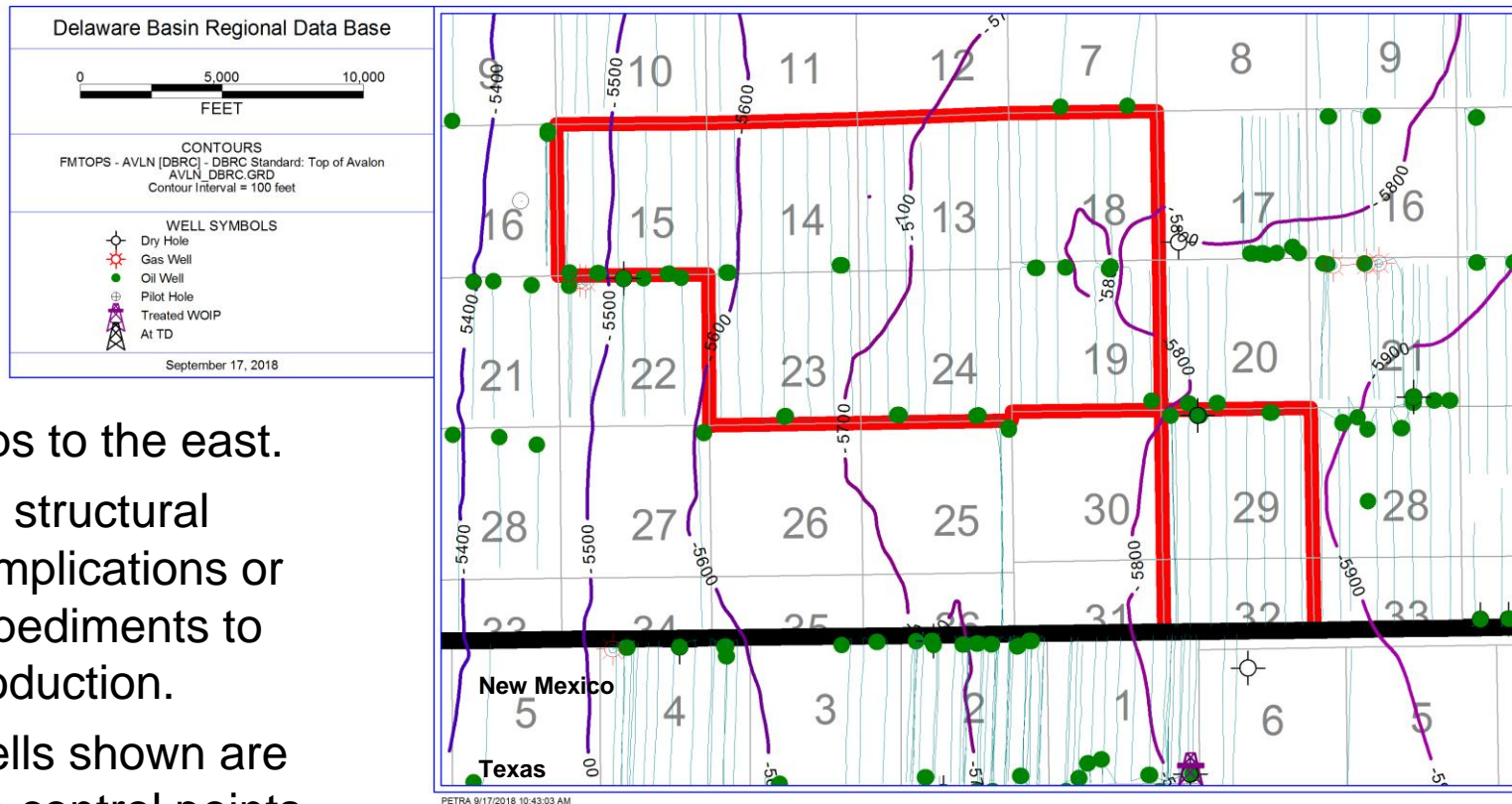


human energy®

# Salado Draw Sections 29 & 32, T26S, R33E, Lea County

## Supplement Document

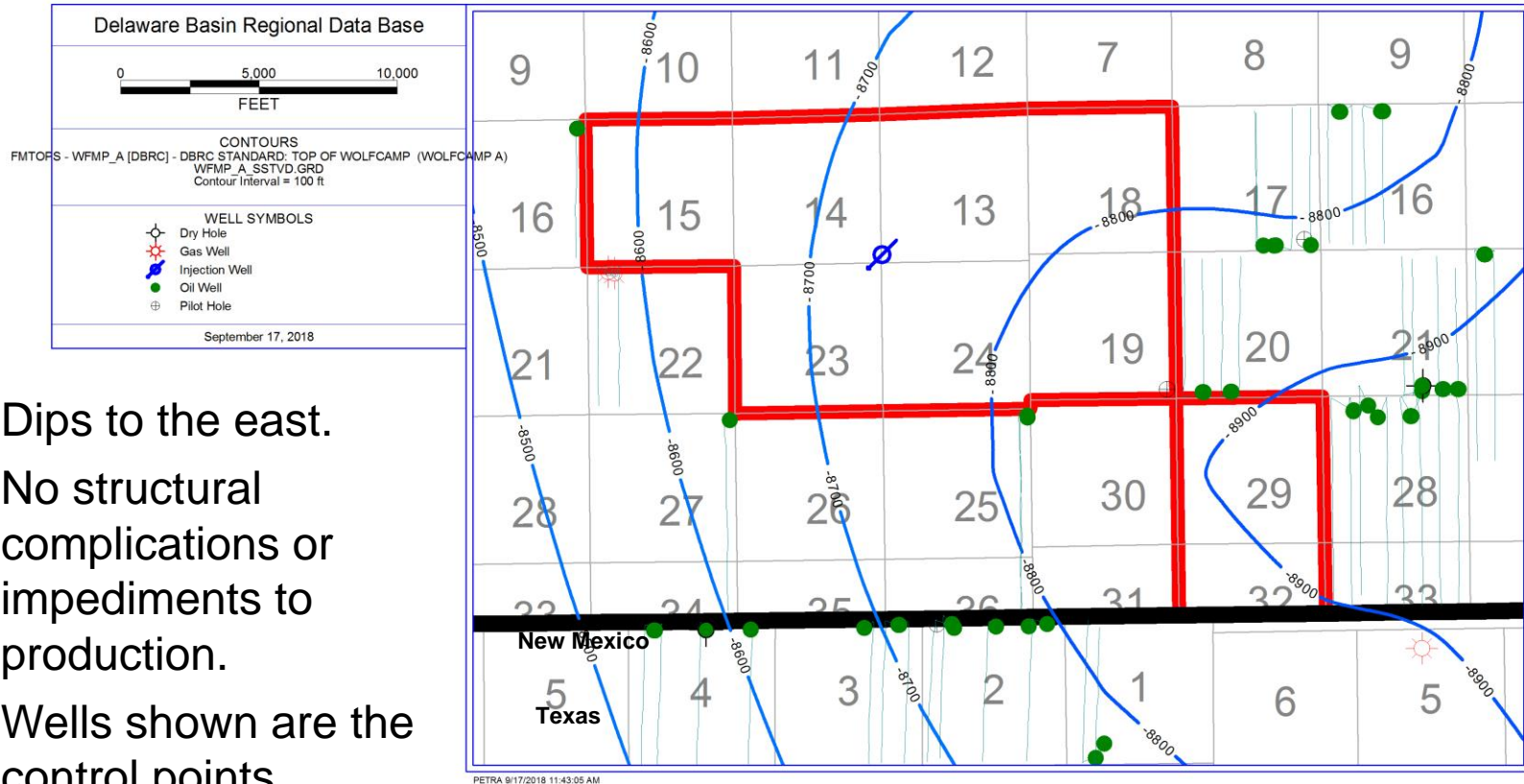
# Top Avalon Structure Map



- Dips to the east.
- No structural complications or impediments to production.
- Wells shown are the control points.



# Top Wolfcamp Structure Map

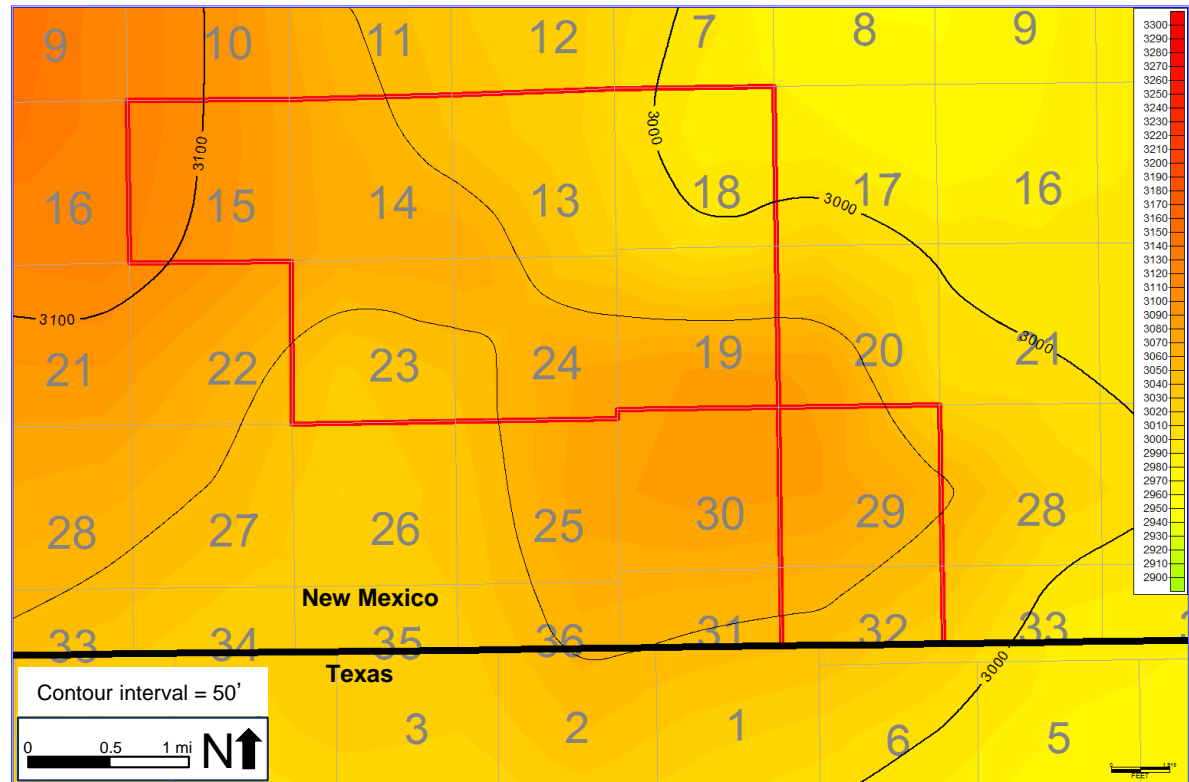


- Dips to the east.
- No structural complications or impediments to production.
- Wells shown are the control points.



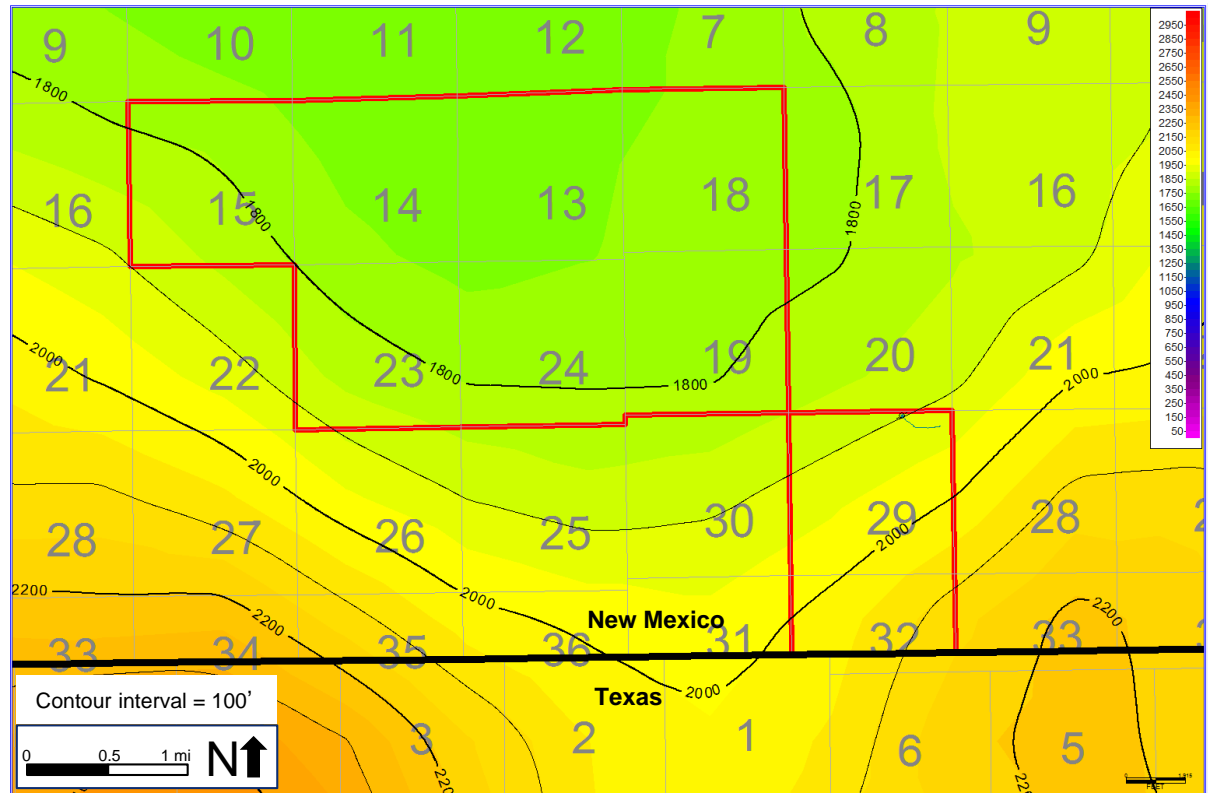
# Gross Isopach Thickness of the Bone Spring

- Thickness in the Bone Springs ranges from 2990' to 3110', generally increasing to the northwest.
- No stratigraphic complexities or impediments to production.



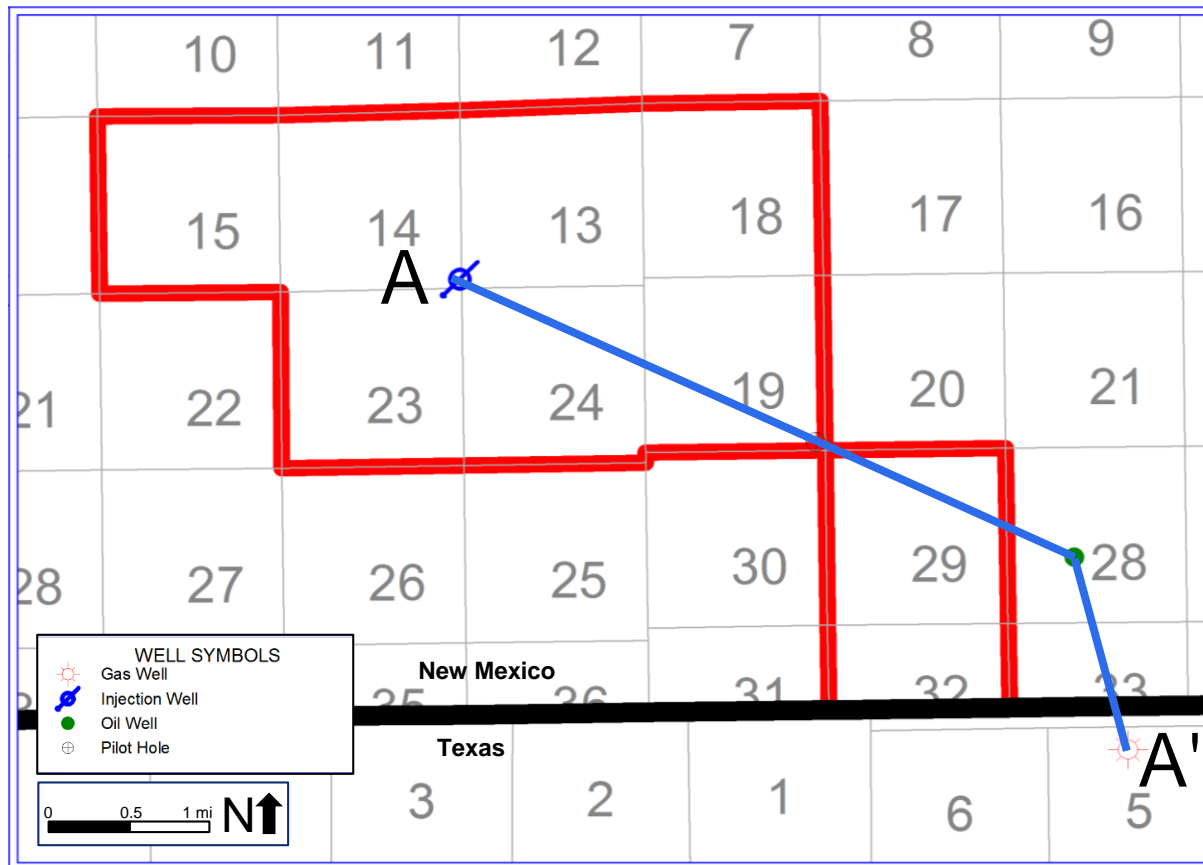
# Gross Isopach Thickness of the Wolfcamp

- Thickness in the Wolfcamp ranges from 1720' to 2160', generally increasing to the south.
- No stratigraphic complexities or impediments to production.



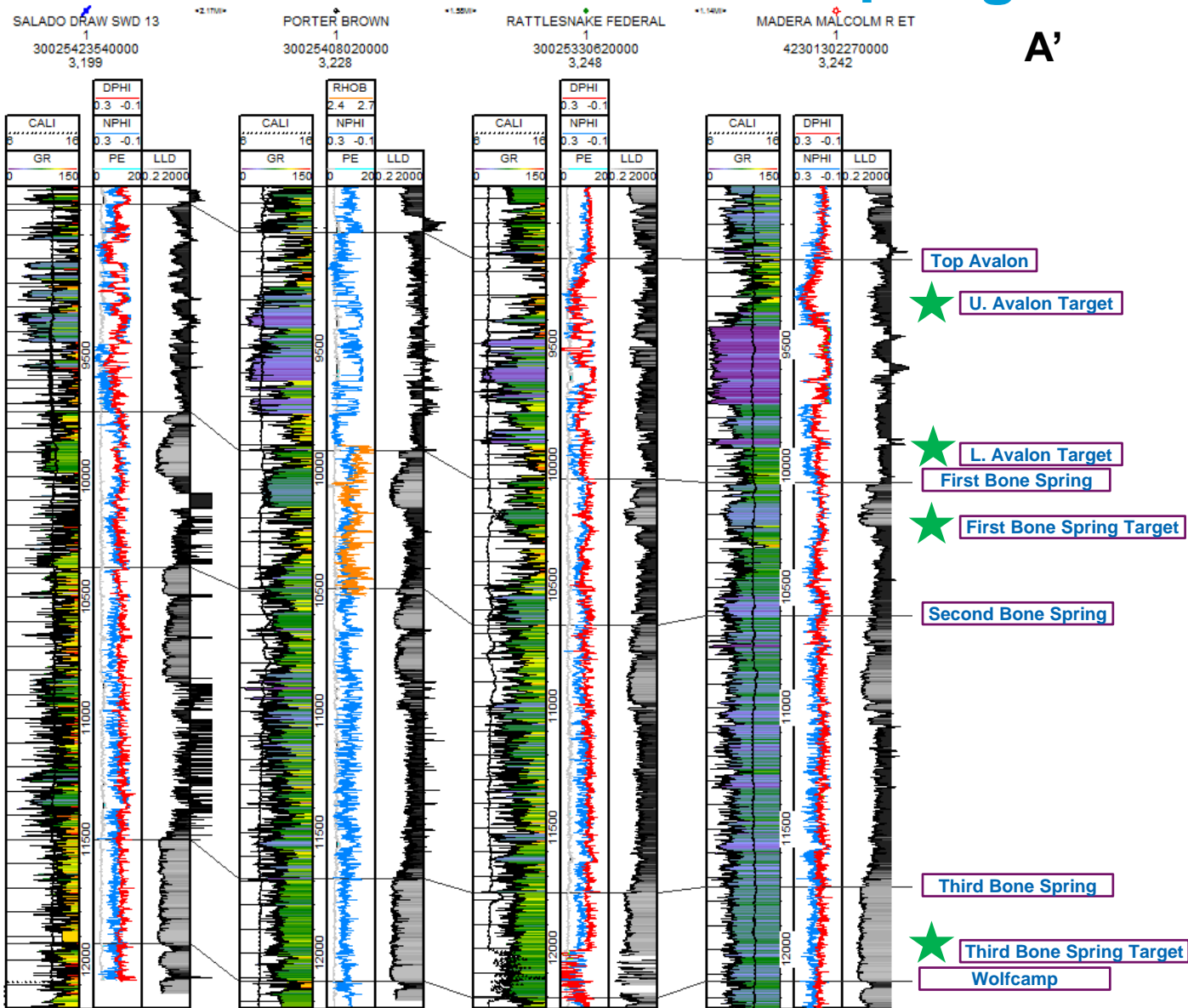
# Cross Section Location Map

- All cross-sections in this presentation use the same 4 wells and only vary the depths displayed



# Cross Section of Bone Spring

A



A'



# Cross Section of Wolfcamp

A

SALADO DRAW SWD 13  
1  
30025423540000  
3,199

<2.17Mi>

PORTER BROWN  
1  
30025408020000  
3,228

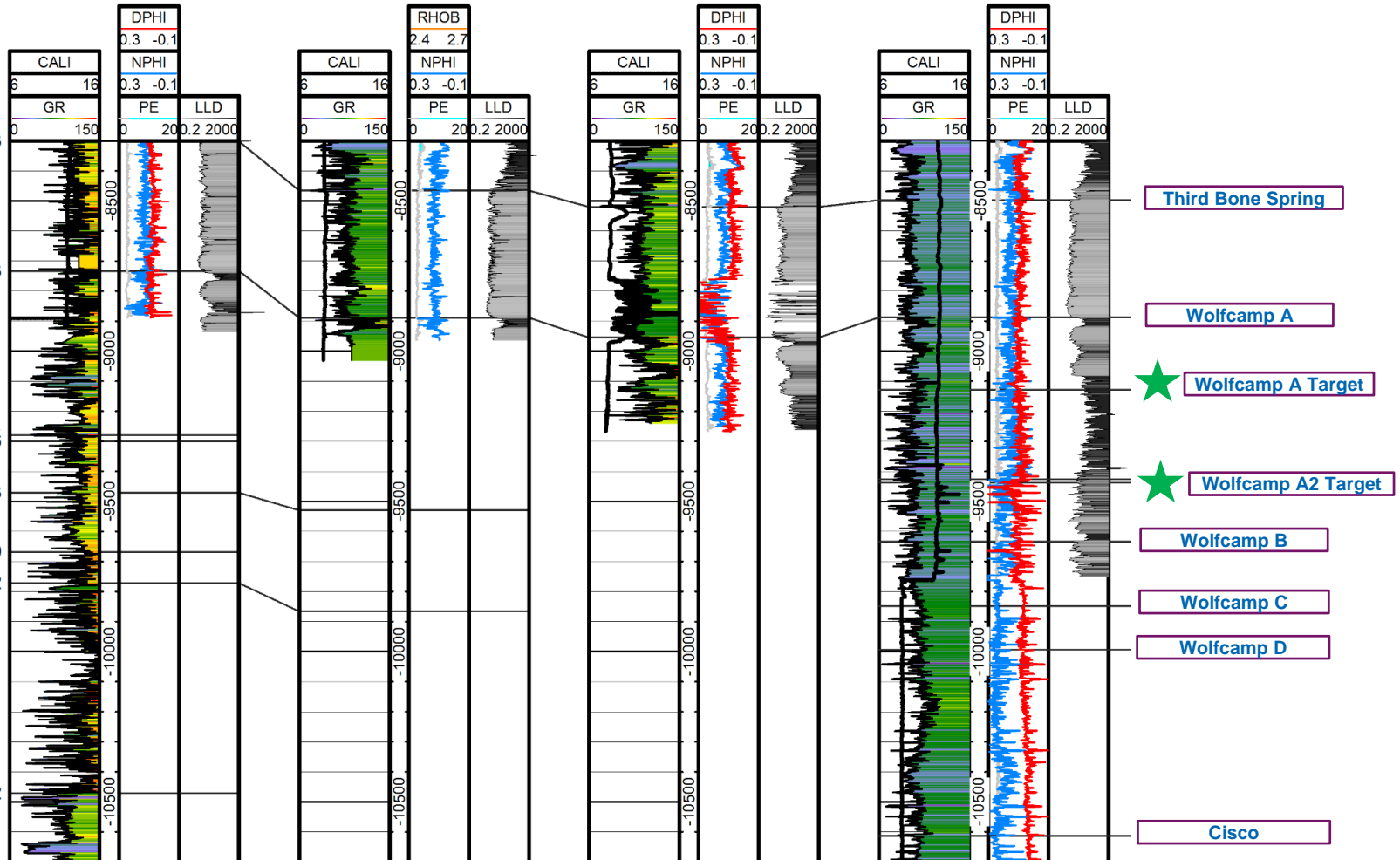
<1.58Mi>

RATTLESNAKE FEDERAL  
1  
30025330620000  
3,248

<1.14Mi>

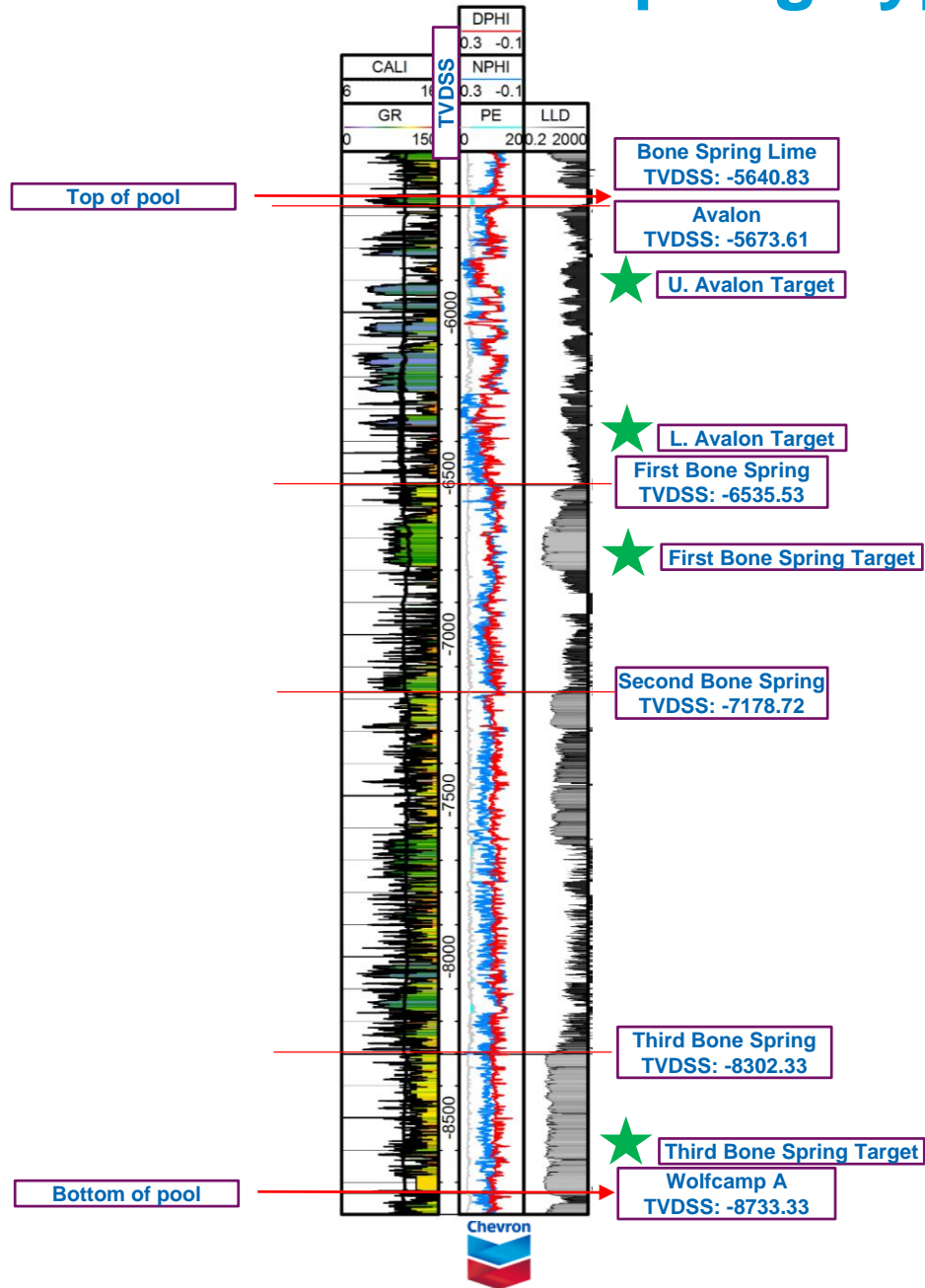
MADERA MALCOLM R ET  
1  
42301302270000  
3,242

A'

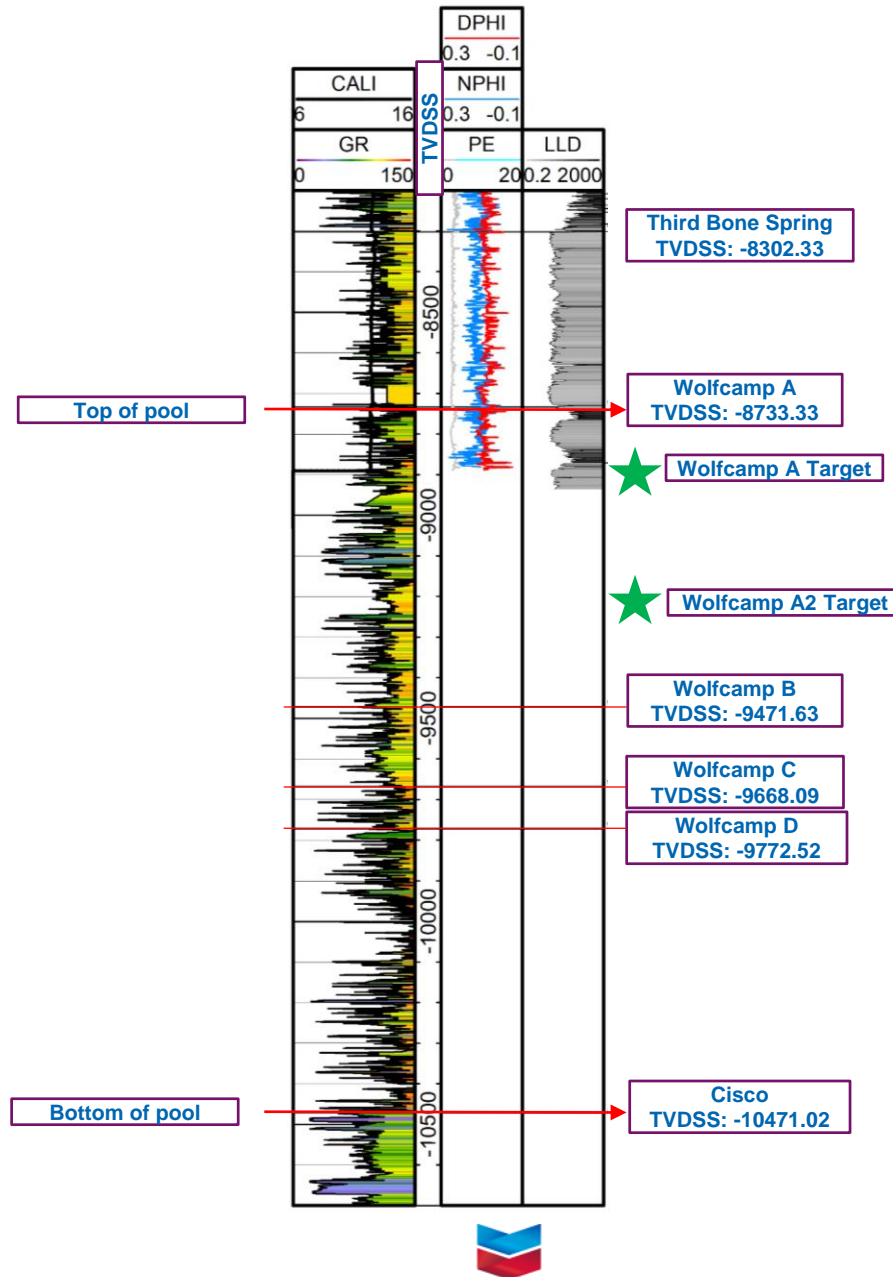







# Salado SWD 13 Bone Spring Type Well

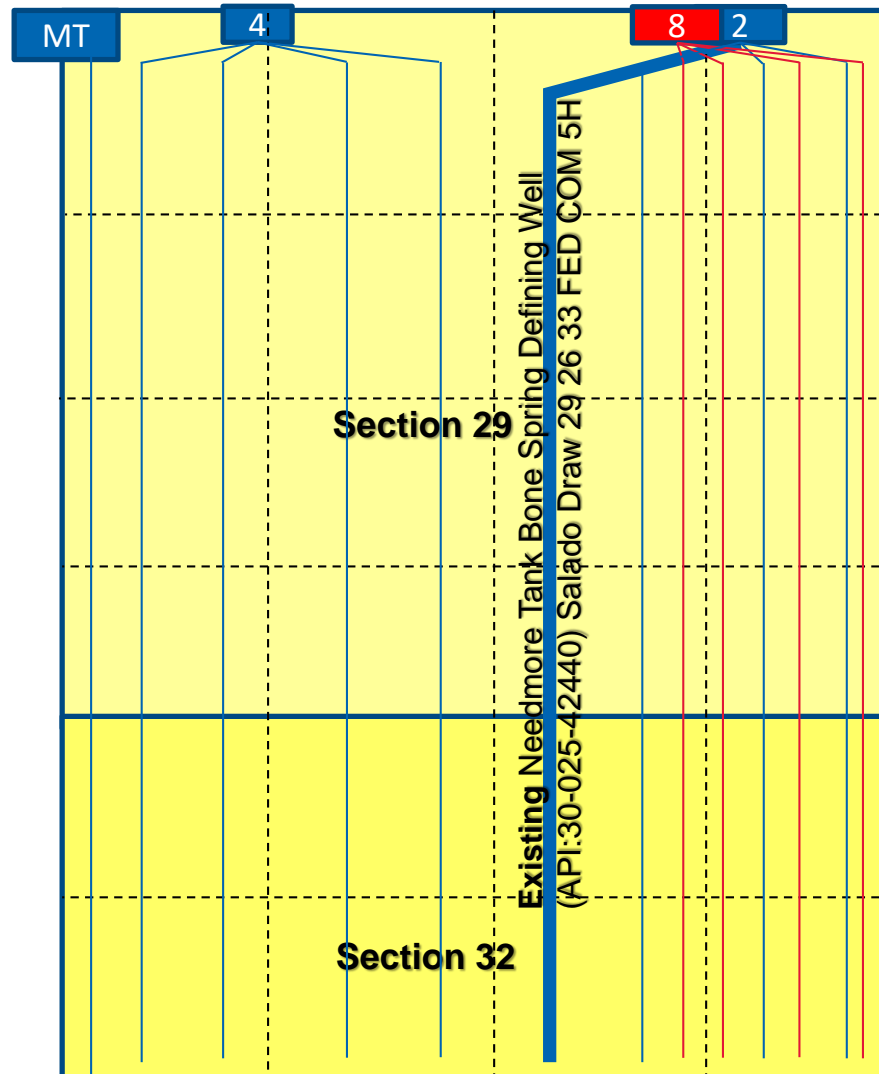


# Salado SWD 13 Wolfcamp Type Well



# Existing Needmore Tank Bone Spring Defining Well

- Existing Bone Spring Pads 
- Existing Wolfcamp Pad 
- Existing Bone Spring Defining Well (API:30-025-42440)  
Salado Draw 29 26 33 FED  
COM 5H 



\*Note: Not to scale



# C-102 Bone Spring Defining Well

District I  
1423 N. French Dr., Hobbs, NM 88240  
Phone: (575) 393-6161 Fax: (575) 393-6720  
District II  
811 S. First St., Artesia, NM 88210  
Phone: (575) 748-1283 Fax: (575) 748-4728  
District III  
1000 Rio Bravo Road, Alamogordo, NM 88410  
Phone: (505) 334-6178 Fax: (505) 334-6179  
District IV  
1220 S. St. Francis Dr., Santa Fe, NM 87505  
Phone: (505) 476-3480 Fax: (505) 476-3482

State of New Mexico  
Energy, Minerals & Natural Resources Department  
OIL CONSERVATION DIVISION  
1220 South St. Francis Dr.  
Santa Fe, NM 87505

Form C-102  
Revised August 1, 2011  
Submit one copy to appropriate  
District Office

AMENDED REPORT

## WELL LOCATION AND ACREAGE DEDICATION PLAT

1 API Number 30-025-42440		2 Pool Code 97955		3 Pool Name WC-025 G 06 9263319P; BONE SPRING	
4 Property Code 314194		5 Property Name SALADO DRAW 29 26 33 FED COM			6 Well Number 5H
7 OGRID No 4323		8 Operator Name CHEVRON U.S.A. INC.			9 Elevation 3247'

### 10 Surface Location

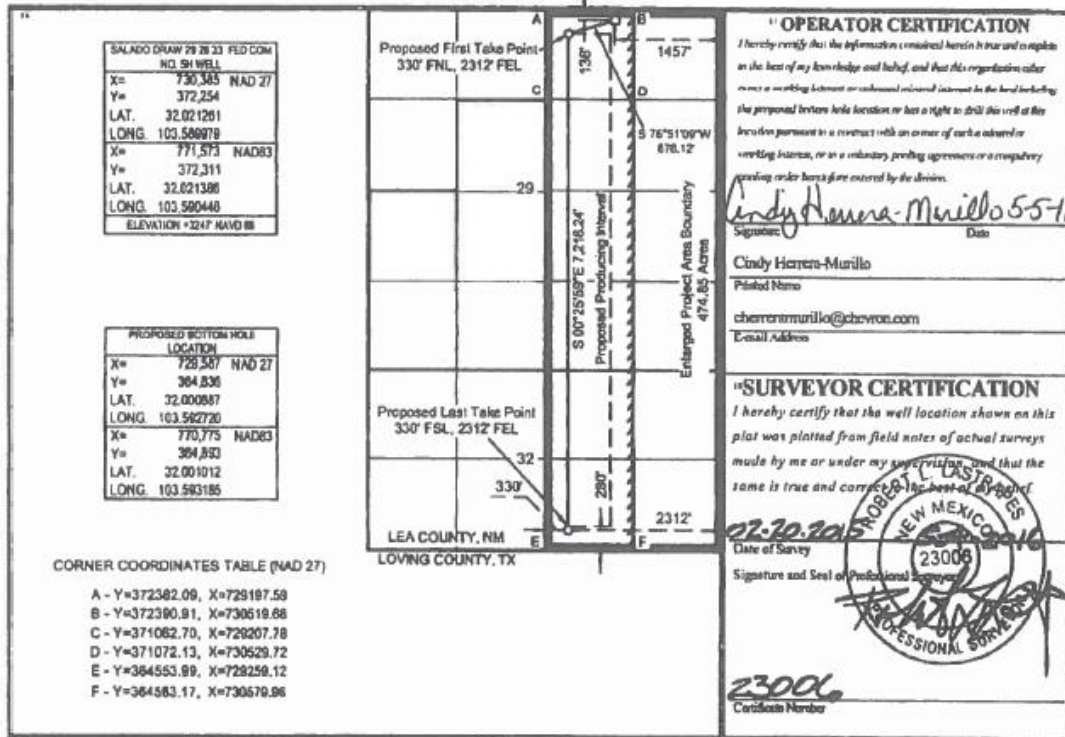
UL or lot no.	Section	Township	Range	Lot Idn	Feet from the	North/South line	Feet from the	East/West line	County
B	29	26 SOUTH	33 EAST, N.M.P.M.		136'	NORTH	1457'	EAST	LEA

### 11 Bottom Hole Location If Different From Surface

UL or lot no.	Section	Township	Range	Lot Idn	Feet from the	North/South line	Feet from the	East/West line	County
G	32	26 SOUTH	33 EAST, N.M.P.M.		280'	SOUTH	2312'	EAST	LEA

12 Dedicated Acres	13 Joint or Infill	14 Consolidation Code	15 Order No
474.85			

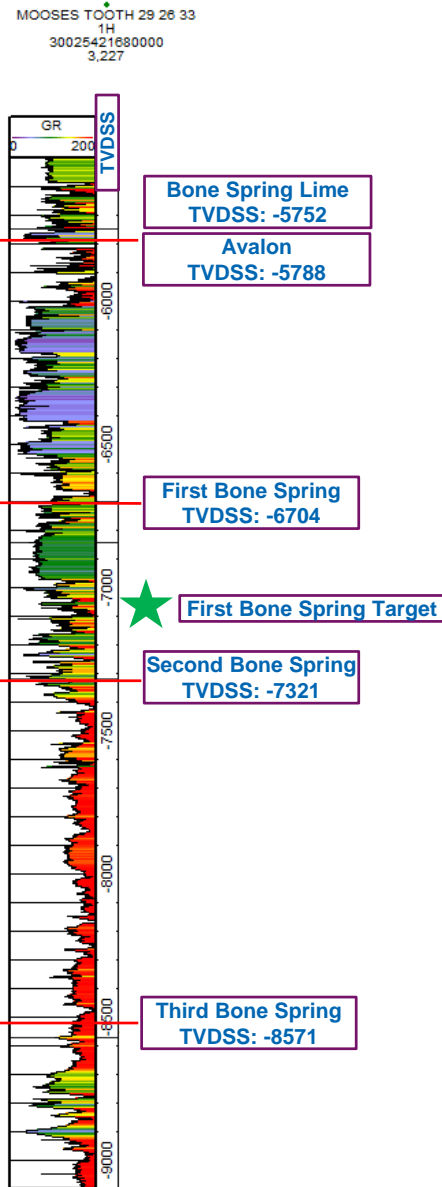
No allowable will be assigned to this completion until all interests have been consolidated or a non-standard unit has been approved by the division.






# Needmore Tank Bone Spring Discovery Well GR Log

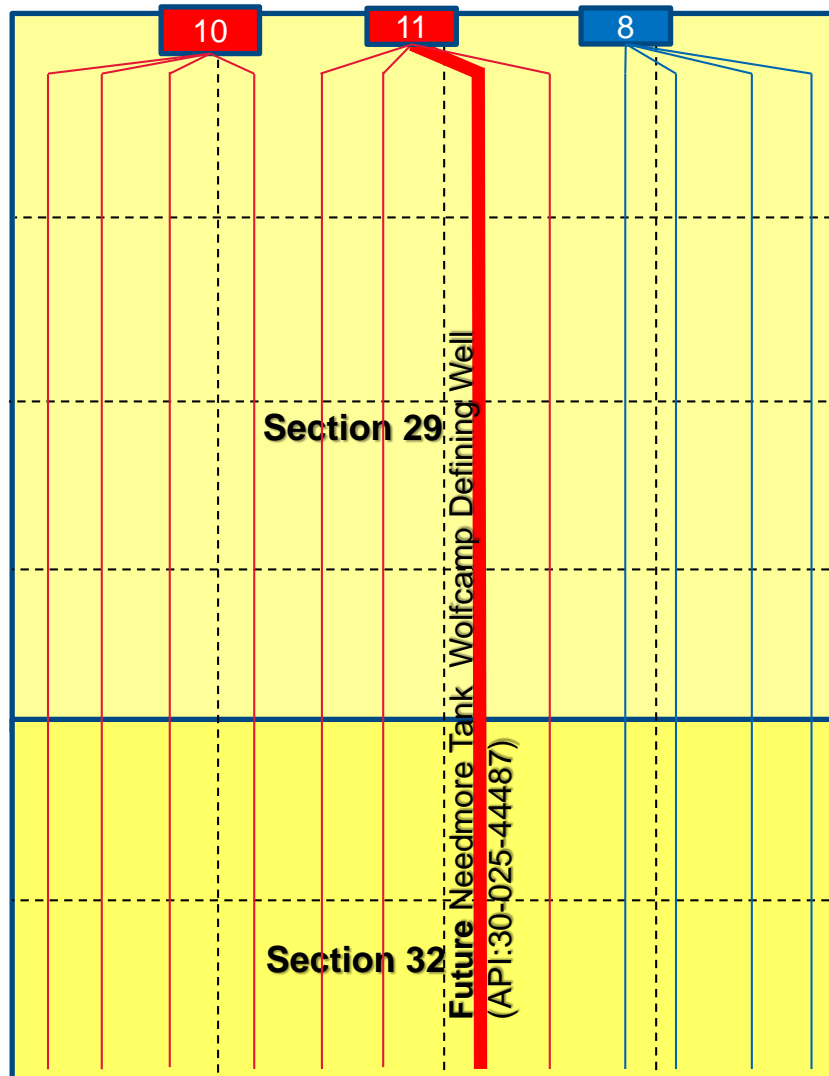
Moose Tooth 29 26 33 1H  
30-025-42168

Top perf: 10,334' TVD  
10,583' MD



# Future Needmore Tank Wolfcamp Defining Well

- Existing Wolfcamp Pad 
- Future Wolfcamp Pads 
- Future Wolfcamp Defining Well   
(API:30-025-44487)



\*Note: Not to scale



# C-102 Wolfcamp Defining Well

District I  
 1425 N. French Dr., Hobbs, NM 88240  
 Phone: (505) 393-6161 Fax: (505) 393-0729  
 District II  
 811 S. First St., Artesia, NM 88210  
 Phone: (505) 748-1283 Fax: (505) 748-1284  
 District III  
 1000 Rio Pecos Road, Artesia, NM 87413  
 Phone: (505) 334-6178 Fax: (505) 334-6170  
 District IV  
 1220 S. St. Francis Dr., Santa Fe, NM 87505  
 Phone: (505) 476-3460 Fax: (505) 476-3462

FEB 15 2010  
 RECEIVED

State of New Mexico  
 Energy, Minerals & Natural Resources Department  
 OIL CONSERVATION DIVISION  
 1220 South St. Francis Dr.  
 Santa Fe, NM 87505

Form C-102  
 Revised August 1, 2011  
 Submit one copy to appropriate  
 District Office  
 AMENDED REPORT

## WELL LOCATION AND ACREAGE DEDICATION PLAT

<sup>1</sup> API Number 30-025-44487	<sup>2</sup> Pool Code 98097	<sup>3</sup> Pool Name SANDERS TANK WC0256998263127G; UPPER WOLFCAMP
<sup>4</sup> Property Code 320787	<sup>5</sup> Property Name SD EA 29 32 FED COM P10	
<sup>6</sup> GRID No. 4323	<sup>7</sup> Operator Name CHEVRON U.S.A. INC.	<sup>8</sup> Well Number 1911
<sup>9</sup> Elevation 3237		

UL or lot no.	Section	Township	Range	Lot Idn	Feet from the	North/South line	Feet from the	East/West line	County
B	29	26 SOUTH	33 EAST, N.M.P.M.		120'	NORTH	2633'	EAST	LEA

### Bottom Hole Location If Different From Surface

UL or lot no.	Section	Township	Range	Lot Idn	Feet from the	North/South line	Feet from the	East/West line	County
G	32	26 SOUTH	33 EAST, N.M.P.M.		180'	SOUTH	2430'	EAST	LEA

<sup>10</sup> Dedicated Acres 237.41	<sup>11</sup> Joint or Infill	<sup>12</sup> Consolidation Code	<sup>13</sup> Order No.
---	-------------------------------	----------------------------------	-------------------------

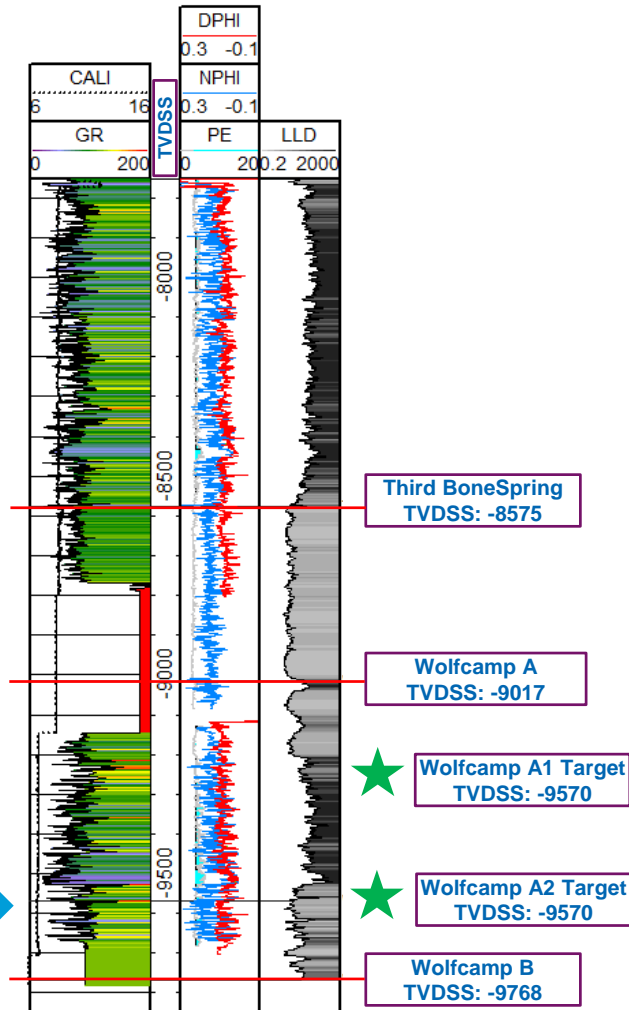
No allowable will be assigned to this completion until all interests have been consolidated or a non-standard unit has been approved by the division.

<table border="1"> <thead> <tr> <th>SD EA 29 32 FED COM P10 NO. 1911 WELL</th> <th>PROPOSED BOTTOM HOLE LOCATION</th> </tr> </thead> <tbody> <tr> <td>X= 729,209 NAD 27 Y= 372,282 LAT. 32.021307 LONG. 103.593774</td> <td>X= 729,469 NAD 27 Y= 364,735 LAT. 32.006512 LONG. 103.593101</td> </tr> <tr> <td>X= 770,397 NAD83 Y= 372,319 LAT. 32.021432 LONG. 103.594240</td> <td>X= 770,657 NAD83 Y= 364,792 LAT. 32.00737 LONG. 103.593566</td> </tr> <tr> <td colspan="2">ELEVATION +3237 NAVD 88</td> </tr> </tbody> </table>	SD EA 29 32 FED COM P10 NO. 1911 WELL	PROPOSED BOTTOM HOLE LOCATION	X= 729,209 NAD 27 Y= 372,282 LAT. 32.021307 LONG. 103.593774	X= 729,469 NAD 27 Y= 364,735 LAT. 32.006512 LONG. 103.593101	X= 770,397 NAD83 Y= 372,319 LAT. 32.021432 LONG. 103.594240	X= 770,657 NAD83 Y= 364,792 LAT. 32.00737 LONG. 103.593566	ELEVATION +3237 NAVD 88		<p> <sup>14</sup> Proposed First Take Point            330' FNL            2430' FEL/2858' FWL         </p> <p> <sup>15</sup> Proposed Last Take Point            330' FSL            2430' FEL/2854' FWL         </p>	<b>" OPERATOR CERTIFICATION</b> I hereby certify that the information contained herein is true and complete to the best of my knowledge and belief, and that this organization either owns a working interest or undivided mineral interest in the land including the proposed bottom hole location or has a right to drill this well at this location pursuant to a contract with an owner of such a mineral or working interest, or to a voluntary pooling agreement or a compulsory pooling order heretofore entered by the division. Denise Pinkerton 06/07/2010 Signature Date Denise Pinkerton Printed Name LP@chevron.com E-mail Address
	SD EA 29 32 FED COM P10 NO. 1911 WELL	PROPOSED BOTTOM HOLE LOCATION								
X= 729,209 NAD 27 Y= 372,282 LAT. 32.021307 LONG. 103.593774	X= 729,469 NAD 27 Y= 364,735 LAT. 32.006512 LONG. 103.593101									
X= 770,397 NAD83 Y= 372,319 LAT. 32.021432 LONG. 103.594240	X= 770,657 NAD83 Y= 364,792 LAT. 32.00737 LONG. 103.593566									
ELEVATION +3237 NAVD 88										
<table border="1"> <thead> <tr> <th>PROPOSED FIRST TAKE POINT</th> <th>PROPOSED LAST TAKE POINT</th> </tr> </thead> <tbody> <tr> <td>X= 729,414 NAD 27 Y= 372,054 LAT. 32.020729 LONG. 103.593117</td> <td>X= 729,466 NAD 27 Y= 364,885 LAT. 32.001024 LONG. 103.593101</td> </tr> <tr> <td>X= 770,602 NAD83 Y= 372,110 LAT. 32.020854 LONG. 103.593584</td> <td>X= 770,656 NAD83 Y= 364,842 LAT. 32.001150 LONG. 103.593966</td> </tr> </tbody> </table>	PROPOSED FIRST TAKE POINT	PROPOSED LAST TAKE POINT	X= 729,414 NAD 27 Y= 372,054 LAT. 32.020729 LONG. 103.593117	X= 729,466 NAD 27 Y= 364,885 LAT. 32.001024 LONG. 103.593101	X= 770,602 NAD83 Y= 372,110 LAT. 32.020854 LONG. 103.593584	X= 770,656 NAD83 Y= 364,842 LAT. 32.001150 LONG. 103.593966	<b>"SURVEYOR CERTIFICATION</b> I hereby certify that the well location shown on this plat was plotted from field notes of actual surveys made by me or under my supervision, and that the same is true and correct to the best of my belief. 12-13-2010 Date of Survey Signature and Seal of Professional Surveyor  23006 Certificate Number			
PROPOSED FIRST TAKE POINT	PROPOSED LAST TAKE POINT									
X= 729,414 NAD 27 Y= 372,054 LAT. 32.020729 LONG. 103.593117	X= 729,466 NAD 27 Y= 364,885 LAT. 32.001024 LONG. 103.593101									
X= 770,602 NAD83 Y= 372,110 LAT. 32.020854 LONG. 103.593584	X= 770,656 NAD83 Y= 364,842 LAT. 32.001150 LONG. 103.593966									
<b>CORNER COORDINATES TABLE (NAD 27)</b> A - Y=372382.09, X=729197.59 B - Y=372390.91, X=730519.68 C - Y=364563.17, X=730579.96 D - Y=364553.99, X=729259.12										

# Needmore Tank Wolfcamp Discovery Well Logs

SD EA 29 FEDERAL CO  
012H  
30025432710000  
3,249

## SD EA 29 P8 12H Pilot API: 30-025-43271



Top perf: 12,703' TVD  
12,935' MD

