

**BEFORE THE OIL CONSERVATION DIVISION  
EXAMINER HEARING APRIL 4, 2019**

**CASE No. 20365 & 20366**

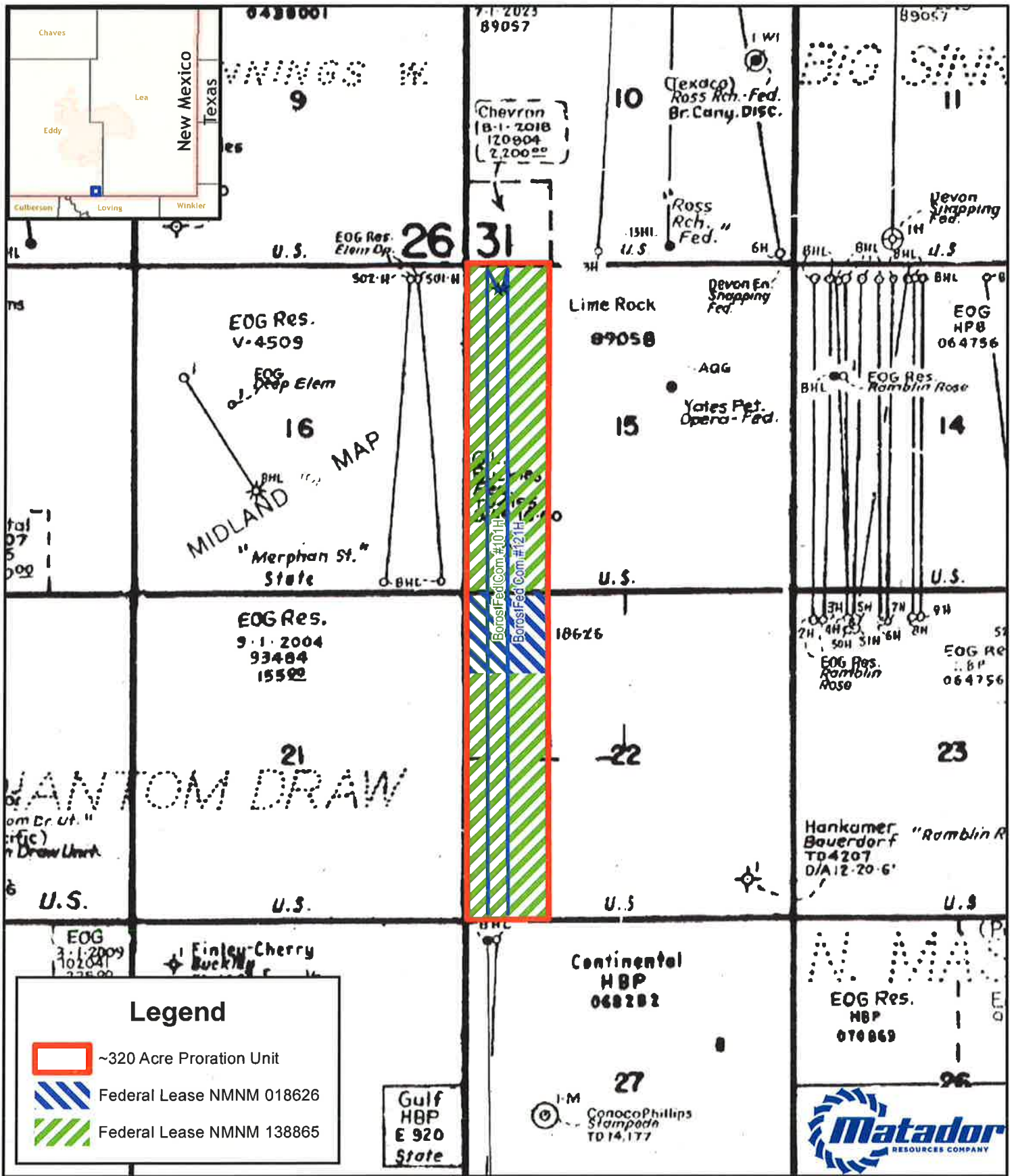
*BOROS FED COM 101H & 121H  
BOROS FED COM 201H, 202H, 221H, & 222H*

**EDDY COUNTY, NEW MEXICO**





15/22-26S-31E



**QIS Standard Map Disclaimer:**  
This cartographic product is for informational purposes and may not have been prepared for, or be suitable for legal, engineering, or surveying purposes. Users of this information should review or consult the primary data and information sources to ascertain the stability of the information.

**1:30,000**

**1 inch = 2,500 feet**

**BEFORE THE OIL CONSERVATION DIVISION**

Santa Fe, New Mexico

**Exhibit No. 1**

Submitted by: **MRC PERMIAN CO.**

Hearing Date: April 4, 2019

Case Nos. 20365 &amp; 20366







District I  
1625 N. French Dr., Hobbs, NM 88240  
Phone: (575) 393-6161 Fax: (575) 393-0720  
District II  
811 S. First St., Artesia, NM 88210  
Phone: (575) 748-1283 Fax: (575) 748-9720  
District III  
1000 Rio Brazos Road, Aztec, NM 87410  
Phone: (505) 334-6178 Fax: (505) 334-6170  
District IV  
1220 S. St. Francis Dr., Santa Fe, NM 87505  
Phone: (505) 476-3460 Fax: (505) 476-3462

State of New Mexico  
Energy, Minerals & Natural Resources  
Department  
OIL CONSERVATION DIVISION  
1220 South St. Francis Dr.  
Santa Fe, NM 87505

FORM C-102  
Revised August 1, 2011  
Submit one copy to appropriate  
District Office  
☐ AMENDED REPORT

WELL LOCATION AND ACREAGE DEDICATION PLAT

<sup>1</sup> API Number		<sup>2</sup> Pool Code 97860		<sup>3</sup> Pool Name JENNINGS BONE SPRING WEST	
<sup>4</sup> Property Code		<sup>5</sup> Property Name BOROS FED COM			<sup>6</sup> Well Number 101H
<sup>7</sup> GRID No.		<sup>8</sup> Operator Name MATADOR PRODUCTION COMPANY			<sup>9</sup> Elevation 3230'

<sup>10</sup>Surface Location

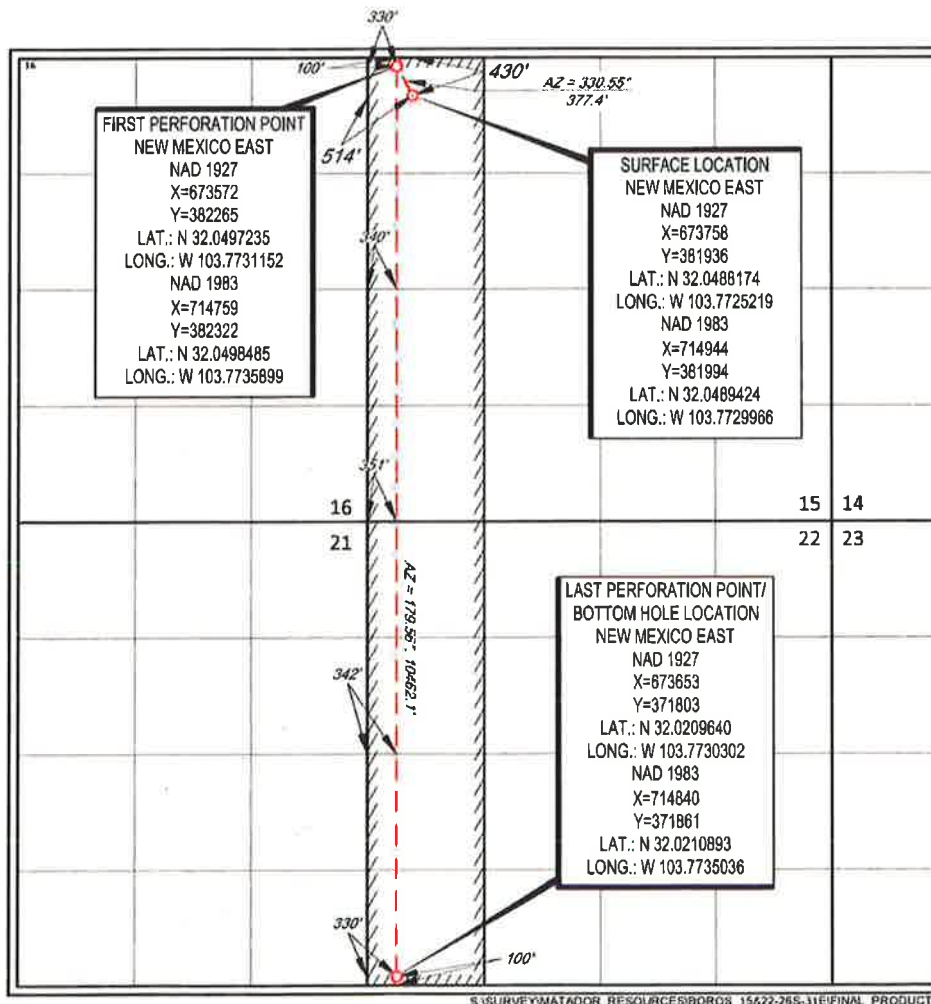
UL or lot no.	Section	Township	Range	Lot Idn	Feet from the	North/South line	Feet from the	East/West line	County
D	15	26-S	31-E	-	430'	NORTH	514'	WEST	EDDY

<sup>11</sup>Bottom Hole Location If Different From Surface

UL or lot no.	Section	Township	Range	Lot Idn	Feet from the	North/South line	Feet from the	East/West line	County
M	22	26-S	31-E	-	100'	SOUTH	330'	WEST	EDDY

<sup>12</sup> Dedicated Acres 320	<sup>13</sup> Joint or Infill	<sup>14</sup> Consolidation Code	<sup>15</sup> Order No.
--------------------------------------	-------------------------------	----------------------------------	-------------------------

No allowable will be assigned to this completion until all interests have been consolidated or a non-standard unit has been approved by the division.



<sup>17</sup> OPERATOR CERTIFICATION	
I hereby certify that the information contained herein is true and complete to the best of my knowledge and belief, and that this organization either owns a working interest or undivided mineral interest in the land including the proposed bottom hole location or has a right to drill this well at this location pursuant to a contract with an owner of such a mineral or working interest, or to a voluntary pooling agreement or a compulsory pooling order heretofore entered by the division.	
<i>Cassie Hahn</i>	3/28/2019
Signature	Date
Cassie Hahn	
Printed Name	
chahn@matadorresources.com	
E-mail Address	
<sup>18</sup> SURVEYOR CERTIFICATION	
I hereby certify that the well location shown on this plat was plotted from field notes of actual surveys made by me or under my supervision, and that the same is true to the best of my belief.	
02/18/2019	
Date of Survey	
Signature and Seal of Professional Surveyor	
MICHAEL B. BROWN	
18329	
PROFESSIONAL SURVEYOR	
Certificate Number	

BEFORE THE OIL CONSERVATION DIVISION

Santa Fe, New Mexico

Exhibit No. 3

Submitted by: MRC PERMIAN CO.

Hearing Date: April 4, 2019

Case Nos. 20365 & 20366



District I  
1625 N French Dr., Hobbs, NM 88240  
Phone: (575) 393-6161 Fax: (575) 393-0720  
District II  
811 S First St., Artesia, NM 88210  
Phone: (575) 748-1283 Fax: (575) 748-9720  
District III  
1000 Rio Brazos Road, Aztec, NM 87410  
Phone: (505) 334-6178 Fax: (505) 334-6170  
District IV  
1220 S St Francis Dr., Santa Fe, NM 87505  
Phone: (505) 476-3460 Fax: (505) 476-3462

State of New Mexico  
Energy, Minerals & Natural Resources  
Department  
OIL CONSERVATION DIVISION  
1220 South St. Francis Dr.  
Santa Fe, NM 87505

FORM C-102  
Revised August 1, 2011  
Submit one copy to appropriate  
District Office

☐ AMENDED REPORT

WELL LOCATION AND ACREAGE DEDICATION PLAT

<sup>1</sup> API Number	<sup>2</sup> Pool Code 97860	<sup>3</sup> Pool Name JENNINGS BONE SPRING WEST
<sup>4</sup> Property Code	<sup>5</sup> Property Name BOROS FED COM	<sup>6</sup> Well Number 121H
<sup>7</sup> OGRID No.	<sup>8</sup> Operator Name MATADOR PRODUCTION COMPANY	<sup>9</sup> Elevation 3231'

<sup>10</sup>Surface Location

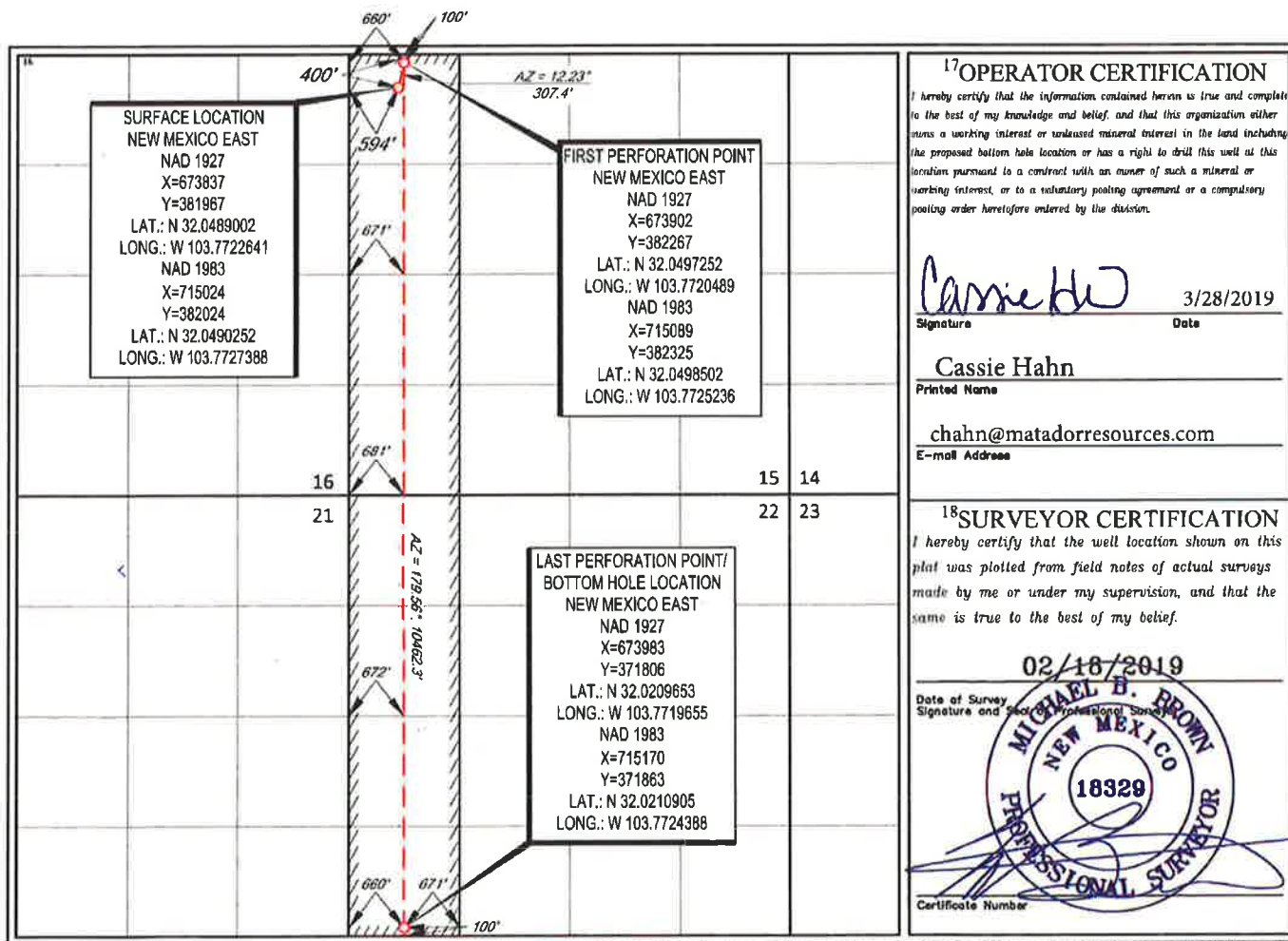
UL or lot no.	Section	Township	Range	Lot Idn	Feet from the	North/South line	Feet from the	East/West line	County
D	15	26-S	31-E	-	400'	NORTH	594'	WEST	EDDY

<sup>11</sup>Bottom Hole Location If Different From Surface

UL or lot no.	Section	Township	Range	Lot Idn	Feet from the	North/South line	Feet from the	East/West line	County
M	22	26-S	31-E	-	100'	SOUTH	660'	WEST	EDDY

<sup>12</sup> Dedicated Acres 320	<sup>13</sup> Joint or Infill	<sup>14</sup> Consolidation Code	<sup>15</sup> Order No.
--------------------------------------	-------------------------------	----------------------------------	-------------------------

No allowable will be assigned to this completion until all interests have been consolidated or a non-standard unit has been approved by the division.





Case Nos. 20365 &amp; 20366



District I  
1625 N French Dr., Hobbs, NM 88240  
Phone: (575) 393-6161 Fax: (575) 393-0720  
District II  
811 S First St., Artesia, NM 88210  
Phone: (575) 748-1283 Fax: (575) 748-9720  
District III  
1000 Rio Brazos Road, Aztec, NM 87410  
Phone: (505) 334-6178 Fax: (505) 334-6170  
District IV  
1220 S St. Francis Dr., Santa Fe, NM 87505  
Phone: (505) 476-3460 Fax: (505) 476-3462

State of New Mexico  
Energy, Minerals & Natural Resources  
Department  
OIL CONSERVATION DIVISION  
1220 South St. Francis Dr.  
Santa Fe, NM 87505

FORM C-102  
Revised August 1, 2011  
Submit one copy to appropriate  
District Office

☐ AMENDED REPORT

WELL LOCATION AND ACREAGE DEDICATION PLAT

<sup>1</sup> API Number		<sup>2</sup> Pool Code 98220	<sup>3</sup> Pool Name PURPLE SAGE WOLFCAMP
<sup>4</sup> Property Code	<sup>5</sup> Property Name BOROS FED COM		<sup>6</sup> Well Number 202H
<sup>7</sup> OGRID No.	<sup>8</sup> Operator Name MATADOR PRODUCTION COMPANY		<sup>9</sup> Elevation 3226'

<sup>10</sup>Surface Location

UL or lot no.	Section	Township	Range	Lot Idn	Feet from the	North/South line	Feet from the	East/West line	County
C	15	26-S	31-E	-	430'	NORTH	1820'	WEST	EDDY

<sup>11</sup>Bottom Hole Location If Different From Surface

UL or lot no.	Section	Township	Range	Lot Idn	Feet from the	North/South line	Feet from the	East/West line	County
N	22	26-S	31-E	-	240'	SOUTH	1651'	WEST	EDDY

<sup>12</sup> Dedicated Acres 640	<sup>13</sup> Joint or Infill	<sup>14</sup> Consolidation Code	<sup>15</sup> Order No.
--------------------------------------	-------------------------------	----------------------------------	-------------------------

No allowable will be assigned to this completion until all interests have been consolidated or a non-standard unit has been approved by the division.

<p><sup>16</sup>FIRST PERFORATION POINT NEW MEXICO EAST NAD 1927 X=674894 Y=382044 LAT.: N 32.0480879 LONG.: W 103.7688519 NAD 1983 X=716081 Y=382102 LAT.: N 32.0492229 LONG.: W 103.7693265</p>		<p><sup>17</sup>OPERATOR CERTIFICATION I hereby certify that the information contained herein is true and complete to the best of my knowledge and belief, and that this organization either owns a working interest or undivided mineral interest in the land including the proposed bottom hole location or has a right to drill this well at this location pursuant to a contract with an owner of such a mineral or working interest, or to a voluntary pooling agreement or a compulsory pooling order heretofore entered by the division.</p> <p><i>Cassie Hahn</i> 3/28/2019 Signature Date Cassie Hahn Printed Name chahn@matadorresources.com E-mail Address</p>	
<p><sup>18</sup>SURVEYOR CERTIFICATION I hereby certify that the well location shown on this plat was plotted from field notes of actual surveys made by me or under my supervision, and that the same is true to the best of my belief.</p> <p>02/18/2019 Date of Survey Signature and Seal of Professional Surveyor ANGEL M. BAEZA PROFESSIONAL SURVEYOR Certificate Number</p>		<p><sup>19</sup>BOTTOM HOLE LOCATION NEW MEXICO EAST NAD 1927 X=674972 Y=371952 LAT.: N 32.0213538 LONG.: W 103.7687724 NAD 1983 X=716158 Y=372009 LAT.: N 32.0214790 LONG.: W 103.7692456</p>	



District I  
1625 N. French Dr., Hobbs, NM 88240  
Phone: (575) 393-6161 Fax: (575) 393-0720  
District II  
811 S. First St., Artesia, NM 88210  
Phone: (575) 748-1283 Fax: (575) 748-9720  
District III  
1000 Rio Brazos Road, Aztec, NM 87410  
Phone: (505) 334-6178 Fax: (505) 334-6170  
District IV  
1220 S. St. Francis Dr., Santa Fe, NM 87505  
Phone: (505) 476-3460 Fax: (505) 476-3462

State of New Mexico  
Energy, Minerals & Natural Resources  
Department  
OIL CONSERVATION DIVISION  
1220 South St. Francis Dr.  
Santa Fe, NM 87505

FORM C-102  
Revised August 1, 2011  
Submit one copy to appropriate  
District Office

☐ AMENDED REPORT

WELL LOCATION AND ACREAGE DEDICATION PLAT

<sup>1</sup> API Number	<sup>2</sup> Pool Code 98220	<sup>3</sup> Pool Name PURPLE SAGE WOLFCAMP
<sup>4</sup> Property Code	<sup>5</sup> Property Name BOROS FED COM	<sup>6</sup> Well Number 221H
<sup>7</sup> OGRID No.	<sup>8</sup> Operator Name MATADOR PRODUCTION COMPANY	<sup>9</sup> Elevation 3231'

<sup>10</sup>Surface Location

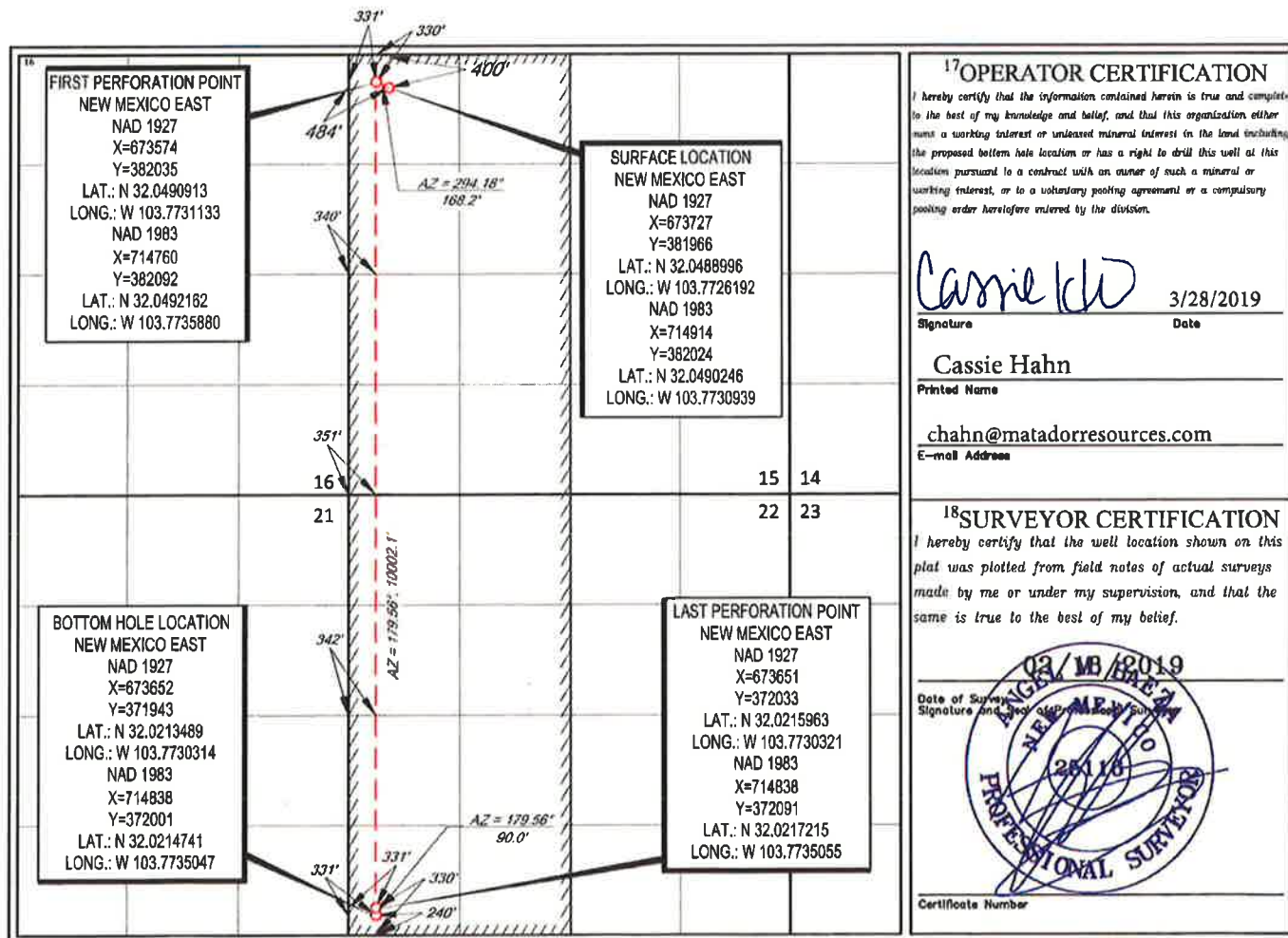
UL or lot no.	Section	Township	Range	Lot Idn	Feet from the	North/South line	Feet from the	East/West line	County
D	15	26-S	31-E	-	400'	NORTH	484'	WEST	EDDY

<sup>11</sup>Bottom Hole Location If Different From Surface

UL or lot no.	Section	Township	Range	Lot Idn	Feet from the	North/South line	Feet from the	East/West line	County
M	22	26-S	31-E	-	240'	SOUTH	331'	WEST	EDDY

<sup>12</sup> Dedicated Acres 640	<sup>13</sup> Joint or Infill	<sup>14</sup> Consolidation Code	<sup>15</sup> Order No.
--------------------------------------	-------------------------------	----------------------------------	-------------------------

No allowable will be assigned to this completion until all interests have been consolidated or a non-standard unit has been approved by the division.



<sup>17</sup>OPERATOR CERTIFICATION

I hereby certify that the information contained herein is true and complete to the best of my knowledge and belief, and that this organization either owns a working interest or undivided mineral interest in the land including the proposed bottom hole location or has a right to drill this well at this location pursuant to a contract with an owner of such a mineral or working interest, or to a voluntary pooling agreement or a compulsory pooling order heretofore entered by the division.

Cassie Hahn  
Signature Date 3/28/2019

Cassie Hahn  
Printed Name

chahn@matadorresources.com  
E-mail Address

<sup>18</sup>SURVEYOR CERTIFICATION

I hereby certify that the well location shown on this plat was plotted from field notes of actual surveys made by me or under my supervision, and that the same is true to the best of my belief.

ANGIE M. HAHN  
Date of Survey 03/28/2019  
Signature and Seal of Professional Surveyor  
28116  
PROFESSIONAL SURVEYOR

Certificate Number



District I  
1625 N French Dr., Hobbs, NM 88240  
Phone: (575) 393-6161 Fax: (575) 393-0720  
District II  
811 S First St., Artesia, NM 88210  
Phone: (575) 748-1283 Fax: (575) 748-9720  
District III  
1000 Rio Brazos Road, Aztec, NM 87410  
Phone: (505) 334-6178 Fax: (505) 334-6170  
District IV  
1220 S St. Francis Dr., Santa Fe, NM 87505  
Phone: (505) 476-3460 Fax: (505) 476-3462

State of New Mexico  
Energy, Minerals & Natural Resources  
Department  
OIL CONSERVATION DIVISION  
1220 South St. Francis Dr.  
Santa Fe, NM 87505

FORM C-102

Revised August 1, 2011

Submit one copy to appropriate

District Office

☐ AMENDED REPORT

WELL LOCATION AND ACREAGE DEDICATION PLAT

<sup>1</sup> API Number	<sup>2</sup> Pool Code 98220	<sup>3</sup> Pool Name PURPLE SAGE WOLFCAMP
<sup>4</sup> Property Code	<sup>5</sup> Property Name BOROS FED COM	<sup>6</sup> Well Number 222H
<sup>7</sup> OGRIID No.	<sup>8</sup> Operator Name MATADOR PRODUCTION COMPANY	<sup>9</sup> Elevation 3226'

<sup>10</sup>Surface Location

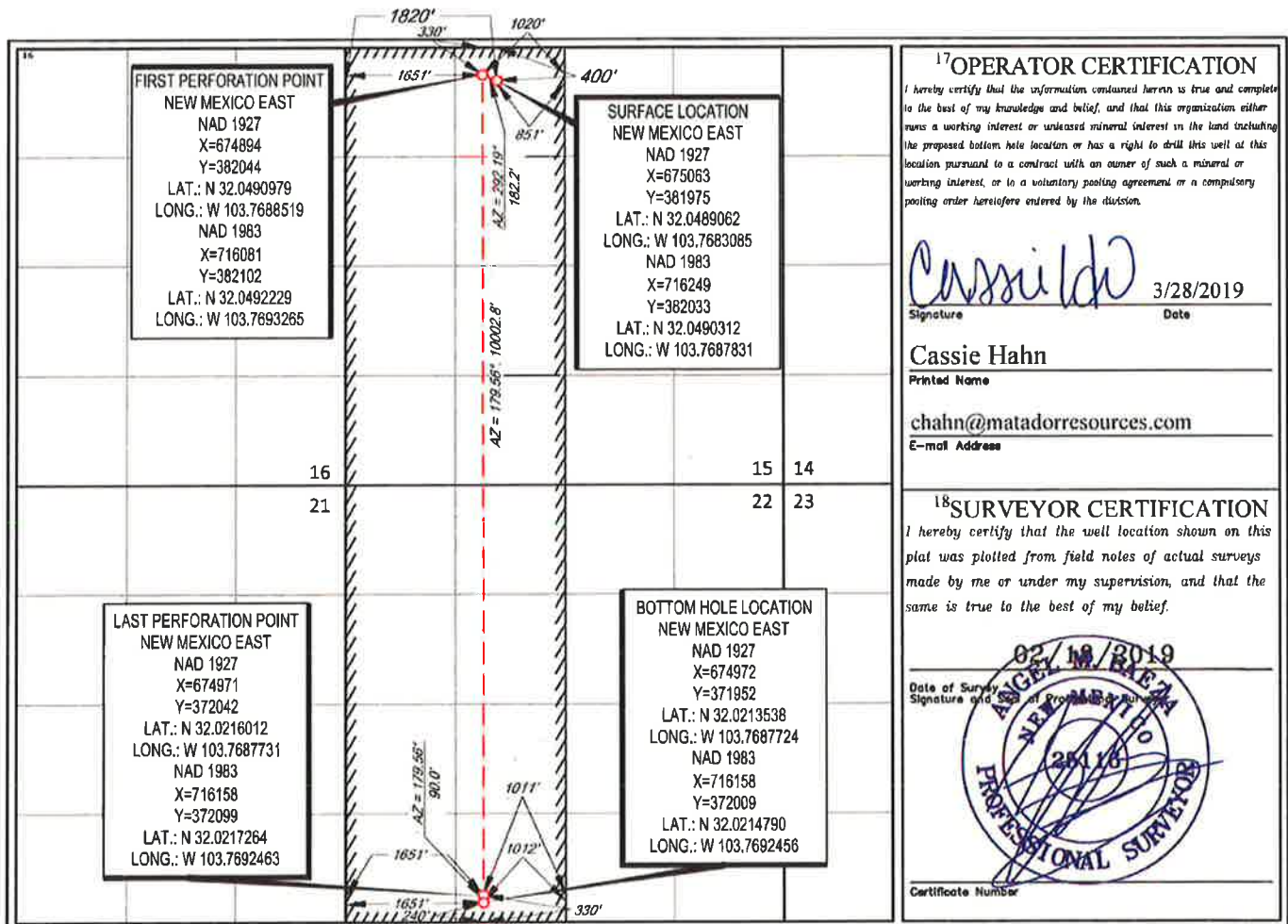
UL or lot no. C	Section 15	Township 26-S	Range 31-E	Lot Idn -	Feet from the 400'	North/South line NORTH	Feet from the 1820'	East/West line WEST	County EDDY
--------------------	---------------	------------------	---------------	--------------	-----------------------	---------------------------	------------------------	------------------------	----------------

<sup>11</sup>Bottom Hole Location If Different From Surface

UL or lot no. N	Section 22	Township 26-S	Range 31-E	Lot Idn -	Feet from the 240'	North/South line SOUTH	Feet from the 1651'	East/West line WEST	County EDDY
--------------------	---------------	------------------	---------------	--------------	-----------------------	---------------------------	------------------------	------------------------	----------------

<sup>12</sup> Dedicated Acres 640	<sup>13</sup> Joint or Infill	<sup>14</sup> Consolidation Code	<sup>15</sup> Order No.
--------------------------------------	-------------------------------	----------------------------------	-------------------------

No allowable will be assigned to this completion until all interests have been consolidated or a non-standard unit has been approved by the division.





## Summary of Interests

<b>MRC Permian Company Working Interest</b>			<b>87.5%</b>
<b>Voluntary Joinder</b>			<b>0.00%</b>
<b>Compulsory Pool Interest Total:</b>			<b>12.5%</b>
<b>Interest Owner:</b>	<b>Description:</b>	<b>Interest:</b>	
Occidental Permian Limited Partnership	Uncommitted Working Interest Owner	12.5%	



Boros Fed Com #101H, #121H



## Summary of Interests

<b>MRC Permian Company Working Interest</b>			<b>93.75%</b>
<b>Voluntary Joinder</b>			<b>0.00%</b>
<b>Compulsory Pool Interest Total:</b>			<b>6.25%</b>
<b>Interest Owner:</b>	<b>Description:</b>	<b>Interest:</b>	
Occidental Permian Limited Partnership	Uncommitted Working Interest Owner	6.25%	





## **ORRI TO BE POOLED**

1. Gates Properties, Ltd.
2. John W. Gates, LLC
3. Halloran Family Joint Venture
4. Chisos Minerals, LLC



# MRC Permian Company

One Lincoln Centre • 5400 LBJ Freeway • Suite 1500 • Dallas, Texas 75240

Voice 972.371.5440 • Fax 214.866.4883

[chahn@matadorresources.com](mailto:chahn@matadorresources.com)

**Cassie Hahn  
Landman**

November 21, 2018

VIA CERTIFIED RETURN RECEIPT MAIL

Occidental Permian LP  
5 E. Greenway Plaza #110  
Houston, TX 77046

Re: Boros Fed Com #101H, #102H, #103H, #104H, #121H, #122H, #123H, #124H, #201H,  
#202H, #203H, #204H, #221H, #222H, #223H, #224H (the "Wells")  
Participation Proposal  
Sections 15 & 22, Township 26 South, Range 31 East  
Eddy County, New Mexico

Dear Sir/Madam:

MRC Permian Company ("MRC") proposes the drilling of the following Matador Production Company's Wells, located in Sections 15 and 22, Township 26 South, Range 31 East, Eddy County, New Mexico. Accordingly, enclosed are the AFE's dated on October 2018 and November 2018 for the following:

In connection with the above, please note the following:

- **Boros Fed Com #101H** to be drilled from SHL in the SW/4SW/4 of Section 10-26S-31E to a BHL in the SW/4SW/4 of Section 22-26S-31E. The proposed well will be drilled to an approximate TVD of 8475' subsurface in the Avalon Formation. The proposed well will have a MD of approximately 18642'.
- **Boros Fed Com #102H** to be drilled from SHL in the SE/4SW/4 of Section 10-26S-31E to a BHL in the SE/4SW/4 of Section 22-26S-31E. The proposed well will be drilled to an approximate TVD of 8475' subsurface in the Avalon Formation. The proposed well will have a MD of approximately 18642'.
- **Boros Fed Com #103H** to be drilled from SHL in the SW/4SE/4 of Section 10-26S-31E to a BHL in the SW/4SE/4 of Section 22-26S-31E. The proposed well will be drilled to an approximate TVD of 8475' subsurface in the Avalon Formation. The proposed well will have a MD of approximately 18642'.
- **Boros Fed Com #104H** to be drilled from SHL in the SE/4SE/4 of Section 10-26S-31E to a BHL in the SE/4SE/4 of Section 22-26S-31E. The proposed well will be drilled to an

**BEFORE THE OIL CONSERVATION DIVISION**

Santa Fe, New Mexico

**Exhibit No. 5A**

Submitted by: **MATADOR RESOURCES**

Hearing Date: April 4, 2019

Case Nos. 20365 & 20366



approximate TVD of 8475' subsurface in the Avalon Formation. The proposed well will have a MD of approximately 18642'.

- **Boros Fed Com #121H** to be drilled from SHL in the SW/4SW/4 of Section 10-26S-31E to a BHL in the SW/4SW/4 of Section 22-26S-31E. The proposed well will be drilled to an approximate TVD of 10,075' subsurface in the Bone Spring Formation. The proposed well will have a MD of approximately 20,242'.
- **Boros Fed Com #122H** to be drilled from SHL in the SE/4SW/4 of Section 10-26S-31E to a BHL in the SE/4SW/4 of Section 22-26S-31E. The proposed well will be drilled to an approximate TVD of 10,075' subsurface in the Bone Spring Formation. The proposed well will have a MD of approximately 20,242'.
- **Boros Fed Com #123H** to be drilled from SHL in the SW/4SE/4 of Section 10-26S-31E to a BHL in the SW/4SE/4 of Section 22-26S-31E. The proposed well will be drilled to an approximate TVD of 10,075' subsurface in the Bone Spring Formation. The proposed well will have a MD of approximately 20,242'.
- **Boros Fed Com #124H** to be drilled from SHL in the SE/4SE/4 of Section 10-26S-31E to a BHL in the SE/4SE/4 of Section 22-26S-31E. The proposed well will be drilled to an approximate TVD of 10,075' subsurface in the Bone Spring Formation. The proposed well will have a MD of approximately 20,242'.
- **Boros Fed Com #201H** to be drilled from a SHL in the SW/4SW/4 of Section 10-26S-31E to a BHL in the SW/4SW/4 of Section 22-26S-31E. The proposed well will be drilled to an approximate TVD of 11,480' subsurface in the Wolfcamp Formation. The proposed well will have a MD of approximately 21,547'.
- **Boros Fed Com #202H** to be drilled from SHL in the SE/4SW/4 of Section 10-26S-31E to a BHL in the SE/4SW/4 of Section 22-26S-31E. The proposed well will be drilled to an approximate TVD of 11,480' subsurface in the Wolfcamp Formation. The proposed well will have a MD of approximately 21,547'.
- **Boros Fed Com #203H** to be drilled from SHL in the SW/4SE/4 of Section 10-26S-31E to a BHL in the SW/4SE/4 of Section 22-26S-31E. The proposed well will be drilled to an approximate TVD of 11,480' subsurface in the Wolfcamp Formation. The proposed well will have a MD of approximately 21,547'.
- **Boros Fed Com #204H** to be drilled from SHL in the SE/4SE/4 of Section 10-26S-31E to a BHL in the SE/4SE/4 of Section 22-26S-31E. The proposed well will be drilled to an approximate TVD of 11,480' subsurface in the Wolfcamp Formation. The proposed well will have a MD of approximately 21,547'.
- **Boros Fed Com #221H** to be drilled from a SHL in the SW/4SW/4 of Section 10-26S-31E to a BHL in the SW/4SW/4 of Section 22-26S-31E. The proposed well will be drilled to an approximate TVD of 12,600' subsurface in the Wolfcamp Formation. The proposed well will have a MD of approximately 22,667'.
- **Boros Fed Com #222H** to be drilled from SHL in the SE/4SW/4 of Section 10-26S-31E to a BHL in the SE/4SW/4 of Section 22-26S-31E. The proposed well will be drilled to an approximate TVD of 12,600' subsurface in the Wolfcamp Formation. The proposed well will have a MD of approximately 22,667'.
- **Boros Fed Com #223H** to be drilled from SHL in the SW/4SE/4 of Section 10-26S-31E to a BHL in the SW/4SE/4 of Section 22-26S-31E. The proposed well will be drilled to



an approximate TVD of 12,600' subsurface in the Wolfcamp Formation. The proposed well will have a MD of approximately 22,667'.

- **Boros Fed Com #224H** to be drilled from SHL in the SE/4SE/4 of Section 10-26S-31E to a BHL in the SE/4SE/4 of Section 22-26S-31E. The proposed well will be drilled to an approximate TVD of 12,600' subsurface in the Wolfcamp Formation. The proposed well will have a MD of approximately 22,667'.

MRC reserves the right to modify the locations and drilling plans described above in order to address topography, cultural or environmental concerns, among other reasons. MRC will advise you of any such modifications.

MRC requests that you indicate your election to participate in the drilling and completion of the Well in the space provided below, sign and return one (1) copy of this letter to the undersigned. MRC is proposing to drill the Well under the terms of the modified 1989 AAPL form of Operating Agreement which is enclosed for your review and approval. The enclosed Operating Agreement dated October 31, 2018, by and between Matador Production Company, as operator and MRC Permian Company et al as Non-Operators covers all of Section 15 and Section 22, Township 22 South, Range 31 East, Eddy County, New Mexico and has the following general provisions:

- 100/300/300 Non-consenting penalty
- \$8,000/\$800 Drilling and Producing rate
- Matador Production Company named as Operator

If your election is to participate in the drilling and completion of the Well, please sign and return a copy of the enclosed AFE within thirty (30) days of receipt of this notice. Please be aware that the enclosed AFE is only an estimate of costs to be incurred and by electing to participate in the Well, each working interest owner shall be responsible for its proportionate share of all costs incurred.

Thank you for your consideration of this proposal. Please contact me if you have any questions.

Sincerely,

MRC PERMIAN COMPANY

  
Cassie Hahn

**Occidental Permian LP hereby elects to:**

\_\_\_\_\_ Participate in the **Boros Fed Com #101H**

\_\_\_\_\_ Not to participate in the **Boros Fed Com #101H**

\_\_\_\_\_ Participate in the **Boros Fed Com #102H**

\_\_\_\_\_ Not to participate in the **Boros Fed Com #102H**



☐ Participate in the **Boros Fed Com #103H**  
☐ Not to participate in the **Boros Fed Com #103H**

☐ Participate in the **Boros Fed Com #104H**  
☐ Not to participate in the **Boros Fed Com #104H**

☐ Participate in the **Boros Fed Com #104H**  
☐ Not to participate in the **Boros Fed Com #104H**

☐ Participate in the **Boros Fed Com #104H**  
☐ Not to participate in the **Boros Fed Com #104H**

☐ Participate in the **Boros Fed Com #111H**  
☐ Not to participate in the **Boros Fed Com #111H**

☐ Participate in the **Boros Fed Com #112H**  
☐ Not to participate in the **Boros Fed Com #112H**

☐ Participate in the **Boros Fed Com #113H**  
☐ Not to participate in the **Boros Fed Com #113H**

☐ Participate in the **Boros Fed Com #114H**  
☐ Not to participate in the **Boros Fed Com #114H**

☐ Participate in the **Boros Fed Com #121H**  
☐ Not to participate in the **Boros Fed Com #121H**

☐ Participate in the **Boros Fed Com #122H**  
☐ Not to participate in the **Boros Fed Com #122H**



☐ Participate in the **Boros Fed Com #123H**  
☐ Not to participate in the **Boros Fed Com #123H**

☐ Participate in the **Boros Fed Com #124H**  
☐ Not to participate in the **Boros Fed Com #124H**

☐ Participate in the **Boros Fed Com #131H**  
☐ Not to participate in the **Boros Fed Com #131H**

☐ Participate in the **Boros Fed Com #132H**  
☐ Not to participate in the **Boros Fed Com #132H**

☐ Participate in the **Boros Fed Com #133H**  
☐ Not to participate in the **Boros Fed Com #134H**

☐ Participate in the **Boros Fed Com #134H**  
☐ Not to participate in the **Boros Fed Com #134H**

☐ Participate in the **Boros Fed Com #201H**  
☐ Not to participate in the **Boros Fed Com #201H**

☐ Participate in the **Boros Fed Com #202H**  
☐ Not to participate in the **Boros Fed Com #202H**

☐ Participate in the **Boros Fed Com #203H**  
☐ Not to participate in the **Boros Fed Com #203H**

☐ Participate in the **Boros Fed Com #204H**  
☐ Not to participate in the **Boros Fed Com #204H**

☐ Participate in the **Boros Fed Com #221H**



\_\_\_\_\_ Not to participate in the **Boros Fed Com #221H**

\_\_\_\_\_ Participate in the **Boros Fed Com #222H**

\_\_\_\_\_ Not to participate in the **Boros Fed Com #222H**

\_\_\_\_\_ Participate in the **Boros Fed Com #223H**

\_\_\_\_\_ Not to participate in the **Boros Fed Com #223H**

\_\_\_\_\_ Participate in the **Boros Fed Com #224H**

\_\_\_\_\_ Not to participate in the **Boros Fed Com #224H**

Occidental Permian LP

By: \_\_\_\_\_

Title: \_\_\_\_\_

Date: \_\_\_\_\_

Contact Number: \_\_\_\_\_



**MATADOR PRODUCTION COMPANY**  
 ONE LINCOLN CENTRE • 6400 LBJ FREEWAY • SUITE 1500 • DALLAS, TEXAS 75240  
 Phone (972) 371-5200 • Fax (972) 371-5201

**ESTIMATE OF COSTS AND AUTHORIZATION FOR EXPENDITURE**

DATE:	October 18, 2018	AFE NO.:	500000 627.01 001
WELL NAME:	Boros Fed Com #101H	FIELD:	
LOCATION:	Section 15&22-26S-31E	MD/TVD:	18642/8475'
COUNTY/STATE:	Eddy, NM	LATERAL LENGTH:	about 8700'
MRC WI:			
GEOLOGIC TARGET:	Avalon		
REMARKS:	Drill and complete a horizontal Avalon target with 46 stages		

INTANGIBLE COSTS	DRILLING COSTS	COMPLETION COSTS	PRODUCTION COSTS	FACILITY COSTS	TOTAL COSTS
Land / Legal / Regulatory	\$ 61,500				\$ 61,500
Location, Surveys & Damages	103,000	13,000	10,000	5,000	131,000
Drilling	466,000				653,000
Cementing & Float Equip	218,000				218,000
Logging / Formation Evaluation		6,500			6,500
Mud Logging	34,000				34,000
Mud Circulation System	59,000				59,000
Mud / Chemicals	111,000	87,000			178,000
Mud / Wastewater Disposal	195,000				195,000
Freight / Transportation	14,000	43,500			61,500
Rig Supervision / Engineering	168,000	120,000	7,200	5,400	307,200
Drill Bits	113,000				113,000
Fuel & Power	156,000				156,000
Water	80,000	402,500	188,000		672,500
Drig & Completion Overhead	15,000	42,000			57,000
Plugging & Abandonment					
Directional Drilling, Surveys	302,000				302,000
Completion Unit, Swab, CTU		144,000	20,000		164,000
Perforating, Wireline, Slickline		294,000			294,000
High Pressure Pump Truck		175,700			175,700
Stimulation		4,186,000			4,186,000
Stimulation Flowback & Disp		208,000			208,000
Insurance	33,556				33,556
Labor	165,500	102,000	30,000	1,000	298,500
Rental - Surface Equipment	90,000	490,500	60,000	3,000	652,500
Rental - Downhole Equipment	130,000	85,000			215,000
Rental - Living Quarters	62,650	56,266	5,000	2,000	127,710
Contingency	243,660	225,856			469,516
Operations Center	32,350				32,350
<b>TOTAL INTANGIBLES &gt;</b>	<b>3,289,416</b>	<b>6,688,216</b>	<b>313,200</b>	<b>16,400</b>	<b>10,287,232</b>
TANGIBLE COSTS	DRILLING COSTS	COMPLETION COSTS	PRODUCTION COSTS	FACILITY COSTS	TOTAL COSTS
Surface Casing	\$ 53,000				\$ 53,000
Intermediate Casing	146,300				146,300
Drilling Liner					
Production Casing	583,581				583,581
Production Liner					
Tubing			52,000		52,000
Wellhead	65,000		40,000		105,000
Packers, Liner Hangers		105,600	10,000		118,600
Tanks				16,000	16,000
Production Vessels			66,000	13,025	73,025
Flow Lines			50,000		50,000
Rod string					
Artificial Lift Equipment			270,000		270,000
Compressor				2,000	2,000
Installation Costs				24,000	24,000
Surface Pumps			5,000		5,000
Non-controllable Surface					
Non-controllable Downhole					
Downhole Pumps					
Measurement & Meter Installation			12,500	5,500	18,000
Gas Conditioning / Dehydration					
Interconnecting Facility Piping				15,000	15,000
Gathering / Bulk Lines					
Valves, Dumps, Controllers			2,000	1,000	3,000
Tank / Facility Containment				2,000	2,000
Flare Stack			1,000		1,000
Electrical / Grounding			10,000	1,000	11,000
Communications / SCADA			5,000	5,000	10,000
Instrumentation / Safety					
<b>TOTAL TANGIBLES &gt;</b>	<b>841,881</b>	<b>105,600</b>	<b>521,500</b>	<b>67,025</b>	<b>1,555,006</b>
<b>TOTAL COSTS &gt;</b>	<b>4,131,297</b>	<b>6,776,816</b>	<b>834,700</b>	<b>103,425</b>	<b>11,846,238</b>

**PREPARED BY MATADOR PRODUCTION COMPANY:**

Drilling Engineer:	Blank Blum	Team Lead - WTX:NM	<u>WTE</u>
Completions Engineer:	Wally Wolf		
Production Engineer:	Ryan Peterson		

**MATADOR RESOURCES COMPANY APPROVAL:**

Executive VP - GEO/CFD	VP - Res Engineering	VP - Drilling
_____	_____	_____
Executive VP - Legal	Exec Dir - Exploration	
_____	_____	
President		
_____		

**NON OPERATING PARTNER APPROVAL:**

Company Name:	Working Interest (%):	Tax ID:
_____	_____	_____
Signed by:	Date:	
_____	_____	
Title:	Approval: Yes _____ No (mark one)	
_____		



**MATADOR PRODUCTION COMPANY**  
 ONE LINCOLN CENTRE • 6400 LBJ FREEWAY • SUITE 1500 • DALLAS, TEXAS 75240  
 Phone (972) 371-5200 • Fax (972) 371-5201

**ESTIMATE OF COSTS AND AUTHORIZATION FOR EXPENDITURE**

<b>DATE:</b>	October 18, 2018	<b>AFE NO.:</b>	500000 6.36.01.001
<b>WELL NAME:</b>	Borco Fed Com #12111	<b>FIELD:</b>	
<b>LOCATION:</b>	Section 15&22-26S-31E	<b>MD/TVD:</b>	20242' / 110075'
<b>COUNTY/STATE:</b>	Eddy, NM	<b>LATERAL LENGTH:</b>	about 9700'
<b>MRC Wt:</b>			
<b>GEOLOGIC TARGET:</b>	2nd Bone Spring		
<b>REMARKS:</b>	Drill and complete a horizontal 2nd Bone Spring target with 46 stages		

INTANGIBLE COSTS	DRILLING COSTS	COMPLETION COSTS	PRODUCTION COSTS	FACILITY COSTS	TOTAL COSTS
Land / Legal / Regulatory	\$ 61,500				\$ 61,500
Location, Surveys & Damages	103,000	13,000	10,000	5,000	131,000
Drilling	846,000				846,000
Cementing & Float Equip	118,000				118,000
Logging / Formation Evaluation		6,500			6,500
Mud Logging	36,000				36,000
Mud Circulation System	68,000				68,000
Mud & Chemicals	111,000	41,000			152,000
Mud / Wastewater Disposal	195,000				195,000
Freight / Transportation	18,000	20,500			38,500
Rig Supervision / Engineering	168,000	119,400	7,200	5,400	300,000
Drill Bits	113,000				113,000
Fuel & Power	156,000				156,000
Water	90,000	392,500	180,000		662,500
Orig & Completion Overhead	15,000	20,000			35,000
Plugging & Abandonment					
Directional Drilling, Surveys	302,000				302,000
Completion Unit, Swab, CTU		240,000	20,000		260,000
Perforating, Wireline, Stickleline		294,000			294,000
High Pressure Pump Truck		126,500			126,500
Stimulation		4,370,000			4,370,000
Stimulation Flowback & Disp		203,000			203,000
Insurance	36,436				36,436
Labor	165,700	90,000	30,000	1,000	286,700
Rental - Surface Equipment	99,000	441,500	60,000	3,000	603,500
Rental - Downhole Equipment	130,000	50,000			180,000
Rental - Living Quarters	62,800	51,500	4,000	2,000	119,300
Contingency	243,891	216,000			459,891
Operations Center	32,250				32,250
<b>TOTAL INTANGIBLES &gt;</b>	<b>3,292,526</b>	<b>6,746,220</b>	<b>313,200</b>	<b>16,400</b>	<b>10,368,346</b>
TANGIBLE COSTS	DRILLING COSTS	COMPLETION COSTS	PRODUCTION COSTS	FACILITY COSTS	TOTAL COSTS
Surface Casing	\$ 53,000				\$ 53,000
Intermediate Casing	149,300				149,300
Drilling Liner					
Production Casing	632,381				632,381
Production Liner					
Tubing			101,200		101,200
Wellhead	65,000		30,700		95,700
Packers, Liner Hangers		105,000	10,000		115,000
Tanks				16,000	16,000
Production Vessels			50,000	15,025	65,025
Flow Lines			50,000		50,000
Rod string					
Artificial Lift Equipment			30,000		30,000
Compressor				2,000	2,000
Installation Costs				24,000	24,000
Surface Pumps			5,000		5,000
Non-controllable Surface					
Non-controllable Downhole					
Downhole Pumps					
Measurement & Meter Installation			12,500	5,500	18,000
Gas Conditioning / Dehydration					
Interconnecting Facility Piping				15,000	15,000
Gathering / Bulk Lines					
Valves, Dumps, Controllers			2,000	1,000	3,000
Tank / Facility Containment				2,000	2,000
Flare Stack				2,000	2,000
Electrical / Grounding				500	500
Communications / SCADA				1,000	1,000
Instrumentation / Safety			5,000		5,000
<b>TOTAL TANGIBLES &gt;</b>	<b>890,661</b>	<b>105,000</b>	<b>335,700</b>	<b>67,025</b>	<b>1,418,406</b>
<b>TOTAL COSTS &gt;</b>	<b>4,183,207</b>	<b>6,851,220</b>	<b>648,900</b>	<b>103,425</b>	<b>11,786,752</b>

**PREPARED BY MATADOR PRODUCTION COMPANY:**

Drilling Engineer: _____	Team Lead - WTX/NM: <u>WTE</u>
Completion Engineer: _____	
Production Engineer: _____	

**MATADOR RESOURCES COMPANY APPROVAL:**

Executive VP, COO/CFO: _____	VP - Res Engineering: _____	VP - Drilling: _____
Executive VP, Legal: _____	Exec Dir - Exploration: _____	
President: _____		

**NON OPERATING PARTNER APPROVAL:**

Company Name: _____	Working Interest (%): _____	Tax ID: _____
Signed by: _____	Date: _____	
Title: _____	Approval: Yes _____ No (mark one)	



## Phone (972) 371-5200 • Fax (972) 371-5201

DATE:	October 18, 2018	AFE NO.:	
WELL NAME:	Boros Fed Com #201H	FIELD:	
LOCATION:	Section 15&22-26S-31E	MD/TVD:	21547/11480'
COUNTY/STATE:	Eddy, NM	LATERAL LENGTH:	about 9600'
MRC Wt:			
GEOLOGIC TARGET:	Wolfcamp		
REMARKS:	Drill, complete and equip a horizontal lower Wolfcamp target with 46 stages		

PREPARED BY MATADOR PRODUCTION COMPANY:

Drilling Engineer: Blake Hermes  
 Completions Engineer: Waylon Wolf  
 Production Engineer: John Remilio

Team Lead - WTX/NM WTE  
 WTE

Executive VP, COO/CFO	VP - Res Engineering	VP - Drilling
DEL	EMR	DG
Executive VP, Legal	Exec Dir - Exploration	
CA	NLF	
President		
MVM		

Company Name: \_\_\_\_\_ Working Interval (%): \_\_\_\_\_ Tax ID: \_\_\_\_\_

Signed by: \_\_\_\_\_ Date: \_\_\_\_\_

Title: \_\_\_\_\_ Approval: Yes \_\_\_\_\_ No (mark one)

The views in this RFI are not necessarily those and may not be shared by all members of the public or any specific group in the community of the County. Taking individual feedback under the RFI may be achieved in a number of ways and may be completed by providing the RFI, an online survey or by face-to-face consultation. The County will respond to your comments and will aim to address them in a timely manner. The County will also be seeking views from other stakeholders, including, but not limited to, regulatory bodies and other parts of the County who also have a role in supporting the proposed development. The County will also be seeking views from other stakeholders, including, but not limited to, regulatory bodies and other parts of the County who also have a role in supporting the proposed development. The County will also be seeking views from other stakeholders, including, but not limited to, regulatory bodies and other parts of the County who also have a role in supporting the proposed development.



ONE LINCOLN CENTRE • 6400 LBJ FREEWAY • SUITE 1500 • DALLAS, TEXAS 75240  
Phone (972) 371-5200 • Fax (972) 371-5201

DATE:	October 18 2018	AFE NO.:	500000 646 01 001
WELL NAME:	Boros Federal #202H	FIELD:	
LOCATION:	Section 15&22-26S-31E	MD/TVD:	21547/11480'
COUNTY/STATE:	Eddy, NM	LATERAL LENGTH:	about 9600'
MRC Wt:			
GEOLOGIC TARGET:	Wolfcamp		
REMARKS:	Drill, complete and equip a horizontal lower Wolfcamp target with 46 stages		

PREPARED BY MATADOR PRODUCTION COMPANY:

Team Lead - WTX/NM WTE  
WTE

VP - Drilling \_\_\_\_\_

Company Name: \_\_\_\_\_ Working Interest (%): \_\_\_\_\_ Tax ID: \_\_\_\_\_

Signed by: \_\_\_\_\_ Date: \_\_\_\_\_

Title: \_\_\_\_\_ Approval: Yes \_\_\_\_\_ No (mark one)

AFE - Version 3



**MATADOR PRODUCTION COMPANY**  
 ONE LINCOLN CENTRE • 5400 LBJ FREEWAY • SUITE 1500 • DALLAS, TEXAS 75240  
 Phone (972) 371-5200 • Fax (972) 371-5201

**ESTIMATE OF COSTS AND AUTHORIZATION FOR EXPENDITURE**

DATE:	October 18, 2018	AFE NO.:	
WELL NAME:	Boros Fed Com #221H	FIELD:	
LOCATION:	Section 15&22-26S-31E	MD/TVD:	22667'/12600'
COUNTY/STATE:	Eddy, NM	LATERAL LENGTH:	about 9600'
MRC WI:			
GEOLOGIC TARGET:	Wolfcamp		
REMARKS:	Drill, complete and equip a horizontal lower Wolfcamp target with 46 stages		

INTANGIBLE COSTS	DRILLING COSTS	COMPLETION COSTS	PRODUCTION COSTS	FACILITY COSTS	TOTAL COSTS
Land / Legal / Regulatory	\$ 85,500				\$ 85,500
Location, Surveys & Damages	100,500	13,000	10,000	5,000	128,500
Drilling	1,118,500				1,118,500
Cementing & Float Equip	232,000				232,000
Logging / Formation Evaluation		6,500			6,500
Mud Logging	45,600				45,600
Mud Circulation System	102,850				102,850
Mud & Chemicals	167,500	47,000			214,500
Mud / Wastewater Disposal	195,000				195,000
Freight / Transportation	30,000	40,500		\$-	70,500
Rig Supervision / Engineering	216,000	119,400	7,200	5,400	348,000
Drill Bha	131,200				131,200
Fuel & Power	208,000			\$-	208,000
Water	60,000	392,500			452,500
Drp & Completion Overhead	20,000	40,000			60,000
Plugging & Abandonment					
Directional Drilling, Surveys	395,000				395,000
Completion Unit, Swab, CTU		240,000	20,000		260,000
Perforating, Wireline, Stickline		294,000			294,000
High Pressure Pump Truck		126,500			126,500
Stimulation		4,830,000			4,830,000
Stimulation Flowback & Dump		208,000	160,000		368,000
Insurance	40,801				40,801
Labor	163,000	90,000	30,000		303,000
Rental - Surface Equipment	123,000	441,300	60,000	1,000	625,300
Rental - Downhole Equipment	105,000	50,000	3,000		158,000
Rental - Living Quarters	79,709	51,500	6,000	2,000	139,209
Contingency	367,778	216,020		\$-	583,798
Operations Center	37,625				37,625
<b>TOTAL INTANGIBLES &gt;</b>	<b>4,045,552</b>	<b>7,206,220</b>	<b>313,200</b>	<b>16,400</b>	<b>11,581,372</b>
TANGIBLE COSTS	DRILLING COSTS	COMPLETION COSTS	PRODUCTION COSTS	FACILITY COSTS	TOTAL COSTS
Surface Casing	\$ 53,000				\$ 53,000
Intermediate Casing	140,300				140,300
Drilling Liner	425,075				425,075
Production Casing	470,500				470,500
Production Liner					
Tubing			121,000		121,000
Wellhead	90,000		30,000		120,000
Packers, Liner Hangers		105,000	10,000		115,000
Tanks				16,000	16,000
Production Vessels			90,000	13,025	103,025
Flow Lines			50,000	\$-	50,000
Rod string					
Artificial Lift Equipment			30,000		30,000
Compressor				2,000	2,000
Installation Costs				24,000	24,000
Surface Pumps			5,000	\$-	5,000
Non-controllable Surface				6	6
Non-controllable Downhole					
Downhole Pumps					
Measurement & Meter Installation			12,500	5,500	18,000
Gas Conditioning / Dehydration				\$-	
Interconnecting Facility Piping				15,000	15,000
Gathering / Bulk Lines					
Valves, Dumps, Controllers			2,000	1,000	3,000
Tank / Facility Containment				2,000	2,000
Flare Stack				2,000	2,000
Electrical / Grounding				500	500
Communications / SCADA				1,000	1,000
Instrumentation / Safety			5,000	5,000	10,000
<b>TOTAL TANGIBLES &gt;</b>	<b>1,178,881</b>	<b>105,000</b>	<b>355,500</b>	<b>87,025</b>	<b>1,726,406</b>
<b>TOTAL COSTS &gt;</b>	<b>5,224,434</b>	<b>7,311,220</b>	<b>668,700</b>	<b>103,425</b>	<b>13,307,779</b>

**PREPARED BY MATADOR PRODUCTION COMPANY:**

Drilling Engineer:	Blake Hermer	Team Lead - WTX/NM	<i>WTE</i>
Completions Engineer:	Waylon Vrat		WTE
Production Engineer:	John Romano		

**MATADOR RESOURCES COMPANY APPROVAL:**

Executive VP, COO/CFO	VP - Res Engineering	VP - Drilling
DEI	EMR	DG
Executive VP, Legal	Exec Dir - Exploration	
CA	NLF	
President		
NVH		

**NON OPERATING PARTNER APPROVAL:**

Company Name:	Working Interest (%):	Tax ID:
Signed by:	Date:	
Title:	Approval: Yes No (mark one)	

The results on this AFE are for informational purposes only and should not be used as a basis for any decision. The results on this AFE are for informational purposes only and should not be used as a basis for any decision. The results on this AFE are for informational purposes only and should not be used as a basis for any decision. The results on this AFE are for informational purposes only and should not be used as a basis for any decision.



ONE LINCOLN CENTRE • 5400 LBJ FREEWAY • SUITE 1500 • DALLAS, TEXAS 75240  
Phone (972) 371-5200 • Fax (972) 371-5201

DATE:	October 18, 2018	AFE NO.:	500000.654 01.001
WELL NAME:	Boros Federal #222H	FIELD:	
LOCATION:	Section 15&22-26S-31E	MD/TVD:	22667'/12600'
COUNTY/STATE:	Eddy, NM	LATERAL LENGTH:	about 9600'
MRC Wt:			
GEOLOGIC TARGET:	Wolfcamp		
REMARKS:	Drill, complete and equip a horizontal lower Wolfcamp target with 46 stages		

PREPARED BY MATADOR PRODUCTION COMPANY:

Team Lead - WTX/NM L TE  
WTX

VP - Drilling \_\_\_\_\_ BG

Company Name: \_\_\_\_\_ Working Interest (%): \_\_\_\_\_ Tax ID: \_\_\_\_\_  
Signed by: \_\_\_\_\_ Date: \_\_\_\_\_  
Title: \_\_\_\_\_ Approval Yes \_\_\_\_\_ No (mark one)

AFE - Version 3









March 15, 2019

**VIA CERTIFIED MAIL**  
**CERTIFIED RECEIPT REQUESTED****TO: ALL INTEREST OWNERS SUBJECT TO POOLING PROCEEDINGS****Re: Application of Matador Production Company for compulsory pooling, Eddy County, New Mexico.**  
**Boros Fed Com 201H Well**  
**Boros Fed Com 202H Well**  
**Boros Fed Com 221H Well**  
**Boros Fed Com 222H Well**

Ladies &amp; Gentlemen:

This letter is to advise you that Matador Production Company has filed the enclosed application with the New Mexico Oil Conservation Division. A hearing has been requested before a Division Examiner on April 4, 2019 and the status of the hearing can be monitored through the Division's website at <http://www.emnrd.state.nm.us/ocd/>. Division hearings will commence at 8:15 a.m. in Porter Hall at the Oil Conservation Division's Santa Fe Offices located at 1220 South Saint Francis Drive, Santa Fe, New Mexico 87505. You are not required to attend this hearing, but as an owner of an interest that may be affected by this application, you may appear and present testimony. Failure to appear at that time and become a party of record will preclude you from challenging the matter at a later date.

Parties appearing in cases are required by Division Rule 19.15.4.13.B to file a Pre-hearing Statement four business days in advance of a scheduled hearing. This statement must be filed at the Division's Santa Fe office at the above specified address and should include: the names of the parties and their attorneys; a concise statement of the case; the names of all witnesses the party will call to testify at the hearing; the approximate time the party will need to present its case; and identification of any procedural matters that are to be resolved prior to the hearing.

If you have any questions about this matter, please contact Cassie Hahn at (972) 371-5440 or [chahn@matadorresources.com](mailto:chahn@matadorresources.com).

Sincerely,

**Adam G. Rankin**  
**ATTORNEY FOR MATADOR PRODUCTION**  
**COMPANY**





## Shipment Confirmation Acceptance Notice

### A. Mailer Action

**Note to Mailer:** The labels and volume associated to this form online, **must** match the labeled packages being presented to the USPS® employee with this form.

Matador - Boros 201 202 221 222 101 121H Wells  
CM# 83379.0001  
Notice Parties

Shipment Date: 03/12/2019

Shipped From:

Name: HOLLAND & HART LLP

Address: 110 N GUADALUPE ST # 1

City: SANTA FE

State: NM ZIP+4® 87501

Type of Mail	Volume
Priority Mail Express®	
Priority Mail®	0
First-Class Package Service®	
Returns	
International*	
Other	5
Total	5

\*Start time for products with service guarantees will begin when mail arrives at the local Post Office™ and items receive individual processing and acceptance scans.

### B. USPS Action

Note to RSS Clerk:

1. Home screen > Mailing/Shipping > More
2. Select Shipment Confirm
3. Scan or enter the barcode/label number from PS Form 5630
4. Confirm the volume count message by selecting Yes or No
5. Select Pay and End Visit to complete transaction

USPS EMPLOYEE: Please scan upon pickup or receipt of mail.  
Leave form with customer or in customer's mail receptacle.

USPS SCAN AT ACCEPTANCE



9275 0901 1935 6200 0013 2211 70







## Firm Mailing Book For Accountable Mail

[illegible]



Boros Wells 20190404 Docket

Recipient

Occidental Permian Limited Partnership 580 Westlake Park Blvd Houston TX 77079  
Gates Properties Ltd PO BOX 81119 Midland TX 79708  
John W Gates LLC 706 West Grand Ave Artesia NM 88210  
Holloran Family Joint Venture 927 Park Rd El Paso TX 79902  
Chisos Minerals LLC 1111 Bagby St Suite 2150 Houston TX 77002

Status

Return To Sender  
Delivered Signature Received  
Delivered Signature Received  
In-Transit  
Delivered Signature Received



**BEFORE THE OIL CONSERVATION DIVISION**  
Santa Fe, New Mexico  
**Exhibit No. 7**  
Submitted by: **MRC PERMIAN CO.**  
Hearing Date: April 4, 2019  
Case Nos. 20365 & 20366



# CARLSBAD CURRENT-ARGUS

## AFFIDAVIT OF PUBLICATION

Ad No.  
0001280267

HOLLAND & HART  
PO BOX 2208


SANTA FE NM 87504

I, a legal clerk of the **Carlsbad Current-Argus**, a newspaper published daily at the City of Carlsbad, in said county of Eddy, state of New Mexico and of general paid circulation in said county; that the same is a duly qualified newspaper under the laws of the State wherein legal notices and advertisements may be published; that the printed notice attached hereto was published in the regular and entire edition of said newspaper and not in supplement thereof on the date as follows, to wit:

03/16/19

  
Legal Clerk

Subscribed and sworn before me this  
18th of March 2019.

  
State of WI, County of Brown  
NOTARY PUBLIC

9-19-21

My Commission Expires



Ad#:0001280267  
P O :  
# of Affidavits :0.00

## STATE OF NEW MEXICO ENERGY, MINERALS AND NATURAL RESOURCES DEPARTMENT OIL CONSERVATION DIVISION SANTA FE, NEW MEXICO

The State of New Mexico through its Oil Conservation Division hereby gives notice pursuant to law and the Rules and Regulations of the Division of the following public hearing to be held at 8:15 A.M. on **April 4, 2019**, in the Oil Conservation Division Hearing Room at 1220 South St. Francis, Santa Fe, New Mexico, before an examiner duly appoint for the hearing. If you are an individual with a disability who is in need of a reader, amplifier, qualified sign language interpreter, or any other form of auxiliary aid or service to attend or participate in the hearing, please contact: Florene Davidson at 505-476-3458 or through the New Mexico Relay Network, 1-800-659-1779 by **March 25, 2019**. Public documents, including the agenda and minutes, can be provided in various accessible forms. Please contact Florene Davidson if a summary or other type of accessible form is needed.

### STATE OF NEW MEXICO TO: All named parties and persons having any right, title, interest or claim in the following case and notice to the public.

(NOTE: All land descriptions herein refer to the New Mexico Principal Meridian whether or not so stated.)

**To: All overriding royalty interest owners and pooled parties, including: Occidental Permian Limited Partnership; Gates Properties, Ltd.; JohnW. Gates, LLC; Halloran Family Joint Venture; Chisos Minerals, LLC.**

**Case No. 20365: Application of Matador Production Company for compulsory pooling, Eddy County, New Mexico.** Applicant in the above-styled cause seeks an order pooling all uncommitted interest owners in the Bone Spring formation underlying a 320-acre horizontal spacing unit comprised of the W/2 W/2 of Sections 15 and 22, Township 26 South, Range 31 East, NMPM, Eddy County, New Mexico. The above-referenced unit will be dedicated to the following proposed wells:

- **Boros Fed Com 101H Well**, which will be horizontally drilled from a surface location in the NW/4 NW/4 (Unit D) of Section 15 to bottom hole location in the SW/4 SW/4 (Unit M) of Section 22.
- **Boros Fed Com 121H Well**, which will be horizontally drilled from a surface location in the NW/4 NW/4 (Unit D) of Section 15 to bottom hole location in the in SW/4 SW/4 (Unit M) of Section 22.



The completed interval for each well will remain within the standard setbacks as required by the Statewide rules for oil wells. Also, to be considered will be the cost of drilling and completing the well, the allocation of the cost thereof, as well as actual operating costs and charges for supervision, designation of Matador Production Company as operator, and a 200% charge for risk involved in drilling and completing the well. Said area is located approximately 36 miles southeast of Carlsbad, New Mexico.





March 15, 2019

**VIA CERTIFIED MAIL**  
**CERTIFIED RECEIPT REQUESTED**

**TO: ALL INTEREST OWNERS SUBJECT TO POOLING PROCEEDINGS**

**Re: Application of Matador Production Company for compulsory pooling, Eddy County, New Mexico.**  
**Boros Fed Com 101H Well**  
**Boros Fed Com 121H Well**

Ladies & Gentlemen:

This letter is to advise you that Matador Production Company has filed the enclosed application with the New Mexico Oil Conservation Division. A hearing has been requested before a Division Examiner on April 4, 2019 and the status of the hearing can be monitored through the Division's website at <http://www.emnrd.state.nm.us/ocd/>. Division hearings will commence at 8:15 a.m. in Porter Hall at the Oil Conservation Division's Santa Fe Offices located at 1220 South Saint Francis Drive, Santa Fe, New Mexico 87505. You are not required to attend this hearing, but as an owner of an interest that may be affected by this application, you may appear and present testimony. Failure to appear at that time and become a party of record will preclude you from challenging the matter at a later date.

Parties appearing in cases are required by Division Rule 19.15.4.13.B to file a Pre-hearing Statement four business days in advance of a scheduled hearing. This statement must be filed at the Division's Santa Fe office at the above specified address and should include: the names of the parties and their attorneys; a concise statement of the case; the names of all witnesses the party will call to testify at the hearing; the approximate time the party will need to present its case; and identification of any procedural matters that are to be resolved prior to the hearing.

If you have any questions about this matter, please contact Cassie Hahn at (972) 371-5440 or [chahn@matadorresources.com](mailto:chahn@matadorresources.com).

Sincerely,

Adam G. Rankin

**ATTORNEY FOR MATADOR PRODUCTION  
COMPANY**





## Shipment Confirmation Acceptance Notice

### A. Mailer Action

**Note to Mailer:** The labels and volume associated to this form online, **must** match the labeled packages being presented to the USPS® employee with this form.

Matador - Boros 201 202 221 222 101 121H Wells  
CM# 83379.0001  
Notice Parties

Shipment Date: 03/12/2019

Shipped From:

Name: HOLLAND & HART LLP

Address: 110 N GUADALUPE ST # 1

City: SANTA FE

State: NM ZIP+4® 87501

Type of Mail	Volume
Priority Mail Express®	
Priority Mail®	0
First-Class Package Service®	
Returns	
International*	
Other	5
Total	5

\*Start time for products with service guarantees will begin when mail arrives at the local Post Office™ and items receive individual processing and acceptance scans.

### B. USPS Action

Note to RSS Clerk:

1. Home screen > Mailing/Shipping > More
2. Select Shipment Confirm
3. Scan or enter the barcode/label number from PS Form 5630
4. Confirm the volume count message by selecting Yes or No
5. Select Pay and End Visit to complete transaction

USPS EMPLOYEE: Please scan upon pickup or receipt of mail.  
Leave form with customer or in customer's mail receptacle.

USPS SCAN AT ACCEPTANCE



9275 0901 1935 6200 0013 2211 70







Holland & Hart LLP  
110 N Guadalupe St # 1  
Santa Fe NM 87501

**Affix Stamp Here**  
(if issued as an international  
certificate of mailing or for  
additional copies of this receipt).  
**Postmark with Date of Receipt.**

Check type of mail or service	
<input type="checkbox"/> Adult Signature Required	<input type="checkbox"/> Priority Mail Express
<input type="checkbox"/> Adult Signature Restricted Delivery	<input type="checkbox"/> Registered Mail
<input checked="" type="checkbox"/> Certified Mail	<input type="checkbox"/> Return Receipt for Merchandise
<input type="checkbox"/> Certified Mail Restricted Delivery	<input type="checkbox"/> Signature Confirmation
<input type="checkbox"/> Collect on Delivery (COD)	<input type="checkbox"/> Signature Confirmation Restricted Delivery
<input type="checkbox"/> Insured Mail	
<input type="checkbox"/> Priority Mail	

Address (Name, Street, City, State, & ZIP Code™)

Occidental Permian Limited Partnership 580 Westlake Park Blvd  
Houston TX 77079

Gates Properties Ltd PO BOX 81119 Midland TX 79708

John W Gates LLC 706 West Grand Ave Artesia NM 88210

Holloran Family Joint Venture 927 Park Rd El Paso TX 79902

Chisos Minerals LLC 1111 Bagby St Suite 2150 Houston TX 77002

Postmaster, Per (Name of receiving employee)

Total Number of Pieces Listed by Sender	Total Number of Pieces Received at Post Office
---	--

5[illegible]



Boros Wells 20190404 Docket

Recipient

Occidental Permian Limited Partnership 580 Westlake Park Blvd Houston TX 77079

Gates Properties Ltd PO BOX 81119 Midland TX 79708

John W Gates LLC 706 West Grand Ave Artesia NM 88210

Holloran Family Joint Venture 927 Park Rd El Paso TX 79902

Chisos Minerals LLC 1111 Bagby St Suite 2150 Houston TX 77002

Status

Return To Sender

Delivered Signature Received

Delivered Signature Received

In-Transit

Delivered Signature Received



# CARLSBAD CURRENT-ARGUS

## AFFIDAVIT OF PUBLICATION

Ad No.  
0001280273

HOLLAND & HART  
PO BOX 2208

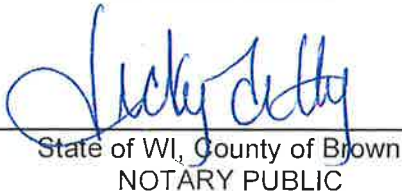
SANTA FE NM 87504

I, a legal clerk of the **Carlsbad Current-Argus**, a newspaper published daily at the City of Carlsbad, in said county of Eddy, state of New Mexico and of general paid circulation in said county; that the same is a duly qualified newspaper under the laws of the State wherein legal notices and advertisements may be published; that the printed notice attached hereto was published in the regular and entire edition of said newspaper and not in supplement thereof on the date as follows, to wit:

03/16/19

  
Legal Clerk

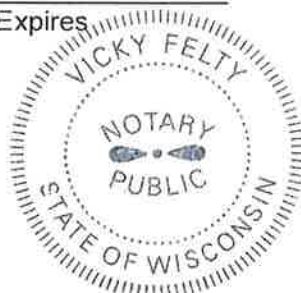
Subscribed and sworn before me this  
18th of March 2019.

  
State of WI, County of Brown  
NOTARY PUBLIC

9-19-21

My Commission Expires

Ad#:0001280273  
P O : Boros Fed 201H  
# of Affidavits :0.00



## STATE OF NEW MEXICO ENERGY, MINERALS AND NATURAL RESOURCES DEPARTMENT OIL CONSERVATION DIVISION SANTA FE, NEW MEXICO

The State of New Mexico through its Oil Conservation Division hereby gives notice pursuant to law and the Rules and Regulations of the Division of the following public hearing to be held at 8:15 A.M. on **April 4, 2019**, in the Oil Conservation Division Hearing Room at 1220 South St. Francis, Santa Fe, New Mexico, before an examiner duly appoint for the hearing. If you are an individual with a disability who is in need of a reader, amplifier, qualified sign language interpreter, or any other form of auxiliary aid or service to attend or participate in the hearing, please contact: Florene Davidson at 505-476-3458 or through the New Mexico Relay Network, 1-800-659-1779 by **March 25, 2019**. Public documents, including the agenda and minutes, can be provided in various accessible forms. Please contact Florene Davidson if a summary or other type of accessible form is needed.

### STATE OF NEW MEXICO TO: All named parties and persons having any right, title, interest or claim in the following case and notice to the public.

(NOTE: All land descriptions herein refer to the New Mexico Principal Meridian whether or not so stated.)

**To: All overriding royalty interest owners and pooled parties, including: Occidental Permian Limited Partnership; Gates Properties, Ltd.; JohnW. Gates, LLC; Halloran Family Joint Venture; Chisos Minerals, LLC.**

**Case No. 20366: Application of Matador Production Company for compulsory pooling, Eddy County, New Mexico.** Applicant in the above-styled cause seeks an order pooling all uncommitted interest owners in the Wolfcamp formation underlying a 640-acre horizontal spacing unit comprised of the W/2 of Sections 15 and 22, Township 26 South, Range 31 East, NMPM, Eddy County, New Mexico. The above-referenced unit will be dedicated to the following proposed wells:

- **BorosFed Com 201H Well**, which will be horizontally drilled from a surface location in the NW/4 NW/4 (Unit D) of Section 15 to bottom hole location in the SW/4 SW/4 (Unit M) of Section 22.
- **BorosFed Com 202H Well**, which will be horizontally drilled from a surface location in the NE/4 NW/4 (Unit C) of Section 15 to bottom hole location in the SE/4 SW/4 (Unit N) of Section 22.



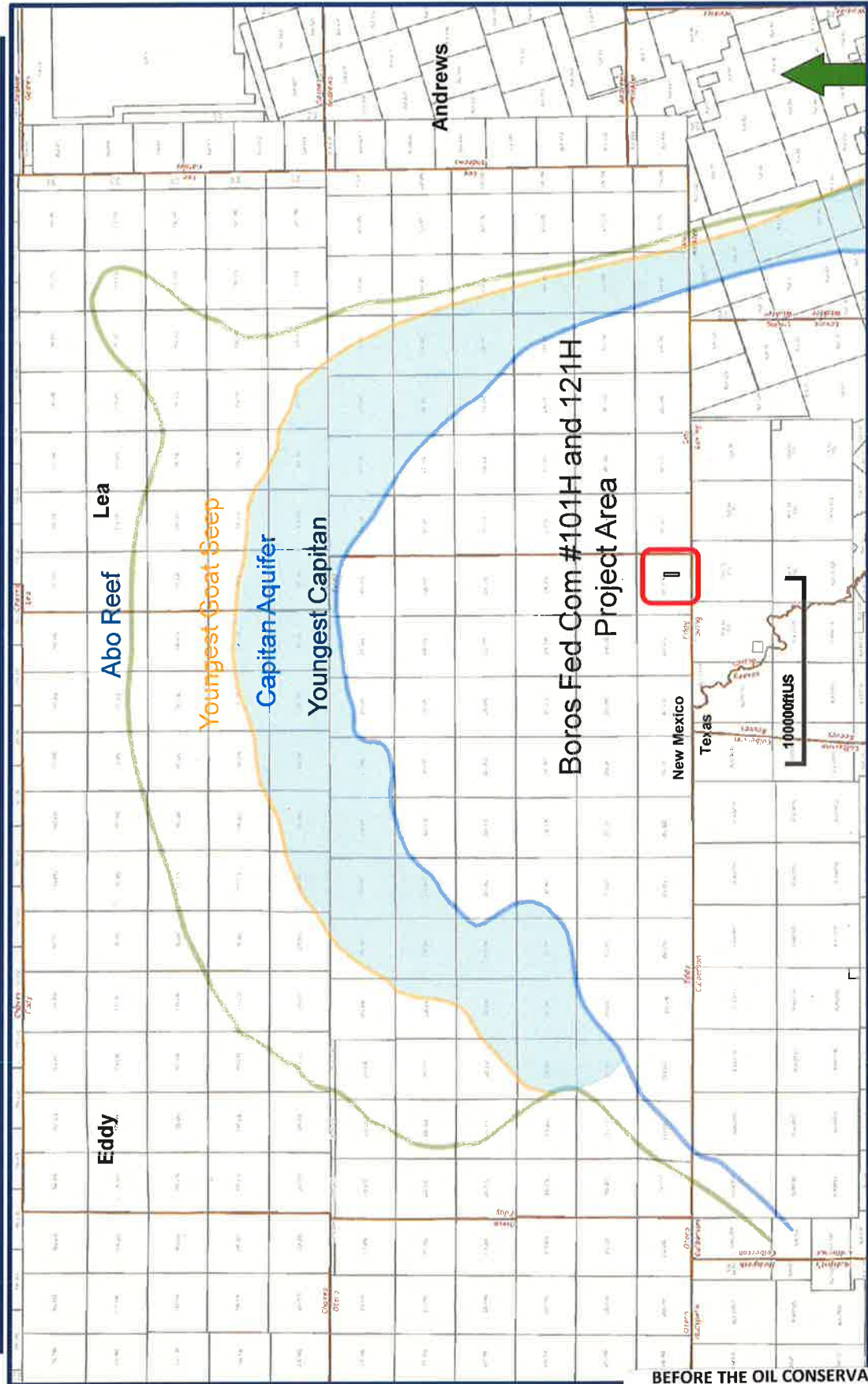
• **Boros Fed Com 222H Well**, which will be horizontally drilled from a surface location in the NW/4 NW/4 (Unit D) of Section 15 to bottom hole location in the SW/4 SW/4 (Unit M) of Section 22.

• **Boros Fed Com 222H Well**, which will be horizontally drilled from a surface location in the NE/4 NW/4 (Unit C) of Section 15 to bottom hole location in the SE/4 SW/4 (Unit N) of Section 22.

The completed interval for each well will comply with the 330-foot setback requirement contained in the Special Rules for the Wolfcamp Purple Sage Gas Pool. Also, to be considered will be the cost of drilling and completing the wells, the allocation of the cost thereof, as well as actual operating costs and charges for supervision, designation of Matador Production Company as operator, and a 200% charge for risk involved in drilling and completing the wells. Said area is located approximately 36 miles southeast of Carlsbad, New Mexico.



# Jennings; Bone Spring, West (Pool Code 97860) Locator Map



Boros Fed Com #101H  
Boros Fed Com #121H

BEFORE THE OIL CONSERVATION DIVISION

Santa Fe, New Mexico

Exhibit No. 8

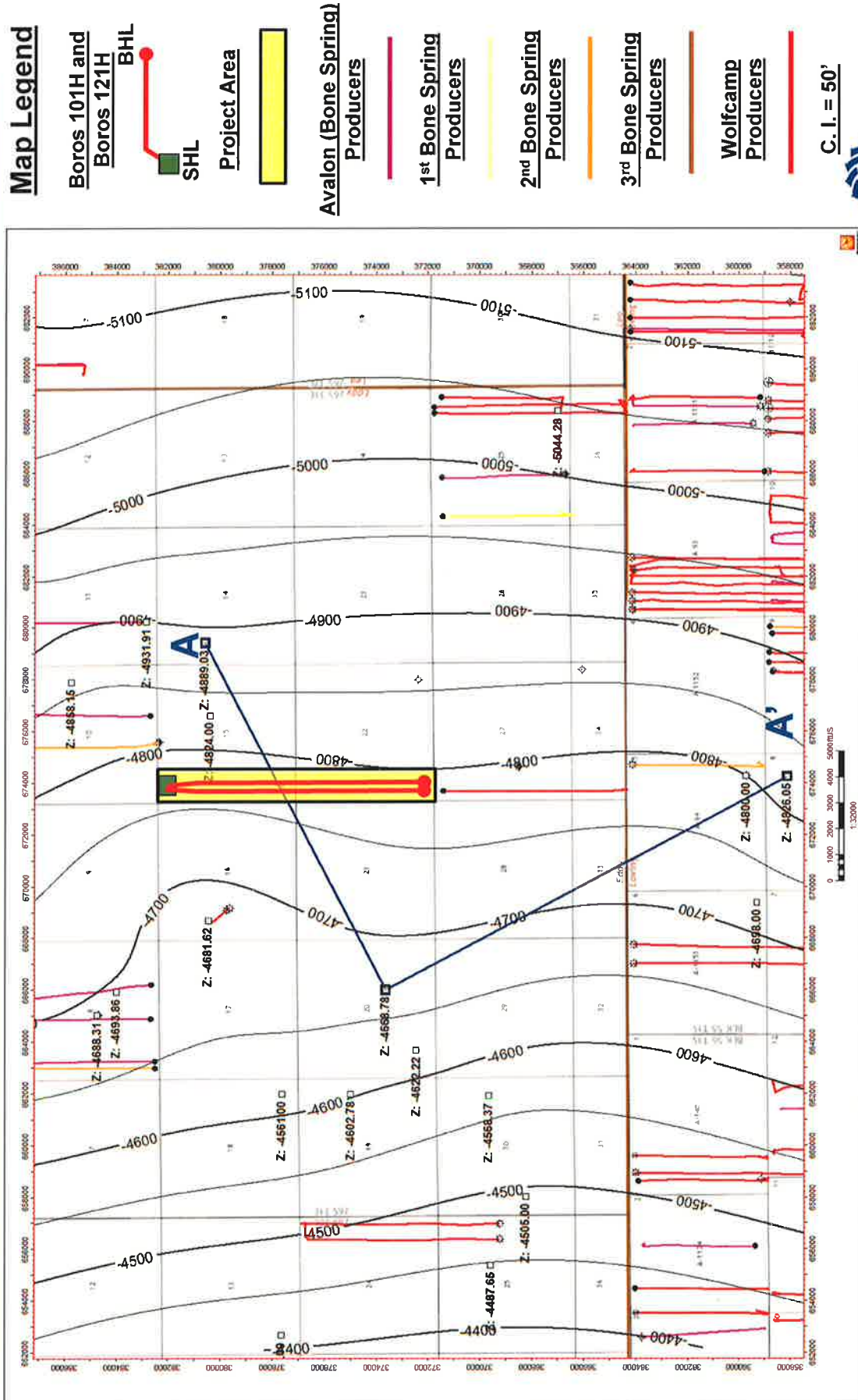
Submitted by: MRC PERMIAN CO.

Hearing Date: April 4, 2019

Case Nos. 20365 & 20366



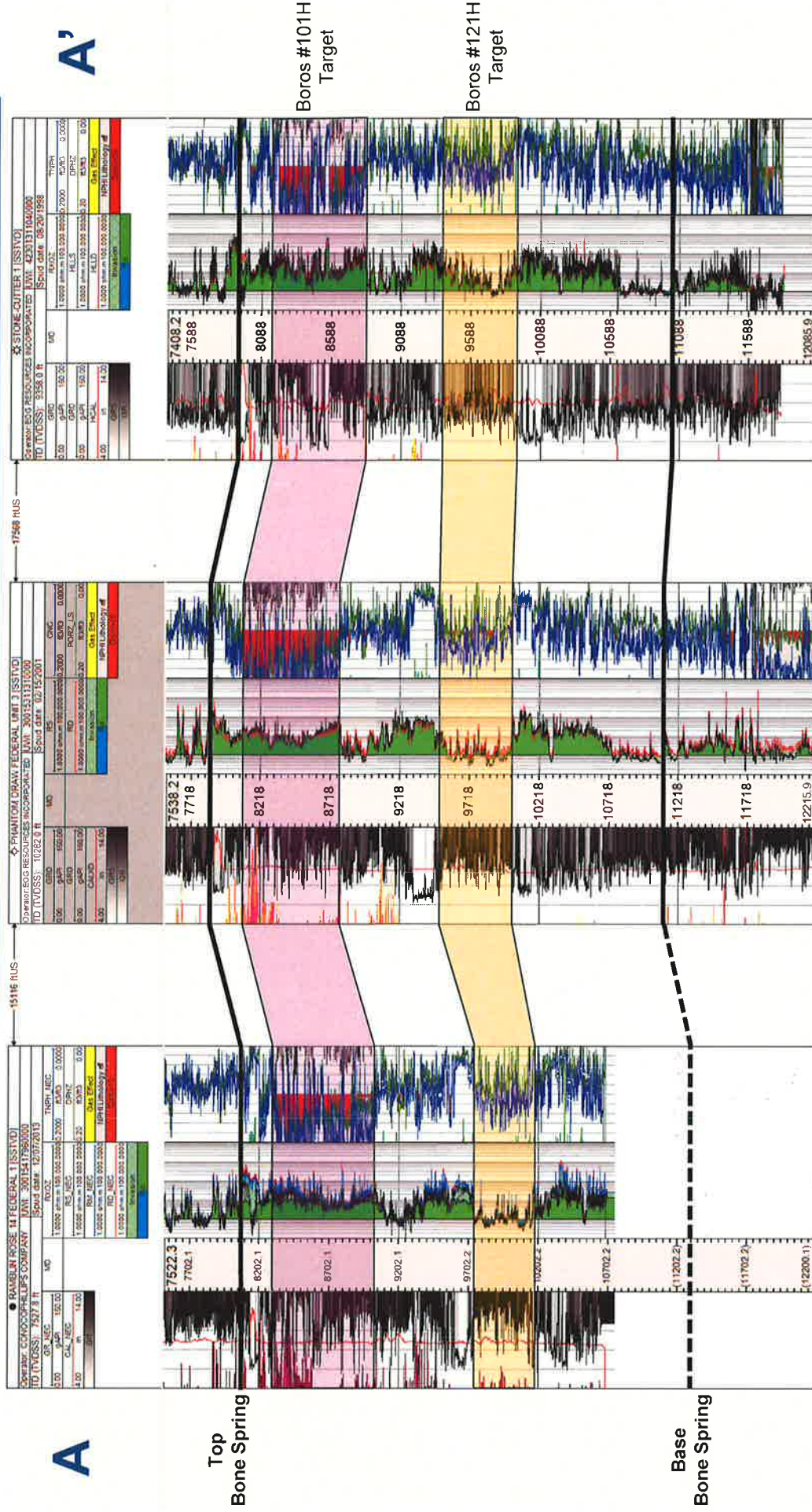
# Jennings; Bone Spring, West (Pool Code 97860) Structure Map (Top Bone Spring Lime Subsea)



Boros Fed Com #101H  
Boros Fed Com #121H



# Jennings; Bone Spring, West (Pool Code 97860) Structural Cross Section A - A'



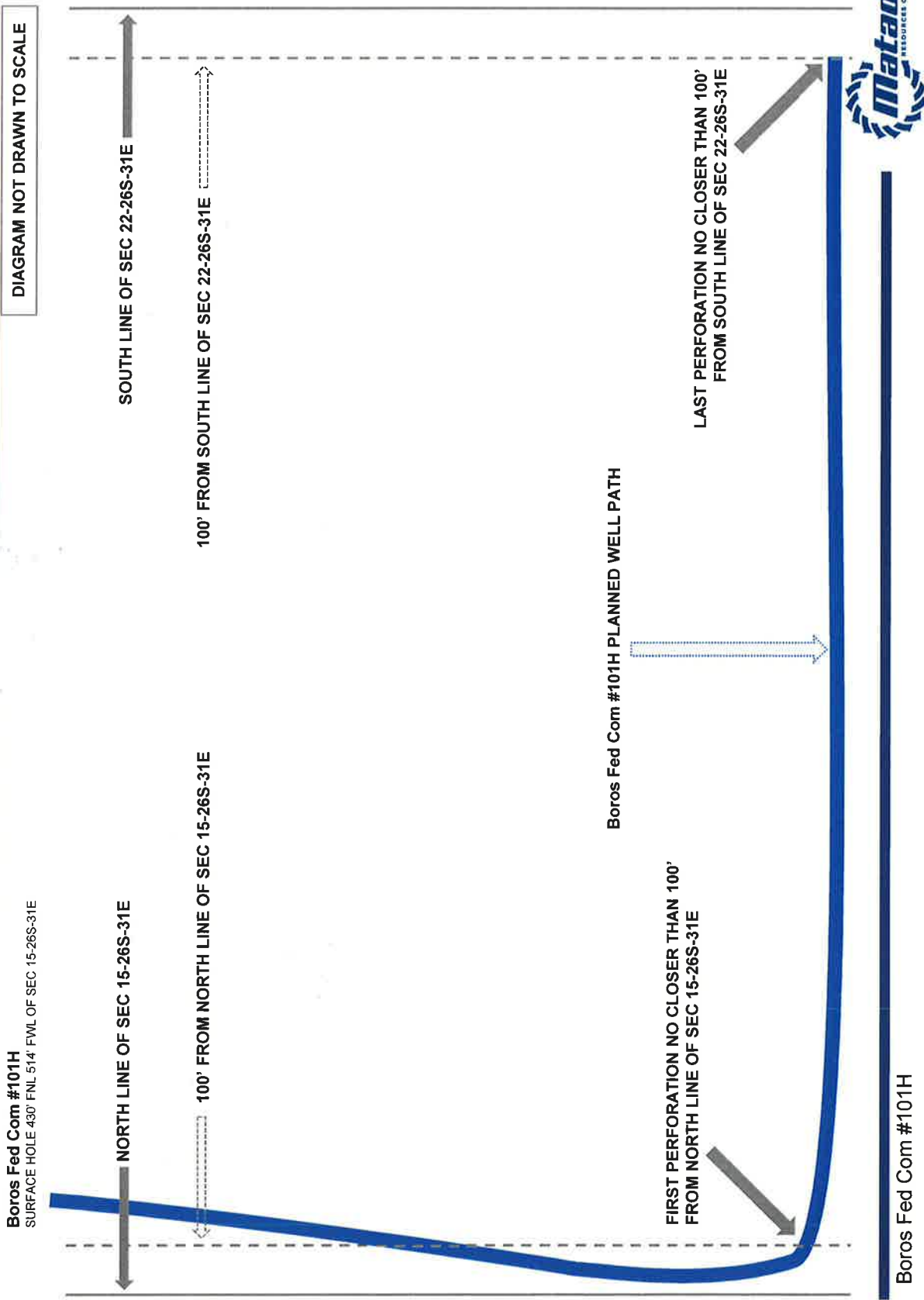
BEFORE THE OIL CONSERVATION DIVISION  
Santa Fe, New Mexico  
Exhibit No. 10  
Submitted by: MRC PERMIAN CO.  
Hearing Date: April 4, 2019  
Case Nos. 20365 & 20366

Boros Fed Com #101H  
Boros Fed Com #121H



# Jennings; Bone Spring, West (Pool Code 97860) Boros Fed Com #101H

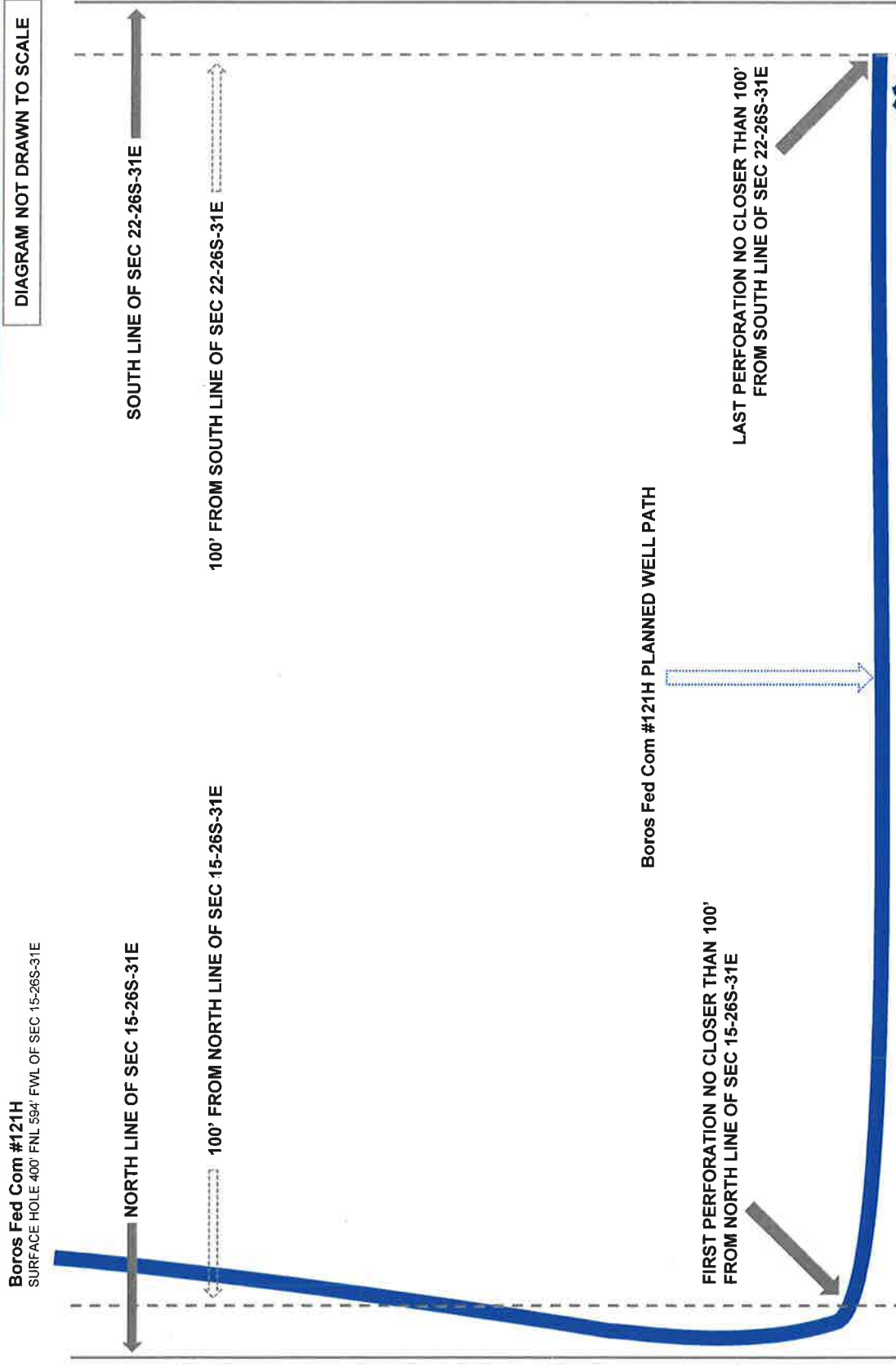
Matador  
Exhibit





# Jennings; Bone Spring, West (Pool Code 97860) Boros Fed Com #121H

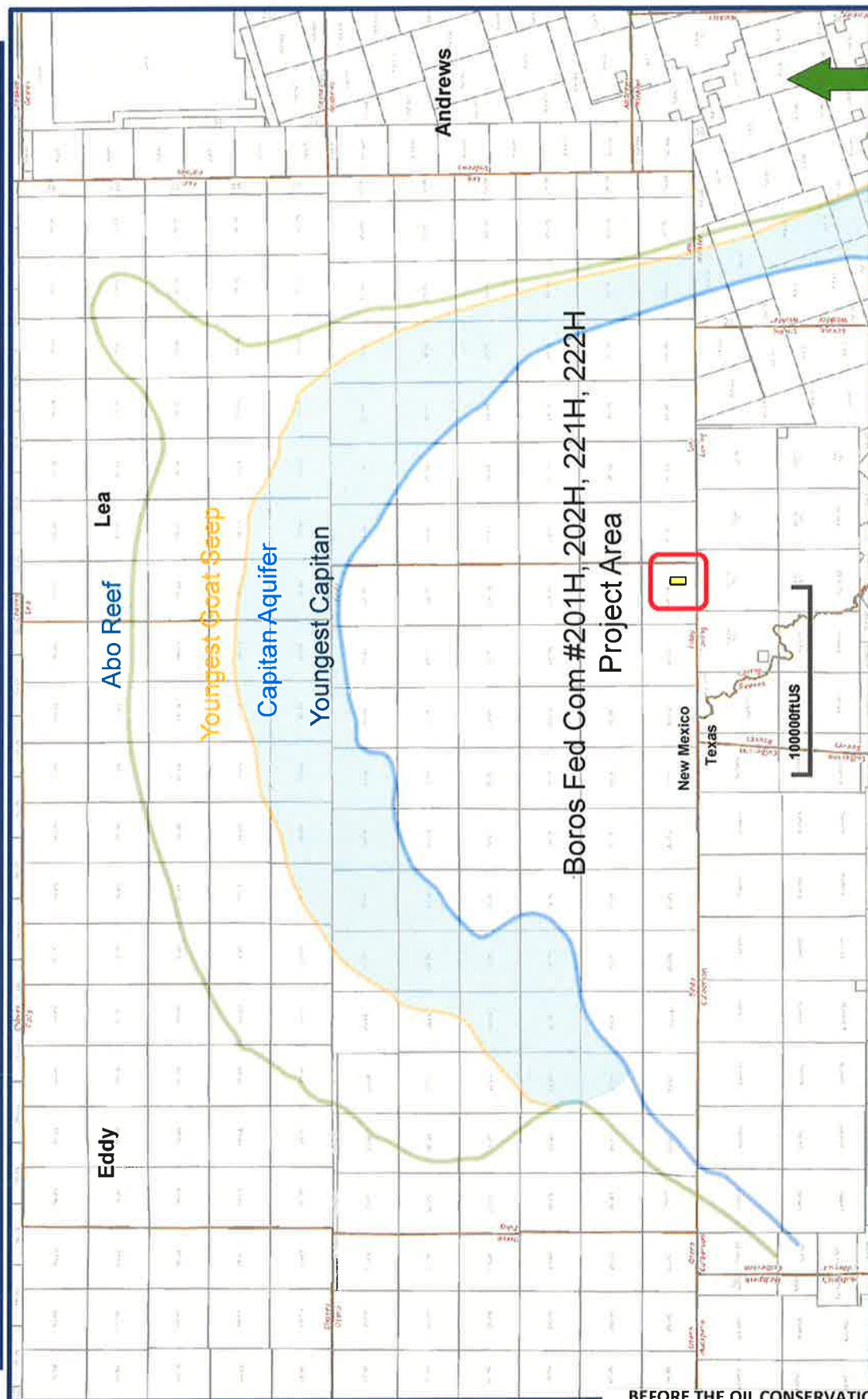
Matador  
Exhibit     



Boros Fed Com #121H



# Purple Sage; Wolfcamp (GAS) (Pool Code 98220) Locator Map



Boros Fed Com #201H, 221H, 202H, 222H

BEFORE THE OIL CONSERVATION DIVISION

Santa Fe, New Mexico

Exhibit No. 12

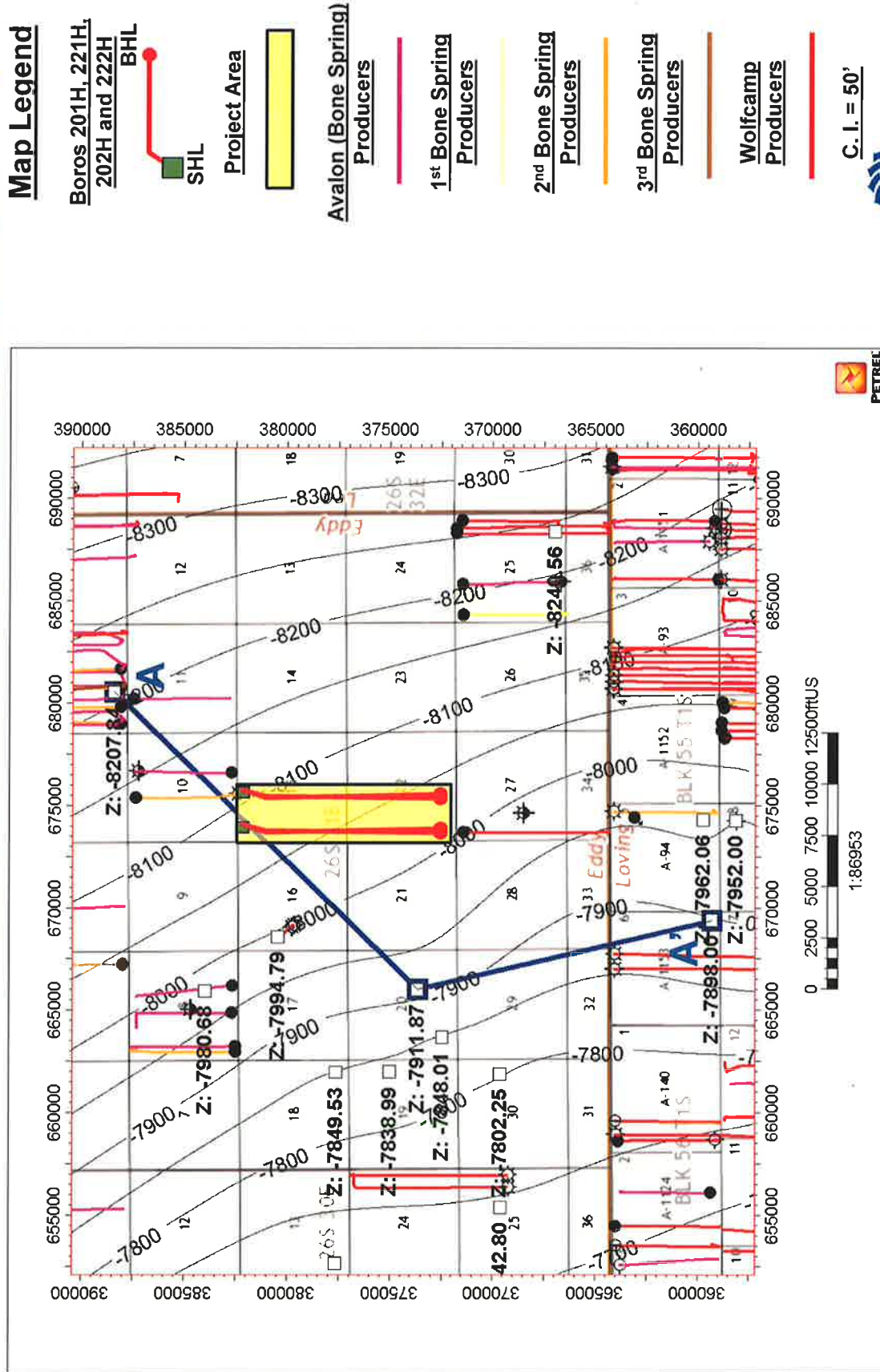
Submitted by: MRC PERMIAN CO.

Hearing Date: April 4, 2019

Case Nos. 20365 & 20366



# Purple Sage; Wolfcamp (GAS) (Pool Code 98220) Structure Map (Top Wolfcamp Subsea)



Boros Fed Com #201H, 221H, 202H, 222H

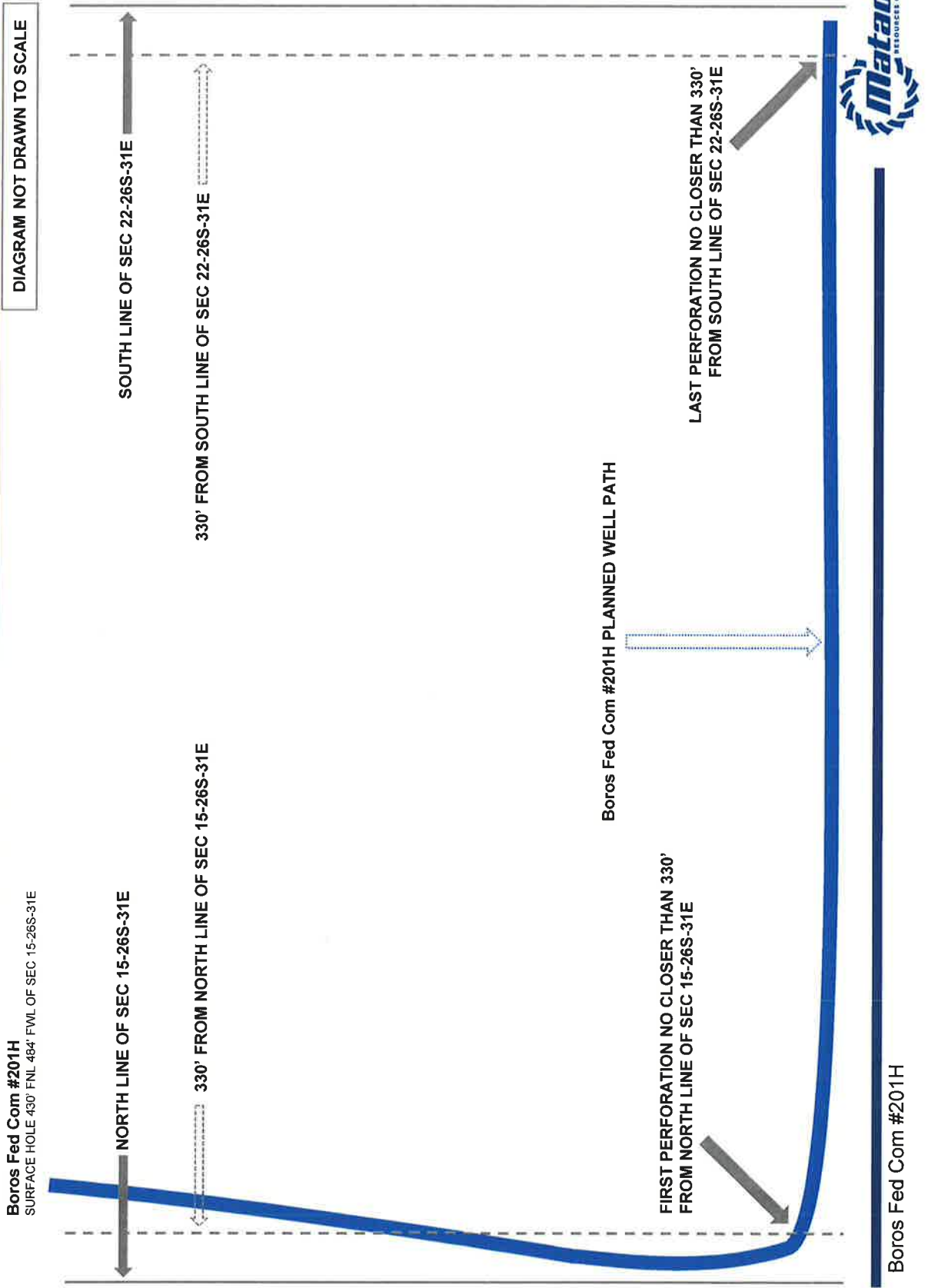




Boros Fed Com #201H, 221H, 202H, 222H



# Purple Sage; Wolfcamp (GAS) (Pool Code 98220) Boros Fed Com #201H



BEFORE THE OIL CONSERVATION DIVISION

Santa Fe, New Mexico

Exhibit No. 15

Submitted by: MRC PERMIAN CO.

Hearing Date: April 4, 2019

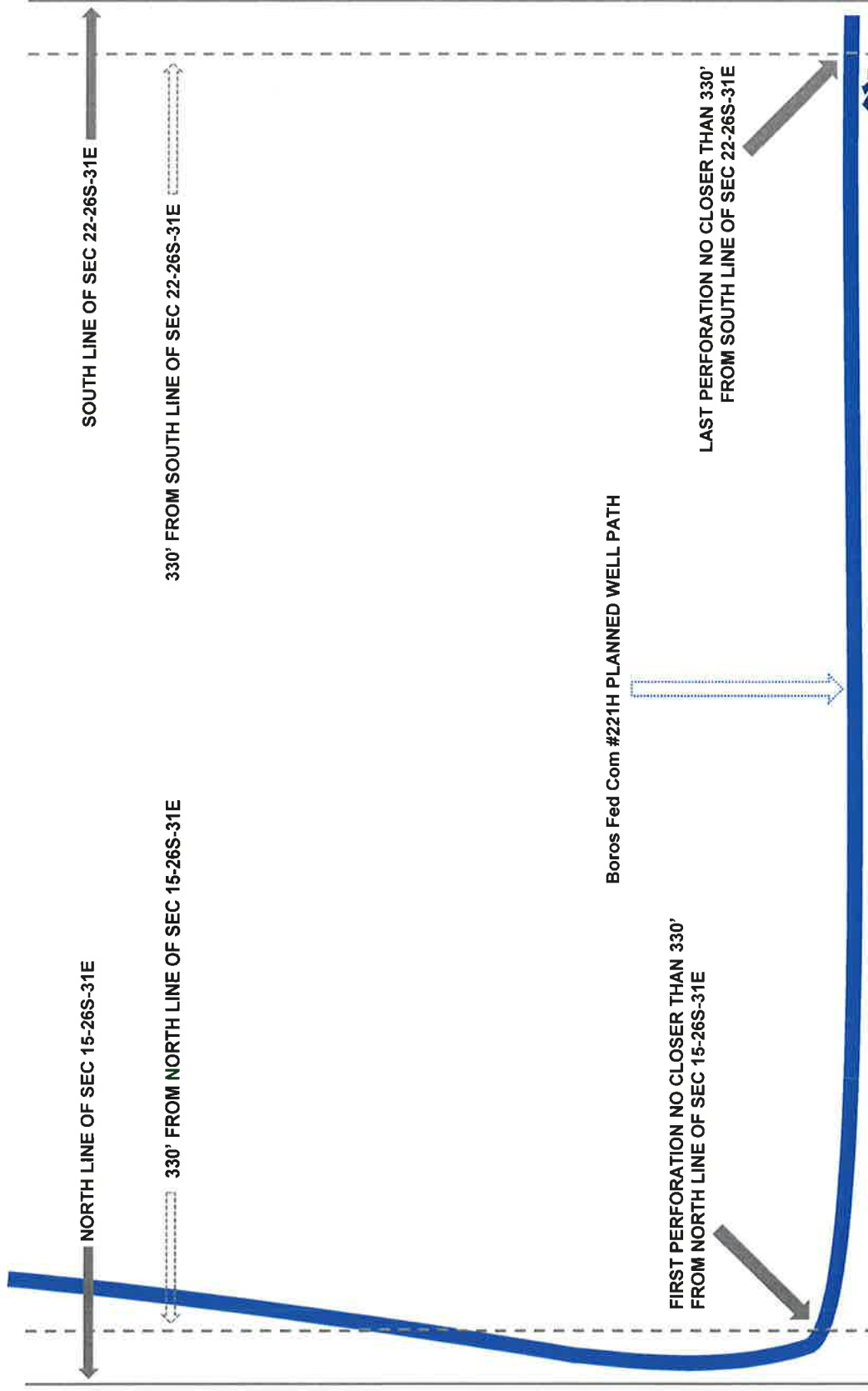
Case Nos. 20365 & 20366



# Purple Sage; Wolfcamp (GAS) (Pool Code 98220) Boros Fed Com #221H

Boros Fed Com #221H  
SURFACE HOLE 400' FNL 484' FWL OF SEC 15-26S-31E

DIAGRAM NOT DRAWN TO SCALE



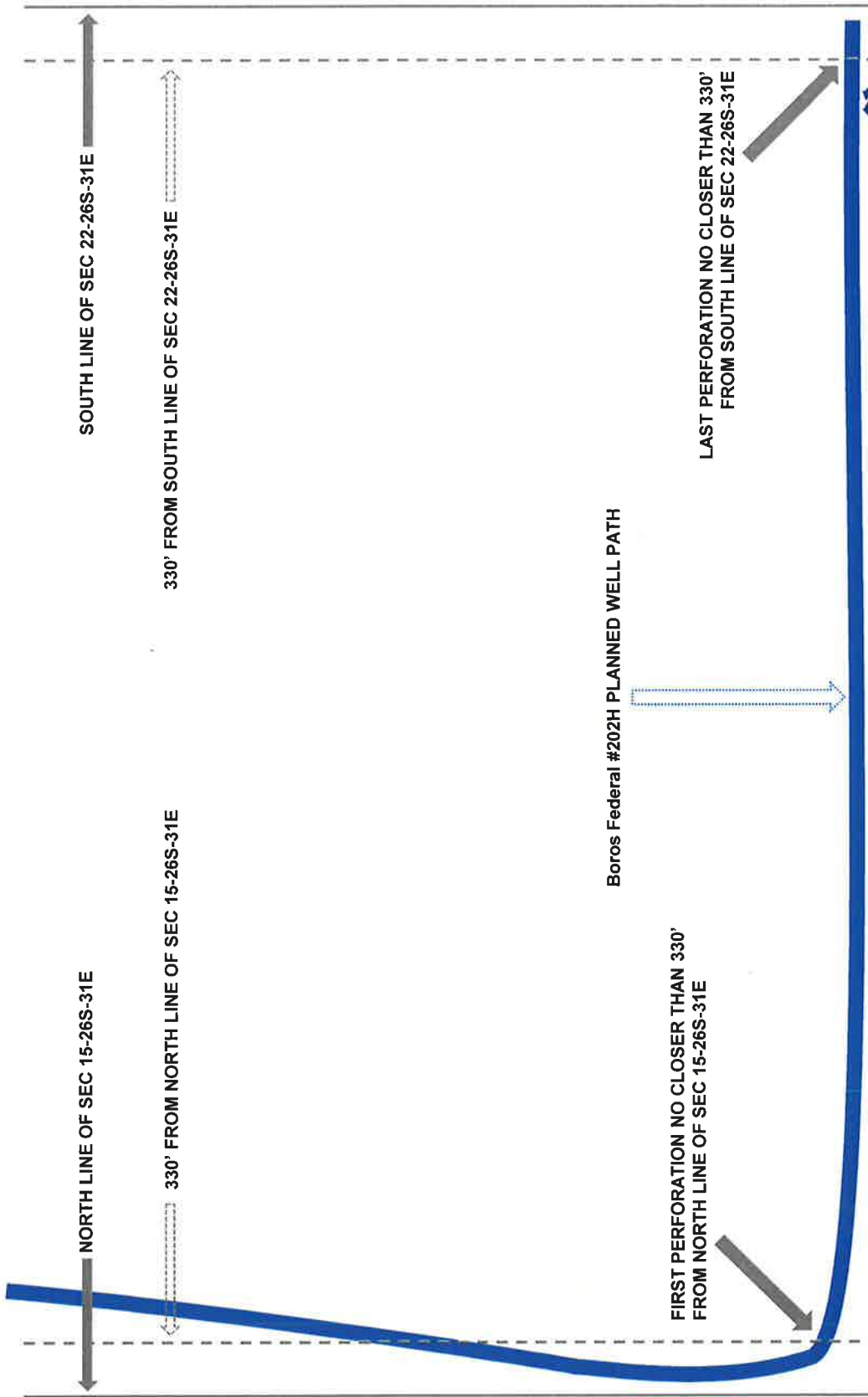
Boros Fed Com #221H



Purple Sage; Wolfcamp (GAS) (Pool Code 98220)  
Boros Federal #202H

Boros Federal #202H  
SURFACE HOLE 430' FNL 1820' FWL OF SEC 15-26S-31E

DIAGRAM NOT DRAWN TO SCALE



Boros Federal #202H



Purple Sage; Wolfcamp (GAS) (Pool Code 98220)  
Boros Federal #222H

