

District I
1625 N. French Dr., Hobbs, NM 88240
Phone: (575) 393-6161 Fax: (575) 393-0720
District II
811 S. First St., Artesia, NM 88210
Phone: (575) 748-1283 Fax: (575) 748-9720
District III
1000 Rio Brazos Road, Aztec, NM 87410
Phone: (505) 334-6178 Fax: (505) 334-6170
District IV
1220 S. St. Francis Dr., Santa Fe, NM 87505
Phone: (505) 476-3460 Fax: (505) 476-3462

State of New Mexico
Energy, Minerals & Natural Resources Department
OIL CONSERVATION DIVISION
1220 South St. Francis Dr.
Santa Fe, NM 87505

Form C-102
Revised August 1, 2011
Submit one copy to appropriate
District Office

☐ AMENDED REPORT

WELL LOCATION AND ACREAGE DEDICATION PLAT

¹ API Number	² Pool Code	³ Pool Name
⁴ Property Code	⁵ Property Name PARKWAY 16-17 STATE COM	⁶ Well Number 2H
⁷ OGRID No.	⁸ Operator Name CIMAREX ENERGY CO.	⁹ Elevation 3349.1'

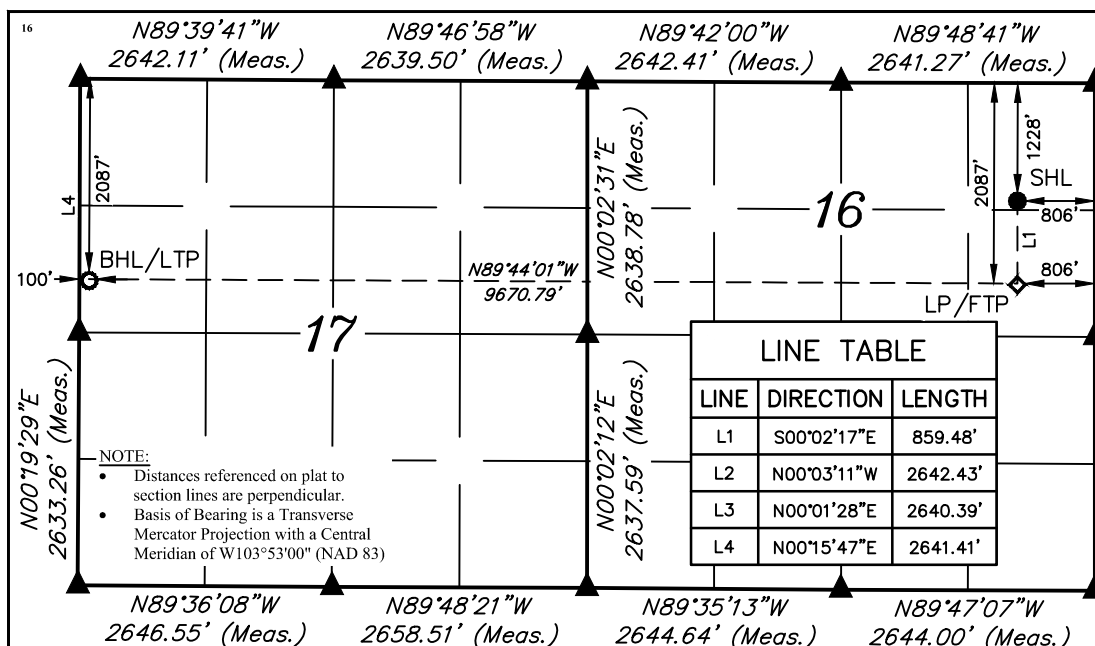
¹⁰ Surface Location

UL or lot no. A	Section 16	Township 19S	Range 29E	Lot Idn	Feet from the 1228	North/South line NORTH	Feet from the 806	East/West line EAST	County EDDY
--------------------	---------------	-----------------	--------------	---------	-----------------------	---------------------------	----------------------	------------------------	----------------

¹¹ Bottom Hole Location If Different From Surface

UL or lot no. E	Section 17	Township 19S	Range 29E	Lot Idn	Feet from the 2087	North/South line NORTH	Feet from the 100	East/West line WEST	County EDDY
¹² Dedicated Acres	¹³ Joint or Infill	¹⁴ Consolidation Code	¹⁵ Order No.						

No allowable will be assigned to this completion until all interests have been consolidated or a non-standard unit has been approved by the division.



¹⁷ OPERATOR
CERTIFICATION

I hereby certify that the information contained herein is true and complete to the best of my knowledge and belief, and that this organization either owns a working interest or unleased mineral interest in the land including the proposed bottom hole location or has a right to drill this well at this location pursuant to a contract with an owner of such a mineral or working interest, or to a voluntary pooling agreement or a compulsory pooling order heretofore entered by the division.

Signature _____ Date _____

Printed Name _____

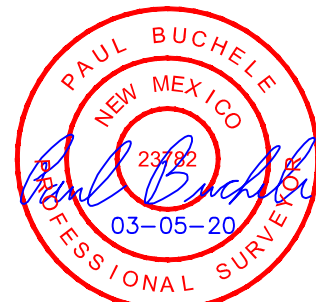
E-mail Address _____

¹⁸ SURVEYOR
CERTIFICATION

I hereby certify that the well location shown on this plat was plotted from field notes of actual surveys made by me or under my supervision, and that the same is true and correct to the best of my belief.

November 21, 2018

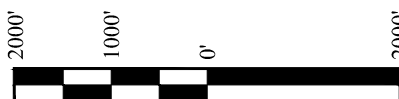
Date of Survey _____
Signature and Seal of Professional Surveyor: _____



Certificate Number: _____

NAD 83 (SURFACE HOLE LOCATION) LATITUDE = 32°39'52.87" (32.664687°) LONGITUDE = 104°04'25.78" (104.073828°)	NAD 83 (LP/FTP) LATITUDE = 32°39'44.37" (32.662325°) LONGITUDE = 104°04'25.75" (104.073821°)	NAD 83 (BHL/LTP) LATITUDE = 32°39'44.63" (32.662397°) LONGITUDE = 104°06'18.86" (104.105239°)
NAD 27 (SURFACE HOLE LOCATION) LATITUDE = 32°39'52.45" (32.664570°) LONGITUDE = 104°04'23.96" (104.073321°)	NAD 27 (LP/FTP) LATITUDE = 32°39'43.95" (32.662208°) LONGITUDE = 104°04'23.93" (104.073314°)	NAD 27 (BHL/LTP) LATITUDE = 32°39'44.21" (32.662280°) LONGITUDE = 104°06'17.03" (104.104731°)
STATE PLANE NAD 83 (N.M. EAST) N: 605641.86' E: 621195.54'	STATE PLANE NAD 83 (N.M. EAST) N: 604782.58' E: 621199.75'	STATE PLANE NAD 83 (N.M. EAST) N: 604786.54' E: 611531.09'
STATE PLANE NAD 27 (N.M. EAST) N: 605579.53' E: 580015.83'	STATE PLANE NAD 27 (N.M. EAST) N: 604720.26' E: 580020.02'	STATE PLANE NAD 27 (N.M. EAST) N: 604724.29' E: 570351.37'

- = SURFACE HOLE LOCATION
- ◆ = LANDING POINT/FIRST TAKE POINT
- = BOTTOM HOLE LOCATION/
LAST TAKE POINT
- ▲ = SECTION CORNER LOCATED



SCALE

DRAWN BY: C.M.T. 11-30-18
REV:2 03-05-20 S.T.O. (WELLBORE CHANGE)



March 12, 2020

Warwick Group
Attn: John Everett
6608 N. Western Ave., Box 417
Oklahoma City, OK 73116

Re: Statement of Estimated Well Costs
Parkway 16-17 State Com 2H
S/2N/2 Sections 16 and 17, Township 19 South, Range 29 East
Eddy County, New Mexico

Dear Pooled Working Interest Owner,

Pursuant to Order No. R-21035, ¶10 of the New Mexico Oil Conservation Division, Cimarex Energy Co. hereby submits its estimated schedule of the cost of drilling, completing and equipping its Parkway 16-17 State Com 2H well, which have materially decreased since the original well proposal sent on January 31, 2019. This statement reflects Cimarex's updated engineering plan for drilling for the well, which will shift the intended BHL from 2060 feet from the North line of Section 17 to 2087 feet from the North, but did not materially change the estimated cost for drilling, completing and equipping the well.

Please call the undersigned with any questions or comments.

Respectfully,

A handwritten signature in black ink, appearing to read "Riley Morris". The signature is fluid and cursive, with a long horizontal stroke at the end.

Riley Morris
432-620-1966

cc: Florene Davidson, NMOCD

District I
1625 N. French Dr., Hobbs, NM 88240
Phone: (575) 393-6161 Fax: (575) 393-0720
District II
811 S. First St., Artesia, NM 88210
Phone: (575) 748-1283 Fax: (575) 748-9720
District III
1000 Rio Brazos Road, Aztec, NM 87410
Phone: (505) 334-6178 Fax: (505) 334-6170
District IV
1220 S. St. Francis Dr., Santa Fe, NM 87505
Phone: (505) 476-3460 Fax: (505) 476-3462

State of New Mexico
Energy, Minerals & Natural Resources Department
OIL CONSERVATION DIVISION
1220 South St. Francis Dr.
Santa Fe, NM 87505

Form C-102
Revised August 1, 2011
Submit one copy to appropriate
District Office

☐ AMENDED REPORT

WELL LOCATION AND ACREAGE DEDICATION PLAT

¹ API Number	² Pool Code	³ Pool Name
⁴ Property Code	⁵ Property Name PARKWAY 16-17 STATE COM	⁶ Well Number 2H
⁷ OGRID No.	⁸ Operator Name CIMAREX ENERGY CO.	⁹ Elevation 3349.1'

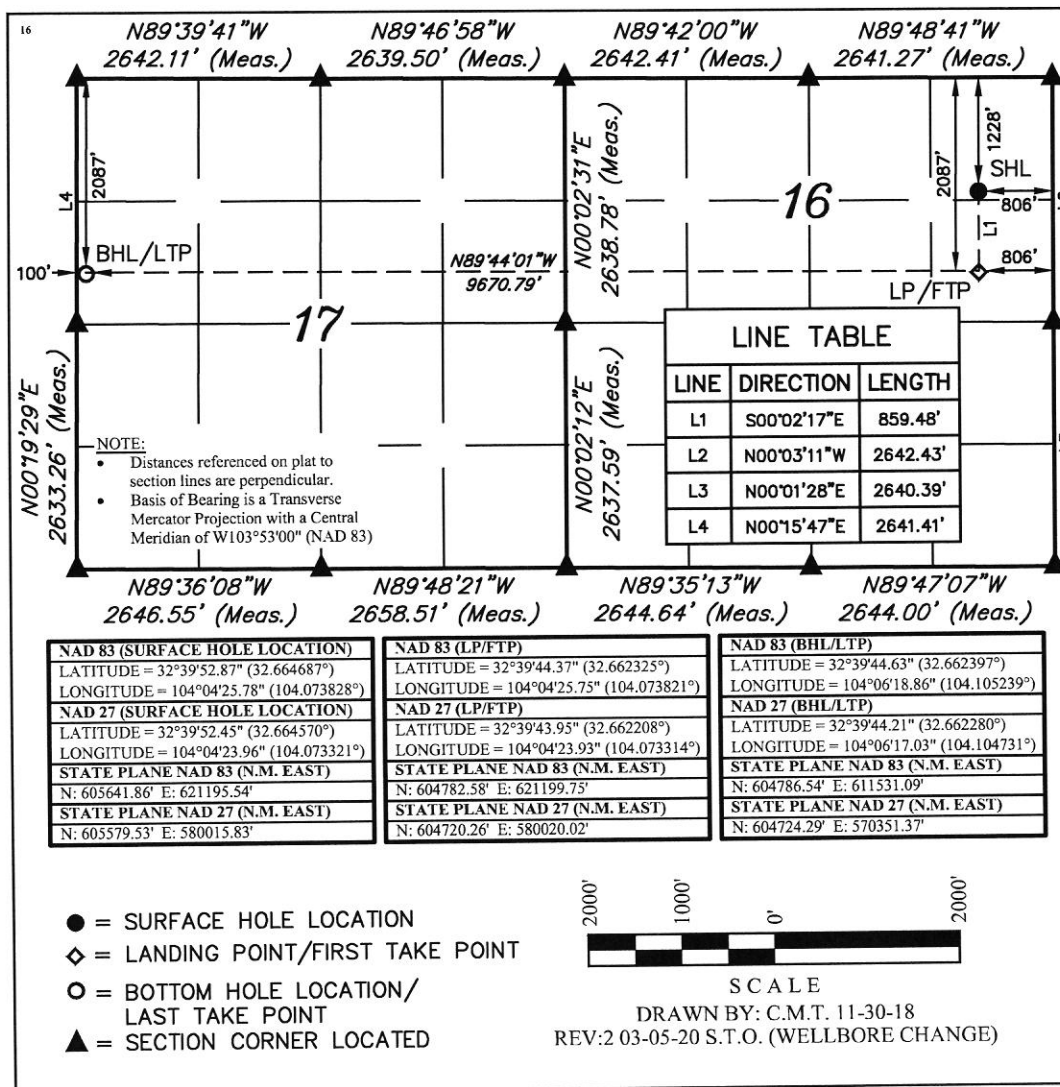
¹⁰ Surface Location

UL or lot no. A	Section 16	Township 19S	Range 29E	Lot Idn	Feet from the 1228	North/South line NORTH	Feet from the 806	East/West line EAST	County EDDY
--------------------	---------------	-----------------	--------------	---------	-----------------------	---------------------------	----------------------	------------------------	----------------

¹¹ Bottom Hole Location If Different From Surface

UL or lot no. E	Section 17	Township 19S	Range 29E	Lot Idn	Feet from the 2087	North/South line NORTH	Feet from the 100	East/West line WEST	County EDDY
¹² Dedicated Acres	¹³ Joint or Infill	¹⁴ Consolidation Code	¹⁵ Order No.						

No allowable will be assigned to this completion until all interests have been consolidated or a non-standard unit has been approved by the division.



¹⁷ OPERATOR
CERTIFICATION

I hereby certify that the information contained herein is true and complete to the best of my knowledge and belief, and that this organization either owns a working interest or unleased mineral interest in the land including the proposed bottom hole location or has a right to drill this well at this location pursuant to a contract with an owner of such a mineral or working interest, or to a voluntary pooling agreement or a compulsory pooling order heretofore entered by the division.

Signature _____ Date _____

Printed Name _____

E-mail Address _____

¹⁸ SURVEYOR
CERTIFICATION

I hereby certify that the well location shown on this plat was plotted from field notes of actual surveys made by me or under my supervision, and that the same is true and correct to the best of my belief.

November 21, 2018

Date of Survey _____
Signature and Seal of Professional Surveyor:



Certificate Number: _____



March 12, 2020

Nuevo Seis Limited Partnership
P.O. Box 2588
Roswell, NM 88202

Re: Statement of Estimated Well Costs
Parkway 16-17 State Com 2H
S/2N/2 Sections 16 and 17, Township 19 South, Range 29 East
Eddy County, New Mexico

Dear Pooled Working Interest Owner,

Pursuant to Order No. R-21035, ¶10 of the New Mexico Oil Conservation Division, Cimarex Energy Co. hereby submits its estimated schedule of the cost of drilling, completing and equipping its Parkway 16-17 State Com 2H well, which have materially decreased since the original well proposal sent on January 31, 2019. This statement reflects Cimarex's updated engineering plan for drilling for the well, which will shift the intended BHL from 2060 feet from the North line of Section 17 to 2087 feet from the North, but did not materially change the estimated cost for drilling, completing and equipping the well.

Please call the undersigned with any questions or comments.

Respectfully,

A handwritten signature in black ink, appearing to read "Riley Morris". The signature is fluid and cursive, with a horizontal line above the first few letters.

Riley Morris
432-620-1966

cc: Florene Davidson, NMOCD

District I
1625 N. French Dr., Hobbs, NM 88240
Phone: (575) 393-6161 Fax: (575) 393-0720
District II
811 S. First St., Artesia, NM 88210
Phone: (575) 748-1283 Fax: (575) 748-9720
District III
1000 Rio Brazos Road, Aztec, NM 87410
Phone: (505) 334-6178 Fax: (505) 334-6170
District IV
1220 S. St. Francis Dr., Santa Fe, NM 87505
Phone: (505) 476-3460 Fax: (505) 476-3462

State of New Mexico
Energy, Minerals & Natural Resources Department
OIL CONSERVATION DIVISION
1220 South St. Francis Dr.
Santa Fe, NM 87505

Form C-102
Revised August 1, 2011
Submit one copy to appropriate
District Office

☐ AMENDED REPORT

WELL LOCATION AND ACREAGE DEDICATION PLAT

¹ API Number	² Pool Code	³ Pool Name
⁴ Property Code	⁵ Property Name PARKWAY 16-17 STATE COM	⁶ Well Number 2H
⁷ OGRID No.	⁸ Operator Name CIMAREX ENERGY CO.	⁹ Elevation 3349.1'

¹⁰ Surface Location

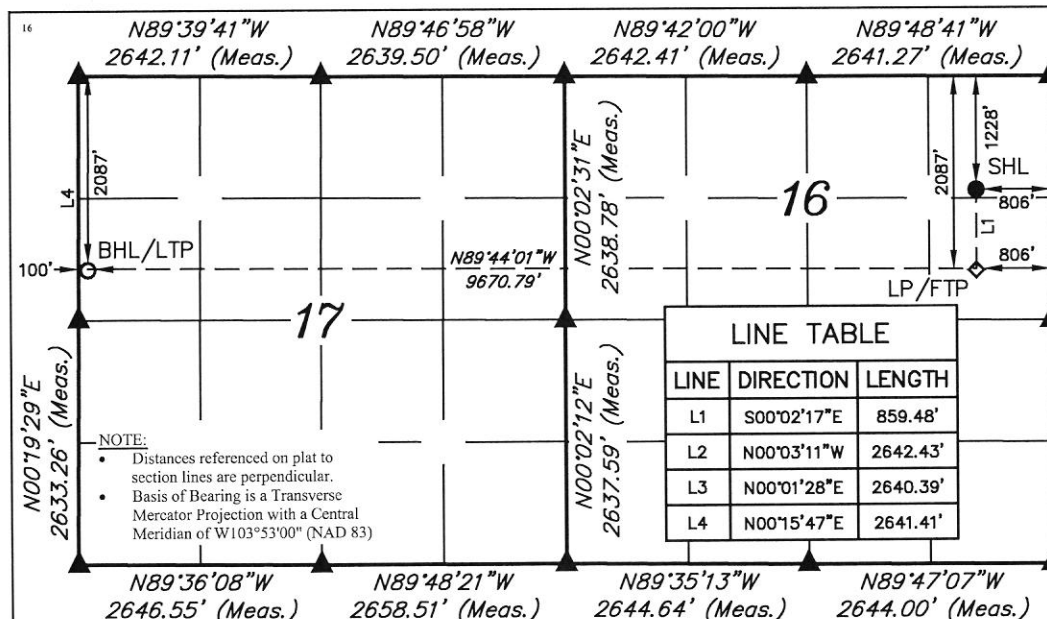
UL or lot no. A	Section 16	Township 19S	Range 29E	Lot Idn	Feet from the 1228	North/South line NORTH	Feet from the 806	East/West line EAST	County EDDY
--------------------	---------------	-----------------	--------------	---------	-----------------------	---------------------------	----------------------	------------------------	----------------

¹¹ Bottom Hole Location If Different From Surface

UL or lot no. E	Section 17	Township 19S	Range 29E	Lot Idn	Feet from the 2087	North/South line NORTH	Feet from the 100	East/West line WEST	County EDDY
--------------------	---------------	-----------------	--------------	---------	-----------------------	---------------------------	----------------------	------------------------	----------------

¹² Dedicated Acres	¹³ Joint or Infill	¹⁴ Consolidation Code	¹⁵ Order No.
-------------------------------	-------------------------------	----------------------------------	-------------------------

No allowable will be assigned to this completion until all interests have been consolidated or a non-standard unit has been approved by the division.



¹⁷ OPERATOR
CERTIFICATION

I hereby certify that the information contained herein is true and complete to the best of my knowledge and belief, and that this organization either owns a working interest or unleased mineral interest in the land including the proposed bottom hole location or has a right to drill this well at this location pursuant to a contract with an owner of such a mineral or working interest, or to a voluntary pooling agreement or a compulsory pooling order heretofore entered by the division.

Signature _____ Date _____

Printed Name _____

E-mail Address _____

¹⁸ SURVEYOR
CERTIFICATION

I hereby certify that the well location shown on this plat was plotted from field notes of actual surveys made by me or under my supervision, and that the same is true and correct to the best of my belief.

November 21, 2018

Date of Survey
Signature and Seal of Professional Surveyor:



Certificate Number:

NAD 83 (SURFACE HOLE LOCATION) LATITUDE = 32°39'52.87" (32.664687°) LONGITUDE = 104°04'25.78" (104.073828°)	NAD 83 (LP/FTP) LATITUDE = 32°39'44.37" (32.662325°) LONGITUDE = 104°04'25.75" (104.073821°)	NAD 83 (BHL/LTP) LATITUDE = 32°39'44.63" (32.662397°) LONGITUDE = 104°06'18.86" (104.105239°)
NAD 27 (SURFACE HOLE LOCATION) LATITUDE = 32°39'52.45" (32.664570°) LONGITUDE = 104°04'23.96" (104.073321°)	NAD 27 (LP/FTP) LATITUDE = 32°39'43.95" (32.662208°) LONGITUDE = 104°04'23.93" (104.073314°)	NAD 27 (BHL/LTP) LATITUDE = 32°39'44.21" (32.662280°) LONGITUDE = 104°06'17.03" (104.104731°)
STATE PLANE NAD 83 (N.M. EAST) N: 605641.86' E: 621195.54'	STATE PLANE NAD 83 (N.M. EAST) N: 604782.58' E: 621199.75'	STATE PLANE NAD 83 (N.M. EAST) N: 604786.54' E: 611531.09'
STATE PLANE NAD 27 (N.M. EAST) N: 605579.53' E: 580015.83'	STATE PLANE NAD 27 (N.M. EAST) N: 604720.26' E: 580020.02'	STATE PLANE NAD 27 (N.M. EAST) N: 604724.29' E: 570351.37'

- = SURFACE HOLE LOCATION
- ◇ = LANDING POINT/FIRST TAKE POINT
- = BOTTOM HOLE LOCATION/
LAST TAKE POINT
- ▲ = SECTION CORNER LOCATED



SCALE
DRAWN BY: C.M.T. 11-30-18
REV:2 03-05-20 S.T.O. (WELLBORE CHANGE)



March 12, 2020

COG Operating LLC
Attn: Outside Operated Properties
600 W. Illinois Avenue
Midland, Texas 79701

Re: Statement of Estimated Well Costs
Parkway 16-17 State Com 2H
S/2N/2 Sections 16 and 17, Township 19 South, Range 29 East
Eddy County, New Mexico

Dear Pooled Working Interest Owner,

Pursuant to Order No. R-21035, ¶10 of the New Mexico Oil Conservation Division, Cimarex Energy Co. hereby submits its estimated schedule of the cost of drilling, completing and equipping its Parkway 16-17 State Com 2H well, which have materially decreased since the original well proposal sent on January 31, 2019. This statement reflects Cimarex's updated engineering plan for drilling for the well, which will shift the intended BHL from 2060 feet from the North line of Section 17 to 2087 feet from the North, but did not materially change the estimated cost for drilling, completing and equipping the well.

Please call the undersigned with any questions or comments.

Respectfully,

A handwritten signature in black ink, appearing to read "Riley Morris". The signature is fluid and cursive, with a long horizontal stroke at the end.

Riley Morris
432-620-1966

cc: Florene Davidson, NMOCD

District I
1625 N. French Dr., Hobbs, NM 88240
Phone: (575) 393-6161 Fax: (575) 393-0720
District II
811 S. First St., Artesia, NM 88210
Phone: (575) 748-1283 Fax: (575) 748-9720
District III
1000 Rio Brazos Road, Aztec, NM 87410
Phone: (505) 334-6178 Fax: (505) 334-6170
District IV
1220 S. St. Francis Dr., Santa Fe, NM 87505
Phone: (505) 476-3460 Fax: (505) 476-3462

State of New Mexico
Energy, Minerals & Natural Resources Department
OIL CONSERVATION DIVISION
1220 South St. Francis Dr.
Santa Fe, NM 87505

Form C-102
Revised August 1, 2011
Submit one copy to appropriate
District Office

☐ AMENDED REPORT

WELL LOCATION AND ACREAGE DEDICATION PLAT

¹ API Number	² Pool Code	³ Pool Name
⁴ Property Code	⁵ Property Name PARKWAY 16-17 STATE COM	⁶ Well Number 2H
⁷ OGRID No.	⁸ Operator Name CIMAREX ENERGY CO.	⁹ Elevation 3349.1'

¹⁰ Surface Location

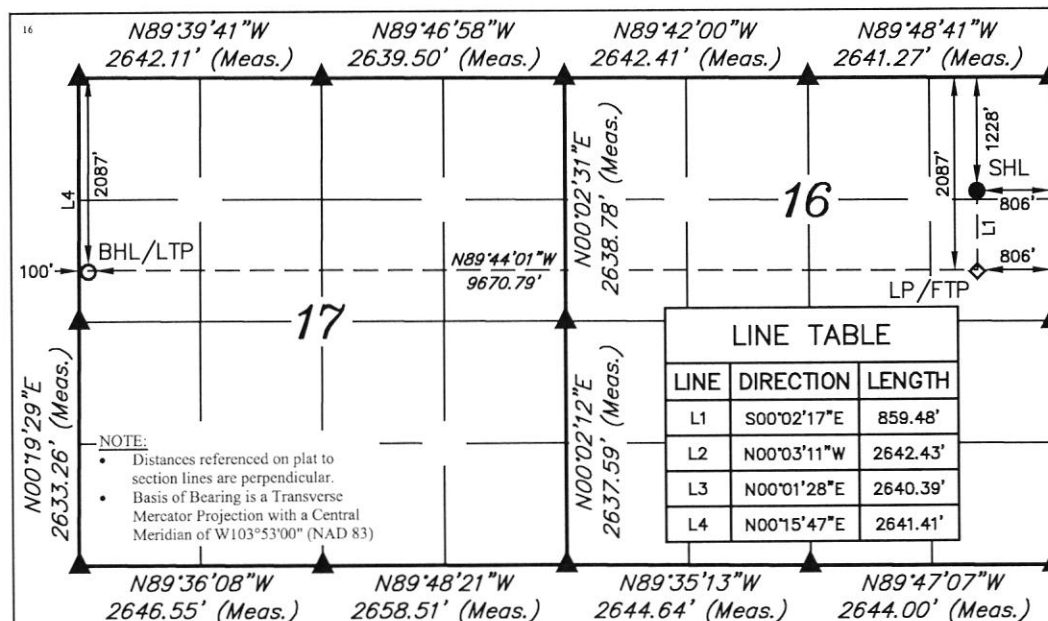
UL or lot no. A	Section 16	Township 19S	Range 29E	Lot Idn	Feet from the 1228	North/South line NORTH	Feet from the 806	East/West line EAST	County EDDY
--------------------	---------------	-----------------	--------------	---------	-----------------------	---------------------------	----------------------	------------------------	----------------

¹¹ Bottom Hole Location If Different From Surface

UL or lot no. E	Section 17	Township 19S	Range 29E	Lot Idn	Feet from the 2087	North/South line NORTH	Feet from the 100	East/West line WEST	County EDDY
--------------------	---------------	-----------------	--------------	---------	-----------------------	---------------------------	----------------------	------------------------	----------------

¹² Dedicated Acres	¹³ Joint or Infill	¹⁴ Consolidation Code	¹⁵ Order No.
-------------------------------	-------------------------------	----------------------------------	-------------------------

No allowable will be assigned to this completion until all interests have been consolidated or a non-standard unit has been approved by the division.



¹⁷ OPERATOR
CERTIFICATION

I hereby certify that the information contained herein is true and complete to the best of my knowledge and belief, and that this organization either owns a working interest or unleased mineral interest in the land including the proposed bottom hole location or has a right to drill this well at this location pursuant to a contract with an owner of such a mineral or working interest, or to a voluntary pooling agreement or a compulsory pooling order heretofore entered by the division.

Signature _____ Date _____

Printed Name _____

E-mail Address _____

¹⁸ SURVEYOR
CERTIFICATION

I hereby certify that the well location shown on this plat was plotted from field notes of actual surveys made by me or under my supervision, and that the same is true and correct to the best of my belief.

November 21, 2018

Date of Survey
Signature and Seal of Professional Surveyor:



Certificate Number: _____

NAD 83 (SURFACE HOLE LOCATION) LATITUDE = 32°39'52.87" (32.664687°) LONGITUDE = 104°04'25.78" (104.073828°)	NAD 83 (LP/FTP) LATITUDE = 32°39'44.37" (32.662325°) LONGITUDE = 104°04'25.75" (104.073821°)	NAD 83 (BHL/LTP) LATITUDE = 32°39'44.63" (32.662397°) LONGITUDE = 104°06'18.86" (104.105239°)
NAD 27 (SURFACE HOLE LOCATION) LATITUDE = 32°39'52.45" (32.664570°) LONGITUDE = 104°04'23.96" (104.073321°)	NAD 27 (LP/FTP) LATITUDE = 32°39'43.95" (32.662208°) LONGITUDE = 104°04'23.93" (104.073314°)	NAD 27 (BHL/LTP) LATITUDE = 32°39'44.21" (32.662280°) LONGITUDE = 104°06'17.03" (104.104731°)
STATE PLANE NAD 83 (N.M. EAST) N: 605641.86' E: 621195.54'	STATE PLANE NAD 83 (N.M. EAST) N: 604782.58' E: 621199.75'	STATE PLANE NAD 83 (N.M. EAST) N: 604786.54' E: 611531.09'
STATE PLANE NAD 27 (N.M. EAST) N: 605579.53' E: 580015.83'	STATE PLANE NAD 27 (N.M. EAST) N: 604720.26' E: 580020.02'	STATE PLANE NAD 27 (N.M. EAST) N: 604724.29' E: 570351.37'

- = SURFACE HOLE LOCATION
- ◇ = LANDING POINT/FIRST TAKE POINT
- = BOTTOM HOLE LOCATION/
LAST TAKE POINT
- ▲ = SECTION CORNER LOCATED



SCALE

DRAWN BY: C.M.T. 11-30-18

REV: 2 03-05-20 S.T.O. (WELLBORE CHANGE)



March 12, 2020

Concho Oil & Gas, LLC
Attn: Outside Operated Properties
600 W. Illinois Avenue
Midland, Texas 79701

Re: Statement of Estimated Well Costs
Parkway 16-17 State Com 2H
S/2N/2 Sections 16 and 17, Township 19 South, Range 29 East
Eddy County, New Mexico

Dear Pooled Working Interest Owner,

Pursuant to Order No. R-21035, ¶10 of the New Mexico Oil Conservation Division, Cimarex Energy Co. hereby submits its estimated schedule of the cost of drilling, completing and equipping its Parkway 16-17 State Com 2H well, which have materially decreased since the original well proposal sent on January 31, 2019. This statement reflects Cimarex's updated engineering plan for drilling for the well, which will shift the intended BHL from 2060 feet from the North line of Section 17 to 2087 feet from the North, but did not materially change the estimated cost for drilling, completing and equipping the well.

Please call the undersigned with any questions or comments.

Respectfully,

A handwritten signature in black ink, appearing to read "Riley Morris". The signature is fluid and cursive, with a long horizontal stroke extending to the left.

Riley Morris
432-620-1966

cc: Florene Davidson, NMOCD

District I
1625 N. French Dr., Hobbs, NM 88240
Phone: (575) 393-6161 Fax: (575) 393-0720
District II
811 S. First St., Artesia, NM 88210
Phone: (575) 748-1283 Fax: (575) 748-9720
District III
1000 Rio Brazos Road, Aztec, NM 87410
Phone: (505) 334-6178 Fax: (505) 334-6170
District IV
1220 S. St. Francis Dr., Santa Fe, NM 87505
Phone: (505) 476-3460 Fax: (505) 476-3462

State of New Mexico
Energy, Minerals & Natural Resources Department
OIL CONSERVATION DIVISION
1220 South St. Francis Dr.
Santa Fe, NM 87505

Form C-102
Revised August 1, 2011
Submit one copy to appropriate
District Office

☐ AMENDED REPORT

WELL LOCATION AND ACREAGE DEDICATION PLAT

¹ API Number	² Pool Code	³ Pool Name
⁴ Property Code	⁵ Property Name PARKWAY 16-17 STATE COM	⁶ Well Number 2H
⁷ OGRID No.	⁸ Operator Name CIMAREX ENERGY CO.	⁹ Elevation 3349.1'

¹⁰ Surface Location

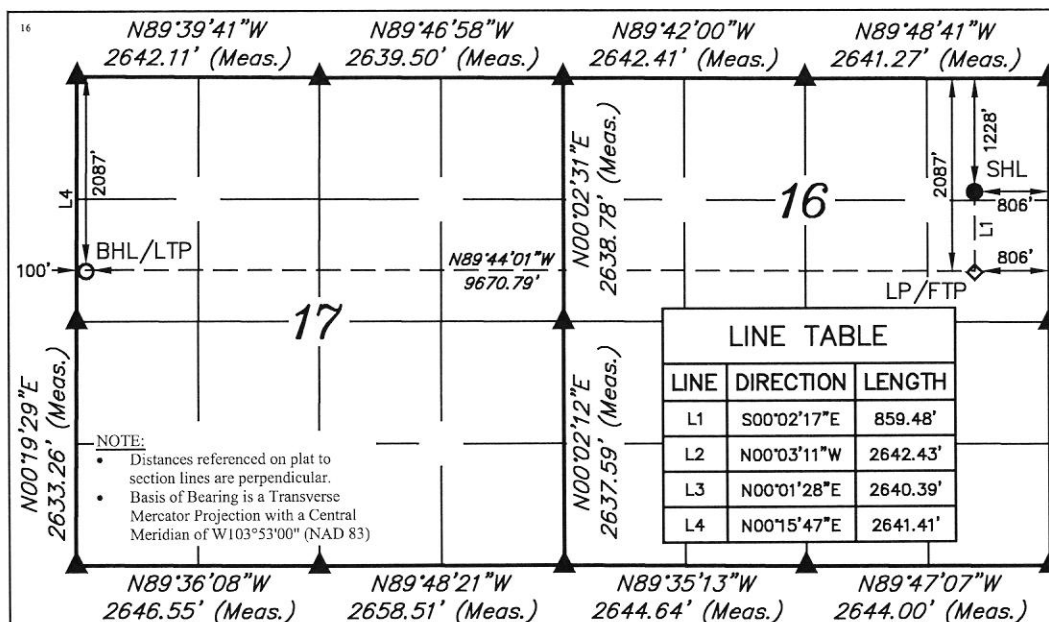
UL or lot no. A	Section 16	Township 19S	Range 29E	Lot Idn	Feet from the 1228	North/South line NORTH	Feet from the 806	East/West line EAST	County EDDY
--------------------	---------------	-----------------	--------------	---------	-----------------------	---------------------------	----------------------	------------------------	----------------

¹¹ Bottom Hole Location If Different From Surface

UL or lot no. E	Section 17	Township 19S	Range 29E	Lot Idn	Feet from the 2087	North/South line NORTH	Feet from the 100	East/West line WEST	County EDDY
--------------------	---------------	-----------------	--------------	---------	-----------------------	---------------------------	----------------------	------------------------	----------------

¹² Dedicated Acres	¹³ Joint or Infill	¹⁴ Consolidation Code	¹⁵ Order No.
-------------------------------	-------------------------------	----------------------------------	-------------------------

No allowable will be assigned to this completion until all interests have been consolidated or a non-standard unit has been approved by the division.



¹⁷ OPERATOR
CERTIFICATION

I hereby certify that the information contained herein is true and complete to the best of my knowledge and belief, and that this organization either owns a working interest or unleased mineral interest in the land including the proposed bottom hole location or has a right to drill this well at this location pursuant to a contract with an owner of such a mineral or working interest, or to a voluntary pooling agreement or a compulsory pooling order heretofore entered by the division.

Signature _____ Date _____

Printed Name _____

E-mail Address _____

¹⁸ SURVEYOR
CERTIFICATION

I hereby certify that the well location shown on this plat was plotted from field notes of actual surveys made by me or under my supervision, and that the same is true and correct to the best of my belief.

November 21, 2018

Date of Survey
Signature and Seal of Professional Surveyor:



Certificate Number:

NAD 83 (SURFACE HOLE LOCATION) LATITUDE = 32°39'52.87" (32.664687°) LONGITUDE = 104°04'25.78" (104.073828°)	NAD 83 (LP/FTP) LATITUDE = 32°39'44.37" (32.662325°) LONGITUDE = 104°04'25.75" (104.073821°)	NAD 83 (BHL/LTP) LATITUDE = 32°39'44.63" (32.662397°) LONGITUDE = 104°06'18.86" (104.105239°)
NAD 27 (SURFACE HOLE LOCATION) LATITUDE = 32°39'52.45" (32.664570°) LONGITUDE = 104°04'23.96" (104.073321°)	NAD 27 (LP/FTP) LATITUDE = 32°39'43.95" (32.662208°) LONGITUDE = 104°04'23.93" (104.073314°)	NAD 27 (BHL/LTP) LATITUDE = 32°39'44.21" (32.662280°) LONGITUDE = 104°06'17.03" (104.104731°)
STATE PLANE NAD 83 (N.M. EAST) N: 605641.86' E: 621195.54'	STATE PLANE NAD 83 (N.M. EAST) N: 604782.58' E: 621199.75'	STATE PLANE NAD 83 (N.M. EAST) N: 604786.54' E: 611531.09'
STATE PLANE NAD 27 (N.M. EAST) N: 605579.53' E: 580015.83'	STATE PLANE NAD 27 (N.M. EAST) N: 604720.26' E: 580020.02'	STATE PLANE NAD 27 (N.M. EAST) N: 604724.29' E: 570351.37'

- = SURFACE HOLE LOCATION
- ◆ = LANDING POINT/FIRST TAKE POINT
- = BOTTOM HOLE LOCATION/
LAST TAKE POINT
- ▲ = SECTION CORNER LOCATED



SCALE

DRAWN BY: C.M.T. 11-30-18

REV:2 03-05-20 S.T.O. (WELLBORE CHANGE)



March 12, 2020

Marathon Oil Permian, LLC
5555 San Felipe St.
Houston, TX 77056

Re: Statement of Estimated Well Costs
Parkway 16-17 State Com 2H
S/2N/2 Sections 16 and 17, Township 19 South, Range 29 East
Eddy County, New Mexico

Dear Pooled Working Interest Owner,

Pursuant to Order No. R-21035, ¶10 of the New Mexico Oil Conservation Division, Cimarex Energy Co. hereby submits its estimated schedule of the cost of drilling, completing and equipping its Parkway 16-17 State Com 2H well, which have materially decreased since the original well proposal sent on January 31, 2019. This statement reflects Cimarex's updated engineering plan for drilling for the well, which will shift the intended BHL from 2060 feet from the North line of Section 17 to 2087 feet from the North, but did not materially change the estimated cost for drilling, completing and equipping the well.

Please call the undersigned with any questions or comments.

Respectfully,

A handwritten signature in black ink, appearing to read "Riley Morris". The signature is fluid and cursive, with a long horizontal stroke extending to the right.

Riley Morris
432-620-1966

cc: Florene Davidson, NMOCD

District I
1625 N. French Dr., Hobbs, NM 88240
Phone: (575) 393-6161 Fax: (575) 393-0720
District II
811 S. First St., Artesia, NM 88210
Phone: (575) 748-1283 Fax: (575) 748-9720
District III
1000 Rio Brazos Road, Aztec, NM 87410
Phone: (505) 334-6178 Fax: (505) 334-6170
District IV
1220 S. St. Francis Dr., Santa Fe, NM 87505
Phone: (505) 476-3460 Fax: (505) 476-3462

State of New Mexico
Energy, Minerals & Natural Resources Department
OIL CONSERVATION DIVISION
1220 South St. Francis Dr.
Santa Fe, NM 87505

Form C-102
Revised August 1, 2011
Submit one copy to appropriate
District Office

☐ AMENDED REPORT

WELL LOCATION AND ACREAGE DEDICATION PLAT

¹ API Number	² Pool Code	³ Pool Name
⁴ Property Code	⁵ Property Name PARKWAY 16-17 STATE COM	⁶ Well Number 2H
⁷ OGRID No.	⁸ Operator Name CIMAREX ENERGY CO.	⁹ Elevation 3349.1'

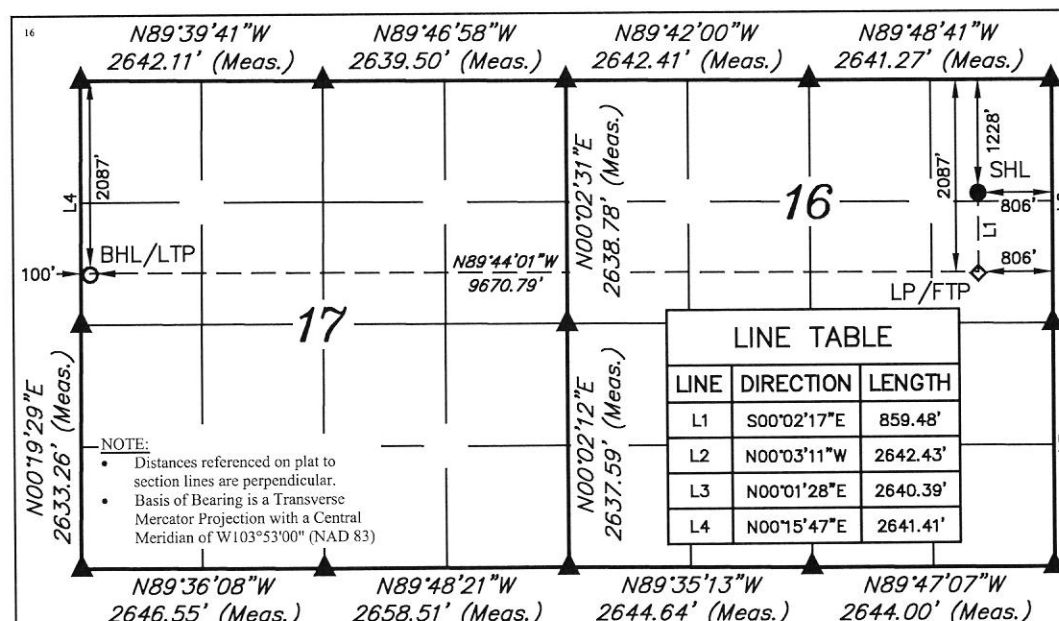
¹⁰ Surface Location

UL or lot no. A	Section 16	Township 19S	Range 29E	Lot Idn	Feet from the 1228	North/South line NORTH	Feet from the 806	East/West line EAST	County EDDY
--------------------	---------------	-----------------	--------------	---------	-----------------------	---------------------------	----------------------	------------------------	----------------

¹¹ Bottom Hole Location If Different From Surface

UL or lot no. E	Section 17	Township 19S	Range 29E	Lot Idn	Feet from the 2087	North/South line NORTH	Feet from the 100	East/West line WEST	County EDDY
¹² Dedicated Acres	¹³ Joint or Infill	¹⁴ Consolidation Code	¹⁵ Order No.						

No allowable will be assigned to this completion until all interests have been consolidated or a non-standard unit has been approved by the division.



¹⁷ OPERATOR
CERTIFICATION

I hereby certify that the information contained herein is true and complete to the best of my knowledge and belief, and that this organization either owns a working interest or unleased mineral interest in the land including the proposed bottom hole location or has a right to drill this well at this location pursuant to a contract with an owner of such a mineral or working interest, or to a voluntary pooling agreement or a compulsory pooling order heretofore entered by the division.

Signature _____ Date _____

Printed Name _____

E-mail Address _____

¹⁸ SURVEYOR
CERTIFICATION

I hereby certify that the well location shown on this plat was plotted from field notes of actual surveys made by me or under my supervision, and that the same is true and correct to the best of my belief.

November 21, 2018

Date of Survey _____
Signature and Seal of Professional Surveyor: _____



Certificate Number: _____

NAD 83 (SURFACE HOLE LOCATION) LATITUDE = 32°39'52.87" (32.664687°) LONGITUDE = 104°04'25.78" (104.073828°)	NAD 83 (LP/FTP) LATITUDE = 32°39'44.37" (32.662325°) LONGITUDE = 104°04'25.75" (104.073821°)	NAD 83 (BHL/LTP) LATITUDE = 32°39'44.63" (32.662397°) LONGITUDE = 104°06'18.86" (104.105239°)
NAD 27 (SURFACE HOLE LOCATION) LATITUDE = 32°39'52.45" (32.664570°) LONGITUDE = 104°04'23.96" (104.073321°)	NAD 27 (LP/FTP) LATITUDE = 32°39'43.95" (32.662208°) LONGITUDE = 104°04'23.93" (104.073314°)	NAD 27 (BHL/LTP) LATITUDE = 32°39'44.21" (32.662280°) LONGITUDE = 104°06'17.03" (104.104731°)
STATE PLANE NAD 83 (N.M. EAST) N: 605641.86' E: 621195.54'	STATE PLANE NAD 83 (N.M. EAST) N: 604782.58' E: 621199.75'	STATE PLANE NAD 83 (N.M. EAST) N: 604786.54' E: 611531.09'
STATE PLANE NAD 27 (N.M. EAST) N: 605579.53' E: 580015.83'	STATE PLANE NAD 27 (N.M. EAST) N: 604720.26' E: 580020.02'	STATE PLANE NAD 27 (N.M. EAST) N: 604724.29' E: 570351.37'

- = SURFACE HOLE LOCATION
- ◇ = LANDING POINT/FIRST TAKE POINT
- = BOTTOM HOLE LOCATION/
LAST TAKE POINT
- ▲ = SECTION CORNER LOCATED



SCALE

DRAWN BY: C.M.T. 11-30-18
REV: 2 03-05-20 S.T.O. (WELLBORE CHANGE)



March 12, 2020

Crump Energy Partners III, LLC
P.O. Box 50820
Midland, TX 79711

Re: Statement of Estimated Well Costs
Parkway 16-17 State Com 2H
S/2N/2 Sections 16 and 17, Township 19 South, Range 29 East
Eddy County, New Mexico

Dear Pooled Working Interest Owner,

Pursuant to Order No. R-21035, ¶10 of the New Mexico Oil Conservation Division, Cimarex Energy Co. hereby submits its estimated schedule of the cost of drilling, completing and equipping its Parkway 16-17 State Com 2H well, which have materially decreased since the original well proposal sent on January 31, 2019. This statement reflects Cimarex's updated engineering plan for drilling for the well, which will shift the intended BHL from 2060 feet from the North line of Section 17 to 2087 feet from the North, but did not materially change the estimated cost for drilling, completing and equipping the well.

Please call the undersigned with any questions or comments.

Respectfully,

A handwritten signature in black ink, appearing to read "Riley Morris". The signature is fluid and cursive, with a long horizontal stroke extending to the right.

Riley Morris
432-620-1966

cc: Florene Davidson, NMOCD

District I
1625 N. French Dr., Hobbs, NM 88240
Phone: (575) 393-6161 Fax: (575) 393-0720
District II
811 S. First St., Artesia, NM 88210
Phone: (575) 748-1283 Fax: (575) 748-9720
District III
1000 Rio Brazos Road, Aztec, NM 87410
Phone: (505) 334-6178 Fax: (505) 334-6170
District IV
1220 S. St. Francis Dr., Santa Fe, NM 87505
Phone: (505) 476-3460 Fax: (505) 476-3462

State of New Mexico
Energy, Minerals & Natural Resources Department
OIL CONSERVATION DIVISION
1220 South St. Francis Dr.
Santa Fe, NM 87505

Form C-102
Revised August 1, 2011
Submit one copy to appropriate
District Office

☐ AMENDED REPORT

WELL LOCATION AND ACREAGE DEDICATION PLAT

¹ API Number	² Pool Code	³ Pool Name
⁴ Property Code	⁵ Property Name PARKWAY 16-17 STATE COM	⁶ Well Number 2H
⁷ OGRID No.	⁸ Operator Name CIMAREX ENERGY CO.	⁹ Elevation 3349.1'

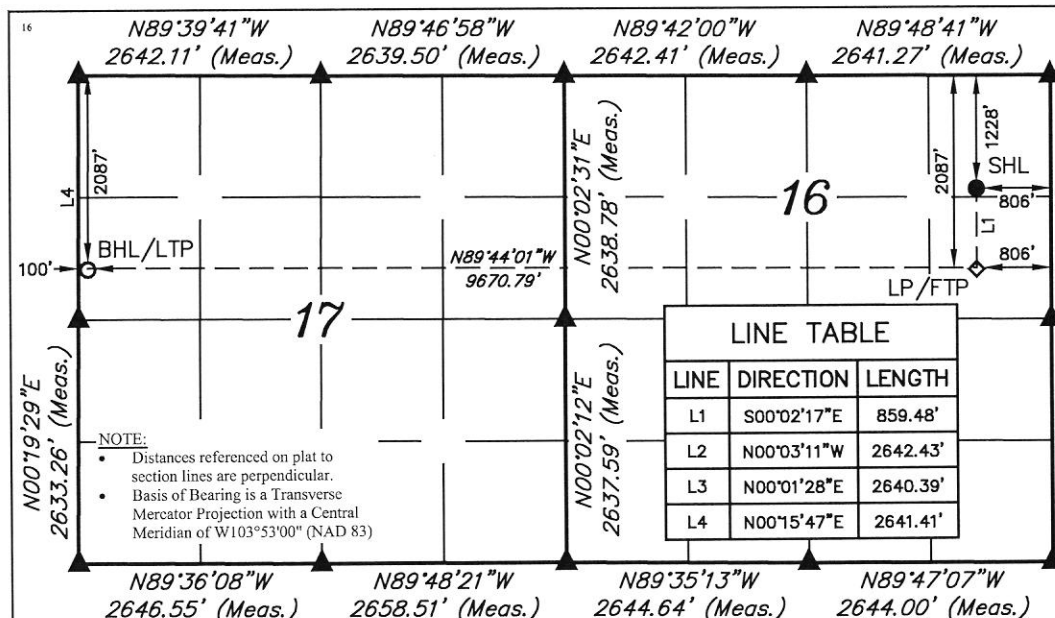
¹⁰ Surface Location

UL or lot no. A	Section 16	Township 19S	Range 29E	Lot Idn	Feet from the 1228	North/South line NORTH	Feet from the 806	East/West line EAST	County EDDY
--------------------	---------------	-----------------	--------------	---------	-----------------------	---------------------------	----------------------	------------------------	----------------

¹¹ Bottom Hole Location If Different From Surface

UL or lot no. E	Section 17	Township 19S	Range 29E	Lot Idn	Feet from the 2087	North/South line NORTH	Feet from the 100	East/West line WEST	County EDDY
¹² Dedicated Acres	¹³ Joint or Infill	¹⁴ Consolidation Code	¹⁵ Order No.						

No allowable will be assigned to this completion until all interests have been consolidated or a non-standard unit has been approved by the division.



¹⁷ OPERATOR
CERTIFICATION

I hereby certify that the information contained herein is true and complete to the best of my knowledge and belief, and that this organization either owns a working interest or unleased mineral interest in the land including the proposed bottom hole location or has a right to drill this well at this location pursuant to a contract with an owner of such a mineral or working interest, or to a voluntary pooling agreement or a compulsory pooling order heretofore entered by the division.

Signature _____ Date _____

Printed Name _____

E-mail Address _____

¹⁸ SURVEYOR
CERTIFICATION

I hereby certify that the well location shown on this plat was plotted from field notes of actual surveys made by me or under my supervision, and that the same is true and correct to the best of my belief.

November 21, 2018

Date of Survey
Signature and Seal of Professional Surveyor:



Certificate Number:

NAD 83 (SURFACE HOLE LOCATION) LATITUDE = 32°39'52.87" (32.664687°) LONGITUDE = 104°04'25.78" (104.073828°)	NAD 83 (LP/FTP) LATITUDE = 32°39'44.37" (32.662325°) LONGITUDE = 104°04'25.75" (104.073821°)	NAD 83 (BHL/LTP) LATITUDE = 32°39'44.63" (32.662397°) LONGITUDE = 104°06'18.86" (104.105239°)
NAD 27 (SURFACE HOLE LOCATION) LATITUDE = 32°39'52.45" (32.664570°) LONGITUDE = 104°04'23.96" (104.073321°)	NAD 27 (LP/FTP) LATITUDE = 32°39'43.95" (32.662208°) LONGITUDE = 104°04'23.93" (104.073314°)	NAD 27 (BHL/LTP) LATITUDE = 32°39'44.21" (32.662280°) LONGITUDE = 104°06'17.03" (104.104731°)
STATE PLANE NAD 83 (N.M. EAST) N: 605641.86' E: 621195.54'	STATE PLANE NAD 83 (N.M. EAST) N: 604782.58' E: 621199.75'	STATE PLANE NAD 83 (N.M. EAST) N: 604786.54' E: 611531.09'
STATE PLANE NAD 27 (N.M. EAST) N: 605579.53' E: 580015.83'	STATE PLANE NAD 27 (N.M. EAST) N: 604720.26' E: 580020.02'	STATE PLANE NAD 27 (N.M. EAST) N: 604724.29' E: 570351.37'

- = SURFACE HOLE LOCATION
- ◆ = LANDING POINT/FIRST TAKE POINT
- = BOTTOM HOLE LOCATION/
LAST TAKE POINT
- ▲ = SECTION CORNER LOCATED



SCALE
DRAWN BY: C.M.T. 11-30-18
REV:2 03-05-20 S.T.O. (WELLBORE CHANGE)



March 12, 2020

Crown Oil Partners VI, LLC
P.O. Box 50820
Midland, TX 79710

Re: Statement of Estimated Well Costs
Parkway 16-17 State Com 2H
S/2N/2 Sections 16 and 17, Township 19 South, Range 29 East
Eddy County, New Mexico

Dear Pooled Working Interest Owner,

Pursuant to Order No. R-21035, ¶10 of the New Mexico Oil Conservation Division, Cimarex Energy Co. hereby submits its estimated schedule of the cost of drilling, completing and equipping its Parkway 16-17 State Com 2H well, which have materially decreased since the original well proposal sent on January 31, 2019. This statement reflects Cimarex's updated engineering plan for drilling for the well, which will shift the intended BHL from 2060 feet from the North line of Section 17 to 2087 feet from the North, but did not materially change the estimated cost for drilling, completing and equipping the well.

Please call the undersigned with any questions or comments.

Respectfully,

A handwritten signature in black ink, appearing to read "Riley Morris". The signature is fluid and cursive, with a long horizontal stroke extending to the right.

Riley Morris
432-620-1966

cc: Florene Davidson, NMOCD

District I
1625 N. French Dr., Hobbs, NM 88240
Phone: (575) 393-6161 Fax: (575) 393-0720
District II
811 S. First St., Artesia, NM 88210
Phone: (575) 748-1283 Fax: (575) 748-9720
District III
1000 Rio Brazos Road, Aztec, NM 87410
Phone: (505) 334-6178 Fax: (505) 334-6170
District IV
1220 S. St. Francis Dr., Santa Fe, NM 87505
Phone: (505) 476-3460 Fax: (505) 476-3462

State of New Mexico
Energy, Minerals & Natural Resources Department
OIL CONSERVATION DIVISION
1220 South St. Francis Dr.
Santa Fe, NM 87505

Form C-102
Revised August 1, 2011
Submit one copy to appropriate
District Office

☐ AMENDED REPORT

WELL LOCATION AND ACREAGE DEDICATION PLAT

¹ API Number	² Pool Code	³ Pool Name
⁴ Property Code	⁵ Property Name PARKWAY 16-17 STATE COM	⁶ Well Number 2H
⁷ OGRID No.	⁸ Operator Name CIMAREX ENERGY CO.	⁹ Elevation 3349.1'

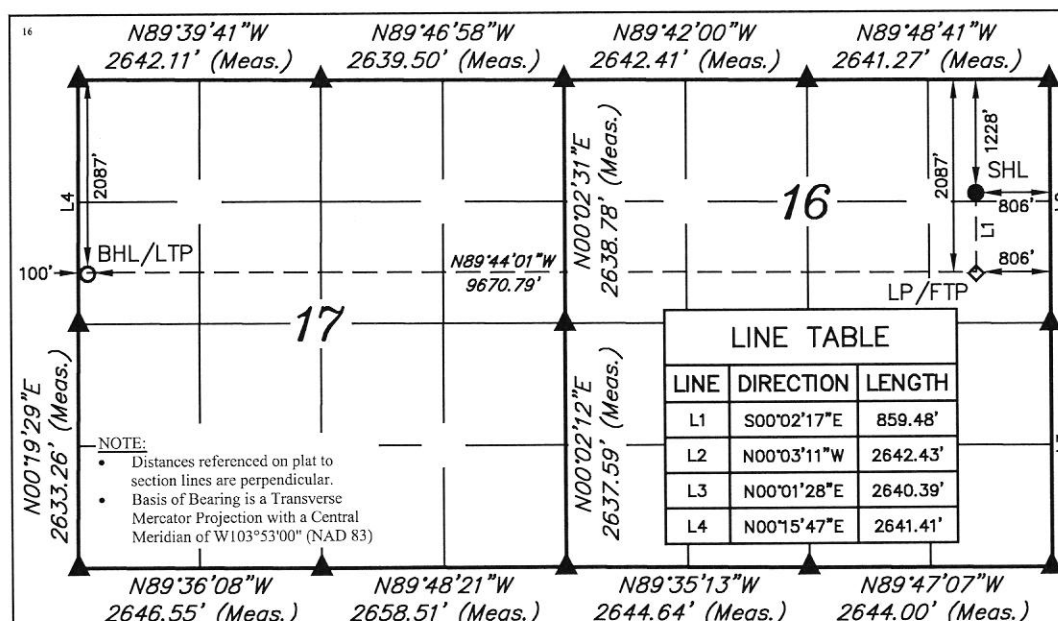
¹⁰ Surface Location

UL or lot no. A	Section 16	Township 19S	Range 29E	Lot Idn	Feet from the 1228	North/South line NORTH	Feet from the 806	East/West line EAST	County EDDY
--------------------	---------------	-----------------	--------------	---------	-----------------------	---------------------------	----------------------	------------------------	----------------

¹¹ Bottom Hole Location If Different From Surface

UL or lot no. E	Section 17	Township 19S	Range 29E	Lot Idn	Feet from the 2087	North/South line NORTH	Feet from the 100	East/West line WEST	County EDDY
¹² Dedicated Acres	¹³ Joint or Infill	¹⁴ Consolidation Code	¹⁵ Order No.						

No allowable will be assigned to this completion until all interests have been consolidated or a non-standard unit has been approved by the division.



¹⁷ OPERATOR CERTIFICATION

I hereby certify that the information contained herein is true and complete to the best of my knowledge and belief, and that this organization either owns a working interest or unleased mineral interest in the land including the proposed bottom hole location or has a right to drill this well at this location pursuant to a contract with an owner of such a mineral or working interest, or to a voluntary pooling agreement or a compulsory pooling order heretofore entered by the division.

Signature _____ Date _____

Printed Name _____

E-mail Address _____

¹⁸ SURVEYOR CERTIFICATION

I hereby certify that the well location shown on this plat was plotted from field notes of actual surveys made by me or under my supervision, and that the same is true and correct to the best of my belief.

November 21, 2018

Date of Survey
Signature and Seal of Professional Surveyor:



Certificate Number:

NAD 83 (SURFACE HOLE LOCATION) LATITUDE = 32°39'52.87" (32.664687°) LONGITUDE = 104°04'25.78" (104.073828°)	NAD 83 (LP/FTP) LATITUDE = 32°39'44.37" (32.662325°) LONGITUDE = 104°04'25.75" (104.073821°)	NAD 83 (BHL/LTP) LATITUDE = 32°39'44.63" (32.662397°) LONGITUDE = 104°06'18.86" (104.105239°)
NAD 27 (SURFACE HOLE LOCATION) LATITUDE = 32°39'52.45" (32.664570°) LONGITUDE = 104°04'23.96" (104.073321°)	NAD 27 (LP/FTP) LATITUDE = 32°39'43.95" (32.662208°) LONGITUDE = 104°04'23.93" (104.073314°)	NAD 27 (BHL/LTP) LATITUDE = 32°39'44.21" (32.662280°) LONGITUDE = 104°06'17.03" (104.104731°)
STATE PLANE NAD 83 (N.M. EAST) N: 605641.86' E: 621195.54'	STATE PLANE NAD 83 (N.M. EAST) N: 604782.58' E: 621199.75'	STATE PLANE NAD 83 (N.M. EAST) N: 604786.54' E: 611531.09'
STATE PLANE NAD 27 (N.M. EAST) N: 605579.53' E: 580015.83'	STATE PLANE NAD 27 (N.M. EAST) N: 604720.26' E: 580020.02'	STATE PLANE NAD 27 (N.M. EAST) N: 604724.29' E: 570351.37'

- = SURFACE HOLE LOCATION
- ◆ = LANDING POINT/FIRST TAKE POINT
- = BOTTOM HOLE LOCATION/LAST TAKE POINT
- ▲ = SECTION CORNER LOCATED



SCALE

DRAWN BY: C.M.T. 11-30-18
REV:2 03-05-20 S.T.O. (WELLBORE CHANGE)



March 12, 2020

Isramco Energy, LLC
1001 West Loop South, Suite 750
Houston, TX 77027

Re: Statement of Estimated Well Costs
Parkway 16-17 State Com 2H
S/2N/2 Sections 16 and 17, Township 19 South, Range 29 East
Eddy County, New Mexico

Dear Pooled Working Interest Owner,

Pursuant to Order No. R-21035, ¶10 of the New Mexico Oil Conservation Division, Cimarex Energy Co. hereby submits its estimated schedule of the cost of drilling, completing and equipping its Parkway 16-17 State Com 2H well, which have materially decreased since the original well proposal sent on January 31, 2019. This statement reflects Cimarex's updated engineering plan for drilling for the well, which will shift the intended BHL from 2060 feet from the North line of Section 17 to 2087 feet from the North, but did not materially change the estimated cost for drilling, completing and equipping the well.

Please call the undersigned with any questions or comments.

Respectfully,

A handwritten signature in black ink, appearing to read "Riley Morris". The signature is stylized with a large, sweeping "R" and a long, horizontal stroke extending to the right.

Riley Morris
432-620-1966

cc: Florene Davidson, NMOCD

District I
1625 N. French Dr., Hobbs, NM 88240
Phone: (575) 393-6161 Fax: (575) 393-0720
District II
811 S. First St., Artesia, NM 88210
Phone: (575) 748-1283 Fax: (575) 748-9720
District III
1000 Rio Brazos Road, Aztec, NM 87410
Phone: (505) 334-6178 Fax: (505) 334-6170
District IV
1220 S. St. Francis Dr., Santa Fe, NM 87505
Phone: (505) 476-3460 Fax: (505) 476-3462

State of New Mexico
Energy, Minerals & Natural Resources Department
OIL CONSERVATION DIVISION
1220 South St. Francis Dr.
Santa Fe, NM 87505

Form C-102
Revised August 1, 2011
Submit one copy to appropriate
District Office

☐ AMENDED REPORT

WELL LOCATION AND ACREAGE DEDICATION PLAT

¹ API Number	² Pool Code	³ Pool Name
⁴ Property Code	⁵ Property Name PARKWAY 16-17 STATE COM	⁶ Well Number 2H
⁷ OGRID No.	⁸ Operator Name CIMAREX ENERGY CO.	⁹ Elevation 3349.1'

¹⁰ Surface Location

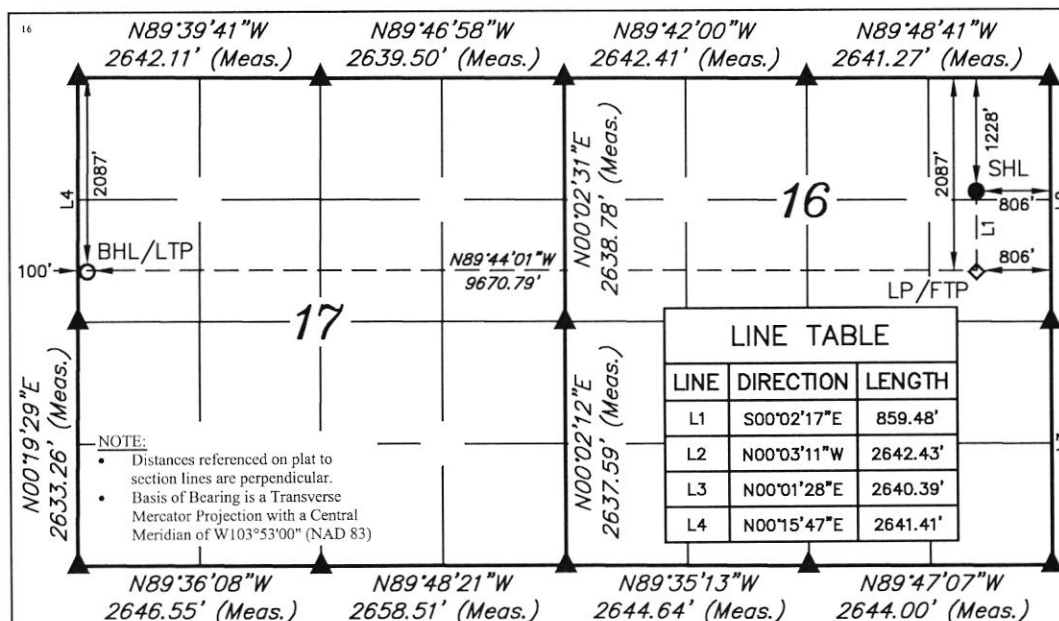
UL or lot no. A	Section 16	Township 19S	Range 29E	Lot Idn	Feet from the 1228	North/South line NORTH	Feet from the 806	East/West line EAST	County EDDY
--------------------	---------------	-----------------	--------------	---------	-----------------------	---------------------------	----------------------	------------------------	----------------

¹¹ Bottom Hole Location If Different From Surface

UL or lot no. E	Section 17	Township 19S	Range 29E	Lot Idn	Feet from the 2087	North/South line NORTH	Feet from the 100	East/West line WEST	County EDDY
--------------------	---------------	-----------------	--------------	---------	-----------------------	---------------------------	----------------------	------------------------	----------------

¹² Dedicated Acres	¹³ Joint or Infill	¹⁴ Consolidation Code	¹⁵ Order No.
-------------------------------	-------------------------------	----------------------------------	-------------------------

No allowable will be assigned to this completion until all interests have been consolidated or a non-standard unit has been approved by the division.



LINE TABLE		
LINE	DIRECTION	LENGTH
L1	S00°02'17"E	859.48'
L2	N00°03'11"W	2642.43'
L3	N00°01'28"E	2640.39'
L4	N00°15'47"E	2641.41'

¹⁷ OPERATOR
CERTIFICATION

I hereby certify that the information contained herein is true and complete to the best of my knowledge and belief, and that this organization either owns a working interest or unleased mineral interest in the land including the proposed bottom hole location or has a right to drill this well at this location pursuant to a contract with an owner of such a mineral or working interest, or to a voluntary pooling agreement or a compulsory pooling order heretofore entered by the division.

Signature _____ Date _____

Printed Name _____

E-mail Address _____

¹⁸ SURVEYOR
CERTIFICATION

I hereby certify that the well location shown on this plat was plotted from field notes of actual surveys made by me or under my supervision, and that the same is true and correct to the best of my belief.

November 21, 2018

Date of Survey
Signature and Seal of Professional Surveyor:



Certificate Number:

NAD 83 (SURFACE HOLE LOCATION) LATITUDE = 32°39'52.87" (32.664687°) LONGITUDE = 104°04'25.78" (104.073828°)	NAD 83 (LP/FTP) LATITUDE = 32°39'44.37" (32.662325°) LONGITUDE = 104°04'25.75" (104.073821°)	NAD 83 (BHL/LTP) LATITUDE = 32°39'44.63" (32.662397°) LONGITUDE = 104°06'18.86" (104.105239°)
NAD 27 (SURFACE HOLE LOCATION) LATITUDE = 32°39'52.45" (32.664570°) LONGITUDE = 104°04'23.96" (104.073321°)	NAD 27 (LP/FTP) LATITUDE = 32°39'43.95" (32.662208°) LONGITUDE = 104°04'23.93" (104.073314°)	NAD 27 (BHL/LTP) LATITUDE = 32°39'44.21" (32.662280°) LONGITUDE = 104°06'17.03" (104.104731°)
STATE PLANE NAD 83 (N.M. EAST) N: 605641.86' E: 621195.54'	STATE PLANE NAD 83 (N.M. EAST) N: 604782.58' E: 621199.75'	STATE PLANE NAD 83 (N.M. EAST) N: 604786.54' E: 611531.09'
STATE PLANE NAD 27 (N.M. EAST) N: 605579.53' E: 580015.83'	STATE PLANE NAD 27 (N.M. EAST) N: 604720.26' E: 580020.02'	STATE PLANE NAD 27 (N.M. EAST) N: 604724.29' E: 570351.37'

- = SURFACE HOLE LOCATION
- ◇ = LANDING POINT/FIRST TAKE POINT
- = BOTTOM HOLE LOCATION/ LAST TAKE POINT
- ▲ = SECTION CORNER LOCATED



SCALE

DRAWN BY: C.M.T. 11-30-18

REV:2 03-05-20 S.T.O. (WELLBORE CHANGE)



March 12, 2020

Legacy Income Fund I, Ltd.
558 Ambler Ave.
Abilene, TX 79601

Re: Statement of Estimated Well Costs
Parkway 16-17 State Com 2H
S/2N/2 Sections 16 and 17, Township 19 South, Range 29 East
Eddy County, New Mexico

Dear Pooled Working Interest Owner,

Pursuant to Order No. R-21035, ¶10 of the New Mexico Oil Conservation Division, Cimarex Energy Co. hereby submits its estimated schedule of the cost of drilling, completing and equipping its Parkway 16-17 State Com 2H well, which have materially decreased since the original well proposal sent on January 31, 2019. This statement reflects Cimarex's updated engineering plan for drilling for the well, which will shift the intended BHL from 2060 feet from the North line of Section 17 to 2087 feet from the North, but did not materially change the estimated cost for drilling, completing and equipping the well.

Please call the undersigned with any questions or comments.

Respectfully,

A handwritten signature in black ink, appearing to read "Riley Morris". The signature is stylized with a large, sweeping "R" and a long, horizontal stroke extending to the right.

Riley Morris
432-620-1966

cc: Florene Davidson, NMOCD

District I
1625 N. French Dr., Hobbs, NM 88240
Phone: (575) 393-6161 Fax: (575) 393-0720
District II
811 S. First St., Artesia, NM 88210
Phone: (575) 748-1283 Fax: (575) 748-9720
District III
1000 Rio Brazos Road, Aztec, NM 87410
Phone: (505) 334-6178 Fax: (505) 334-6170
District IV
1220 S. St. Francis Dr., Santa Fe, NM 87505
Phone: (505) 476-3460 Fax: (505) 476-3462

State of New Mexico
Energy, Minerals & Natural Resources Department
OIL CONSERVATION DIVISION
1220 South St. Francis Dr.
Santa Fe, NM 87505

Form C-102
Revised August 1, 2011
Submit one copy to appropriate
District Office

☐ AMENDED REPORT

WELL LOCATION AND ACREAGE DEDICATION PLAT

¹ API Number	² Pool Code	³ Pool Name
⁴ Property Code	⁵ Property Name PARKWAY 16-17 STATE COM	⁶ Well Number 2H
⁷ OGRID No.	⁸ Operator Name CIMAREX ENERGY CO.	⁹ Elevation 3349.1'

¹⁰ Surface Location

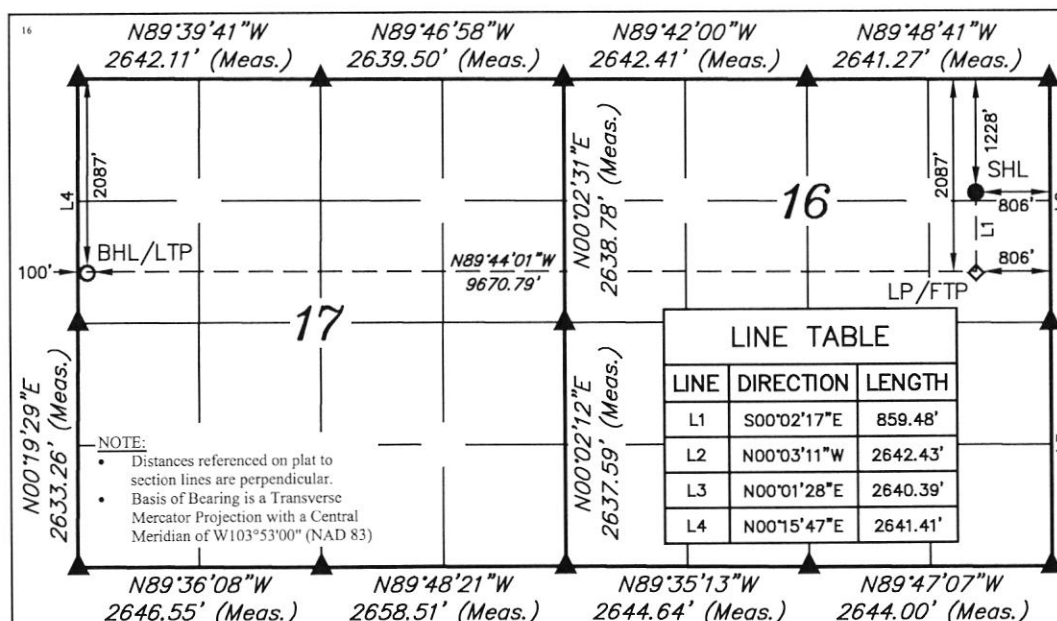
UL or lot no.	Section	Township	Range	Lot Idn	Feet from the	North/South line	Feet from the	East/West line	County
A	16	19S	29E		1228	NORTH	806	EAST	EDDY

¹¹ Bottom Hole Location If Different From Surface

UL or lot no.	Section	Township	Range	Lot Idn	Feet from the	North/South line	Feet from the	East/West line	County
E	17	19S	29E		2087	NORTH	100	WEST	EDDY

¹² Dedicated Acres	¹³ Joint or Infill	¹⁴ Consolidation Code	¹⁵ Order No.
-------------------------------	-------------------------------	----------------------------------	-------------------------

No allowable will be assigned to this completion until all interests have been consolidated or a non-standard unit has been approved by the division.



¹⁷ OPERATOR
CERTIFICATION

I hereby certify that the information contained herein is true and complete to the best of my knowledge and belief, and that this organization either owns a working interest or unleased mineral interest in the land including the proposed bottom hole location or has a right to drill this well at this location pursuant to a contract with an owner of such a mineral or working interest, or to a voluntary pooling agreement or a compulsory pooling order heretofore entered by the division.

Signature _____ Date _____

Printed Name _____

E-mail Address _____

¹⁸ SURVEYOR
CERTIFICATION

I hereby certify that the well location shown on this plat was plotted from field notes of actual surveys made by me or under my supervision, and that the same is true and correct to the best of my belief.

November 21, 2018

Date of Survey
Signature and Seal of Professional Surveyor:



Certificate Number:

NAD 83 (SURFACE HOLE LOCATION) LATITUDE = 32°39'52.87" (32.664687°) LONGITUDE = 104°04'25.78" (104.073828°)	NAD 83 (LP/FTP) LATITUDE = 32°39'44.37" (32.662325°) LONGITUDE = 104°04'25.75" (104.073821°)	NAD 83 (BHL/LTP) LATITUDE = 32°39'44.63" (32.662397°) LONGITUDE = 104°06'18.86" (104.105239°)
NAD 27 (SURFACE HOLE LOCATION) LATITUDE = 32°39'52.45" (32.664570°) LONGITUDE = 104°04'23.96" (104.073321°)	NAD 27 (LP/FTP) LATITUDE = 32°39'43.95" (32.662208°) LONGITUDE = 104°04'23.93" (104.073314°)	NAD 27 (BHL/LTP) LATITUDE = 32°39'44.21" (32.662280°) LONGITUDE = 104°06'17.03" (104.104731°)
STATE PLANE NAD 83 (N.M. EAST) N: 605641.86' E: 621195.54'	STATE PLANE NAD 83 (N.M. EAST) N: 604782.58' E: 621199.75'	STATE PLANE NAD 83 (N.M. EAST) N: 604786.54' E: 611531.09'
STATE PLANE NAD 27 (N.M. EAST) N: 605579.53' E: 580015.83'	STATE PLANE NAD 27 (N.M. EAST) N: 604720.26' E: 580020.02'	STATE PLANE NAD 27 (N.M. EAST) N: 604724.29' E: 570351.37'

- = SURFACE HOLE LOCATION
- ◇ = LANDING POINT/FIRST TAKE POINT
- = BOTTOM HOLE LOCATION/ LAST TAKE POINT
- ▲ = SECTION CORNER LOCATED



SCALE

DRAWN BY: C.M.T. 11-30-18

REV: 2 03-05-20 S.T.O. (WELLBORE CHANGE)



March 12, 2020

COG Oil & Gas, LLC
Attn: Outside Operated Properties
600 W. Illinois Avenue
Midland, Texas 79701

Re: Statement of Estimated Well Costs
Parkway 16-17 State Com 2H
S/2N/2 Sections 16 and 17, Township 19 South, Range 29 East
Eddy County, New Mexico

Dear Pooled Working Interest Owner,

Pursuant to Order No. R-21035, ¶10 of the New Mexico Oil Conservation Division, Cimarex Energy Co. hereby submits its estimated schedule of the cost of drilling, completing and equipping its Parkway 16-17 State Com 2H well, which have materially decreased since the original well proposal sent on January 31, 2019. This statement reflects Cimarex's updated engineering plan for drilling for the well, which will shift the intended BHL from 2060 feet from the North line of Section 17 to 2087 feet from the North, but did not materially change the estimated cost for drilling, completing and equipping the well.

Please call the undersigned with any questions or comments.

Respectfully,

A handwritten signature in black ink, appearing to read "Riley Morris", with a stylized flourish at the end.

Riley Morris
432-620-1966

cc: Florene Davidson, NMOCD

District I
1625 N. French Dr., Hobbs, NM 88240
Phone: (575) 393-6161 Fax: (575) 393-0720
District II
811 S. First St., Artesia, NM 88210
Phone: (575) 748-1283 Fax: (575) 748-9720
District III
1000 Rio Brazos Road, Aztec, NM 87410
Phone: (505) 334-6178 Fax: (505) 334-6170
District IV
1220 S. St. Francis Dr., Santa Fe, NM 87505
Phone: (505) 476-3460 Fax: (505) 476-3462

State of New Mexico
Energy, Minerals & Natural Resources Department
OIL CONSERVATION DIVISION
1220 South St. Francis Dr.
Santa Fe, NM 87505

Form C-102
Revised August 1, 2011
Submit one copy to appropriate
District Office

☐ AMENDED REPORT

WELL LOCATION AND ACREAGE DEDICATION PLAT

¹ API Number	² Pool Code	³ Pool Name
⁴ Property Code	⁵ Property Name PARKWAY 16-17 STATE COM	⁶ Well Number 2H
⁷ OGRID No.	⁸ Operator Name CIMAREX ENERGY CO.	⁹ Elevation 3349.1'

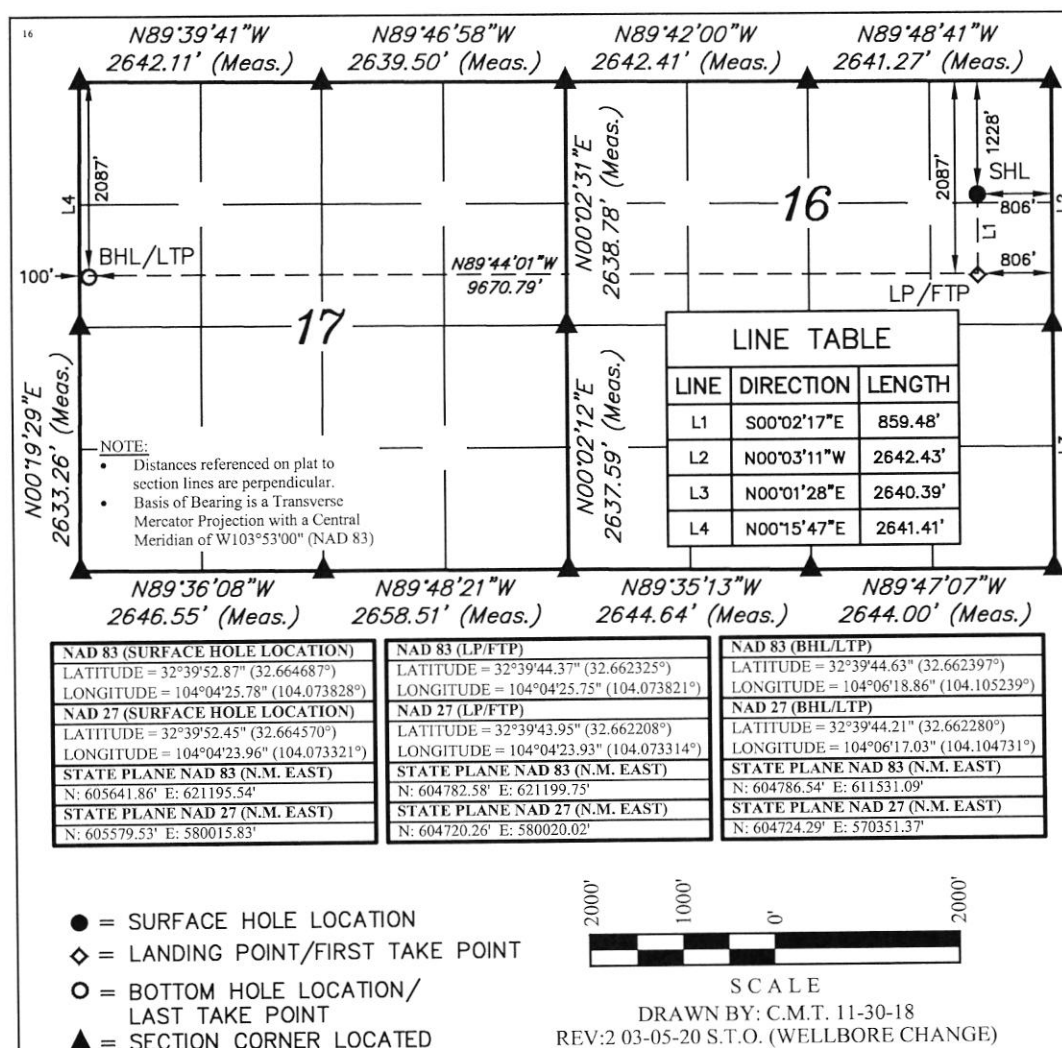
¹⁰ Surface Location

UL or lot no. A	Section 16	Township 19S	Range 29E	Lot Idn	Feet from the 1228	North/South line NORTH	Feet from the 806	East/West line EAST	County EDDY
--------------------	---------------	-----------------	--------------	---------	-----------------------	---------------------------	----------------------	------------------------	----------------

¹¹ Bottom Hole Location If Different From Surface

UL or lot no. E	Section 17	Township 19S	Range 29E	Lot Idn	Feet from the 2087	North/South line NORTH	Feet from the 100	East/West line WEST	County EDDY
¹² Dedicated Acres	¹³ Joint or Infill	¹⁴ Consolidation Code	¹⁵ Order No.						

No allowable will be assigned to this completion until all interests have been consolidated or a non-standard unit has been approved by the division.



¹⁷ OPERATOR
CERTIFICATION

I hereby certify that the information contained herein is true and complete to the best of my knowledge and belief, and that this organization either owns a working interest or unleased mineral interest in the land including the proposed bottom hole location or has a right to drill this well at this location pursuant to a contract with an owner of such a mineral or working interest, or to a voluntary pooling agreement or a compulsory pooling order heretofore entered by the division.

Signature _____ Date _____

Printed Name _____

E-mail Address _____

¹⁸ SURVEYOR
CERTIFICATION

I hereby certify that the well location shown on this plat was plotted from field notes of actual surveys made by me or under my supervision, and that the same is true and correct to the best of my belief.

November 21, 2018

Date of Survey
Signature and Seal of Professional Surveyor:



Certificate Number: _____