


COMPULSORY POOLING APPLICATION CHECKLIST (pdf)

ALL INFORMATION IN THE APPLICATION MUST BE SUPPORTED BY SIGNED AFFIDAVITS

21024	APPLICANT'S RESPONSE
Date: February 6, 2020	
Applicant	SEP PERMIAN, LLC
Designated Operator & OGRID (affiliation if applicable)	SEP PERMIAN, LLC (OGRID 338479)
Applicant's Counsel:	Holland & Hart LLP
Case Title:	APPLICATION OF SEP PERMIAN, LLC TO AMEND ORDER NO. R-20412 TO ADD ADDITIONAL WELLS TO THE APPROVED HORIZONTAL WELL SPACING UNIT, EDDY COUNTY, NEW MEXICO.
Entries of Appearance/Intervenors:	None
Well Family	Lakewood Fed Com wells
Formation/Pool	
Formation Name(s) or Vertical Extent:	Glorieta-Yeso formation
Primary Product (Oil or Gas):	Oil
Pooling this vertical extent:	Glorieta-Yeso formation
Pool Name and Pool Code:	N. Seven Rivers; Glorieta-Yeso Pool (Pool Code 97565)
Well Location Setback Rules:	Statewide oil
Spacing Unit Size:	160 acres
Spacing Unit	
Type (Horizontal/Vertical)	Horizontal
Size (Acres)	160 acres, more or less
Building Blocks:	40-acre
Orientation:	Standup
Description: TRS/County	E/2 W/2 of Section 34, Township 19 South, Range 25 East, NMPM, Eddy County, New Mexico
Standard Horizontal Well Spacing Unit (Y/N), If No, describe	Yes
Other Situations	
Depth Severance: Y/N. If yes, description	Yes, depth severance at 3095' TVD in the SE/4 SE/4 of Section 34. See Exhibit C, ¶ 13; Case No. 20188, Exhibit 1, ¶ 16. Spur owns 100% of the working interest ownership below the depth severance line. Spur is the only affected owner and has agreed to pay all the mineral owners in the Unit as if there was no depth severance
Proximity Tracts: If yes, description	None
Proximity Defining Well: if yes, description	N/A
Applicant's Ownership in Each Tract	Yes
Well(s)	

Name & API (if assigned), surface and bottom hole location, footages, completion target, orientation, completion status (standard or non-standard)	
Well #1	<p>Lakewood Fed Com Well No. 9H, API No. 30-015-45677 SHL:485 feet from the South line and 2375 feet from the East line, (Unit N) of Section 27, Township 19 South, Range 25 East, NMPM. BHL:50 feet from the South line and 2630 feet from the West line, (Unit N) of Section 34, Township 19 South, Range 25 East, NMPM.</p> <p>Completion Target: Glorieta-Yeso at approx 3025 feet TVD. Well Orientation: North to South Completion Location expected to be:non-standard</p>
Well #2	<p>Lakewood Fed Com Well No. 10H, API No. 30-015-45678 SHL:465 feet from the South line and 2375 feet from the West line, (Unit N) of Section 27, Township 19 South, Range 25 East, NMPM. BHL:50 feet from the North line and 2274 feet from the West line, (Unit N) of Section 34, Township 19 South, Range 25 East, NMPM.</p> <p>Completion Target: Glorieta-Yeso at approx 2725 feet TVD. Well Orientation: North to South Completion Location expected to be:standard</p>
Well #3	<p>Lakewood Fed Com Well No. 14H, API No. 30-015-46122 SHL:430 feet from the North line and 1290 feet from the West line, (Lot 4) of Section 3, Township 20 South, Range 25 East, NMPM. BHL:50 feet from the North line and 1561 feet from the West line, (Unit C) of Section 34, Township 19 South, Range 25 East, NMPM.</p> <p>Completion Target: Glorieta-Yeso at approx 2780 feet TVD. Well Orientation: North to South Completion Location expected to be:non-standard</p>
Horizontal Well First and Last Take Points	See Exhibit C-2, C-3 for the C-102s
Completion Target (Formation, TVD and MD)	See Exhibit C-5 for the well proposals of the wells. This data is also listed above with each well.

AFE Capex and Operating Costs	
Drilling Supervision/Month \$	See Order No. R-20412
Production Supervision/Month \$	See Order No. R-20412
Justification for Supervision Costs	See Order No. R-20412
Requested Risk Charge	See Order No. R-20412
Notice of Hearing	
Proposed Notice of Hearing	See Application
Proof of Mailed Notice of Hearing (20 days before hearing)	See Exhibit D-1
Proof of Published Notice of Hearing (10 days before hearing)	See Exhibit D-2
Ownership Determination	
Land Ownership Schematic of the Spacing Unit	Exhibit C-4
Tract List (including lease numbers and owners)	Exhibit C-4
Pooled Parties (including ownership type)	Exhibit C-4, D-1
Unlocatable Parties to be Pooled	N/A
Ownership Depth Severance (including percentage above & below)	N/A
Joinder	
Sample Copy of Proposal Letter	Exhibit C-5
List of Interest Owners (ie Exhibit A of JOA)	Exhibit C-4, D-1
Chronology of Contact with Non-Joined Working Interests	Exhibit C-6
Overhead Rates In Proposal Letter	See Order No. R-20412, Exhibit C-5
Cost Estimate to Drill and Complete	Exhibit C-5
Cost Estimate to Equip Well	Exhibit C-5
Cost Estimate for Production Facilities	Exhibit C-5
Geology	
Summary (including special considerations)	See Case No. 20188, Exhibit 2
Spacing Unit Schematic	See Case No. 20188, Exhibit 2
Gunbarrel/Lateral Trajectory Schematic	N/A
Well Orientation (with rationale)	See Case No. 20188, Exhibit 2
Target Formation	See Case No. 20188, Exhibit 2
HSU Cross Section	See Case No. 20188, Exhibit 2
Depth Severance Discussion	N/A
Forms, Figures and Tables	
C-102	Exhibit C-2, C-3
Tracts	Exhibit C-4
Summary of Interests, Unit Recapitulation (Tracts)	Exhibit C-4
General Location Map (including basin)	See Case No. 20188, Exhibit 2

Well Bore Location Map	See Case No. 20188, Exhibit 2
Structure Contour Map - Subsea Depth	See Case No. 20188, Exhibit 2
Cross Section Location Map (including wells)	See Case No. 20188, Exhibit 2
Cross Section (including Landing Zone)	See Case No. 20188, Exhibit 2
Additional Information	
CERTIFICATION: I hereby certify that the information provided in this checklist is complete and accurate.	
Printed Name (Attorney or Party Representative):	Kaitlyn A. Luck
Signed Name (Attorney or Party Representative):	
Date:	26-Aug-20

DISTRICT I
1625 N. French Dr., Hobbs, NM 88240
Phone: (575) 393-6161 Fax: (575) 393-0720

DISTRICT II
811 S. First St., Artesia, NM 88210
Phone: (575) 748-1283 Fax: (575) 748-9720

DISTRICT III
1000 Rio Brazos Road, Aztec, NM 87410
Phone: (505) 334-6178 Fax: (505) 334-6170

DISTRICT IV
1220 S. St. Francis Dr., Santa Fe, NM 87505
Phone: (505) 476-3460 Fax: (505) 476-3462

State of New Mexico
Energy, Minerals & Natural Resources Department
OIL CONSERVATION DIVISION
1220 South St. Francis Dr.
Santa Fe, New Mexico 87505

Form C-102
Revised August 1, 2011
Submit one copy to appropriate
District Office

☐ AMENDED REPORT

WELL LOCATION AND ACREAGE DEDICATION PLAT

API Number	Pool Code	Pool Name
Property Code	Property Name LAKEWOOD FEDERAL	Well Number 14H
OGRID No.	Operator Name SPUR ENERGY PARTNERS, LLC	Elevation 3529'

Surface Location

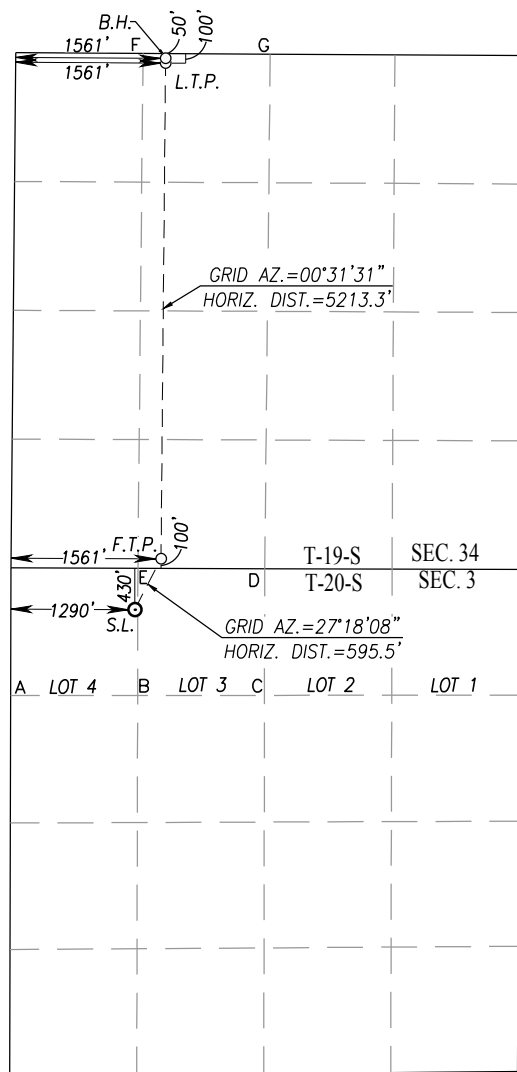
UL or lot No.	Section	Township	Range	Lot Idn	Feet from the	North/South line	Feet from the	East/West line	County
4	3	20-S	25-E		430	NORTH	1290	WEST	EDDY

Bottom Hole Location If Different From Surface

UL or lot No.	Section	Township	Range	Lot Idn	Feet from the	North/South line	Feet from the	East/West line	County
C	34	19-S	25-E		50	NORTH	1561	WEST	EDDY

Dedicated Acres	Joint or Infill	Consolidation Code	Order No.
-----------------	-----------------	--------------------	-----------

NO ALLOWABLE WILL BE ASSIGNED TO THIS COMPLETION UNTIL ALL INTERESTS HAVE BEEN CONSOLIDATED OR A NON-STANDARD UNIT HAS BEEN APPROVED BY THE DIVISION



SCALE: 1"=2000'

BOTTOM HOLE LOCATION
NAD 83 NME
Y= 590885.7 N
X= 497399.2 E
LAT.=32.624314° N
LONG.=104.476051° W
LAST TAKE POINT
NAD 83 NME
Y= 590835.7 N
X= 497398.8 E
LAT.=32.624176° N
LONG.=104.476052° W

BOTTOM HOLE LOCATION
NAD 27 NME
Y= 590824.9 N
X= 456220.7 E
LAT.=32.624201° N
LONG.=104.475531° W
LAST TAKE POINT
NAD 27 NME
Y= 590774.9 N
X= 456220.3 E
LAT.=32.624063° N
LONG.=104.475532° W

CORNER COORDINATES TABLE

NAD 27 NME
A - Y= 584180.0 N, X= 454608.0 E
B - Y= 584181.2 N, X= 455929.3 E
C - Y= 584182.4 N, X= 457250.5 E
D - Y= 585509.7 N, X= 457253.0 E
E - Y= 585514.1 N, X= 455932.2 E
F - Y= 590876.2 N, X= 455985.8 E
G - Y= 590868.6 N, X= 457311.0 E

CORNER COORDINATES TABLE

NAD 83 NME
A - Y= 584240.6 N, X= 495786.5 E
B - Y= 584241.8 N, X= 497107.8 E
C - Y= 584243.0 N, X= 498429.0 E
D - Y= 585570.3 N, X= 498431.5 E
E - Y= 585574.7 N, X= 497110.7 E
F - Y= 590937.0 N, X= 497164.3 E
G - Y= 590929.4 N, X= 498489.5 E

FIRST TAKE POINT

NAD 83 NME
Y= 585673.9 N
X= 497351.5 E
LAT.=32.609988° N
LONG.=104.476183° W

GEODETIC COORDINATES

NAD 83 NME
SURFACE LOCATION
Y= 585144.9 N
X= 497078.4 E
LAT.=32.608533° N
LONG.=104.477067° W

FIRST TAKE POINT

NAD 27 NME
Y= 585613.2 N
X= 456172.9 E
LAT.=32.609875° N
LONG.=104.475663° W

GEODETIC COORDINATES

NAD 27 NME
SURFACE LOCATION
Y= 585084.3 N
X= 455899.9 E
LAT.=32.608419° N
LONG.=104.476548° W

OPERATOR CERTIFICATION

I hereby certify that the information herein is true and complete to the best of my knowledge and belief, and that this organization either owns a working interest or unleased mineral interest in the land including the proposed bottom hole location or has a right to drill this well at this location pursuant to a contract with an owner of such mineral or working interest, or to a voluntary pooling agreement or a compulsory pooling order heretofore entered by the division.

Signature

Date

Printed Name

E-mail Address

SURVEYOR CERTIFICATION

I hereby certify that the well location shown on this plat was plotted from field notes of actual survey made by me or under my supervision, and that the same is true and correct to the best of my belief.

APRIL 05, 2018

Date of Survey

Signature & Seal of Professional Surveyor:

Certificate Number

Gary G. Eidson 12641

Ronald J. Eidson 3239

ACK

REL. W.O.:18110411

JWSC W.O.: 20.13.0327

DISTRICT I
1625 N. French Dr., Hobbs, NM 88240
Phone: (575) 393-6161 Fax: (575) 393-0720
DISTRICT II
811 S. First St., Artesia, NM 88210
Phone: (575) 748-1283 Fax: (575) 748-9720
DISTRICT III
1000 Rio Brazos Road, Aztec, NM 87410
Phone: (505) 334-6178 Fax: (505) 334-6170
DISTRICT IV
1220 S. St. Francis Dr., Santa Fe, NM 87505
Phone: (505) 476-3460 Fax: (505) 476-3462

State of New Mexico
Energy, Minerals & Natural Resources Department
OIL CONSERVATION DIVISION
1220 South St. Francis Dr.
Santa Fe, New Mexico 87505

Form C-102
Revised August 1, 2011
Submit one copy to appropriate
District Office

☐ AMENDED REPORT

WELL LOCATION AND ACREAGE DEDICATION PLAT

API Number	Pool Code	Pool Name
Property Code	Property Name LAKEWOOD FEDERAL COM	Well Number 10H
OGRID No.	Operator Name SPUR ENERGY PARTNERS, LLC	Elevation 3478'

Surface Location

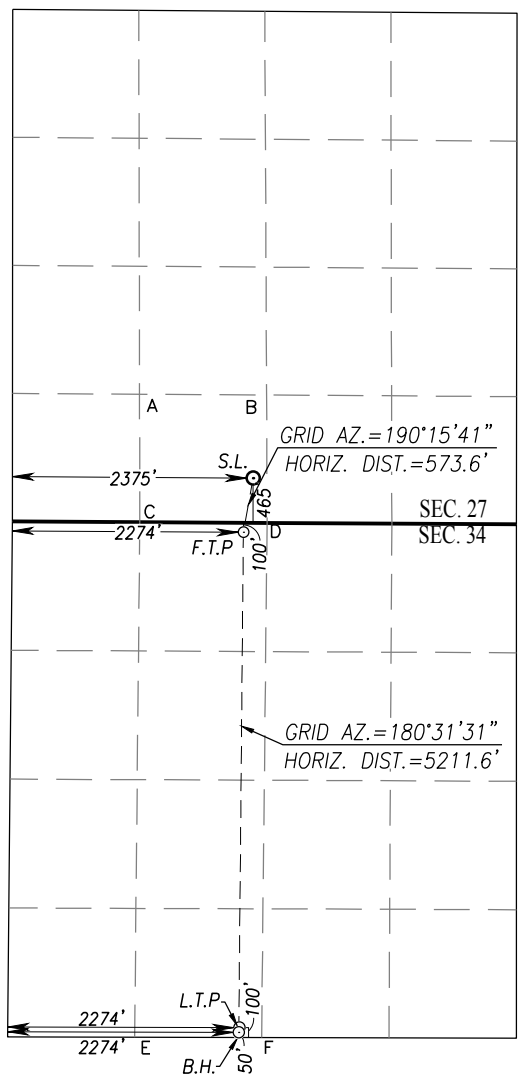
UL or lot No. N	Section 27	Township 19-S	Range 25-E	Lot Idn	Feet from the 465	North/South line SOUTH	Feet from the 2375	East/West line WEST	County EDDY
---------------------------	----------------------	-------------------------	----------------------	---------	-----------------------------	----------------------------------	------------------------------	-------------------------------	-----------------------

Bottom Hole Location If Different From Surface

UL or lot No. N	Section 34	Township 19-S	Range 25-E	Lot Idn	Feet from the 50	North/South line SOUTH	Feet from the 2274	East/West line WEST	County EDDY
---------------------------	----------------------	-------------------------	----------------------	---------	----------------------------	----------------------------------	------------------------------	-------------------------------	-----------------------

Dedicated Acres	Joint or Infill	Consolidation Code	Order No.
-----------------	-----------------	--------------------	-----------

NO ALLOWABLE WILL BE ASSIGNED TO THIS COMPLETION UNTIL ALL INTERESTS HAVE BEEN CONSOLIDATED OR A NON-STANDARD UNIT HAS BEEN APPROVED BY THE DIVISION



SCALE: 1"=2000'
GEODETIC COORDINATES
NAD 83 NME
SURFACE LOCATION
Y=591395.9 N
X=498213.7 E
LAT.=32.625719° N
LONG.=104.473407° W

FIRST TAKE POINT
NAD 83 NME
Y= 590831.6 N
X= 498111.6 E
LAT.=32.624168° N
LONG.=104.473737° W

CORNER COORDINATES TABLE
NAD 27 NME
A - Y= 592208.5 N, X= 455983.1 E
B - Y= 592200.1 N, X= 457305.0 E
C - Y= 590876.2 N, X= 455985.8 E
D - Y= 590868.6 N, X= 457311.0 E
E - Y= 585514.1 N, X= 455932.2 E
F - Y= 585509.7 N, X= 457253.0 E

CORNER COORDINATES TABLE
NAD 83 NME
A - Y= 592269.3 N, X= 497161.6 E
B - Y= 592260.9 N, X= 498483.5 E
C - Y= 590937.0 N, X= 497164.3 E
D - Y= 590929.4 N, X= 498489.5 E
E - Y= 585574.7 N, X= 497110.7 E
F - Y= 585570.3 N, X= 498431.5 E

LAST TAKE POINT
NAD 83 NME
Y= 585671.5 N
X= 498064.3 E
LAT.=32.609984° N
LONG.=104.473868° W
BOTTOM HOLE LOCATION
NAD 83 NME
Y= 585621.5 N
X= 498063.8 E
LAT.=32.609847° N
LONG.=104.473869° W

LAST TAKE POINT
NAD 27 NME
Y= 585610.9 N
X= 456885.8 E
LAT.=2.609871° N
LONG.=104.473349° W
BOTTOM HOLE LOCATION
NAD 27 NME
Y= 585560.9 N
X= 456885.3 E
LAT.=32.609733° N
LONG.=104.473350° W

OPERATOR CERTIFICATION

I hereby certify that the information herein is true and complete to the best of my knowledge and belief, and that this organization either owns a working interest or unleased mineral interest in the land including the proposed bottom hole location or has a right to drill this well at this location pursuant to a contract with an owner of such mineral or working interest, or to a voluntary pooling agreement or a compulsory pooling order heretofore entered by the division.

Signature _____ Date _____

Printed Name _____

E-mail Address _____

SURVEYOR CERTIFICATION

I hereby certify that the well location shown on this plat was plotted from field notes of actual surveys made by me or under my supervision, and that the same is true and correct to the best of my belief.

DATE: FEBRUARY 27, 2018
Date of Survey
Signature & Seal of Professional Surveyor: **3239**

Certificate Number Gary G. Eidson 12641
Ronald J. Eidson 3239

ACK REL. W.O.:18110113 JWSC W.O.: 20.13.0356

Ronald J. Eidson 07/21/2020

DISTRICT I
1625 N. French Dr., Hobbs, NM 88240
Phone: (575) 393-6161 Fax: (575) 393-0720
DISTRICT II
811 S. First St., Artesia, NM 88210
Phone: (575) 748-1283 Fax: (575) 748-9720
DISTRICT III
1000 Rio Brazos Road, Aztec, NM 87410
Phone: (505) 334-6178 Fax: (505) 334-6170
DISTRICT IV
1220 S. St. Francis Dr., Santa Fe, NM 87505
Phone: (505) 476-3460 Fax: (505) 476-3462

State of New Mexico
Energy, Minerals & Natural Resources Department
OIL CONSERVATION DIVISION
1220 South St. Francis Dr.
Santa Fe, New Mexico 87505

Form C-102
Revised August 1, 2011
Submit one copy to appropriate
District Office

☐ AMENDED REPORT

WELL LOCATION AND ACREAGE DEDICATION PLAT

API Number	Pool Code	Pool Name
Property Code	Property Name LAKWOOD FEDERAL COM	Well Number 9H
OGRID No.	Operator Name SPUR ENERGY PARTNERS, LLC	Elevation 3478'

Surface Location

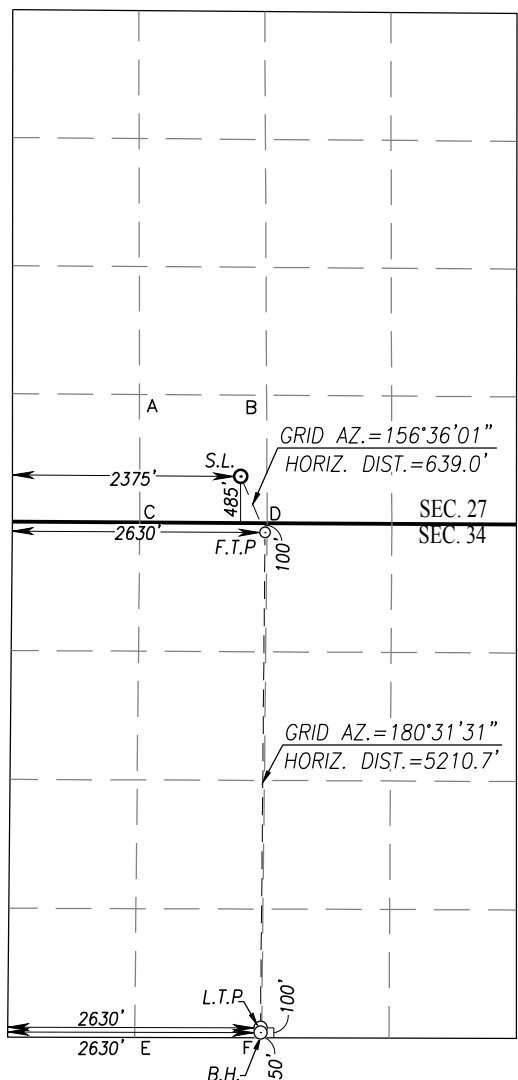
UL or lot No. N	Section 27	Township 19-S	Range 25-E	Lot Idn	Feet from the 485	North/South line SOUTH	Feet from the 2375	East/West line WEST	County EDDY
---------------------------	----------------------	-------------------------	----------------------	---------	-----------------------------	----------------------------------	------------------------------	-------------------------------	-----------------------

Bottom Hole Location If Different From Surface

UL or lot No. N	Section 34	Township 19-S	Range 25-E	Lot Idn	Feet from the 50	North/South line SOUTH	Feet from the 2630	East/West line WEST	County EDDY
---------------------------	----------------------	-------------------------	----------------------	---------	----------------------------	----------------------------------	------------------------------	-------------------------------	-----------------------

Dedicated Acres	Joint or Infill	Consolidation Code	Order No.
-----------------	-----------------	--------------------	-----------

NO ALLOWABLE WILL BE ASSIGNED TO THIS COMPLETION UNTIL ALL INTERESTS HAVE BEEN CONSOLIDATED OR A NON-STANDARD UNIT HAS BEEN APPROVED BY THE DIVISION



SCALE: 1"=2000'
GEODETIC COORDINATES
NAD 83 NME
SURFACE LOCATION
Y=591415.9 N
X=498213.8 E
LAT.=32.625774° N
LONG.=104.473407° W
FIRST TAKE POINT
NAD 83 NME
Y= 590829.6 N
X= 498467.5 E
LAT.=32.624163° N
LONG.=104.472581° W
CORNER COORDINATES TABLE
NAD 27 NME
A - Y= 592208.5 N, X= 455983.1 E
B - Y= 592200.1 N, X= 457305.0 E
C - Y= 590876.2 N, X= 455985.8 E
D - Y= 590868.6 N, X= 457311.0 E
E - Y= 585514.1 N, X= 455932.2 E
F - Y= 585509.7 N, X= 457253.0 E
CORNER COORDINATES TABLE
NAD 83 NME
A - Y= 592269.3 N, X= 497161.6 E
B - Y= 592260.9 N, X= 498483.5 E
C - Y= 590937.0 N, X= 497164.3 E
D - Y= 590929.4 N, X= 498489.5 E
E - Y= 585574.7 N, X= 497110.7 E
F - Y= 585570.3 N, X= 498431.5 E
LAST TAKE POINT
NAD 83 NME
Y= 585670.4 N
X= 498420.2 E
LAT.=32.609982° N
LONG.=104.472712° W
BOTTOM HOLE LOCATION
NAD 83 NME
Y= 585620.4 N
X= 498419.7 E
LAT.=32.609845° N
LONG.=104.472713° W
LAST TAKE POINT
NAD 27 NME
Y= 585609.7 N
X= 457241.7 E
LAT.=32.609869° N
LONG.=104.472193° W
BOTTOM HOLE LOCATION
NAD 27 NME
Y= 585559.7 N
X= 457241.2 E
LAT.=32.609731° N
LONG.=104.472194° W

OPERATOR CERTIFICATION

I hereby certify that the information herein is true and complete to the best of my knowledge and belief, and that this organization either owns a working interest or unleased mineral interest in the land including the proposed bottom hole location or has a right to drill this well at this location pursuant to a contract with an owner of such mineral or working interest, or to a voluntary pooling agreement or a compulsory pooling order heretofore entered by the division.

Signature _____ Date _____

Printed Name _____

E-mail Address _____

SURVEYOR CERTIFICATION

I hereby certify that the well location shown on this plat was plotted from field notes of actual surveys made by me or under my supervision, and that the same is true and correct to the best of my belief.

DATE: FEBRUARY 7, 2018

Date of Survey _____
Signature & Seal of Professional Surveyor _____

Certificate Number Gary G. Eidson 12641
Ronald J. Eidson 3239

ACK REL. W.O.:18110114 JWSC W.O.: 20.13.0357

ACK REL. W.O.:18110114 JWSC W.O.: 20.13.0357