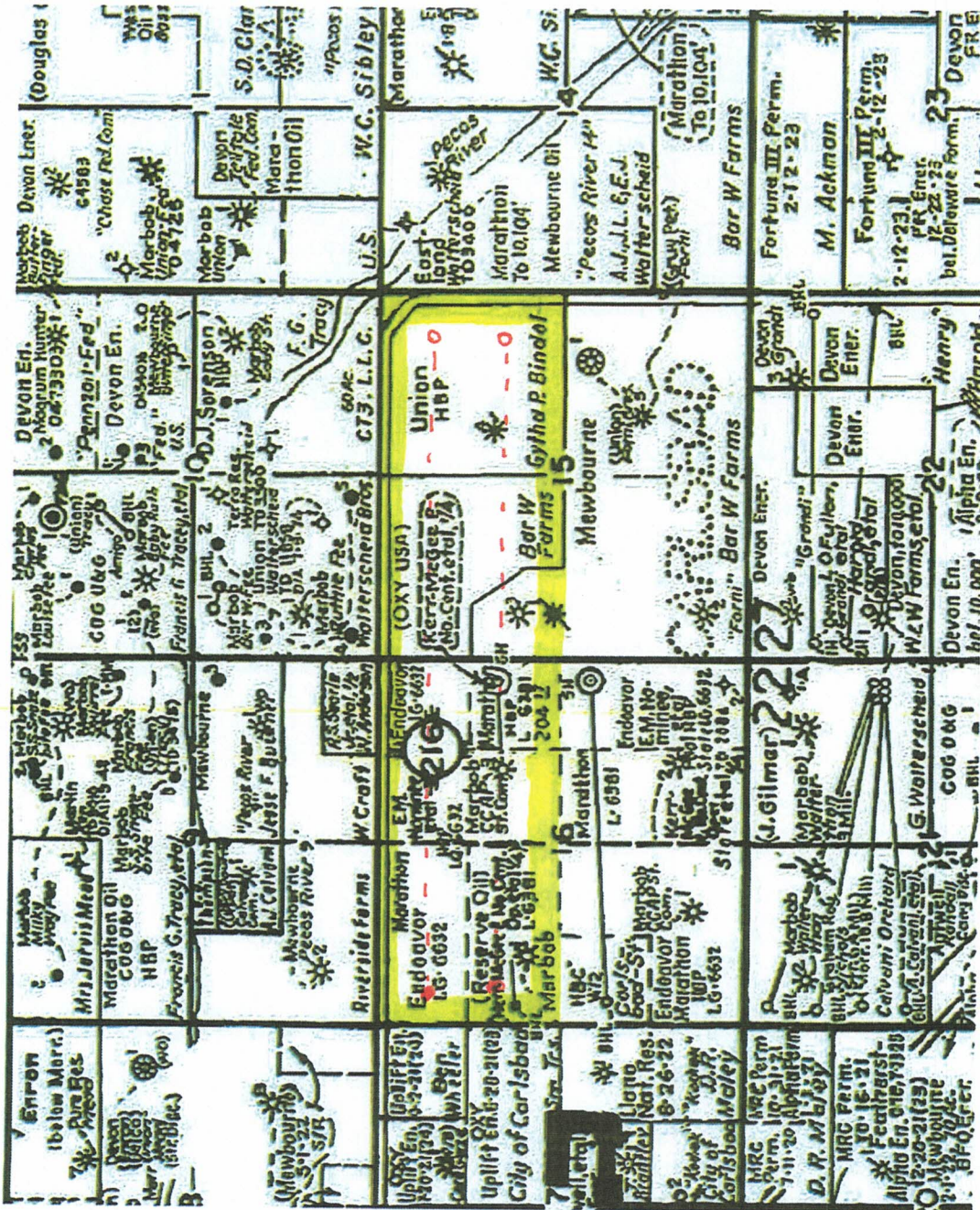


Case 21776
 Replacement Exhibit 2-A



ATTACHMENT

A

District I
1625 N. French Dr., Hobbs, NM 88240
Phone: (575) 393-6161 Fax: (575) 393-0720
District II
811 S. First St., Artesia, NM 88210
Phone: (575) 748-1283 Fax: (575) 748-9720
District III
1000 Rio Brazos Road, Aztec, NM 87410
Phone: (505) 334-6178 Fax: (505) 334-6170
District IV
1220 S. St. Francis Dr., Santa Fe, NM 87505
Phone: (505) 476-3460 Fax: (505) 476-3462

State of New Mexico
Energy, Minerals & Natural Resources Department
OIL CONSERVATION DIVISION
1220 South St. Francis Dr.
Santa Fe, NM 87505

Form C-10
Revised August 1, 20
Submit one copy to appropriate
District Office

AMENDED REPORT

WELL LOCATION AND ACREAGE DEDICATION PLAT

1 API Number		2 Pool Code		3 Pool Name			
4 Property Code		5 Property Name MIGHTY DUCKS 15/16 WOAD STATE COM				6 Well Number 1H	
7 OGRID NO.		8 Operator Name MEWBOURNE OIL COMPANY				9 Elevation 3070'	

10 Surface Location

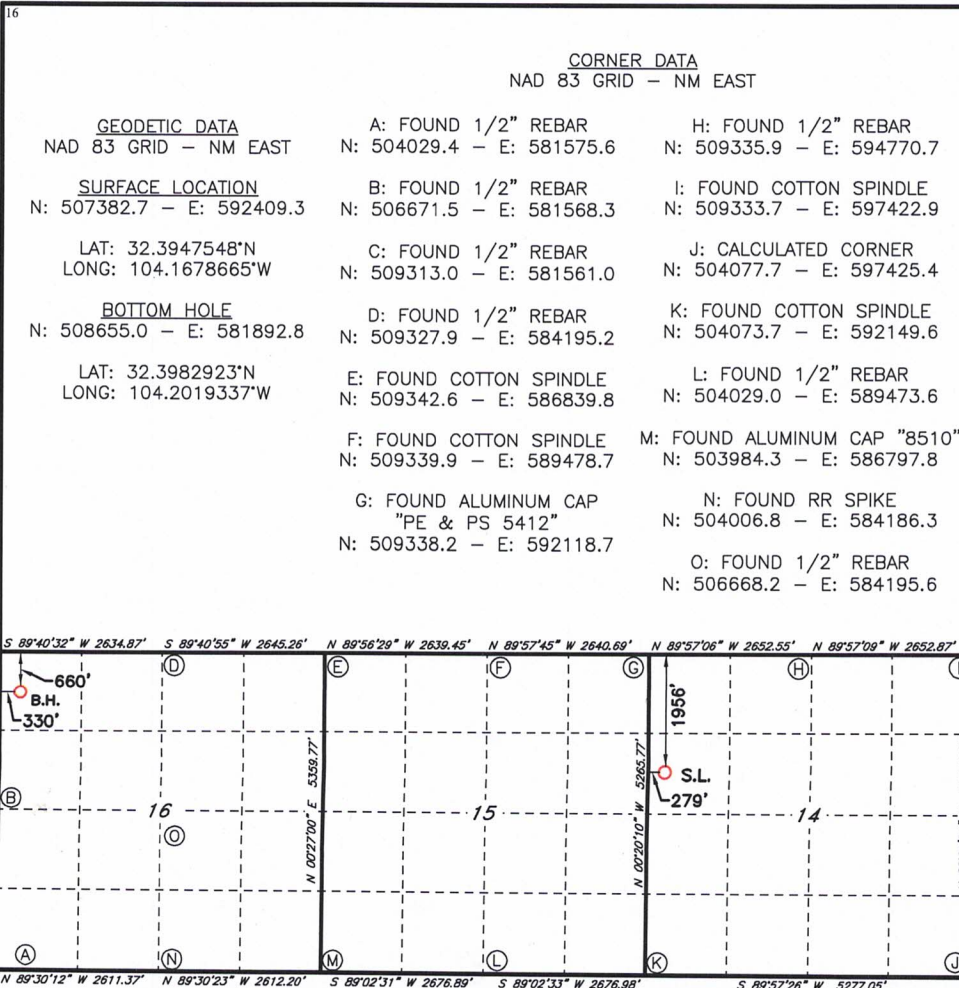
UL or lot no.	Section	Township	Range	Lot Idn	Feet from the	North/South line	Feet From the	East/West line	County
E	14	22S	27E		1956	NORTH	279	WEST	EDDY

11 Bottom Hole Location If Different From Surface

UL or lot no.	Section	Township	Range	Lot Idn	Feet from the	North/South line	Feet from the	East/West line	County
D	16	22S	27E		660	NORTH	330	WEST	EDDY

12 Dedicated Acres	13 Joint or Infill	14 Consolidation Code	15 Order No.
--------------------	--------------------	-----------------------	--------------

No allowable will be assigned to this completion until all interest have been consolidated or a non-standard unit has been approved by the division.



17 OPERATOR CERTIFICATION

I hereby certify that the information contained herein is true and complete to the best of my knowledge and belief, and that this organization either owns a working interest or unleased mineral interest in the land including the proposed bottom hole location or has a right to drill this well at this location pursuant to a contract with an owner of such a mineral or working interest, or to a voluntary pooling agreement or a compulsory pooling order heretofore entered by the division.

Signature _____ Date _____
Printed Name _____
E-mail Address _____

18 SURVEYOR CERTIFICATION

I hereby certify that the well location shown on this plat was plotted from field notes of actual surveys made by me or under my supervision, and that the same is true and correct to the best of my belief.

6-10-2020

Date of Survey

Signature and Seal of Professional Surveyor



19680

Certificate Number

LS20060297

District I
1625 N. French Dr., Hobbs, NM 88240
Phone: (575) 393-6161 Fax: (575) 393-0720
District II
811 S. First St., Artesia, NM 88210
Phone: (575) 748-1283 Fax: (575) 748-9720
District III
1000 Rio Brazos Road, Aztec, NM 87410
Phone: (505) 334-6178 Fax: (505) 334-6170
District IV
1220 S. St. Francis Dr., Santa Fe, NM 87505
Phone: (505) 476-3460 Fax: (505) 476-3462

State of New Mexico
Energy, Minerals & Natural Resources Department
OIL CONSERVATION DIVISION
1220 South St. Francis Dr.
Santa Fe, NM 87505

Form C-1C
Revised August 1, 20
Submit one copy to appropriate
District Office

AMENDED REPORT

WELL LOCATION AND ACREAGE DEDICATION PLAT

1 API Number		2 Pool Code		3 Pool Name			
4 Property Code		5 Property Name MIGHTY DUCKS 15/16 WOHE STATE COM				6 Well Number 1H	
7 GRID NO.		8 Operator Name MEWBOURNE OIL COMPANY				9 Elevation 3070'	

10 Surface Location

UL or lot no.	Section	Township	Range	Lot Idn	Feet from the	North/South line	Feet From the	East/West line	County
E	14	22S	27E		1967	NORTH	251	WEST	EDDY

11 Bottom Hole Location If Different From Surface

UL or lot no.	Section	Township	Range	Lot Idn	Feet from the	North/South line	Feet from the	East/West line	County
E	16	22S	27E		2080	NORTH	330	WEST	EDDY

12 Dedicated Acres	13 Joint or Infill	14 Consolidation Code	15 Order No.
--------------------	--------------------	-----------------------	--------------

No allowable will be assigned to this completion until all interest have been consolidated or a non-standard unit has been approved by the division.

CORNER DATA
NAD 83 GRID - NM EAST

GEODETIC DATA
NAD 83 GRID - NM EAST

SURFACE LOCATION
N: 507371.5 - E: 592381.5
LAT: 32.3947241°N
LONG: 104.1679566°W

BOTTOM HOLE
N: 507235.4 - E: 581896.7
LAT: 32.3943899°N
LONG: 104.2019266°W

A: FOUND 1/2" REBAR N: 504029.4 - E: 581575.6	B: FOUND 1/2" REBAR N: 506671.5 - E: 581568.3	C: FOUND 1/2" REBAR N: 509313.0 - E: 581561.0	D: FOUND 1/2" REBAR N: 509327.9 - E: 584195.2	E: FOUND COTTON SPINDLE N: 509342.6 - E: 586839.8	F: FOUND COTTON SPINDLE N: 509339.9 - E: 589478.7	G: FOUND ALUMINUM CAP "PE & PS 5412" N: 509338.2 - E: 592118.7	H: FOUND 1/2" REBAR N: 509335.9 - E: 594770.7	I: FOUND COTTON SPINDLE N: 509333.7 - E: 597422.9	J: CALCULATED CORNER N: 504077.7 - E: 597425.4	K: FOUND COTTON SPINDLE N: 504073.7 - E: 592149.6	L: FOUND 1/2" REBAR N: 504029.0 - E: 589473.6	M: FOUND ALUMINUM CAP "8510" N: 503984.3 - E: 586797.8	N: FOUND RR SPIKE N: 504006.8 - E: 584186.3	O: FOUND 1/2" REBAR N: 506668.2 - E: 584195.6
--	--	--	--	--	--	--	--	--	---	--	--	---	--	--

17 OPERATOR CERTIFICATION
I hereby certify that the information contained herein is true and complete to the best of my knowledge and belief, and that this organization either owns a working interest or unleased mineral interest in the land including the proposed bottom hole location or has a right to drill this well at this location pursuant to a contract with an owner of such a mineral or working interest, or to a voluntary pooling agreement or a compulsory pooling order heretofore entered by the division.

Signature _____ Date _____

Printed Name _____

E-mail Address _____

18 SURVEYOR CERTIFICATION
I hereby certify that the well location shown on this plat was plotted from field notes of actual surveys made by me or under my supervision, and that the same is true and correct to the best of my belief.

6-10-2020
Date of Survey

Signature and Seal of Professional Surveyor _____

19680
Certificate Number

LS20060298