

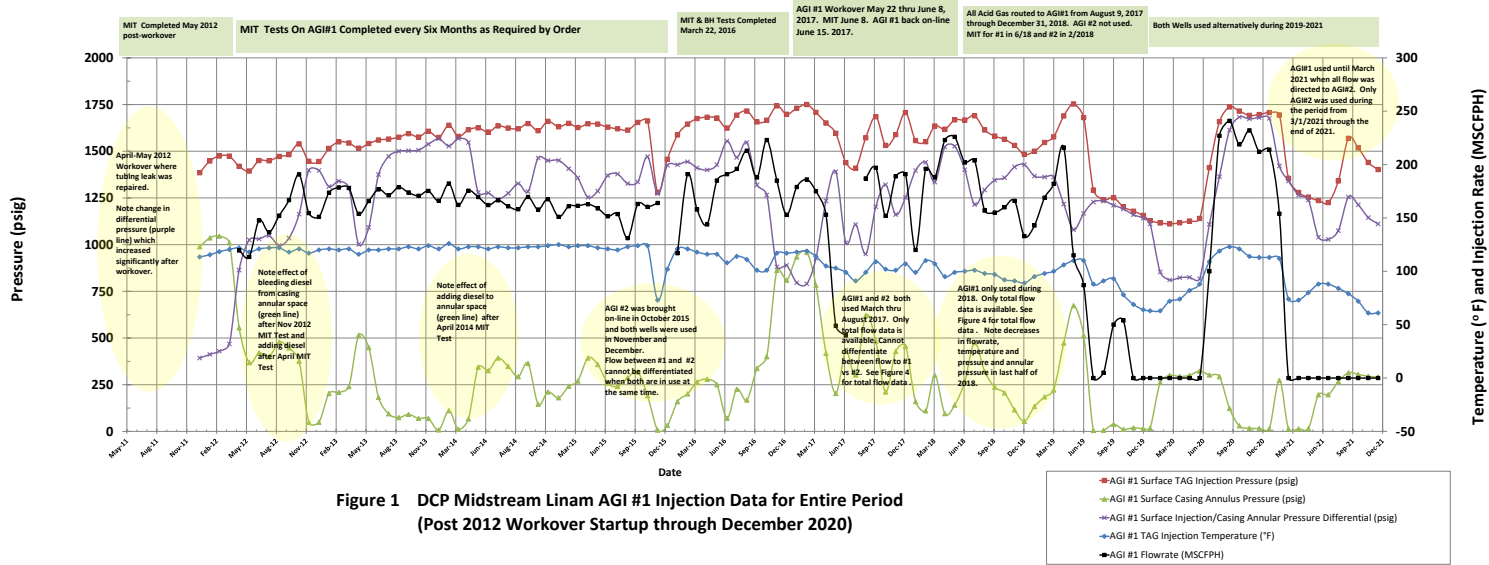
TABLE 1 SUMMARY DATA ANALYSIS OF LINAM AGI #1 TRENDS FOR JANUARY 2012 THROUGH DECEMBER 2021 (3 PAGES)

DCP MIDSTREAM LINAM RANCH AGI #1 AND #2 CUMULATIVE INJECTION DATA

Month Ended	2012	2012	2012	2012	AGI #1 TAG Injection Temperature (°F)	AGI #1 Surface TAG Injection Pressure (psig)	AGI #1 Surface Casing Annulus Pressure (psig)	AGI #1 Surface Injection/Casing Annular Pressure Differential (psig)	AGI #1 Average Bottom Hole Pressure (psig)	AGI #1 Average Bottom Hole Temperature (°F)	Total Flowrate (MSCFPH)	AGI #1 Flowrate (MSCFPH)	AGI #2 Flowrate (MSCFPH)	AGI #2 Surface TAG Injection Temperature (°F)	AGI #2 Surface TAG Injection Pressure (psig)	AGI #2 Surface Casing Annulus Pressure (psig)	AGI #2 Surface Injection/Casing Annular Pressure Differential (psig)	
January	2012	Jan-12	Jan-12	Jan-12	114	1385	989	393			N/A	N/A	0					No Flow Data Available
February	2012	Feb-12	Feb-12	Feb-12	116	1448	1036	412			N/A	N/A	0					No Flow Data Available
March	2012	Mar-12	Mar-12	Mar-12	118	1475	1046	429			N/A	N/A	0					No Flow Data Available
April	2012	Apr-12	Apr-12	Apr-12	121	1474	1010	468			N/A	N/A	0					No Flow Data Available
May	2012	May-12	May-12	May-12	122	1419	555	864			120	120	0					Plant Workover and Shutdown
June	2012	Jun-12	Jun-12	Jun-12	118	1394	368	1025			113	113	0					Plant Workover and Shutdown
July	2012	Jul-12	Jul-12	Jul-12	121	1450	420	1030			148	148	0					
August	2012	Aug-12	Aug-12	Aug-12	122	1449	401	1048			137	137	0					
September	2012	Sep-12	Sep-12	Sep-12	122	1472	478	995			152	152	0					
October	2012	Oct-12	Oct-12	Oct-12	118	1482	447	1035			167	167	0					
November	2012	Nov-12	Nov-12	Nov-12	121	1539	376	1163			191	191	0					November 14, 2012 MIT Test
December	2012	Dec-12	Dec-12	Dec-12	117	1446	48	1398			155	155	0					
January	2013	Jan-13	Jan-13	Jan-13	120	1445	49	1397			151	151	0					
February	2013	Feb-13	Feb-13	Feb-13	121	1515	203	1311			174	174	0					
March	2013	Mar-13	Mar-13	Mar-13	120	1550	209	1340			179	179	0					
April	2013	Apr-13	Apr-13	Apr-13	121	1544	240	1304			178	178	0					April 30, 2013 MIT Test
May	2013	May-13	May-13	May-13	116	1516	515	1001			154	154	0					
June	2013	Jun-13	Jun-13	Jun-13	120	1541	449	1092			166	166	0					
July	2013	Jul-13	Jul-13	Jul-13	120	1560	182	1375			177	177	0					
August	2013	Aug-13	Aug-13	Aug-13	121	1565	94	1472			171	171	0					
September	2013	Sep-13	Sep-13	Sep-13	121	1575	74	1500			179	179	0					
October	2013	Oct-13	Oct-13	Oct-13	123	1594	91	1503			174	174	0					October 30, 2013 MIT Test
November	2013	Nov-13	Nov-13	Nov-13	121	1576	70	1506			171	171	0					
December	2013	Dec-13	Dec-13	Dec-13	124	1607	69	1538			175	175	0					
January	2014	Jan-14	Jan-14	Jan-14	121	1574	8	1566			166	166	0					
February	2014	Feb-14	Feb-14	Feb-14	126	1639	111	1528			182	182	0					
March	2014	Mar-14	Mar-14	Mar-14	121	1579	11	1568			162	162	0					
April	2014	Apr-14	Apr-14	Apr-14	123	1615	67	1547			175	175	0					April 30, 2014 MIT Test
May	2014	May-14	May-14	May-14	123	1625	344	1280			170	170	0					
June	2014	Jun-14	Jun-14	Jun-14	121	1603	325	1277			162	162	0					
July	2014	Jul-14	Jul-14	Jul-14	123	1636	393	1243			167	167	0					
August	2014	Aug-14	Aug-14	Aug-14	122	1624	348	1275			161	161	0					
September	2014	Sep-14	Sep-14	Sep-14	122	1620	293	1327			158	158	0					September 19, 2014 MIT Test
October	2014	Oct-14	Oct-14	Oct-14	123	1648	364	1284			170	170	0					
November	2014	Nov-14	Nov-14	Nov-14	123	1610	146	1464			158	158	0					
December	2014	Dec-14	Dec-14	Dec-14	124	1660	211	1450			168	168	0					
January	2015	Jan-15	Jan-15	Jan-15	125	1631	180	1451			151	151	0					
February	2015	Feb-15	Feb-15	Feb-15	123	1649	242	1407			161	161	0					
March	2015	Mar-15	Mar-15	Mar-15	124	1627	270	1357			161	161	0					March 19, 2015 MIT Test
April	2015	Apr-15	Apr-15	Apr-15	124	1647	393	1254			163	163	0					
May	2015	May-15	May-15	May-15	122	1645	358	1287			159	159	0					
June	2015	Jun-15	Jun-15	Jun-15	121	1629	259	1370			152	152	0					
July	2015	Jul-15	Jul-15	Jul-15	120	1620	241	1378			154	154	0					
August	2015	Aug-15	Aug-15	Aug-15	123	1613	287	1327			131	131	0					
September	2015	Sep-15	Sep-15	Sep-15	124	1654	318	1336			163	163	0					September 15, 2015 MIT Test
October	2015	Oct-15	Oct-15	Oct-15	124	1662	191	1471			160	160	0					AGI #2 Operations Began October 2015
November	2015	Nov-15	Nov-15	Nov-15	73	1280	7	1273			164	164	0	109	1430	394	1035	AGI #1 & #2 both in use
December	2015	Dec-15	Dec-15	Dec-15	102	1457	32	1425			151	151	0	111	1498	494	1004	AGI #1 & #2 both in use
January	2016	Jan-16	Jan-16	Jan-16	121	1587	159	1428			117	117	0	77	1094	0	1094	AGI #2 not in use
February	2016	Feb-16	Feb-16	Feb-16	121	1645	201	1444			191	191	0	49	1603	0	1603	AGI #2 not in use
March	2016	Mar-16	Mar-16	Mar-16	118	1675	264	1411			158	158	0	58	1679	1	1678	AGI #2 not in use
April	2016	Apr-16	Apr-16	Apr-16	116	1682	279	1400			144	144	0	63	1688	1	1687	AGI #2 not in use
May	2016	May-16	May-16	May-16	116	1678	250	1428			185	185	0	70	1685	1	1684	AGI #2 not in use
June	2016	Jun-16	Jun-16	Jun-16	108	1624	70	1554			191	191	0	81	2	1	1	AGI #2 not in use. TAG trapped in blocked off section of AGI #2 pipe blown down
July	2016	Jul-16	Jul-16	Jul-16	114	1693	226	1467			196	196	0	88	2	1	1	AGI #2 not in use
August	2016	Aug-16	Aug-16	Aug-16	111	1715	168	1547			213	213	0	78	3	1	2	AGI #2 not in use
September	2016	Sep-16	Sep-16	Sep-16	101	1657	337	1320			188	188	0	73	3	1	2	AGI #2 not in use
October	2016	Oct-16	Oct-16	Oct-16	101	1666	400	1266			223	223	0	68	2	0	2	AGI #2 not in use
November	2016	Nov-16	Nov-16	Nov-16	117	1743	862	881			185	185	0	54	1	0	1	AGI #2 not in use
December	2016	Dec-16	Dec-16	Dec-16	117	1698	809	889			153	153	0	43	1	0	1	AGI #2 not in use
January	2017	Jan-17	Jan-17	Jan-17	118	1730	934	796			179	179	0	45	8	0	8	AGI #2 not in use
February	2017	Feb-17	Feb-17	Feb-17	119	1750	958	791			186	186	0	54	10	278	-267	AGI #2 not in use
March	2017	Mar-17	Mar-17	Mar-17	114	1708	782	927			186	175	11	104	1701	373	1327	Both wells used; #2 flow meter not functioning. AGI #1 for entire month and AGI #2 only from 3-13 to 3-16 and 3-21 to 3-31
April	2017	Apr-17	Apr-17	Apr-17	105	1651	418	1234			194	153	41	100	1862	296	1566	Both wells used. Flow meter for #2 not working. TAG routed to #1 well exclusively, both wells simultaneously and #2 well exclusively. All TAG routed to #2 from 4-26 onward in anticipation of workover of #1 well.
May	2017	May-17	May-17	May-17	103	1596	203	1390			155	49	150	104	1842	66	1772	Both wells used. #2 Flow Meter not working. TAG Routed to AGI #2 save for 19 hour period from 5-17 to 5-18 when it was routed to AGI #1. AGI #1 workover 5-22 thru 6-8. AGI #2 experienced mechanical blockage resulting in both wells being shut down from 5-25 to 5-31.

Month Ended					AGI #1 TAG Injection Temperature (°F)	AGI #1 Surface TAG Injection Pressure (psig)	AGI #1 Surface Casing Annulus Pressure (psig)	AGI #1 Surface Injection/Casing Annular Pressure Differential (psig)	AGI #1 Average Bottom Hole Pressure (psig)	AGI #1 Average Bottom Hole Temperature (°F)	Total Flowrate (MSCFPH)	AGI #1 Flowrate (MSCFPH)	AGI #2 Flowrate (MSCFPH)	AGI #2 Surface TAG Injection Temperature (°F)	AGI #2 Surface TAG Injection Pressure (psig)	AGI #2 Surface Casing Annulus Pressure (psig)	AGI #2 Surface Injection/Casing Annular Pressure Differential (psig)	
June	2017	Jun-17	Jun-17	Jun-17	99	1439	429	1010		147	40	107	113	1838	1	1837	Both wells used. #2 used from 6-2 through 6-15. Workover of #1 completed 6-8 and successful MIT performed 6-8; #1 back online 6-15. #1 and #2 used simultaneously from 6-15 to 6-30. Mechanical Problem with flow meter for #2 well. Only total flow can be measured; no way to differentiate between #1 and #2 when they are used together.	
July	2017	Jul-17	Jul-17	Jul-17	91	1409	302	1108	4392	137	171	0	102	1810	sensor error	n/a	Both wells used. Annular Pressure Meter for AGI #2 malfunctioning for month of July. Mechanical problem with flow meter for #2 well persists. Bottomhole sensors added to #1 Well as part of workover completed in June and began recording data on 7-20-17	
August	2017	Aug-17	Aug-17	Aug-17	99	1572	621	950	4514	134	187	187	0	83	1400	192	1064	Both wells used. Mechanical problem with flow meter for #2 well persists. Only total flow data available. Annular Pressure meter for AGI #2 back in service 8-11-17. Annular Pressure and differential pressure readings are for period 8-11-17 through 8-31-17.
September	2017	Sep-17	Sep-17	Sep-17	109	1685	482	1203	4578	135	197	197	0	77	1267	134	1132	Only AGI #1 used. Entire plant shut down from Sept 19 to Sept 30th for a scheduled turnaround. Data available only for first 19 days of September
October	2017	Oct-17	Oct-17	Oct-17	102	1531	211	1321	4250	136	152	152	0	63	872	97	776	Plant shutdown 9-19 through 10-3 for a turnaround. Only AGI #1 used during remainder of month. Major software upgrade in DCS. BH sensors not yet integrated into DCS.
November	2017	Nov-17	Nov-17	Nov-17	101	1589	428	1161	4080	136	189	189	0	56	1013	82	931	Only AGI #1 in use in November. BH sensors not reconnected to DCS until 11-29.
December	2017	Dec-17	Dec-17	Dec-17	107	1707	456	1252	4080	136	191	191	0	44	1102	84	1017	Only AGI #1 in use.
January	2018	Jan-18	Jan-18	Jan-18	99	1557	160	1397	4416	133	120	120	0	41	704	177	528	Only AGI #1 in use.
February	2018	Feb-18	Feb-18	Feb-18	110	1551	110	1441	4458	131	196	196	0	48	785	199	527	Only AGI #1 in use.
March	2018	Mar-18	Mar-18	Mar-18	107	1635	300	1335	4503	133	188	188	0	58	938	264	673	Only AGI #1 in use.
April	2018	Apr-18	Apr-18	Apr-18	95	1618	95	1523	4576	131	223	223	0	63	1158	224	934	Only AGI #1 in use.
May	2018	May-18	May-18	May-18	99	1668	141	1527	4646	131	226	226	0	79	1120	198	921	Only AGI #1 in use.
June	2018	Jun-18	Jun-18	Jun-18	100	1667	267	1401	4615	132	202	202	0	84	1062	189	873	Only AGI #1 in use.
July	2018	Jul-18	Jul-18	Jul-18	101	1690	475	1215	4627	132	204	204	0	83	1080	179	901	Only AGI #1 in use.
August	2018	Aug-18	Aug-18	Aug-18	98	1614	321	1293	4565	131	157	157	0	82	1043	169	874	Only AGI #1 in use.
September	2018	Sep-18	Sep-18	Sep-18	97	1581	237	1345	4534	130	155	155	0	72	898	154	744	Only AGI #1 in use.
October	2018	Oct-18	Oct-18	Oct-18	92	1564	206	1358	4525	130	160	160	0	61	830	134	696	Only AGI #1 in use.
November	2018	Nov-18	Nov-18	Nov-18	91	1531	115	1416	4529	129	166	166	0	64	1143	108	1036	Only AGI #1 in use.
December	2018	Dec-18	Dec-18	Dec-18	89	1483	55	1428	4480	128	133	133	0	69	1152	85	1067	Only AGI #1 in use.
January	2019	Jan-19	Jan-19	Jan-19	95	1500	133	1367	4457	129	143	143	0	69	925	68	858	
February	2019	Feb-19	Feb-19	Feb-19	98	1547	185	1362	4484	129	169	169	0	73	936	194	724	
March	2019	Mar-19	Mar-19	Mar-19	100	1577	222	1362	4511	131	182	182	0	78	442	238	161	
April	2019	Apr-19	Apr-19	Apr-19	106	1689	473	1217	4577	133	216	216	0	92	14	229	-215	
May	2019	May-19	May-19	May-19	110	1753	673	1080	4516	136	225	115	110	111	1616	166	1450	
June	2019	Jun-19	Jun-19	Jun-19	110	1680	513	1167	4433	136	199	87	112	112	1595	68	1528	
July	2019	Jul-19	Jul-19	Jul-19	88	1292	5	1228	4279	138	207	0	207	113	1600	113	1487	
August	2019	Aug-19	Aug-19	Aug-19	91	1240	6	1234	4224	138	182	5	176	113	1554	136	1419	
September	2019	Sep-19	Sep-19	Sep-19	93	1251	38	1211	4171	137	169	50	118	111	1484	112	1371	
October	2019	Oct-19	Oct-19	Oct-19	78	1202	11	1191	4156	137	231	54	177	106	1486	35	1451	
November	2019	Nov-19	Nov-19	Nov-19	69	1179	19	1160	4143	137	204	0	204	110	1512	116	1396	
December	2019	Dec-19	Dec-19	Dec-19	64	1156	15	1142	4116	138	195	0	195	111	1494	135	1359	
January	2020	Jan-20	Jan-20	Jan-20	63	1128	17	1111	4096	138	188	0	188	110	1481	54	1427	
February	2020	Feb-20	Feb-20	Feb-20	63	1116	262	854	4085	138	191	0	191	107	1462	137	1324	Perfrom MIT on both wells adjust backside pressure
March	2020	Mar-20	Mar-20	Mar-20	72	1111	300	811	4085	138	217	0	217	109	1509	59	1450	
April	2020	Apr-20	Apr-20	Apr-20	74	1117	294	823	4095	138	228	0	228	109	1519	35	1485	
May	2020	May-20	May-20	May-20	82	1126	300	825	4098	138	212	0	212	108	1501	10	1491	
June	2020	Jun-20	Jun-20	Jun-20	88	1140	323	817	4109	138	226	0	226	117	1500	127	1373	
July	2020	Jul-20	Jul-20	Jul-20	109	1412	302	1109	4212	139	219	100	119	109	1409	103	1307	Switch flow from #2 to #1 16 July 9am
August	2020	Aug-20	Aug-20	Aug-20	119	1658	293	1364	4332	141	227	227	0	98	1113	181	932	
September	2020	Sep-20	Sep-20	Sep-20	123	1737	123	1613	4389	143	241	241	0	87	1125	217	909	
October	2020	Oct-20	Oct-20	Oct-20	121	1715	30	1683	4403	142	219	219	0	79	1153	181	973	
November	2020	Nov-20	Nov-20	Nov-20	114	1692	17	1673	4447	140	232	232	0	73	1189	157	1032	
December	2020	Dec-20	Dec-20	Dec-20	113	1696	16	1680	4488	138	212	212	0	63	1225	141	1085	
January	2021	Jan-21	Jan-21	Jan-21	113	1707	15	1676	4523	136	214	214	0	61	1237	135	1102	

Month Ended				AGI #1 TAG Injection Temperature (°F)	AGI #1 Surface TAG Injection Pressure (psig)	AGI #1 Surface Casing Annulus Pressure (psig)	AGI #1 Surface Injection/Casing Annular Pressure Differential (psig)	AGI #1 Average Bottom Hole Pressure (psig)	AGI #1 Average Bottom Hole Temperature (°F)	Total Flowrate (MSCFP)	AGI #1 Flowrate (MSCFP)	AGI #2 Flowrate (MSCFP)	AGI #2 Surface TAG Injection Temperature (°F)	AGI #2 Surface TAG Injection Pressure (psig)	AGI #2 Surface Casing Annulus Pressure (psig)	AGI #2 Surface Injection/Casing Annular Pressure Differential (psig)		
February	2021	Feb-21	Feb-21	Feb-21	112	1694	273	1421	4521	136	154	154	0	60	1231	514	717	
March	2021	Mar-21	Mar-21	Mar-21	74	1355	14	1341	4336	138	229	0	229	113	1648	79	1569	Flow switched to AGI#2 on 3/1/2021
April	2021	Apr-21	Apr-21	Apr-21	73	1279	14	1265	4265	138	227	0	227	113	1624	19	1606	
May	2021	May-21	May-21	May-21	80	1254	15	1239	4232	139	220	0	220	112	1603	21	1582	
June	2021	Jun-21	Jun-21	Jun-21	88	1236	196	1040	4203	139	221	0	221	112	1595	116	1479	
July	2021	Jul-21	Jul-21	Jul-21	88	1225	196	1028	4187	139	237	0	237	116	1627	83	1545	
August	2021	Aug-21	Aug-21	Aug-21	84	1341	266	1075	4167	139	189	0	189	110	1558	143	1415	
September	2021	Sep-21	Sep-21	Sep-21	79	1569	314	1255	4145	139	214	0	214	112	1552	356	1197	
October	2021	Oct-21	Oct-21	Oct-21	72	1518	305	1213	4140	139	224	0	224	114	1574	302	1272	
November	2021	Nov-21	Nov-21	Nov-21	61	1440	295	1145	4133	139	214	0	214	109	1512	90	1422	
December	2021	Dec-21	Dec-21	Dec-21	61	1402	291	1111	4129	139	218	0	218	108	1500	56	1444	
Average for 2021				82	1418	183	1234	4248	138	213	31	183	103	1522	160	1363		
Standard Deviation 2021				16	163	124	176	136	1	21	70	82	19	136	146	247		
Average for Entire Period				106.6	1532.4	285.9	1245.8	4338.1	135.8	181.0	136.3	43.2	86.2	1168.0	130.2	1025.5		
Standard Deviation Entire Period				17.7	165.8	239.6	259.5	184.1	3.7	29.3	71.5	81.6	23.4	543.1	115.0	538.8		
OPERATING CONSTRAINTS BASED ON NMOCC ORDER AND ACO 275																		
MAOP in NMOCC Order is 2644 psig																		



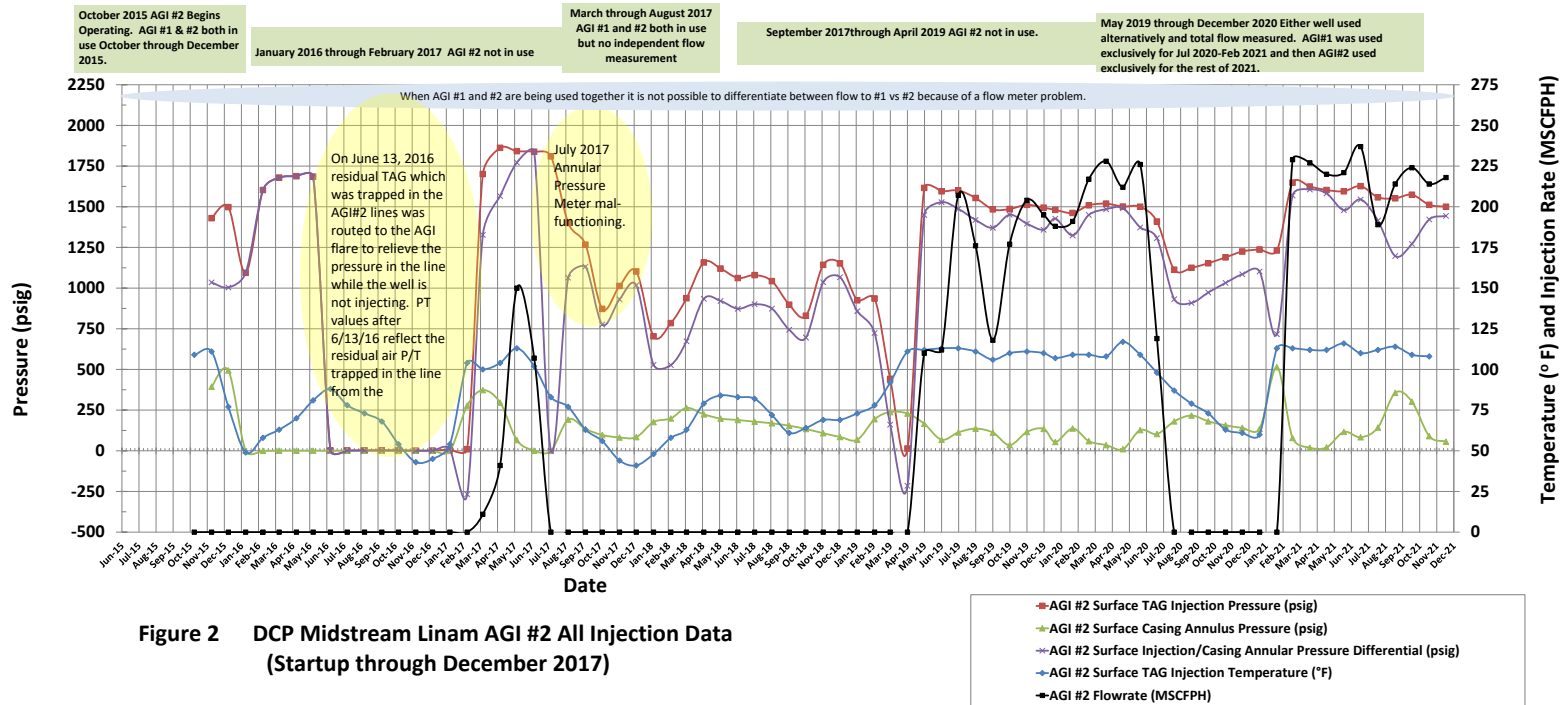


Figure 3 DCP Midstream Linam AGI #1 and #2 Combined Total Flowrate (MSCFPH) (May 2012 through December 2020)

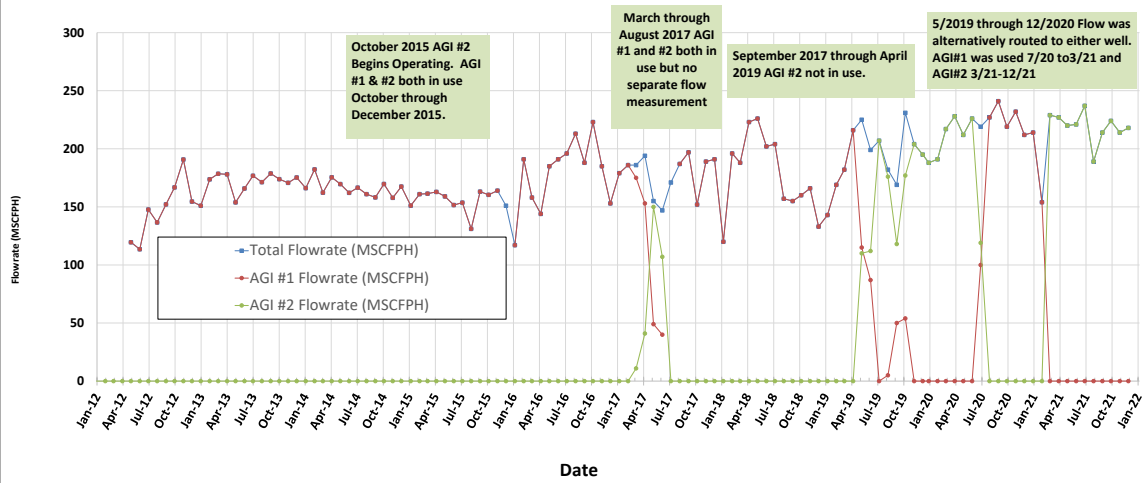


FIGURE 4 BOTTOM HOLE PRESSURE AND TEMPERATURE - AGI #1

