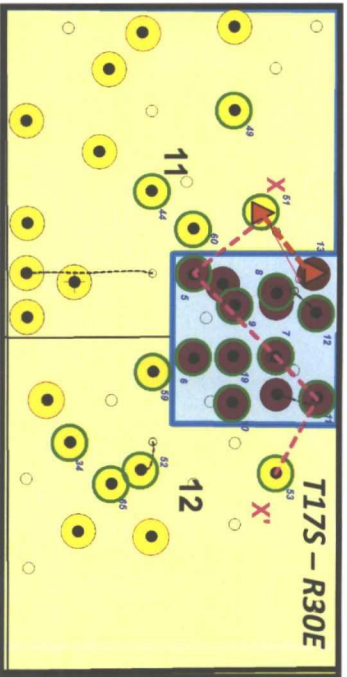


# COMPLETION COMPARISON

30015372400000  
 BURNETT OIL COMPANY INCORPORATED  
 GISSLER B 51  
 990 FNL/1650 FEL  
 TWP: 17 S - Range: 30 E - Sec: 11  
 TD=6051

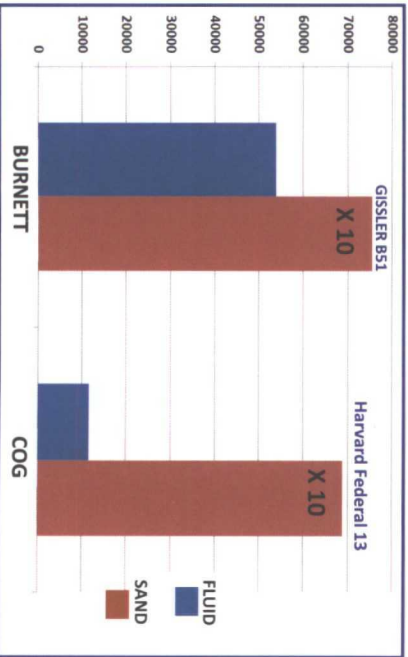
30015378270000  
 COG OPERATING LIMITED LIABILITY CORP  
 HARVARD FEDERAL 13  
 623 FNL/880 FEL  
 TWP: 17 S - Range: 30 E - Sec: 11  
 TD=6278

## Location Map



- Burnett - Oper.
  - COG - Oper.
  - Well Used for Production Analysis
- 51 Well #

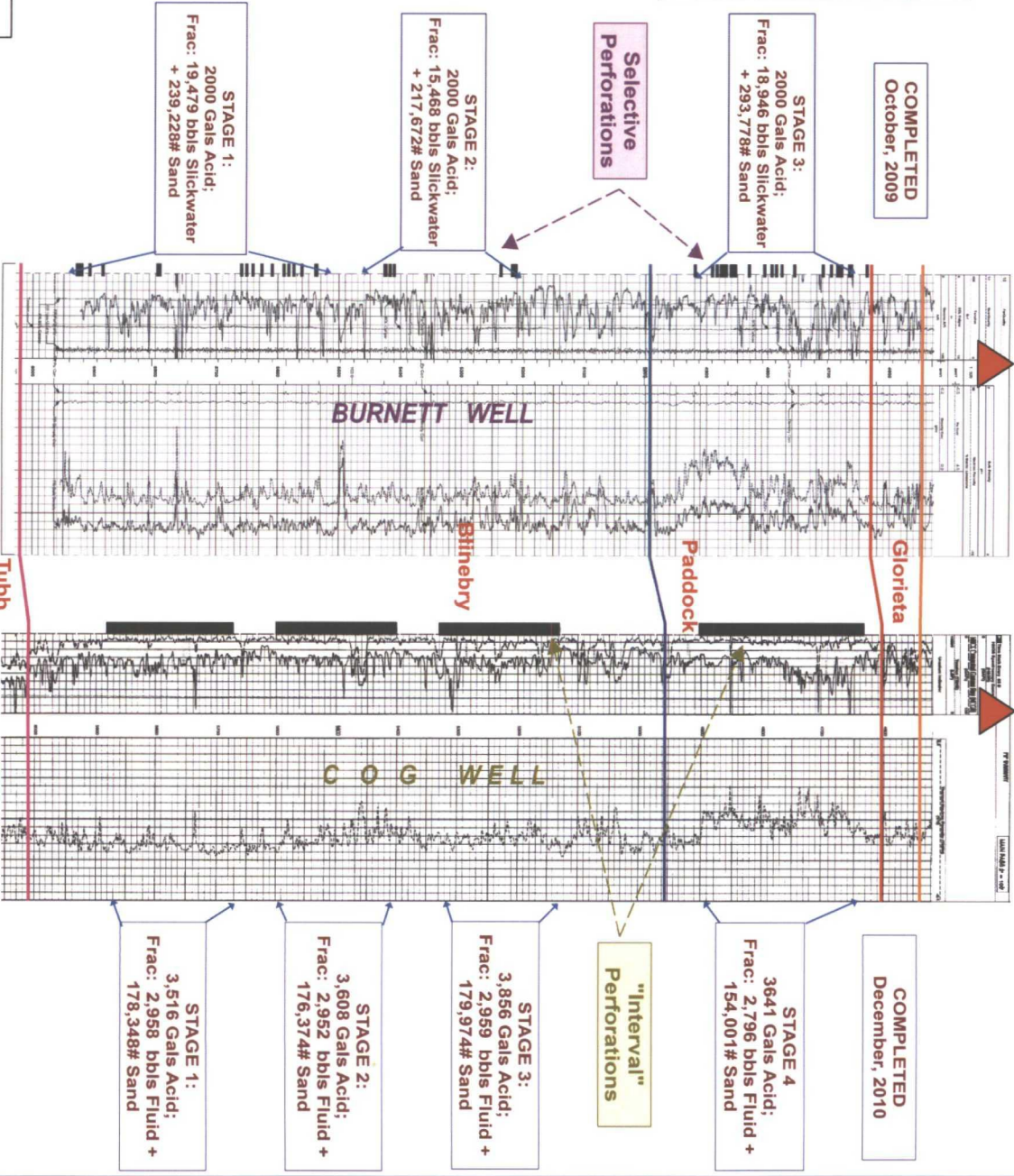
## Total Frac Volume Comparison



Burnett Fluid Volume: 462% of COG's



New Mexico OCD  
 Consolidated Hearing Cases:  
 14613 & 14647  
 Burnett Oil Co., Inc./  
 Hudson Oil Company of Texas  
 Exhibit # 18



**TOTAL FRAC VOLUME: 3 STAGES**  
 754,678# Sand + 53,893 bbls. Fluid

**TOTAL FRAC VOLUME: 4 STAGES**  
 688,697# Sand + 11,665 bbls. Fluid