

W

E

29078
MARSHALL & WINSTON INC
MEDLIN 8 FEDERAL COM
1

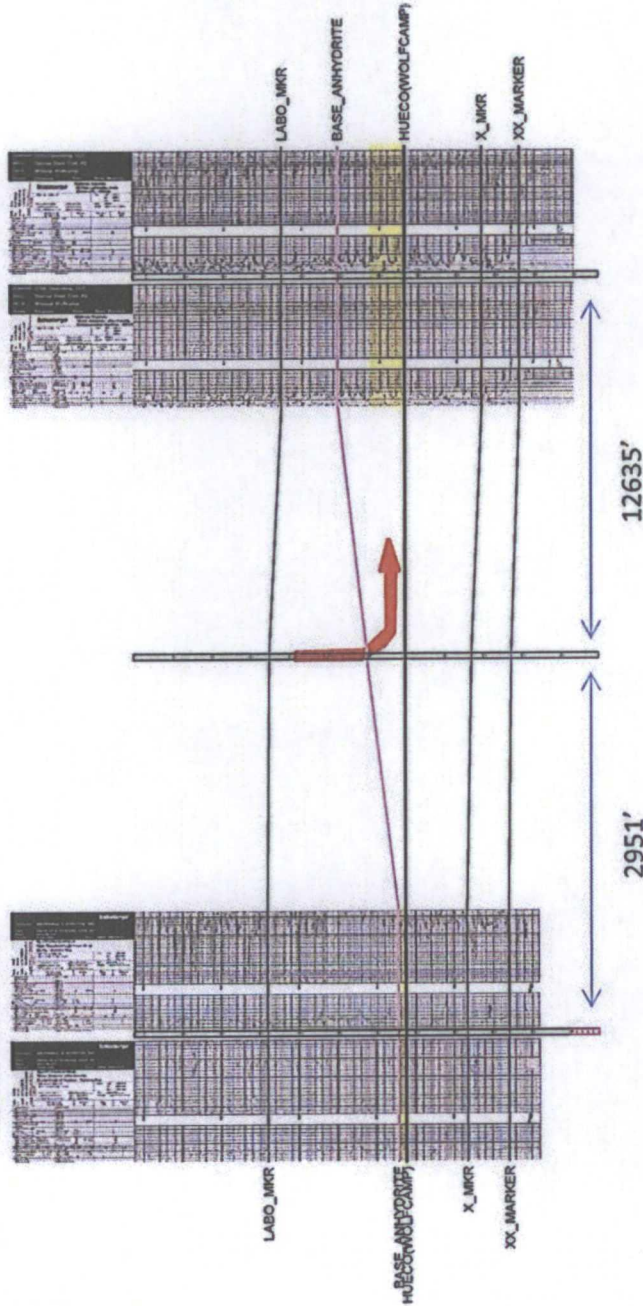
29152
CIMAREX ENERGY OF CO
INDEPENDENCE 8 FEDERAL COM
2

27995
COG OPERATING LLC
TAURUS STATE COM
2H

T15S R31E S8
1980 FSL 330 FWL
COMP DATE : 7/31/2009
CUM OIL : 92,754 BBLs
CUM GAS : 88,625 MCF

T15S R31E S8
1830 FNL 2310 FEL

T15S R31E S10
1980 FSL 330 FEL
COMP DATE : 1/14/2010
CUM OIL : 100,496 BBLs
CUM GAS : 97,532 MCF



Oil Conservation Division
Case No. 9
Exhibit No.

CIMAREX ENERGY CO.
INDEPENDENCE 8 FED # 2
LOWER ABGWOLF CAMP
STRUCTURAL X-SECTION
Chavez Co., NM
Well Number
Well Name
Well Number
True/False
Well - COMP DATE
Well - CUMUL BBLs
Well - CUMUL MCF
Consistent Distance Between Wells (NOT TO SCALE)
By: R. Worthington
February 13, 2012 11:57 AM