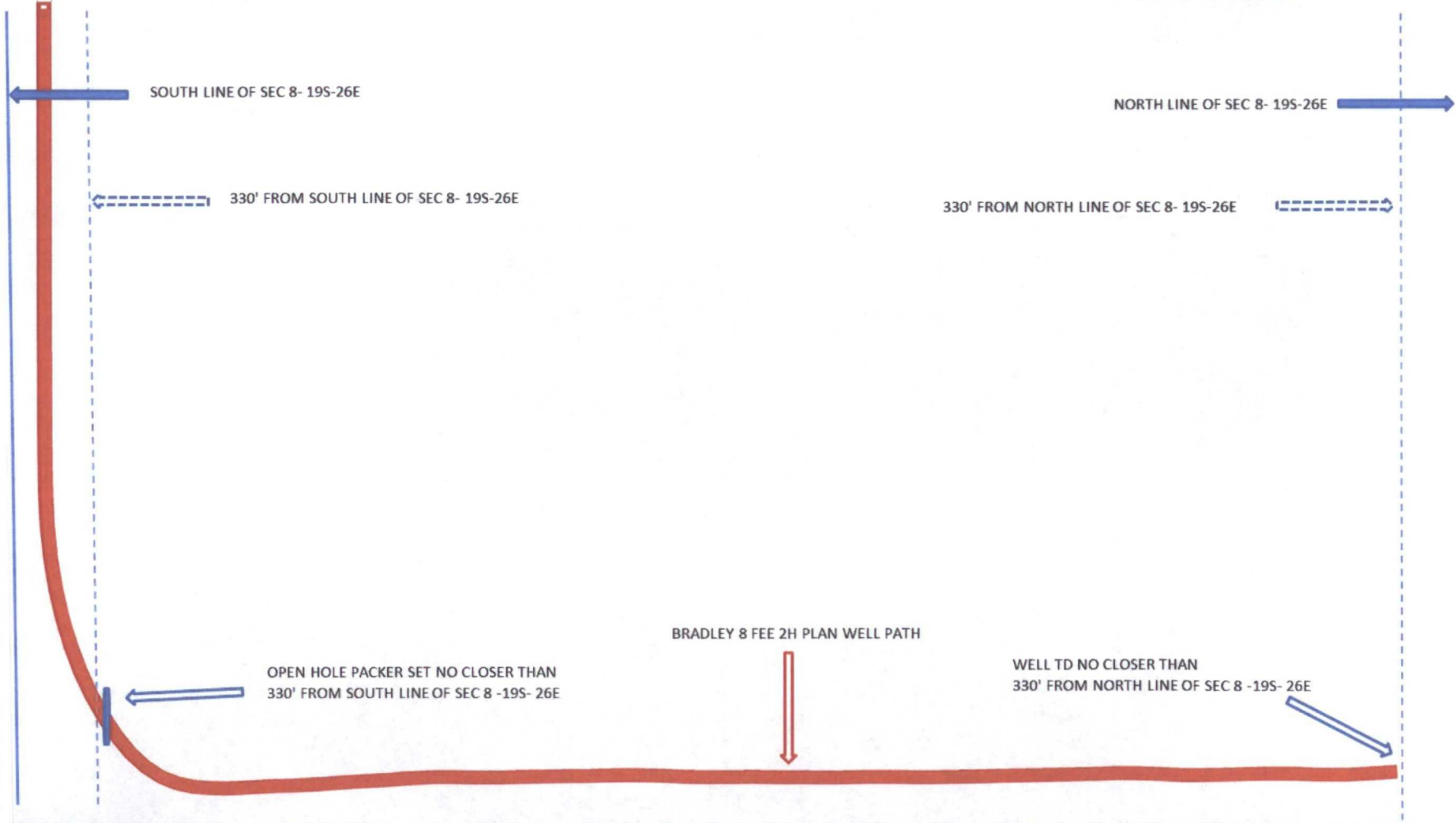


Lakewood Area – BRADLEY “8” Fee #2H Completion

BRADLEY 8 FEE #2H

SURFACE HOLE 150' FROM SOUTH LINE OF SEC 8 - 19S-26E

DIAGRAM NOT TO SCALE



BEFORE THE OIL CONSERVATION DIVISION

Santa Fe, New Mexico

Submitted by:
Exhibit No. 7

COG OPERATING LLC

Hearing Date: June 25, 2012