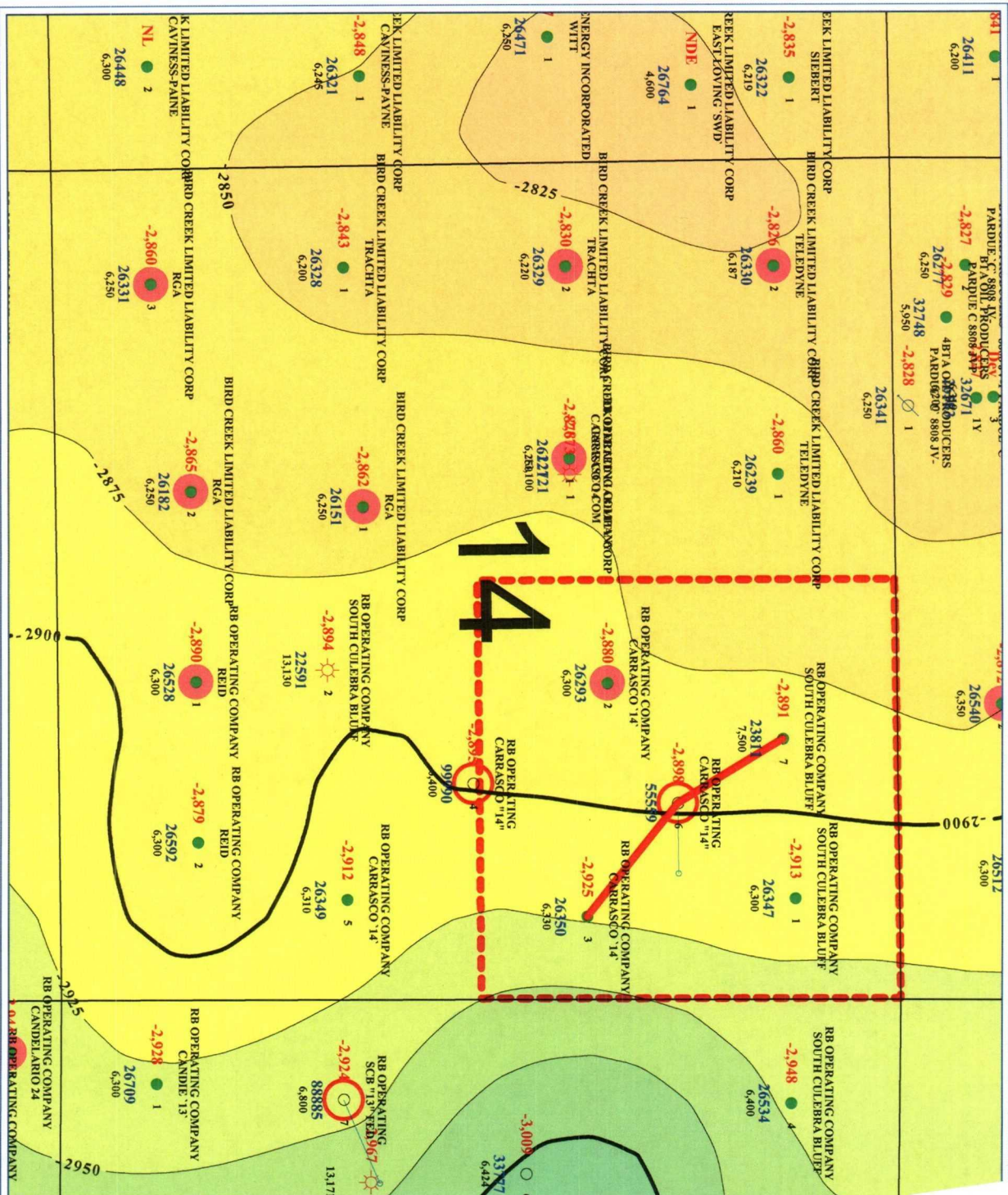


**BEFORE THE  
OIL CONSERVATION DIVISION**

Case No. 13471 Exhibit No. 6  
Submitted By:  
**RB Operating Company**  
Hearing Date: April 21, 2005



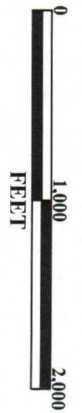
**RANGE RESOURCES**

EDDY COUNTY, NEW MEXICO

**Loving East Field**

**T/Lower Brushy Canyon "A" Zone**

CI = 25 ft



**POSTED WELL DATA**

**ATTRIBUTE MAP**

Zone: BRUSHY\_CANYON - IBC\_A\_PROD [MXE] IS PRESENT

- WELL SYMBOLS**
- Location Only
  - Oil Well
  - ⊙ Gas Well
  - ⊕ Injection Well
  - ⊖ Plugged & Abandoned Oil Well
  - ⊘ Abandoned Oil Well

By: MXE

March 18, 2005