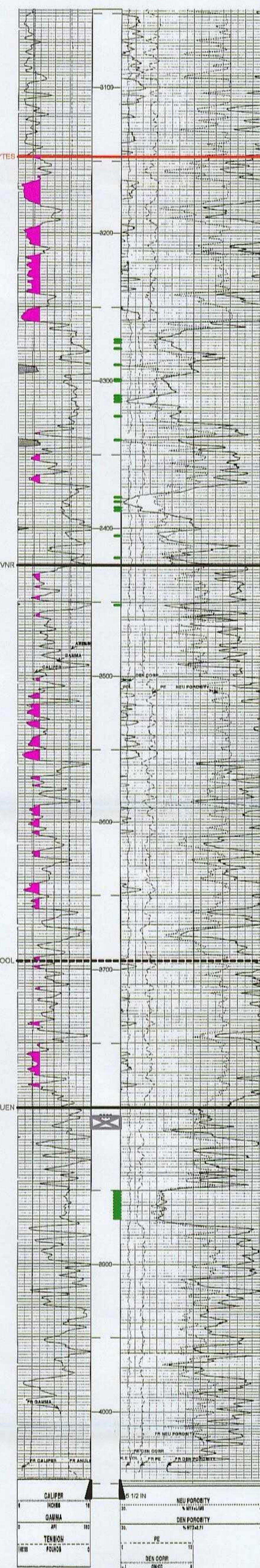


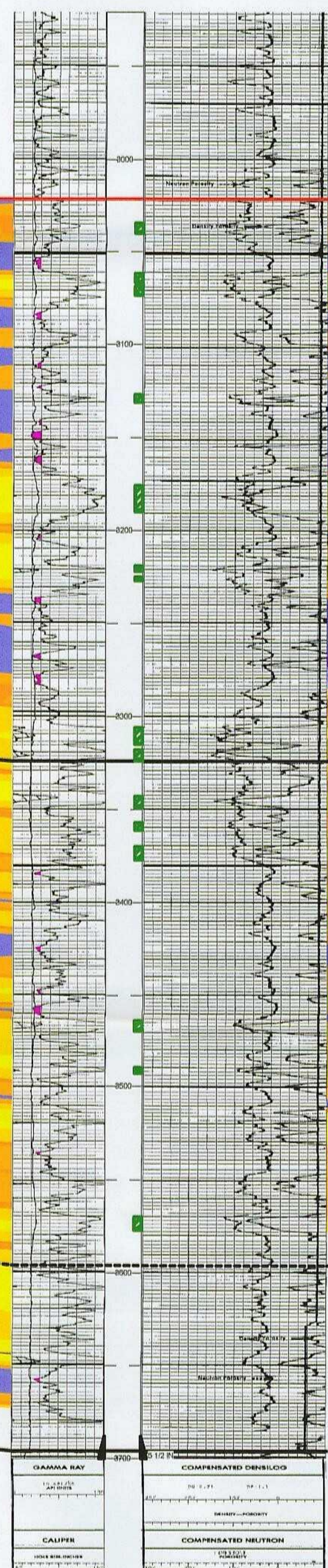
B

30025347910000
STATE A/C 2
75-A
MISSION RESOURCES INC
RAPTOR RESOURCES
T22S R36E S11
2040 FSL 660 FWL
ELEV_KB : 3,563
TD : 4,060



CUM_GAS_MMCF : 133
CURRENT_RATE_MCFPM : 1,643
EUR_MMCF : 348

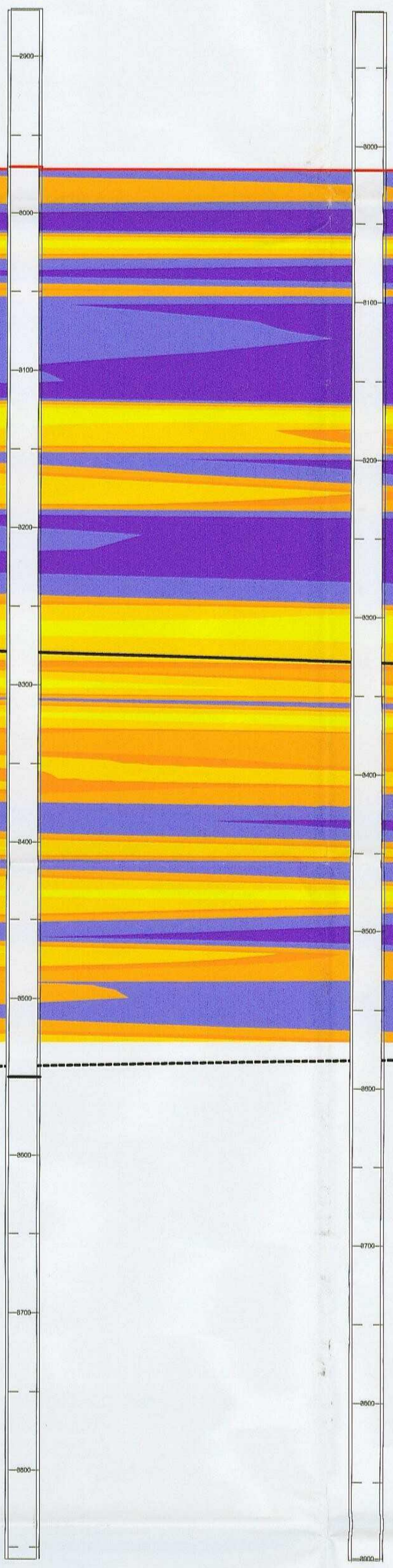
30025255420000
STATE
ACCT 2-62
MISSION RESOURCES INC
RAPTOR RESOURCES
T22S R36E S11
1960 FSL 2310 FWL
ELEV_KB : 3,550
ELEV_DF : 3,549
TD : 3,700



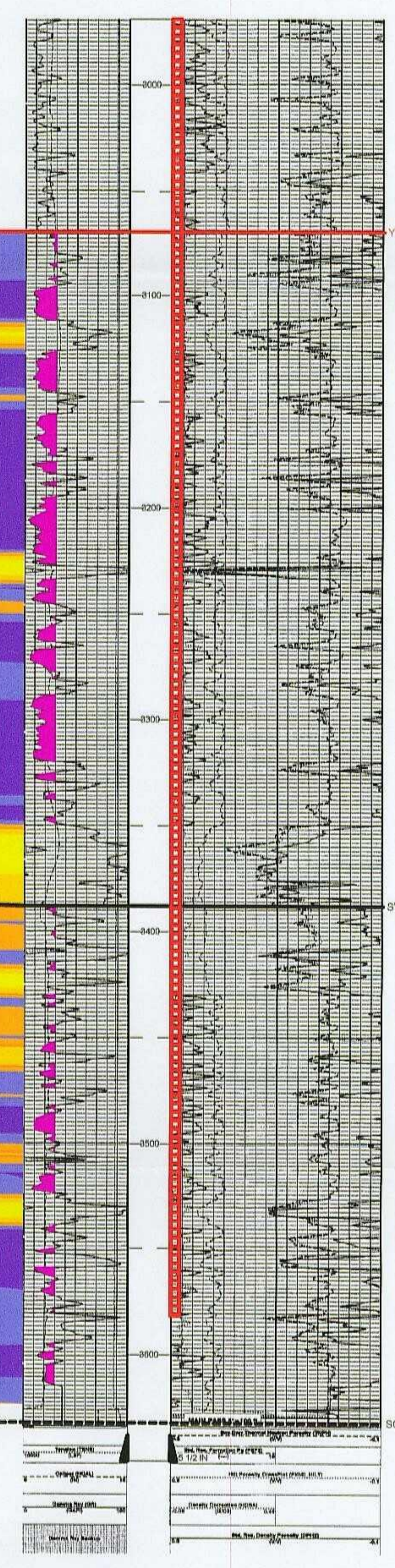
CUM_GAS_MMCF : 2,935
CURRENT_RATE_MCFPM : 1,253
EUR_MMCF : 3,128

PROPOSED STATE "A"
A/C-2 No. 82
MISSION RESOURCES
PTD: 4,000

PROPOSED STATE "A"
A/C-2 No. 84
MISSION RESOURCES
PTD: 4,000



30025354730000
MCDONALD STATE
40-WN
BP AMERICA PRODUCTION COMPANY
ARCO
T22S R36E S14
660 FNL 1960 FEL
ELEV_KB : 3,532
TD : 3,650



CUM_GAS_MMCF : 40
CURRENT_RATE_MCFPM : 426
EUR_MMCF : 50

B'

MISSION RESOURCES	
LEA JALMAT "NORTH AREA"	
STRATIGRAPHIC CROSS SECTION 1-47	
T22S/R36E SECTION 11	
LEA COUNTY, NEW MEXICO	
Horizontal Scale = 1/8" = 10'	Vertical Scale = 1/4" = 20'
DWI	
Well Name	Well Number
Operator	Hist. Operator
Perm. Rig- Sec	Footage Code
WELL - ELEV_KB	
WELL - ELEV_DF	
WELL - TD	
RPTING/LOGGING WELL	
REVISED	
RED PERFS = OCD FILES	
GREEN PERFS = OPERATOR FILES	
By: David Pherry	

BEFORE THE OIL CONSERVATION DIVISION
Case No. 11-12-11-14-001 No. 5
Submitted by:
MISSION RESOURCES CORPORATION
Hearing Date: April 23, 2011