

South

North

Schlumberger

Company: Coleman Oil & Gas Inc.

Well: Ricky Cor #2R
Field: Basin Fruitland Coal
County: San Juan State: New Mexico

Platform Express
Triple Litho-Density
Compensated Neutron

APL Depth (m)	Depth (ft)	Gamma	Gamma Ray	Gamma Log
0	0	125	125	125
1	3	125	125	125
2	6	125	125	125
3	9	125	125	125
4	12	125	125	125
5	15	125	125	125
6	18	125	125	125
7	21	125	125	125
8	24	125	125	125
9	27	125	125	125
10	30	125	125	125
11	33	125	125	125
12	36	125	125	125
13	39	125	125	125
14	42	125	125	125
15	45	125	125	125
16	48	125	125	125
17	51	125	125	125
18	54	125	125	125
19	57	125	125	125
20	60	125	125	125

Schlumberger

Company: Coleman Oil & Gas Inc.

Well: Ricky #1 R
Field: Basin Fruitland Coal
County: San Juan State: New Mexico

Platform Express
Triple Litho-Density Compensated Neutron
Gamma Ray/Caliper

APL Depth (m)	Depth (ft)	Gamma	Gamma Ray	Gamma Log
0	0	125	125	125
1	3	125	125	125
2	6	125	125	125
3	9	125	125	125
4	12	125	125	125
5	15	125	125	125
6	18	125	125	125
7	21	125	125	125
8	24	125	125	125
9	27	125	125	125
10	30	125	125	125
11	33	125	125	125
12	36	125	125	125
13	39	125	125	125
14	42	125	125	125
15	45	125	125	125
16	48	125	125	125
17	51	125	125	125
18	54	125	125	125
19	57	125	125	125
20	60	125	125	125

Dresser Atlas Induction Electrolog **R**

COMPANY: SIMMONS ENGINEERING CONSULT.
WELL: RICKY NO. 1
FIELD: GALLEGOS FRUITLAND
COUNTY: SAN JUAN STATE: NEW MEXICO
LOCATION: 790' PHL, 875' FWL
SEC: 18 TWP: 26N RANG: 11W

APL Depth (m) Depth (ft) Gamma Gamma Ray Gamma Log

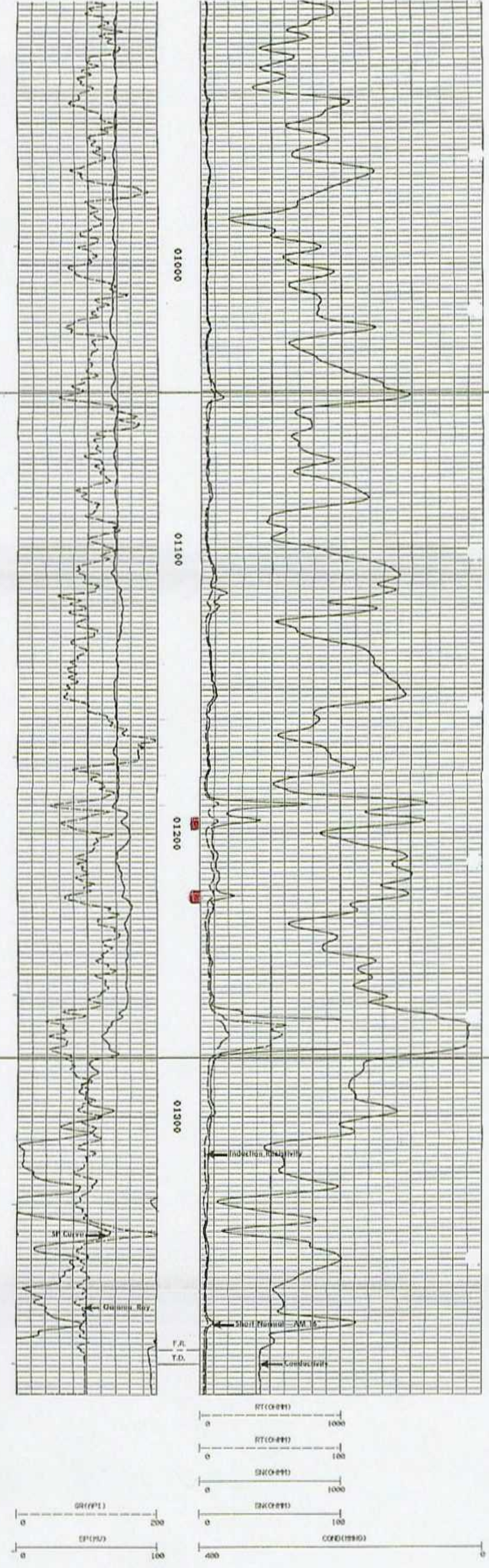
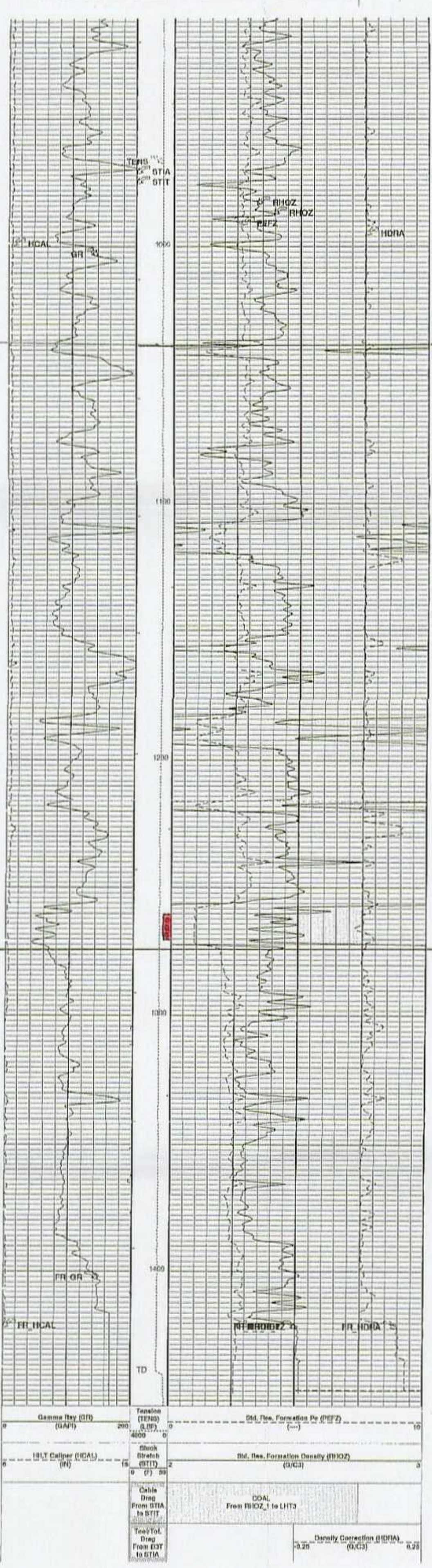
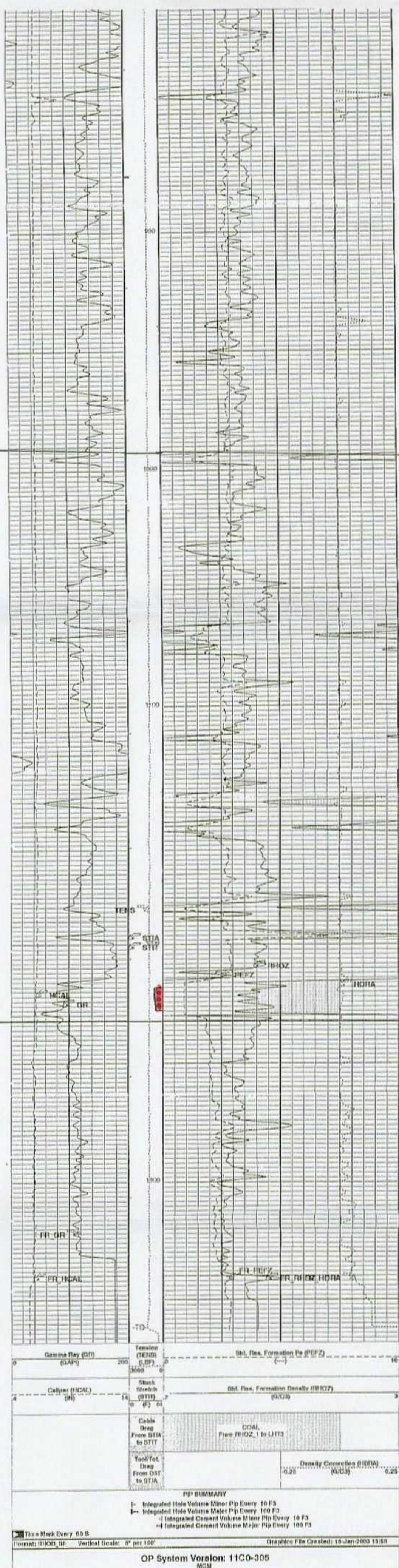
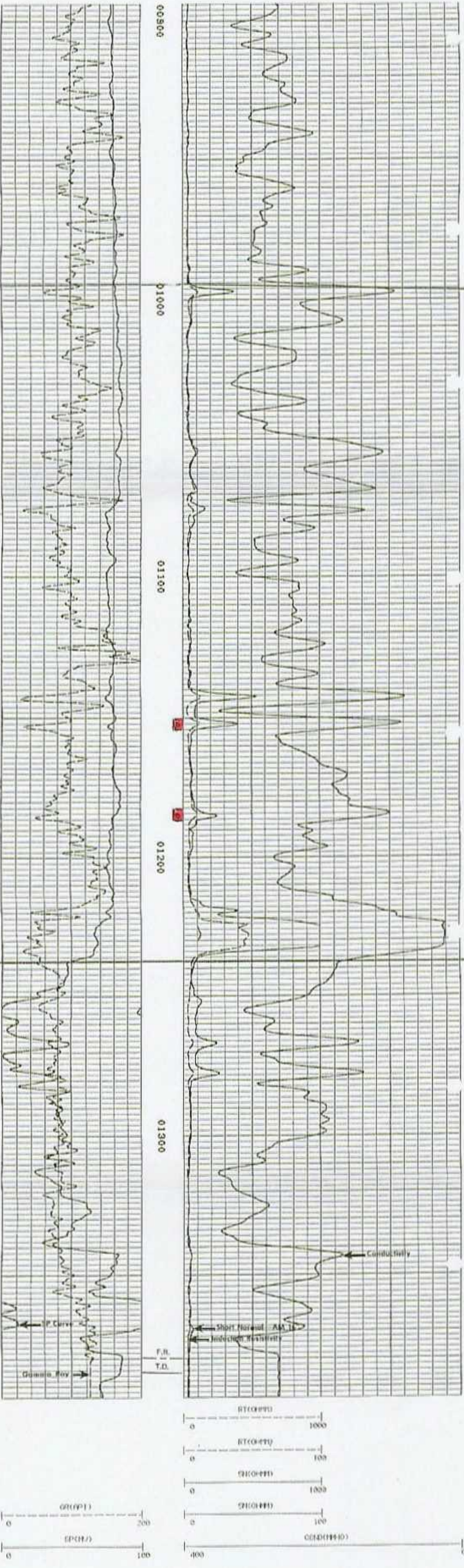
APL Depth (m)	Depth (ft)	Gamma	Gamma Ray	Gamma Log
0	0	125	125	125
1	3	125	125	125
2	6	125	125	125
3	9	125	125	125
4	12	125	125	125
5	15	125	125	125
6	18	125	125	125
7	21	125	125	125
8	24	125	125	125
9	27	125	125	125
10	30	125	125	125
11	33	125	125	125
12	36	125	125	125
13	39	125	125	125
14	42	125	125	125
15	45	125	125	125
16	48	125	125	125
17	51	125	125	125
18	54	125	125	125
19	57	125	125	125
20	60	125	125	125

Dresser Atlas Induction Electrolog **R**

COMPANY: SIMMONS ENGINEERING CONSULT.
WELL: RICKY NO. 1
FIELD: GALLEGOS FRUITLAND
COUNTY: SAN JUAN STATE: NEW MEXICO
LOCATION: 1850' PSL, 794' FWL
SEC: 18 TWP: 26N RANG: 11W

APL Depth (m) Depth (ft) Gamma Gamma Ray Gamma Log

APL Depth (m)	Depth (ft)	Gamma	Gamma Ray	Gamma Log
0	0	125	125	125
1	3	125	125	125
2	6	125	125	125
3	9	125	125	125
4	12	125	125	125
5	15	125	125	125
6	18	125	125	125
7	21	125	125	125
8	24	125	125	125
9	27	125	125	125
10	30	125	125	125
11	33	125	125	125
12	36	125	125	125
13	39	125	125	125
14	42	125	125	125
15	45	125	125	125
16	48	125	125	125
17	51	125	125	125
18	54	125	125	125
19	57	125	125	125
20	60	125	125	125



Kirtland Shale

Fruitland Formation

Pictured Cliffs Sandstone

COLEMAN OIL & GAS
P. O. DRAWING 3337 FARMINGTON, N.M. 87499

**Ricky Wells
Cross Section**
SAN JUAN CO., NEW MEXICO

BEFORE THE OIL CONSERVATION DIVISION
Santa Fe, New Mexico
Case No. 13279 Exhibit No. 3
Submitted by
COLEMAN OIL & GAS, INC.
Hearing Date: June 24, 2004