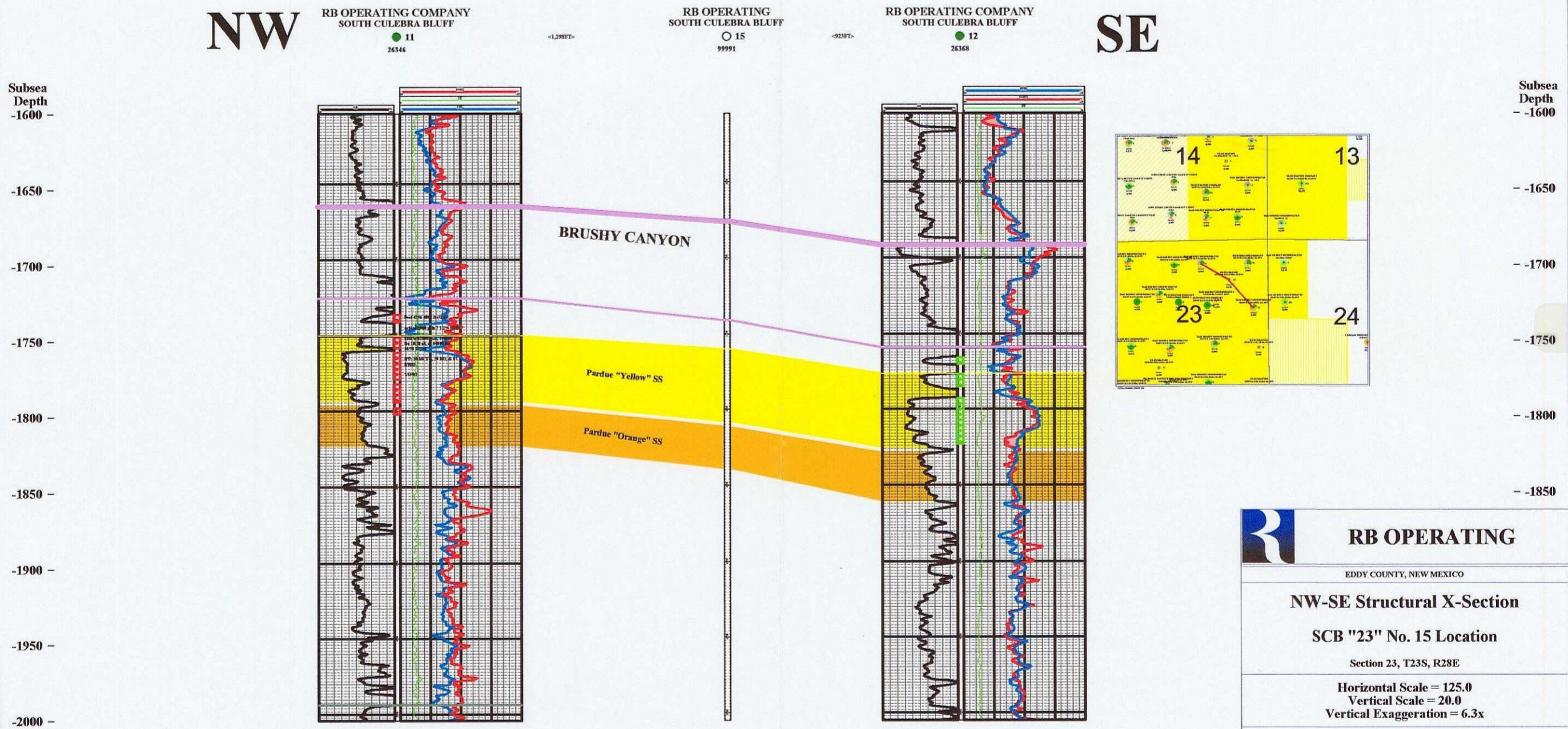
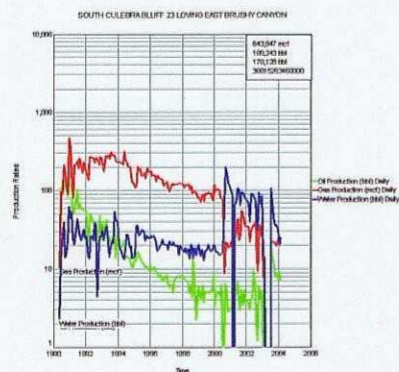


# NW-SE STRUCTURAL CROSS-SECTION

## South Culebra Bluff "23" No. 15



Re-Completed to Pardue  
 IPP: 30 MCFG, 29 BO, & 97 BW/D  
 (7/03)



BEFORE THE  
 OIL CONSERVATION DIVISION  
 Case No.13358 Exhibit No. 8  
 Submitted By:  
 RB Operating Company  
 Hearing Date: November 4, 2004

**RB OPERATING**

EDDY COUNTY, NEW MEXICO

**NW-SE Structural X-Section**

**SCB "23" No. 15 Location**

Section 23, T23S, R28E

Horizontal Scale = 125.0  
 Vertical Scale = 20.0  
 Vertical Exaggeration = 6.3x

**TOPS AND MARKERS**

- BC Pardue Zone
- B/ Pardue SH
- Pardue Zone Yellow SS
- BC Marker

**Operator**  
 Well Name  
 ● Well Number  
 API Series

**CORES** SDWL ACTIVE INACTIVE OPENHOLE BRIDGEPLUG PROPOSED SQUEEZED JUNK

**PERFS**

**SHOWSDST/WLTIP** GAS OIL WATER OTHER

**CASING** LINER

October 15, 2004 2:20 PM